



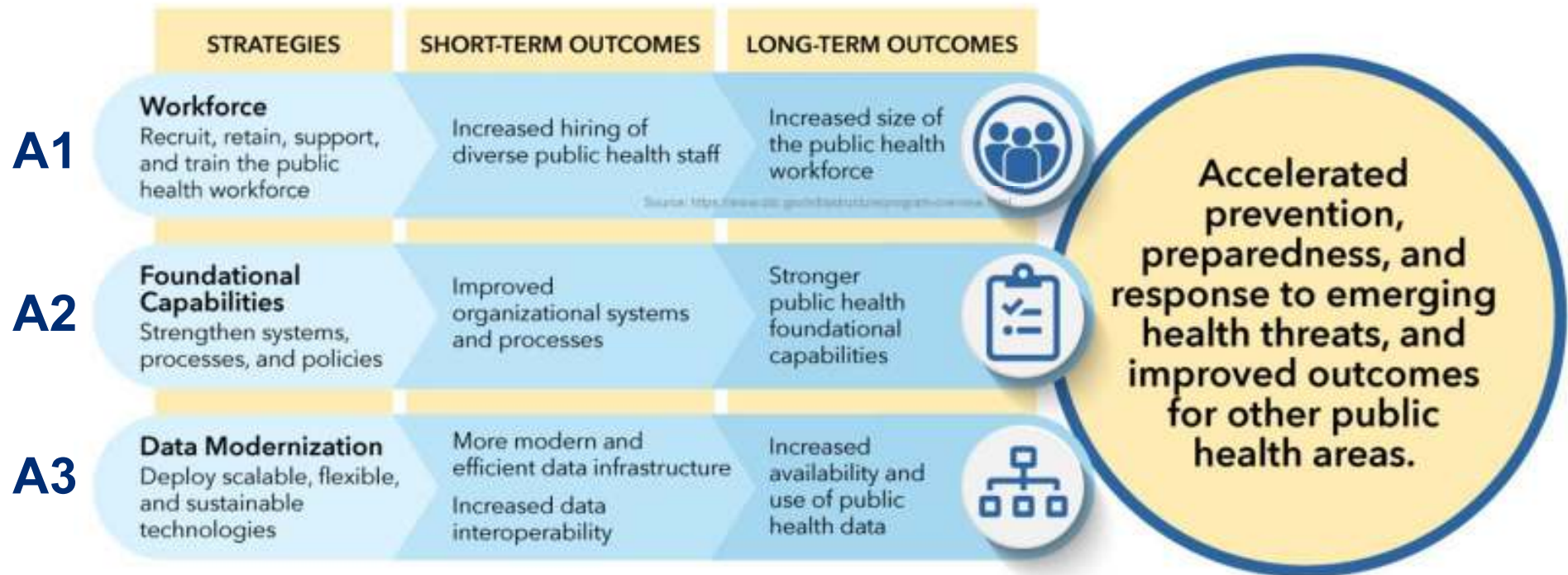
# **CDC Public Health Infrastructure Update**

**NYS Department of Health**

Keshana Owens-Cody

Director, Division of Public Health Infrastructure

# CDC Program Strategies and Outcomes



Source: <https://www.cdc.gov/infrastructure/program-overview.html>

# Public Health Foundational Capabilities

## Foundational Public Health Services



# LHD PHIG Investment

## Short-term outcomes:

- Improvements to the LHD workforce to include hiring new or filling vacant public health positions;
- Retaining current public health staff through various investments or services; and
- Improving foundational public health capabilities through training and other public health staffing enhancements

## Long-term outcomes:

- Improvements in the public health of the jurisdiction, especially among socially and economically marginalized communities

# LHD PHI Grant Expenditures

Expenditure	# of LHDs	Expenditure	# of LHDs
Office furniture improvements	31	Monetary incentives (e.g., retention payments, longevity payments, base pay increases, etc.)	15
Conference/training attendance	30	Personnel, existing positions	15
Personnel, new positions	25	AV upgrades (e.g., SmartBoards, microphone systems, etc.)	11
Computer upgrades & related supplies	24	Building improvements	8
Branded apparel	23	Job recruitment efforts	6
Software	17	Education incentives	6

# A1: Workforce Update

- Hired 100 Public Health Professionals (LHD and State)
- Summer Internship Program – (Soft launch in Regional Offices)
- Modernized recruitment efforts (job titles, job descriptions, postings)
- Increased awareness of public health careers (career fairs, education institutions, workforce development institutions, and community-based partners).
- Tuition Assistance Exploration (PHLOT Expansion)

## A2: Spotlight

# Public Health Continuing Education

Kendal Q. Pompey, Director, Public Health Continuing Education

# Public Health Continuing Education Unit (PHCE)

## Vision

Develop and implement education plans in collaboration with the NYS OPH Workforce that will continuously help employees apply their skills and knowledge and improve performance.

## Mission

Develop and support NYS OPH Workforce core competency learning needs to perform everyday work tasks while fostering a successful understanding of the 10 Essentials of Public Health Services to effectively serve the communities of NYS in way that will lead to positive health outcomes.

## Goal

Support employee learning to improve staff performance, happiness, satisfaction and well-being while ensuring that everyone receives the necessary knowledge, skills, and best practices, which will lead to a more cohesive workforce.





# PHCE Workgroups

- PHI Public Health Continuing Training & Education Workgroup
- Strength & Diversity of the OPH Workforce- Initiative 2

# Lessons Learned from *Year 2*

## OPH Workforce Team



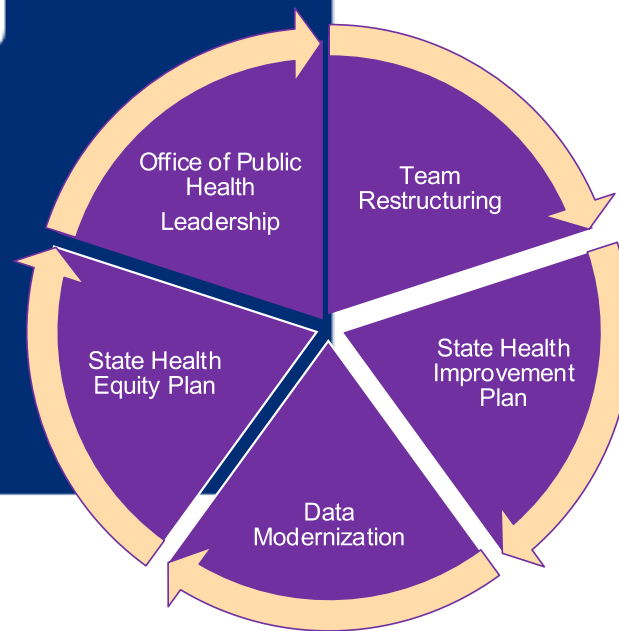
# Where are we headed in Year 3?

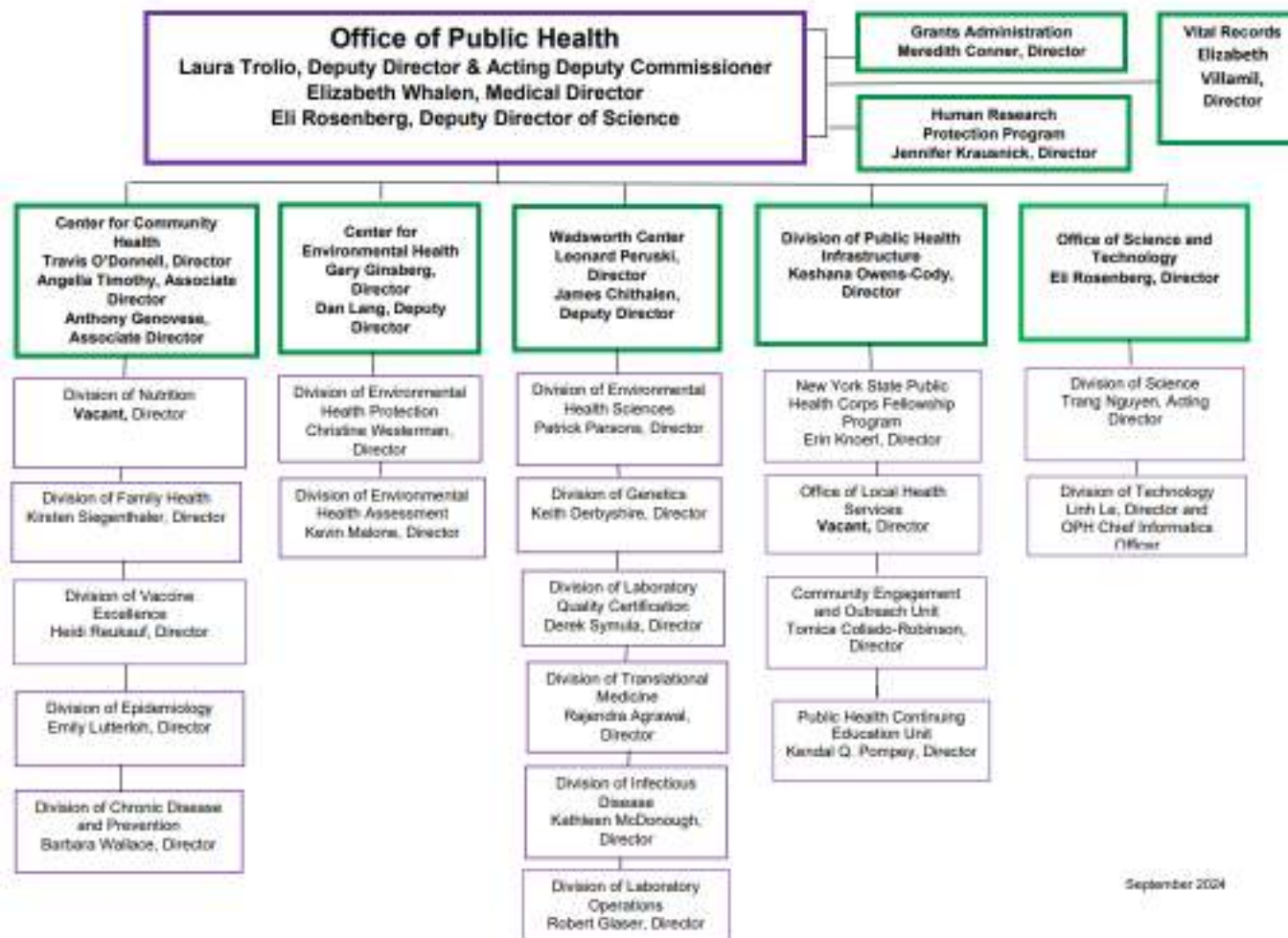
OFFICE OF PUBLIC HEALTH  
VISIBILITY

NYS INTERAGENCY  
ENGAGEMENT

# OPH Restructuring

Dr. Elizabeth Whalen  
OPH Medical Director





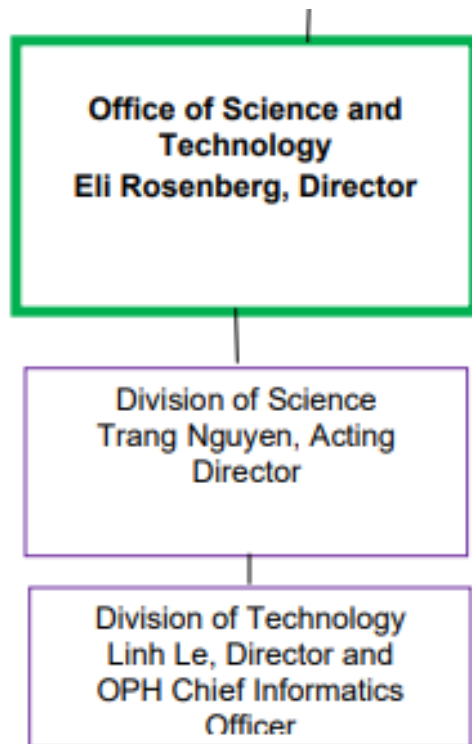
September 2024

# Division, Public Health Infrastructure



- Collaboratively identify the intersection between Division program outcomes and eliminate duplicative work.
- Promote public health training and development opportunities to OPH, Regional Offices and LHDs.
- Additional support staff placed in our Regional Offices.
- Increase visibility of the public health workforce, programs and services across the State.
- Increase pathways to public health careers.
- Increase engagement with community-based organizations, academic and workforce development institutions.
- Increase access to public health information from the Department of Health and the Office of Public Health to Local Health Departments and Community-Based Organizations.
- Dedicate resources to Community Health Improvement Planning.
- Leverage investments from the Public Health Infrastructure Grant.

# Division of Technology



- New Data Hub (<https://nysdohdatahub.health.ny.gov/nysdoh-dh>) on Health Commerce System (HCS) with aggregated data dashboards and enhanced data query products intended for LHDs.
- New Prescription Monitoring Program (PMP) Dashboard to provide LHDs with comprehensive, timely, and granular data on dispensed controlled substance prescriptions. The dashboard is designed to be a practical tool to support statewide and local prevention efforts by assisting in the identification of areas experiencing a high burden of controlled substance use and helping in the evaluation of the effectiveness of interventions designed to prevent and address substance use disorder.
- New Symptom Monitoring System to provide DOH and Local Health Departments (LHD) a tool to monitor symptoms for an individual or group during a disease outbreak starting with H5N1 and other public health emergencies.
- New Syndromic Surveillance Dashboard on HCS for LHDs with data from Emergency Departments
- New Communicable Diseases Dashboard on HCS for LHDs with data from NYS Communicable Disease Electronic Surveillance System (CDESS)