

**NYS EI-Hub**  
EARLY INTERVENTION SOLUTION

**NYS EI-Hub**  
NY EICC Meeting


*December 3, 2020/PCG*



**PUBLIC**  
CONSULTING GROUP

Solutions that Matter

1



**NYS EI-Hub**  
EARLY INTERVENTION SOLUTION

## Service Logging

presented by Paula Van Meter

- Overview
- Logging Process and Claim Creation
- 837 Uploads

2

## Service Logging Flow

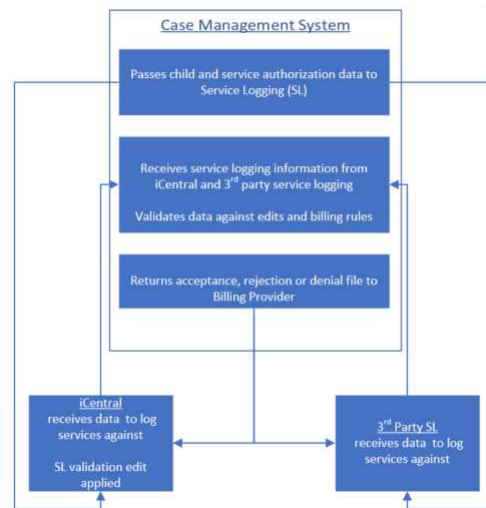
### Provider Service Logging

- EI-Hub/iCentral Component
- Provider 3<sup>rd</sup> party service logging system

### Integration with Case Management

- Both solutions will receive a file with child authorization information
- Both solutions must pass the same edits when transferred into the EI-Hub Case Management component
- Both solutions will receive response files iCentral
- Service logging entry edits align with Ei Hub Case Management edits

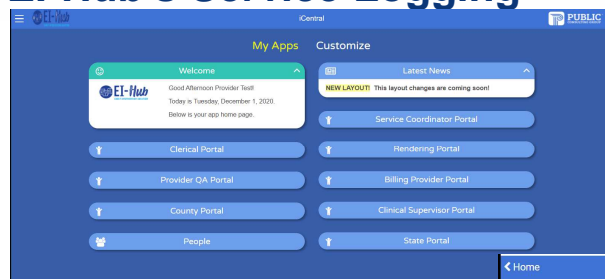
www.publicconsultinggroup.com



3

3

## EI-Hub's Service Logging



Portals offer access to users to log services

Action buttons allow a user to log an evaluation, visit or SC claim

The screenshot shows the 'My Active Authorizations' table. It includes a search bar, filters, and a table of active authorizations. The table has columns for Child, EI Child Reference ID, Service, Location, Session, and Start Date. Each row includes an 'Enter Visit by Auth' button and an 'Action' dropdown menu.

Child	EI Child Reference ID	Service	Location	Session	Start Date		
Amy Aubby	4455792	Occupational Therapy	Home	30 Minutes 2 Days per Week	1/2/2020	Enter Visit by Auth	Action
Amy Aubby	4455792	Service Coordination		5 Minutes 5 Hours per Week	1/2/2018	Enter Visit by Auth	Action
Vincent Acklin	8856725	Special Instruction		30 Minutes 25 Days per Week	2/27/2020	Enter Visit by Auth	Action
First Case	231231	Occupational Therapy	Home	30 Minutes 2 Days per Week	6/1/2020	Enter Visit by Auth	Action

www.publicconsultinggroup.com



4

4

## EI-Hub's Service Logging

Visits are logged in fields created for the NYS Early Intervention Program

www.publicconsultinggroup.com



5

5

## EI-Hub's Service Coordination Notes

Service coordination notes can be logged to support the visit and capture data appropriate to service coordination


Templates can be created to address specific visit purposes

www.publicconsultinggroup.com




6

6

**EI-Hub**  
EARLY INTERVENTION SOLUTION

# Go to Demo

[www.publicconsultinggroup.com](http://www.publicconsultinggroup.com)



7

7



8



NY Training Email  
[nyeitraining@pcgus.com](mailto:nyeitraining@pcgus.com)

Customer Service Center  
*Monday-Friday, 7am-7pm*  
1-866-315-3747