



Department
of Health

Differentiated Monitoring and Support (DMS 2.0): Excerpts from August 26, 2020 OSEP National Technical Assistance Call

Early Intervention Coordinating Council Meeting

December 3, 2020

1

OSEP NATIONAL TECHNICAL ASSISTANCE CALL

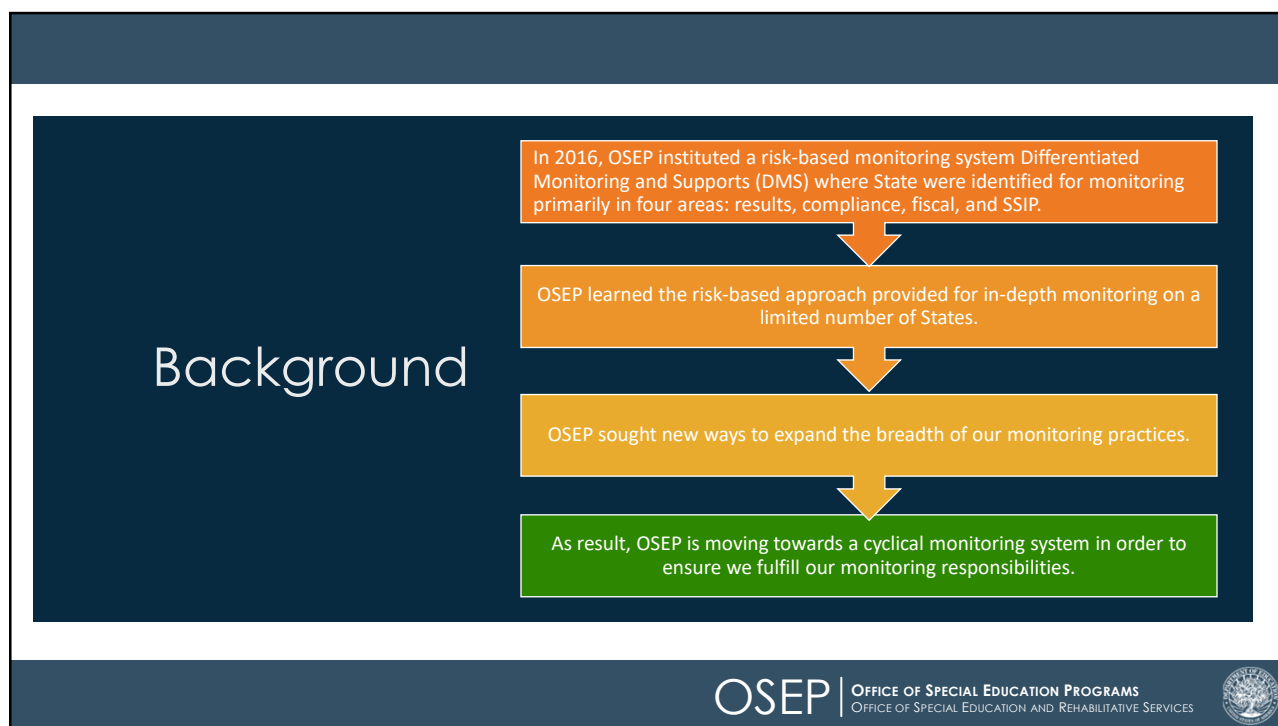
DIFFERENTIATED MONITORING AND SUPPORT (DMS) 2.0

AUGUST 26, 2020

OSEP | OFFICE OF SPECIAL EDUCATION PROGRAMS
OFFICE OF SPECIAL EDUCATION AND REHABILITATIVE SERVICES



2



3

Objectives of DMS Rethink

- ✓ Ensure OSEP is fulfilling its responsibilities to monitor grantees by monitoring States in a comprehensive manner.
- ✓ Align results and compliance in OSEP monitoring.
- ✓ Present transparent and comprehensible information to the public.
- ✓ Provide differentiated and meaningful support and technical assistance to States that is responsive to their needs.

OSEP | OFFICE OF SPECIAL EDUCATION PROGRAMS
 OFFICE OF SPECIAL EDUCATION AND REHABILITATIVE SERVICES

4

RESULTS



DMS 2.0 is:

- ☆ Focused on improved outcomes and results for infants, toddlers, children and youth with disabilities and their families in conjunction with compliance.
- ☆ Comprised of defined components.
- ☆ Integrated across components.
- ☆ Designed to address States' emerging needs and issues.



OSEP | OFFICE OF SPECIAL EDUCATION PROGRAMS
OFFICE OF SPECIAL EDUCATION AND REHABILITATIVE SERVICES



5

5-Year Cycle



- OSEP believes our monitoring cycle should be no more than 5 years.
 - This ensures all programs receives timely attention.
- In developing the 5-year cycle, OSEP is planning to visit States' Part B/C programs together and prioritizing States that we have not recently monitored.

OSEP | OFFICE OF SPECIAL EDUCATION PROGRAMS
OFFICE OF SPECIAL EDUCATION AND REHABILITATIVE SERVICES



6

Major Components of DMS 2.0



Every state receives a monitoring visit in each 5-year cycle.

Reserve resources off-cycle to monitor States based on emerging issues.

Year 1: Pre-site and Preparation
Year 2: Monitoring
Year 3: Post-visit Correction and Technical Assistance

Focus monitoring on systems of general supervision, aligning results and compliance.

Based on analysis of all available information

OSEP | OFFICE OF SPECIAL EDUCATION PROGRAMS
OFFICE OF SPECIAL EDUCATION AND REHABILITATIVE SERVICES

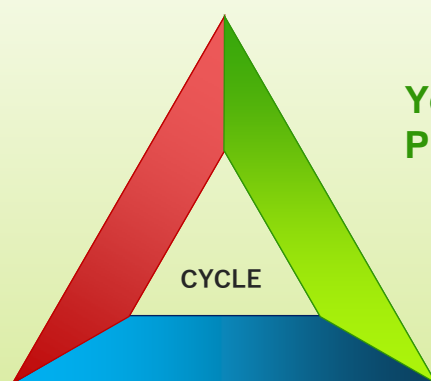


7

THREE PHASES OF MONITORING

Year 3: Post-monitoring Correction and Technical Assistance

Year 1: Pre-site and Preparation



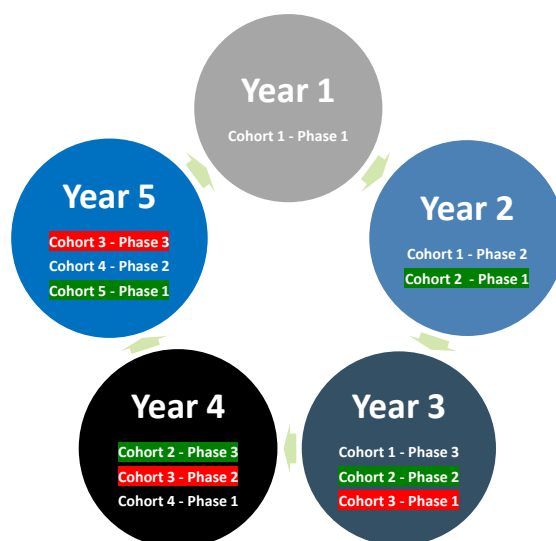
Year 2: Monitoring

OSEP | OFFICE OF SPECIAL EDUCATION PROGRAMS
OFFICE OF SPECIAL EDUCATION AND REHABILITATIVE SERVICES



8

Monitoring Cycle Five Years in Three Phases



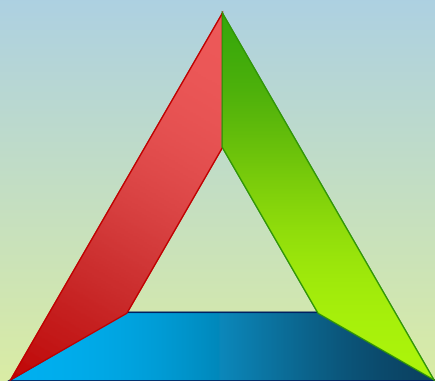
9

OSEP | OFFICE OF SPECIAL EDUCATION PROGRAMS
OFFICE OF SPECIAL EDUCATION AND REHABILITATIVE SERVICES



9

BENEFITS OF PHASED MONITORING



Phase 1: Provides opportunities for OSEP to conduct pre-site monitoring and to prepare for visits. Offers States benefit of technical assistance and opportunity to “self-correct”.

Phase 2: Based on what OSEP identifies in Phase 1, it provides an opportunity to delve deeper into a topic.

Phase 3: Provides time for OSEP to sufficiently follow-up to ensure correction and technical assistance in improving results.

OSEP | OFFICE OF SPECIAL EDUCATION PROGRAMS
OFFICE OF SPECIAL EDUCATION AND REHABILITATIVE SERVICES



10

Putting the Pieces Together



11

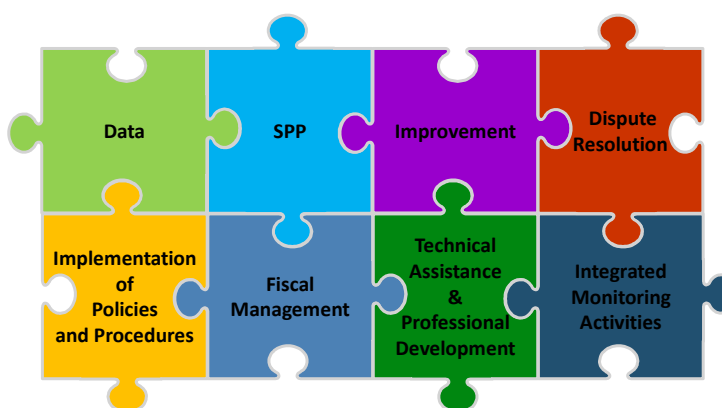
OSEP | OFFICE OF SPECIAL EDUCATION PROGRAMS
OFFICE OF SPECIAL EDUCATION AND REHABILITATIVE SERVICES



11

Improving Educational Results and Functional Outcomes for All Children with Disabilities

8
Key
Components



12

OSEP | OFFICE OF SPECIAL EDUCATION PROGRAMS
OFFICE OF SPECIAL EDUCATION AND REHABILITATIVE SERVICES



12

PHASE 1 ACTIVITY SCHEDULE



OSEP | OFFICE OF SPECIAL EDUCATION PROGRAMS
OFFICE OF SPECIAL EDUCATION AND REHABILITATIVE SERVICES



13

Questions?



14

OSEP | OFFICE OF SPECIAL EDUCATION PROGRAMS
OFFICE OF SPECIAL EDUCATION AND REHABILITATIVE SERVICES



14