

State Systemic Improvement Plan (SSIP) Improving Family-Centeredness Together (IFaCT)

Jessica Simmons - Training, Technical Assistance, and SSIP



September 24, 2020

1

September 24, 2020

2

State Systemic Improvement Plan

- Improve results for infants and toddlers with disabilities and their families
- Three phases: 2014 to 2020
 - First phase: data analysis and select measure (completed April 1, 2015)
 - Second phase: plan to align infrastructure and evaluate (completed April 1, 2016)
 - Third phase: implementation (report on progress each year)
 - Cohort 1 (February 2018 – Fall 2018)
 - Cohort 2 (Fall 2018 – Fall 2019)
 - Current report was submitted to the Office of Special Education Programs (OSEP) on April 1, 2020
 - Training (September 2019 – September 2020)

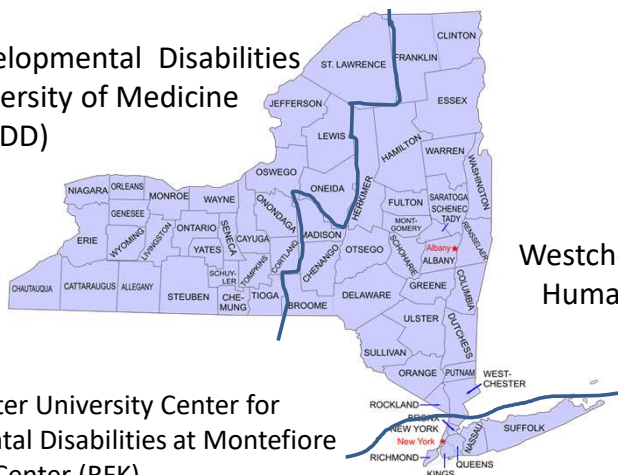
2

September 24, 2020

3

Regions by University Centers of Excellence in Developmental Disabilities (UCEDDs)

Strong Center for Developmental Disabilities
at Rochester University of Medicine
(SCDD)



Westchester Institute for
Human Development
(WIHD)

Rose F. Kennedy Center University Center for
Excellence in Developmental Disabilities at Montefiore
Medical Center (RFK)

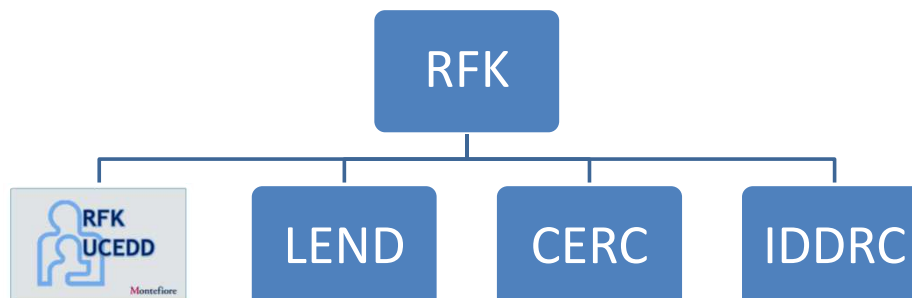


3

September 24, 2020

4

Rose F. Kennedy University Center for Excellence in Developmental Disabilities (RFK UCEDD)



4

RFK Regions/Counties Served

Cohort 1	Cohort 2		
English	English	Spanish	Mandarin
8 Teams	5 Teams	2 Teams	1 Team
Manhattan Queens Brooklyn Staten Island Bronx	Nassau Suffolk	Manhattan Queens Brooklyn Staten Island Bronx	Manhattan Queens



5

5

RFK Cohort 1 Projects

Region	Project description
NYC – Teams 1, 4, 8	Hosted family-centered events in the community (parent workshop, bounce house, and arts & crafts)
NYC – Team 2	Developed 1-page resource guide specific for Staten Island including parent support groups, supports for children, and community services
NYC – Team 3	Developed survey for EI families to determine what information is useful in determining fit of group developmental programs for their child with intention of improving the directory of group developmental services available on the NYS DOH BEI website
NYC – Team 5	Developed survey to assess where children and families were with functionality regarding interacting with typical peers with aim to create a NYS BEI program where therapist would facilitate play between the child receiving EI (social skill delay and/or on autism spectrum) and a typical peer during regularly-scheduled home-based SI and/or ST services
NYC – Team 6	Developed a “ Pending Services ” flyer in English and Spanish including information about families’ rights and service coordinators’ responsibilities regarding services left pending after the IFSP and a “ Pending Services ” spreadsheet to self-monitor pending services and create accountability for service coordinators at agencies
NYC – Team 7	Piloted distribution of NYC DOH Early Intervention Resource Guide to families involved NYC EIP’s Developmental Monitoring Unit



6

6

RFK Cohort 2 Projects (English-speaking Teams)

County	Project description
Nassau	Developed "Parent Resource and Support List" including name, address, phone number, website, and brief description of agencies that provide emotional supports to families, concrete resources, and information. Available on the Nassau county website.
Nassau	Developed and distributed flyer and information re: Parent to Parent of New York State at initial IFSP meetings and follow up meetings with OSCs and EIOs
Suffolk	Host monthly "Parent Connections Playgroups" at the Suffolk County Division of Services for Children with Special Needs. Specialist or Suffolk EIO facilitate discussion about different EI topics (e.g., family centered services, transition, parent self care).
Suffolk	Developed and distributed resource card during initial EI referral, which includes phone number, social media, and websites for Family and Community Engagement Centers, Help Me Grow, and Parent to Parent NYS
Suffolk	Developed comprehensive resource guide specific to Suffolk county including community resources and resources for childcare services, immigrant communities, parent networking, families with children with special needs, and mental health services. Piloted distribution of list at IFSP meeting.

Suffolk County Division of Services for Children with Special Needs
Early Intervention
Improving Family Connectedness Together
Parent Connections Playgroup

If you:

- Have a child receiving Early Intervention Services;
- Would like to meet other parents who have children receiving Early Intervention services;
- Would like a safe play place where you and your child can meet and interact with other families;


Then you should come to the

Suffolk County Early Intervention Parent Connections Playgroup

When: The second Friday of every month from 10-11 a.m.
(12/11, 2/6, 3/6, 4/12, 5/10, 6/14, 7/12, 8/6, 9/13, 10/11, 11/8, 12/13)

Where: D5C5N, 50 Laser Court, Hauppauge



How: To sign up call (631)853-2334, or
Email: Sheila.ventrice@suffolkcountyny.gov



Early Childhood Family and Community Engagement (FACE) Center
(516) 413-8229
<http://iearlychildhoodliu.org/>

Help Me Grow - Long Island
(631) 662-3176
<http://docsfortots.org/help-me-grow-long-island/>

Parent to Parent of NY State
1-800-559-1729 or (631) 434-6196
<http://parenttoparentnys.org/offices/long-island/>

Se habla Español  

Suffolk – Resource Card

7

7

RFK Cohort 2 Projects (Spanish-speaking Teams)

Region	Project Description
NYC	Planned and hosted INCLUDEnyc workshop "Explorando Los Primeros Años: Criando un niño pequeño con necesidades especiales" (Exploring the First Years: Raising a young child with special needs) in Manhattan on September 2019. Workshop was held in Spanish.
NYC	Hosted a weekly parent-training workshop at the McCarton Center in the Bronx where McCarton staff or invited speakers facilitated discussion about different topics related to raising a young child with a disability (e.g., communication strategies, sensory & play). Discussions were facilitated in English and Spanish. Workshop moved to Jackson Children Services in Queens in September 2019.

un taller gratuito de **INCLUDEnyc** | 
EXPLORANDO LOS PRIMEROS AÑOS:
CRIANDO UN NIÑO PEQUEÑO CON NECESIDADES ESPECIALES



Aprenda sobre los hitos de desarrollo infantil y qué hacer si sospecha que su hijo tiene un retraso. Compartiremos estrategias de crianza para padres y aprenderemos a cómo obtener servicios y apoyo para su hijo.

VIERNES, 13 DE SEPTIEMBRE, 2019
10:00 A.M. - 12:00 P.M.

LUGAR:
INCLUDEnyc
10 East 59th Street, 5th Floor
New York, NY 10003

IDIOMA:
Español

MÁS INFORMACIÓN:
Llámanos al (212) 617-1650 ext. 39

PRESENTADO POR:
Jeffrey Bell, INCLUDEnyc
Adriana Ramirez, INCLUDEnyc

NECESITA REGISTRARSE!
<http://go.includenyc.org/registrarseparentes>

WEEKLY PARENT TRAINING WORKSHOPS
A FREE workshop series for parents and caregivers!



Workshop Topics:

Topic	Facilitator	When	Where
Parent self-care	Christina J.	February 7	February 7, 10am
Communication Strategies	Christina J.	February 14	February 14, 10am
Child's Sensory & Play	Christina J.	February 21	February 21, 10am
Parent self-care	Christina J.	February 28	February 28, 10am

Workshop Registration:
RSVP@mccarton.org or (718) 687-6211
Location: McCarton Center Bronx
1809 Longfellow Avenue, Bronx, NY 10460



 **EINSTEIN**
Albert Einstein College of Medicine

Montefiore

8

8

RFK Cohort 2 Projects (Mandarin-speaking Team)

Region	Project description
NYC	<p>Host a monthly 2-hour parent workshop at the Chinese-America Planning Council, Inc. in Queens where an EI professional presents on a different topic related raising a young child with special needs. Workshops are adapted to Chinese families (i.e., Mandarin interpretation and handouts are provided), but all families are welcome. Since March 2020, due to COVID-19, workshops moved to Zoom. Past topics include:</p> <ul style="list-style-type: none"> “Developmental Monitoring” – Romina Barros, MD (RFK) “Early Intervention 101” – Leslie Liu, EIO (Brooklyn Regional Office) “Transitioning out of Early Intervention” – Andrew Weisfeld, JD “Occupational Therapy in Early Intervention” – Beth Elenko, PhD (SUNY Downstate) “Toilet Training & Challenges” – Blanche Benenson, MD (RFK) “ABA” – April Kisamore, PhD (Hunter College) “Oral Health” – Marcelle Pachter, DDS (RFK) “Feeding Challenges” – Ida Baressi, SLP (RFK) “Sensory Challenges” – Liz Ridgeway, OT (RFK)



9

9

Project Implementation

Successes	Challenges
<ol style="list-style-type: none"> Teams developed and executed wide range of projects: <ol style="list-style-type: none"> Project type Component of NYS EIP addressed Target population Families who were impacted by IFaCT quality improvement projects reported feeling better connected to and supported by other families. Many parent IFaCT participants were active members on their teams. They were able to: <ol style="list-style-type: none"> Influence the aim and scope IFaCT projects Share their experiences with other parents and EI professionals Build advocacy and leadership skills Influence future efforts to improve family engagement in EI Successful collaboration between professionals from various government and non-government institutions 	<ol style="list-style-type: none"> Coordinating efforts among team members from different agencies and boroughs/counties <ol style="list-style-type: none"> Sustaining communication Different priorities due to their geographic location and specific work Unclear expectations & time commitment Measuring impact of projects on EI families using data was complicated due to: <ol style="list-style-type: none"> Technological limitations Time-consuming nature of contacting families one-by-one Reliance on non-IFaCT participating agencies and professionals Families may not use resources soon after receiving Difficulties engaging EI families in their projects <ol style="list-style-type: none"> Connecting families with support systems and finding resources may not be families' primary priority. They may be more focused on navigating EI, building relationships with practitioners and dealing with emotions.

9/23/2020 | 10

10

Sustainability

- Cohort 1 teams have disbanded
- Cohort 2
 - Nassau EI continues to monitor “Parent Resource and Support List” and distribute Parent to Parent information, but due to COVID-19 many of the resources are not appropriate and agencies must prioritize other issues
 - Suffolk EI has suspended distribution of resource card and Parent Connection Playgroup until further notice due to COVID-19
 - Mandarin-speaking team has disbanded, but CPC and RFK have solidified partnership and RFK will continue to support CPC in hosting Parent Workshops for families with children 0-5 years old with delays and disabilities
 - Spanish-speaking teams have disbanded



9/23/2020 | 11

11

September 24, 2020

12

SSIP Training Series (RFK)

RFK				
Module	Presenter	Language	Audience	Format
Families' Perspectives: A Parent's Journey to Early Intervention	Parent	English	Families	Video
Families' Perspectives: A Parent's Journey to Early Intervention	Parent	Spanish (with English sub-titles)	Families	Video
Families' Perspectives: A Parent's Journey to Early Intervention	Parent	Bengali (with English sub-titles)	Families	Video
Families' Perspectives: A Parent's Journey to Early Intervention	Parent	Chinese (with English sub-titles)	Families	Video
Developing IFSPs that Fit You and Your Priorities	Bonnie Keilty, EdD, Hunter College	English	Families	Video
Developing Meaningful Individualized Family Service Plans through Family Engagement	Bonnie Keilty, EdD, Hunter College	English	Early Intervention Professionals	Video
Overview of Families' Rights during Referral, Evaluation and Eligibility	Laura O'Brien, JD & Kimberley Weisbeck, JD, Disability Rights New York	English	Families	Video
Overview of Families' Rights regarding Individualized Family Service Plan	Laura O'Brien, JD & Kimberley Weisbeck, JD, Disability Rights New York	English	Families	Video
Overview of Families' Rights during Early Intervention Sessions	Laura O'Brien, JD & Kimberley Weisbeck, JD, Disability Rights New York	English	Families	Video
Overview of Families' Rights during Transition from Early Intervention	Laura O'Brien, JD & Kimberley Weisbeck, JD, Disability Rights New York	English	Families	Video
How to have Meaningful Conversations with Families About Their Rights	Janyll Canals-Kernizan, JD, Advocates for Children of New York	English	Early Intervention Professionals	Video



12

September 24, 2020

13



13

September 24, 2020

14



About Us

- Article 28 Diagnostic and Treatment Center
- Programs include:
 - Adult Health
 - Assistive Technology
 - Behavioral Psychology
 - Child Abuse Pediatrics
 - Children's Advocacy Center
 - Child Welfare
 - Dental
 - Early Intervention
 - Speech and Hearing
- As a UCEDD, we provide community services, education, training and technical assistance as well as conduct social/behavioral, education, and clinical research



14

14

September 24, 2020

15



Westchester Institute
for Human Development

Project Team



Tricia Patrick, DrPH
Project Director
330 Cedarwood Hall
ppatrick@wihd.org
914-493-8203



Jenna Lequia, PhD
Project Manager
331 Cedarwood Hall
jlequia@wihd.org
914-493-8109



Katie Myhren, MS, MBA
Project Staff
328 Cedarwood Hall
kmyhren@wihd.org
914-493-1235



Anne Marie Cellante, MEd
Project Staff
333 Cedarwood Hall
acellante@wihd.org
914-849-0520



15

September 24, 2020

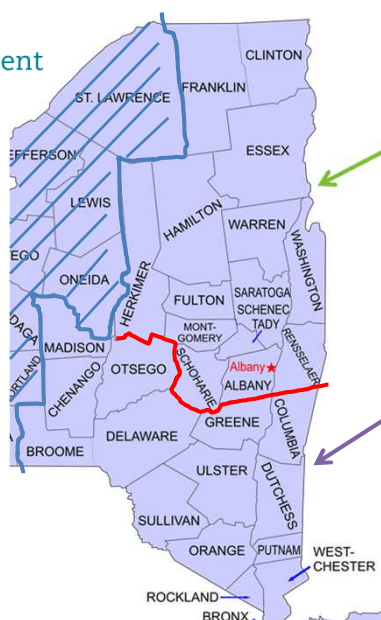
16



Westchester Institute
for Human Development

WIHD Region

- 28 counties served
- 14 in each cohort



COHORT TWO

October 2018 to September 2019

- Albany
- Clinton
- Essex
- Franklin
- Fulton
- Hamilton
- Herkimer
- Montgomery
- Rensselaer
- Saratoga
- Schoharie
- Schenectady
- Warren
- Washington

COHORT ONE

January 2018 to December 2018

- Broome
- Chenango
- Columbia
- Delaware
- Dutchess
- Madison
- Orange
- Otsego
- Putnam
- Rockland
- Greene
- Sullivan
- Ulster
- Westchester



16

September 24, 2020

17



Westchester Institute
for Human Development

Cohort Data

	Cohort 1	Cohort 2	Total
Number of County Teams	14	13	27
Total Number of Team Members	75	65	140
Early Intervention Official/Manager/Designee	24	21	45
Service Provider/Service Coordinator	34	29	63
Parent	17	15	32
Project Types	4	3	7
PDSA Tasks Completed	254	359	613
Record Reviews Meeting Criteria	81.7%	75.1%	78.4%

17



17

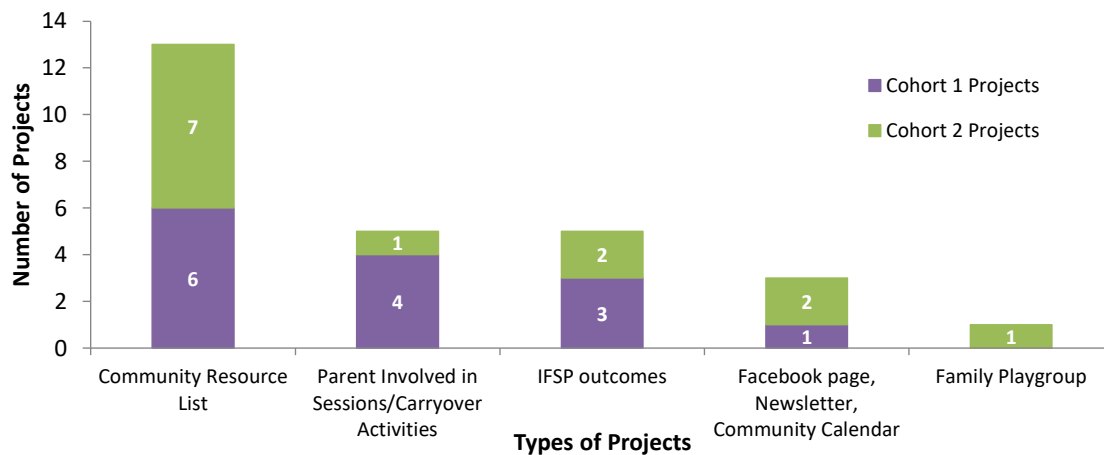
September 24, 2020

18



Westchester Institute
for Human Development

Cohort Data



18



18

September 24, 2020

19



County	Products Developed
Broome	Facebook page
Chenango	Parent survey regarding interest in support group
Columbia	N/A (Their plan did not discuss developing a product; they added outcome to initial IFSP)
Delaware	Newsletter for families
Dutchess	Library resource list, community resource directory, revised family assessment tool
Greene	Community resource list, community parent survey
Madison	Revised family resource form, EI surveys (Evaluation services, initial visit, ongoing services, transition, discharge)
Orange	Resource list, parent resources survey
Otsego	Community resource list, letter to families, parent resource survey, notice of record retention, transition survey, ineligible survey
Putnam	Revised family assessment tool, OSC progress note, community resource template
Rockland	Resource list
Sullivan	Community resource notification form
Ulster	Strategy worksheet
Westchester	Parent survey

Cohort 1 Projects

19



19

September 24, 2020

20



Broome County



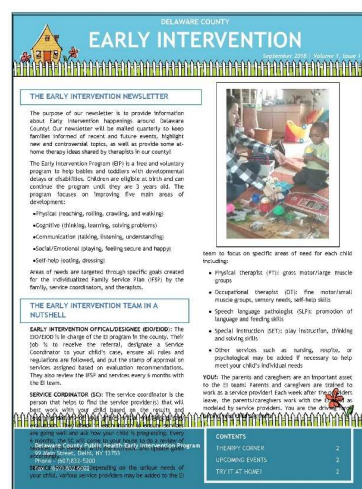
Helpful Websites
 American Academy of Pediatrics
www.aap.org
 Broome County Parent Resource Guide
www.broomecountyny.gov
 Dutchess County
www.dutchessny.gov
 Ulster County
www.ulstercountyny.gov
 Westchester County
www.westchesterny.gov
 Dutchess County
www.dutchessny.gov
 Ulster County
www.ulstercountyny.gov
 Westchester County
www.westchesterny.gov
 Dutchess County
www.dutchessny.gov
 Ulster County
www.ulstercountyny.gov
 Westchester County
www.westchesterny.gov

Dutchess County
 Early Intervention Program
 Community Resource Directory



Dutchess County
 Early Intervention Program
 86 Dutch County Plaza, Suite 100
 Poughkeepsie, NY 12601
 Phone: 845-485-3015
 Fax: 845-485-3014
www.dutchessny.gov

Dutchess County



Delaware County

Cohort 1 Projects

20



20

September 24, 2020

21



County	Products Developed
Albany	None
Clinton	Community resource guide, survey for families
Essex	Monthly community calendar, survey for families, Facebook DOH flyer
Franklin	"Ta You Child's Care" worksheet, Facebook flyer, Resource list
Fulton/Hamilton	Goal sheet
Herkimer	Survey for families, Autism spectrum resource brochure, letter for families
Montgomery	Script of questions for Service Coordinators, family resource list
Rensselaer	Updated parent questionnaire, tips for caregivers, letters to providers, "Help from Home" worksheet
Saratoga	None
Schenectady	Community resource list
Schoharie	Community playgroup flyers, playgroup survey for families
Warren	Monthly events calendar, follow-up questionnaire
Washington	Newsletter, parent questionnaire, letter to families

Cohort 2 Projects

21



21

September 24, 2020

22

Westchester Institute
for Human Development

Looking for fun, educational, FREE, kid-friendly events in your area?

Like us on Facebook!

Visiting our Facebook page is a quick and easy way to find out about local events and activities geared towards families!

Go to: www.facebook.com/EssexCountyPublicHealth

HEALTH DEPARTMENT
Children's Services Unit
518-871-3500

Essex County

August 2019 *Academic Schedule*

1	2	3	4	5	6	7	8	9	10	11	12	13	14	15	16	17	18	19	20	21	22	23	24	25	26	27	28	29	30	31
...

Warren County

Summer Newsletter 2019

Summer Sensory Play

Non-Nutty Tips:
Use a combination of non-nutty strategies to prevent your child from eating dangerous items and having one risk factor convert to the other.

- **Sunscreen**
- **Hat**
- **Sunglasses**
- **Long sleeve shirt**
- **Umbrella**

Ask your Service Coordinator how you can get FREE sunscreen!

Beaches in Washington County:
Pulaski Landing (Whitehall)
Lake Umbagog (Cambridge)
Brookly Beach (Fort Edward)

Did you know? Your child's therapist can work around your vacation plans this summer. It's highly important to keep therapy consistent and to experience all activities when your therapist is there!

- Download and print.
- Watch and participate during sessions. Don't be afraid to talk with your child's provider.
- Ask child's provider to email reports to your service coordinator. (See number 1 on this sheet).
- Email your child's provider informed of all strategies.
- This communication book is used to track and report progress.

Washington County

Cohort 2 Projects

22



22

September 24, 2020

23



Westchester Institute
for Human Development

Cohort Experiences

Counties enjoyed:

- Receiving input from other counties
- Sharing resources across counties
- Learning that all are striving to connect families more successfully within the community
- Hearing similar concerns and barriers
- Discussions/feedback with BEI
- Parent input and experiences



23



23

September 24, 2020

24



Westchester Institute
for Human Development

Cohort Barriers



- Family assessment
- Provider education and reminders to be more family focused in the delivery of EI services
- Making sure everyone is on the same page regarding purpose of EI and roles of everyone involved
- Rethinking timing of information delivery to families entering EI
- Helping parents understand the value of accessing community

24



24

September 24, 2020

25

SSIP Training Series (WIHD)

Module	Developer / Presenter	Audience	Format
Overview of Early Intervention	Anne Marie Cellante, MEd & Jenna Lequia PhD	Families	Self-paced
Natural Environments	Anne Marie Cellante, MEd & Jenna Lequia PhD	Families	Self-paced
Family-Professional Partnerships	Anne Marie Cellante, MEd & Jenna Lequia PhD	Early Intervention Professionals	Self-paced
Strategies to Involve Parents in Early Intervention	Jenna Lequia, PhD	Early Intervention Professionals	Self-paced
Cultural and Linguistic Competency	Naydine Johnney, PsyD	Early Intervention Professionals	Self-paced
Routines-Based Interventions	Anne Marie Cellante, MEd & Jenna Lequia PhD	Early Intervention Professionals	Self-paced
Including Family Outcomes in the IFSP	Anne Marie Cellante, MEd & Jenna Lequia PhD	Early Intervention Professionals	Self-paced
Using Data to Inform Practice	Jenna Lequia, PhD	Early Intervention Professionals	Self-paced
Best Practices for Telehealth in EI	Anne Marie Cellante, MEd, Amy Lee, PsyD & Josie Hartnett, MPH	Early Intervention Professionals	Self-paced
Lessons Learned from IFaCT	Jenna Lequia, PhD	Families/Early Intervention Professionals	Live



25



UNIVERSITY of
ROCHESTER
MEDICAL CENTER

MEDICINE of THE HIGHEST ORDER

26

MEDICINE of THE HIGHEST ORDER



UNIVERSITY of
ROCHESTER
MEDICAL CENTER

26

Strong Center for Developmental Disabilities

University Center of Excellence in Developmental Disabilities (UCEDD) that promotes:

- Independence
- Productivity
- Integration & Inclusion



27

MEDICINE *of* THE HIGHEST ORDER



27

September 24, 2020

28

Strong Center for Developmental Disabilities (SCDD)

- 27 counties in 2 cohorts
- Geographically from Central to Western NY from the Canadian border in the north to Pennsylvania in the south and west
- From densely populated urban/suburban to very rural, sparsely populated counties
- Each with significant Social and Economic issues. Poverty and difficulty with access to care are common to both.



28

September 24, 2020

29

Cohort 1

Cayuga	Oneida	Seneca
Chemung	Onondaga	St. Lawrence
Cortland	Oswego	Thompson
Jefferson	Schuyler	Tioga
Lewis		Yates



29

September 24, 2020

30

Cohort 2

Allegany	Livingston	Orleans/Genesee
Cattaraugus	Monroe	Steuben
Chautauqua	Ontario	Wayne
Erie/Niagara		Wyoming



30

September 24, 2020

31

County Projects

- Chosen and designed by each county IFaCT team to meet individual county needs and resources.
- Because of joint county contacts as well as our monthly group calls, they knew what others were doing.
- Counties shared information and sometimes joined forces.



31

September 24, 2020

32

Project Categories

- All projects focused on information-sharing of available resources, EI family-friendly activities and connecting with other families.
- Platforms for doing so varied.



32

September 24, 2020

33

Platforms

- Facebook/Social media (within or outside of existing county platforms)
- Newsletters, email blasts
- In-person meetings and activities
- Contact through providers and service coordinators
- Web-based platforms for resources



33

September 24, 2020

34

Sample Projects

Jefferson County: Rural

- Closed Facebook page for EI families.
- Foster family connections, support and information sharing



34

September 24, 2020

35

COVID Response

- Speech therapy
- Education companies offering free subscriptions during the pandemic
- At-home developmental activities for children
- The Rhode Center food distribution
- Online pre-k math ideas
- At-home core strength ideas
- 100 at-home activities for kids during self isolation
- Self care ideas for parents
- CAPC drive through milk pick up
- A "no sew" mask tutorial



35

September 24, 2020

36

COVID Response cont.

- Local essential resources contact information regarding food, mental health, shelter and supplies, transportation and unemployment
- 4-H virtual family night
- Laurie Berkner music breaks every Monday, Wednesday and Friday
- Virtual dance classes hosted by a Special Education Teacher and Occupational Therapist
- Parent to Parent NYS Free webinars
- Nourish NY Food Distribution
- Summer Food program for children 18 and under 7/6-8/14
- CAPC food pickup
- Back to School in 2020 webinar hosted by NRCIL



36

September 24, 2020

37

Sample Projects

- **Erie/Niagara: Urban/suburban**
 - Developed an extensive website of user-friendly links to information, activities and services in Erie and Niagara Counties. Initially it was known as "The Hub," but that is now used by DOH/EI as the statewide information site. It is now called "The Pulse," and is easily accessible at:

www.Erie.gov/thepulse



37

September 24, 2020

38

Project Reach and Sustainability

- Most projects were able to reach every EI family in the respective county.
- Projects had individual sustainability plans depending on how projects were developed.



38

September 24, 2020

39

The elephant in the room

COVID-19

39

September 24, 2020

40

SSIP Training Series (SCDD)

Module	Developer / Presenter	Audience	Format
Engaging Families Through Facebook Groups	Jennifer Ward, MS	Families	Live Webinar (recording posted)
Making a Sensory Kit and Using Visual Supports	Jennifer Ward, MS	Early Intervention Professionals	Live Webinar (recording posted)
Understanding Autism	Suzannah Iadarola, PhD, BCBA-D	Families/Early Intervention Professionals	Recorded Webinar
Child Development: Birth – 12 Months	Kelley Yost, PhD	Families	Recorded Webinar
Child Development: 12 – 36 Months	Kelley Yost, PhD	Families	Recorded Webinar
Connecting Families to Resources	Susan Hetherington, Ph.D., and Valerie Smith, M.S., BCBA	Early Intervention Professionals	Live Webinar (recording posted)
Understanding the Family Experience	Carrie Burkin & Melissa Parish, Parent Advocates	Early Intervention Professionals	Recorded Webinar
Evaluating Program Outcomes for Early Intervention	Jennifer Ward, MS	Early Intervention Professionals	Live Webinar (recording posted)
Education, Assessment, & Treatment of Children with Feeding Difficulties	Kim Brown, PhD	Families/Early Intervention Professionals	Recorded Webinar
Toileting Training	Daniel Mruzek, PhD	Early Intervention Professionals	Recorded Webinar



40

September 24, 2020

41

State Systemic Improvement Plan

- Improve results for infants and toddlers with disabilities and their families
- Three phases: 2014 to 2020
 - First phase: data analysis and select measure (completed April 1, 2015)
 - Second phase: plan to align infrastructure and evaluate (completed April 1, 2016)
 - Third phase: implementation (report on progress each year)
 - Cohort 1 (February 2018 – Fall 2018)
 - Cohort 2 (Fall 2018 – Fall 2019)
 - Current report was submitted to the Office of Special Education Programs (OSEP) on April 1, 2020
 - Training (September 2019 – September 2020)
- **Continuation of Phase Three: SSIP 2020 - 2021**



41

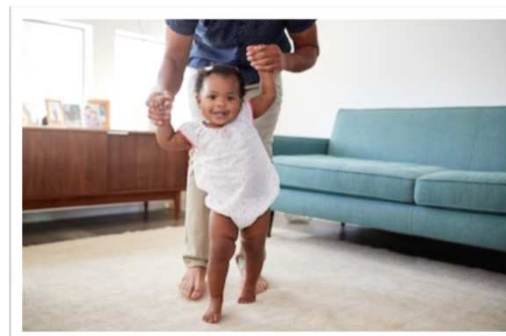
September 24, 2020

42

Next Steps (2020 – 2021)

Family Assessment

Family assessment means a voluntary **family-directed assessment** conducted by qualified personnel to identify family priorities, resources and concerns, which the family decides are relevant to their ability to enhance their child's development, and the supports and services necessary to enhance the family's capacity to meet the developmental needs of the family's infant or toddler with a disability.



42

September 24, 2020

43

Family Assessment

- The Department is analyzing State data on family assessments.
- Family assessments are not routinely completed during multidisciplinary evaluations (MDEs).
- In 2018-2019, 4,672 family assessments were completed out of 54,186 children who had a completed MDE.



43

September 24, 2020

44

Family Assessment

Strategies for improvement:

- Use the term family-directed assessment
- Require or recommend a specific family assessment tool or tools be used across the State by all EI providers
- Develop a family assessment template to assist with documentation purposes
- Develop/disseminate procedural guidance
- Develop specific training for providers on the benefits of completing family assessments and how to provide an explanation of the benefits to families
- Develop a brochure and vignette for families



44

September 24, 2020

45

thank
you!



45

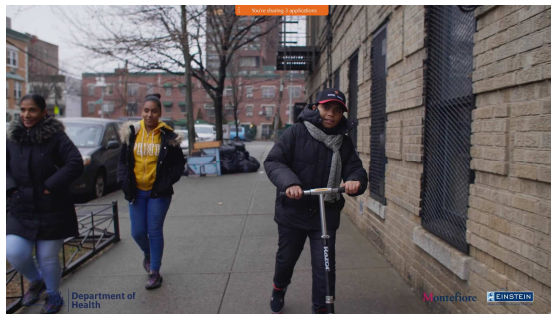
September 24, 2020

46

RFK Video

Parents' Perspectives: A Family's Journey to Early Intervention

Lisette Cruz
and Manny Acevedo



46

Questions?



Bureau of Early Intervention:
(518) 473-7016

BEI.SSIP@health.ny.gov