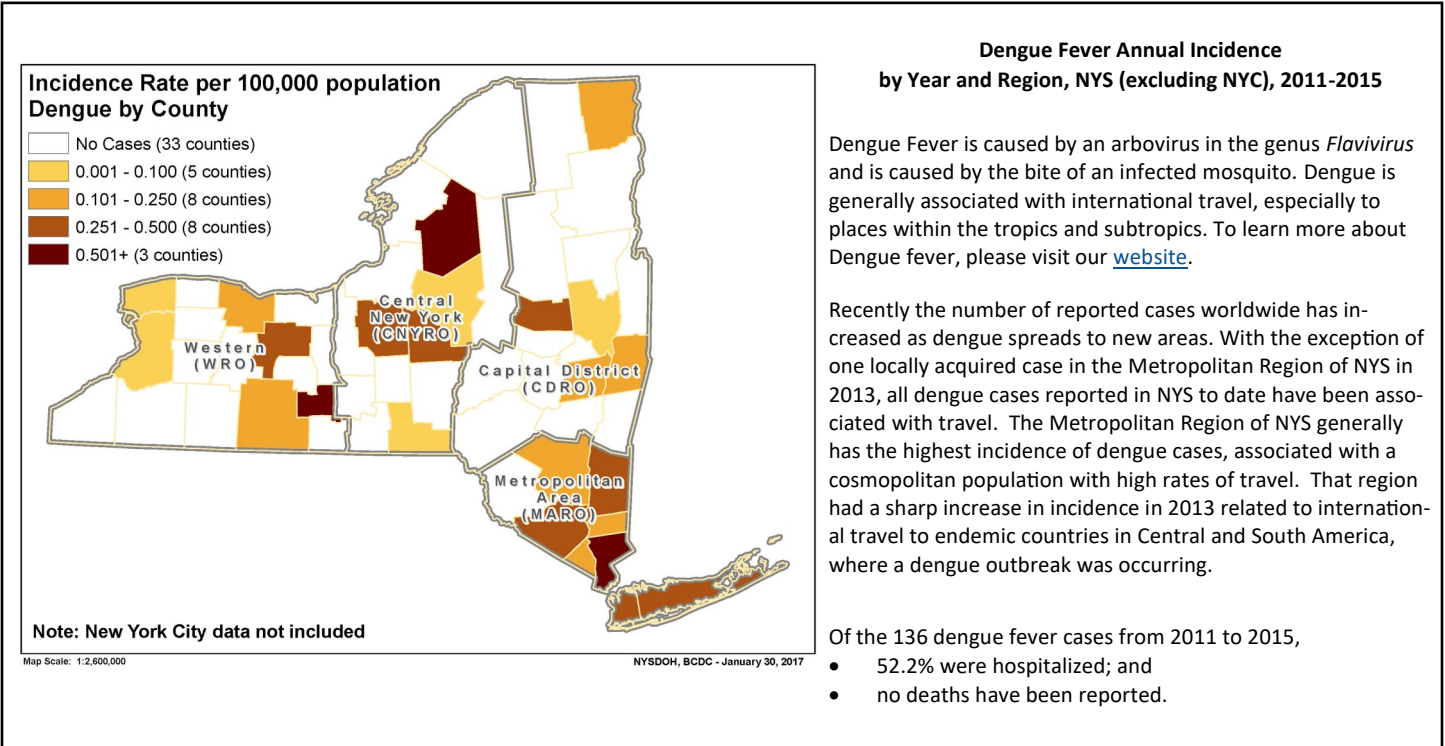
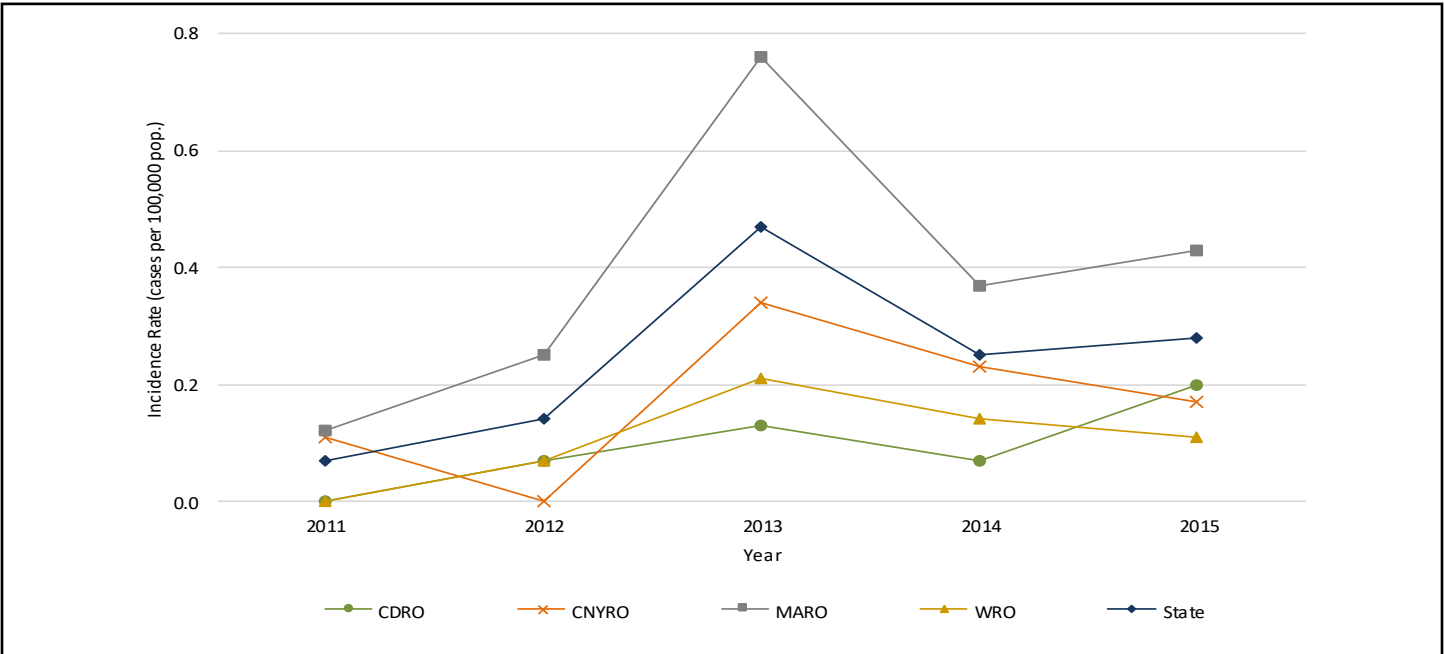


Dengue Fever

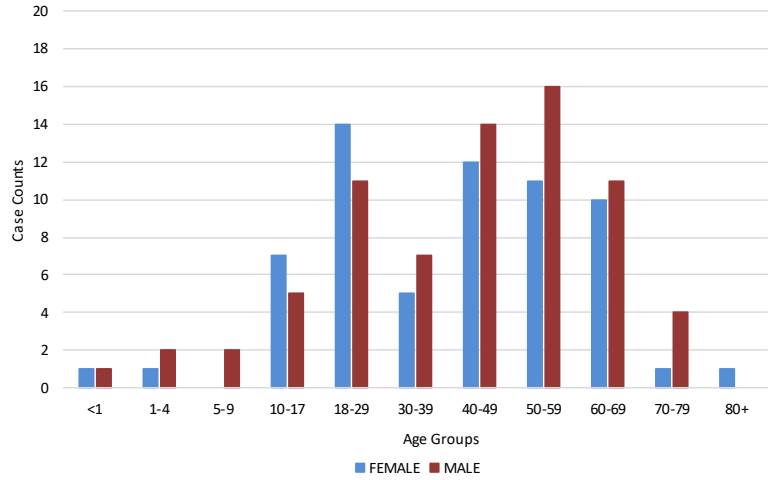


Region	Cases and Incidence Rate (per 100,000 pop), NYS (excluding NYC), By Year and Region (2011-2015)											
	2011		2012		2013		2014		2015		Total	
	N	Rate	N	Rate	N	Rate	N	Rate	N	Rate	N	Rate
CDRO	0	0	1	0.07	2	0.13	1	0.07	3	0.2	7	0.09
CNYRO	2	0.11	0	0	6	0.34	4	0.23	3	0.17	15	0.17
MARO	6	0.12	13	0.25	39	0.76	19	0.37	22	0.43	99	0.39
WRO	0	0	2	0.07	6	0.21	4	0.14	3	0.11	15	0.11
State	8	0.07	16	0.14	53	0.47	28	0.25	31	0.28	136	0.24



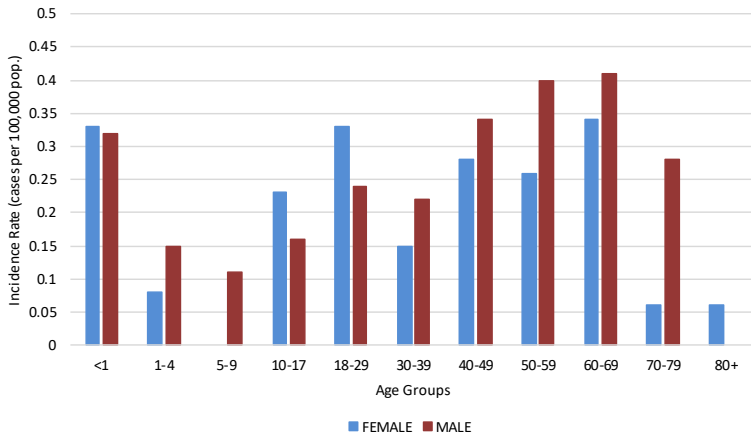
**Dengue 5-Year Cumulative Frequency
by Age Group and Gender,
NYS (excluding NYC), 2011-2015**

The highest number of cases is seen in men 50 to 59 and 40 to 49 years of age. In females the highest number of cases is seen in those 18 to 29 years of age.



**Dengue 5-Year Average Incidence Rate
by Age Group and Gender,
NYS (excluding NYC), 2011-2015**

The highest burden of disease is seen among infants. Other than in infants, males show an increase in rates of dengue with increasing age. In females, other than infants, the highest rates are seen in young adults 18 to 29 and older women 60 to 69 years of age.



**Dengue Fever
by International Travel History and Location of
Travel,
NYS (excluding NYC), 2011-2015**

Dengue is predominantly found in the tropical and subtropical areas of the Americas, Asia, Africa, the Caribbean, and Oceania. Of the 136 cases of dengue reported in the past five years, 98.5% had recently traveled outside of the country. The remaining cases had an unknown travel history, with one locally acquired case in 2013. Fifty-five percent of cases had traveled to Central America or the Caribbean.

