

# BRFSS Brief

Number 1508

The Behavioral Risk Factor Surveillance System (BRFSS) is an annual statewide telephone survey of adults developed by the Centers for Disease Control and Prevention and administered by the New York State Department of Health. The BRFSS is designed to provide information on behaviors, risk factors, and utilization of preventive services related to the leading causes of chronic and infectious diseases, disability, injury, and death among the noninstitutionalized, civilian population aged 18 years and older.

## Breast Cancer Screening

New York State Adult Women, 2014

### Introduction and Key Findings

Breast cancer is the most commonly diagnosed cancer and the second leading cause of cancer death among women in New York State (NYS). Each year, approximately 15,000 women in NYS are newly diagnosed with breast cancer and approximately 2,640 die from the disease. Risk of breast cancer increases with age and varies across racial groups. White women are more likely than black women to be diagnosed with breast cancer, but are less likely to have breast cancer diagnosed at an advanced stage. Among women with breast cancer, black women are more likely than white women to die from the disease.<sup>1</sup>

Screening for breast cancer can increase the likelihood of identifying cancer at an early stage when treatment is most successful. Women aged 50 to 74 years should be screened with a mammogram every two years. Women aged 40 to 49 years, those with a family history or other risk factors for breast cancer, and those who have any symptoms or changes in their breasts should talk to their doctor about what screening schedule is right for them.<sup>2</sup> Although breast cancer screening recommendations may vary between organizations, each woman should be aware of her personal risk for breast cancer and decide, with her doctor, when to start screening.

NYS is close to achieving the Healthy People 2020 objective of 81.1% of women aged 50 to 74 receiving breast cancer screening every two years, with 78.6% of NYS women aged 50 to 74 indicating that they received a mammogram within the past two years.<sup>3</sup> However, the data suggest a decreasing trend in the proportion of women meeting the recommended screening guidelines (Figure 1). In addition, some subpopulations are less likely to be screened. In NYS, women aged 50 to 74 years without health insurance are significantly less likely to have received a mammogram within the past two years (51.7%) compared to women aged 50 to 74 years with health insurance (80.1%). Similarly, women aged 50 to 74 years without a regular health care provider are significantly less likely to have received a mammogram within the past two years (48.0%) compared to women aged 50 to 74 years with a regular health care provider (80.3%) (Figure 2). However, of NYS women aged 50 to 74 who have not received a mammogram within the past two years, 90.0% were insured (an estimated 493,000 women) and 85.7% had a regular health care provider (an estimated 491,000 women; data not shown). These data indicate a need to improve screening in both the insured and uninsured populations.

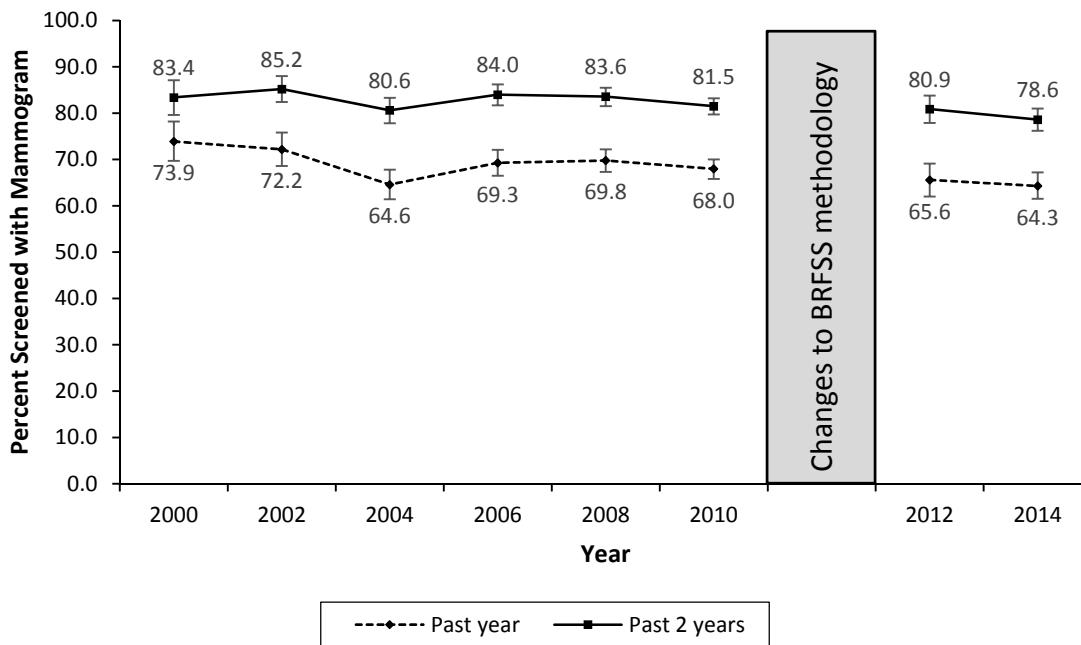
### BRFSS Questions

1. A mammogram is an x-ray of each breast to look for breast cancer. Have you ever had a mammogram?

[If “yes”]

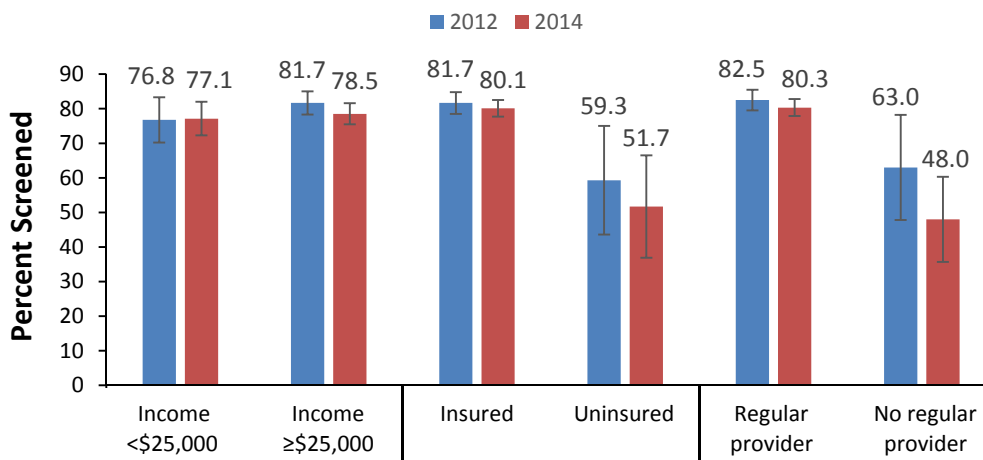
2. How long has it been since you had your last mammogram?

**Figure 1. History of mammogram (within past year, within past 2 years) among New York State women aged 50 to 74 years, by BRFSS survey year from 2000 to 2014**



\*Data from 2012 and 2014 are not comparable to prior years because of changes to the BRFSS methods in 2011. See the following link for more information on these changes: [http://www.cdc.gov/mmwr/preview/mmwrhtml/mm6122a3.htm?s\\_cid=mm6122a3\\_w](http://www.cdc.gov/mmwr/preview/mmwrhtml/mm6122a3.htm?s_cid=mm6122a3_w)  
 Note: Error bars represent 95% confidence intervals.

**Figure 2. Percent screened by mammography within the past 2 years among New York State women aged 50 to 74 years by income, insurance and regular health care provider status, BRFSS 2012 and 2014 survey years**



Note: Error bars represent 95% confidence intervals.

## History of mammogram (ever, within past year, within past 2 years) among New York State women aged 50 to 74 years, by selected characteristics, BRFSS 2014 survey

	Estimated population size <sup>a</sup>	Mammogram history					
		Ever		Within past year		Within past 2 years	
		% <sup>b</sup>	95% CI <sup>b</sup>	% <sup>b</sup>	95% CI <sup>b</sup>	% <sup>b</sup>	95% CI <sup>b</sup>
<b>Total NYS [N=1,762]</b>	2,690	95.8	94.6-97.1	64.3	61.5-67.2	78.6	76.2-81.0
<b>Race/Ethnicity</b>							
White non-Hispanic	1,706	95.7	94.3-97.1	63.2	60.0-66.4	78.1	75.3-80.8
Black non-Hispanic	341	97.1	94.7-99.5	66.1	58.5-73.8	82.0	75.6-88.4
Hispanic	381	98.2	95.9-100.0	72.4	63.7-81.1	87.2	81.7-92.6
Other non-Hispanic	206	89.3	79.1-99.4	56.9	41.6-72.3	62.8	48.0-77.6
<b>Annual household income</b>							
< \$25,000	676	95.2	92.9-97.4	60.4	54.5-66.3	77.1	72.3-82.0
\$25,000 - <\$50,000	522	94.4	91.2-97.6	63.0	56.4-69.7	75.2	69.3-81.1
≥ \$50,000	1,123	97.3	96.0-98.7	65.6	61.4-69.8	80.1	76.5-83.7
Missing <sup>c</sup>	369	94.6	89.0-100.0	69.6	61.3-77.8	81.5	74.2-88.7
<b>Educational attainment</b>							
Less than high school	340	97.0	94.0-100.0	73.6	64.2-82.9	84.0	76.7-91.3
High school or GED	769	95.2	92.7-97.6	63.0	57.5-68.5	76.8	72.0-81.5
Some post-high school	726	96.3	94.3-98.3	61.1	55.5-66.8	77.5	72.8-82.3
College graduate	837	96.7	95.1-98.4	65.2	61.1-69.4	79.9	76.3-83.5
<b>Primary health care coverage</b>							
Private insurance	1,571	95.9	94.1-97.7	64.1	60.3-67.8	79.7	76.5-82.8
Medicare	588	97.0	95.1-98.8	67.8	62.6-73.1	79.5	75.0-84.0
Medicaid	252	99.3	97.9-100.0	73.0	63.1-83.0	88.7	82.3-95.1
Other insurance	74	95.0	87.8-100.0	50.2	32.7-67.6	64.5	46.9-82.2
No insurance	114	82.2	71.0-93.3	40.7	26.3-55.1	51.7	36.9-66.5
<b>Regular health care provider</b>							
Yes	2,509	96.2	94.9-97.5	65.9	63.0-68.8	80.3	77.9-82.8
No	158	89.9	83.4-96.4	34.6	22.4-46.9	48.0	35.7-60.3
<b>Limitation<sup>d</sup></b>							
Yes	747	97.0	95.3-98.6	62.6	57.4-67.8	77.1	72.6-81.6
No	1,927	95.4	93.7-97.0	64.8	61.3-68.2	79.0	76.1-81.9
<b>Disability<sup>e</sup></b>							
Yes	755	96.2	94.2-98.3	64.6	59.2-70.0	78.5	74.0-83.1
No	1,907	96.1	94.8-97.4	64.6	61.3-67.9	79.1	76.3-81.9
<b>Residence</b>							
New York City (NYC)	1,082	96.3	94.0-98.5	64.9	59.9-69.8	79.8	75.7-83.9
NYS excluding NYC	1,608	95.6	94.0-97.1	64.0	60.5-67.4	77.8	74.8-80.8

<sup>a</sup> Estimated population size based on weighted frequencies from BRFSS, in thousands. Excludes individuals with missing data on breast cancer screening and each characteristic of interest.

<sup>b</sup> %=Percentage; 95% CI=Confidence Interval. Percentages are weighted to population characteristics.

<sup>c</sup> "Missing" category included because more than 10% of the sample did not report income.

<sup>d</sup> Activity limitations due to physical, mental, or emotional problems OR health problems that require the use of special equipment.

<sup>e</sup> Based on report of at least one type of disability (cognitive, ambulatory, vision, self-care, or independent living).

## References

1. Cancer Incidence and Mortality for New York State, 2008-2012. New York State Cancer Registry. New York State Department of Health, revised Nov. 2014. Available at <http://www.health.ny.gov/statistics/cancer/registry/>
2. What Screening Tests Are There? Breast Cancer Screening. Center for Disease Control and Prevention, updated Oct. 2014. Available at [http://www.cdc.gov/cancer/breast/basic\\_info/screening.htm](http://www.cdc.gov/cancer/breast/basic_info/screening.htm)
3. HealthyPeople.gov, 2020 Topics and Objectives: Cancer. U.S. Department of Health and Human Services, updated Aug. 2015. Available at <http://www.healthypeople.gov/2020/topicsobjectives2020/objectiveslist.aspx?topicid=5>

## Program Contributions

New York State Department of Health  
Bureau of Chronic Disease Evaluation and Research  
Bureau of Chronic Disease Control

## Order Information

### Copies may be obtained by contacting:

BRFSS Coordinator  
New York State Department of Health  
Bureau of Chronic Disease Evaluation and Research  
Empire State Plaza, Rm. 1070  
Corning Tower  
Albany, NY 12237-0679

### Or by phone or electronic mail:

(518) 473-0673

*or*

[BRFSS@health.ny.gov](mailto:BRFSS@health.ny.gov)

*or*

[www.health.ny.gov](http://www.health.ny.gov)

