

# eBRFSS 2013-2014 Health Indicators: North Country

General Description .....	2
Improve Health Status and Reduce Health Disparities .....	3
Percentage of adults who did not receive medical care because of cost .....	3
Percentage of adults who have a regular health care provider .....	4
Percentage of adults who had a dentist visit within the past year .....	5
Percentage of adults living with a disability.....	6
Percentage of adults aged 18-64 years with healthcare coverage .....	7
Percentage of adults aged 18-64 years who saw a doctor for a routine checkup within the last year .....	8
Percentage of adults experiencing housing insecurity in the past 12 months.....	9
Percentage of adults experiencing food insecurity in the past 12 months.....	10
Percentage of adults with poor self-reported health .....	11
Percentage of adults who report 14 or more days of poor physical health.....	12
Prevent Chronic Diseases .....	13
Percentage of adults who are obese .....	13
Percentage of adults with an annual household income less than \$25,000 who are obese .....	14
Percentage of adults living with a disability who are obese .....	15
Percentage of adults overweight or obese .....	16
Percentage of adults who participated in leisure time physical activity in the past 30 days.....	17
Percentage of adults who consume one or more sugary drinks daily .....	18
Percentage of adults who consume fast-food three or more times per week .....	19
Percentage of adults with physician-diagnosed diabetes.....	20
Percentage of adults who are current smokers.....	21
Percentage of adults with annual household income less than \$25,000 who are current smokers .....	22
Percentage of adults aged 18-24 years who are current smokers.....	23
Percentage of women aged 50-74 years receiving breast cancer screening based on recent guidelines .....	24
Percentage of women aged 50-74 years with annual household income of less than \$25,000 receiving breast cancer screening based on recent guidelines.....	25
Percentage of women aged 21-65 years receiving cervical cancer screening based on recent guidelines .....	26
Percentage of women aged 21-65 years with annual household income of less than \$25,000 receiving cervical cancer screening based on recent guidelines.....	27
Percentage of adults aged 50-75 years receiving colorectal cancer screening based on recent guidelines.....	28
Percentage of adults aged 50-75 years with annual household income less than \$25,000 receiving colorectal cancer screening based on recent guidelines.....	29
Percentage of adults who had a test for high blood sugar or diabetes within the past three years .....	30
Percentage of adults with physician-diagnosed prediabetes .....	31
Percentage of adults with physician-diagnosed high blood pressure.....	32
Percentage of adults with diagnosed high blood pressure taking high blood pressure medication .....	33
Percentage of adults with current asthma .....	34
Percent of adults with cholesterol checked.....	35
Percentage of adults 18 years and older with elevated cholesterol.....	36
Percentage of adults who have taken a course or class to learn how to manage their chronic disease or condition .....	37
Percentage of adults with arthritis .....	38
Promote a Healthy and Safe Environment .....	39
Percentage of adults who consider their neighborhood suitable for walking and physical activity.....	39
Percentage of adults aged 65+ years with at least one fall in the past 12 months.....	40
Among adults aged 65+ years with at least one fall in the past 12 months, percent that resulted in injury.....	41
Prevent HIV/STDs, Vaccine Preventable Diseases and Healthcare-Associated Infections.....	42
Percentage of adults aged 47-68 years reporting ever tested for Hepatitis C (HCV).....	42
Percentage of adults aged 18+ years with flu immunization in the past year .....	43
Percentage of adults aged 65+ years with flu immunization in the past year .....	44
Percentage of adults aged 65+ years with pneumococcal immunization.....	45
Promote Healthy Women, Infants, and Children .....	46
Percentage of women aged 18-44 years who had dental visit within the last year .....	46
Women aged 18-44 years who saw a doctor for a routine checkup within the last year.....	47
Percentage of women aged 18-64 years with health care coverage .....	48
Percentage of women aged 18-44 years whose health care provider discussed planning a healthy pregnancy .....	49
Promote Mental Health and Prevention Substance Abuse .....	50
Percentage of adults with poor mental health for 14 or more days in the last month .....	50
Percentage of adult binge drinking during the past month.....	51
Percentage of cigarette smoking among adults who report poor mental health.....	52

## General Description

The New York State Expanded Behavioral Risk Factor Surveillance System 2013-2014 (2014 eBRFSS) was design to supplement the Center for Disease Control and Prevention (CDC) Behavioral Risk Factor Surveillance System (BRFSS), which is conducted annually in New York State. The purpose of the 2014 eBRFSS was to produce local information on key public health issues. Data for the project were collected from April 15, 2013 to May 10, 2014. The 2014 eBRFSS reached both households with landline telephones and households which only had cell phones. Like the annual BRFSS, New York State's 2014 eBRFSS was designed to be representative of the non-institutionalized adult household population, aged 18 years and older.

### Reported Health Indicators

There are a total of 50 health indicators included in the report. The health indicators include 10 measures included in the New York State Department of Health's Prevention Agenda, NYS Health Innovation Plan (SHIP), Delivery System Reform Incentive Payment (DSRIP) Program, or the NYS Community Health Indicator Reports (CHIRS). An additional 40 important health indicators are also included. The indicators are organized by the Priority Area of the Prevention Agenda and are reported statewide, by region, and by county.

### Data Collection Methodology, Sampling and Weighting

The data collection methods for the 2014 eBRFSS aligned with the CDC's standard annual BRFSS methods. The 2014 eBRFSS questionnaire used standard questions from the BRFSS. Survey interviews were conducted in both English and Spanish. There were 31,690 completed interviews.

The sampling plan for the eBRFSS was developed to result in valid health indicator estimates for New York City (NYC) and each of the 57 counties outside NYC. The sampling approach stratified landlines by county and implemented a disproportionate stratified sampling design that accounted for both listed-households and unlisted numbers. Cell phone households were accounted for through additional strata that covered contiguous groups of counties.

Data were weighted to represent the population using a methodology known as iterative proportional fitting (raking). Raking adjusted the data so that groups underrepresented in the sample were more accurately represented in the estimated rates. Raking also enabled surveys conducted by cell phone to be included in the weighting and to accurately match sample distributions of specified demographic characteristics of the population. The raking categories included in the eBRFSS were: age, gender, race/ethnicity, education, marital status, owner/renter status, telephone usage (i.e. landline and cell phone combinations), and county of residence.

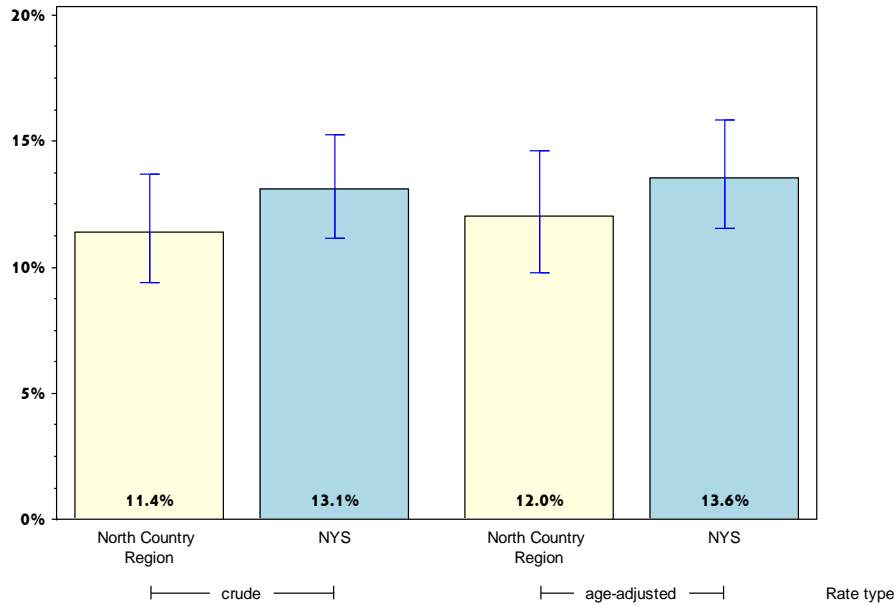
### Limitations of Data Use:

During data analysis, criteria were applied to suppress rates based on too few surveys to be reliable and to identify rates that are highly variable. Rates in which less than 10 respondents were in the numerator or less than 50 respondents were in the denominator were considered unreliable and suppressed from reporting. Rates considered to have high variability due to having confidence limits greater than  $\pm 10\%$  are noted.

# North Country

## Improve Health Status and Reduce Health Disparities

Percentage of adults who did not receive medical care because of cost\*



	North Country				Statewide			
	Est. # of Adults	Percent	Lower 95% limit	Upper 95% limit	Est. # of Adults	Percent	Lower 95% limit	Upper 95% limit
<b>Total</b>	28,018	11.4	9.4	13.7	1,994,210	13.1	11.2	15.3
<b>Age</b>								
18-24	4,414	11.9 <sup>^</sup>	5.7	23.4	281,654	14.1 <sup>^</sup>	7.5	25.1
25-34	5,416	17.9	11.0	27.7	537,866	19.7	14.2	26.6
35-44	4,524	13.0	8.2	20.0	423,154	17.0	12.3	23.0
45-64	10,765	11.6	9.1	14.6	596,074	11.9	9.8	14.3
65+	2,625	5.2	3.1	8.7	139,733	5.1	3.0	8.4
<b>Race</b>								
White, NH	25,274	11.8	9.6	14.4	959,531	10.5	8.7	12.7
Black, NH		#			335,184	15.5	10.0	23.4
Hispanic		#			465,114	18.4	14.5	23.0
Other, NH	1,436	10.0 <sup>^</sup>	4.6	20.1	234,381	16.3 <sup>^</sup>	7.3	32.6
<b>Sex</b>								
Male	13,644	10.7	7.7	14.7	890,677	12.3	9.6	15.5
Female	14,374	12.1	9.7	14.9	1,103,533	13.8	11.2	16.9
<b>Age-adjusted<sup>&amp;</sup></b>		12.0	9.8	14.6		13.6	11.6	15.8

\* Among people needing to see a doctor in the past 12 months

& Percent is age adjusted to the 2000 United States Population.

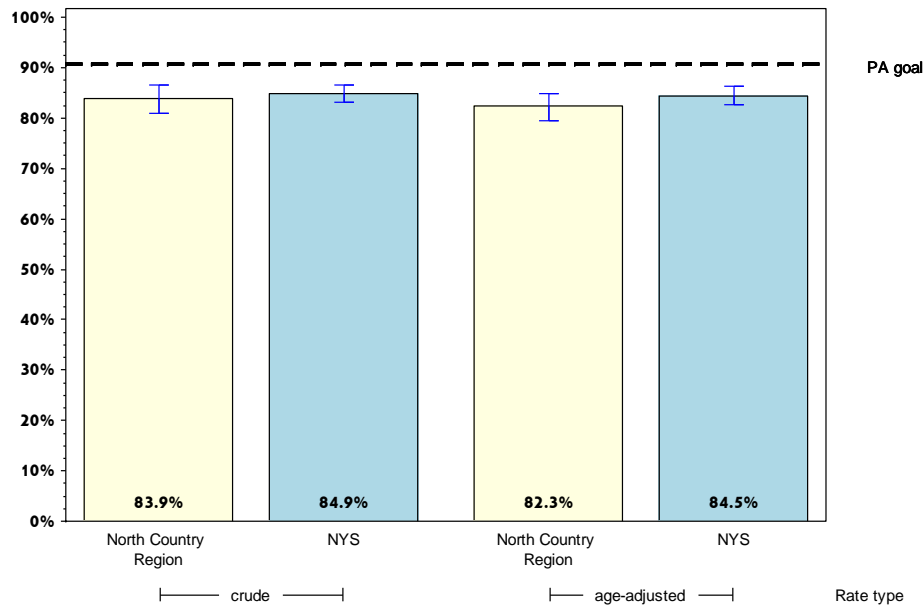
# Rates with <10 in the numerator or <50 in the denominator are suppressed.

<sup>^</sup> Highly variable rate (confidence interval with a half-width greater than 10).

# North Country

## Improve Health Status and Reduce Health Disparities

Percentage of adults who have a regular health care provider



	North Country				Statewide			
	Est. # of Adults	Percent	Lower 95% limit	Upper 95% limit	Est. # of Adults	Percent	Lower 95% limit	Upper 95% limit
<b>Total</b>	205,922	83.9	80.8	86.6	12,905,860	84.9	83.1	86.6
<b>Age</b>								
18-24	22,744	61.6 <sup>^</sup>	47.4	74.2	1,486,954	76.3	69.8	81.8
25-34	20,035	66.6	57.8	74.3	1,983,479	72.3	66.1	77.7
35-44	29,229	83.9	77.7	88.7	2,091,488	84.7	79.6	88.7
45-64	85,160	91.8	89.1	93.9	4,450,345	88.6	85.5	91.1
65+	47,824	96.1	94.4	97.3	2,640,269	96.0	94.7	97.1
<b>Race</b>								
White, NH	181,641	85.0	82.2	87.5	7,996,007	88.0	86.6	89.3
Black, NH		#			1,926,090	89.0	83.6	92.7
Hispanic		#			1,725,153	68.6	61.2	75.1
Other, NH	12,078	84.6 <sup>^</sup>	68.5	93.3	1,258,610	87.9	79.9	93.0
<b>Sex</b>								
Male	98,478	77.7	72.4	82.3	5,804,831	80.1	77.1	82.8
Female	107,444	90.5	87.9	92.5	7,101,029	89.3	87.0	91.3
<b>Age-adjusted<sup>&amp;</sup></b>		82.3	79.4	84.9		84.5	82.5	86.2

& Percent is age adjusted to the 2000 United States Population.

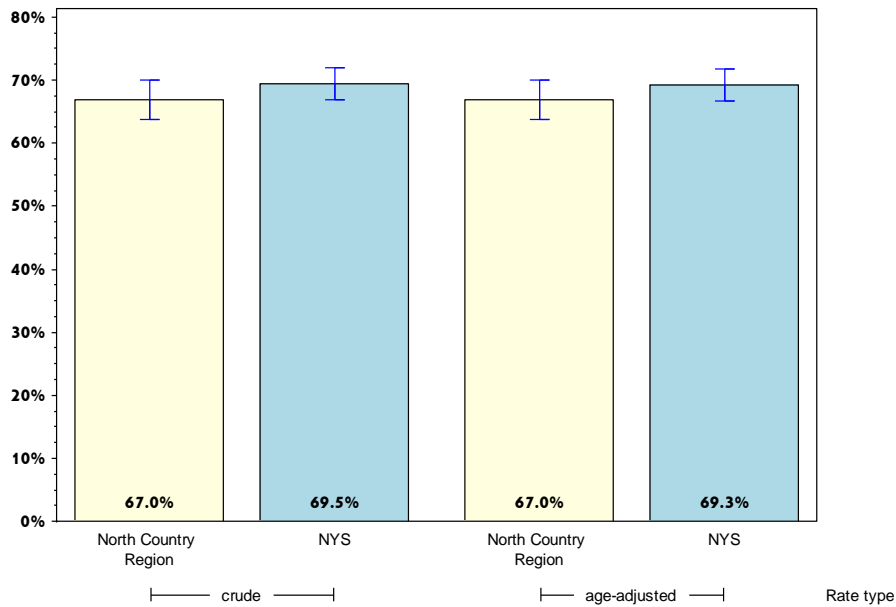
# Rates with <10 in the numerator or <50 in the denominator are suppressed.

<sup>^</sup> Highly variable rate (confidence interval with a half-width greater than 10).

# North Country

## Improve Health Status and Reduce Health Disparities

Percentage of adults who had a dentist visit within the past year



	North Country				Statewide			
	Est. # of Adults	Percent	Lower 95% limit	Upper 95% limit	Est. # of Adults	Percent	Lower 95% limit	Upper 95% limit
<b>Total</b>	154,725	67.0	63.8	70.0	9,774,786	69.5	66.9	72.0
<b>Age</b>								
18-24	23,796	69.1 <sup>^</sup>	54.4	80.7	1,100,494	62.2 <sup>^</sup>	51.0	72.2
25-34	17,522	61.9	52.6	70.4	1,624,123	65.1	57.7	71.8
35-44	23,269	71.2	63.6	77.7	1,687,707	71.9	65.2	77.8
45-64	60,242	68.6	64.1	72.7	3,421,923	72.6	69.3	75.7
65+	29,317	62.5	57.8	67.0	1,743,883	69.8	66.0	73.4
<b>Race</b>								
White, NH	134,170	66.5	63.2	69.6	6,152,109	72.4	70.1	74.6
Black, NH		#			1,309,282	66.6	57.4	74.7
Hispanic		#			1,435,933	62.9	55.3	70.0
Other, NH	8,104	66.0 <sup>^</sup>	48.8	79.9	877,462	66.5 <sup>^</sup>	52.1	78.4
<b>Sex</b>								
Male	74,708	62.7	57.5	67.7	4,591,800	67.3	63.4	71.1
Female	80,018	71.5	67.8	74.9	5,182,986	71.6	68.1	74.8
<b>Age-adjusted<sup>&amp;</sup></b>		67.0	63.7	70.1		69.3	66.6	71.8

& Percent is age adjusted to the 2000 United States Population.

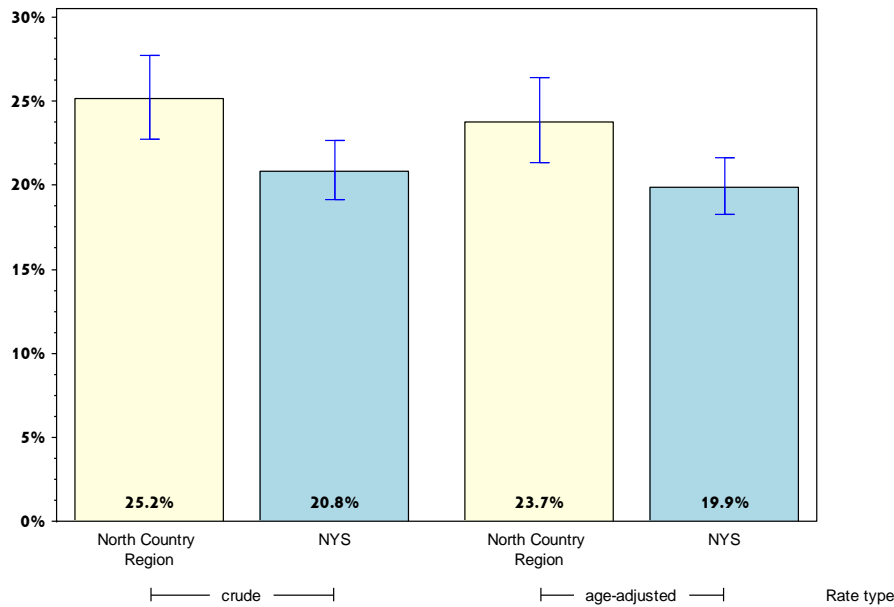
# Rates with <10 in the numerator or <50 in the denominator are suppressed.

<sup>^</sup> Highly variable rate (confidence interval with a half-width greater than 10).

# North Country

## Improve Health Status and Reduce Health Disparities

### Percentage of adults living with a disability\*



	North Country				Statewide			
	Est. # of Adults	Percent	Lower 95% limit	Upper 95% limit	Est. # of Adults	Percent	Lower 95% limit	Upper 95% limit
<b>Total</b>	60,646	25.2	22.7	27.7	3,111,131	20.8	19.1	22.7
<b>Age</b>								
18-24	3,275	9.0	4.6	16.7	119,872	6.1	4.3	8.5
25-34	5,204	17.7 <sup>^</sup>	10.7	27.8	426,647	16.0	10.8	23.2
35-44	6,132	17.9	12.9	24.2	294,471	12.2	9.7	15.3
45-64	26,345	29.2	25.4	33.2	1,195,176	24.2	21.6	27.1
65+	19,465	39.5	35.1	44.0	989,611	36.8	33.1	40.6
<b>Race</b>								
White, NH	55,271	26.2	23.7	28.9	2,187,495	24.4	22.4	26.6
Black, NH		#			332,469	15.8	11.9	20.7
Hispanic		#			420,342	17.0	12.7	22.5
Other, NH	3,669	28.2 <sup>^</sup>	17.1	42.8	170,824	12.3	7.7	19.1
<b>Sex</b>								
Male	29,650	23.9	20.3	27.8	1,349,486	18.9	16.3	21.9
Female	30,996	26.5	23.4	29.9	1,761,645	22.6	20.4	24.9
<b>Age-adjusted<sup>&amp;</sup></b>		23.7	21.3	26.4		19.9	18.3	21.6

\* Limited activities (physical, mental, or emotional problems); need of special equipment (e.g. cane, wheel chair).

& Percent is age adjusted to the 2000 United States Population.

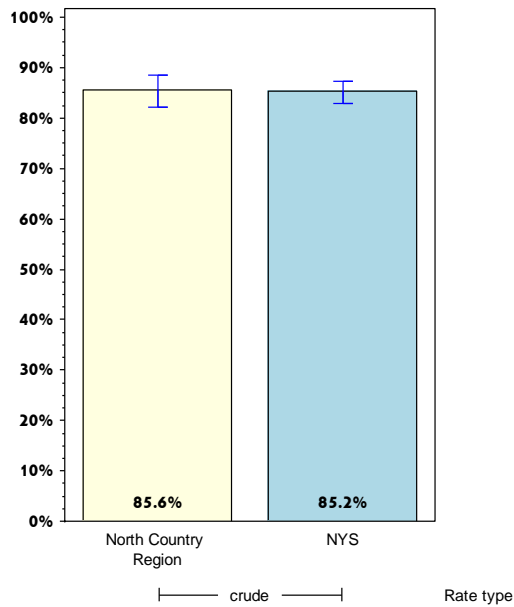
# Rates with <10 in the numerator or <50 in the denominator are suppressed.

<sup>^</sup> Highly variable rate (confidence interval with a half-width greater than 10).

# North Country

## Improve Health Status and Reduce Health Disparities

Percentage of adults aged 18-64 years with healthcare coverage



	North Country				Statewide			
	Est. # of Adults	Percent	Lower 95% limit	Upper 95% limit	Est. # of Adults	Percent	Lower 95% limit	Upper 95% limit
<b>Total</b>	165,949	85.6	82.2	88.4	10,275,389	85.2	82.8	87.3
<b>Age<sup>+</sup></b>								
18-24								
25-34								
35-44								
45-64								
65+								
<b>Race</b>								
White, NH	144,277	87.0	84.2	89.4	6,192,415	90.1	88.8	91.3
Black, NH		#			1,606,586	87.9	82.0	92.1
Hispanic		#			1,626,540	73.2	66.2	79.2
Other, NH	8,771	77.5 <sup>^</sup>	56.1	90.3	849,849	74.5 <sup>^</sup>	56.8	86.6
<b>Sex</b>								
Male	84,358	83.2	77.5	87.7	4,924,290	83.2	79.9	86.0
Female	81,591	88.1	84.6	91.0	5,351,099	87.2	83.4	90.2
<b>Age-adjusted<sup>+,&amp;</sup></b>								

& Percent is age adjusted to the 2000 United States Population.

+ Age-adjusted and age specific percent not generated for health indicators with age range limits.

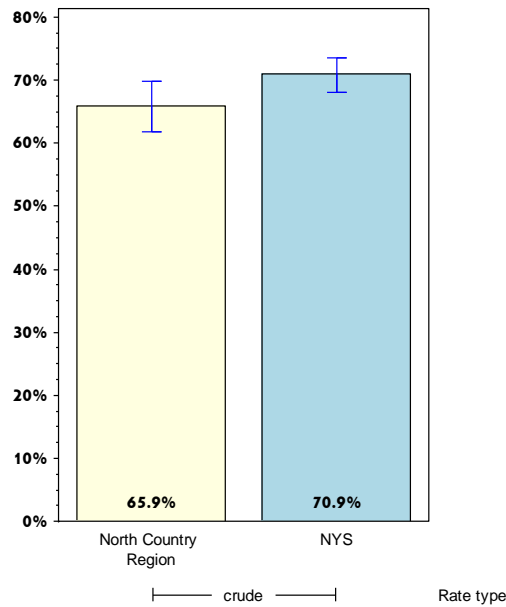
# Rates with <10 in the numerator or <50 in the denominator are suppressed.

<sup>^</sup> Highly variable rate (confidence interval with a half-width greater than 10).

# North Country

## Improve Health Status and Reduce Health Disparities

Percentage of adults aged 18-64 years who saw a doctor for a routine checkup within the last year



	North Country				Statewide			
	Est. # of Adults	Percent	Lower 95% limit	Upper 95% limit	Est. # of Adults	Percent	Lower 95% limit	Upper 95% limit
<b>Total</b>	127,809	65.9	61.7	69.9	8,622,736	70.9	68.1	73.5
<b>Age<sup>+</sup></b>								
18-24								
25-34								
35-44								
45-64								
65+								
<b>Race</b>								
White, NH	110,971	67.0	63.1	70.7	4,721,851	68.7	65.8	71.4
Black, NH		#			1,477,782	80.8	73.1	86.6
Hispanic		#			1,583,308	71.1	63.6	77.6
Other, NH	7,845	68.7 <sup>^</sup>	47.2	84.3	839,795	68.4 <sup>^</sup>	53.1	80.5
<b>Sex</b>								
Male	60,376	59.1	52.7	65.3	3,938,722	65.6	61.4	69.6
Female	67,432	73.4	68.7	77.7	4,684,014	76.0	72.3	79.4
<b>Age-adjusted<sup>+,&amp;</sup></b>								

& Percent is age adjusted to the 2000 United States Population.

+ Age-adjusted and age specific percent not generated for health indicators with age range limits.

# Rates with <10 in the numerator or <50 in the denominator are suppressed.

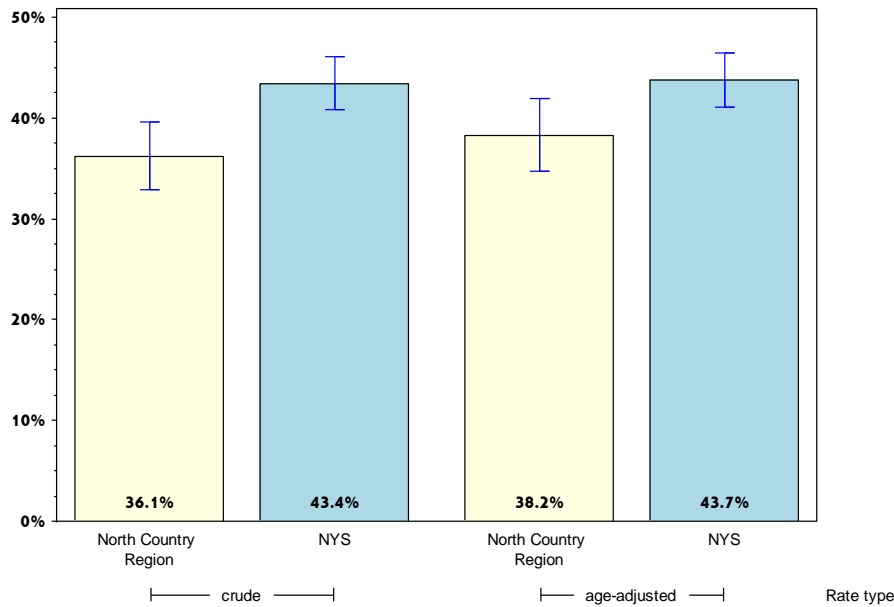
<sup>^</sup> Highly variable rate (confidence interval with a half-width greater than 10).



# North Country

## Improve Health Status and Reduce Health Disparities

Percentage of adults experiencing housing insecurity in the past 12 months\*



	North Country				Statewide			
	Est. # of Adults	Percent	Lower 95% limit	Upper 95% limit	Est. # of Adults	Percent	Lower 95% limit	Upper 95% limit
<b>Total</b>	79,887	36.1	32.9	39.6	5,967,540	43.4	40.8	46.1
<b>Age</b>								
18-24	11,808	41.7 <sup>^</sup>	26.6	58.5	487,620	30.7 <sup>^</sup>	21.3	42.0
25-34	14,248	50.1	40.4	59.8	1,403,277	57.7	50.8	64.3
35-44	13,402	43.6	35.8	51.7	1,180,494	50.7	43.4	57.9
45-64	31,270	36.3	31.9	40.9	2,100,265	44.9	41.4	48.4
65+	9,032	19.5	15.9	23.5	688,870	27.8	23.8	32.1
<b>Race</b>								
White, NH	69,765	36.2	33.0	39.6	3,030,019	36.7	34.3	39.2
Black, NH		#			1,078,432	55.5	46.2	64.3
Hispanic		#			1,268,822	57.3	49.7	64.6
Other, NH	3,510	27.9 <sup>^</sup>	16.2	43.7	590,266	44.6 <sup>^</sup>	31.2	58.9
<b>Sex</b>								
Male	39,358	34.5	29.4	40.1	2,630,128	40.1	36.1	44.2
Female	40,528	37.9	33.9	42.0	3,337,412	46.5	43.0	50.0
<b>Age-adjusted<sup>&amp;</sup></b>		38.2	34.7	41.9		43.7	41.0	46.5

\* Worried or stressed about having enough money to pay for rent or mortgage.

& Percent is age adjusted to the 2000 United States Population.

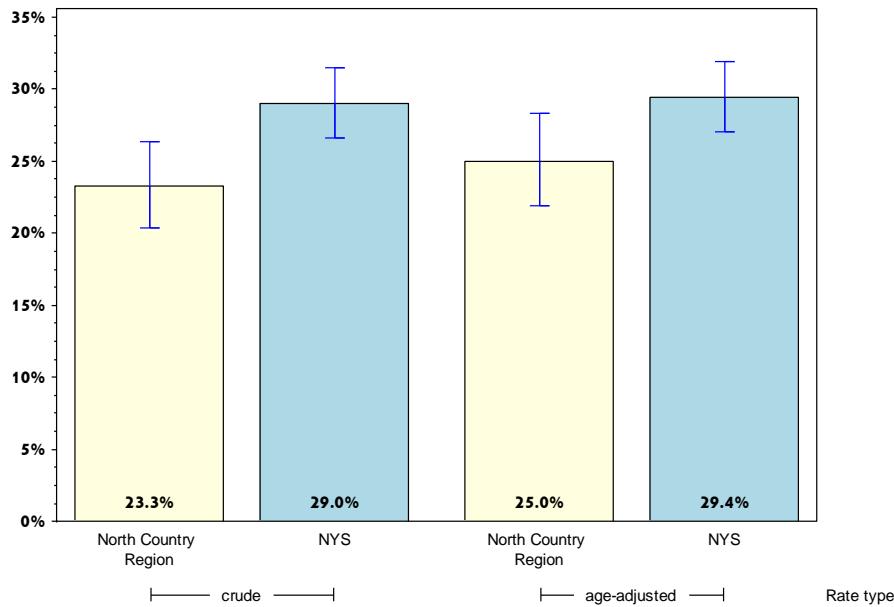
# Rates with <10 in the numerator or <50 in the denominator are suppressed.

<sup>^</sup> Highly variable rate (confidence interval with a half-width greater than 10).

# North Country

## Improve Health Status and Reduce Health Disparities

Percentage of adults experiencing food insecurity in the past 12 months\*



	North Country				Statewide			
	Est. # of Adults	Percent	Lower 95% limit	Upper 95% limit	Est. # of Adults	Percent	Lower 95% limit	Upper 95% limit
<b>Total</b>	54,992	23.3	20.4	26.4	4,211,702	29.0	26.6	31.5
<b>Age</b>								
18-24	9,341	25.6 <sup>^</sup>	15.1	40.0	339,128	17.9	13.5	23.3
25-34	8,659	30.1 <sup>^</sup>	21.5	40.2	1,154,171	44.8	37.7	52.1
35-44	11,252	34.3	26.9	42.5	786,490	33.0	26.3	40.4
45-64	20,526	23.0	19.4	27.0	1,464,969	30.3	26.9	33.9
65+	5,056	10.5	7.7	14.1	405,259	15.6	12.5	19.3
<b>Race</b>								
White, NH	46,859	22.7	20.0	25.7	1,998,541	22.9	20.6	25.4
Black, NH		#			765,155	37.2	29.3	45.7
Hispanic		#			1,031,787	43.4	36.2	50.8
Other, NH	2,675	20.4 <sup>^</sup>	11.2	34.1	416,220	30.4 <sup>^</sup>	20.2	42.9
<b>Sex</b>								
Male	25,388	20.9	16.6	25.9	1,903,904	27.4	23.6	31.5
Female	29,604	25.8	22.3	29.7	2,307,798	30.5	27.5	33.6
<b>Age-adjusted<sup>&amp;</sup></b>		25.0	21.9	28.3		29.4	27.1	31.9

\* Worried or stressed about having enough money to buy nutritious meals.

& Percent is age adjusted to the 2000 United States Population.

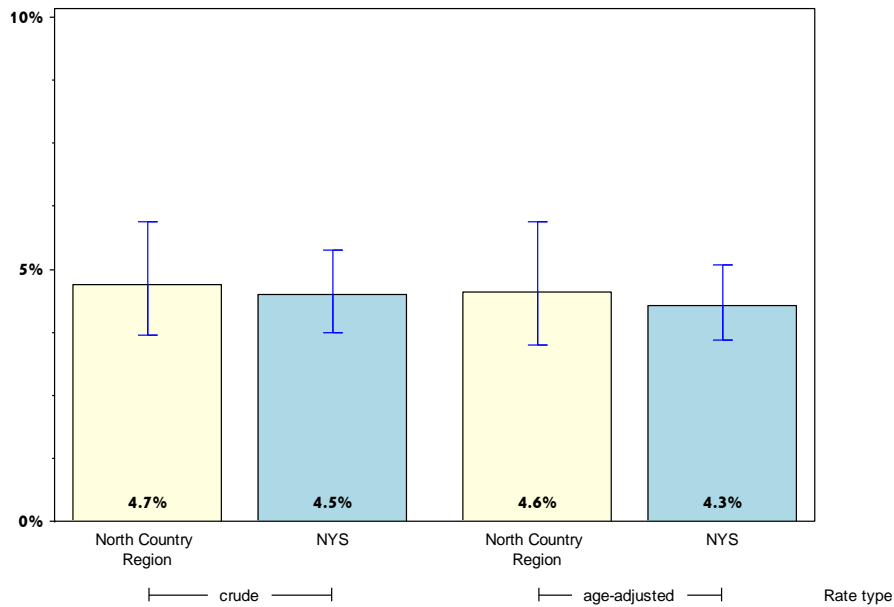
# Rates with <10 in the numerator or <50 in the denominator are suppressed.

<sup>^</sup> Highly variable rate (confidence interval with a half-width greater than 10).

# North Country

## Improve Health Status and Reduce Health Disparities

### Percentage of adults with poor self-reported health



	North Country				Statewide			
	Est. # of Adults	Percent	Lower 95% limit	Upper 95% limit	Est. # of Adults	Percent	Lower 95% limit	Upper 95% limit
<b>Total</b>	11,452	4.7	3.7	5.9	680,314	4.5	3.7	5.4
<b>Age</b>								
18-24	#				20,778	1.0	0.5	2.3
25-34	#				38,067	1.4	0.8	2.5
35-44	1,574	4.5	2.2	9.0	58,460	2.4	1.5	3.9
45-64	4,871	5.3	3.9	7.2	300,529	6.1	4.5	8.1
65+	3,854	7.8	5.2	11.5	248,637	9.1	6.9	12.0
<b>Race</b>								
White, NH	10,405	4.9	3.8	6.3	365,138	4.0	3.5	4.7
Black, NH	#				58,105	2.7	1.6	4.7
Hispanic	#				213,536	8.4	5.3	13.2
Other, NH	#				43,535	3.0	1.4	6.4
<b>Sex</b>								
Male	5,562	4.4	3.0	6.4	298,899	4.1	3.1	5.5
Female	5,890	5.0	3.6	6.8	381,415	4.8	3.9	6.0
<b>Age-adjusted<sup>&amp;</sup></b>		4.6	3.5	5.9		4.3	3.6	5.1

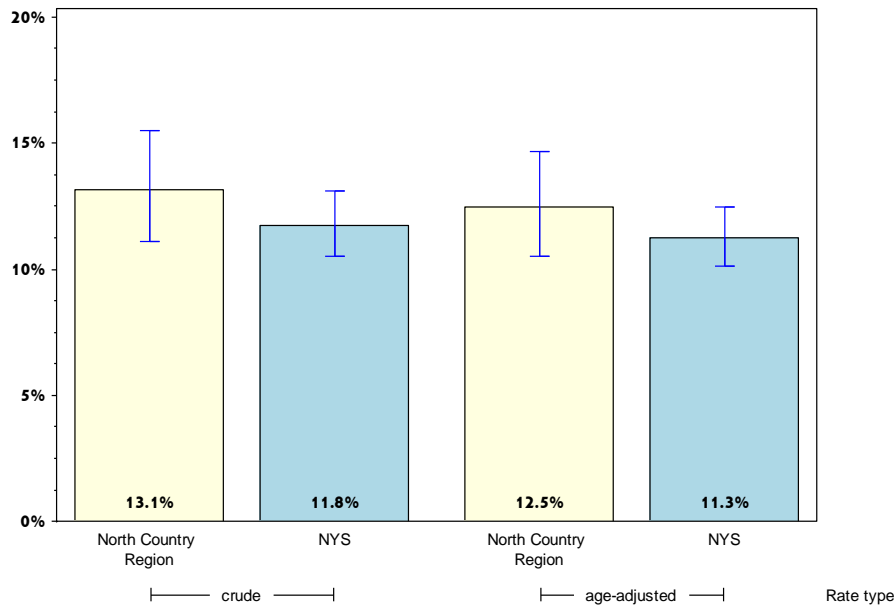
& Percent is age adjusted to the 2000 United States Population.

# Rates with <10 in the numerator or <50 in the denominator are suppressed.

# North Country

## Improve Health Status and Reduce Health Disparities

Percentage of adults who report 14 or more days of poor physical health\*



	North Country				Statewide			
	Est. # of Adults	Percent	Lower 95% limit	Upper 95% limit	Est. # of Adults	Percent	Lower 95% limit	Upper 95% limit
<b>Total</b>	31,544	13.1	11.1	15.5	1,717,941	11.8	10.5	13.1
<b>Age</b>								
18-24	#				59,108	3.1	1.9	5.1
25-34	2,490	8.2	4.2	15.4	184,980	7.0	4.8	10.0
35-44	3,606	10.6	6.8	16.0	176,691	7.2	5.2	9.9
45-64	15,979	17.7	13.8	22.4	763,670	15.8	13.5	18.5
65+	8,242	17.4	13.6	21.9	491,091	19.1	16.1	22.5
<b>Race</b>								
White, NH	26,807	12.9	11.0	15.0	1,043,432	11.8	10.7	13.0
Black, NH	#				188,315	9.3	6.3	13.5
Hispanic	#				372,059	16.0	11.5	21.9
Other, NH	3,627	25.6 <sup>^</sup>	11.2	48.3	114,135	8.1	4.7	13.7
<b>Sex</b>								
Male	14,649	11.8	9.2	15.0	722,008	10.3	8.7	12.3
Female	16,896	14.6	11.6	18.2	995,933	13.0	11.3	14.9
<b>Age-adjusted<sup>&amp;</sup></b>		12.5	10.5	14.7		11.3	10.1	12.5

\* Out of the past 30 days.

& Percent is age adjusted to the 2000 United States Population.

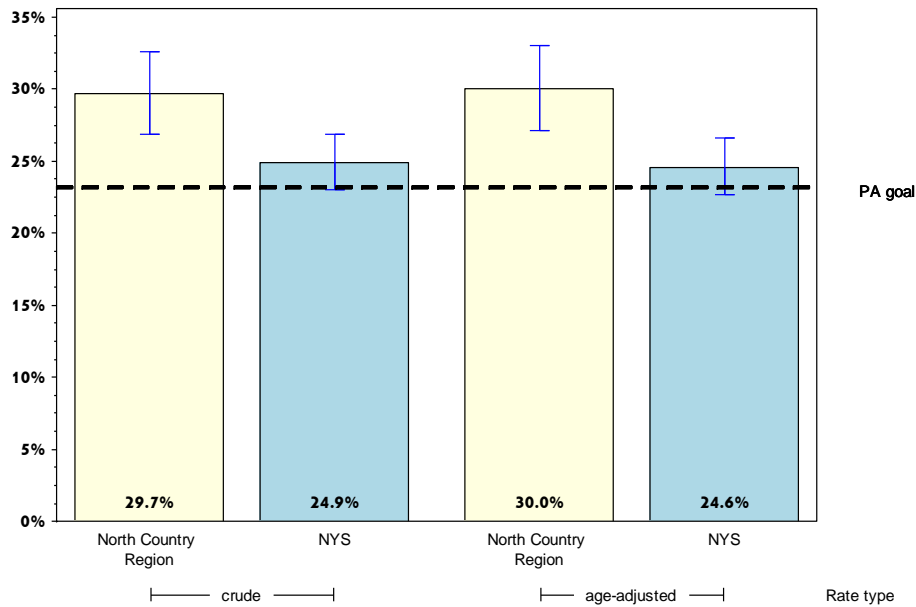
# Rates with <10 in the numerator or <50 in the denominator are suppressed.

<sup>^</sup> Highly variable rate (confidence interval with a half-width greater than 10).

# North Country

## Prevent Chronic Diseases

### Percentage of adults who are obese\*



	North Country				Statewide			
	Est. # of Adults	Percent	Lower 95% limit	Upper 95% limit	Est. # of Adults	Percent	Lower 95% limit	Upper 95% limit
<b>Total</b>	69,111	29.7	26.9	32.6	3,527,077	24.9	23.0	26.9
<b>Age</b>								
18-24	6,455	18.8 <sup>^</sup>	11.4	29.4	318,556	17.8	11.7	26.0
25-34	7,572	26.2	19.0	34.9	509,101	20.8	16.8	25.4
35-44	12,036	36.6	29.2	44.7	573,976	24.7	20.0	30.1
45-64	30,053	34.0	29.7	38.7	1,452,755	30.5	27.5	33.7
65+	12,924	26.9	23.1	31.0	615,010	23.4	20.1	27.0
<b>Race</b>								
White, NH	59,501	28.8	26.2	31.6	2,139,878	25.0	23.2	26.9
Black, NH		#			638,079	30.7	24.2	38.1
Hispanic		#			622,984	28.0	21.8	35.1
Other, NH	4,539	38.5 <sup>^</sup>	23.1	56.6	126,136	9.6	6.3	14.4
<b>Sex</b>								
Male	35,574	28.8	24.9	32.9	1,782,686	25.3	22.5	28.3
Female	33,537	30.7	26.9	34.8	1,744,390	24.5	22.0	27.1
<b>Age-adjusted<sup>&amp;</sup></b>		30.0	27.1	33.0		24.6	22.7	26.6

\* Obesity defined as a Body Mass Index (BMI)  $\geq 30$ . BMI is calculated based on weight and height.

& Percent is age adjusted to the 2000 United States Population.

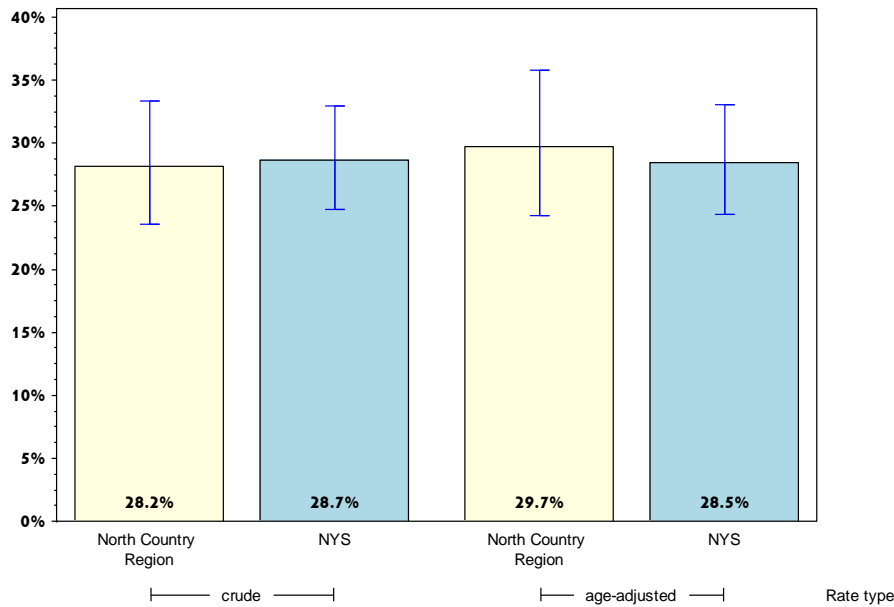
# Rates with  $<10$  in the numerator or  $<50$  in the denominator are suppressed.

<sup>^</sup> Highly variable rate (confidence interval with a half-width greater than 10).

# North Country

## Prevent Chronic Diseases

Percentage of adults with an annual household income less than \$25,000 who are obese\*



	North Country				Statewide			
	Est. # of Adults	Percent	Lower 95% limit	Upper 95% limit	Est. # of Adults	Percent	Lower 95% limit	Upper 95% limit
<b>Total</b>	16,539	28.2	23.6	33.3	1,029,079	28.7	24.7	33.0
<b>Age</b>								
18-24	#				88,578	21.3 <sup>^</sup>	10.0	39.7
25-34	1,941	22.4 <sup>^</sup>	10.9	40.5	177,054	26.6 <sup>^</sup>	17.0	39.0
35-44	#				165,333	28.8 <sup>^</sup>	19.5	40.3
45-64	5,921	30.9	23.5	39.5	386,736	34.8	28.0	42.1
65+	4,769	29.8	23.6	36.8	190,291	24.4	18.8	31.1
<b>Race</b>								
White, NH	13,731	27.4	22.7	32.7	500,787	30.3	25.6	35.4
Black, NH	#				165,021	25.3 <sup>^</sup>	16.7	36.3
Hispanic	#				287,948	30.1 <sup>^</sup>	21.1	41.0
Other, NH	#				75,322	23.1 <sup>^</sup>	12.4	39.0
<b>Sex</b>								
Male	6,267	24.1	17.4	32.2	386,764	23.8	18.1	30.5
Female	10,272	31.5	25.5	38.2	642,314	32.7	27.6	38.3
<b>Age-adjusted<sup>&amp;</sup></b>		29.7	24.3	35.8		28.5	24.3	33.0

\* Obesity defined as a Body Mass Index (BMI)  $\geq 30$ . BMI is calculated based on weight and height.

& Percent is age adjusted to the 2000 United States Population.

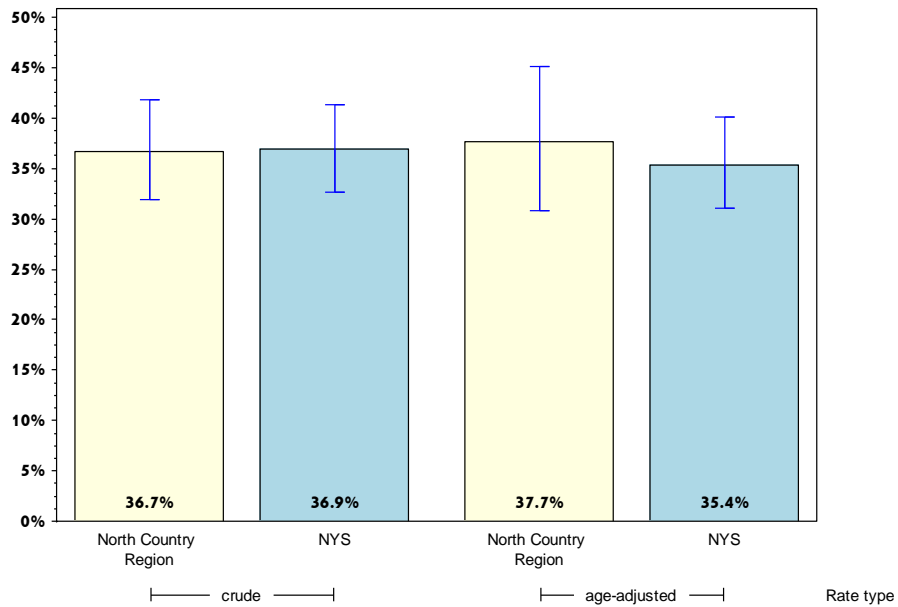
# Rates with  $<10$  in the numerator or  $<50$  in the denominator are suppressed.

<sup>^</sup> Highly variable rate (confidence interval with a half-width greater than 10).

# North Country

## Prevent Chronic Diseases

Percentage of adults living with a disability who are obese\*



	North Country				Statewide			
	Est. # of Adults	Percent	Lower 95% limit	Upper 95% limit	Est. # of Adults	Percent	Lower 95% limit	Upper 95% limit
<b>Total</b>	21,343	36.7	31.9	41.8	1,093,091	36.9	32.7	41.3
<b>Age</b>								
18-24	#				18,440	16.5 <sup>^</sup>	9.8	26.5
25-34	#				122,752	31.0 <sup>^</sup>	16.7	50.1
35-44	#				109,843	39.7 <sup>^</sup>	30.4	49.8
45-64	9,126	35.7	29.2	42.9	535,031	45.9	39.5	52.5
65+	6,663	36.4	29.5	43.9	283,502	30.3	25.2	36.1
<b>Race</b>								
White, NH	18,789	35.6	30.7	40.8	698,173	33.3	29.0	37.8
Black, NH	#				188,077	58.3 <sup>^</sup>	44.8	70.6
Hispanic	#				170,166	46.0 <sup>^</sup>	30.4	62.5
Other, NH	#				36,674	21.7 <sup>^</sup>	12.1	35.9
<b>Sex</b>								
Male	9,247	32.2	25.5	39.7	430,886	32.6	26.2	39.7
Female	12,096	41.2	34.8	47.9	662,205	40.4	35.1	45.8
<b>Age-adjusted<sup>&amp;</sup></b>		37.7	30.8	45.1		35.4	31.0	40.0

\* Obesity defined as a Body Mass Index (BMI)  $\geq 30$ . BMI is calculated based on weight and height. Limited activities (physical, mental, or emotional problems); need of special equipment (e.g. cane, wheel chair).

& Percent is age adjusted to the 2000 United States Population.

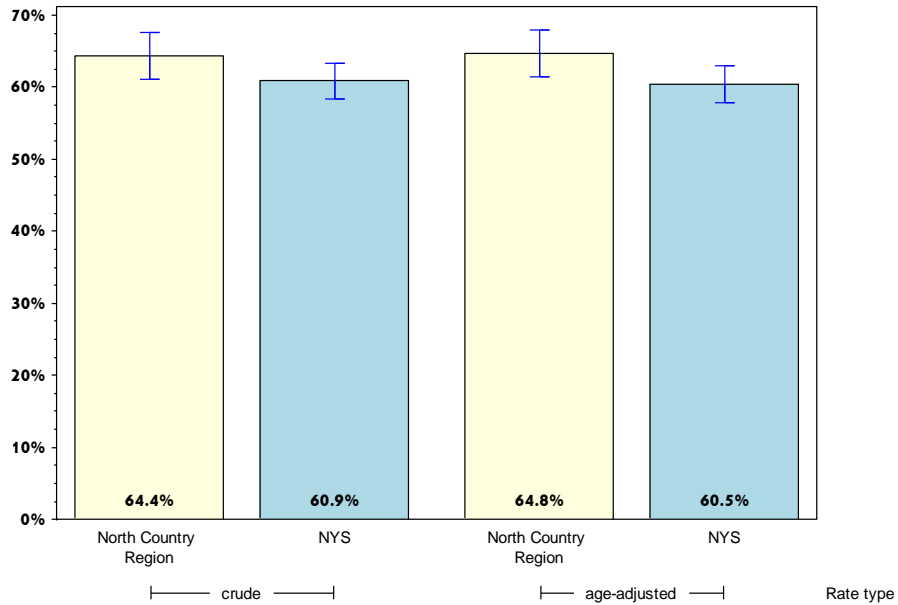
# Rates with  $<10$  in the numerator or  $<50$  in the denominator are suppressed.

<sup>^</sup> Highly variable rate (confidence interval with a half-width greater than 10).

# North Country

## Prevent Chronic Diseases

### Percentage of adults overweight or obese\*



	North Country				Statewide			
	Est. # of Adults	Percent	Lower 95% limit	Upper 95% limit	Est. # of Adults	Percent	Lower 95% limit	Upper 95% limit
<b>Total</b>	150,027	64.4	61.0	67.6	8,631,360	60.9	58.4	63.3
<b>Age</b>								
18-24	14,473	42.2 <sup>^</sup>	29.6	56.0	656,771	36.6	28.8	45.2
25-34	17,264	59.8	50.1	68.8	1,528,245	62.4	55.9	68.4
35-44	24,149	73.4	66.2	79.6	1,362,541	58.6	50.8	66.0
45-64	60,442	68.5	63.4	73.1	3,335,153	70.0	66.8	73.1
65+	33,445	69.5	65.4	73.4	1,632,723	62.1	58.1	65.9
<b>Race</b>								
White, NH	133,793	64.8	61.5	68.0	5,260,942	61.5	59.3	63.5
Black, NH		#			1,520,031	73.1	63.8	80.7
Hispanic		#			1,346,413	60.5	52.9	67.5
Other, NH	6,822	57.9 <sup>^</sup>	40.1	73.9	503,974	38.4 <sup>^</sup>	28.1	49.9
<b>Sex</b>								
Male	84,846	68.6	63.4	73.4	4,736,847	67.1	63.2	70.8
Female	65,181	59.6	55.4	63.7	3,894,512	54.7	51.4	57.9
<b>Age-adjusted<sup>&amp;</sup></b>		64.8	61.4	68.0		60.5	57.9	63.0

\* Defined as a Body Mass Index (BMI) >=25. BMI is calculated based on weight and height.

& Percent is age adjusted to the 2000 United States Population.

# Rates with <10 in the numerator or <50 in the denominator are suppressed.

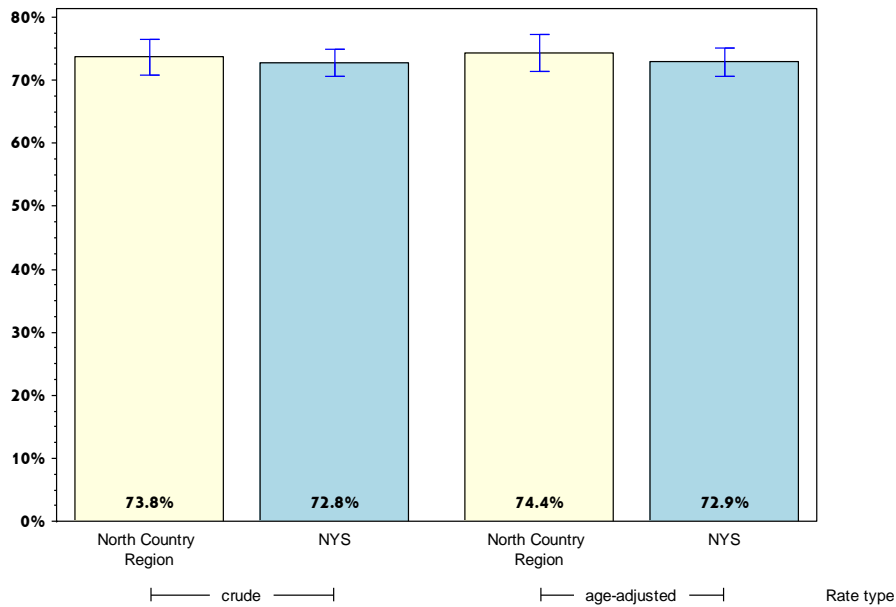
<sup>^</sup> Highly variable rate (confidence interval with a half-width greater than 10).



# North Country

## Prevent Chronic Diseases

Percentage of adults who participated in leisure time physical activity in the past 30 days\*



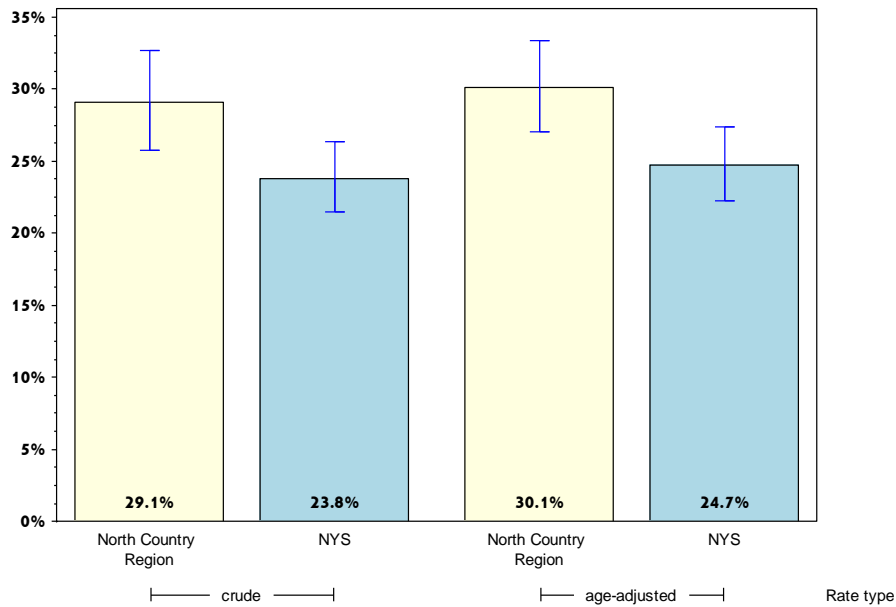
	North Country				Statewide			
	Est. # of Adults	Percent	Lower 95% limit	Upper 95% limit	Est. # of Adults	Percent	Lower 95% limit	Upper 95% limit
<b>Total</b>	175,499	73.8	70.8	76.5	10,681,161	72.8	70.6	74.9
<b>Age</b>								
18-24	29,851	82.0 <sup>^</sup>	67.1	91.0	1,601,630	84.1	78.5	88.5
25-34	23,329	81.0	72.5	87.3	1,900,064	73.1	67.1	78.4
35-44	24,720	73.2	65.4	79.8	1,722,858	71.5	63.8	78.1
45-64	66,141	74.0	69.8	77.8	3,443,881	70.8	67.5	73.8
65+	30,956	63.7	59.1	68.0	1,840,519	69.5	66.1	72.7
<b>Race</b>								
White, NH	154,352	74.3	71.5	76.9	6,662,678	75.8	74.0	77.4
Black, NH		#			1,525,317	73.8	66.8	79.7
Hispanic		#			1,507,430	62.4	55.4	68.9
Other, NH	9,362	71.3 <sup>^</sup>	54.5	83.7	985,735	70.6 <sup>^</sup>	56.9	81.3
<b>Sex</b>								
Male	93,092	75.9	71.2	80.0	5,439,883	77.3	74.6	79.8
Female	82,406	71.5	67.7	75.0	5,241,278	68.6	65.3	71.7
<b>Age-adjusted<sup>&amp;</sup></b>		74.4	71.3	77.2		72.9	70.5	75.1

\* Any physical activities or exercises such as running or walking  
 & Percent is age adjusted to the 2000 United States Population.  
 # Rates with <10 in the numerator or <50 in the denominator are suppressed.  
 ^ Highly variable rate (confidence interval with a half-width greater than 10).

# North Country

## Prevent Chronic Diseases

Percentage of adults who consume one or more sugary drinks daily\*



	North Country				Statewide			
	Est. # of Adults	Percent	Lower 95% limit	Upper 95% limit	Est. # of Adults	Percent	Lower 95% limit	Upper 95% limit
<b>Total</b>	67,716	29.1	25.7	32.7	3,402,766	23.8	21.5	26.3
<b>Age</b>								
18-24	20,919	59.4 <sup>^</sup>	45.8	71.7	670,630	36.9	28.0	46.7
25-34	11,575	40.6 <sup>^</sup>	31.2	50.8	733,289	28.9	22.5	36.4
35-44	9,048	27.6	21.3	34.9	769,136	32.4	25.4	40.3
45-64	16,825	19.2	15.8	23.1	839,390	17.6	15.0	20.5
65+	9,134	19.3	15.4	23.8	348,734	13.7	11.1	16.9
<b>Race</b>								
White, NH	57,041	28.0	24.7	31.6	1,754,487	20.4	18.3	22.8
Black, NH		#			671,592	33.6	25.4	43.0
Hispanic		#			700,337	29.8	23.7	36.8
Other, NH	2,928	23.8 <sup>^</sup>	13.4	38.7	276,350	20.4 <sup>^</sup>	10.6	35.5
<b>Sex</b>								
Male	46,475	38.9	33.5	44.5	1,782,648	26.0	22.5	29.8
Female	21,240	18.8	15.5	22.5	1,620,118	21.8	18.7	25.3
<b>Age-adjusted<sup>&amp;</sup></b>		30.1	27.1	33.4		24.7	22.2	27.4

\* Sugary drinks include regular soda, and sugar-sweetened drinks.

& Percent is age adjusted to the 2000 United States Population.

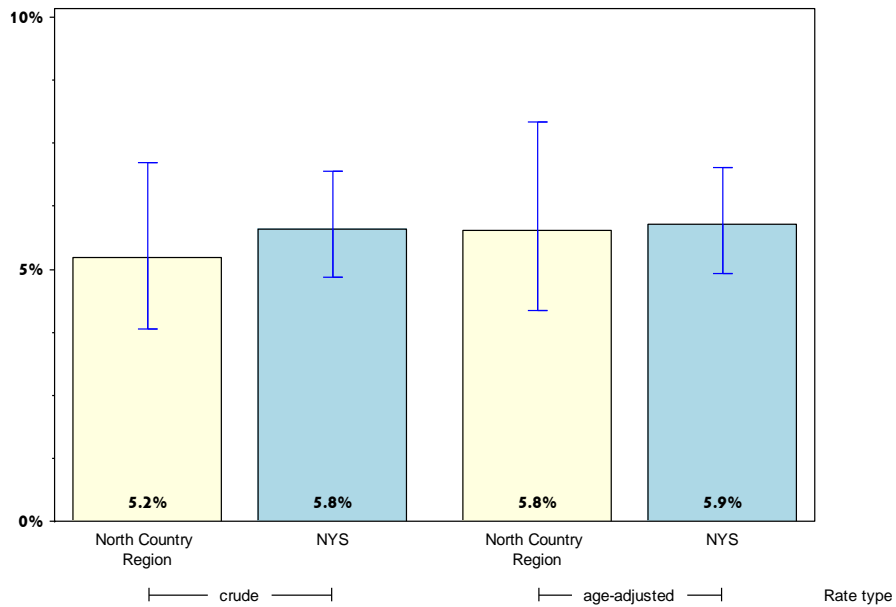
# Rates with <10 in the numerator or <50 in the denominator are suppressed.

<sup>^</sup> Highly variable rate (confidence interval with a half-width greater than 10).

# North Country

## Prevent Chronic Diseases

Percentage of adults who consume fast-food three or more times per week



	North Country				Statewide			
	Est. # of Adults	Percent	Lower 95% limit	Upper 95% limit	Est. # of Adults	Percent	Lower 95% limit	Upper 95% limit
<b>Total</b>	12,105	5.2	3.8	7.1	817,815	5.8	4.8	6.9
<b>Age</b>								
18-24	3,395	9.7	4.7	18.8	172,464	9.7	6.9	13.6
25-34	3,148	11.1 <sup>^</sup>	5.5	21.2	252,437	10.0	6.9	14.2
35-44	1,831	5.6	3.2	9.5	106,397	4.5	3.2	6.3
45-64	3,150	3.6	2.1	6.0	234,582	5.0	3.3	7.4
65+	561	1.2	0.6	2.3	47,255	1.9	1.3	2.7
<b>Race</b>								
White, NH	9,640	4.8	3.4	6.6	433,016	5.1	4.4	5.9
Black, NH		#			122,943	6.2	4.1	9.3
Hispanic		#			219,779	9.6	5.6	16.0
Other, NH		#			42,077	3.2	1.8	5.5
<b>Sex</b>								
Male	9,610	8.1	5.5	11.6	560,514	8.2	6.6	10.3
Female	2,495	2.2	1.5	3.4	257,301	3.5	2.6	4.8
<b>Age-adjusted<sup>&amp;</sup></b>		5.8	4.2	7.9		5.9	4.9	7.0

& Percent is age adjusted to the 2000 United States Population.

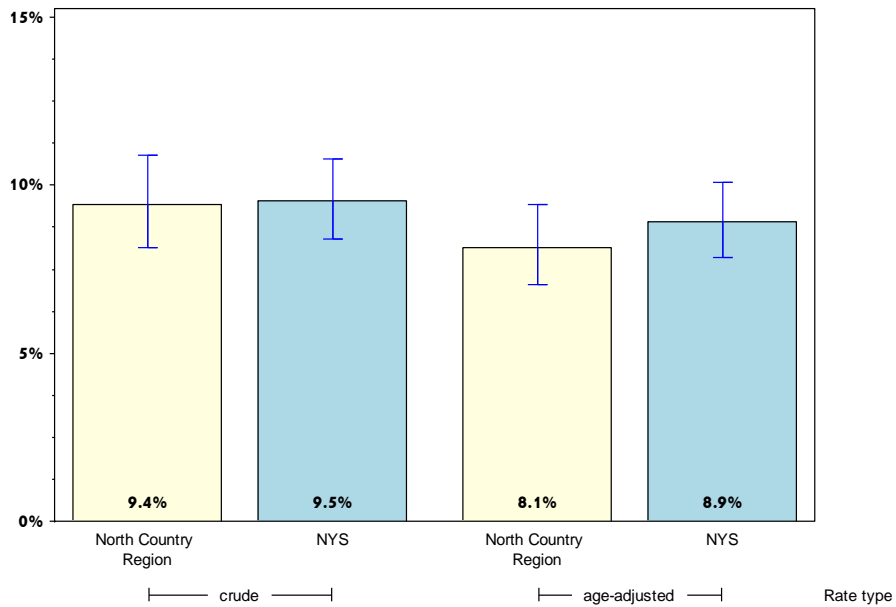
# Rates with <10 in the numerator or <50 in the denominator are suppressed.

<sup>^</sup> Highly variable rate (confidence interval with a half-width greater than 10).

# North Country

## Prevent Chronic Diseases

Percentage of adults with physician-diagnosed diabetes\*



	North Country				Statewide			
	Est. # of Adults	Percent	Lower 95% limit	Upper 95% limit	Est. # of Adults	Percent	Lower 95% limit	Upper 95% limit
<b>Total</b>	23,236	9.4	8.1	10.9	1,456,783	9.5	8.4	10.8
<b>Age</b>								
18-24	#				8,338	0.4	0.2	0.8
25-34	#				58,319	2.1	0.8	5.5
35-44	1,072	3.1	1.6	6.0	111,205	4.5	2.5	7.7
45-64	10,661	11.5	9.1	14.3	714,501	14.2	11.9	16.9
65+	10,593	21.1	17.7	24.9	525,500	19.1	16.3	22.2
<b>Race</b>								
White, NH	19,762	9.2	7.9	10.7	781,028	8.6	7.6	9.6
Black, NH	#				250,921	11.6	8.2	16.2
Hispanic	#				296,635	11.6	7.7	17.0
Other, NH	1,930	13.4 <sup>^</sup>	7.1	24.0	128,200	8.9	5.4	14.4
<b>Sex</b>								
Male	12,352	9.7	7.8	12.1	795,054	10.9	9.0	13.1
Female	10,884	9.1	7.5	11.0	661,729	8.3	7.0	9.7
<b>Age-adjusted<sup>&amp;</sup></b>		8.1	7.0	9.4		8.9	7.9	10.1

\* As diagnosed by a health professional.

& Percent is age adjusted to the 2000 United States Population.

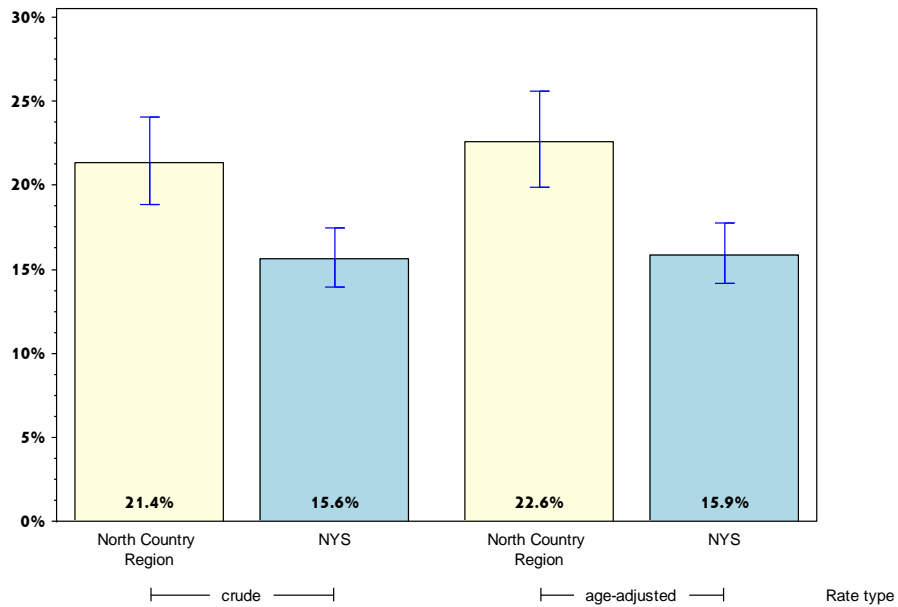
# Rates with <10 in the numerator or <50 in the denominator are suppressed.

<sup>^</sup> Highly variable rate (confidence interval with a half-width greater than 10).

# North Country

## Prevent Chronic Diseases

### Percentage of adults who are current smokers



	North Country				Statewide			
	Est. # of Adults	Percent	Lower 95% limit	Upper 95% limit	Est. # of Adults	Percent	Lower 95% limit	Upper 95% limit
<b>Total</b>	51,412	21.4	18.9	24.1	2,311,528	15.6	14.0	17.4
<b>Age</b>								
18-24	7,759	21.1 <sup>^</sup>	13.3	31.8	254,033	13.0	9.8	17.0
25-34	9,359	32.0 <sup>^</sup>	23.4	42.1	524,783	19.7	14.3	26.7
35-44	8,623	25.2	19.0	32.6	427,187	17.6	13.3	23.0
45-64	21,472	23.7	20.0	27.8	937,977	19.2	16.7	22.1
65+	4,028	8.3	6.3	10.8	149,820	5.7	4.7	6.8
<b>Race</b>								
White, NH	44,514	21.2	18.6	24.0	1,598,923	18.1	16.0	20.3
Black, NH		#			314,837	15.0	10.0	21.7
Hispanic		#			303,908	12.4	8.8	17.1
Other, NH	2,652	20.3 <sup>^</sup>	11.5	33.2	93,860	6.7	4.3	10.3
<b>Sex</b>								
Male	24,983	20.1	16.4	24.4	1,331,531	18.8	15.9	22.1
Female	26,429	22.7	19.5	26.2	979,997	12.7	11.1	14.4
<b>Age-adjusted<sup>&amp;</sup></b>		22.6	19.9	25.6		15.9	14.1	17.7

& Percent is age adjusted to the 2000 United States Population.

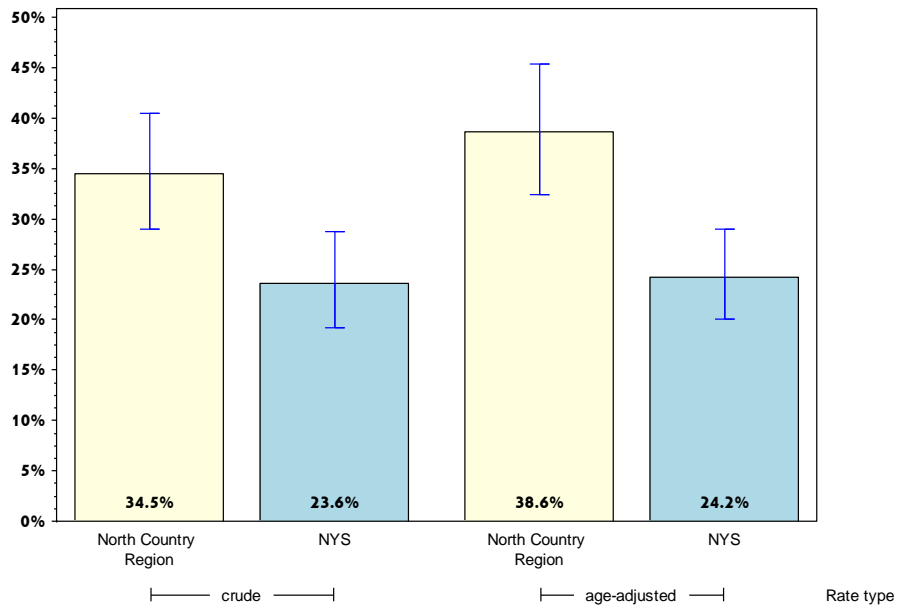
# Rates with <10 in the numerator or <50 in the denominator are suppressed.

<sup>^</sup> Highly variable rate (confidence interval with a half-width greater than 10).

# North Country

## Prevent Chronic Diseases

Percentage of adults with annual household income less than \$25,000 who are current smokers



	North Country				Statewide			
	Est. # of Adults	Percent	Lower 95% limit	Upper 95% limit	Est. # of Adults	Percent	Lower 95% limit	Upper 95% limit
<b>Total</b>	20,863	34.5	29.0	40.4	910,061	23.6	19.2	28.7
<b>Age</b>								
18-24	#	#			84,893	16.1	9.8	25.4
25-34	3,373	38.1 <sup>^</sup>	21.7	57.9	254,993	32.7 <sup>^</sup>	18.8	50.6
35-44	#	#			141,275	24.5 <sup>^</sup>	15.5	36.5
45-64	9,634	49.1	40.4	57.7	354,621	31.5	24.7	39.1
65+	1,911	11.7	7.6	17.5	63,044	7.9	5.6	11.0
<b>Race</b>								
White, NH	16,783	32.6	26.9	38.8	562,213	32.6	25.7	40.3
Black, NH	#	#			187,054	28.1 <sup>^</sup>	17.8	41.4
Hispanic	#	#			119,918	11.3	7.1	17.6
Other, NH	#	#			40,876	10.0	5.0	19.2
<b>Sex</b>								
Male	7,341	28.5	20.3	38.4	507,987	30.0	21.9	39.5
Female	13,522	38.9	32.1	46.2	402,073	18.6	14.7	23.3
<b>Age-adjusted<sup>&amp;</sup></b>		38.6	32.3	45.3		24.2	20.0	28.9

& Percent is age adjusted to the 2000 United States Population.

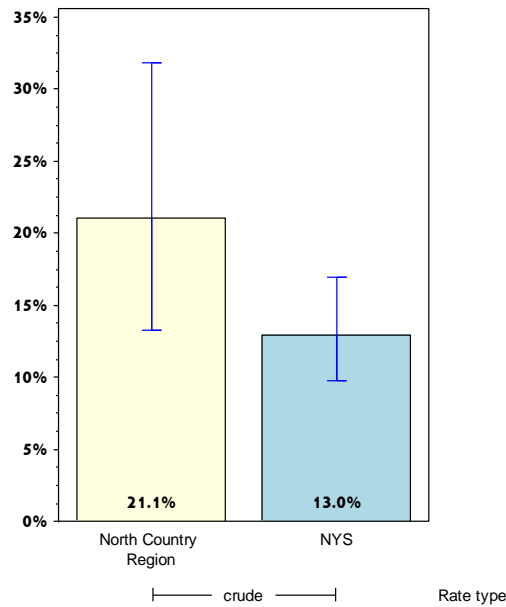
# Rates with <10 in the numerator or <50 in the denominator are suppressed.

<sup>^</sup> Highly variable rate (confidence interval with a half-width greater than 10).

# North Country

## Prevent Chronic Diseases

Percentage of adults aged 18-24 years who are current smokers



	North Country				Statewide			
	Est. # of Adults	Percent	Lower 95% limit	Upper 95% limit	Est. # of Adults	Percent	Lower 95% limit	Upper 95% limit
<b>Total</b>	7,759	21.1 <sup>^</sup>	13.3	31.8	254,033	13.0	9.8	17.0
<b>Age<sup>+</sup></b>								
18-24								
25-34								
35-44								
45-64								
65+								
<b>Race</b>								
White, NH	6,162	20.5 <sup>^</sup>	12.3	32.3	188,030	19.4	14.8	25.2
Black, NH		#			21,086	6.1	2.8	13.1
Hispanic		#			33,121	9.8 <sup>^</sup>	4.6	19.9
Other, NH		#			11,797	3.8	1.4	10.0
<b>Sex</b>								
Male	6,217	26.2 <sup>^</sup>	14.8	42.1	153,298	15.5	10.7	21.8
Female	1,542	11.8 <sup>^</sup>	5.8	22.4	100,736	10.4	6.6	16.0
<b>Age-adjusted<sup>+,&amp;</sup></b>								

& Percent is age adjusted to the 2000 United States Population.

+ Age-adjusted and age specific percent not generated for health indicators with age range limits.

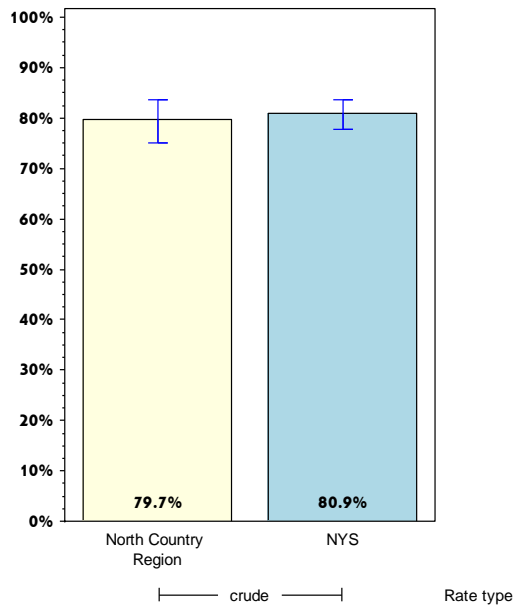
# Rates with <10 in the numerator or <50 in the denominator are suppressed.

<sup>^</sup> Highly variable rate (confidence interval with a half-width greater than 10).

# North Country

## Prevent Chronic Diseases

Percentage of women aged 50-74 years receiving breast cancer screening based on recent guidelines\*



	North Country				Statewide			
	Est. # of Adults	Percent	Lower 95% limit	Upper 95% limit	Est. # of Adults	Percent	Lower 95% limit	Upper 95% limit
<b>Total</b>	36,651	79.7	75.1	83.6	2,225,651	80.9	77.7	83.7
<b>Age<sup>+</sup></b>								
18-24								
25-34								
35-44								
45-64								
65+								
<b>Race</b>								
White, NH	32,120	79.1	74.5	83.0	1,417,374	79.0	75.9	81.8
Black, NH		#			347,690	87.0 <sup>^</sup>	73.4	94.3
Hispanic		#			309,667	83.8 <sup>^</sup>	70.9	91.6
Other, NH		#			150,920	79.7 <sup>^</sup>	61.2	90.7
<b>Sex</b>								
Male		#				#		
Female	36,651	79.7	75.1	83.6	2,225,651	80.9	77.7	83.7
<b>Age-adjusted<sup>+,&amp;</sup></b>								

\* Mammogram within past 2 years.

& Percent is age adjusted to the 2000 United States Population.

+ Age-adjusted and age specific percent not generated for health indicators with age range limits.

# Rates with <10 in the numerator or <50 in the denominator are suppressed.

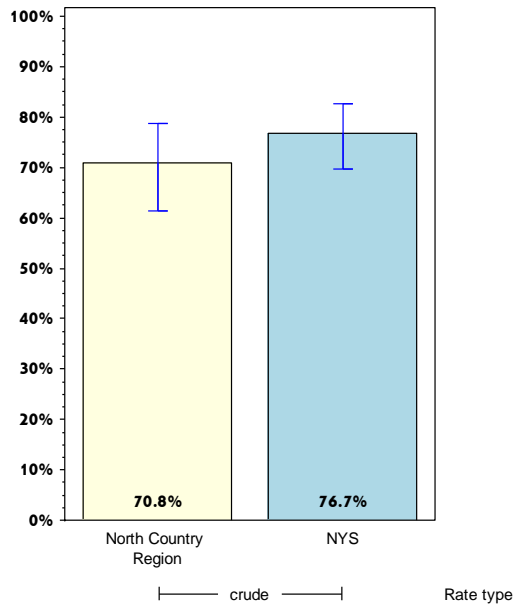
<sup>^</sup> Highly variable rate (confidence interval with a half-width greater than 10).



# North Country

## Prevent Chronic Diseases

Percentage of women aged 50-74 years with annual household income of less than \$25,000 receiving breast cancer screening based on recent guidelines\*



	North Country				Statewide			
	Est. # of Adults	Percent	Lower 95% limit	Upper 95% limit	Est. # of Adults	Percent	Lower 95% limit	Upper 95% limit
<b>Total</b>	10,027	70.8	61.5	78.6	554,880	76.7	69.6	82.6
<b>Age<sup>+</sup></b>								
18-24								
25-34								
35-44								
45-64								
65+								
<b>Race</b>								
White, NH	8,429	71.3	61.5	79.5	232,138	66.5	57.9	74.1
Black, NH	#	#	#	#	139,053	95.4	89.6	98.1
Hispanic	#	#	#	#	134,524	82.0 <sup>^</sup>	61.8	92.7
Other, NH	#	#	#	#	49,165	76.3 <sup>^</sup>	44.1	93.0
<b>Sex</b>								
Male	#	#	#	#	#	#	#	#
Female	10,027	70.8	61.5	78.6	554,880	76.7	69.6	82.6
<b>Age-adjusted<sup>+,&amp;</sup></b>								

\* Mammogram within past 2 years.

& Percent is age adjusted to the 2000 United States Population.

+ Age-adjusted and age specific percent not generated for health indicators with age range limits.

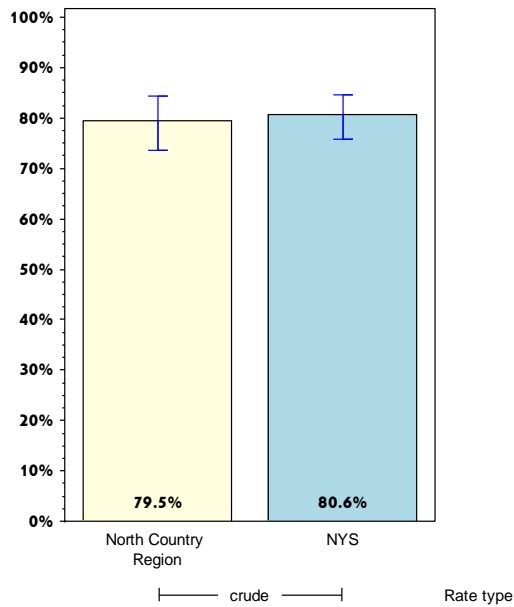
# Rates with <10 in the numerator or <50 in the denominator are suppressed.

<sup>^</sup> Highly variable rate (confidence interval with a half-width greater than 10).

# North Country

## Prevent Chronic Diseases

Percentage of women aged 21-65 years receiving cervical cancer screening based on recent guidelines\*



	North Country				Statewide			
	Est. # of Adults	Percent	Lower 95% limit	Upper 95% limit	Est. # of Adults	Percent	Lower 95% limit	Upper 95% limit
<b>Total</b>	66,440	79.5	73.7	84.3	4,362,995	80.6	75.7	84.7
<b>Age<sup>+</sup></b>								
18-24								
25-34								
35-44								
45-64								
65+								
<b>Race</b>								
White, NH	60,761	83.0	78.4	86.7	2,640,598	84.5	82.2	86.6
Black, NH		#			711,417	84.5 <sup>^</sup>	72.6	91.8
Hispanic		#			684,308	78.0 <sup>^</sup>	66.2	86.6
Other, NH		#			326,671	57.1 <sup>^</sup>	31.0	79.8
<b>Sex</b>								
Male		#				#		
Female	66,440	79.5	73.7	84.3	4,362,995	80.6	75.7	84.7
<b>Age-adjusted<sup>+,&amp;</sup></b>								

\* Pap test within past 3 years.

& Percent is age adjusted to the 2000 United States Population.

+ Age-adjusted and age specific percent not generated for health indicators with age range limits.

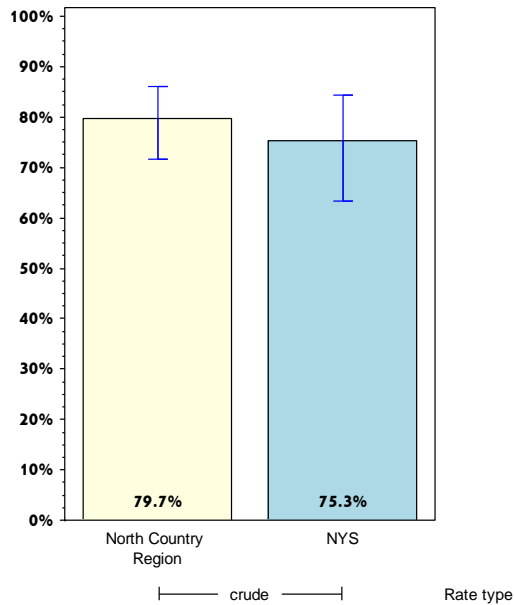
# Rates with <10 in the numerator or <50 in the denominator are suppressed.

<sup>^</sup> Highly variable rate (confidence interval with a half-width greater than 10).

# North Country

## Prevent Chronic Diseases

Percentage of women aged 21-65 years with annual household income of less than \$25,000 receiving cervical cancer screening based on recent guidelines\*



	North Country				Statewide			
	Est. # of Adults	Percent	Lower 95% limit	Upper 95% limit	Est. # of Adults	Percent	Lower 95% limit	Upper 95% limit
<b>Total</b>	18,029	79.7	71.7	85.9	1,068,153	75.3 <sup>^</sup>	63.2	84.4
<b>Age<sup>+</sup></b>								
18-24								
25-34								
35-44								
45-64								
65+								
<b>Race</b>								
White, NH	15,460	79.3	70.4	86.1	433,489	74.8	68.6	80.2
Black, NH	#	#	#	#	283,693	93.7	87.8	96.8
Hispanic	#	#	#	#	292,551	77.4 <sup>^</sup>	61.6	88.0
Other, NH	#	#	#	#	58,419	36.7 <sup>^</sup>	8.5	78.5
<b>Sex</b>								
Male	#	#	#	#	#	#	#	#
Female	18,029	79.7	71.7	85.9	1,068,153	75.3 <sup>^</sup>	63.2	84.4
<b>Age-adjusted<sup>+,&amp;</sup></b>								

\* Pap test within past 3 years.

& Percent is age adjusted to the 2000 United States Population.

+ Age-adjusted and age specific percent not generated for health indicators with age range limits.

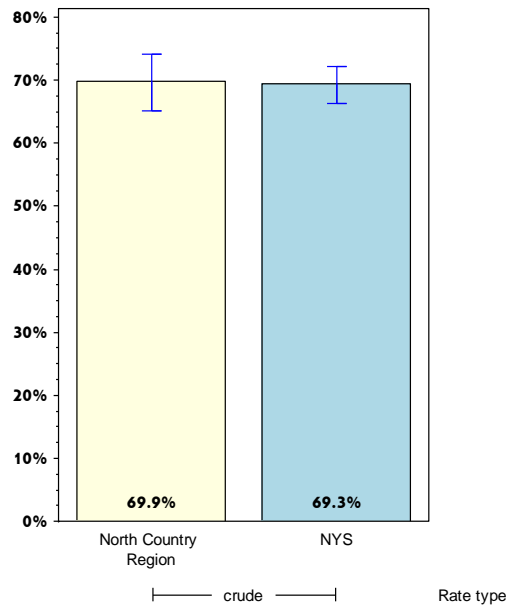
# Rates with <10 in the numerator or <50 in the denominator are suppressed.

<sup>^</sup> Highly variable rate (confidence interval with a half-width greater than 10).

# North Country

## Prevent Chronic Diseases

Percentage of adults aged 50-75 years receiving colorectal cancer screening based on recent guidelines\*



	North Country				Statewide			
	Est. # of Adults	Percent	Lower 95% limit	Upper 95% limit	Est. # of Adults	Percent	Lower 95% limit	Upper 95% limit
<b>Total</b>	66,203	69.9	65.1	74.2	3,471,945	69.3	66.3	72.2
<b>Age<sup>+</sup></b>								
18-24								
25-34								
35-44								
45-64								
65+								
<b>Race</b>								
White, NH	58,021	71.0	67.4	74.3	2,335,990	70.4	67.9	72.7
Black, NH		#			514,345	69.6 <sup>^</sup>	57.5	79.4
Hispanic		#			416,087	70.6 <sup>^</sup>	58.4	80.4
Other, NH		#			205,524	57.4 <sup>^</sup>	39.9	73.2
<b>Sex</b>								
Male	33,025	67.6	59.7	74.6	1,545,645	66.8	62.1	71.2
Female	33,179	72.3	67.4	76.7	1,926,301	71.5	67.5	75.2
<b>Age-adjusted<sup>+,&amp;</sup></b>								

\* Blood stool test within 1 year, or sigmoidoscopy within 5 years with blood stool test within 3 years, or colonoscopy within 10 years.

& Percent is age adjusted to the 2000 United States Population.

+ Age-adjusted and age specific percent not generated for health indicators with age range limits.

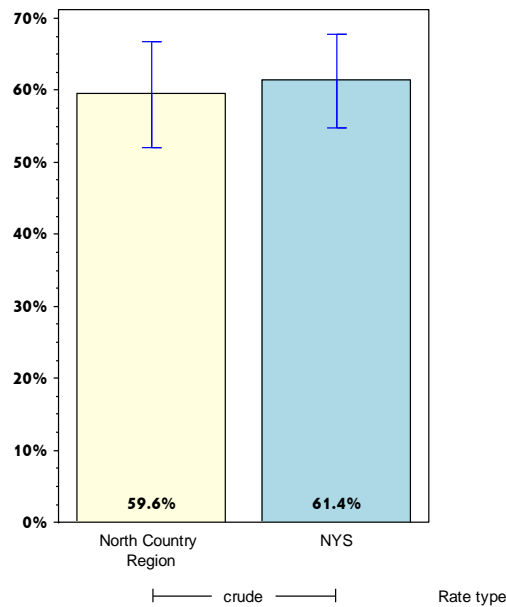
# Rates with <10 in the numerator or <50 in the denominator are suppressed.

<sup>^</sup> Highly variable rate (confidence interval with a half-width greater than 10).

## North Country

### Prevent Chronic Diseases

Percentage of adults aged 50-75 years with annual household income less than \$25,000 receiving colorectal cancer screening based on recent guidelines\*



	North Country				Statewide			
	Est. # of Adults	Percent	Lower 95% limit	Upper 95% limit	Est. # of Adults	Percent	Lower 95% limit	Upper 95% limit
<b>Total</b>	14,192	59.6	52.1	66.8	736,005	61.4	54.7	67.7
<b>Age<sup>+</sup></b>								
18-24								
25-34								
35-44								
45-64								
65+								
<b>Race</b>								
White, NH	12,204	59.4	51.4	66.9	345,064	57.6	51.4	63.7
Black, NH	#	#	#	#	155,775	60.0 <sup>^</sup>	38.7	78.0
Hispanic	#	#	#	#	187,721	75.1 <sup>^</sup>	60.9	85.4
Other, NH	#	#	#	#	47,444	52.8 <sup>^</sup>	29.9	74.5
<b>Sex</b>								
Male	5,411	54.2 <sup>^</sup>	42.0	66.0	253,900	51.4 <sup>^</sup>	41.0	61.6
Female	8,781	63.5	54.3	71.8	482,104	68.5	60.2	75.7
<b>Age-adjusted<sup>+,&amp;</sup></b>								

\* Blood stool test within 1 year, or sigmoidoscopy within 5 years with blood stool test within 3 years, or colonoscopy within 10 years.

& Percent is age adjusted to the 2000 United States Population.

+ Age-adjusted and age specific percent not generated for health indicators with age range limits.

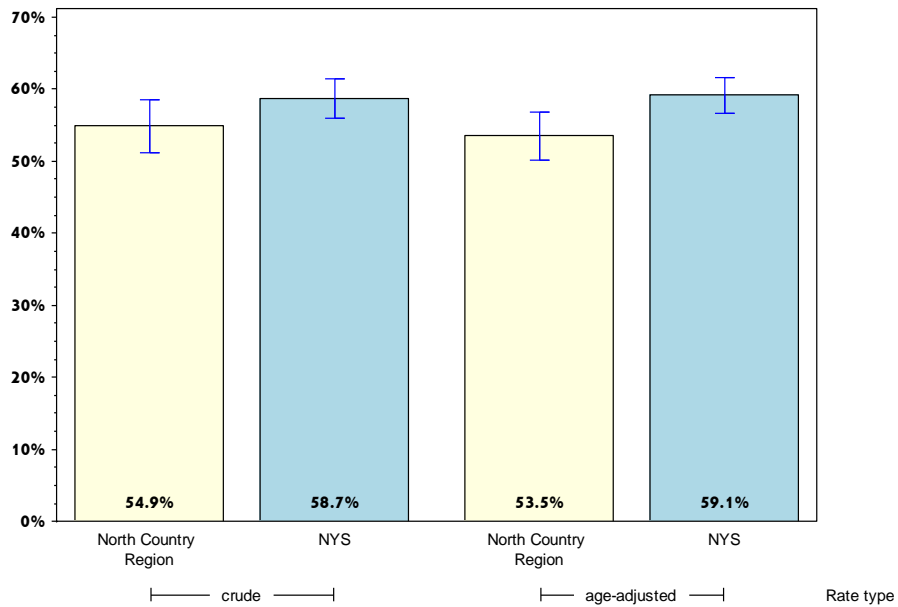
# Rates with <10 in the numerator or <50 in the denominator are suppressed.

<sup>^</sup> Highly variable rate (confidence interval with a half-width greater than 10).

# North Country

## Prevent Chronic Diseases

Percentage of adults who had a test for high blood sugar or diabetes within the past three years



	North Country				Statewide			
	Est. # of Adults	Percent	Lower 95% limit	Upper 95% limit	Est. # of Adults	Percent	Lower 95% limit	Upper 95% limit
<b>Total</b>	118,562	54.9	51.1	58.6	7,849,939	58.7	56.0	61.5
<b>Age</b>								
18-24	9,729	28.2 <sup>^</sup>	18.2	40.9	503,420	26.8	20.2	34.6
25-34	12,071	41.2	32.2	50.9	1,337,915	51.0	44.1	57.9
35-44	15,058	45.5	37.6	53.7	1,475,455	63.3	56.2	69.9
45-64	53,957	67.5	62.4	72.3	2,822,324	68.0	64.3	71.4
65+	27,414	71.5	66.8	75.8	1,541,702	71.4	66.8	75.6
<b>Race</b>								
White, NH	106,468	56.6	52.9	60.1	4,823,563	61.0	58.6	63.4
Black, NH		#			1,240,630	65.1	55.4	73.7
Hispanic		#			1,203,330	53.5	46.1	60.8
Other, NH	4,889	40.8 <sup>^</sup>	22.0	62.7	582,416	44.7 <sup>^</sup>	31.9	58.2
<b>Sex</b>								
Male	56,518	50.9	45.3	56.6	3,534,063	56.3	52.1	60.4
Female	62,044	59.0	54.4	63.5	4,315,875	60.9	57.2	64.5
<b>Age-adjusted<sup>&amp;</sup></b>		53.5	50.2	56.8		59.1	56.6	61.6

& Percent is age adjusted to the 2000 United States Population.

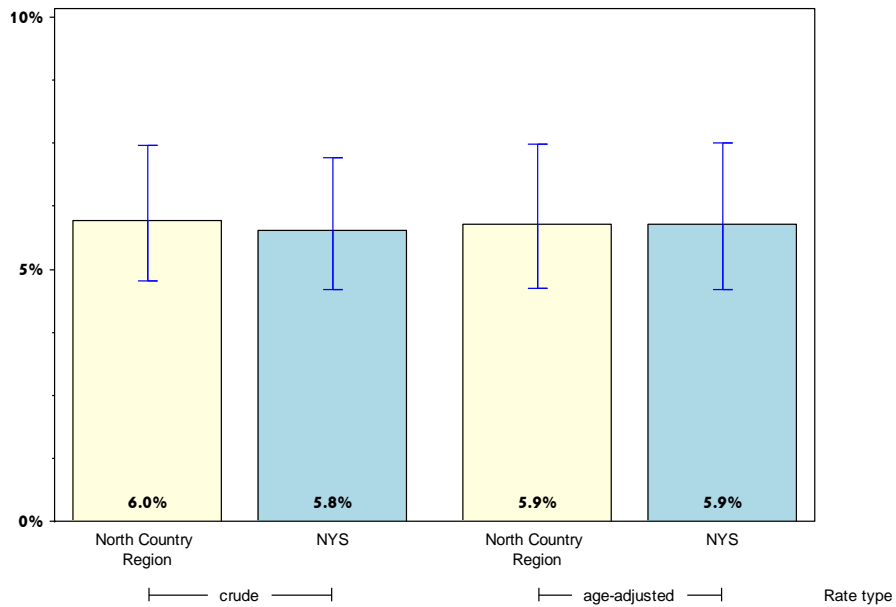
# Rates with <10 in the numerator or <50 in the denominator are suppressed.

<sup>^</sup> Highly variable rate (confidence interval with a half-width greater than 10).

# North Country

## Prevent Chronic Diseases

### Percentage of adults with physician-diagnosed prediabetes



	North Country				Statewide			
	Est. # of Adults	Percent	Lower 95% limit	Upper 95% limit	Est. # of Adults	Percent	Lower 95% limit	Upper 95% limit
<b>Total</b>	13,102	6.0	4.8	7.5	783,799	5.8	4.6	7.2
<b>Age</b>								
18-24	#				57,540	2.9	0.7	10.7
25-34	#				43,246	1.6	1.0	2.7
35-44	#				198,127	8.5	4.4	16.0
45-64	5,532	6.9	5.1	9.2	283,693	6.7	5.3	8.5
65+	4,811	12.5	8.9	17.3	171,261	7.8	6.2	9.9
<b>Race</b>								
White, NH	12,050	6.3	5.0	7.9	489,253	6.0	4.8	7.4
Black, NH	#				96,242	5.2	2.9	9.2
Hispanic	#				81,294	3.6	1.8	7.2
Other, NH	#				117,011	8.9 <sup>^</sup>	3.2	22.3
<b>Sex</b>								
Male	6,408	5.7	4.1	7.8	377,968	5.9	4.1	8.5
Female	6,695	6.3	4.6	8.6	405,832	5.6	4.3	7.3
<b>Age-adjusted<sup>&amp;</sup></b>		5.9	4.6	7.5		5.9	4.6	7.5

& Percent is age adjusted to the 2000 United States Population.

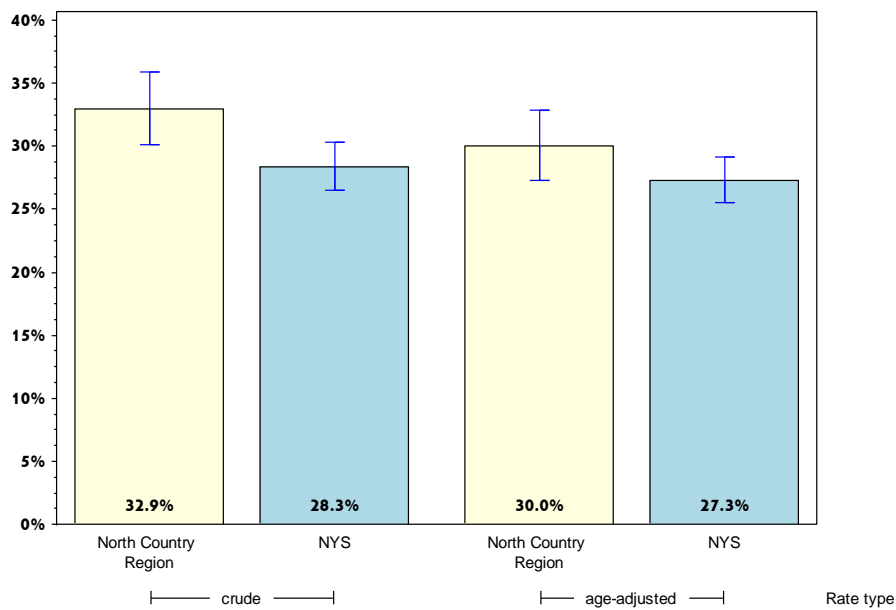
# Rates with <10 in the numerator or <50 in the denominator are suppressed.

<sup>^</sup> Highly variable rate (confidence interval with a half-width greater than 10).

# North Country

## Prevent Chronic Diseases

Percentage of adults with physician-diagnosed high blood pressure



	North Country				Statewide			
	Est. # of Adults	Percent	Lower 95% limit	Upper 95% limit	Est. # of Adults	Percent	Lower 95% limit	Upper 95% limit
<b>Total</b>	80,985	32.9	30.1	35.9	4,323,615	28.3	26.5	30.3
<b>Age</b>								
18-24	#				103,520	5.2	3.3	8.0
25-34	5,394	17.8 <sup>^</sup>	10.0	29.7	299,126	10.9	7.8	15.0
35-44	6,113	17.6	12.8	23.6	470,752	18.9	14.1	24.8
45-64	35,673	38.5	34.1	43.1	1,715,223	34.1	31.2	37.2
65+	31,079	62.1	57.8	66.2	1,654,516	60.4	56.5	64.2
<b>Race</b>								
White, NH	71,982	33.6	30.8	36.6	2,701,979	29.7	28.0	31.4
Black, NH	#				740,669	34.2	27.2	42.0
Hispanic	#				609,542	23.8	18.7	29.9
Other, NH	4,627	32.1 <sup>^</sup>	19.7	47.7	271,424	18.9	12.7	27.1
<b>Sex</b>								
Male	44,134	34.7	30.4	39.3	2,116,294	29.0	26.2	32.1
Female	36,851	31.0	27.6	34.7	2,207,320	27.7	25.3	30.2
<b>Age-adjusted<sup>&amp;</sup></b>		30.0	27.3	32.8		27.3	25.6	29.1

& Percent is age adjusted to the 2000 United States Population.

# Rates with <10 in the numerator or <50 in the denominator are suppressed.

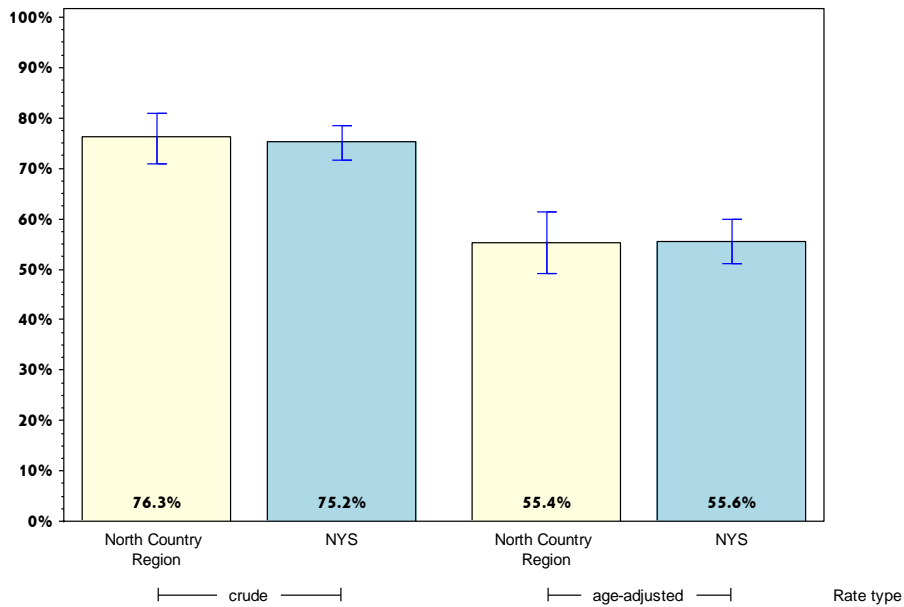
<sup>^</sup> Highly variable rate (confidence interval with a half-width greater than 10).



# North Country

## Prevent Chronic Diseases

Percentage of adults with diagnosed high blood pressure taking high blood pressure medication



	North Country				Statewide			
	Est. # of Adults	Percent	Lower 95% limit	Upper 95% limit	Est. # of Adults	Percent	Lower 95% limit	Upper 95% limit
<b>Total</b>	61,682	76.3	70.9	81.0	3,243,246	75.2	71.5	78.5
<b>Age</b>								
18-24	#				8,688	8.4	3.9	17.4
25-34	#				96,762	32.4 <sup>^</sup>	18.9	49.5
35-44	3,142	51.4 <sup>^</sup>	35.3	67.2	186,971	39.7 <sup>^</sup>	26.7	54.3
45-64	27,315	76.6	70.0	82.0	1,395,152	81.6	77.8	84.9
65+	29,298	94.4	91.1	96.6	1,497,501	90.8	86.9	93.6
<b>Race</b>								
White, NH	55,009	76.6	70.8	81.5	2,081,796	77.4	74.1	80.3
Black, NH	#				552,688	74.6 <sup>^</sup>	60.0	85.3
Hispanic	#				420,934	69.1 <sup>^</sup>	56.3	79.5
Other, NH	#				187,828	69.2 <sup>^</sup>	50.8	83.0
<b>Sex</b>								
Male	31,730	72.1	64.0	78.9	1,525,386	72.2	66.5	77.2
Female	29,952	81.4	74.2	87.0	1,717,859	78.1	73.2	82.4
<b>Age-adjusted<sup>&amp;</sup></b>		55.4	49.2	61.3		55.6	51.1	60.0

& Percent is age adjusted to the 2000 United States Population.

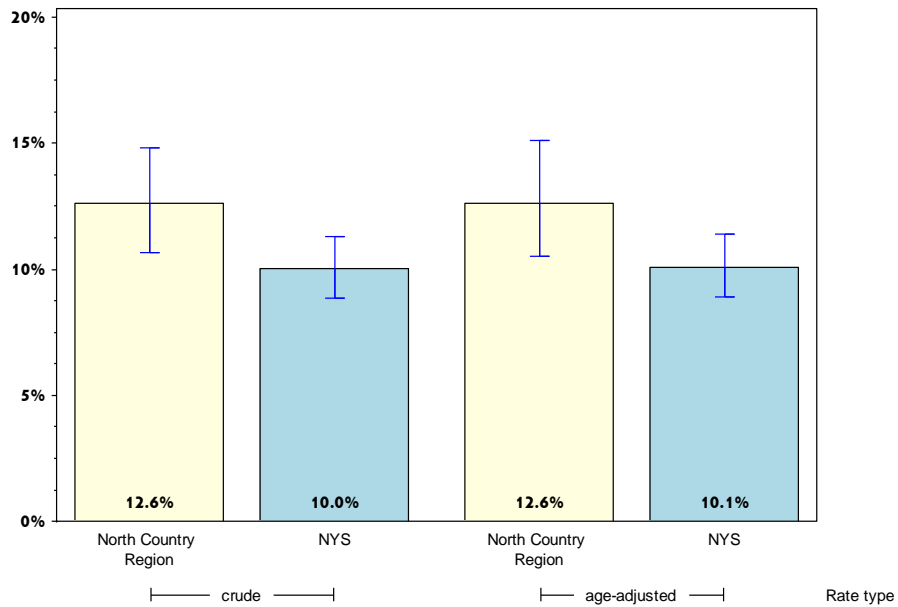
# Rates with <10 in the numerator or <50 in the denominator are suppressed.

<sup>^</sup> Highly variable rate (confidence interval with a half-width greater than 10).

# North Country

## Prevent Chronic Diseases

### Percentage of adults with current asthma\*



	North Country				Statewide			
	Est. # of Adults	Percent	Lower 95% limit	Upper 95% limit	Est. # of Adults	Percent	Lower 95% limit	Upper 95% limit
<b>Total</b>	30,846	12.6	10.7	14.8	1,520,940	10.0	8.9	11.3
<b>Age</b>								
18-24	4,764	12.9 <sup>^</sup>	6.8	23.2	170,340	8.6	6.2	11.8
25-34	3,671	12.1 <sup>^</sup>	6.2	22.3	322,447	11.7	8.2	16.4
35-44	4,602	13.3	9.0	19.1	240,590	9.7	7.1	13.0
45-64	11,755	12.8	10.2	15.9	551,257	11.1	9.3	13.3
65+	5,923	11.8	9.3	14.9	222,952	8.1	6.5	10.1
<b>Race</b>								
White, NH	28,154	13.2	11.1	15.6	946,198	10.4	9.1	11.9
Black, NH	#	#			199,011	9.2	6.5	12.9
Hispanic	#	#			283,809	11.3	7.9	16.0
Other, NH	1,056	7.3	3.4	15.0	91,921	6.4	4.0	10.0
<b>Sex</b>								
Male	11,063	8.7	6.6	11.5	504,039	7.0	5.6	8.6
Female	19,783	16.7	13.7	20.3	1,016,901	12.8	11.1	14.8
<b>Age-adjusted<sup>&amp;</sup></b>		12.6	10.5	15.1		10.1	8.9	11.4

\* Physician diagnosed asthma.

& Percent is age adjusted to the 2000 United States Population.

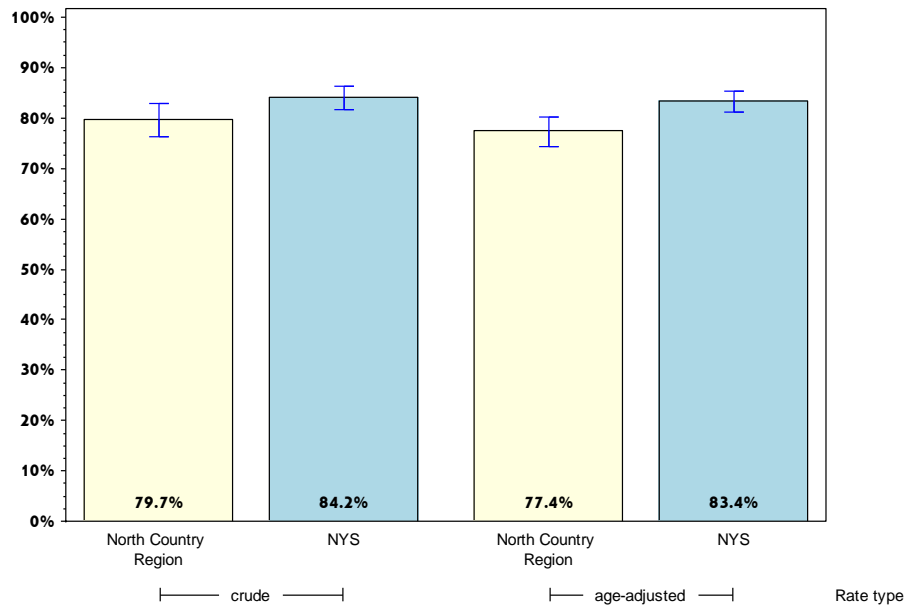
# Rates with <10 in the numerator or <50 in the denominator are suppressed.

<sup>^</sup> Highly variable rate (confidence interval with a half-width greater than 10).

# North Country

## Prevent Chronic Diseases

Percent of adults with cholesterol checked\*



	North Country				Statewide			
	Est. # of Adults	Percent	Lower 95% limit	Upper 95% limit	Est. # of Adults	Percent	Lower 95% limit	Upper 95% limit
<b>Total</b>	192,776	79.7	76.2	82.9	12,572,076	84.2	81.7	86.3
<b>Age</b>								
18-24	12,967	36.8 <sup>^</sup>	24.9	50.5	891,216	49.0	39.4	58.6
25-34	17,273	58.8	48.9	68.1	1,896,541	71.3	63.9	77.7
35-44	27,030	79.4	71.6	85.4	2,197,539	88.9	85.0	91.8
45-64	86,788	94.0	91.3	95.8	4,694,424	93.8	91.2	95.6
65+	47,750	96.4	94.9	97.6	2,641,873	97.2	95.8	98.2
<b>Race</b>								
White, NH	169,614	80.8	77.4	83.9	7,746,530	87.0	84.7	89.0
Black, NH		#			1,730,762	81.9	73.0	88.3
Hispanic		#			1,923,116	77.3	70.1	83.1
Other, NH	10,761	74.8 <sup>^</sup>	56.0	87.4	1,171,667	81.9 <sup>^</sup>	67.3	90.8
<b>Sex</b>								
Male	94,035	75.4	69.5	80.4	5,864,748	82.0	78.2	85.2
Female	98,741	84.4	80.6	87.6	6,707,327	86.2	82.9	88.9
<b>Age-adjusted<sup>&amp;</sup></b>		77.4	74.3	80.2		83.4	81.2	85.4

\* As diagnosed by a health professional.

& Percent is age adjusted to the 2000 United States Population.

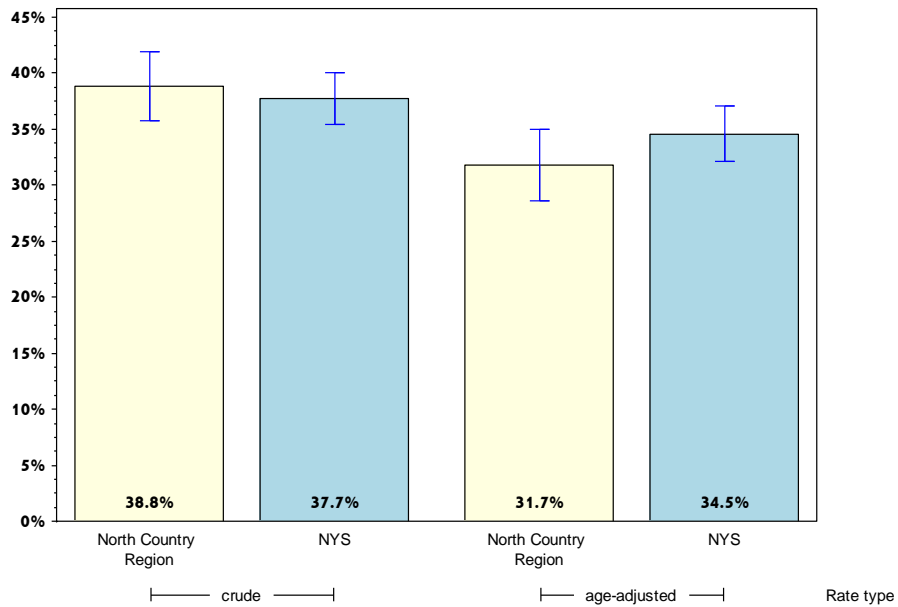
# Rates with <10 in the numerator or <50 in the denominator are suppressed.

<sup>^</sup> Highly variable rate (confidence interval with a half-width greater than 10).

# North Country

## Prevent Chronic Diseases

Percentage of adults 18 years and older with elevated cholesterol\*



	North Country				Statewide			
	Est. # of Adults	Percent	Lower 95% limit	Upper 95% limit	Est. # of Adults	Percent	Lower 95% limit	Upper 95% limit
<b>Total</b>	74,553	38.8	35.8	42.0	4,711,105	37.7	35.4	40.1
<b>Age</b>								
18-24	#				124,288	14.0	8.0	23.2
25-34	3,314	19.2 <sup>^</sup>	9.9	34.0	435,898	23.0	16.9	30.5
35-44	6,778	25.1	18.4	33.2	620,994	28.3	22.0	35.6
45-64	35,468	41.0	36.4	45.8	2,009,889	43.1	39.8	46.4
65+	28,575	60.3	55.8	64.7	1,439,336	55.4	51.3	59.4
<b>Race</b>								
White, NH	67,637	40.0	37.0	43.1	3,102,928	40.3	38.2	42.4
Black, NH	#				561,511	33.1	25.6	41.6
Hispanic	#				727,074	37.8	30.7	45.5
Other, NH	3,179	29.5 <sup>^</sup>	16.8	46.6	319,592	27.3 <sup>^</sup>	18.7	38.1
<b>Sex</b>								
Male	39,982	42.7	37.9	47.6	2,369,080	40.5	37.0	44.3
Female	34,571	35.1	31.4	39.0	2,342,025	35.2	32.4	38.2
<b>Age-adjusted<sup>&amp;</sup></b>		31.7	28.7	35.0		34.5	32.1	37.0

\* As diagnosed by a health professional.

& Percent is age adjusted to the 2000 United States Population.

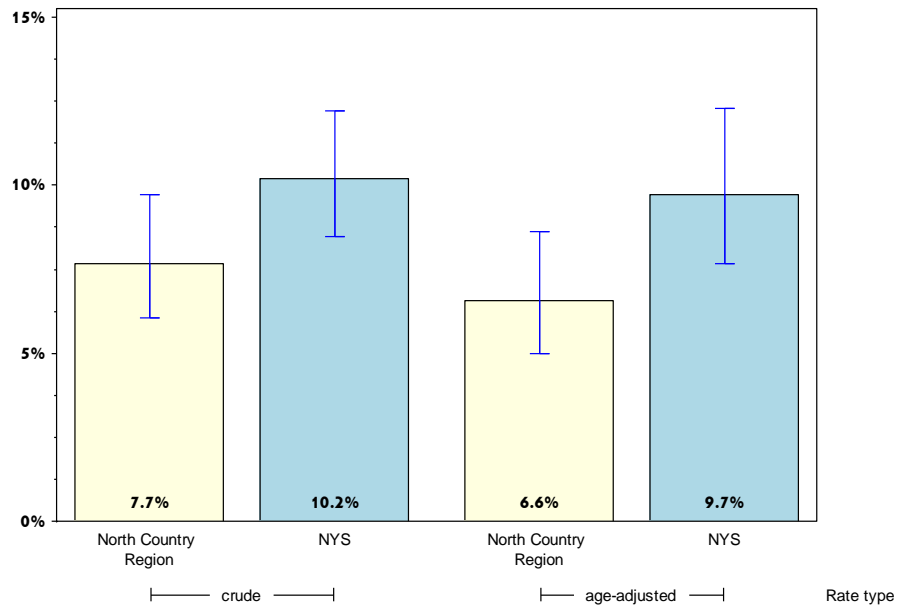
# Rates with <10 in the numerator or <50 in the denominator are suppressed.

<sup>^</sup> Highly variable rate (confidence interval with a half-width greater than 10).

# North Country

## Prevent Chronic Diseases

Percentage of adults who have taken a course or class to learn how to manage their chronic disease or condition\*



	North Country				Statewide			
	Est. # of Adults	Percent	Lower 95% limit	Upper 95% limit	Est. # of Adults	Percent	Lower 95% limit	Upper 95% limit
<b>Total</b>	9,988	7.7	6.0	9.7	713,905	10.2	8.5	12.2
<b>Age</b>								
18-24	#				11,969	2.9	1.4	6.1
25-34	#				137,115	17.9 <sup>^</sup>	9.2	31.8
35-44	#				51,465	6.0	3.8	9.2
45-64	5,290	9.3	6.7	12.7	282,601	10.2	8.0	13.0
65+	3,094	7.9	5.2	12.0	208,847	10.1	8.0	12.7
<b>Race</b>								
White, NH	8,517	7.3	5.6	9.4	398,657	8.8	7.0	11.1
Black, NH	#				143,698	14.2	9.5	20.7
Hispanic	#				92,991	8.7	4.5	16.4
Other, NH	#				78,559	19.0 <sup>^</sup>	10.4	32.2
<b>Sex</b>								
Male	4,706	7.4	5.0	10.9	324,668	10.2	7.7	13.4
Female	5,283	7.9	6.0	10.4	389,237	10.2	8.0	12.9
<b>Age-adjusted<sup>&amp;</sup></b>		6.6	5.0	8.6		9.7	7.7	12.3

\* Courses for high blood pressure, arthritis, or diabetes.

<sup>&</sup> Percent is age adjusted to the 2000 United States Population.

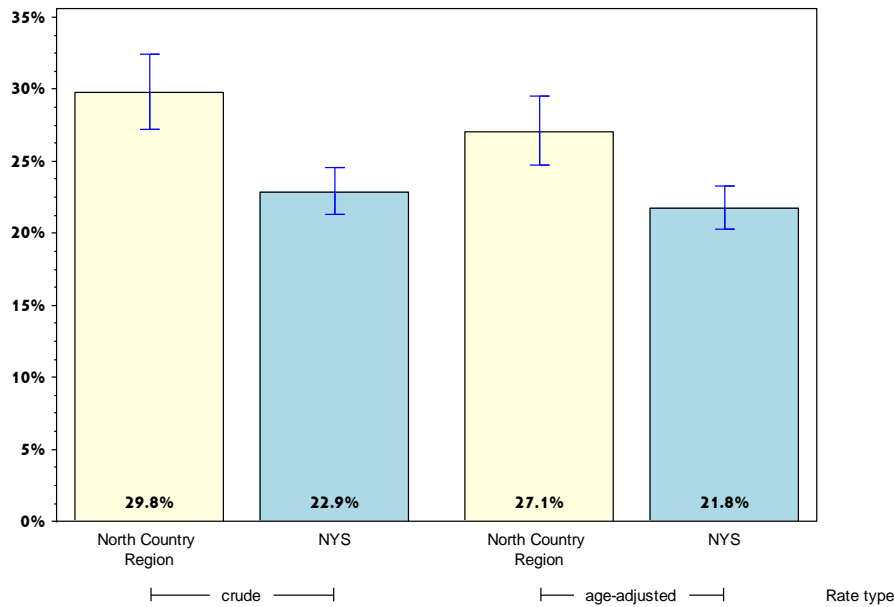
# Rates with <10 in the numerator or <50 in the denominator are suppressed.

<sup>^</sup> Highly variable rate (confidence interval with a half-width greater than 10).

# North Country

## Prevent Chronic Diseases

### Percentage of adults with arthritis\*



	North Country				Statewide			
	Est. # of Adults	Percent	Lower 95% limit	Upper 95% limit	Est. # of Adults	Percent	Lower 95% limit	Upper 95% limit
<b>Total</b>	73,148	29.8	27.2	32.4	3,491,206	22.9	21.3	24.6
<b>Age</b>								
18-24	#				40,067	2.0	1.1	3.6
25-34	3,273	10.8	5.6	20.0	228,246	8.3	5.9	11.7
35-44	6,894	19.8	14.5	26.4	323,152	12.9	9.4	17.5
45-64	35,034	37.9	33.5	42.4	1,465,151	29.2	26.5	32.1
65+	26,699	53.3	48.8	57.7	1,353,867	49.3	45.4	53.2
<b>Race</b>								
White, NH	65,059	30.4	27.9	33.1	2,474,787	27.2	25.6	28.9
Black, NH	#				400,524	18.5	13.4	24.9
Hispanic	#				460,563	18.0	13.6	23.4
Other, NH	4,661	32.5 <sup>^</sup>	20.0	48.1	155,331	10.8	7.2	15.8
<b>Sex</b>								
Male	32,111	25.3	21.7	29.3	1,258,898	17.3	15.2	19.6
Female	41,037	34.6	31.2	38.1	2,232,309	28.0	25.7	30.4
<b>Age-adjusted<sup>&amp;</sup></b>		27.1	24.7	29.5		21.8	20.3	23.3

\* Includes rheumatoid arthritis, gout, lupus, or fibromyalgia.

& Percent is age adjusted to the 2000 United States Population.

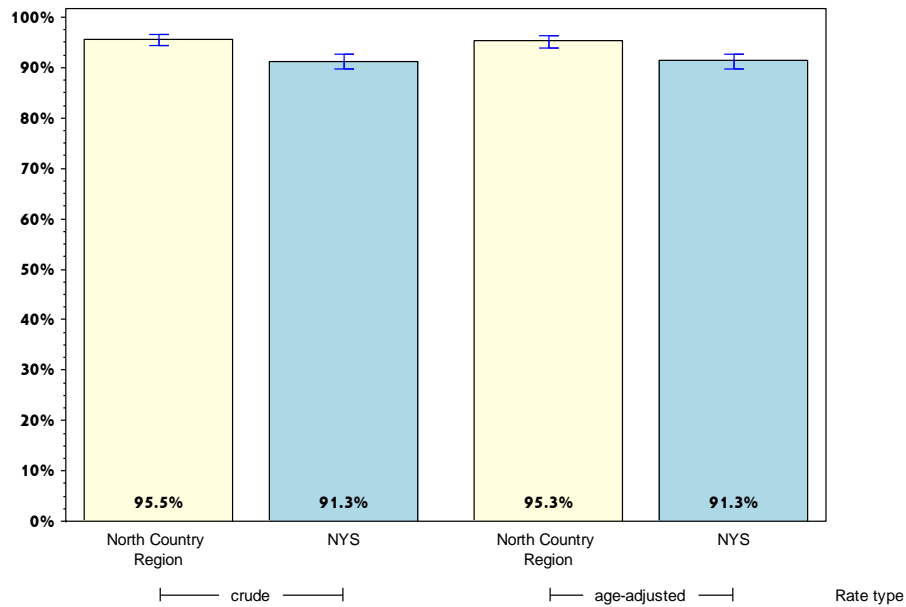
# Rates with <10 in the numerator or <50 in the denominator are suppressed.

<sup>^</sup> Highly variable rate (confidence interval with a half-width greater than 10).

# North Country

## Promote a Healthy and Safe Environment

### Percentage of adults who consider their neighborhood suitable for walking and physical activity



	North Country				Statewide			
	Est. # of Adults	Percent	Lower 95% limit	Upper 95% limit	Est. # of Adults	Percent	Lower 95% limit	Upper 95% limit
<b>Total</b>	222,821	95.5	94.3	96.4	13,107,891	91.3	89.8	92.6
<b>Age</b>								
18-24	34,874	98.6	95.5	99.6	1,641,319	87.9	80.9	92.5
25-34	26,562	92.4	86.7	95.7	2,218,379	86.6	80.9	90.8
35-44	31,219	95.2	90.2	97.7	2,218,331	93.4	90.6	95.4
45-64	84,111	95.1	92.9	96.6	4,372,743	92.2	90.1	93.9
65+	45,338	96.4	94.8	97.5	2,447,810	94.7	92.7	96.1
<b>Race</b>								
White, NH	194,850	95.4	94.1	96.4	8,055,698	93.1	91.7	94.3
Black, NH	#	#			1,798,763	89.3	83.3	93.4
Hispanic	#	#			1,963,304	84.3	78.2	89.0
Other, NH	11,350	92.4 <sup>^</sup>	80.5	97.3	1,290,125	94.0	88.9	96.9
<b>Sex</b>								
Male	116,192	97.1	95.5	98.1	6,375,291	92.5	90.3	94.3
Female	106,629	93.8	91.8	95.3	6,732,600	90.1	87.9	91.9
<b>Age-adjusted<sup>&amp;</sup></b>		95.3	93.8	96.4		91.3	89.8	92.6

& Percent is age adjusted to the 2000 United States Population.

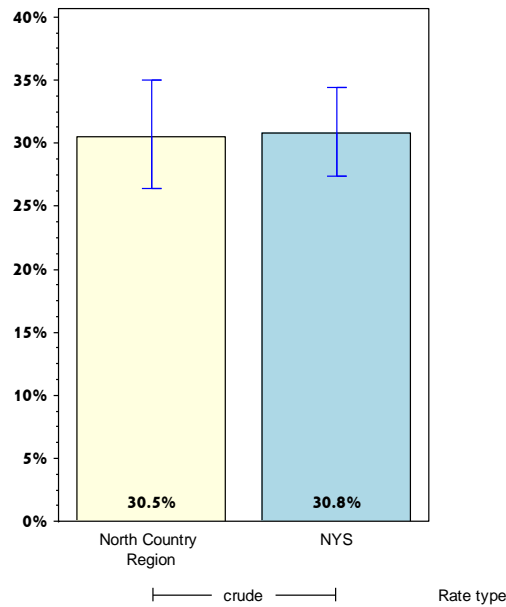
# Rates with <10 in the numerator or <50 in the denominator are suppressed.

<sup>^</sup> Highly variable rate (confidence interval with a half-width greater than 10).

# North Country

## Promote a Healthy and Safe Environment

Percentage of adults aged 65+ years with at least one fall in the past 12 months



	North Country				Statewide			
	Est. # of Adults	Percent	Lower 95% limit	Upper 95% limit	Est. # of Adults	Percent	Lower 95% limit	Upper 95% limit
<b>Total</b>	14,556	30.5	26.4	35.0	802,383	30.8	27.3	34.5
<b>Age<sup>+</sup></b>								
18-24								
25-34								
35-44								
45-64								
65+								
<b>Race</b>								
White, NH	13,203	29.9	25.7	34.3	600,059	31.3	28.3	34.5
Black, NH		#			61,485	22.9 <sup>^</sup>	12.6	38.1
Hispanic		#			96,513	39.1 <sup>^</sup>	21.8	59.7
Other, NH		#			44,326	25.2 <sup>^</sup>	12.2	45.0
<b>Sex</b>								
Male	7,014	30.6	24.1	38.1	324,764	30.4	25.5	35.7
Female	7,542	30.4	25.7	35.7	477,619	31.1	26.4	36.2
<b>Age-adjusted<sup>+,&amp;</sup></b>								

& Percent is age adjusted to the 2000 United States Population.

+ Age-adjusted and age specific percent not generated for health indicators with age range limits.

# Rates with <10 in the numerator or <50 in the denominator are suppressed.

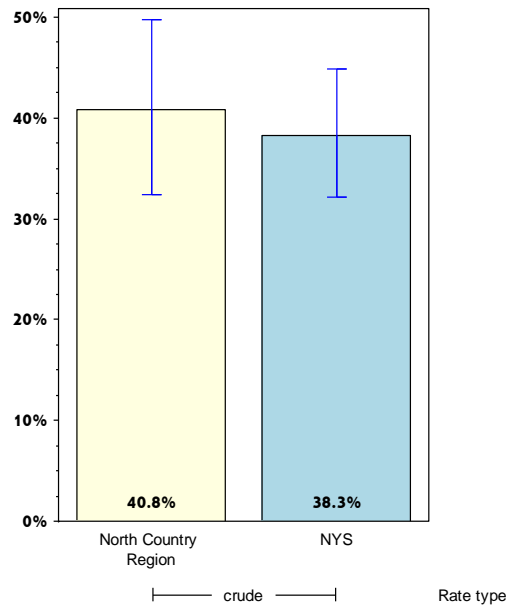
<sup>^</sup> Highly variable rate (confidence interval with a half-width greater than 10).



# North Country

## Promote a Healthy and Safe Environments

Among adults aged 65+ years with at least one fall in the past 12 months, percent that resulted in injury\*



	North Country				Statewide			
	Est. # of Adults	Percent	Lower 95% limit	Upper 95% limit	Est. # of Adults	Percent	Lower 95% limit	Upper 95% limit
<b>Total Age<sup>+</sup></b>	5,938	40.8	32.4	49.8	304,376	38.3	32.2	44.9
18-24								
25-34								
35-44								
45-64								
65+								
<b>Race</b>								
White, NH	5,210	39.5	31.0	48.6	223,708	37.6	32.1	43.4
Black, NH		#			33,030	53.7 <sup>^</sup>	28.5	77.2
Hispanic		#			31,933	34.1 <sup>^</sup>	11.7	66.8
Other, NH		#			15,705	35.4 <sup>^</sup>	12.0	68.8
<b>Sex</b>								
Male	3,059	43.6 <sup>^</sup>	29.9	58.4	103,371	32.2	24.1	41.5
Female	2,879	38.2	29.3	48.0	201,005	42.5	33.9	51.5
<b>Age-adjusted<sup>+,&amp;</sup></b>								

\* Falls that limited regular activities or lead to doctor visits.

& Percent is age adjusted to the 2000 United States Population.

+ Age-adjusted and age specific percent not generated for health indicators with age range limits.

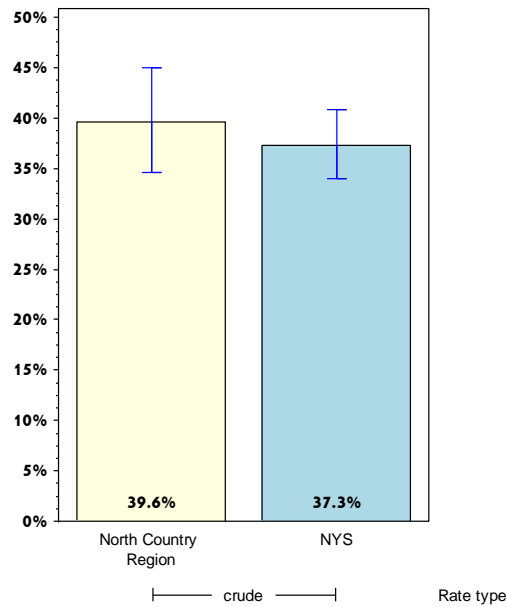
# Rates with <10 in the numerator or <50 in the denominator are suppressed.

<sup>^</sup> Highly variable rate (confidence interval with a half-width greater than 10).

## North Country

### Prevent HIV/STDs, Vaccine Preventable Diseases and Healthcare-Associated Infections

#### Percentage of adults aged 47-68 years reporting ever tested for Hepatitis C (HCV)



	North Country				Statewide			
	Est. # of Adults	Percent	Lower 95% limit	Upper 95% limit	Est. # of Adults	Percent	Lower 95% limit	Upper 95% limit
<b>Total</b>	32,843	39.6	34.6	44.9	1,662,747	37.3	34.0	40.8
<b>Age<sup>+</sup></b>								
18-24								
25-34								
35-44								
45-64								
65+								
<b>Race</b>								
White, NH	26,791	38.0	33.9	42.3	957,863	33.7	31.0	36.4
Black, NH		#			347,642	52.3 <sup>^</sup>	40.1	64.2
Hispanic		#			270,194	44.2 <sup>^</sup>	31.2	58.1
Other, NH		#			87,049	26.2 <sup>^</sup>	15.7	40.4
<b>Sex</b>								
Male	21,469	49.2	41.4	57.0	929,342	43.4	38.2	48.7
Female	11,374	29.0	24.0	34.6	733,405	31.7	27.6	36.1
<b>Age-adjusted<sup>+,&amp;</sup></b>								

& Percent is age adjusted to the 2000 United States Population.

+ Age-adjusted and age specific percent not generated for health indicators with age range limits.

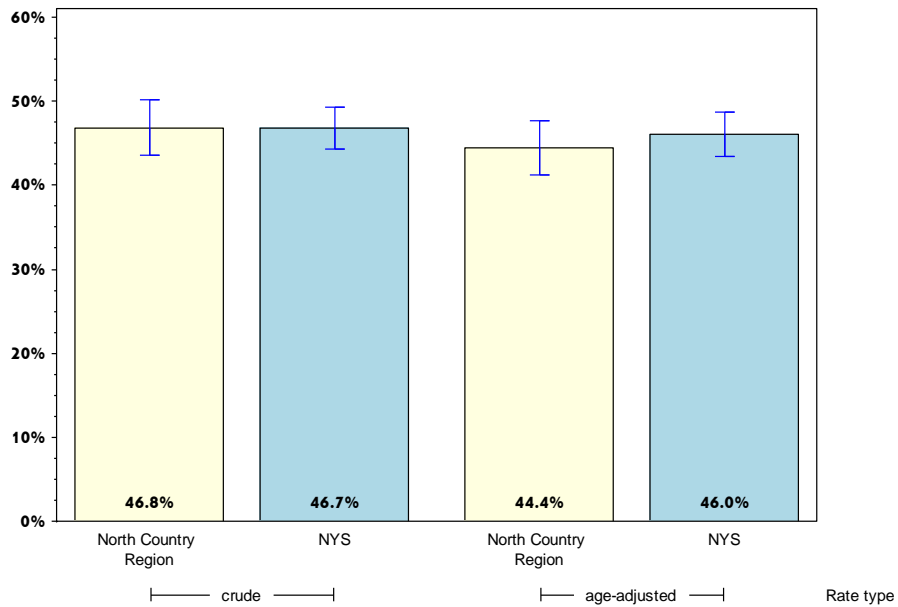
# Rates with <10 in the numerator or <50 in the denominator are suppressed.

<sup>^</sup> Highly variable rate (confidence interval with a half-width greater than 10).

# North Country

## Prevent HIV/STDs, Vaccine Preventable Diseases and Healthcare-Associated Infections

Percentage of adults aged 18+ years with flu immunization in the past year\*



	North Country				Statewide			
	Est. # of Adults	Percent	Lower 95% limit	Upper 95% limit	Est. # of Adults	Percent	Lower 95% limit	Upper 95% limit
<b>Total</b>	110,154	46.8	43.5	50.1	6,798,706	46.7	44.3	49.2
<b>Age</b>								
18-24	12,030	34.2 <sup>^</sup>	23.1	47.3	600,414	31.7	23.4	41.5
25-34	11,377	39.5	30.4	49.4	907,897	35.3	29.0	42.1
35-44	9,920	30.2	23.6	37.7	981,422	41.1	33.9	48.6
45-64	40,255	45.2	40.5	49.9	2,282,268	47.4	44.1	50.8
65+	35,970	74.4	70.0	78.3	1,895,586	72.1	67.9	75.9
<b>Race</b>								
White, NH	100,613	48.8	45.6	52.1	4,296,522	49.3	47.1	51.5
Black, NH		#			718,122	35.0	27.6	43.3
Hispanic		#			971,941	40.8	34.1	47.8
Other, NH	5,223	42.4 <sup>^</sup>	26.5	60.0	812,120	58.5 <sup>^</sup>	45.1	70.7
<b>Sex</b>								
Male	47,885	39.6	35.0	44.4	3,045,064	43.8	40.1	47.5
Female	62,269	54.4	50.2	58.7	3,753,643	49.5	46.2	52.8
<b>Age-adjusted<sup>&amp;</sup></b>		44.4	41.2	47.7		46.0	43.4	48.6

\* Includes flu shot or flu spray

& Percent is age adjusted to the 2000 United States Population.

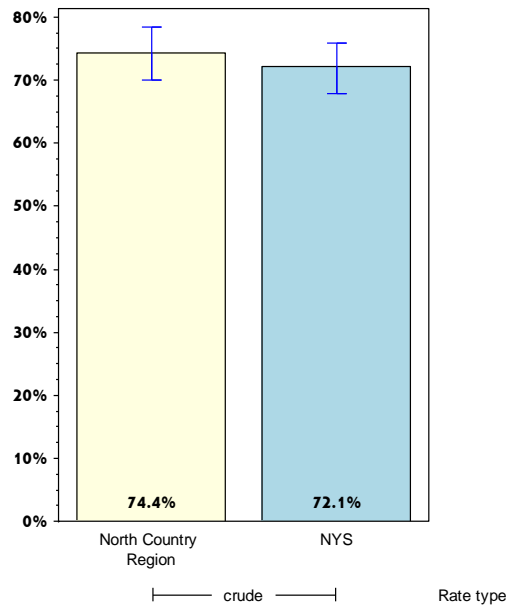
# Rates with <10 in the numerator or <50 in the denominator are suppressed.

<sup>^</sup> Highly variable rate (confidence interval with a half-width greater than 10).

## North Country

### Prevent HIV/STDs, Vaccine Preventable Diseases and Healthcare-Associated Infections

Percentage of adults aged 65+ years with flu immunization in the past year\*



	North Country				Statewide			
	Est. # of Adults	Percent	Lower 95% limit	Upper 95% limit	Est. # of Adults	Percent	Lower 95% limit	Upper 95% limit
<b>Total Age<sup>+</sup></b>	35,970	74.4	70.0	78.3	1,895,586	72.1	67.9	75.9
18-24								
25-34								
35-44								
45-64								
65+								
<b>Race</b>								
White, NH	33,589	75.0	70.6	78.9	1,484,360	76.9	73.9	79.6
Black, NH		#			103,016	38.4 <sup>^</sup>	23.8	55.5
Hispanic		#			170,589	69.0 <sup>^</sup>	47.8	84.3
Other, NH		#			137,621	75.2 <sup>^</sup>	51.4	89.7
<b>Sex</b>								
Male	17,159	73.6	66.0	80.1	802,715	73.9	67.7	79.3
Female	18,811	75.1	70.2	79.4	1,092,871	70.8	65.0	76.0
<b>Age-adjusted<sup>+,&amp;</sup></b>								

\* Includes flu shot or flu spray

& Percent is age adjusted to the 2000 United States Population.

+ Age-adjusted and age specific percent not generated for health indicators with age range limits.

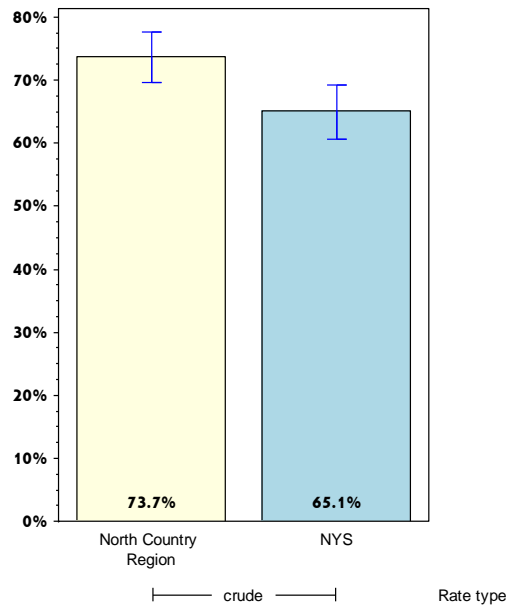
# Rates with <10 in the numerator or <50 in the denominator are suppressed.

<sup>^</sup> Highly variable rate (confidence interval with a half-width greater than 10).

## North Country

### Prevent HIV/STDs, Vaccine Preventable Diseases and Healthcare-Associated Infections

#### Percentage of adults aged 65+ years with pneumococcal immunization



	North Country				Statewide			
	Est. # of Adults	Percent	Lower 95% limit	Upper 95% limit	Est. # of Adults	Percent	Lower 95% limit	Upper 95% limit
<b>Total</b>	34,235	73.7	69.5	77.5	1,617,276	65.1	60.7	69.2
<b>Age<sup>+</sup></b>								
18-24								
25-34								
35-44								
45-64								
65+								
<b>Race</b>								
White, NH	31,731	73.7	69.4	77.6	1,303,462	71.4	68.1	74.4
Black, NH		#			123,843	48.9 <sup>^</sup>	30.2	67.8
Hispanic		#			104,466	45.7 <sup>^</sup>	27.5	65.3
Other, NH		#			85,505	48.1 <sup>^</sup>	27.7	69.2
<b>Sex</b>								
Male	15,735	70.0	62.7	76.4	631,549	62.4	56.7	67.7
Female	18,500	77.3	72.6	81.3	985,727	66.9	60.5	72.7
<b>Age-adjusted<sup>+,&amp;</sup></b>								

& Percent is age adjusted to the 2000 United States Population.

+ Age-adjusted and age specific percent not generated for health indicators with age range limits.

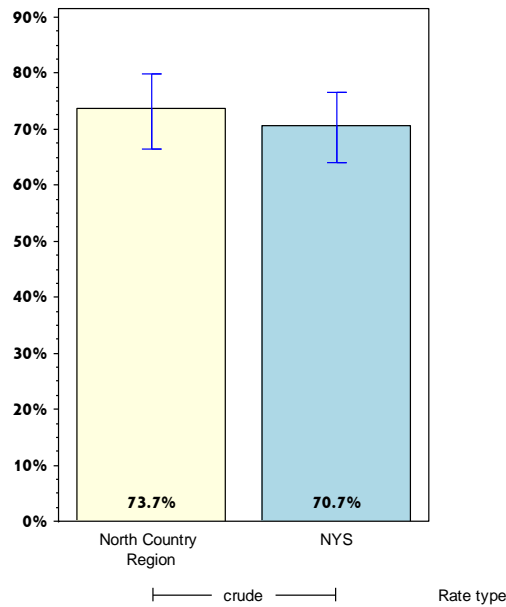
# Rates with <10 in the numerator or <50 in the denominator are suppressed.

<sup>^</sup> Highly variable rate (confidence interval with a half-width greater than 10).

# North Country

## Promote Healthy Women, Infants, and Children

Percentage of women aged 18-44 years who had dental visit within the last year



	North Country				Statewide			
	Est. # of Adults	Percent	Lower 95% limit	Upper 95% limit	Est. # of Adults	Percent	Lower 95% limit	Upper 95% limit
<b>Total</b>	32,535	73.7	66.4	79.8	2,268,176	70.7	64.0	76.5
<b>Age<sup>+</sup></b>								
18-24								
25-34								
35-44								
45-64								
65+								
<b>Race</b>								
White, NH	28,511	72.7	65.2	79.1	1,155,302	73.5	68.1	78.3
Black, NH		#			426,771	78.8 <sup>^</sup>	61.7	89.5
Hispanic		#			412,421	62.2 <sup>^</sup>	48.3	74.4
Other, NH		#			273,683	63.0 <sup>^</sup>	30.7	86.8
<b>Sex</b>								
Male		#				#		
Female	32,535	73.7	66.4	79.8	2,268,176	70.7	64.0	76.5
<b>Age-adjusted<sup>+,&amp;</sup></b>								

& Percent is age adjusted to the 2000 United States Population.

+ Age-adjusted and age specific percent not generated for health indicators with age range limits.

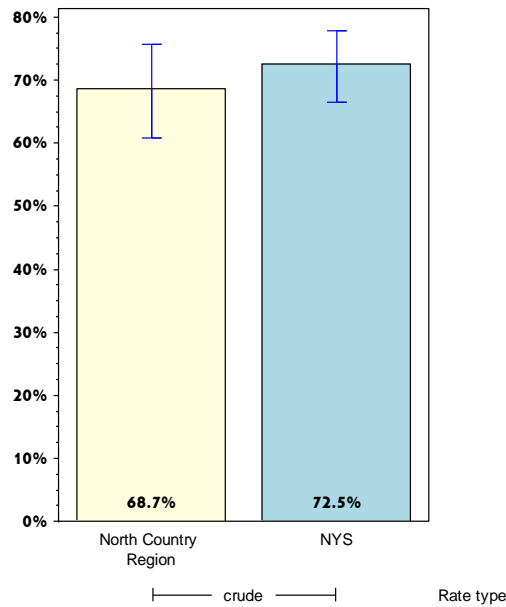
# Rates with <10 in the numerator or <50 in the denominator are suppressed.

<sup>^</sup> Highly variable rate (confidence interval with a half-width greater than 10).

# North Country

## Promote Healthy Women, Infants, and Children

Women aged 18-44 years who saw a doctor for a routine checkup within the last year



	North Country				Statewide			
	Est. # of Adults	Percent	Lower 95% limit	Upper 95% limit	Est. # of Adults	Percent	Lower 95% limit	Upper 95% limit
<b>Total</b>	31,701	68.7	60.8	75.7	2,615,375	72.5	66.5	77.8
<b>Age<sup>+</sup></b>								
18-24								
25-34								
35-44								
45-64								
65+								
<b>Race</b>								
White, NH	28,928	70.4	62.6	77.2	1,220,281	70.1	65.1	74.6
Black, NH		#			512,270	83.8 <sup>^</sup>	68.8	92.4
Hispanic		#			606,739	76.3 <sup>^</sup>	64.1	85.3
Other, NH		#			276,085	60.1 <sup>^</sup>	30.5	83.8
<b>Sex</b>								
Male		#				#		
Female	31,701	68.7	60.8	75.7	2,615,375	72.5	66.5	77.8
<b>Age-adjusted<sup>+,&amp;</sup></b>								

& Percent is age adjusted to the 2000 United States Population.

+ Age-adjusted and age specific percent not generated for health indicators with age range limits.

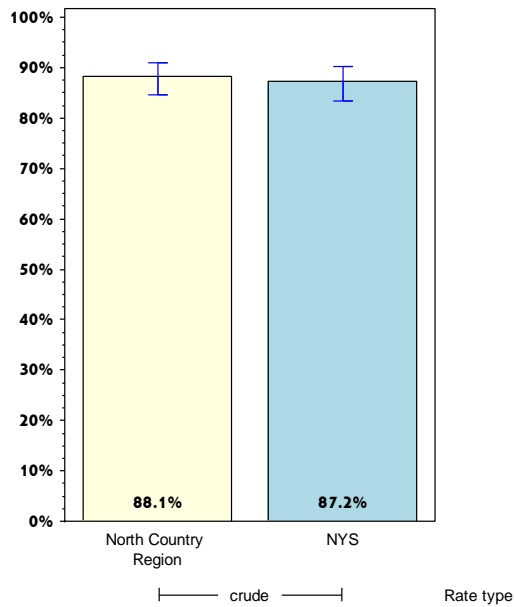
# Rates with <10 in the numerator or <50 in the denominator are suppressed.

<sup>^</sup> Highly variable rate (confidence interval with a half-width greater than 10).

# North Country

## Promote Healthy Women, Infants, and Children

### Percentage of women aged 18-64 years with health care coverage



	North Country				Statewide			
	Est. # of Adults	Percent	Lower 95% limit	Upper 95% limit	Est. # of Adults	Percent	Lower 95% limit	Upper 95% limit
<b>Total</b>	81,591	88.1	84.6	91.0	5,351,099	87.2	83.4	90.2
<b>Age<sup>+</sup></b>								
18-24								
25-34								
35-44								
45-64								
65+								
<b>Race</b>								
White, NH	71,891	88.3	84.7	91.2	3,178,979	91.6	90.0	93.0
Black, NH		#			916,108	93.3	88.7	96.1
Hispanic		#			807,553	76.0	66.5	83.5
Other, NH		#			448,460	71.8 <sup>^</sup>	43.3	89.5
<b>Sex</b>								
Male		#				#		
Female	81,591	88.1	84.6	91.0	5,351,099	87.2	83.4	90.2
<b>Age-adjusted<sup>+,&amp;</sup></b>								

& Percent is age adjusted to the 2000 United States Population.

+ Age-adjusted and age specific percent not generated for health indicators with age range limits.

# Rates with <10 in the numerator or <50 in the denominator are suppressed.

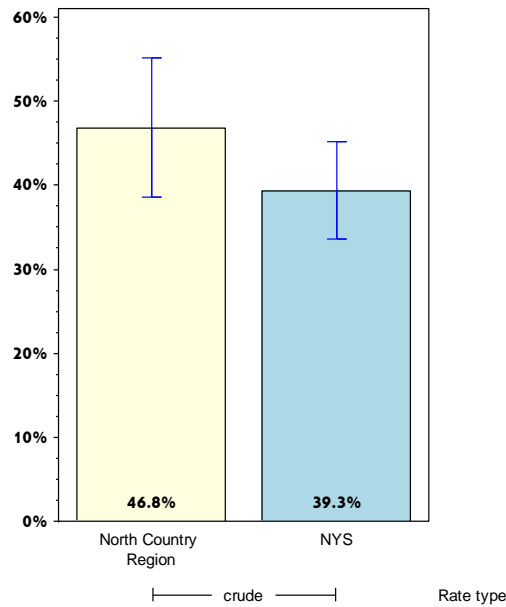
<sup>^</sup> Highly variable rate (confidence interval with a half-width greater than 10).



# North Country

## Promote Healthy Women, Infants, and Children

Percentage of women aged 18-44 years whose health care provider discussed planning a healthy pregnancy



	North Country				Statewide			
	Est. # of Adults	Percent	Lower 95% limit	Upper 95% limit	Est. # of Adults	Percent	Lower 95% limit	Upper 95% limit
<b>Total</b>	20,534	46.8	38.5	55.2	1,268,971	39.3	33.7	45.2
<b>Age<sup>+</sup></b>								
18-24								
25-34								
35-44								
45-64								
65+								
<b>Race</b>								
White, NH	18,718	48.1	39.5	56.7	723,302	45.9	41.1	50.9
Black, NH		#			291,237	53.7 <sup>^</sup>	35.5	71.0
Hispanic		#			192,904	28.5 <sup>^</sup>	19.0	40.3
Other, NH		#			61,528	14.1 <sup>^</sup>	6.5	27.9
<b>Sex</b>								
Male		#				#		
Female	20,534	46.8	38.5	55.2	1,268,971	39.3	33.7	45.2
<b>Age-adjusted<sup>+,&amp;</sup></b>								

& Percent is age adjusted to the 2000 United States Population.

+ Age-adjusted and age specific percent not generated for health indicators with age range limits.

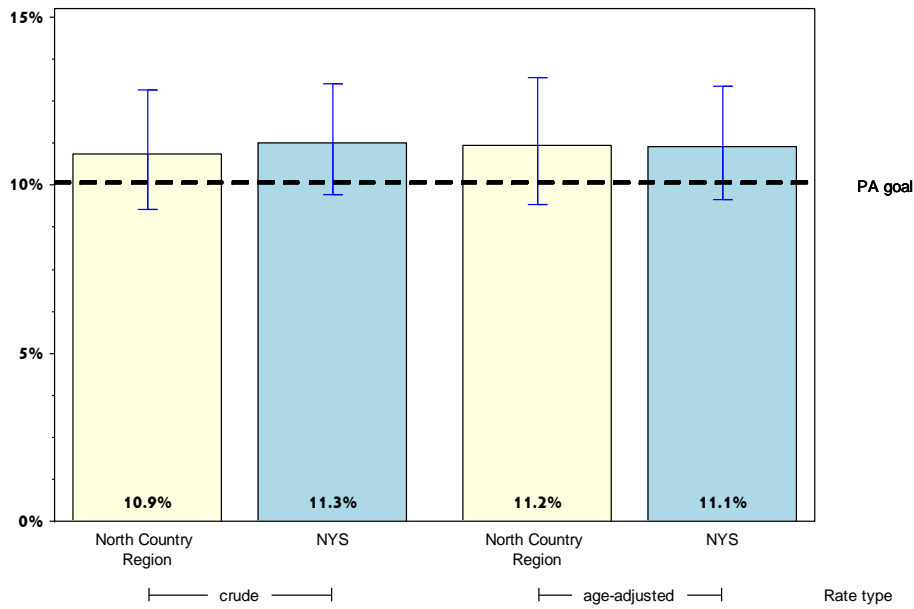
# Rates with <10 in the numerator or <50 in the denominator are suppressed.

<sup>^</sup> Highly variable rate (confidence interval with a half-width greater than 10).

# North Country

## Promote Mental Health and Prevention Substance Abuse

Percentage of adults with poor mental health for 14 or more days in the last month



	North Country				Statewide			
	Est. # of Adults	Percent	Lower 95% limit	Upper 95% limit	Est. # of Adults	Percent	Lower 95% limit	Upper 95% limit
<b>Total</b>	26,594	10.9	9.3	12.8	1,672,677	11.3	9.7	13.0
<b>Age</b>								
18-24	4,035	10.9	6.0	19.0	186,862	9.5	6.7	13.1
25-34	4,055	13.4	8.7	20.2	418,716	15.7	10.2	23.4
35-44	3,975	11.6	7.7	17.0	259,463	10.5	7.0	15.4
45-64	11,488	12.6	10.0	15.6	587,164	12.1	10.3	14.2
65+	2,947	6.0	4.0	8.8	175,961	6.7	4.9	9.0
<b>Race</b>								
White, NH	22,928	10.8	9.1	12.8	1,072,012	12.0	10.2	14.2
Black, NH		#			237,227	11.2	7.0	17.5
Hispanic		#			264,437	11.0	7.1	16.6
Other, NH	1,840	13.3 <sup>^</sup>	7.0	24.1	99,001	7.0	3.9	12.2
<b>Sex</b>								
Male	10,174	8.1	6.0	10.9	734,315	10.4	7.9	13.5
Female	16,419	13.9	11.5	16.7	938,362	12.1	10.2	14.2
<b>Age-adjusted<sup>&amp;</sup></b>		11.2	9.4	13.2		11.1	9.6	13.0

& Percent is age adjusted to the 2000 United States Population.

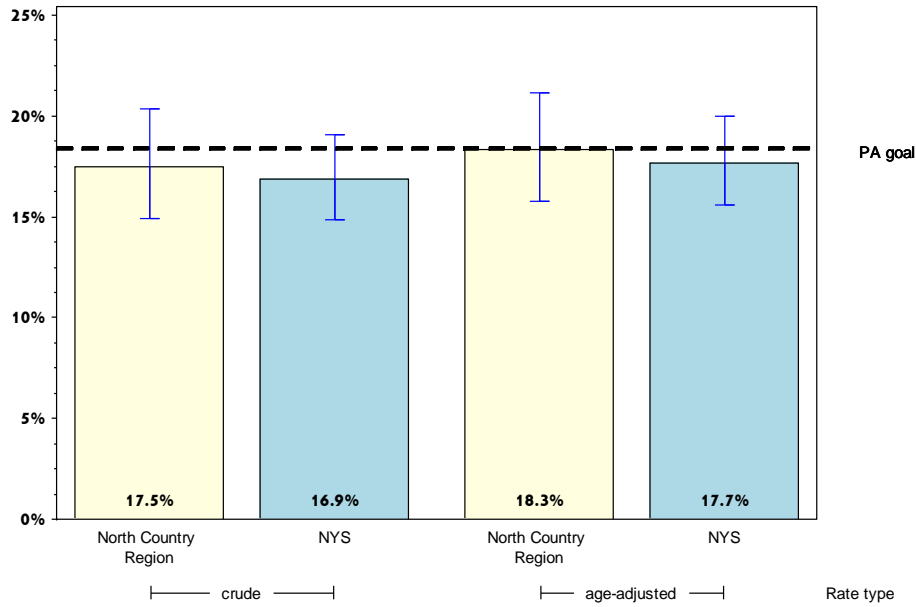
# Rates with <10 in the numerator or <50 in the denominator are suppressed.

<sup>^</sup> Highly variable rate (confidence interval with a half-width greater than 10).

# North Country

## Promote Mental Health and Prevention Substance Abuse

Percentage of adult binge drinking during the past month\*



	North Country				Statewide			
	Est. # of Adults	Percent	Lower 95% limit	Upper 95% limit	Est. # of Adults	Percent	Lower 95% limit	Upper 95% limit
<b>Total</b>	40,850	17.5	14.9	20.4	2,413,447	16.9	14.9	19.1
<b>Age</b>								
18-24	12,835	37.0 <sup>^</sup>	25.1	50.6	515,466	27.1	19.4	36.6
25-34	6,170	21.4	15.7	28.6	633,963	25.0	18.9	32.3
35-44	6,989	20.8	15.0	28.1	509,131	22.6	17.2	29.1
45-64	12,611	14.3	11.6	17.6	656,578	13.7	11.7	16.0
65+	2,218	4.6	3.2	6.6	86,636	3.4	2.7	4.2
<b>Race</b>								
White, NH	37,011	18.0	15.2	21.1	1,649,594	19.1	17.0	21.5
Black, NH	#	#			324,364	16.3 <sup>^</sup>	9.4	26.8
Hispanic	#	#			277,966	11.6	7.7	17.1
Other, NH	2,005	15.5 <sup>^</sup>	7.9	28.0	161,523	12.4	6.8	21.7
<b>Sex</b>								
Male	29,018	24.4	20.1	29.3	1,567,117	22.8	19.3	26.8
Female	11,832	10.3	8.0	13.2	846,330	11.4	9.6	13.4
<b>Age-adjusted<sup>&amp;</sup></b>		18.3	15.8	21.1		17.7	15.6	20.0

\* Men who have five or more drinks, women having four or more drinks on one occasion

& Percent is age adjusted to the 2000 United States Population.

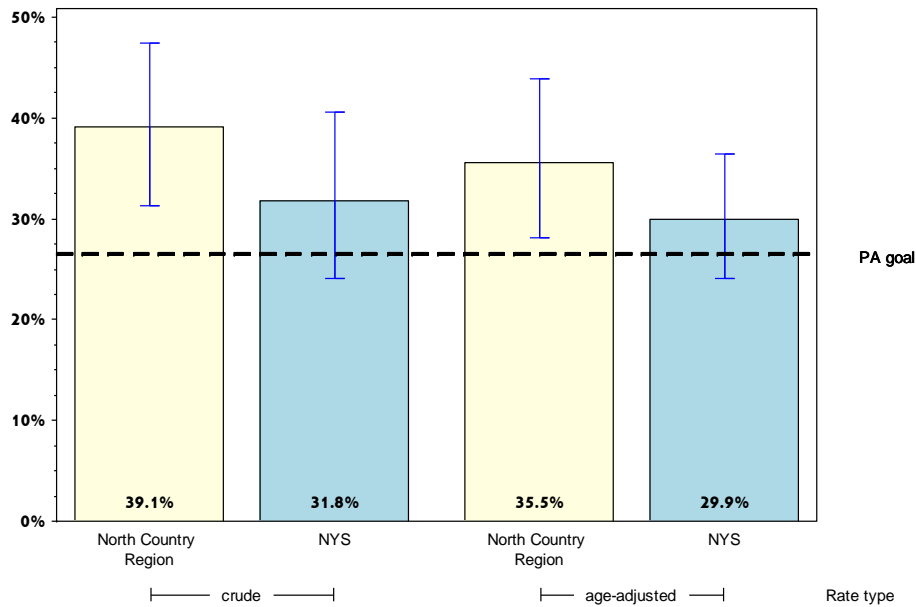
# Rates with <10 in the numerator or <50 in the denominator are suppressed.

<sup>^</sup> Highly variable rate (confidence interval with a half-width greater than 10).

# North Country

## Promote Mental Health and Prevention Substance Abuse

### Percentage of cigarette smoking among adults who report poor mental health



	North Country				Statewide			
	Est. # of Adults	Percent	Lower 95% limit	Upper 95% limit	Est. # of Adults	Percent	Lower 95% limit	Upper 95% limit
<b>Total</b>	10,221	39.1	31.3	47.4	519,245	31.8	24.1	40.6
<b>Age</b>								
18-24	#	#			64,468	35.6 <sup>^</sup>	22.4	51.5
25-34	#	#			192,926	47.3 <sup>^</sup>	24.8	70.8
35-44	#	#			70,340	27.6 <sup>^</sup>	16.6	42.1
45-64	5,474	47.7 <sup>^</sup>	36.5	59.0	177,977	31.2	24.0	39.5
65+	#	#			13,368	7.7	4.1	13.9
<b>Race</b>								
White, NH	8,398	37.3	29.3	46.2	423,246	39.9 <sup>^</sup>	29.9	50.7
Black, NH	#	#			33,694	14.4 <sup>^</sup>	7.7	25.3
Hispanic	#	#			45,968	18.1 <sup>^</sup>	9.4	31.9
Other, NH	#	#			16,336	19.6 <sup>^</sup>	9.4	36.5
<b>Sex</b>								
Male	3,234	32.7 <sup>^</sup>	21.0	47.2	272,857	38.4 <sup>^</sup>	24.1	55.0
Female	6,987	42.9	33.5	52.8	246,388	26.7	20.7	33.8
<b>Age-adjusted<sup>&amp;</sup></b>		35.5	28.1	43.8		29.9	24.1	36.4

& Percent is age adjusted to the 2000 United States Population.

# Rates with <10 in the numerator or <50 in the denominator are suppressed.

<sup>^</sup> Highly variable rate (confidence interval with a half-width greater than 10).