

eBRFSS 2013-2014 Health Indicators: Long Island

General Description	2
Improve Health Status and Reduce Health Disparities	3
Percentage of adults who did not receive medical care because of cost	3
Percentage of adults who have a regular health care provider	4
Percentage of adults who had a dentist visit within the past year	5
Percentage of adults living with a disability.....	6
Percentage of adults aged 18-64 years with healthcare coverage	7
Percentage of adults aged 18-64 years who saw a doctor for a routine checkup within the last year	8
Percentage of adults experiencing housing insecurity in the past 12 months.....	9
Percentage of adults experiencing food insecurity in the past 12 months.....	10
Percentage of adults with poor self-reported health	11
Percentage of adults who report 14 or more days of poor physical health.....	12
Prevent Chronic Diseases	13
Percentage of adults who are obese	13
Percentage of adults with an annual household income less than \$25,000 who are obese	14
Percentage of adults living with a disability who are obese	15
Percentage of adults overweight or obese	16
Percentage of adults who participated in leisure time physical activity in the past 30 days.....	17
Percentage of adults who consume one or more sugary drinks daily	18
Percentage of adults who consume fast-food three or more times per week	19
Percentage of adults with physician-diagnosed diabetes.....	20
Percentage of adults who are current smokers	21
Percentage of adults with annual household income less than \$25,000 who are current smokers	22
Percentage of adults aged 18-24 years who are current smokers.....	23
Percentage of women aged 50-74 years receiving breast cancer screening based on recent guidelines	24
Percentage of women aged 50-74 years with annual household income of less than \$25,000 receiving breast cancer screening based on recent guidelines.....	25
Percentage of women aged 21-65 years receiving cervical cancer screening based on recent guidelines	26
Percentage of women aged 21-65 years with annual household income of less than \$25,000 receiving cervical cancer screening based on recent guidelines.....	27
Percentage of adults aged 50-75 years receiving colorectal cancer screening based on recent guidelines.....	28
Percentage of adults aged 50-75 years with annual household income less than \$25,000 receiving colorectal cancer screening based on recent guidelines.....	29
Percentage of adults who had a test for high blood sugar or diabetes within the past three years	30
Percentage of adults with physician-diagnosed prediabetes	31
Percentage of adults with physician-diagnosed high blood pressure.....	32
Percentage of adults with diagnosed high blood pressure taking high blood pressure medication	33
Percentage of adults with current asthma	34
Percent of adults with cholesterol checked.....	35
Percentage of adults 18 years and older with elevated cholesterol.....	36
Percentage of adults who have taken a course or class to learn how to manage their chronic disease or condition	37
Percentage of adults with arthritis	38
Promote a Healthy and Safe Environment	39
Percentage of adults who consider their neighborhood suitable for walking and physical activity.....	39
Percentage of adults aged 65+ years with at least one fall in the past 12 months.....	40
Among adults aged 65+ years with at least one fall in the past 12 months, percent that resulted in injury.....	41
Prevent HIV/STDs, Vaccine Preventable Diseases and Healthcare-Associated Infections.....	42
Percentage of adults aged 47-68 years reporting ever tested for Hepatitis C (HCV).....	42
Percentage of adults aged 18+ years with flu immunization in the past year	43
Percentage of adults aged 65+ years with flu immunization in the past year	44
Percentage of adults aged 65+ years with pneumococcal immunization.....	45
Promote Healthy Women, Infants, and Children	46
Percentage of women aged 18-44 years who had dental visit within the last year	46
Women aged 18-44 years who saw a doctor for a routine checkup within the last year.....	47
Percentage of women aged 18-64 years with health care coverage	48
Percentage of women aged 18-44 years whose health care provider discussed planning a healthy pregnancy	49
Promote Mental Health and Prevention Substance Abuse	50
Percentage of adults with poor mental health for 14 or more days in the last month	50
Percentage of adult binge drinking during the past month	51
Percentage of cigarette smoking among adults who report poor mental health.....	52

General Description

The New York State Expanded Behavioral Risk Factor Surveillance System 2013-2014 (2014 eBRFSS) was design to supplement the Center for Disease Control and Prevention (CDC) Behavioral Risk Factor Surveillance System (BRFSS), which is conducted annually in New York State. The purpose of the 2014 eBRFSS was to produce local information on key public health issues. Data for the project were collected from April 15, 2013 to May 10, 2014. The 2014 eBRFSS reached both households with landline telephones and households which only had cell phones. Like the annual BRFSS, New York State's 2014 eBRFSS was designed to be representative of the non-institutionalized adult household population, aged 18 years and older.

Reported Health Indicators

There are a total of 50 health indicators included in the report. The health indicators include 10 measures included in the New York State Department of Health's Prevention Agenda, NYS Health Innovation Plan (SHIP), Delivery System Reform Incentive Payment (DSRIP) Program, or the NYS Community Health Indicator Reports (CHIRS). An additional 40 important health indicators are also included. The indicators are organized by the Priority Area of the Prevention Agenda and are reported statewide, by region, and by county.

Data Collection Methodology, Sampling and Weighting

The data collection methods for the 2014 eBRFSS aligned with the CDC's standard annual BRFSS methods. The 2014 eBRFSS questionnaire used standard questions from the BRFSS. Survey interviews were conducted in both English and Spanish. There were 31,690 completed interviews.

The sampling plan for the eBRFSS was developed to result in valid health indicator estimates for New York City (NYC) and each of the 57 counties outside NYC. The sampling approach stratified landlines by county and implemented a disproportionate stratified sampling design that accounted for both listed-households and unlisted numbers. Cell phone households were accounted for through additional strata that covered contiguous groups of counties.

Data were weighted to represent the population using a methodology known as iterative proportional fitting (raking). Raking adjusted the data so that groups underrepresented in the sample were more accurately represented in the estimated rates. Raking also enabled surveys conducted by cell phone to be included in the weighting and to accurately match sample distributions of specified demographic characteristics of the population. The raking categories included in the eBRFSS were: age, gender, race/ethnicity, education, marital status, owner/renter status, telephone usage (i.e. landline and cell phone combinations), and county of residence.

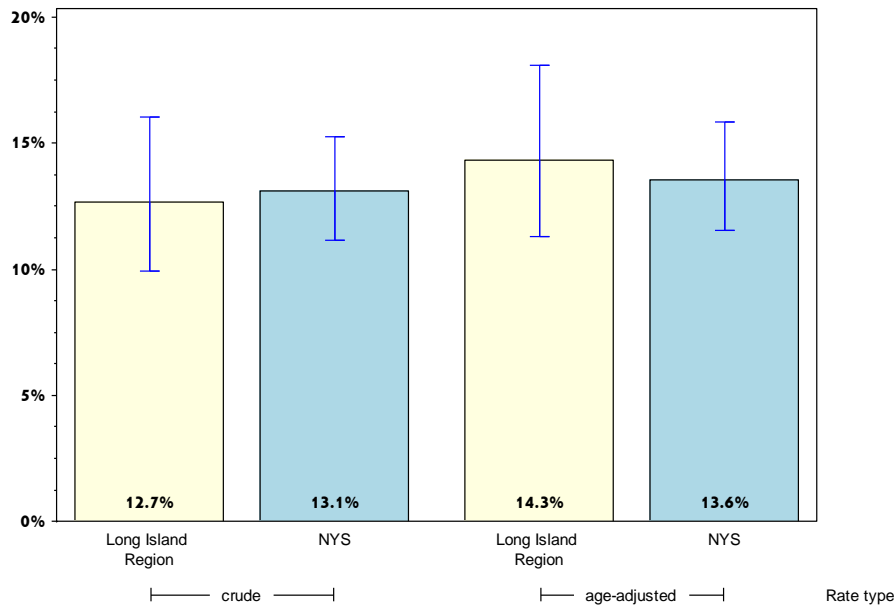
Limitations of Data Use:

During data analysis, criteria were applied to suppress rates based on too few surveys to be reliable and to identify rates that are highly variable. Rates in which less than 10 respondents were in the numerator or less than 50 respondents were in the denominator were considered unreliable and suppressed from reporting. Rates considered to have high variability due to having confidence limits greater than $\pm 10\%$ are noted.

Long Island

Improve Health Status and Reduce Health Disparities

Percentage of adults who did not receive medical care because of cost*



	Long Island				Statewide			
	Est. # of Adults	Percent	Lower 95% limit	Upper 95% limit	Est. # of Adults	Percent	Lower 95% limit	Upper 95% limit
Total	277,850	12.7	9.9	16.0	1,994,210	13.1	11.2	15.3
Age								
18-24	#	#			281,654	14.1 [^]	7.5	25.1
25-34	87,958	28.0 [^]	18.3	40.2	537,866	19.7	14.2	26.6
35-44	65,885	18.7	11.6	28.7	423,154	17.0	12.3	23.0
45-64	72,916	9.3	6.0	14.1	596,074	11.9	9.8	14.3
65+	18,726	4.4	2.0	9.0	139,733	5.1	3.0	8.4
Race								
White, NH	181,555	11.6	8.4	15.7	959,531	10.5	8.7	12.7
Black, NH	#	#			335,184	15.5	10.0	23.4
Hispanic	80,680	24.3 [^]	16.2	34.9	465,114	18.4	14.5	23.0
Other, NH	#	#			234,381	16.3 [^]	7.3	32.6
Sex								
Male	132,319	12.5	8.5	18.2	890,677	12.3	9.6	15.5
Female	145,531	12.8	9.4	17.1	1,103,533	13.8	11.2	16.9
Age-adjusted^{&}		14.3	11.3	18.1		13.6	11.6	15.8

* Among people needing to see a doctor in the past 12 months

& Percent is age adjusted to the 2000 United States Population.

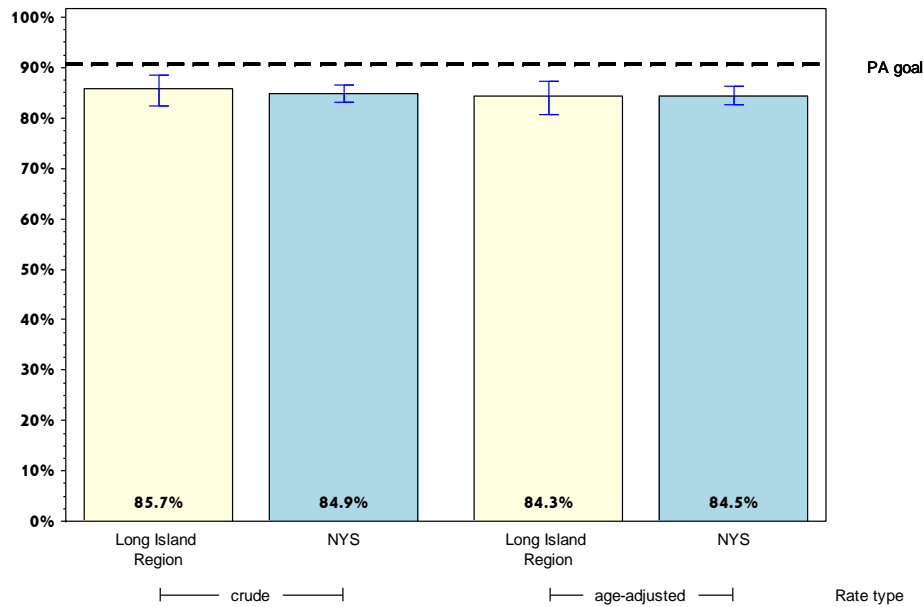
Rates with <10 in the numerator or <50 in the denominator are suppressed.

[^] Highly variable rate (confidence interval with a half-width greater than 10).

Long Island

Improve Health Status and Reduce Health Disparities

Percentage of adults who have a regular health care provider



	Long Island				Statewide			
	Est. # of Adults	Percent	Lower 95% limit	Upper 95% limit	Est. # of Adults	Percent	Lower 95% limit	Upper 95% limit
Total	1,868,868	85.7	82.4	88.5	12,905,860	84.9	83.1	86.6
Age								
18-24	176,765	71.8 [^]	56.3	83.4	1,486,954	76.3	69.8	81.8
25-34	229,636	74.4 [^]	63.9	82.7	1,983,479	72.3	66.1	77.7
35-44	307,841	86.4	78.1	91.9	2,091,488	84.7	79.6	88.7
45-64	689,578	88.0	81.6	92.3	4,450,345	88.6	85.5	91.1
65+	408,859	95.2	91.8	97.3	2,640,269	96.0	94.7	97.1
Race								
White, NH	1,371,971	88.0	84.1	91.0	7,996,007	88.0	86.6	89.3
Black, NH	122,091	100.0	.	.	1,926,090	89.0	83.6	92.7
Hispanic	222,406	66.5 [^]	55.4	76.0	1,725,153	68.6	61.2	75.1
Other, NH	152,400	92.5	84.7	96.5	1,258,610	87.9	79.9	93.0
Sex								
Male	830,712	79.8	74.3	84.4	5,804,831	80.1	77.1	82.8
Female	1,038,156	91.1	86.9	94.1	7,101,029	89.3	87.0	91.3
Age-adjusted^{&}		84.3	80.7	87.3		84.5	82.5	86.2

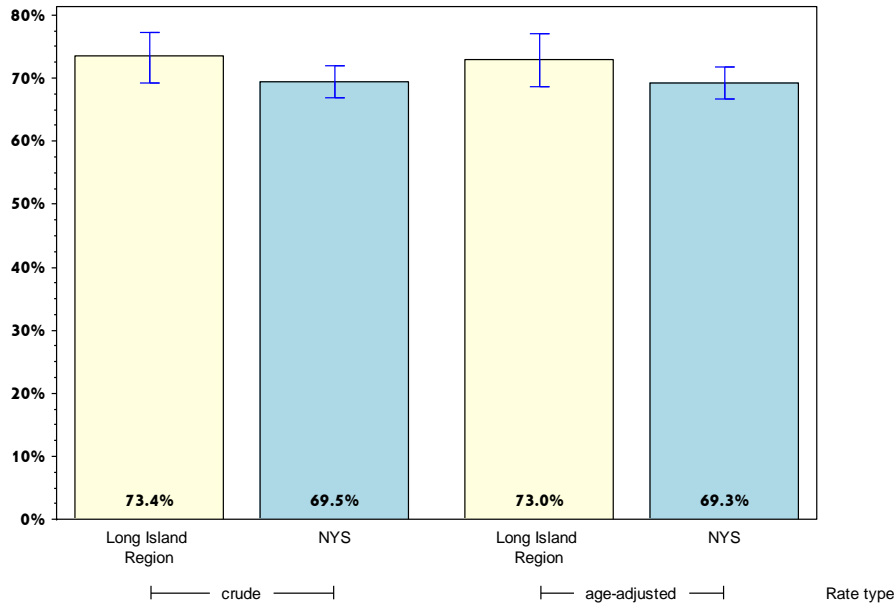
& Percent is age adjusted to the 2000 United States Population.

[^] Highly variable rate (confidence interval with a half-width greater than 10).

Long Island

Improve Health Status and Reduce Health Disparities

Percentage of adults who had a dentist visit within the past year



	Long Island				Statewide			
	Est. # of Adults	Percent	Lower 95% limit	Upper 95% limit	Est. # of Adults	Percent	Lower 95% limit	Upper 95% limit
Total	1,460,683	73.4	69.3	77.2	9,774,786	69.5	66.9	72.0
Age								
18-24	177,285	79.0 [^]	61.5	89.9	1,100,494	62.2 [^]	51.0	72.2
25-34	155,244	58.8 [^]	46.5	70.1	1,624,123	65.1	57.7	71.8
35-44	255,037	77.1 [^]	65.2	85.8	1,687,707	71.9	65.2	77.8
45-64	534,511	73.0	65.9	79.1	3,421,923	72.6	69.3	75.7
65+	304,586	78.6	72.4	83.6	1,743,883	69.8	66.0	73.4
Race								
White, NH	1,089,568	75.4	70.8	79.5	6,152,109	72.4	70.1	74.6
Black, NH	72,038	70.9 [^]	53.1	83.9	1,309,282	66.6	57.4	74.7
Hispanic	186,562	65.5 [^]	53.1	76.0	1,435,933	62.9	55.3	70.0
Other, NH		#			877,462	66.5 [^]	52.1	78.4
Sex								
Male	659,509	71.0	64.9	76.4	4,591,800	67.3	63.4	71.1
Female	801,174	75.6	69.7	80.7	5,182,986	71.6	68.1	74.8
Age-adjusted^{&}		73.0	68.6	77.0		69.3	66.6	71.8

& Percent is age adjusted to the 2000 United States Population.

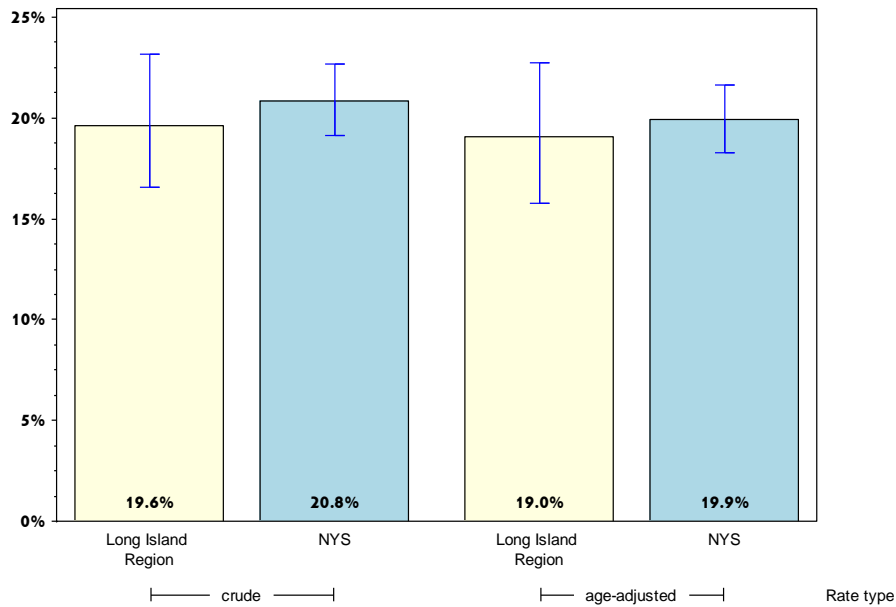
Rates with <10 in the numerator or <50 in the denominator are suppressed.

[^] Highly variable rate (confidence interval with a half-width greater than 10).

Long Island

Improve Health Status and Reduce Health Disparities

Percentage of adults living with a disability*



	Long Island				Statewide			
	Est. # of Adults	Percent	Lower 95% limit	Upper 95% limit	Est. # of Adults	Percent	Lower 95% limit	Upper 95% limit
Total	420,175	19.6	16.6	23.1	3,111,131	20.8	19.1	22.7
Age								
18-24	#				119,872	6.1	4.3	8.5
25-34	60,114	19.6 [^]	10.3	33.9	426,647	16.0	10.8	23.2
35-44	49,244	14.3	8.4	23.3	294,471	12.2	9.7	15.3
45-64	136,933	18.0	13.5	23.6	1,195,176	24.2	21.6	27.1
65+	148,319	35.2	29.0	42.0	989,611	36.8	33.1	40.6
Race								
White, NH	369,645	24.1	20.2	28.6	2,187,495	24.4	22.4	26.6
Black, NH	12,278	10.5 [^]	4.7	21.6	332,469	15.8	11.9	20.7
Hispanic	23,634	7.3	4.0	13.1	420,342	17.0	12.7	22.5
Other, NH	#				170,824	12.3	7.7	19.1
Sex								
Male	195,635	19.0	14.4	24.7	1,349,486	18.9	16.3	21.9
Female	224,540	20.2	16.3	24.7	1,761,645	22.6	20.4	24.9
Age-adjusted^{&}		19.0	15.8	22.8		19.9	18.3	21.6

* Limited activities (physical, mental, or emotional problems); need of special equipment (e.g. cane, wheel chair).

& Percent is age adjusted to the 2000 United States Population.

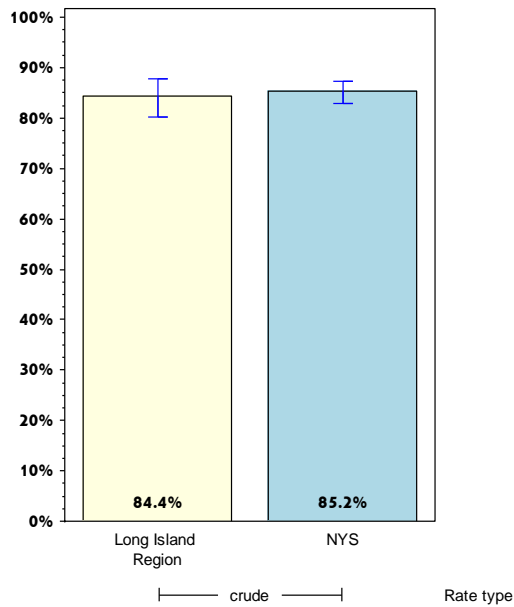
Rates with <10 in the numerator or <50 in the denominator are suppressed.

[^] Highly variable rate (confidence interval with a half-width greater than 10).

Long Island

Improve Health Status and Reduce Health Disparities

Percentage of adults aged 18-64 years with healthcare coverage



	Long Island				Statewide			
	Est. # of Adults	Percent	Lower 95% limit	Upper 95% limit	Est. # of Adults	Percent	Lower 95% limit	Upper 95% limit
Total	1,428,096	84.4	80.3	87.8	10,275,389	85.2	82.8	87.3
Age⁺								
18-24								
25-34								
35-44								
45-64								
65+								
Race								
White, NH	1,049,985	91.4	87.0	94.5	6,192,415	90.1	88.8	91.3
Black, NH	93,340	88.0 [^]	77.7	94.0	1,606,586	87.9	82.0	92.1
Hispanic	150,559	52.5 [^]	40.8	63.8	1,626,540	73.2	66.2	79.2
Other, NH		#			849,849	74.5 [^]	56.8	86.6
Sex								
Male	664,023	80.8	74.0	86.1	4,924,290	83.2	79.9	86.0
Female	764,073	87.8	82.5	91.6	5,351,099	87.2	83.4	90.2
Age-adjusted^{+,&}								

& Percent is age adjusted to the 2000 United States Population.

+ Age-adjusted and age specific percent not generated for health indicators with age range limits.

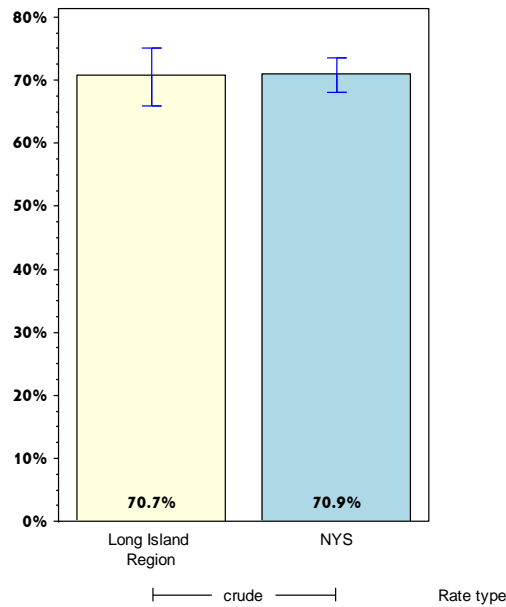
Rates with <10 in the numerator or <50 in the denominator are suppressed.

[^] Highly variable rate (confidence interval with a half-width greater than 10).

Long Island

Improve Health Status and Reduce Health Disparities

Percentage of adults aged 18-64 years who saw a doctor for a routine checkup within the last year



	Long Island				Statewide			
	Est. # of Adults	Percent	Lower 95% limit	Upper 95% limit	Est. # of Adults	Percent	Lower 95% limit	Upper 95% limit
Total	1,197,352	70.7	65.8	75.1	8,622,736	70.9	68.1	73.5
Age⁺								
18-24								
25-34								
35-44								
45-64								
65+								
Race								
White, NH	818,488	71.2	65.3	76.6	4,721,851	68.7	65.8	71.4
Black, NH	94,927	89.5 [^]	75.6	96.0	1,477,782	80.8	73.1	86.6
Hispanic	170,952	59.6 [^]	47.5	70.6	1,583,308	71.1	63.6	77.6
Other, NH		#			839,795	68.4 [^]	53.1	80.5
Sex								
Male	569,063	68.2	61.0	74.6	3,938,722	65.6	61.4	69.6
Female	628,289	73.1	66.3	79.1	4,684,014	76.0	72.3	79.4
Age-adjusted^{+,&}								

& Percent is age adjusted to the 2000 United States Population.

+ Age-adjusted and age specific percent not generated for health indicators with age range limits.

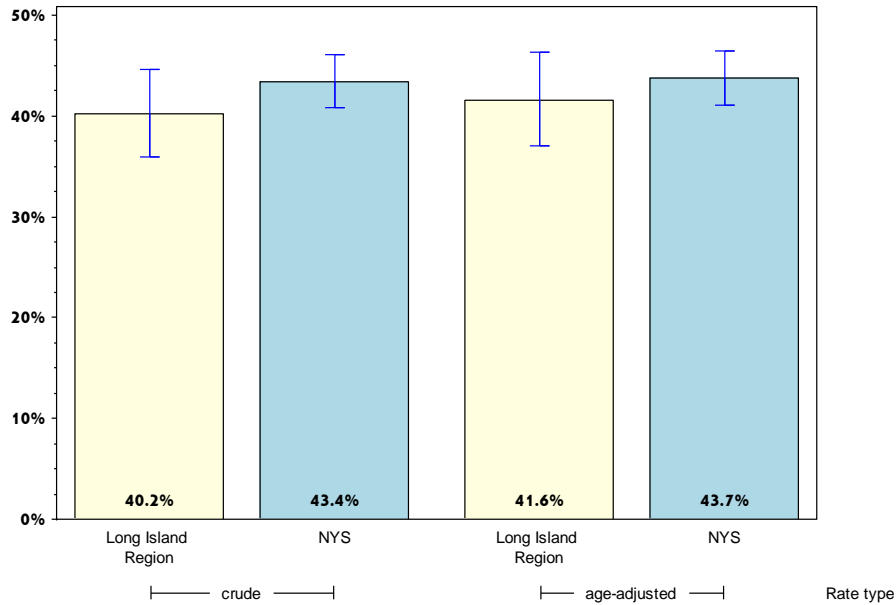
Rates with <10 in the numerator or <50 in the denominator are suppressed.

[^] Highly variable rate (confidence interval with a half-width greater than 10).

Long Island

Improve Health Status and Reduce Health Disparities

Percentage of adults experiencing housing insecurity in the past 12 months*



	Long Island				Statewide			
	Est. # of Adults	Percent	Lower 95% limit	Upper 95% limit	Est. # of Adults	Percent	Lower 95% limit	Upper 95% limit
Total	757,862	40.2	36.0	44.6	5,967,540	43.4	40.8	46.1
Age								
18-24	#	#			487,620	30.7 [^]	21.3	42.0
25-34	138,830	54.1 [^]	41.7	66.1	1,403,277	57.7	50.8	64.3
35-44	173,289	53.0 [^]	42.3	63.5	1,180,494	50.7	43.4	57.9
45-64	300,115	40.8	34.0	47.9	2,100,265	44.9	41.4	48.4
65+	84,370	22.9	17.4	29.6	688,870	27.8	23.8	32.1
Race								
White, NH	509,658	37.0	32.2	42.0	3,030,019	36.7	34.3	39.2
Black, NH	52,726	54.6 [^]	38.4	69.9	1,078,432	55.5	46.2	64.3
Hispanic	147,713	56.3 [^]	44.6	67.3	1,268,822	57.3	49.7	64.6
Other, NH	#	#			590,266	44.6 [^]	31.2	58.9
Sex								
Male	314,081	36.0	29.8	42.7	2,630,128	40.1	36.1	44.2
Female	443,781	43.9	38.2	49.7	3,337,412	46.5	43.0	50.0
Age-adjusted^{&}		41.6	37.0	46.3		43.7	41.0	46.5

* Worried or stressed about having enough money to pay for rent or mortgage.

& Percent is age adjusted to the 2000 United States Population.

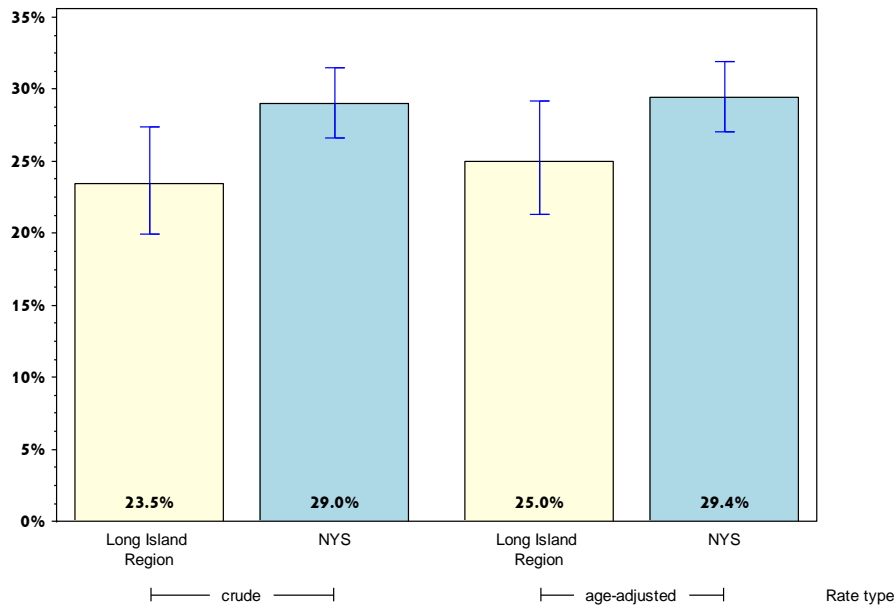
Rates with <10 in the numerator or <50 in the denominator are suppressed.

[^] Highly variable rate (confidence interval with a half-width greater than 10).

Long Island

Improve Health Status and Reduce Health Disparities

Percentage of adults experiencing food insecurity in the past 12 months*



	Long Island				Statewide			
	Est. # of Adults	Percent	Lower 95% limit	Upper 95% limit	Est. # of Adults	Percent	Lower 95% limit	Upper 95% limit
Total	482,775	23.5	20.0	27.3	4,211,702	29.0	26.6	31.5
Age								
18-24	47,487	20.5 [^]	9.7	38.3	339,128	17.9	13.5	23.3
25-34	121,802	42.5 [^]	31.4	54.4	1,154,171	44.8	37.7	52.1
35-44	100,396	29.6 [^]	21.1	39.6	786,490	33.0	26.3	40.4
45-64	165,566	22.2	16.8	28.7	1,464,969	30.3	26.9	33.9
65+	35,512	8.8	5.9	13.2	405,259	15.6	12.5	19.3
Race								
White, NH	314,730	21.2	17.2	25.8	1,998,541	22.9	20.6	25.4
Black, NH	38,312	36.9 [^]	22.4	54.1	765,155	37.2	29.3	45.7
Hispanic	110,837	36.1 [^]	26.4	47.0	1,031,787	43.4	36.2	50.8
Other, NH		#			416,220	30.4 [^]	20.2	42.9
Sex								
Male	187,861	19.5	15.0	25.1	1,903,904	27.4	23.6	31.5
Female	294,913	26.9	22.0	32.5	2,307,798	30.5	27.5	33.6
Age-adjusted^{&}		25.0	21.3	29.1		29.4	27.1	31.9

* Worried or stressed about having enough money to buy nutritious meals.

& Percent is age adjusted to the 2000 United States Population.

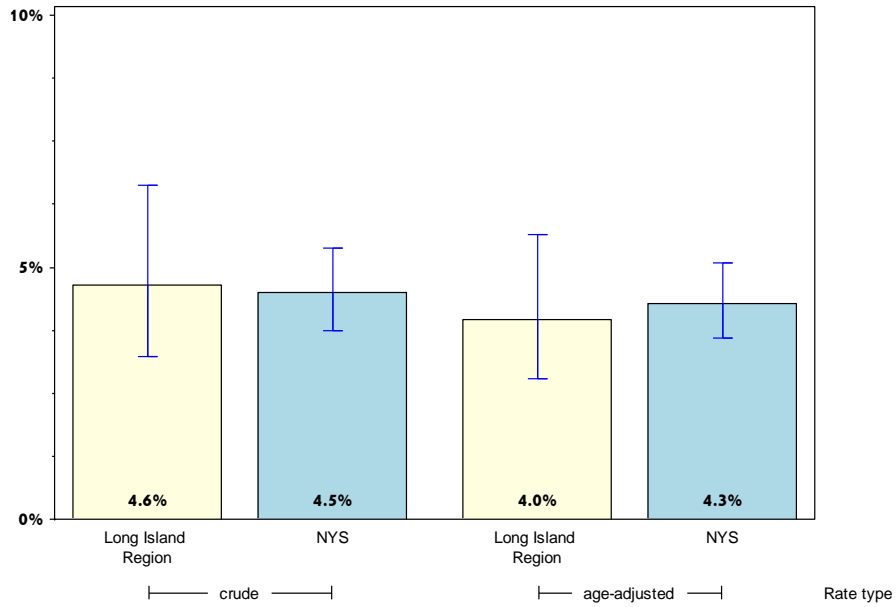
Rates with <10 in the numerator or <50 in the denominator are suppressed.

[^] Highly variable rate (confidence interval with a half-width greater than 10).

Long Island

Improve Health Status and Reduce Health Disparities

Percentage of adults with poor self-reported health



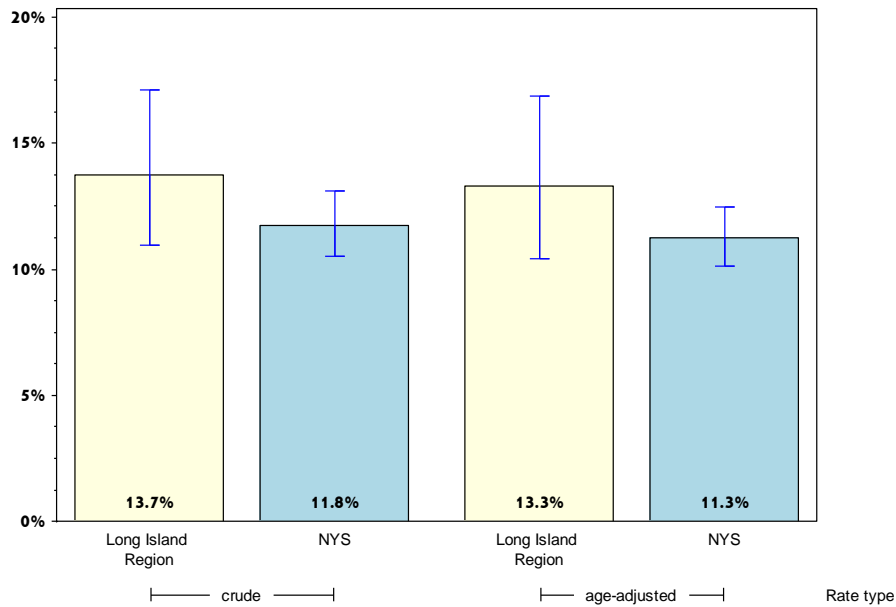
	Long Island				Statewide			
	Est. # of Adults	Percent	Lower 95% limit	Upper 95% limit	Est. # of Adults	Percent	Lower 95% limit	Upper 95% limit
Total	101,062	4.6	3.2	6.6	680,314	4.5	3.7	5.4
Age								
18-24	#				20,778	1.0	0.5	2.3
25-34	#				38,067	1.4	0.8	2.5
35-44	#				58,460	2.4	1.5	3.9
45-64	28,424	3.7	2.1	6.5	300,529	6.1	4.5	8.1
65+	51,349	12.0	7.0	19.9	248,637	9.1	6.9	12.0
Race								
White, NH	70,788	4.6	3.2	6.5	365,138	4.0	3.5	4.7
Black, NH	#				58,105	2.7	1.6	4.7
Hispanic	#				213,536	8.4	5.3	13.2
Other, NH	#				43,535	3.0	1.4	6.4
Sex								
Male	58,315	5.6	3.4	9.1	298,899	4.1	3.1	5.5
Female	42,746	3.8	2.3	6.1	381,415	4.8	3.9	6.0
Age-adjusted^{&}		4.0	2.8	5.7		4.3	3.6	5.1

& Percent is age adjusted to the 2000 United States Population.
 # Rates with <10 in the numerator or <50 in the denominator are suppressed.

Long Island

Improve Health Status and Reduce Health Disparities

Percentage of adults who report 14 or more days of poor physical health*



	Long Island				Statewide			
	Est. # of Adults	Percent	Lower 95% limit	Upper 95% limit	Est. # of Adults	Percent	Lower 95% limit	Upper 95% limit
Total	291,712	13.7	11.0	17.1	1,717,941	11.8	10.5	13.1
Age								
18-24	#				59,108	3.1	1.9	5.1
25-34	41,757	14.1 [^]	6.5	27.9	184,980	7.0	4.8	10.0
35-44	35,293	10.0	5.2	18.4	176,691	7.2	5.2	9.9
45-64	111,200	14.6	10.3	20.2	763,670	15.8	13.5	18.5
65+	85,172	20.3	14.5	27.8	491,091	19.1	16.1	22.5
Race								
White, NH	225,642	14.9	11.6	18.9	1,043,432	11.8	10.7	13.0
Black, NH	#				188,315	9.3	6.3	13.5
Hispanic	37,400	11.7 [^]	5.6	23.0	372,059	16.0	11.5	21.9
Other, NH	#				114,135	8.1	4.7	13.7
Sex								
Male	152,559	14.8	10.4	20.7	722,008	10.3	8.7	12.3
Female	139,153	12.8	9.7	16.6	995,933	13.0	11.3	14.9
Age-adjusted^{&}		13.3	10.4	16.9		11.3	10.1	12.5

* Out of the past 30 days.

& Percent is age adjusted to the 2000 United States Population.

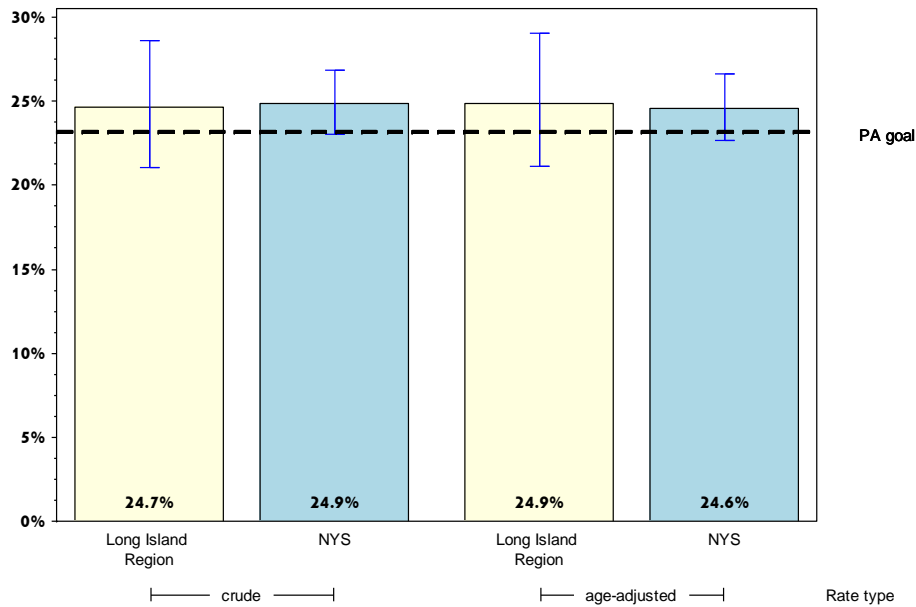
Rates with <10 in the numerator or <50 in the denominator are suppressed.

[^] Highly variable rate (confidence interval with a half-width greater than 10).

Long Island

Prevent Chronic Diseases

Percentage of adults who are obese*



	Long Island				Statewide			
	Est. # of Adults	Percent	Lower 95% limit	Upper 95% limit	Est. # of Adults	Percent	Lower 95% limit	Upper 95% limit
Total	502,810	24.7	21.1	28.6	3,527,077	24.9	23.0	26.9
Age								
18-24	67,744	26.9 [^]	14.1	45.3	318,556	17.8	11.7	26.0
25-34	73,767	25.2 [^]	16.5	36.3	509,101	20.8	16.8	25.4
35-44	84,756	26.6	18.8	36.2	573,976	24.7	20.0	30.1
45-64	171,592	24.3	18.6	30.9	1,452,755	30.5	27.5	33.7
65+	90,957	21.8	16.4	28.5	615,010	23.4	20.1	27.0
Race								
White, NH	358,037	24.4	20.3	29.1	2,139,878	25.0	23.2	26.9
Black, NH	47,582	40.3 [^]	26.5	56.0	638,079	30.7	24.2	38.1
Hispanic	80,384	27.6 [^]	18.4	39.2	622,984	28.0	21.8	35.1
Other, NH		#			126,136	9.6	6.3	14.4
Sex								
Male	295,305	28.9	23.5	35.0	1,782,686	25.3	22.5	28.3
Female	207,505	20.4	16.0	25.7	1,744,390	24.5	22.0	27.1
Age-adjusted^{&}		24.9	21.1	29.0		24.6	22.7	26.6

* Obesity defined as a Body Mass Index (BMI) ≥ 30 . BMI is calculated based on weight and height.

& Percent is age adjusted to the 2000 United States Population.

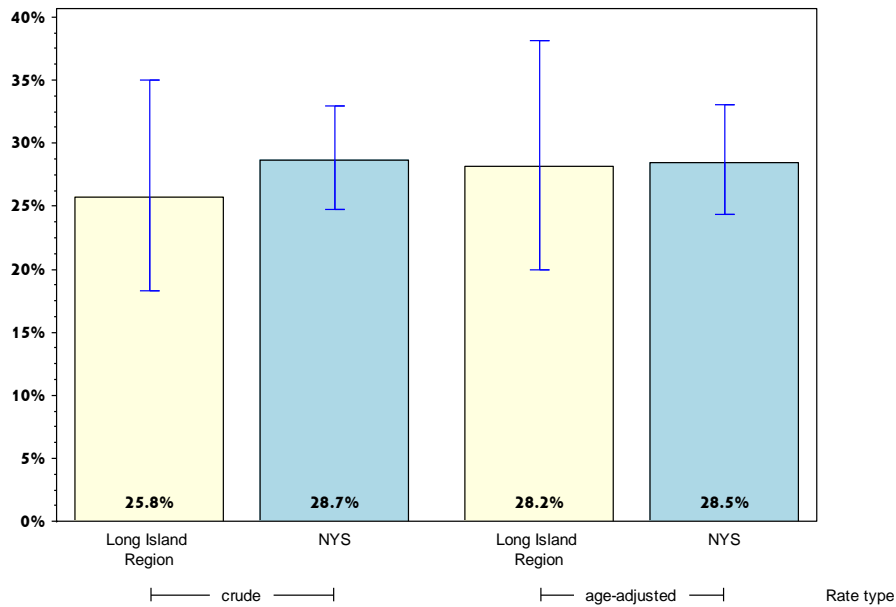
Rates with <10 in the numerator or <50 in the denominator are suppressed.

[^] Highly variable rate (confidence interval with a half-width greater than 10).

Long Island

Prevent Chronic Diseases

Percentage of adults with an annual household income less than \$25,000 who are obese*



	Long Island				Statewide			
	Est. # of Adults	Percent	Lower 95% limit	Upper 95% limit	Est. # of Adults	Percent	Lower 95% limit	Upper 95% limit
Total	85,661	25.8	18.3	35.0	1,029,079	28.7	24.7	33.0
Age								
18-24	#				88,578	21.3 [^]	10.0	39.7
25-34	#				177,054	26.6 [^]	17.0	39.0
35-44	#				165,333	28.8 [^]	19.5	40.3
45-64	#				386,736	34.8	28.0	42.1
65+	15,264	16.7 [^]	7.2	34.1	190,291	24.4	18.8	31.1
Race								
White, NH	38,362	22.4 [^]	14.7	32.6	500,787	30.3	25.6	35.4
Black, NH	#				165,021	25.3 [^]	16.7	36.3
Hispanic	#				287,948	30.1 [^]	21.1	41.0
Other, NH	#				75,322	23.1 [^]	12.4	39.0
Sex								
Male	43,366	27.6 [^]	17.4	40.7	386,764	23.8	18.1	30.5
Female	42,295	24.1 [^]	14.1	38.1	642,314	32.7	27.6	38.3
Age-adjusted^{&}		28.2	19.9	38.2		28.5	24.3	33.0

* Obesity defined as a Body Mass Index (BMI) ≥ 30 . BMI is calculated based on weight and height.

& Percent is age adjusted to the 2000 United States Population.

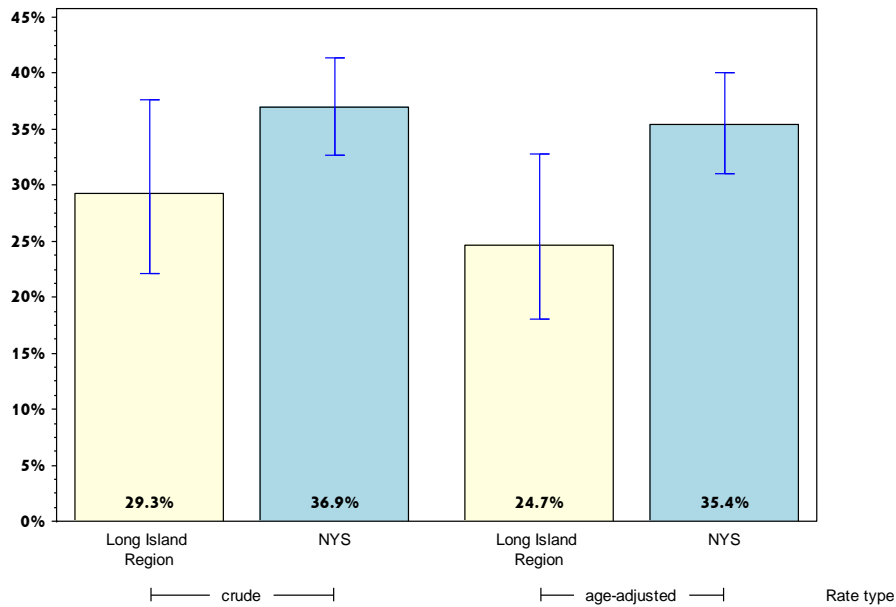
Rates with <10 in the numerator or <50 in the denominator are suppressed.

[^] Highly variable rate (confidence interval with a half-width greater than 10).

Long Island

Prevent Chronic Diseases

Percentage of adults living with a disability who are obese*



	Long Island				Statewide			
	Est. # of Adults	Percent	Lower 95% limit	Upper 95% limit	Est. # of Adults	Percent	Lower 95% limit	Upper 95% limit
Total	116,644	29.3	22.2	37.6	1,093,091	36.9	32.7	41.3
Age								
18-24	#				18,440	16.5 [^]	9.8	26.5
25-34	#				122,752	31.0 [^]	16.7	50.1
35-44	#				109,843	39.7 [^]	30.4	49.8
45-64	46,174	34.6 [^]	22.0	49.9	535,031	45.9	39.5	52.5
65+	46,628	32.7 [^]	22.9	44.4	283,502	30.3	25.2	36.1
Race								
White, NH	91,531	25.6	18.6	34.1	698,173	33.3	29.0	37.8
Black, NH	#				188,077	58.3 [^]	44.8	70.6
Hispanic	#				170,166	46.0 [^]	30.4	62.5
Other, NH	#				36,674	21.7 [^]	12.1	35.9
Sex								
Male	50,847	27.2 [^]	17.7	39.4	430,886	32.6	26.2	39.7
Female	65,796	31.1 [^]	21.5	42.6	662,205	40.4	35.1	45.8
Age-adjusted^{&}		24.7	18.0	32.8		35.4	31.0	40.0

* Obesity defined as a Body Mass Index (BMI) ≥ 30 . BMI is calculated based on weight and height. Limited activities (physical, mental, or emotional problems); need of special equipment (e.g. cane, wheel chair).

& Percent is age adjusted to the 2000 United States Population.

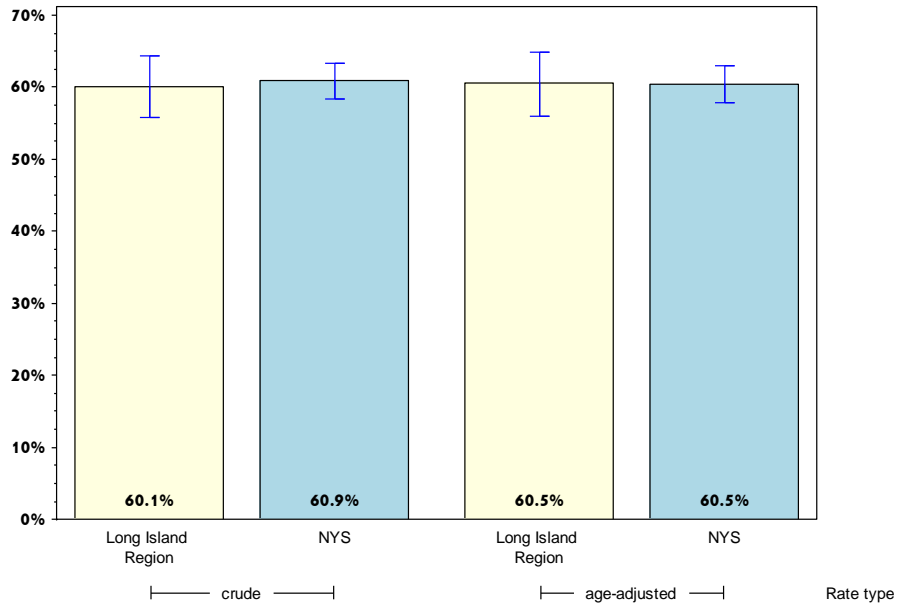
Rates with <10 in the numerator or <50 in the denominator are suppressed.

[^] Highly variable rate (confidence interval with a half-width greater than 10).

Long Island

Prevent Chronic Diseases

Percentage of adults overweight or obese*



	Long Island				Statewide			
	Est. # of Adults	Percent	Lower 95% limit	Upper 95% limit	Est. # of Adults	Percent	Lower 95% limit	Upper 95% limit
Total	1,225,597	60.1	55.7	64.3	8,631,360	60.9	58.4	63.3
Age								
18-24	93,102	37.0 [^]	22.7	53.9	656,771	36.6	28.8	45.2
25-34	166,696	56.8 [^]	44.0	68.9	1,528,245	62.4	55.9	68.4
35-44	217,298	68.2 [^]	56.9	77.7	1,362,541	58.6	50.8	66.0
45-64	469,777	66.4	59.6	72.5	3,335,153	70.0	66.8	73.1
65+	258,949	62.2	55.1	68.8	1,632,723	62.1	58.1	65.9
Race								
White, NH	867,655	59.2	54.3	64.0	5,260,942	61.5	59.3	63.5
Black, NH	91,366	77.5 [^]	60.9	88.3	1,520,031	73.1	63.8	80.7
Hispanic	189,986	65.3 [^]	52.9	75.9	1,346,413	60.5	52.9	67.5
Other, NH		#			503,974	38.4 [^]	28.1	49.9
Sex								
Male	720,149	70.4	63.8	76.3	4,736,847	67.1	63.2	70.8
Female	505,449	49.7	43.9	55.6	3,894,512	54.7	51.4	57.9
Age-adjusted^{&}		60.5	56.0	64.9		60.5	57.9	63.0

* Defined as a Body Mass Index (BMI) ≥ 25 . BMI is calculated based on weight and height.

& Percent is age adjusted to the 2000 United States Population.

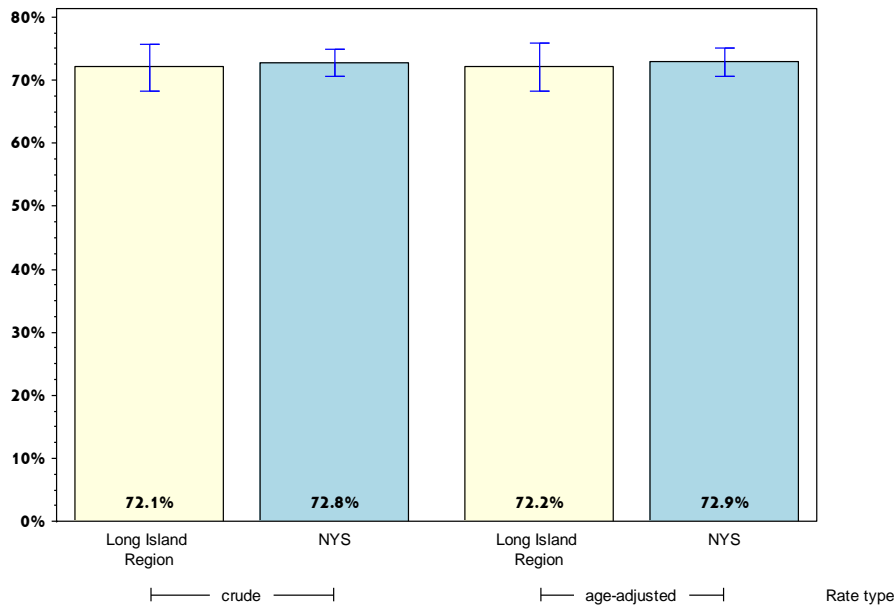
Rates with <10 in the numerator or <50 in the denominator are suppressed.

[^] Highly variable rate (confidence interval with a half-width greater than 10).

Long Island

Prevent Chronic Diseases

Percentage of adults who participated in leisure time physical activity in the past 30 days*



	Long Island				Statewide			
	Est. # of Adults	Percent	Lower 95% limit	Upper 95% limit	Est. # of Adults	Percent	Lower 95% limit	Upper 95% limit
Total	1,511,528	72.1	68.2	75.7	10,681,161	72.8	70.6	74.9
Age								
18-24	215,322	92.9 [^]	81.4	97.5	1,601,630	84.1	78.5	88.5
25-34	187,381	65.1 [^]	52.7	75.7	1,900,064	73.1	67.1	78.4
35-44	243,174	69.6 [^]	59.6	78.1	1,722,858	71.5	63.8	78.1
45-64	559,974	73.8	67.0	79.6	3,443,881	70.8	67.5	73.8
65+	270,352	64.5	57.3	71.0	1,840,519	69.5	66.1	72.7
Race								
White, NH	1,100,705	73.8	69.3	77.8	6,662,678	75.8	74.0	77.4
Black, NH	85,347	76.3 [^]	61.7	86.5	1,525,317	73.8	66.8	79.7
Hispanic	188,457	57.8 [^]	46.6	68.3	1,507,430	62.4	55.4	68.9
Other, NH		#			985,735	70.6 [^]	56.9	81.3
Sex								
Male	695,660	70.4	64.1	75.9	5,439,883	77.3	74.6	79.8
Female	815,868	73.6	68.6	78.0	5,241,278	68.6	65.3	71.7
Age-adjusted^{&}		72.2	68.2	75.8		72.9	70.5	75.1

* Any physical activities or exercises such as running or walking

& Percent is age adjusted to the 2000 United States Population.

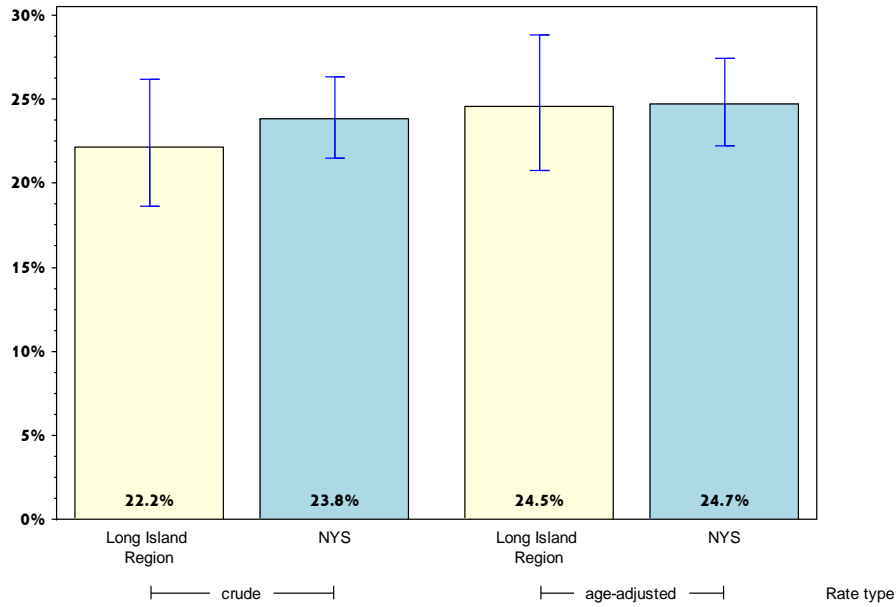
Rates with <10 in the numerator or <50 in the denominator are suppressed.

[^] Highly variable rate (confidence interval with a half-width greater than 10).

Long Island

Prevent Chronic Diseases

Percentage of adults who consume one or more sugary drinks daily*



	Long Island				Statewide			
	Est. # of Adults	Percent	Lower 95% limit	Upper 95% limit	Est. # of Adults	Percent	Lower 95% limit	Upper 95% limit
Total	448,821	22.2	18.6	26.2	3,402,766	23.8	21.5	26.3
Age								
18-24	72,355	31.6 [^]	18.7	48.1	670,630	36.9	28.0	46.7
25-34	92,168	33.3 [^]	22.9	45.7	733,289	28.9	22.5	36.4
35-44	139,602	40.7 [^]	30.6	51.7	769,136	32.4	25.4	40.3
45-64	89,477	12.2	8.2	17.9	839,390	17.6	15.0	20.5
65+	41,851	10.6	7.2	15.5	348,734	13.7	11.1	16.9
Race								
White, NH	287,431	19.7	16.0	24.1	1,754,487	20.4	18.3	22.8
Black, NH	25,797	25.0 [^]	12.7	43.1	671,592	33.6	25.4	43.0
Hispanic	100,972	33.1 [^]	23.4	44.4	700,337	29.8	23.7	36.8
Other, NH		#			276,350	20.4 [^]	10.6	35.5
Sex								
Male	279,956	30.0	24.2	36.5	1,782,648	26.0	22.5	29.8
Female	168,865	15.5	11.6	20.4	1,620,118	21.8	18.7	25.3
Age-adjusted^{&}		24.5	20.7	28.8		24.7	22.2	27.4

* Sugary drinks include regular soda, and sugar-sweetened drinks.

& Percent is age adjusted to the 2000 United States Population.

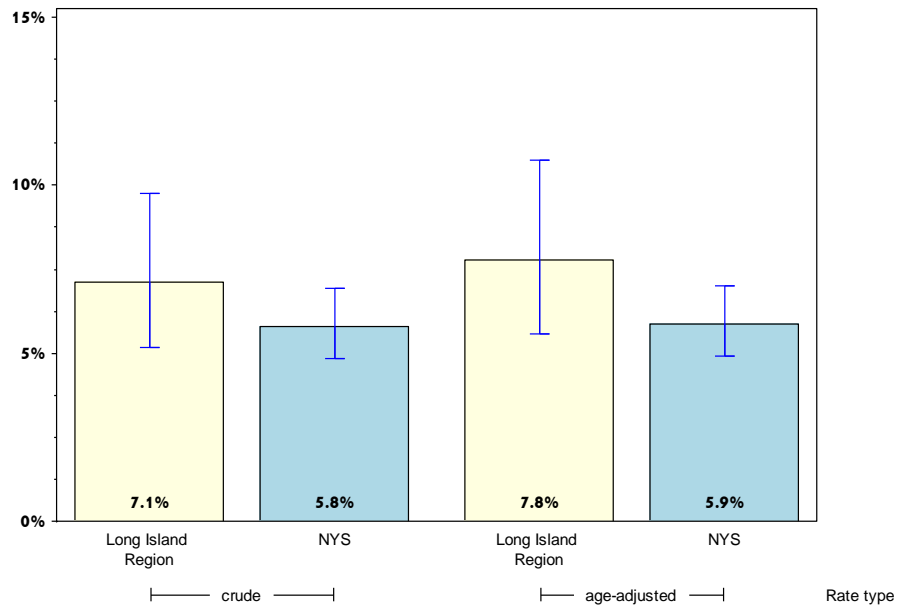
Rates with <10 in the numerator or <50 in the denominator are suppressed.

[^] Highly variable rate (confidence interval with a half-width greater than 10).

Long Island

Prevent Chronic Diseases

Percentage of adults who consume fast-food three or more times per week



	Long Island				Statewide			
	Est. # of Adults	Percent	Lower 95% limit	Upper 95% limit	Est. # of Adults	Percent	Lower 95% limit	Upper 95% limit
Total	143,752	7.1	5.2	9.7	817,815	5.8	4.8	6.9
Age								
18-24	29,879	13.0 [^]	6.7	23.8	172,464	9.7	6.9	13.6
25-34	39,257	14.2 [^]	7.0	26.7	252,437	10.0	6.9	14.2
35-44	23,640	6.9	3.2	14.1	106,397	4.5	3.2	6.3
45-64	41,108	5.6	3.1	10.0	234,582	5.0	3.3	7.4
65+	#	#	#	#	47,255	1.9	1.3	2.7
Race								
White, NH	81,206	5.6	3.8	8.1	433,016	5.1	4.4	5.9
Black, NH	#	#	#	#	122,943	6.2	4.1	9.3
Hispanic	36,097	11.8 [^]	5.4	23.7	219,779	9.6	5.6	16.0
Other, NH	#	#	#	#	42,077	3.2	1.8	5.5
Sex								
Male	117,141	12.5	8.9	17.4	560,514	8.2	6.6	10.3
Female	26,611	2.5	1.1	5.2	257,301	3.5	2.6	4.8
Age-adjusted^{&}		7.8	5.6	10.7		5.9	4.9	7.0

& Percent is age adjusted to the 2000 United States Population.

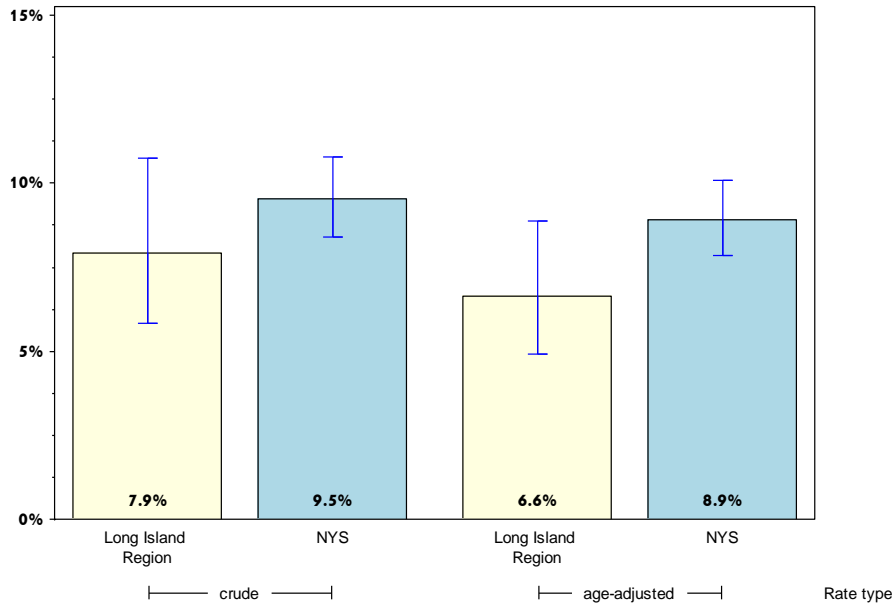
Rates with <10 in the numerator or <50 in the denominator are suppressed.

[^] Highly variable rate (confidence interval with a half-width greater than 10).

Long Island

Prevent Chronic Diseases

Percentage of adults with physician-diagnosed diabetes*



	Long Island				Statewide			
	Est. # of Adults	Percent	Lower 95% limit	Upper 95% limit	Est. # of Adults	Percent	Lower 95% limit	Upper 95% limit
Total	174,463	7.9	5.8	10.7	1,456,783	9.5	8.4	10.8
Age								
18-24	#				8,338	0.4	0.2	0.8
25-34	#				58,319	2.1	0.8	5.5
35-44	#				111,205	4.5	2.5	7.7
45-64	89,759	11.4	6.9	18.4	714,501	14.2	11.9	16.9
65+	76,689	17.8	12.8	24.2	525,500	19.1	16.3	22.2
Race								
White, NH	119,881	7.6	5.7	10.2	781,028	8.6	7.6	9.6
Black, NH	16,308	13.4 [^]	7.0	24.1	250,921	11.6	8.2	16.2
Hispanic	#				296,635	11.6	7.7	17.0
Other, NH	#				128,200	8.9	5.4	14.4
Sex								
Male	105,861	10.0	6.4	15.4	795,054	10.9	9.0	13.1
Female	68,602	6.0	4.2	8.5	661,729	8.3	7.0	9.7
Age-adjusted^{&}		6.6	4.9	8.9		8.9	7.9	10.1

* As diagnosed by a health professional.

& Percent is age adjusted to the 2000 United States Population.

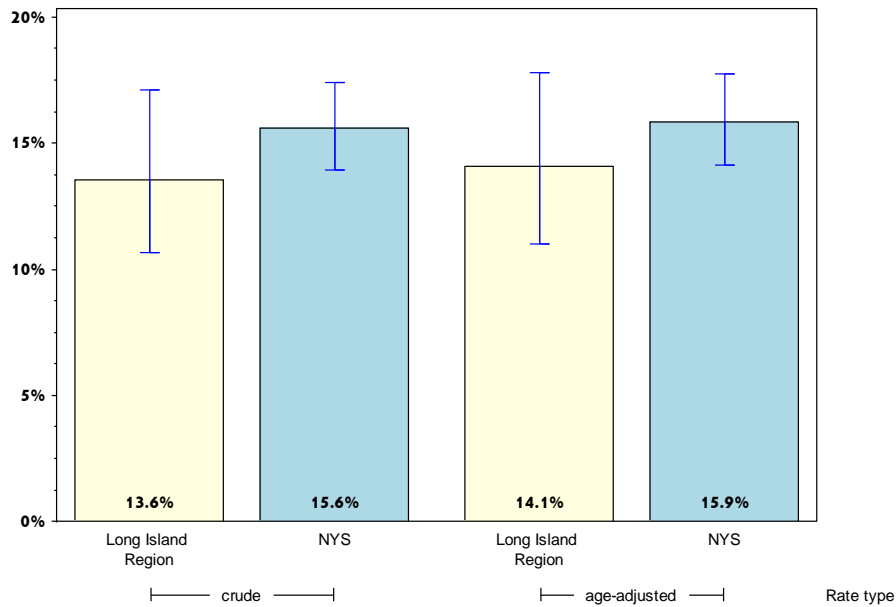
Rates with <10 in the numerator or <50 in the denominator are suppressed.

[^] Highly variable rate (confidence interval with a half-width greater than 10).

Long Island

Prevent Chronic Diseases

Percentage of adults who are current smokers



	Long Island				Statewide			
	Est. # of Adults	Percent	Lower 95% limit	Upper 95% limit	Est. # of Adults	Percent	Lower 95% limit	Upper 95% limit
Total	288,798	13.6	10.7	17.1	2,311,528	15.6	14.0	17.4
Age								
18-24	54,787	22.2 [^]	10.3	41.5	254,033	13.0	9.8	17.0
25-34	58,388	19.6 [^]	11.4	31.5	524,783	19.7	14.3	26.7
35-44	47,383	13.6	8.4	21.4	427,187	17.6	13.3	23.0
45-64	93,027	12.2	8.4	17.4	937,977	19.2	16.7	22.1
65+	24,457	5.8	3.6	9.4	149,820	5.7	4.7	6.8
Race								
White, NH	228,884	15.1	11.4	19.6	1,598,923	18.1	16.0	20.3
Black, NH	#	#	#	#	314,837	15.0	10.0	21.7
Hispanic	34,669	10.5	6.1	17.5	303,908	12.4	8.8	17.1
Other, NH	#	#	#	#	93,860	6.7	4.3	10.3
Sex								
Male	168,036	16.5	11.9	22.5	1,331,531	18.8	15.9	22.1
Female	120,763	10.8	7.6	15.3	979,997	12.7	11.1	14.4
Age-adjusted^{&}		14.1	11.0	17.8		15.9	14.1	17.7

& Percent is age adjusted to the 2000 United States Population.

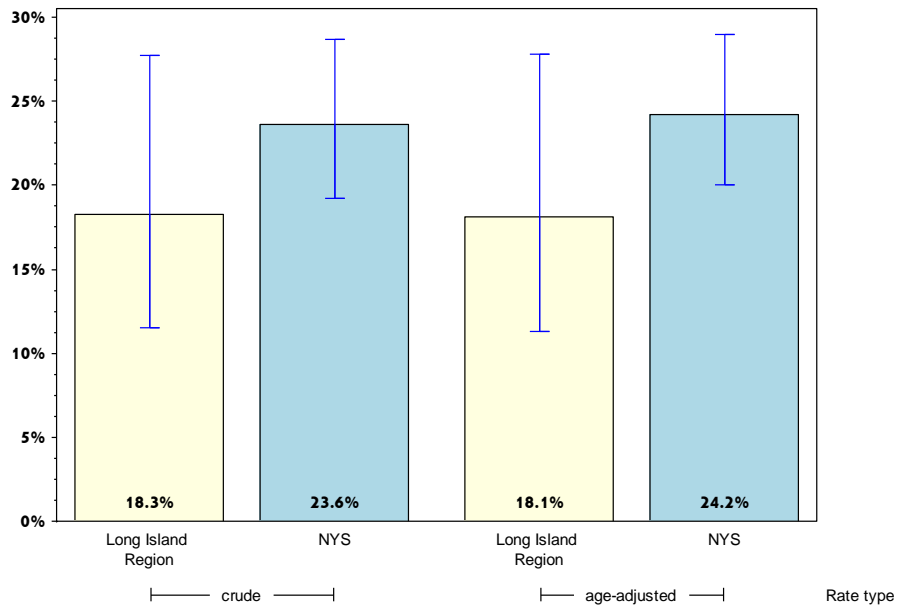
Rates with <10 in the numerator or <50 in the denominator are suppressed.

[^] Highly variable rate (confidence interval with a half-width greater than 10).

Long Island

Prevent Chronic Diseases

Percentage of adults with annual household income less than \$25,000 who are current smokers



	Long Island				Statewide			
	Est. # of Adults	Percent	Lower 95% limit	Upper 95% limit	Est. # of Adults	Percent	Lower 95% limit	Upper 95% limit
Total	67,235	18.3	11.6	27.7	910,061	23.6	19.2	28.7
Age								
18-24	#				84,893	16.1	9.8	25.4
25-34	#				254,993	32.7 [^]	18.8	50.6
35-44	#				141,275	24.5 [^]	15.5	36.5
45-64	#				354,621	31.5	24.7	39.1
65+	#				63,044	7.9	5.6	11.0
Race								
White, NH	39,688	21.0 [^]	11.4	35.5	562,213	32.6	25.7	40.3
Black, NH	#				187,054	28.1 [^]	17.8	41.4
Hispanic	#				119,918	11.3	7.1	17.6
Other, NH	#				40,876	10.0	5.0	19.2
Sex								
Male	45,059	25.7 [^]	14.0	42.3	507,987	30.0	21.9	39.5
Female	22,176	11.5	6.6	19.3	402,073	18.6	14.7	23.3
Age-adjusted^{&}		18.1	11.3	27.8		24.2	20.0	28.9

& Percent is age adjusted to the 2000 United States Population.

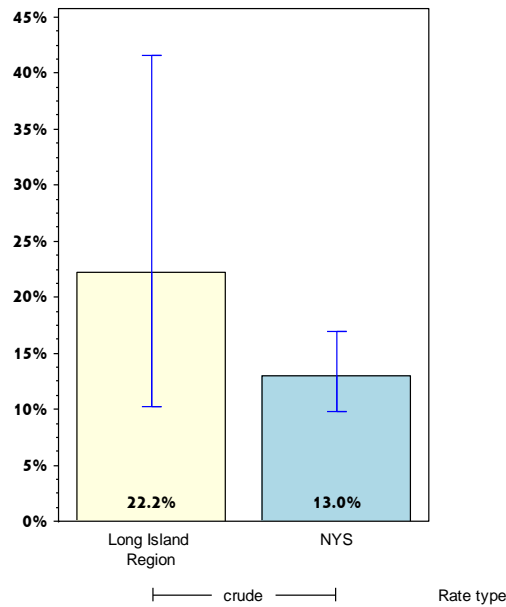
Rates with <10 in the numerator or <50 in the denominator are suppressed.

[^] Highly variable rate (confidence interval with a half-width greater than 10).

Long Island

Prevent Chronic Diseases

Percentage of adults aged 18-24 years who are current smokers



	Long Island				Statewide			
	Est. # of Adults	Percent	Lower 95% limit	Upper 95% limit	Est. # of Adults	Percent	Lower 95% limit	Upper 95% limit
Total	54,787	22.2 [^]	10.3	41.5	254,033	13.0	9.8	17.0
Age⁺								
18-24								
25-34								
35-44								
45-64								
65+								
Race								
White, NH	#				188,030	19.4	14.8	25.2
Black, NH	#				21,086	6.1	2.8	13.1
Hispanic	#				33,121	9.8 [^]	4.6	19.9
Other, NH	#				11,797	3.8	1.4	10.0
Sex								
Male	#				153,298	15.5	10.7	21.8
Female	#				100,736	10.4	6.6	16.0
Age-adjusted^{+,&}								

& Percent is age adjusted to the 2000 United States Population.

+ Age-adjusted and age specific percent not generated for health indicators with age range limits.

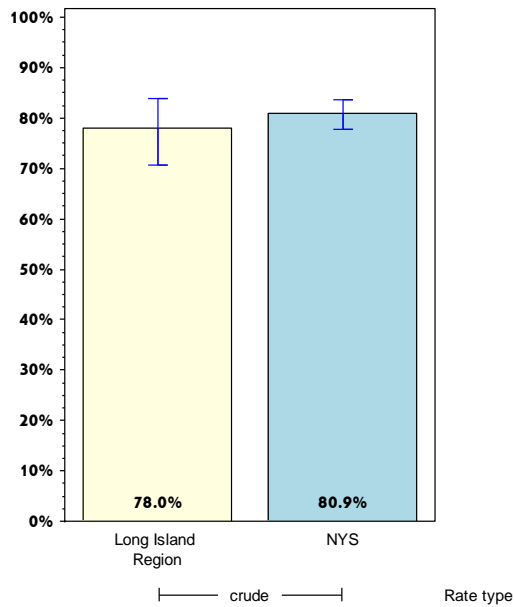
Rates with <10 in the numerator or <50 in the denominator are suppressed.

[^] Highly variable rate (confidence interval with a half-width greater than 10).

Long Island

Prevent Chronic Diseases

Percentage of women aged 50-74 years receiving breast cancer screening based on recent guidelines*



	Long Island				Statewide			
	Est. # of Adults	Percent	Lower 95% limit	Upper 95% limit	Est. # of Adults	Percent	Lower 95% limit	Upper 95% limit
Total	330,752	78.0	70.6	83.9	2,225,651	80.9	77.7	83.7
Age⁺								
18-24								
25-34								
35-44								
45-64								
65+								
Race								
White, NH	282,359	80.0	72.8	85.7	1,417,374	79.0	75.9	81.8
Black, NH		#			347,690	87.0 [^]	73.4	94.3
Hispanic		#			309,667	83.8 [^]	70.9	91.6
Other, NH		#			150,920	79.7 [^]	61.2	90.7
Sex								
Male		#				#		
Female	330,752	78.0	70.6	83.9	2,225,651	80.9	77.7	83.7
Age-adjusted^{+,&}								

* Mammogram within past 2 years.

& Percent is age adjusted to the 2000 United States Population.

+ Age-adjusted and age specific percent not generated for health indicators with age range limits.

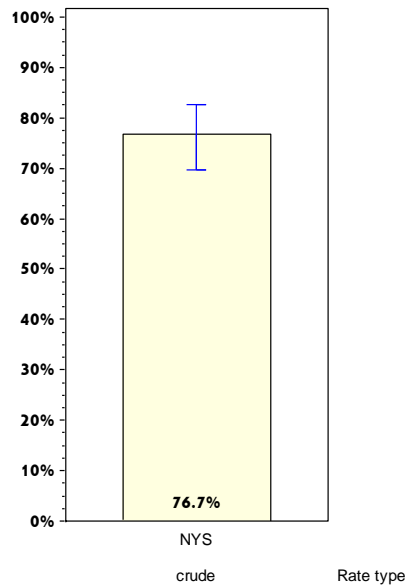
Rates with <10 in the numerator or <50 in the denominator are suppressed.

[^] Highly variable rate (confidence interval with a half-width greater than 10).

Long Island

Prevent Chronic Diseases

Percentage of women aged 50-74 years with annual household income of less than \$25,000 receiving breast cancer screening based on recent guidelines*



	Long Island				Statewide			
	Est. # of Adults	Percent	Lower 95% limit	Upper 95% limit	Est. # of Adults	Percent	Lower 95% limit	Upper 95% limit
Total		#			554,880	76.7	69.6	82.6
Age⁺								
18-24								
25-34								
35-44								
45-64								
65+								
Race								
White, NH		#			232,138	66.5	57.9	74.1
Black, NH		#			139,053	95.4	89.6	98.1
Hispanic		#			134,524	82.0 [^]	61.8	92.7
Other, NH		#			49,165	76.3 [^]	44.1	93.0
Sex								
Male		#				#		
Female		#			554,880	76.7	69.6	82.6
Age-adjusted^{+,&}								

* Mammogram within past 2 years.

& Percent is age adjusted to the 2000 United States Population.

+ Age-adjusted and age specific percent not generated for health indicators with age range limits.

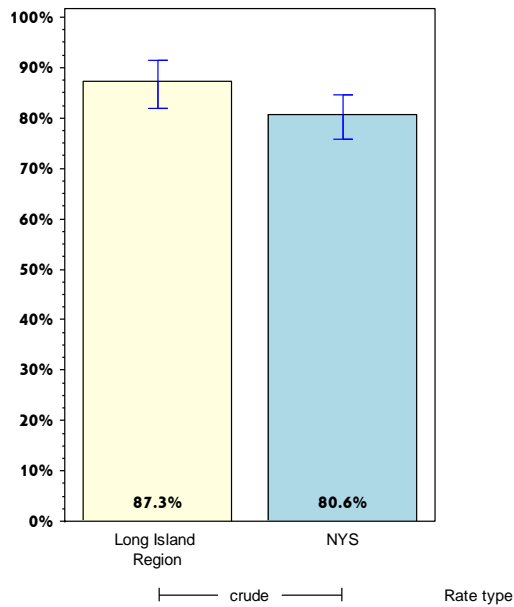
Rates with <10 in the numerator or <50 in the denominator are suppressed.

[^] Highly variable rate (confidence interval with a half-width greater than 10).

Long Island

Prevent Chronic Diseases

Percentage of women aged 21-65 years receiving cervical cancer screening based on recent guidelines*



	Long Island				Statewide			
	Est. # of Adults	Percent	Lower 95% limit	Upper 95% limit	Est. # of Adults	Percent	Lower 95% limit	Upper 95% limit
Total	700,007	87.3	81.9	91.3	4,362,995	80.6	75.7	84.7
Age⁺								
18-24								
25-34								
35-44								
45-64								
65+								
Race								
White, NH	508,366	87.7	81.0	92.3	2,640,598	84.5	82.2	86.6
Black, NH	#	#	#	#	711,417	84.5 [^]	72.6	91.8
Hispanic	81,367	81.5 [^]	60.2	92.8	684,308	78.0 [^]	66.2	86.6
Other, NH	#	#	#	#	326,671	57.1 [^]	31.0	79.8
Sex								
Male	#	#	#	#	#	#	#	#
Female	700,007	87.3	81.9	91.3	4,362,995	80.6	75.7	84.7
Age-adjusted^{+,&}								

* Pap test within past 3 years.

& Percent is age adjusted to the 2000 United States Population.

+ Age-adjusted and age specific percent not generated for health indicators with age range limits.

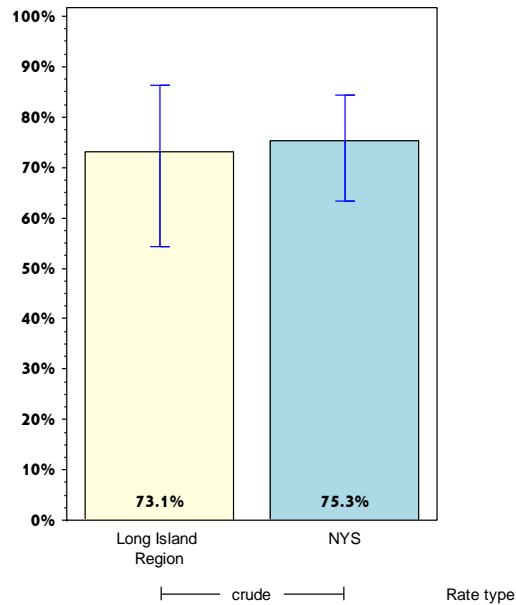
Rates with <10 in the numerator or <50 in the denominator are suppressed.

[^] Highly variable rate (confidence interval with a half-width greater than 10).

Long Island

Prevent Chronic Diseases

Percentage of women aged 21-65 years with annual household income of less than \$25,000 receiving cervical cancer screening based on recent guidelines*



	Long Island				Statewide			
	Est. # of Adults	Percent	Lower 95% limit	Upper 95% limit	Est. # of Adults	Percent	Lower 95% limit	Upper 95% limit
Total	77,186	73.1 [^]	54.2	86.2	1,068,153	75.3 [^]	63.2	84.4
Age⁺								
18-24								
25-34								
35-44								
45-64								
65+								
Race								
White, NH		#			433,489	74.8	68.6	80.2
Black, NH		#			283,693	93.7	87.8	96.8
Hispanic		#			292,551	77.4 [^]	61.6	88.0
Other, NH		#			58,419	36.7 [^]	8.5	78.5
Sex								
Male		#				#		
Female	77,186	73.1 [^]	54.2	86.2	1,068,153	75.3 [^]	63.2	84.4
Age-adjusted^{+,&}								

* Pap test within past 3 years.

& Percent is age adjusted to the 2000 United States Population.

+ Age-adjusted and age specific percent not generated for health indicators with age range limits.

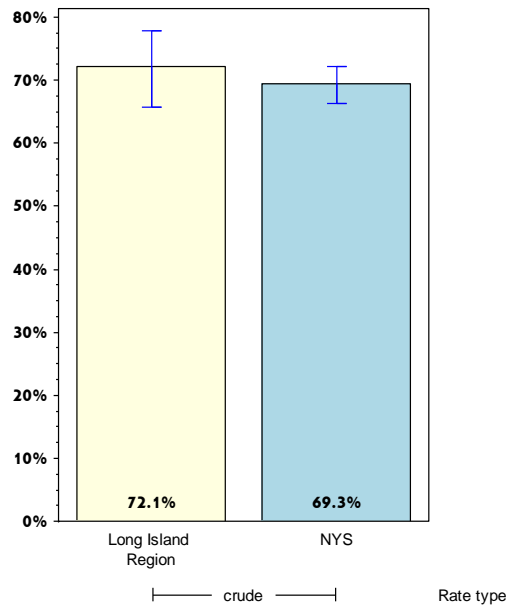
Rates with <10 in the numerator or <50 in the denominator are suppressed.

[^] Highly variable rate (confidence interval with a half-width greater than 10).

Long Island

Prevent Chronic Diseases

Percentage of adults aged 50-75 years receiving colorectal cancer screening based on recent guidelines*



	Long Island				Statewide			
	Est. # of Adults	Percent	Lower 95% limit	Upper 95% limit	Est. # of Adults	Percent	Lower 95% limit	Upper 95% limit
Total	553,897	72.1	65.7	77.8	3,471,945	69.3	66.3	72.2
Age⁺								
18-24								
25-34								
35-44								
45-64								
65+								
Race								
White, NH	424,223	70.0	62.7	76.4	2,335,990	70.4	67.9	72.7
Black, NH		#			514,345	69.6 [^]	57.5	79.4
Hispanic		#			416,087	70.6 [^]	58.4	80.4
Other, NH		#			205,524	57.4 [^]	39.9	73.2
Sex								
Male	248,863	73.6 [^]	63.0	82.1	1,545,645	66.8	62.1	71.2
Female	305,034	71.0	62.7	78.0	1,926,301	71.5	67.5	75.2
Age-adjusted^{+,&}								

* Blood stool test within 1 year, or sigmoidoscopy within 5 years with blood stool test within 3 years, or colonoscopy within 10 years.

& Percent is age adjusted to the 2000 United States Population.

+ Age-adjusted and age specific percent not generated for health indicators with age range limits.

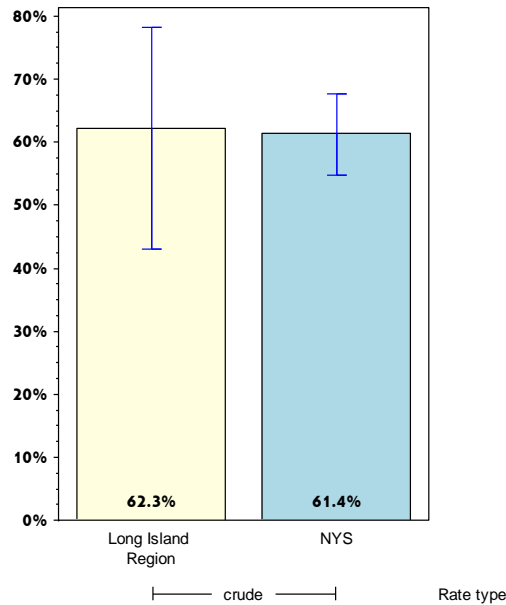
Rates with <10 in the numerator or <50 in the denominator are suppressed.

[^] Highly variable rate (confidence interval with a half-width greater than 10).

Long Island

Prevent Chronic Diseases

Percentage of adults aged 50-75 years with annual household income less than \$25,000 receiving colorectal cancer screening based on recent guidelines*



	Long Island				Statewide			
	Est. # of Adults	Percent	Lower 95% limit	Upper 95% limit	Est. # of Adults	Percent	Lower 95% limit	Upper 95% limit
Total	66,016	62.3 [^]	43.0	78.3	736,005	61.4	54.7	67.7
Age⁺								
18-24								
25-34								
35-44								
45-64								
65+								
Race								
White, NH	#				345,064	57.6	51.4	63.7
Black, NH	#				155,775	60.0 [^]	38.7	78.0
Hispanic	#				187,721	75.1 [^]	60.9	85.4
Other, NH	#				47,444	52.8 [^]	29.9	74.5
Sex								
Male	#				253,900	51.4 [^]	41.0	61.6
Female	#				482,104	68.5	60.2	75.7
Age-adjusted^{+,&}								

* Blood stool test within 1 year, or sigmoidoscopy within 5 years with blood stool test within 3 years, or colonoscopy within 10 years.

& Percent is age adjusted to the 2000 United States Population.

+ Age-adjusted and age specific percent not generated for health indicators with age range limits.

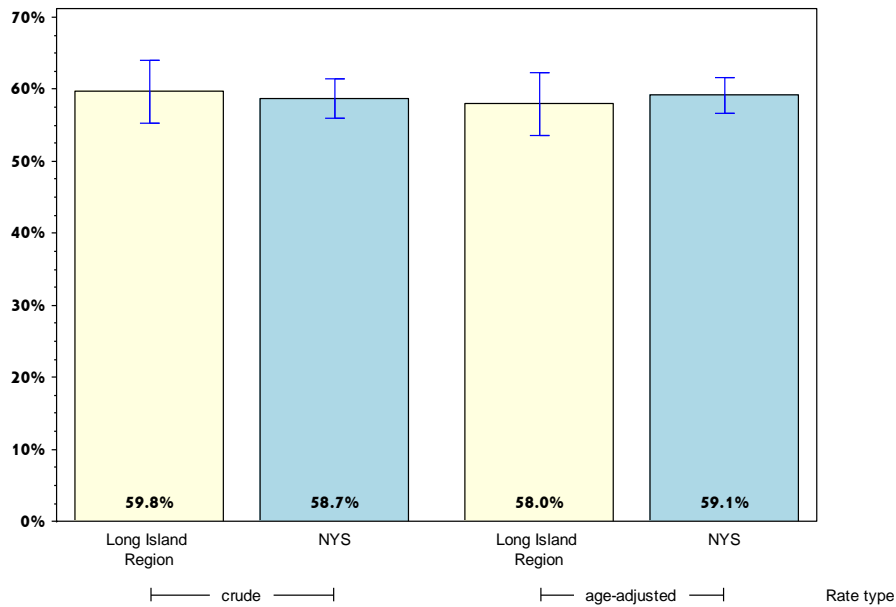
Rates with <10 in the numerator or <50 in the denominator are suppressed.

[^] Highly variable rate (confidence interval with a half-width greater than 10).

Long Island

Prevent Chronic Diseases

Percentage of adults who had a test for high blood sugar or diabetes within the past three years



	Long Island				Statewide			
	Est. # of Adults	Percent	Lower 95% limit	Upper 95% limit	Est. # of Adults	Percent	Lower 95% limit	Upper 95% limit
Total	1,148,249	59.8	55.3	64.1	7,849,939	58.7	56.0	61.5
Age								
18-24	66,230	29.2 [^]	16.4	46.4	503,420	26.8	20.2	34.6
25-34	144,614	50.2 [^]	38.0	62.3	1,337,915	51.0	44.1	57.9
35-44	202,234	57.6 [^]	47.2	67.4	1,475,455	63.3	56.2	69.9
45-64	436,029	66.6	59.4	73.1	2,822,324	68.0	64.3	71.4
65+	257,570	73.7	66.7	79.7	1,541,702	71.4	66.8	75.6
Race								
White, NH	869,483	64.2	59.1	68.9	4,823,563	61.0	58.6	63.4
Black, NH	75,839	73.3 [^]	55.6	85.8	1,240,630	65.1	55.4	73.7
Hispanic	127,243	39.9 [^]	29.7	51.1	1,203,330	53.5	46.1	60.8
Other, NH		#			582,416	44.7 [^]	31.9	58.2
Sex								
Male	525,164	58.9	52.0	65.5	3,534,063	56.3	52.1	60.4
Female	623,085	60.5	54.6	66.1	4,315,875	60.9	57.2	64.5
Age-adjusted^{&}		58.0	53.5	62.4		59.1	56.6	61.6

& Percent is age adjusted to the 2000 United States Population.

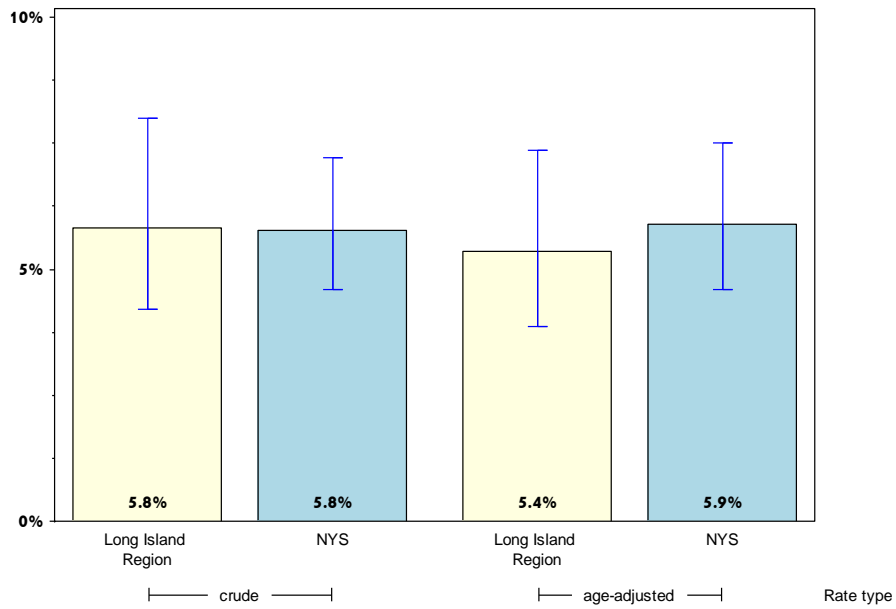
Rates with <10 in the numerator or <50 in the denominator are suppressed.

[^] Highly variable rate (confidence interval with a half-width greater than 10).

Long Island

Prevent Chronic Diseases

Percentage of adults with physician-diagnosed prediabetes



	Long Island				Statewide			
	Est. # of Adults	Percent	Lower 95% limit	Upper 95% limit	Est. # of Adults	Percent	Lower 95% limit	Upper 95% limit
Total	115,597	5.8	4.2	8.0	783,799	5.8	4.6	7.2
Age								
18-24	#				57,540	2.9	0.7	10.7
25-34	#				43,246	1.6	1.0	2.7
35-44	#				198,127	8.5	4.4	16.0
45-64	56,667	8.5	5.1	13.8	283,693	6.7	5.3	8.5
65+	24,058	7.1	4.3	11.3	171,261	7.8	6.2	9.9
Race								
White, NH	85,731	6.0	4.2	8.6	489,253	6.0	4.8	7.4
Black, NH	#				96,242	5.2	2.9	9.2
Hispanic	#				81,294	3.6	1.8	7.2
Other, NH	#				117,011	8.9 [^]	3.2	22.3
Sex								
Male	60,503	6.5	4.1	10.0	377,968	5.9	4.1	8.5
Female	55,094	5.3	3.3	8.2	405,832	5.6	4.3	7.3
Age-adjusted^{&}		5.4	3.9	7.4		5.9	4.6	7.5

[&] Percent is age adjusted to the 2000 United States Population.

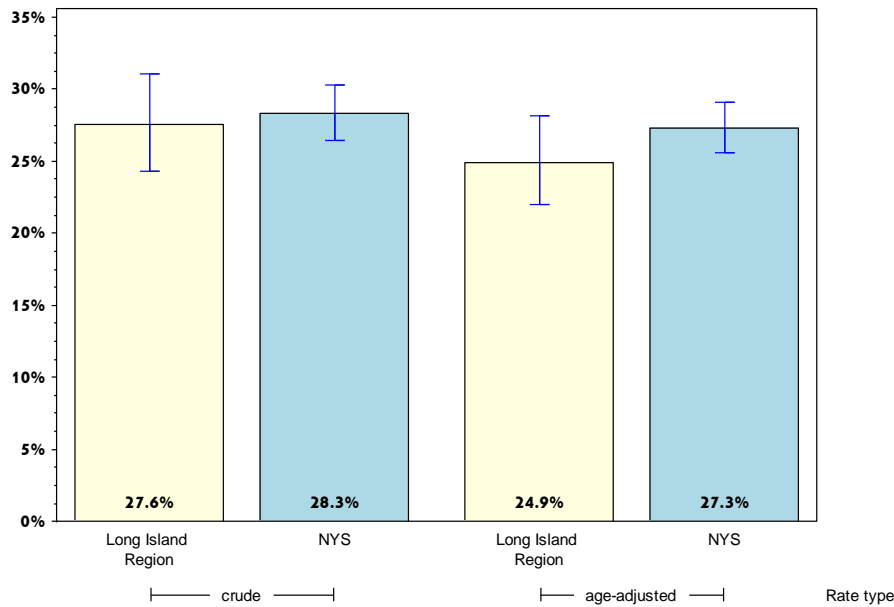
[#] Rates with <10 in the numerator or <50 in the denominator are suppressed.

[^] Highly variable rate (confidence interval with a half-width greater than 10).

Long Island

Prevent Chronic Diseases

Percentage of adults with physician-diagnosed high blood pressure



	Long Island				Statewide			
	Est. # of Adults	Percent	Lower 95% limit	Upper 95% limit	Est. # of Adults	Percent	Lower 95% limit	Upper 95% limit
Total	605,548	27.6	24.3	31.1	4,323,615	28.3	26.5	30.3
Age								
18-24	#	#			103,520	5.2	3.3	8.0
25-34	40,643	12.9	7.0	22.8	299,126	10.9	7.8	15.0
35-44	45,668	12.9	7.5	21.3	470,752	18.9	14.1	24.8
45-64	243,541	31.0	25.1	37.6	1,715,223	34.1	31.2	37.2
65+	250,102	58.3	51.2	64.9	1,654,516	60.4	56.5	64.2
Race								
White, NH	472,434	30.1	26.2	34.2	2,701,979	29.7	28.0	31.4
Black, NH	41,318	33.8 [^]	21.4	49.0	740,669	34.2	27.2	42.0
Hispanic	56,595	17.0	11.1	25.2	609,542	23.8	18.7	29.9
Other, NH	#	#			271,424	18.9	12.7	27.1
Sex								
Male	298,019	28.2	23.1	33.8	2,116,294	29.0	26.2	32.1
Female	307,529	27.0	22.9	31.5	2,207,320	27.7	25.3	30.2
Age-adjusted^{&}		24.9	22.0	28.1		27.3	25.6	29.1

& Percent is age adjusted to the 2000 United States Population.

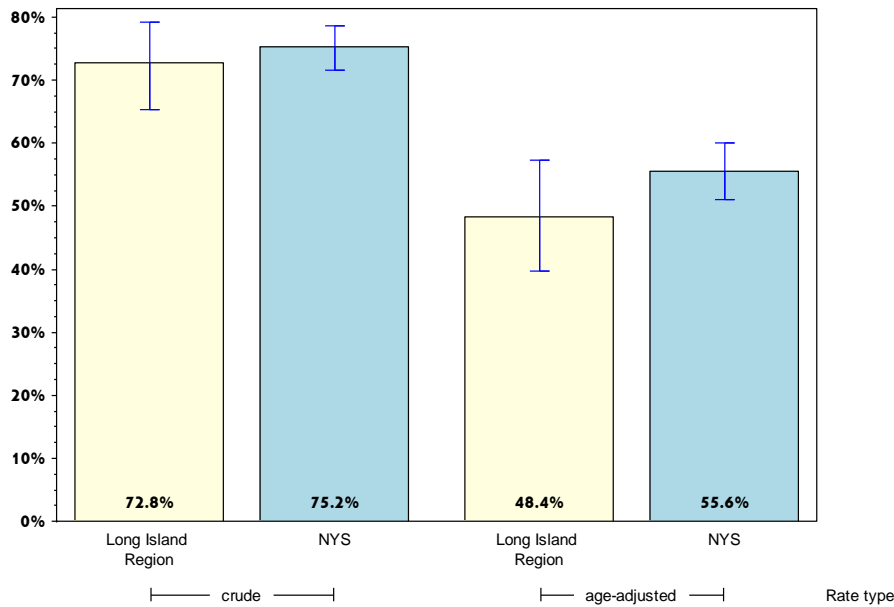
Rates with <10 in the numerator or <50 in the denominator are suppressed.

[^] Highly variable rate (confidence interval with a half-width greater than 10).

Long Island

Prevent Chronic Diseases

Percentage of adults with diagnosed high blood pressure taking high blood pressure medication



	Long Island				Statewide			
	Est. # of Adults	Percent	Lower 95% limit	Upper 95% limit	Est. # of Adults	Percent	Lower 95% limit	Upper 95% limit
Total	435,515	72.8	65.4	79.2	3,243,246	75.2	71.5	78.5
Age								
18-24	#	#			8,688	8.4	3.9	17.4
25-34	#	#			96,762	32.4 [^]	18.9	49.5
35-44	#	#			186,971	39.7 [^]	26.7	54.3
45-64	168,181	70.4 [^]	57.0	81.0	1,395,152	81.6	77.8	84.9
65+	231,957	93.8	89.4	96.4	1,497,501	90.8	86.9	93.6
Race								
White, NH	341,523	73.4	64.8	80.6	2,081,796	77.4	74.1	80.3
Black, NH	#	#			552,688	74.6 [^]	60.0	85.3
Hispanic	#	#			420,934	69.1 [^]	56.3	79.5
Other, NH	#	#			187,828	69.2 [^]	50.8	83.0
Sex								
Male	209,428	70.3 [^]	58.3	80.0	1,525,386	72.2	66.5	77.2
Female	226,087	75.3	66.1	82.7	1,717,859	78.1	73.2	82.4
Age-adjusted^{&}		48.4	39.6	57.2		55.6	51.1	60.0

& Percent is age adjusted to the 2000 United States Population.

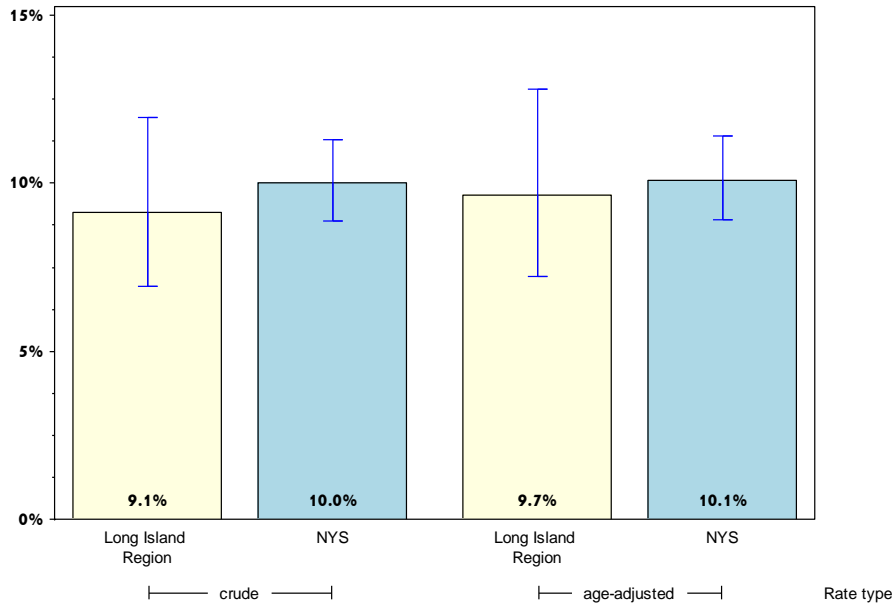
Rates with <10 in the numerator or <50 in the denominator are suppressed.

[^] Highly variable rate (confidence interval with a half-width greater than 10).

Long Island

Prevent Chronic Diseases

Percentage of adults with current asthma*



	Long Island				Statewide			
	Est. # of Adults	Percent	Lower 95% limit	Upper 95% limit	Est. # of Adults	Percent	Lower 95% limit	Upper 95% limit
Total	199,687	9.1	6.9	12.0	1,520,940	10.0	8.9	11.3
Age								
18-24	#				170,340	8.6	6.2	11.8
25-34	57,245	18.2 [^]	9.2	32.9	322,447	11.7	8.2	16.4
35-44	26,808	7.6	3.8	14.5	240,590	9.7	7.1	13.0
45-64	64,541	8.3	5.5	12.4	551,257	11.1	9.3	13.3
65+	32,787	7.7	5.2	11.2	222,952	8.1	6.5	10.1
Race								
White, NH	157,457	10.1	7.3	13.8	946,198	10.4	9.1	11.9
Black, NH	17,693	14.5 [^]	7.4	26.4	199,011	9.2	6.5	12.9
Hispanic	19,790	5.9	2.7	12.4	283,809	11.3	7.9	16.0
Other, NH	#				91,921	6.4	4.0	10.0
Sex								
Male	88,854	8.4	5.1	13.6	504,039	7.0	5.6	8.6
Female	110,833	9.8	7.3	13.1	1,016,901	12.8	11.1	14.8
Age-adjusted^{&}		9.7	7.2	12.8		10.1	8.9	11.4

* Physician diagnosed asthma.

& Percent is age adjusted to the 2000 United States Population.

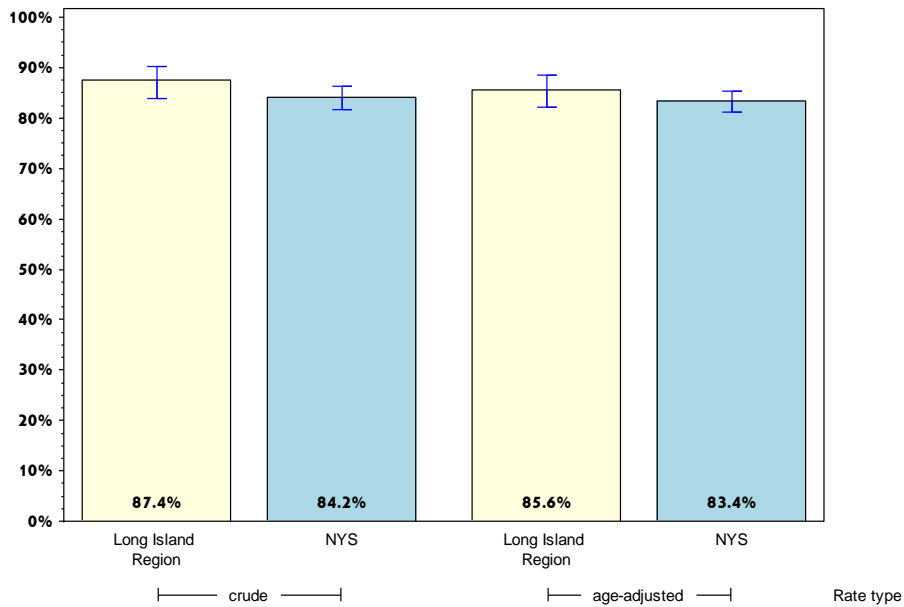
Rates with <10 in the numerator or <50 in the denominator are suppressed.

[^] Highly variable rate (confidence interval with a half-width greater than 10).

Long Island

Prevent Chronic Diseases

Percent of adults with cholesterol checked*



	Long Island				Statewide			
	Est. # of Adults	Percent	Lower 95% limit	Upper 95% limit	Est. # of Adults	Percent	Lower 95% limit	Upper 95% limit
Total	1,871,884	87.4	83.9	90.3	12,572,076	84.2	81.7	86.3
Age								
18-24	120,532	52.7 [^]	36.5	68.4	891,216	49.0	39.4	58.6
25-34	240,716	81.0 [^]	70.9	88.2	1,896,541	71.3	63.9	77.7
35-44	318,533	90.2	82.2	94.8	2,197,539	88.9	85.0	91.8
45-64	740,659	94.5	89.0	97.3	4,694,424	93.8	91.2	95.6
65+	396,796	93.9	89.7	96.4	2,641,873	97.2	95.8	98.2
Race								
White, NH	1,380,554	90.8	87.0	93.6	7,746,530	87.0	84.7	89.0
Black, NH	116,258	98.3	91.5	99.7	1,730,762	81.9	73.0	88.3
Hispanic	229,327	68.7 [^]	57.2	78.3	1,923,116	77.3	70.1	83.1
Other, NH	145,745	85.9 [^]	64.4	95.3	1,171,667	81.9 [^]	67.3	90.8
Sex								
Male	867,052	82.8	76.6	87.6	5,864,748	82.0	78.2	85.2
Female	1,004,832	91.8	88.1	94.5	6,707,327	86.2	82.9	88.9
Age-adjusted^{&}		85.6	82.0	88.5		83.4	81.2	85.4

* As diagnosed by a health professional.

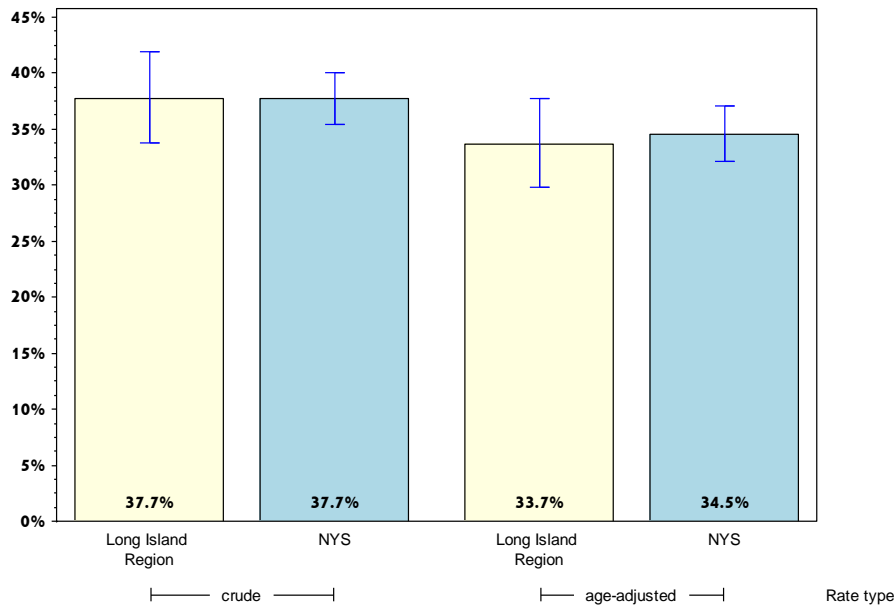
& Percent is age adjusted to the 2000 United States Population.

[^] Highly variable rate (confidence interval with a half-width greater than 10).

Long Island

Prevent Chronic Diseases

Percentage of adults 18 years and older with elevated cholesterol*



	Long Island				Statewide			
	Est. # of Adults	Percent	Lower 95% limit	Upper 95% limit	Est. # of Adults	Percent	Lower 95% limit	Upper 95% limit
Total	702,373	37.7	33.7	41.9	4,711,105	37.7	35.4	40.1
Age								
18-24	#				124,288	14.0	8.0	23.2
25-34	47,988	19.9 [^]	11.7	32.0	435,898	23.0	16.9	30.5
35-44	87,691	27.5 [^]	18.6	38.6	620,994	28.3	22.0	35.6
45-64	316,860	43.1	36.3	50.2	2,009,889	43.1	39.8	46.4
65+	230,846	58.8	51.5	65.8	1,439,336	55.4	51.3	59.4
Race								
White, NH	551,792	40.3	35.8	44.9	3,102,928	40.3	38.2	42.4
Black, NH	26,853	23.1 [^]	12.3	39.2	561,511	33.1	25.6	41.6
Hispanic	72,262	31.5 [^]	20.7	44.7	727,074	37.8	30.7	45.5
Other, NH	#				319,592	27.3 [^]	18.7	38.1
Sex								
Male	358,481	41.6	35.3	48.2	2,369,080	40.5	37.0	44.3
Female	343,892	34.4	29.3	39.8	2,342,025	35.2	32.4	38.2
Age-adjusted^{&}		33.7	29.9	37.7		34.5	32.1	37.0

* As diagnosed by a health professional.

& Percent is age adjusted to the 2000 United States Population.

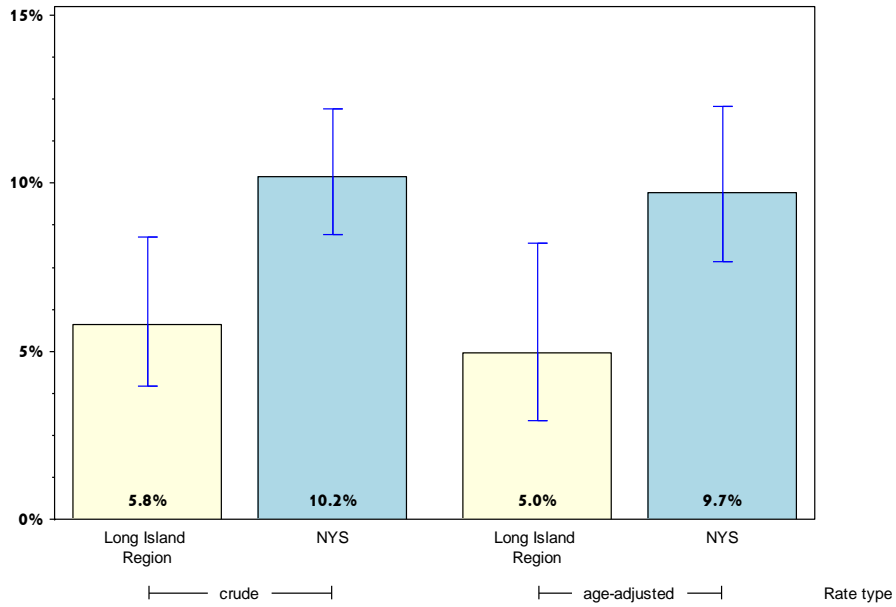
Rates with <10 in the numerator or <50 in the denominator are suppressed.

[^] Highly variable rate (confidence interval with a half-width greater than 10).

Long Island

Prevent Chronic Diseases

Percentage of adults who have taken a course or class to learn how to manage their chronic disease or condition*



	Long Island				Statewide			
	Est. # of Adults	Percent	Lower 95% limit	Upper 95% limit	Est. # of Adults	Percent	Lower 95% limit	Upper 95% limit
Total	57,215	5.8	3.9	8.4	713,905	10.2	8.5	12.2
Age								
18-24	#				11,969	2.9	1.4	6.1
25-34	#				137,115	17.9 [^]	9.2	31.8
35-44	#				51,465	6.0	3.8	9.2
45-64	22,890	5.6	3.0	10.4	282,601	10.2	8.0	13.0
65+	23,490	7.5	4.6	12.0	208,847	10.1	8.0	12.7
Race								
White, NH	40,684	5.4	3.5	8.3	398,657	8.8	7.0	11.1
Black, NH	#				143,698	14.2	9.5	20.7
Hispanic	#				92,991	8.7	4.5	16.4
Other, NH	#				78,559	19.0 [^]	10.4	32.2
Sex								
Male	30,763	6.9	4.0	11.6	324,668	10.2	7.7	13.4
Female	26,452	4.9	2.9	8.3	389,237	10.2	8.0	12.9
Age-adjusted^{&}		5.0	2.9	8.2		9.7	7.7	12.3

* Courses for high blood pressure, arthritis, or diabetes.

[&] Percent is age adjusted to the 2000 United States Population.

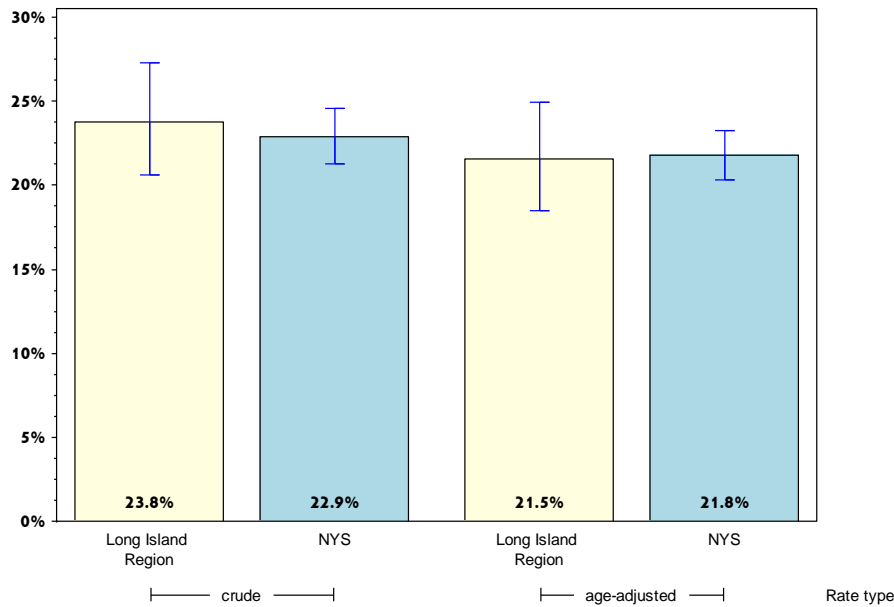
Rates with <10 in the numerator or <50 in the denominator are suppressed.

[^] Highly variable rate (confidence interval with a half-width greater than 10).

Long Island

Prevent Chronic Diseases

Percentage of adults with arthritis*



	Long Island				Statewide			
	Est. # of Adults	Percent	Lower 95% limit	Upper 95% limit	Est. # of Adults	Percent	Lower 95% limit	Upper 95% limit
Total	521,996	23.8	20.6	27.2	3,491,206	22.9	21.3	24.6
Age								
18-24	#				40,067	2.0	1.1	3.6
25-34	#				228,246	8.3	5.9	11.7
35-44	51,802	14.5	8.6	23.6	323,152	12.9	9.4	17.5
45-64	196,693	25.1	19.8	31.2	1,465,151	29.2	26.5	32.1
65+	213,868	49.8	43.0	56.7	1,353,867	49.3	45.4	53.2
Race								
White, NH	419,861	26.8	22.9	31.0	2,474,787	27.2	25.6	28.9
Black, NH	27,204	22.3 [^]	12.3	37.0	400,524	18.5	13.4	24.9
Hispanic	50,350	15.1	8.9	24.4	460,563	18.0	13.6	23.4
Other, NH	#				155,331	10.8	7.2	15.8
Sex								
Male	198,662	18.8	14.5	24.0	1,258,898	17.3	15.2	19.6
Female	323,335	28.5	24.0	33.3	2,232,309	28.0	25.7	30.4
Age-adjusted^{&}		21.5	18.5	25.0		21.8	20.3	23.3

* Includes rheumatoid arthritis, gout, lupus, or fibromyalgia.

& Percent is age adjusted to the 2000 United States Population.

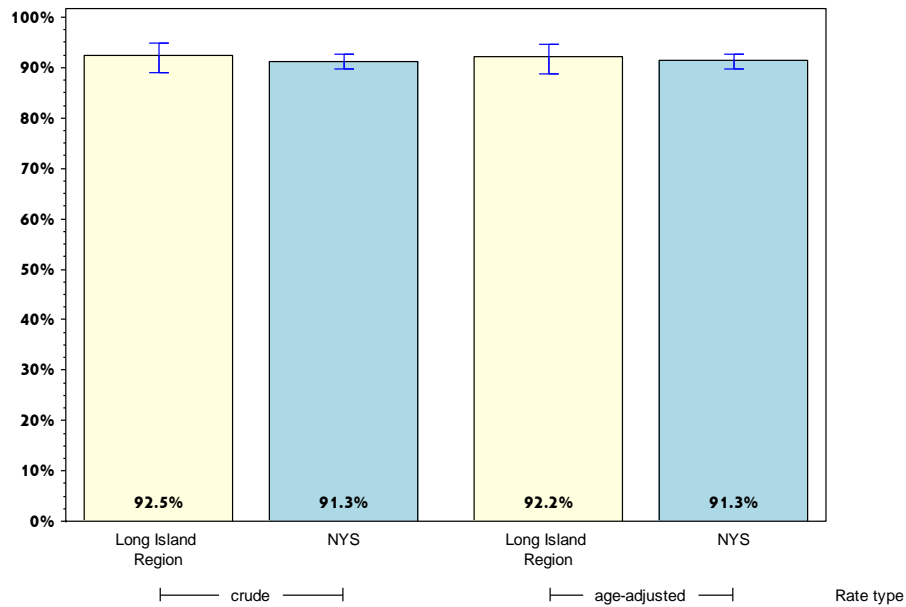
Rates with <10 in the numerator or <50 in the denominator are suppressed.

[^] Highly variable rate (confidence interval with a half-width greater than 10).

Long Island

Promote a Healthy and Safe Environment

Percentage of adults who consider their neighborhood suitable for walking and physical activity



	Long Island				Statewide			
	Est. # of Adults	Percent	Lower 95% limit	Upper 95% limit	Est. # of Adults	Percent	Lower 95% limit	Upper 95% limit
Total	1,905,059	92.5	89.0	94.9	13,107,891	91.3	89.8	92.6
Age								
18-24	191,559	82.6 [^]	61.0	93.6	1,641,319	87.9	80.9	92.5
25-34	265,090	92.1	85.9	95.7	2,218,379	86.6	80.9	90.8
35-44	323,401	92.9	86.7	96.4	2,218,331	93.4	90.6	95.4
45-64	690,386	93.1	85.5	96.9	4,372,743	92.2	90.1	93.9
65+	387,564	97.0	93.7	98.5	2,447,810	94.7	92.7	96.1
Race								
White, NH	1,388,050	94.0	90.6	96.2	8,055,698	93.1	91.7	94.3
Black, NH	99,539	95.7 [^]	85.5	98.8	1,798,763	89.3	83.3	93.4
Hispanic	285,836	91.5	85.4	95.3	1,963,304	84.3	78.2	89.0
Other, NH		#			1,290,125	94.0	88.9	96.9
Sex								
Male	891,357	92.8	86.3	96.3	6,375,291	92.5	90.3	94.3
Female	1,013,702	92.2	87.7	95.1	6,732,600	90.1	87.9	91.9
Age-adjusted^{&}		92.2	88.7	94.6		91.3	89.8	92.6

& Percent is age adjusted to the 2000 United States Population.

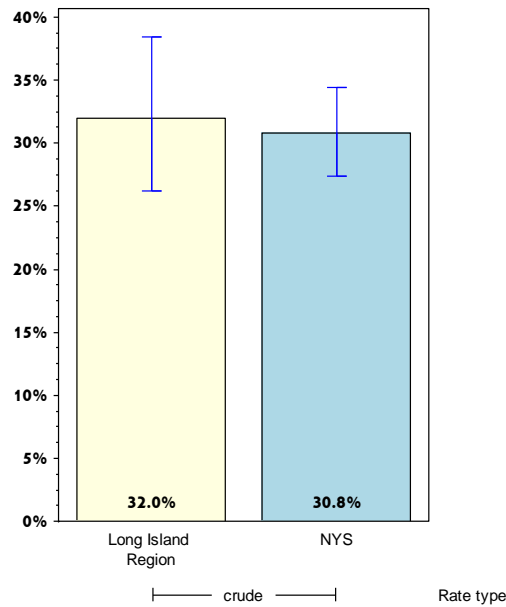
Rates with <10 in the numerator or <50 in the denominator are suppressed.

[^] Highly variable rate (confidence interval with a half-width greater than 10).

Long Island

Promote a Healthy and Safe Environment

Percentage of adults aged 65+ years with at least one fall in the past 12 months



	Long Island				Statewide			
	Est. # of Adults	Percent	Lower 95% limit	Upper 95% limit	Est. # of Adults	Percent	Lower 95% limit	Upper 95% limit
Total	129,598	32.0	26.2	38.4	802,383	30.8	27.3	34.5
Age⁺								
18-24								
25-34								
35-44								
45-64								
65+								
Race								
White, NH	121,853	34.1	27.9	40.9	600,059	31.3	28.3	34.5
Black, NH		#			61,485	22.9 [^]	12.6	38.1
Hispanic		#			96,513	39.1 [^]	21.8	59.7
Other, NH		#			44,326	25.2 [^]	12.2	45.0
Sex								
Male	56,468	31.8 [^]	23.1	41.8	324,764	30.4	25.5	35.7
Female	73,130	32.2	24.8	40.7	477,619	31.1	26.4	36.2
Age-adjusted^{+,&}								

& Percent is age adjusted to the 2000 United States Population.

+ Age-adjusted and age specific percent not generated for health indicators with age range limits.

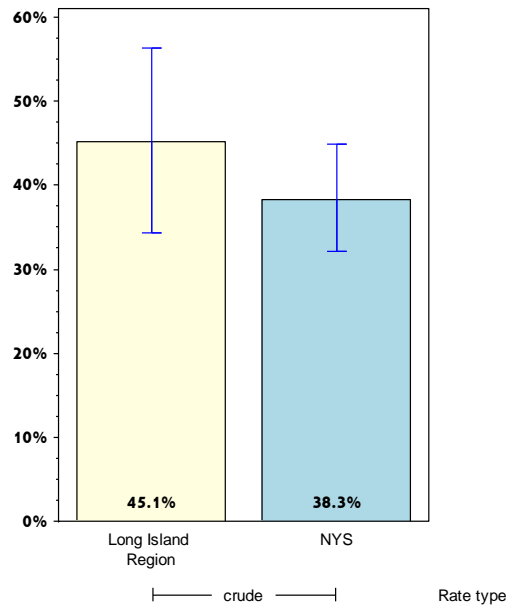
Rates with <10 in the numerator or <50 in the denominator are suppressed.

[^] Highly variable rate (confidence interval with a half-width greater than 10).

Long Island

Promote a Healthy and Safe Environments

Among adults aged 65+ years with at least one fall in the past 12 months, percent that resulted in injury*



	Long Island				Statewide			
	Est. # of Adults	Percent	Lower 95% limit	Upper 95% limit	Est. # of Adults	Percent	Lower 95% limit	Upper 95% limit
Total Age⁺	55,674	45.1 [^]	34.4	56.3	304,376	38.3	32.2	44.9
18-24								
25-34								
35-44								
45-64								
65+								
Race								
White, NH	54,228	45.8 [^]	34.7	57.3	223,708	37.6	32.1	43.4
Black, NH		#			33,030	53.7 [^]	28.5	77.2
Hispanic		#			31,933	34.1 [^]	11.7	66.8
Other, NH		#			15,705	35.4 [^]	12.0	68.8
Sex								
Male		#			103,371	32.2	24.1	41.5
Female	30,947	44.4 [^]	30.6	59.1	201,005	42.5	33.9	51.5
Age-adjusted^{+,&}								

* Falls that limited regular activities or lead to doctor visits.

& Percent is age adjusted to the 2000 United States Population.

+ Age-adjusted and age specific percent not generated for health indicators with age range limits.

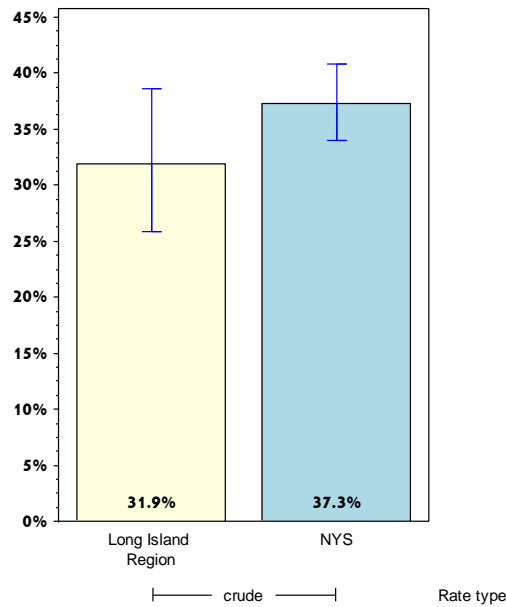
Rates with <10 in the numerator or <50 in the denominator are suppressed.

[^] Highly variable rate (confidence interval with a half-width greater than 10).

Long Island

Prevent HIV/STDs, Vaccine Preventable Diseases and Healthcare-Associated Infections

Percentage of adults aged 47-68 years reporting ever tested for Hepatitis C (HCV)



	Long Island				Statewide			
	Est. # of Adults	Percent	Lower 95% limit	Upper 95% limit	Est. # of Adults	Percent	Lower 95% limit	Upper 95% limit
Total	219,317	31.9	25.9	38.7	1,662,747	37.3	34.0	40.8
Age⁺								
18-24								
25-34								
35-44								
45-64								
65+								
Race								
White, NH	166,182	31.8	25.3	39.1	957,863	33.7	31.0	36.4
Black, NH		#			347,642	52.3 [^]	40.1	64.2
Hispanic		#			270,194	44.2 [^]	31.2	58.1
Other, NH		#			87,049	26.2 [^]	15.7	40.4
Sex								
Male	127,025	39.9 [^]	29.7	51.0	929,342	43.4	38.2	48.7
Female	92,292	25.1	18.3	33.3	733,405	31.7	27.6	36.1
Age-adjusted^{+,&}								

& Percent is age adjusted to the 2000 United States Population.

+ Age-adjusted and age specific percent not generated for health indicators with age range limits.

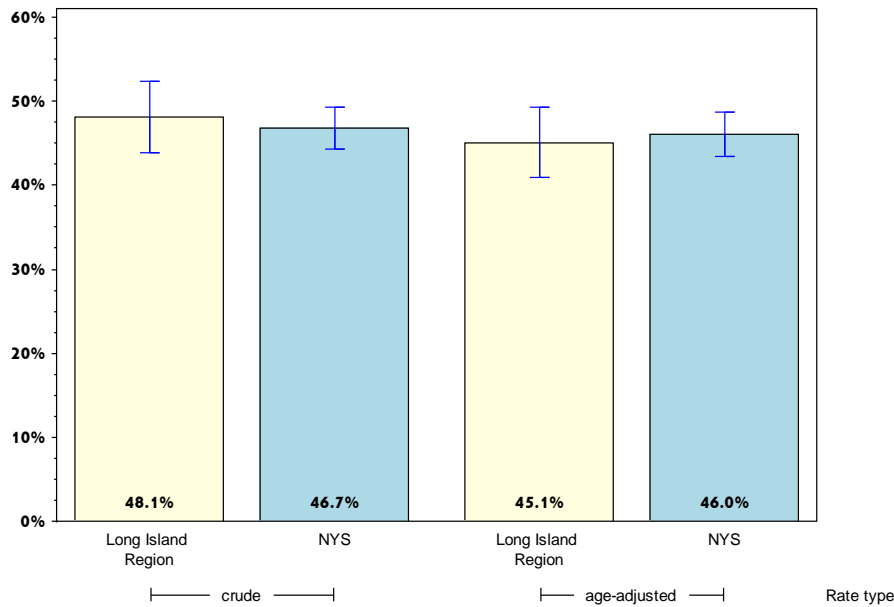
Rates with <10 in the numerator or <50 in the denominator are suppressed.

[^] Highly variable rate (confidence interval with a half-width greater than 10).

Long Island

Prevent HIV/STDs, Vaccine Preventable Diseases and Healthcare-Associated Infections

Percentage of adults aged 18+ years with flu immunization in the past year*



	Long Island				Statewide			
	Est. # of Adults	Percent	Lower 95% limit	Upper 95% limit	Est. # of Adults	Percent	Lower 95% limit	Upper 95% limit
Total	994,729	48.1	43.9	52.3	6,798,706	46.7	44.3	49.2
Age								
18-24	54,318	23.5 [^]	13.0	38.7	600,414	31.7	23.4	41.5
25-34	77,682	27.0 [^]	17.4	39.3	907,897	35.3	29.0	42.1
35-44	129,510	37.2 [^]	27.5	48.1	981,422	41.1	33.9	48.6
45-64	389,076	52.4	45.3	59.4	2,282,268	47.4	44.1	50.8
65+	316,838	78.0	72.0	83.1	1,895,586	72.1	67.9	75.9
Race								
White, NH	738,051	49.8	45.1	54.5	4,296,522	49.3	47.1	51.5
Black, NH	52,486	50.5 [^]	34.8	66.1	718,122	35.0	27.6	43.3
Hispanic	102,848	32.8 [^]	23.3	43.9	971,941	40.8	34.1	47.8
Other, NH		#			812,120	58.5 [^]	45.1	70.7
Sex								
Male	464,784	48.2	41.8	54.6	3,045,064	43.8	40.1	47.5
Female	529,945	48.1	42.5	53.7	3,753,643	49.5	46.2	52.8
Age-adjusted^{&}		45.1	40.9	49.3		46.0	43.4	48.6

* Includes flu shot or flu spray

& Percent is age adjusted to the 2000 United States Population.

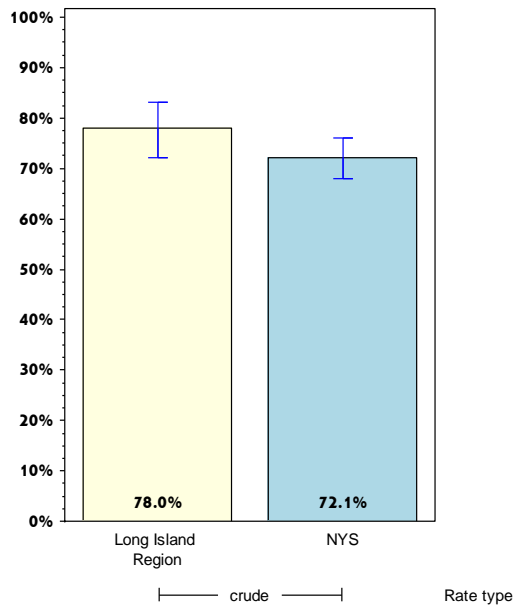
Rates with <10 in the numerator or <50 in the denominator are suppressed.

[^] Highly variable rate (confidence interval with a half-width greater than 10).

Long Island

Prevent HIV/STDs, Vaccine Preventable Diseases and Healthcare-Associated Infections

Percentage of adults aged 65+ years with flu immunization in the past year*



	Long Island				Statewide			
	Est. # of Adults	Percent	Lower 95% limit	Upper 95% limit	Est. # of Adults	Percent	Lower 95% limit	Upper 95% limit
Total Age⁺	316,838	78.0	72.0	83.1	1,895,586	72.1	67.9	75.9
18-24								
25-34								
35-44								
45-64								
65+								
Race								
White, NH	282,266	78.8	72.8	83.7	1,484,360	76.9	73.9	79.6
Black, NH		#			103,016	38.4 [^]	23.8	55.5
Hispanic		#			170,589	69.0 [^]	47.8	84.3
Other, NH		#			137,621	75.2 [^]	51.4	89.7
Sex								
Male	143,594	80.7	72.4	87.0	802,715	73.9	67.7	79.3
Female	173,244	75.9	67.2	82.9	1,092,871	70.8	65.0	76.0
Age-adjusted^{+,&}								

* Includes flu shot or flu spray

& Percent is age adjusted to the 2000 United States Population.

+ Age-adjusted and age specific percent not generated for health indicators with age range limits.

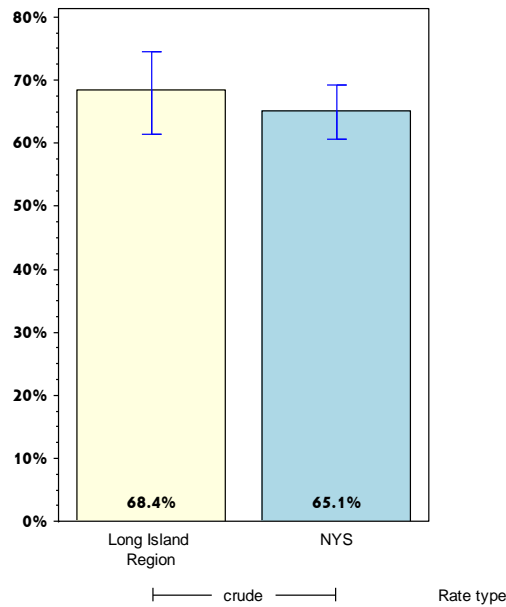
Rates with <10 in the numerator or <50 in the denominator are suppressed.

[^] Highly variable rate (confidence interval with a half-width greater than 10).

Long Island

Prevent HIV/STDs, Vaccine Preventable Diseases and Healthcare-Associated Infections

Percentage of adults aged 65+ years with pneumococcal immunization



	Long Island				Statewide			
	Est. # of Adults	Percent	Lower 95% limit	Upper 95% limit	Est. # of Adults	Percent	Lower 95% limit	Upper 95% limit
Total	263,247	68.4	61.5	74.5	1,617,276	65.1	60.7	69.2
Age⁺								
18-24								
25-34								
35-44								
45-64								
65+								
Race								
White, NH	246,942	72.6	66.1	78.2	1,303,462	71.4	68.1	74.4
Black, NH		#			123,843	48.9 [^]	30.2	67.8
Hispanic		#			104,466	45.7 [^]	27.5	65.3
Other, NH		#			85,505	48.1 [^]	27.7	69.2
Sex								
Male	111,890	66.3 [^]	55.8	75.5	631,549	62.4	56.7	67.7
Female	151,357	69.9	60.7	77.8	985,727	66.9	60.5	72.7
Age-adjusted^{+,&}								

& Percent is age adjusted to the 2000 United States Population.

+ Age-adjusted and age specific percent not generated for health indicators with age range limits.

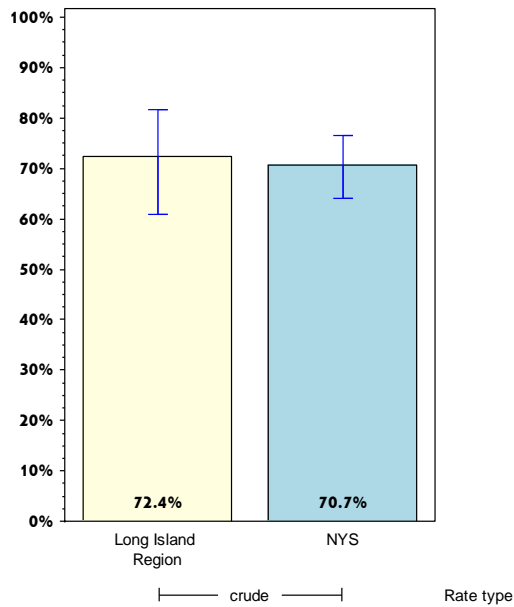
Rates with <10 in the numerator or <50 in the denominator are suppressed.

[^] Highly variable rate (confidence interval with a half-width greater than 10).

Long Island

Promote Healthy Women, Infants, and Children

Percentage of women aged 18-44 years who had dental visit within the last year



	Long Island				Statewide			
	Est. # of Adults	Percent	Lower 95% limit	Upper 95% limit	Est. # of Adults	Percent	Lower 95% limit	Upper 95% limit
Total	306,638	72.4 [^]	60.8	81.6	2,268,176	70.7	64.0	76.5
Age⁺								
18-24								
25-34								
35-44								
45-64								
65+								
Race								
White, NH	214,913	77.7 [^]	63.6	87.4	1,155,302	73.5	68.1	78.3
Black, NH		#			426,771	78.8 [^]	61.7	89.5
Hispanic		#			412,421	62.2 [^]	48.3	74.4
Other, NH		#			273,683	63.0 [^]	30.7	86.8
Sex								
Male		#				#		
Female	306,638	72.4 [^]	60.8	81.6	2,268,176	70.7	64.0	76.5
Age-adjusted^{+,&}								

& Percent is age adjusted to the 2000 United States Population.

+ Age-adjusted and age specific percent not generated for health indicators with age range limits.

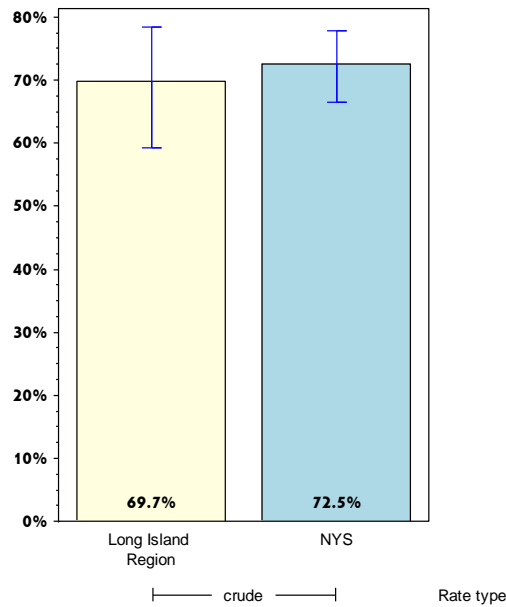
Rates with <10 in the numerator or <50 in the denominator are suppressed.

[^] Highly variable rate (confidence interval with a half-width greater than 10).

Long Island

Promote Healthy Women, Infants, and Children

Women aged 18-44 years who saw a doctor for a routine checkup within the last year



	Long Island				Statewide			
	Est. # of Adults	Percent	Lower 95% limit	Upper 95% limit	Est. # of Adults	Percent	Lower 95% limit	Upper 95% limit
Total	318,878	69.7 [^]	59.3	78.4	2,615,375	72.5	66.5	77.8
Age⁺								
18-24								
25-34								
35-44								
45-64								
65+								
Race								
White, NH	198,090	70.4 [^]	56.8	81.1	1,220,281	70.1	65.1	74.6
Black, NH		#			512,270	83.8 [^]	68.8	92.4
Hispanic		#			606,739	76.3 [^]	64.1	85.3
Other, NH		#			276,085	60.1 [^]	30.5	83.8
Sex								
Male		#				#		
Female	318,878	69.7 [^]	59.3	78.4	2,615,375	72.5	66.5	77.8
Age-adjusted^{+,&}								

& Percent is age adjusted to the 2000 United States Population.

+ Age-adjusted and age specific percent not generated for health indicators with age range limits.

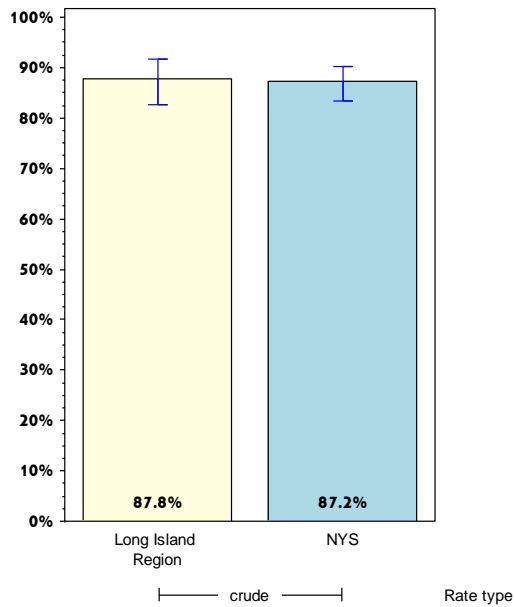
Rates with <10 in the numerator or <50 in the denominator are suppressed.

[^] Highly variable rate (confidence interval with a half-width greater than 10).

Long Island

Promote Healthy Women, Infants, and Children

Percentage of women aged 18-64 years with health care coverage



	Long Island				Statewide			
	Est. # of Adults	Percent	Lower 95% limit	Upper 95% limit	Est. # of Adults	Percent	Lower 95% limit	Upper 95% limit
Total	764,073	87.8	82.5	91.6	5,351,099	87.2	83.4	90.2
Age⁺								
18-24								
25-34								
35-44								
45-64								
65+								
Race								
White, NH	580,102	93.8	90.0	96.3	3,178,979	91.6	90.0	93.0
Black, NH	#	#	#	#	916,108	93.3	88.7	96.1
Hispanic	60,883	50.9 [^]	33.5	68.1	807,553	76.0	66.5	83.5
Other, NH	#	#	#	#	448,460	71.8 [^]	43.3	89.5
Sex								
Male	#	#	#	#	#	#	#	#
Female	764,073	87.8	82.5	91.6	5,351,099	87.2	83.4	90.2
Age-adjusted^{+,&}								

& Percent is age adjusted to the 2000 United States Population.

+ Age-adjusted and age specific percent not generated for health indicators with age range limits.

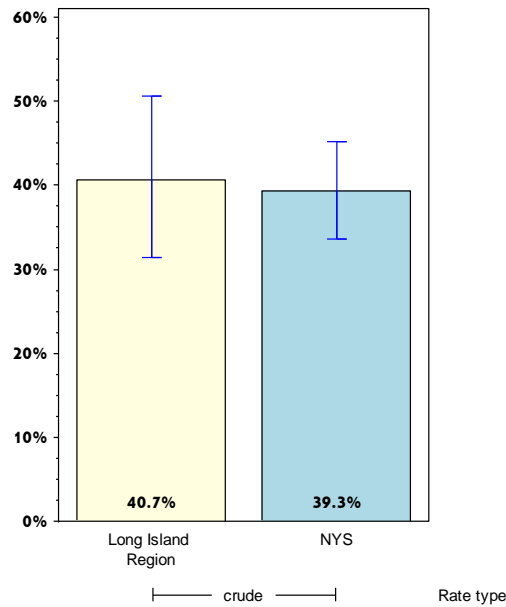
Rates with <10 in the numerator or <50 in the denominator are suppressed.

[^] Highly variable rate (confidence interval with a half-width greater than 10).

Long Island

Promote Healthy Women, Infants, and Children

Percentage of women aged 18-44 years whose health care provider discussed planning a healthy pregnancy



	Long Island				Statewide			
	Est. # of Adults	Percent	Lower 95% limit	Upper 95% limit	Est. # of Adults	Percent	Lower 95% limit	Upper 95% limit
Total	176,841	40.7	31.5	50.6	1,268,971	39.3	33.7	45.2
Age⁺								
18-24								
25-34								
35-44								
45-64								
65+								
Race								
White, NH	110,733	39.7 [^]	28.4	52.3	723,302	45.9	41.1	50.9
Black, NH		#			291,237	53.7 [^]	35.5	71.0
Hispanic		#			192,904	28.5 [^]	19.0	40.3
Other, NH		#			61,528	14.1 [^]	6.5	27.9
Sex								
Male		#				#		
Female	176,841	40.7	31.5	50.6	1,268,971	39.3	33.7	45.2
Age-adjusted^{+,&}								

& Percent is age adjusted to the 2000 United States Population.

+ Age-adjusted and age specific percent not generated for health indicators with age range limits.

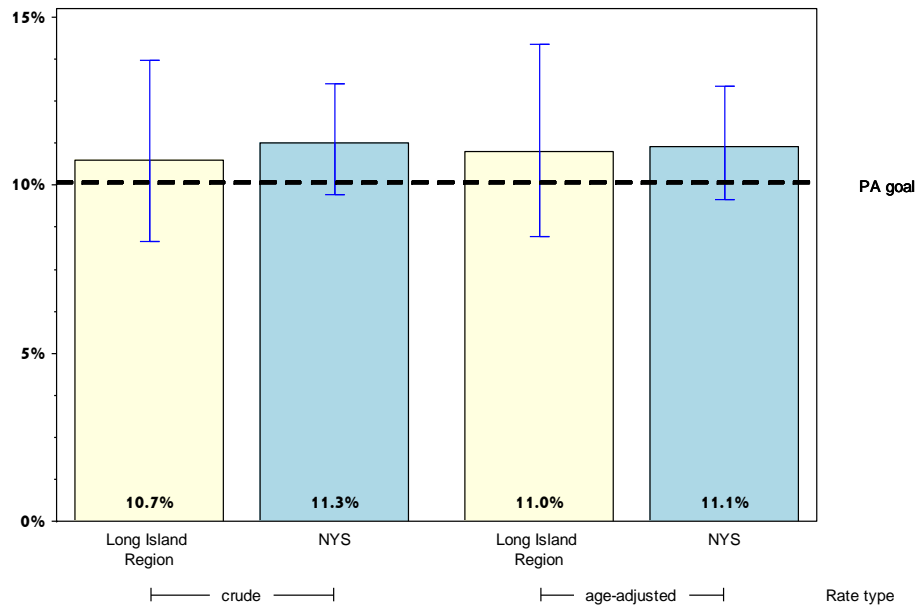
Rates with <10 in the numerator or <50 in the denominator are suppressed.

[^] Highly variable rate (confidence interval with a half-width greater than 10).

Long Island

Promote Mental Health and Prevention Substance Abuse

Percentage of adults with poor mental health for 14 or more days in the last month



	Long Island				Statewide			
	Est. # of Adults	Percent	Lower 95% limit	Upper 95% limit	Est. # of Adults	Percent	Lower 95% limit	Upper 95% limit
Total	229,662	10.7	8.3	13.7	1,672,677	11.3	9.7	13.0
Age								
18-24	#				186,862	9.5	6.7	13.1
25-34	39,243	12.9	7.1	22.4	418,716	15.7	10.2	23.4
35-44	37,318	10.5	5.6	18.9	259,463	10.5	7.0	15.4
45-64	103,258	13.6	9.5	19.2	587,164	12.1	10.3	14.2
65+	19,230	4.7	2.8	7.8	175,961	6.7	4.9	9.0
Race								
White, NH	178,857	11.7	8.8	15.5	1,072,012	12.0	10.2	14.2
Black, NH	#				237,227	11.2	7.0	17.5
Hispanic	32,206	10.0	4.9	19.3	264,437	11.0	7.1	16.6
Other, NH	#				99,001	7.0	3.9	12.2
Sex								
Male	116,859	11.3	7.6	16.5	734,315	10.4	7.9	13.5
Female	112,803	10.2	7.4	13.9	938,362	12.1	10.2	14.2
Age-adjusted^{&}		11.0	8.5	14.2		11.1	9.6	13.0

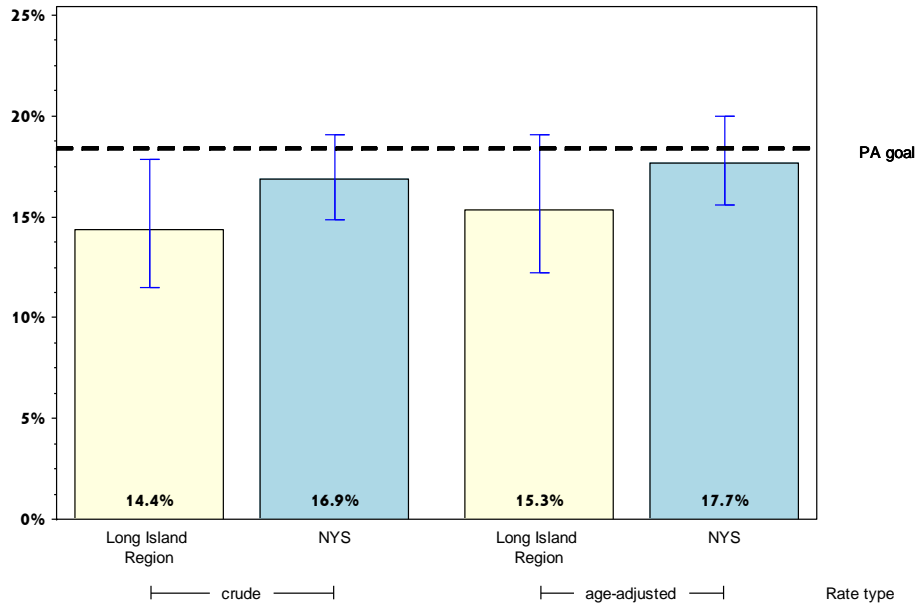
& Percent is age adjusted to the 2000 United States Population.

Rates with <10 in the numerator or <50 in the denominator are suppressed.

Long Island

Promote Mental Health and Prevention Substance Abuse

Percentage of adult binge drinking during the past month*



	Long Island				Statewide			
	Est. # of Adults	Percent	Lower 95% limit	Upper 95% limit	Est. # of Adults	Percent	Lower 95% limit	Upper 95% limit
Total	294,118	14.4	11.5	17.8	2,413,447	16.9	14.9	19.1
Age								
18-24	45,787	21.0 [^]	11.3	35.7	515,466	27.1	19.4	36.6
25-34	65,696	23.1 [^]	13.7	36.2	633,963	25.0	18.9	32.3
35-44	55,565	16.2	10.5	24.3	509,131	22.6	17.2	29.1
45-64	102,983	13.9	9.6	19.9	656,578	13.7	11.7	16.0
65+	16,312	4.0	1.8	8.5	86,636	3.4	2.7	4.2
Race								
White, NH	237,416	16.4	12.8	20.7	1,649,594	19.1	17.0	21.5
Black, NH	#	#	#	#	324,364	16.3 [^]	9.4	26.8
Hispanic	25,464	7.9	3.7	15.9	277,966	11.6	7.7	17.1
Other, NH	#	#	#	#	161,523	12.4	6.8	21.7
Sex								
Male	180,268	18.5	13.8	24.4	1,567,117	22.8	19.3	26.8
Female	113,850	10.6	7.6	14.6	846,330	11.4	9.6	13.4
Age-adjusted^{&}		15.3	12.2	19.1		17.7	15.6	20.0

* Men who have five or more drinks, women having four or more drinks on one occasion

& Percent is age adjusted to the 2000 United States Population.

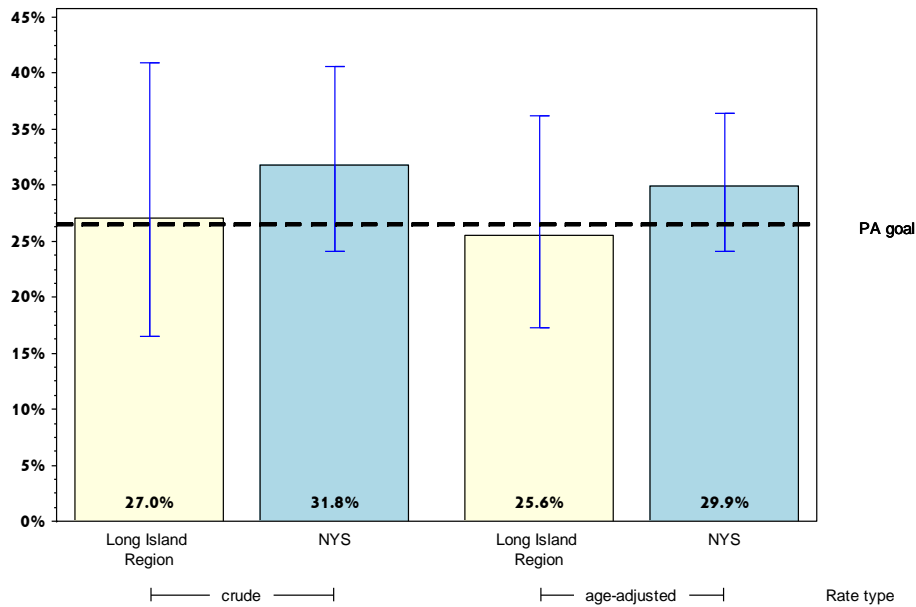
Rates with <10 in the numerator or <50 in the denominator are suppressed.

[^] Highly variable rate (confidence interval with a half-width greater than 10).

Long Island

Promote Mental Health and Prevention Substance Abuse

Percentage of cigarette smoking among adults who report poor mental health



	Long Island				Statewide			
	Est. # of Adults	Percent	Lower 95% limit	Upper 95% limit	Est. # of Adults	Percent	Lower 95% limit	Upper 95% limit
Total	62,057	27.0 [^]	16.5	40.9	519,245	31.8	24.1	40.6
Age								
18-24	#	#			64,468	35.6 [^]	22.4	51.5
25-34	#	#			192,926	47.3 [^]	24.8	70.8
35-44	#	#			70,340	27.6 [^]	16.6	42.1
45-64	#	#			177,977	31.2	24.0	39.5
65+	#	#			13,368	7.7	4.1	13.9
Race								
White, NH	51,494	28.8 [^]	16.3	45.6	423,246	39.9 [^]	29.9	50.7
Black, NH	#	#			33,694	14.4 [^]	7.7	25.3
Hispanic	#	#			45,968	18.1 [^]	9.4	31.9
Other, NH	#	#			16,336	19.6 [^]	9.4	36.5
Sex								
Male	#	#			272,857	38.4 [^]	24.1	55.0
Female	25,485	22.6 [^]	12.6	37.2	246,388	26.7	20.7	33.8
Age-adjusted^{&}		25.6 [^]	17.2	36.2		29.9	24.1	36.4

& Percent is age adjusted to the 2000 United States Population.

Rates with <10 in the numerator or <50 in the denominator are suppressed.

[^] Highly variable rate (confidence interval with a half-width greater than 10).