

# eBRFSS 2013-2014 Health Indicators: Jefferson

General Description .....	2
Improve Health Status and Reduce Health Disparities .....	3
Percentage of adults who did not receive medical care because of cost .....	3
Percentage of adults who have a regular health care provider .....	4
Percentage of adults who had a dentist visit within the past year .....	5
Percentage of adults living with a disability.....	6
Percentage of adults aged 18-64 years with healthcare coverage .....	7
Percentage of adults aged 18-64 years who saw a doctor for a routine checkup within the last year .....	8
Percentage of adults experiencing housing insecurity in the past 12 months.....	9
Percentage of adults experiencing food insecurity in the past 12 months.....	10
Percentage of adults with poor self-reported health .....	11
Percentage of adults who report 14 or more days of poor physical health.....	12
Prevent Chronic Diseases .....	13
Percentage of adults who are obese .....	13
Percentage of adults with an annual household income less than \$25,000 who are obese .....	14
Percentage of adults living with a disability who are obese .....	15
Percentage of adults overweight or obese .....	16
Percentage of adults who participated in leisure time physical activity in the past 30 days.....	17
Percentage of adults who consume one or more sugary drinks daily .....	18
Percentage of adults who consume fast-food three or more times per week .....	19
Percentage of adults with physician diagnosed diabetes .....	20
Percentage of adults who are current smokers .....	21
Percentage of adults with annual household income less than \$25,000 who are current smokers .....	22
Percentage of adults aged 18-24 years who are current smokers.....	23
Percentage of women aged 50-74 years receiving breast cancer screening based on recent guidelines .....	24
Percentage of women aged 50-74 years with annual household income of less than \$25,000 receiving breast cancer screening based on recent guidelines.....	25
Percentage of women aged 21-65 years receiving cervical cancer screening based on recent guidelines .....	26
Percentage of women aged 21-65 years with annual household income of less than \$25,000 receiving cervical cancer screening based on recent guidelines.....	27
Percentage of adults aged 50-75 years receiving colorectal cancer screening based on recent guidelines.....	28
Percentage of adults aged 50-75 years with annual household income less than \$25,000 receiving colorectal cancer screening based on recent guidelines.....	29
Percentage of adults who had a test for high blood sugar or diabetes within the past three years .....	30
Percentage of adults with physician-diagnosed prediabetes .....	31
Percentage of adults with physician-diagnosed high blood pressure.....	32
Percentage of adults with diagnosed high blood pressure taking high blood pressure medication .....	33
Percentage of adults with current asthma .....	34
Percent of adults with cholesterol checked.....	35
Percentage of adults 18 years and older with elevated cholesterol.....	36
Percentage of adults who have taken a course or class to learn how to manage their chronic disease or condition .....	37
Percentage of adults with arthritis .....	38
Promote a Healthy and Safe Environment .....	39
Percentage of adults who consider their neighborhood suitable for walking and physical activity.....	39
Percentage of adults aged 65+ years with at least one fall in the past 12 months.....	40
Among adults aged 65+ years with at least one fall in the past 12 months, percent that resulted in injury.....	41
Prevent HIV/STDs, Vaccine Preventable Diseases and Healthcare-Associated Infections.....	42
Percentage of adults aged 47-68 years reporting ever tested for Hepatitis C (HCV).....	42
Percentage of adults aged 18+ years with flu immunization in the past year .....	43
Percentage of adults aged 65+ years with flu immunization in the past year .....	44
Percentage of adults aged 65+ years with pneumococcal immunization.....	45
Promote Healthy Women, Infants, and Children .....	46
Percentage of women aged 18-44 years who had dental visit within the last year .....	46
Women aged 18-44 years who saw a doctor for a routine checkup within the last year.....	47
Percentage of women aged 18-64 years with health care coverage .....	48
Percentage of women aged 18-44 years whose health care provider discussed planning a healthy pregnancy .....	49
Promote Mental Health and Prevention Substance Abuse .....	50
Percentage of adults with poor mental health for 14 or more days in the last month .....	50
Percentage of adult binge drinking during the past month .....	51
Percentage of cigarette smoking among adults who report poor mental health.....	52

## General Description

The New York State Expanded Behavioral Risk Factor Surveillance System 2013-2014 (2014 eBRFSS) was design to supplement the Center for Disease Control and Prevention (CDC) Behavioral Risk Factor Surveillance System (BRFSS), which is conducted annually in New York State. The purpose of the 2014 eBRFSS was to produce local information on key public health issues. Data for the project were collected from April 15, 2013 to May 10, 2014. The 2014 eBRFSS reached both households with landline telephones and households which only had cell phones. Like the annual BRFSS, New York State's 2014 eBRFSS was designed to be representative of the non-institutionalized adult household population, aged 18 years and older.

### Reported Health Indicators

There are a total of 50 health indicators included in the report. The health indicators include 10 measures included in the New York State Department of Health's Prevention Agenda, NYS Health Innovation Plan (SHIP), Delivery System Reform Incentive Payment (DSRIP) Program, or the NYS Community Health Indicator Reports (CHIRS). An additional 40 important health indicators are also included. The indicators are organized by the Priority Area of the Prevention Agenda and are reported statewide, by region, and by county.

### Data Collection Methodology, Sampling and Weighting

The data collection methods for the 2014 eBRFSS aligned with the CDC's standard annual BRFSS methods. The 2014 eBRFSS questionnaire used standard questions from the BRFSS. Survey interviews were conducted in both English and Spanish. There were 31,690 completed interviews.

The sampling plan for the eBRFSS was developed to result in valid health indicator estimates for New York City (NYC) and each of the 57 counties outside NYC. The sampling approach stratified landlines by county and implemented a disproportionate stratified sampling design that accounted for both listed-households and unlisted numbers. Cell phone households were accounted for through additional strata that covered contiguous groups of counties.

Data were weighted to represent the population using a methodology known as iterative proportional fitting (raking). Raking adjusted the data so that groups underrepresented in the sample were more accurately represented in the estimated rates. Raking also enabled surveys conducted by cell phone to be included in the weighting and to accurately match sample distributions of specified demographic characteristics of the population. The raking categories included in the eBRFSS were: age, gender, race/ethnicity, education, marital status, owner/renter status, telephone usage (i.e. landline and cell phone combinations), and county of residence.

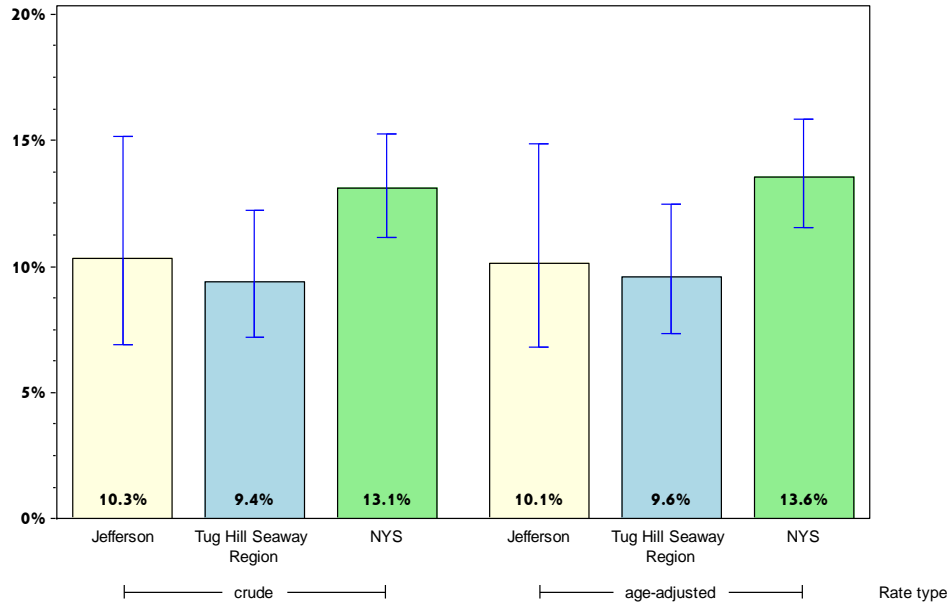
### Limitations of Data Use:

During data analysis, criteria were applied to suppress rates based on too few surveys to be reliable and to identify rates that are highly variable. Rates in which less than 10 respondents were in the numerator or less than 50 respondents were in the denominator were considered unreliable and suppressed from reporting. Rates considered to have high variability due to having confidence limits greater than  $\pm 10\%$  are noted.

# Jefferson

## Improve Health Status and Reduce Health Disparities

Percentage of adults who did not receive medical care because of cost\*



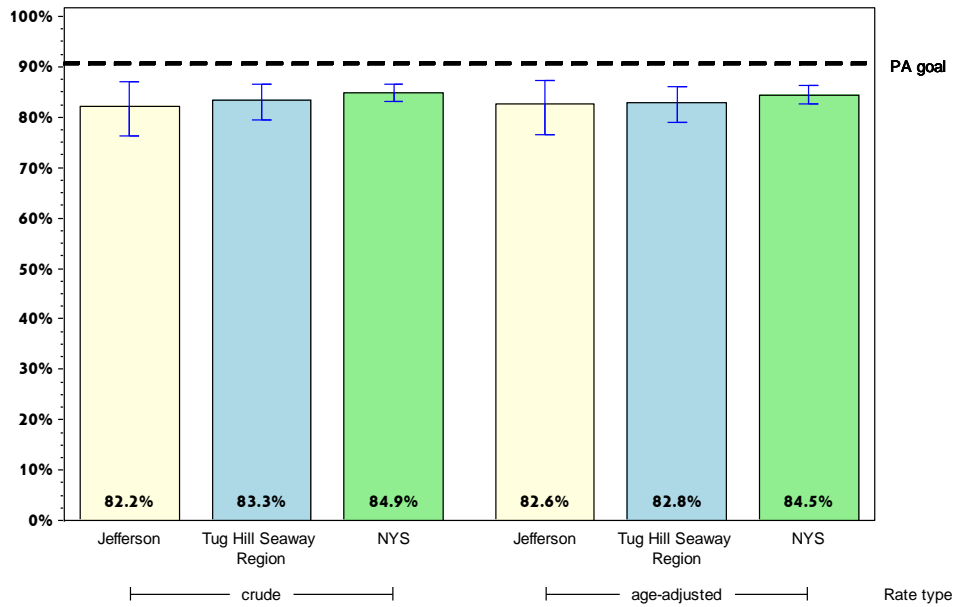
	Jefferson County			Tug Hill Seaway		
	Est. # of Adults	Percent	95% CI	Est. # of Adults	Percent	95% CI
<b>Total</b>	9,287	10.3	(6.9-15.2)	18,757	9.4	(7.2-12.2)
<b>Age</b>						
18-24		#		4,330	13.8 <sup>^</sup>	(6.8-26.2)
25-34		#		3,525	8.7	(4.0-17.8)
35-44		#		3,830	13.1	(7.5-22.0)
45-64	2,290	9.0	(5.0-15.7)	6,151	9.8	(6.8-14.1)
65+		#		858	2.5	(1.4-4.4)
<b>Race</b>						
White, NH	7,268	10.5	(6.9-15.6)	16,183	9.8	(7.5-12.8)
Black, NH		#			#	
Hispanic		#			#	
Other, NH		#			#	
<b>Sex</b>						
male	4,319	9.2	(4.9-16.6)	10,320	10.0	(6.7-14.7)
female	4,968	11.5	(6.8-18.8)	8,436	8.7	(6.1-12.3)
<b>Age-adjusted<sup>&amp;</sup></b>		10.1	(6.8-14.8)		9.6	(7.3-12.5)

\* Among people needing to see a doctor in the past 12 months  
 & Percent is age-adjusted to the 2000 United States Population.  
 # Rates with <10 in the numerator or <50 in the denominator are suppressed.  
 ^ Highly variable rate (confidence interval with a half-width greater than 10).

# Jefferson

## Improve Health Status and Reduce Health Disparities

### Percentage of adults who have a regular health care provider



#### Jefferson County

#### Tug Hill Seaway

	Est. # of Adults	Percent	95% CI	Est. # of Adults	Percent	95% CI
<b>Total</b>	73,808	82.2	(76.2-87.0)	165,898	83.3	(79.6-86.5)
<b>Age</b>		#				
18-24		#		23,573	75.2 <sup>^</sup>	(60.1-85.9)
25-34	14,434	82.0 <sup>^</sup>	(64.8-91.8)	31,889	78.6 <sup>^</sup>	(66.7-87.0)
35-44	9,539	70.7 <sup>^</sup>	(51.1-84.7)	21,113	73.7 <sup>^</sup>	(62.6-82.5)
45-64	22,375	87.3	(78.8-92.8)	55,313	88.0	(83.2-91.6)
65+	13,437	97.4	(92.8-99.1)	32,822	95.8	(92.8-97.5)
<b>Race</b>						
White, NH	55,760	80.2	(73.4-85.6)	134,836	82.0	(78.1-85.3)
Black, NH		#			#	
Hispanic		#			#	
Other, NH		#			#	
<b>Sex</b>						
male	37,643	80.9	(72.0-87.4)	82,280	80.5	(74.7-85.2)
female	36,166	83.7	(74.8-89.9)	83,617	86.3	(81.1-90.2)
<b>Age-adjusted<sup>&amp;</sup></b>		82.6	(76.5-87.3)		82.8	(79.0-86.1)

& Percent is age-adjusted to the 2000 United States Population.

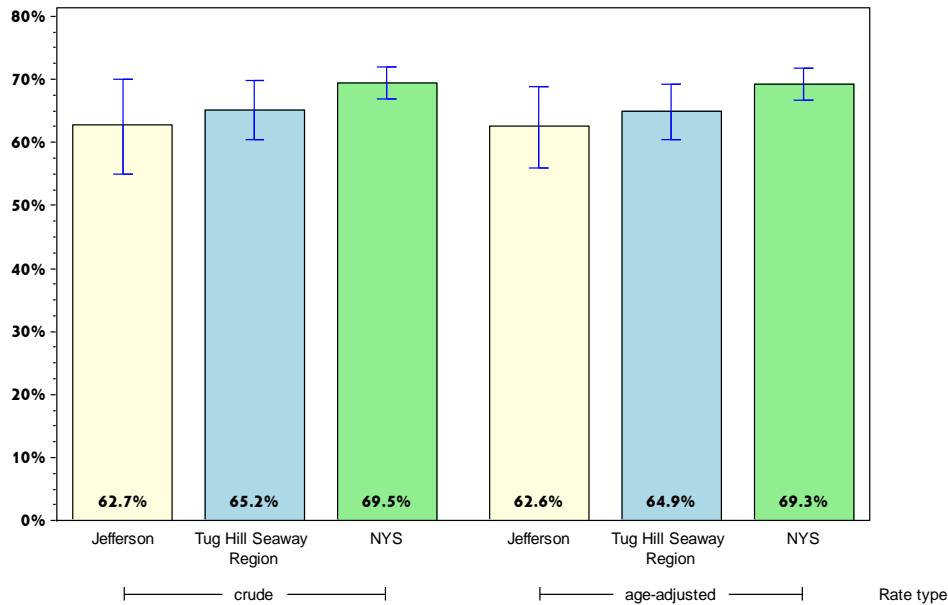
# Rates with <10 in the numerator or <50 in the denominator are suppressed.

<sup>^</sup> Highly variable rate (confidence interval with a half-width greater than 10).

# Jefferson

## Improve Health Status and Reduce Health Disparities

### Percentage of adults who had a dentist visit within the past year



#### Jefferson County

#### Tug Hill Seaway

	Est. # of Adults	Percent	95% CI	Est. # of Adults	Percent	95% CI
<b>Total</b>	54,840	62.7	(54.9-69.9)	126,072	65.2	(60.4-69.7)
<b>Age</b>		#				
18-24		#		20,645	66.1 <sup>^</sup>	(45.9-81.7)
25-34	13,565	79.5 <sup>^</sup>	(60.1-90.9)	29,213	73.2 <sup>^</sup>	(60.1-83.2)
35-44	7,780	56.9 <sup>^</sup>	(39.0-73.1)	17,582	62.6 <sup>^</sup>	(51.1-72.9)
45-64	16,000	65.2 <sup>^</sup>	(54.9-74.2)	39,258	65.1	(59.0-70.7)
65+	6,882	52.4 <sup>^</sup>	(42.4-62.2)	18,885	57.8	(51.6-63.7)
<b>Race</b>						
White, NH	40,825	61.0	(53.8-67.9)	100,111	63.1	(58.8-67.1)
Black, NH		#			#	
Hispanic		#			#	
Other, NH		#			#	
<b>Sex</b>						
male	30,857	67.5 <sup>^</sup>	(57.1-76.4)	66,013	65.9	(59.1-72.0)
female	23,983	57.6 <sup>^</sup>	(46.0-68.4)	60,059	64.5	(57.3-71.0)
<b>Age-adjusted<sup>&amp;</sup></b>		62.6	(55.9-68.9)		64.9	(60.4-69.2)

& Percent is age-adjusted to the 2000 United States Population.

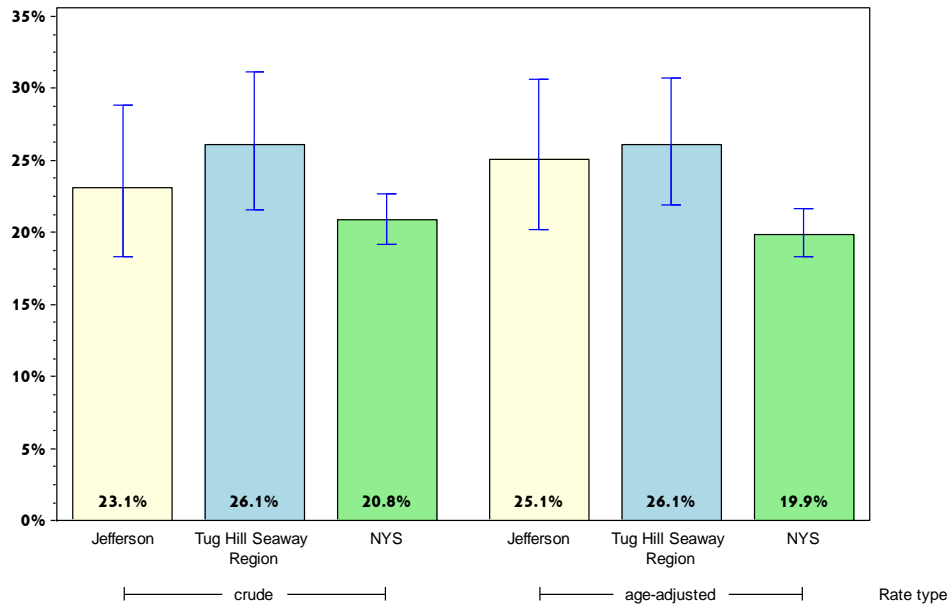
# Rates with <10 in the numerator or <50 in the denominator are suppressed.

<sup>^</sup> Highly variable rate (confidence interval with a half-width greater than 10).

# Jefferson

## Improve Health Status and Reduce Health Disparities

### Percentage of adults living with a disability\*



#### Jefferson County

#### Tug Hill Seaway

	Est. # of Adults	Percent	95% CI	Est. # of Adults	Percent	95% CI
<b>Total</b>	20,783	23.1	(18.3-28.8)	51,117	26.1	(21.6-31.1)
<b>Age</b>		#			#	
18-24		#			#	
25-34		#		10,730	26.6 <sup>^</sup>	(12.7-47.6)
35-44	3,086	22.0 <sup>^</sup>	(10.4-40.6)	5,540	19.2 <sup>^</sup>	(11.5-30.2)
45-64	9,215	36.0 <sup>^</sup>	(26.9-46.2)	19,618	32.5	(27.2-38.3)
65+	5,234	38.3	(29.5-47.9)	12,664	37.3	(31.8-43.1)
<b>Race</b>						
White, NH	16,804	24.3	(19.4-30.1)	41,444	25.5	(22.1-29.2)
Black, NH		#			#	
Hispanic		#			#	
Other, NH		#			#	
<b>Sex</b>						
male	12,017	25.7	(18.5-34.6)	29,021	28.6	(21.4-37.0)
female	8,766	20.3	(14.6-27.6)	22,096	23.4	(18.9-28.5)
<b>Age-adjusted<sup>&amp;</sup></b>		25.1	(20.2-30.6)		26.1	(21.9-30.8)

\* Limited activities (physical, mental, or emotional problems); need of special equipment (e.g. cane, wheel chair).

& Percent is age-adjusted to the 2000 United States Population.

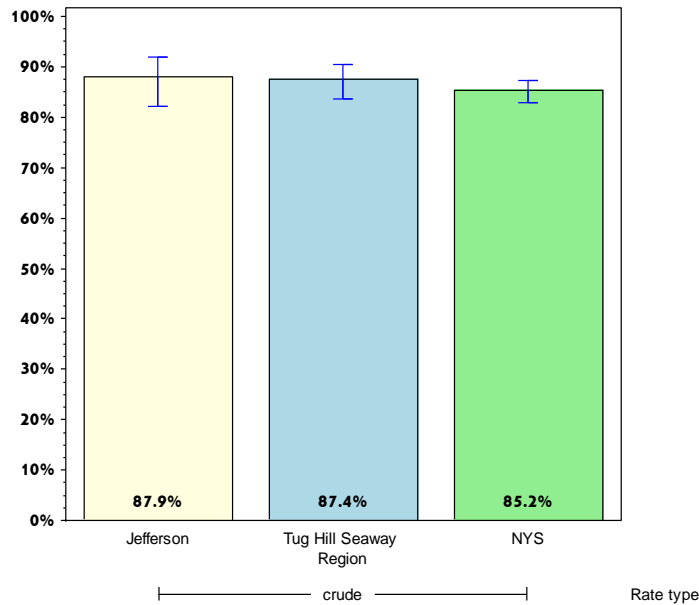
# Rates with <10 in the numerator or <50 in the denominator are suppressed.

<sup>^</sup> Highly variable rate (confidence interval with a half-width greater than 10).

# Jefferson

## Improve Health Status and Reduce Health Disparities

### Percentage of adults aged 18-64 years with healthcare coverage



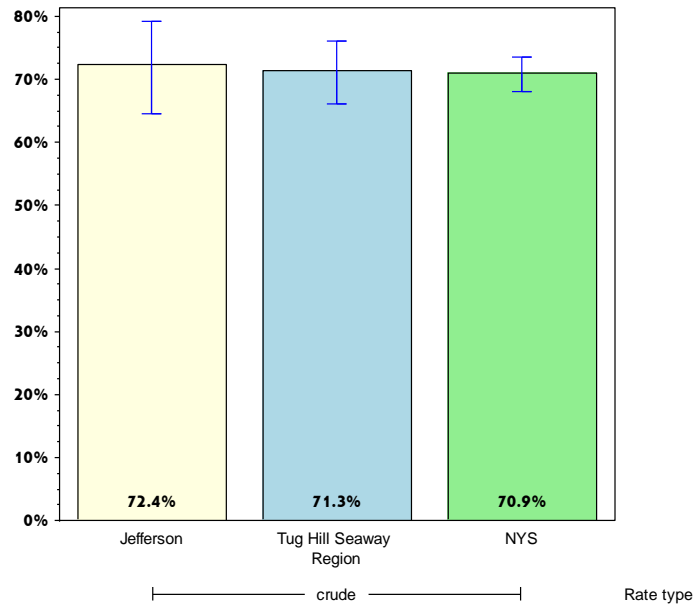
	Jefferson County			Tug Hill Seaway		
	Est. # of Adults	Percent	95% CI	Est. # of Adults	Percent	95% CI
<b>Total</b>	65,421	87.9	(82.1-92.0)	141,791	87.4	(83.6-90.4)
<b>Age<sup>+</sup></b>						
18-24						
25-34						
35-44						
45-64						
65+						
<b>Race</b>						
White, NH	47,261	86.2	(79.3-91.0)	112,009	86.5	(82.5-89.7)
Black, NH		#			#	
Hispanic		#			#	
Other, NH		#			#	
<b>Sex</b>						
male	35,284	88.0	(78.8-93.5)	73,377	86.8	(81.1-90.9)
female	30,137	87.7	(79.7-92.8)	68,414	88.2	(82.6-92.1)
<b>Age-adjusted<sup>+,&amp;</sup></b>						

& Percent is age-adjusted to the 2000 United States Population.  
 + Age-adjusted and age specific percent not generated for health indicators with age range limits.  
 # Rates with <10 in the numerator or <50 in the denominator are suppressed.

# Jefferson

## Improve Health Status and Reduce Health Disparities

Percentage of adults aged 18-64 years who saw a doctor for a routine checkup within the last year



	Jefferson County			Tug Hill Seaway		
	Est. # of Adults	Percent	95% CI	Est. # of Adults	Percent	95% CI
<b>Total</b>	54,573	72.4	(64.5-79.1)	116,297	71.3	(66.1-76.0)
<b>Age<sup>+</sup></b>						
18-24						
25-34						
35-44						
45-64						
65+						
<b>Race</b>						
White, NH	38,408	69.7	(61.3-76.9)	87,887	67.8	(62.6-72.5)
Black, NH		#			#	
Hispanic		#			#	
Other, NH		#			#	
<b>Sex</b>						
male	28,088	68.4 <sup>^</sup>	(56.6-78.2)	57,416	67.0	(59.1-74.0)
female	26,485	77.3	(67.6-84.7)	58,882	76.1	(69.4-81.8)
<b>Age-adjusted<sup>+,&amp;</sup></b>						

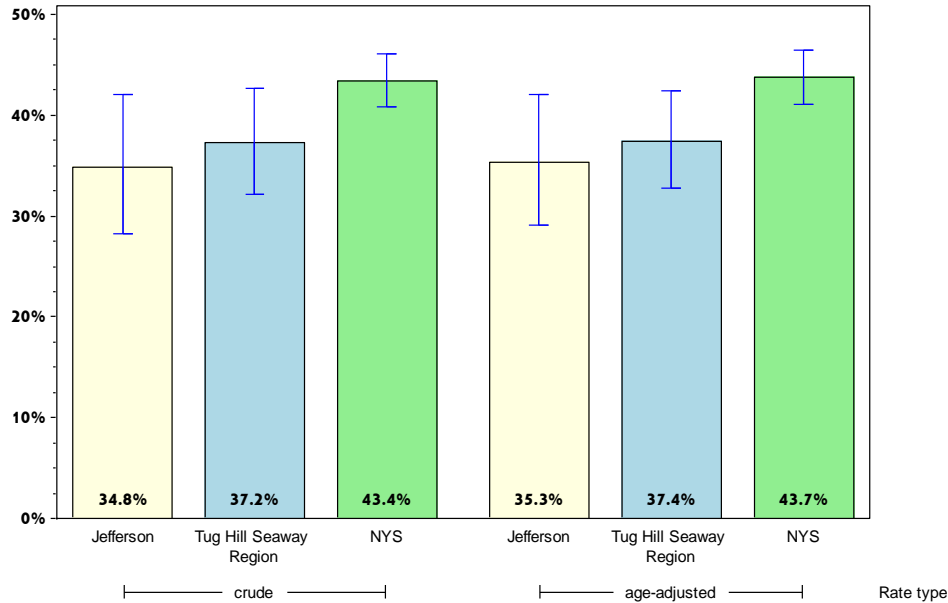
& Percent is age-adjusted to the 2000 United States Population.  
 + Age-adjusted and age specific percent not generated for health indicators with age range limits.  
 # Rates with <10 in the numerator or <50 in the denominator are suppressed.  
 ^ Highly variable rate (confidence interval with a half-width greater than 10).



# Jefferson

## Improve Health Status and Reduce Health Disparities

Percentage of adults experiencing housing insecurity in the past 12 months\*



### Jefferson County

### Tug Hill Seaway

	Est. # of Adults	Percent	95% CI	Est. # of Adults	Percent	95% CI
<b>Total</b>	28,067	34.8	(28.2-42.0)	66,115	37.2	(32.1-42.6)
<b>Age</b>		#			#	
18-24		#			#	
25-34		#		19,381	52.6 <sup>^</sup>	(37.0-67.8)
35-44	5,968	44.4 <sup>^</sup>	(28.4-61.7)	11,144	41.9 <sup>^</sup>	(31.6-53.0)
45-64	6,698	27.9	(20.7-36.5)	18,762	31.5	(26.3-37.1)
65+	3,438	26.9	(18.9-36.9)	7,945	25.2	(20.0-31.3)
<b>Race</b>						
White, NH	22,524	35.8	(29.6-42.5)	54,102	36.4	(32.3-40.7)
Black, NH		#			#	
Hispanic		#			#	
Other, NH		#			#	
<b>Sex</b>						
male	12,128	30.2 <sup>^</sup>	(21.4-40.8)	32,678	35.5	(27.6-44.3)
female	15,940	39.4 <sup>^</sup>	(29.8-49.8)	33,437	39.1	(33.1-45.5)
<b>Age-adjusted<sup>&amp;</sup></b>		35.3	(29.1-42.0)		37.4	(32.7-42.4)

\* Worried or stressed about having enough money to pay for rent or mortgage.

& Percent is age-adjusted to the 2000 United States Population.

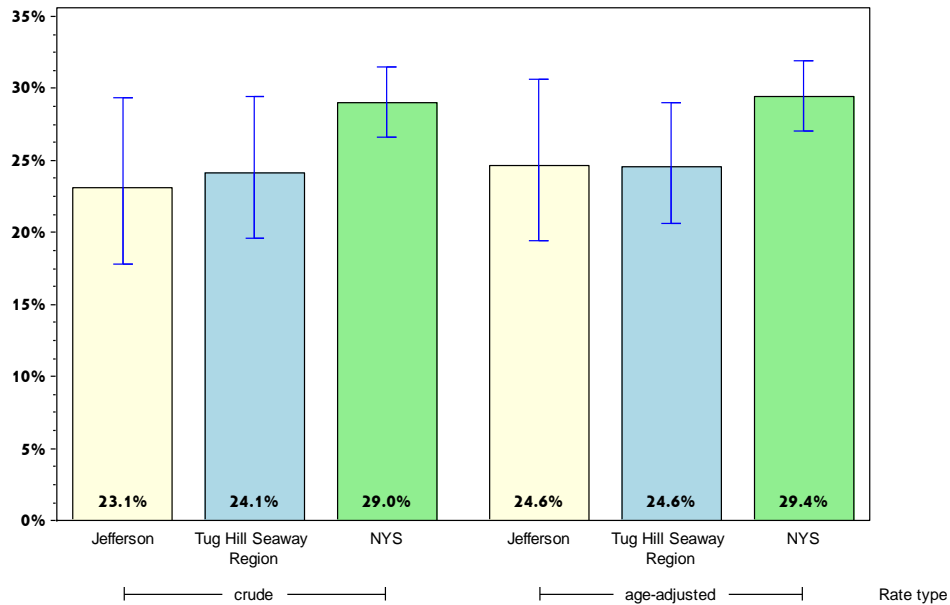
# Rates with <10 in the numerator or <50 in the denominator are suppressed.

<sup>^</sup> Highly variable rate (confidence interval with a half-width greater than 10).

# Jefferson

## Improve Health Status and Reduce Health Disparities

Percentage of adults experiencing food insecurity in the past 12 months\*



### Jefferson County

### Tug Hill Seaway

	Est. # of Adults	Percent	95% CI	Est. # of Adults	Percent	95% CI
<b>Total</b>	20,529	23.1	(17.8-29.3)	47,257	24.1	(19.6-29.4)
<b>Age</b>		#				
18-24		#		4,176	13.3 <sup>^</sup>	(7.1-23.6)
25-34	6,978	40.9 <sup>^</sup>	(24.6-59.6)	16,776	41.9 <sup>^</sup>	(26.8-58.6)
35-44	4,583	32.6 <sup>^</sup>	(19.0-50.0)	8,348	29.3 <sup>^</sup>	(20.4-40.1)
45-64	5,694	22.2	(15.4-30.9)	13,967	22.7	(18.2-28.0)
65+	1,825	13.7	(8.0-22.5)	3,947	11.9	(8.4-16.6)
<b>Race</b>						
White, NH	14,998	21.9	(16.9-27.9)	36,694	22.8	(19.4-26.6)
Black, NH		#			#	
Hispanic		#			#	
Other, NH		#			#	
<b>Sex</b>						
male	10,577	22.7 <sup>^</sup>	(15.0-32.7)	25,681	25.4	(18.0-34.6)
female	9,952	23.5	(16.9-31.7)	21,577	22.8	(18.5-27.8)
<b>Age-adjusted<sup>&amp;</sup></b>		24.6	(19.5-30.6)		24.6	(20.7-29.0)

\* Worried or stressed about having enough money to buy nutritious meals.

& Percent is age-adjusted to the 2000 United States Population.

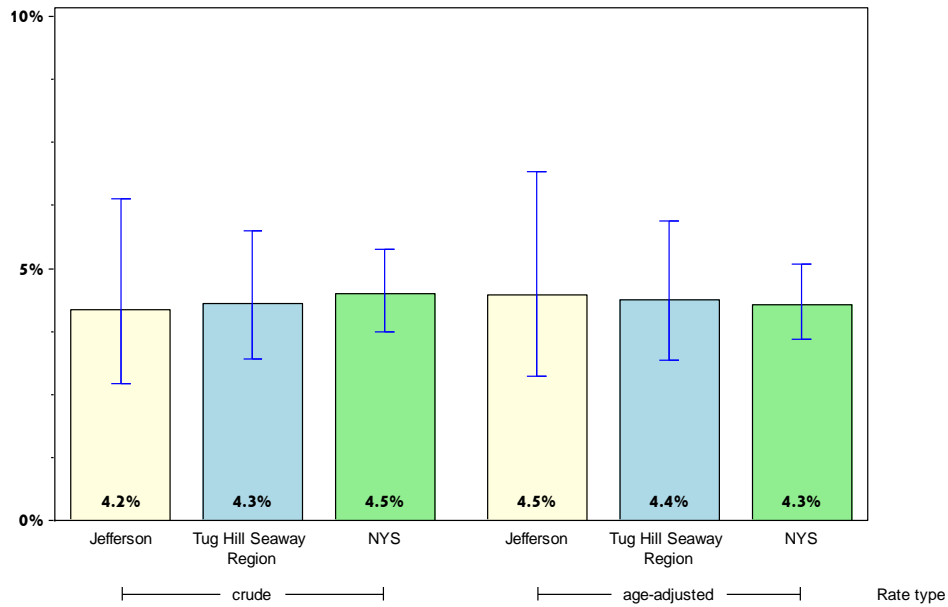
# Rates with <10 in the numerator or <50 in the denominator are suppressed.

<sup>^</sup> Highly variable rate (confidence interval with a half-width greater than 10).

# Jefferson

## Improve Health Status and Reduce Health Disparities

### Percentage of adults with poor self-reported health



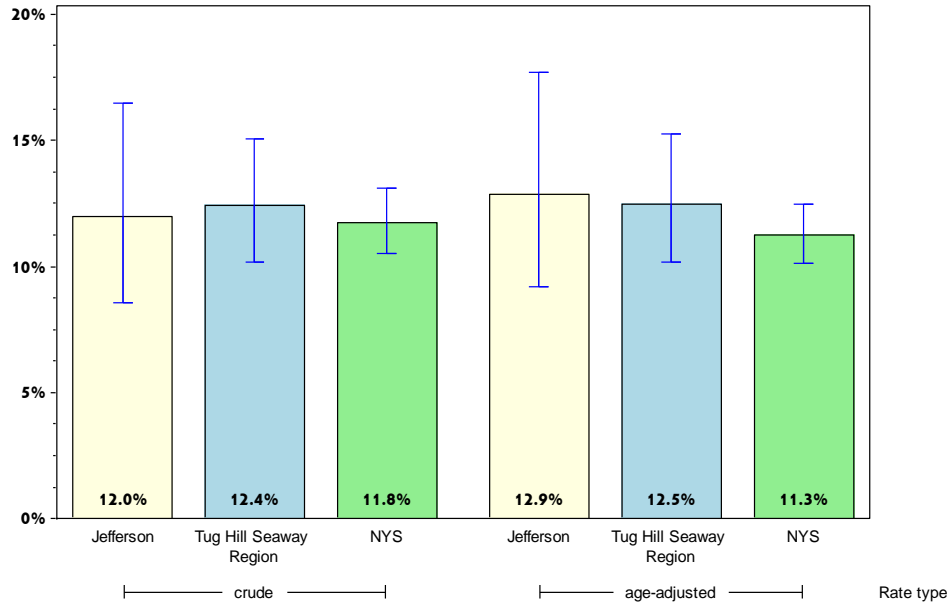
	Jefferson County			Tug Hill Seaway		
	Est. # of Adults	Percent	95% CI	Est. # of Adults	Percent	95% CI
<b>Total</b>	3,750	4.2	(2.7-6.4)	8,570	4.3	(3.2-5.7)
<b>Age</b>		#			#	
18-24		#			#	
25-34		#			#	
35-44		#			#	
45-64	1,679	6.5	(3.5-12.0)	4,140	6.6	(4.5-9.6)
65+	1,277	9.4	(5.3-16.3)	3,087	9.1	(6.1-13.3)
<b>Race</b>						
White, NH	3,692	5.3	(3.5-8.1)	8,512	5.2	(3.9-6.9)
Black, NH		#			#	
Hispanic		#			#	
Other, NH		#			#	
<b>Sex</b>						
male	1,719	3.7	(1.8-7.4)	4,252	4.2	(2.7-6.3)
female	2,031	4.7	(2.8-7.8)	4,319	4.5	(3.0-6.6)
<b>Age-adjusted<sup>&amp;</sup></b>		4.5	(2.9-6.9)		4.4	(3.2-5.9)

& Percent is age-adjusted to the 2000 United States Population.  
 # Rates with <10 in the numerator or <50 in the denominator are suppressed.

# Jefferson

## Improve Health Status and Reduce Health Disparities

Percentage of adults who report 14 or more days of poor physical health\*



### Jefferson County

### Tug Hill Seaway

	Est. # of Adults	Percent	95% CI	Est. # of Adults	Percent	95% CI
<b>Total</b>	10,549	12.0	(8.6-16.5)	23,709	12.4	(10.2-15.0)
<b>Age</b>		#			#	
18-24		#			#	
25-34		#		3,650	10.1	(5.6-17.6)
35-44		#		2,936	10.5 <sup>^</sup>	(5.0-20.7)
45-64	4,088	16.2	(10.0-25.2)	9,386	15.2	(11.5-19.8)
65+	3,075	23.7 <sup>^</sup>	(15.8-34.0)	6,361	19.5	(14.9-25.1)
<b>Race</b>						
White, NH	8,710	12.8	(9.1-17.8)	21,615	13.4	(11.0-16.2)
Black, NH		#			#	
Hispanic		#			#	
Other, NH		#			#	
<b>Sex</b>						
male	5,423	11.9	(7.2-19.1)	11,719	12.3	(9.1-16.3)
female	5,126	12.1	(7.8-18.2)	11,990	12.6	(9.6-16.2)
<b>Age-adjusted<sup>&amp;</sup></b>		12.9	(9.2-17.7)		12.5	(10.2-15.2)

\* Out of the past 30 days.

& Percent is age-adjusted to the 2000 United States Population.

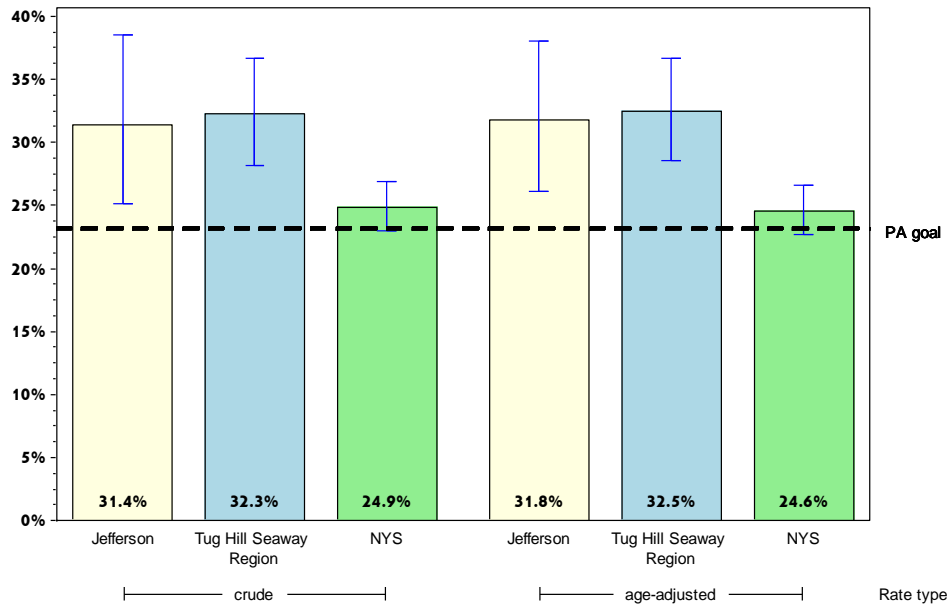
# Rates with <10 in the numerator or <50 in the denominator are suppressed.

<sup>^</sup> Highly variable rate (confidence interval with a half-width greater than 10).

# Jefferson

## Prevent Chronic Diseases

### Percentage of adults who are obese\*



#### Jefferson County

#### Tug Hill Seaway

	Est. # of Adults	Percent	95% CI	Est. # of Adults	Percent	95% CI
<b>Total</b>	27,265	31.4	(25.1-38.6)	59,714	32.3	(28.2-36.7)
<b>Age</b>						
18-24	#	#		5,244	17.5 <sup>^</sup>	(8.4-32.8)
25-34	8,690	52.4 <sup>^</sup>	(34.7-69.5)	15,666	47.1 <sup>^</sup>	(34.9-59.5)
35-44	2,991	23.4 <sup>^</sup>	(12.0-40.6)	7,664	28.3 <sup>^</sup>	(19.7-38.9)
45-64	8,488	33.9	(25.3-43.8)	21,525	35.9	(30.3-41.8)
65+	3,702	27.8	(20.4-36.7)	9,264	27.6	(22.7-33.0)
<b>Race</b>						
White, NH	22,589	33.8	(27.3-41.0)	53,993	34.6	(30.6-38.9)
Black, NH	#	#		#	#	
Hispanic	#	#		#	#	
Other, NH	#	#		#	#	
<b>Sex</b>						
male	16,369	35.0 <sup>^</sup>	(25.8-45.4)	34,846	35.6	(29.7-42.0)
female	10,896	27.3	(19.6-36.6)	24,869	28.5	(23.4-34.2)
<b>Age-adjusted<sup>&amp;</sup></b>		31.8	(26.2-38.0)		32.5	(28.6-36.6)

\* Obesity defined as a Body Mass Index (BMI)  $\geq 30$ . BMI is calculated based on weight and height.

& Percent is age-adjusted to the 2000 United States Population.

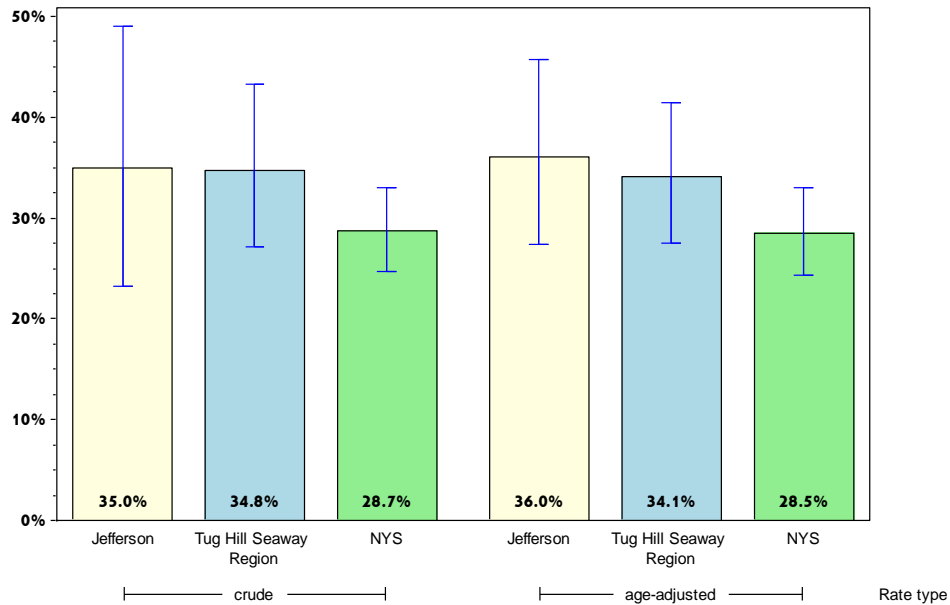
# Rates with  $<10$  in the numerator or  $<50$  in the denominator are suppressed.

<sup>^</sup> Highly variable rate (confidence interval with a half-width greater than 10).

# Jefferson

## Prevent Chronic Diseases

Percentage of adults with an annual household income less than \$25,000 who are obese\*



	Jefferson County			Tug Hill Seaway		
	Est. # of Adults	Percent	95% CI	Est. # of Adults	Percent	95% CI
<b>Total</b>	8,417	35.0 <sup>^</sup>	(23.2-49.0)	18,259	34.8	(27.1-43.3)
<b>Age</b>						
18-24		#			#	
25-34		#			#	
35-44		#			#	
45-64	2,501	35.3 <sup>^</sup>	(19.9-54.5)	5,551	33.3 <sup>^</sup>	(22.8-45.8)
65+	1,107	25.3 <sup>^</sup>	(13.9-41.7)	3,694	30.1	(22.3-39.3)
<b>Race</b>						
White, NH	7,439	42.4 <sup>^</sup>	(28.8-57.3)	17,234	40.4	(32.2-49.2)
Black, NH		#			#	
Hispanic		#			#	
Other, NH		#			#	
<b>Sex</b>						
male	4,479	35.3 <sup>^</sup>	(19.0-56.0)	10,132	37.1 <sup>^</sup>	(25.8-50.0)
female	3,938	34.7 <sup>^</sup>	(19.6-53.5)	8,128	32.2 <sup>^</sup>	(23.0-43.1)
<b>Age-adjusted<sup>&amp;</sup></b>		36.0	(27.4-45.8)		34.1	(27.5-41.4)

\* Obesity defined as a Body Mass Index (BMI)  $\geq 30$ . BMI is calculated based on weight and height.

& Percent is age-adjusted to the 2000 United States Population.

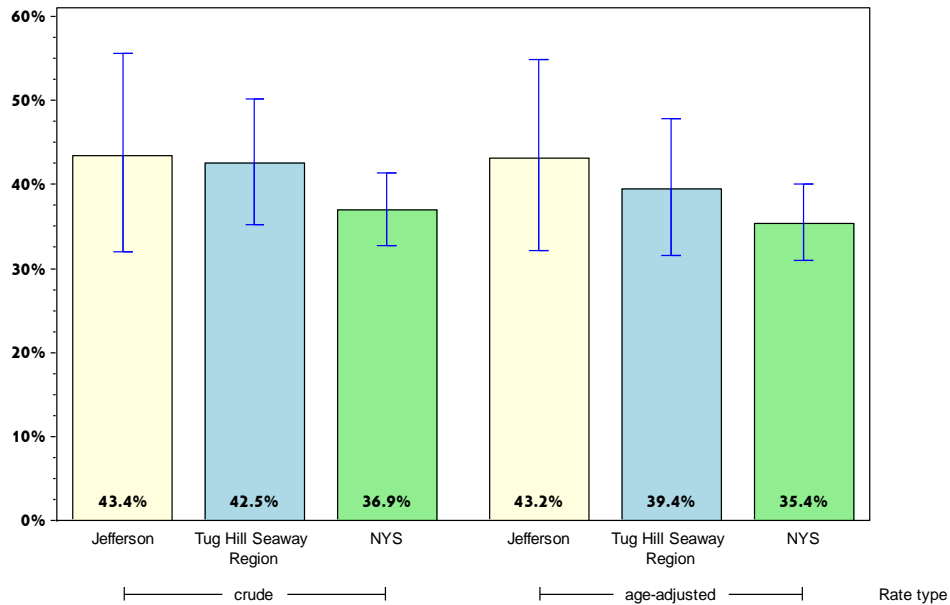
# Rates with  $< 10$  in the numerator or  $< 50$  in the denominator are suppressed.

<sup>^</sup> Highly variable rate (confidence interval with a half-width greater than 10).

# Jefferson

## Prevent Chronic Diseases

### Percentage of adults living with a disability who are obese\*



#### Jefferson County

#### Tug Hill Seaway

	Est. # of Adults	Percent	95% CI	Est. # of Adults	Percent	95% CI
<b>Total</b>	8,763	43.4 <sup>^</sup>	(32.0-55.6)	18,780	42.5	(35.2-50.1)
<b>Age</b>		#			#	
18-24		#			#	
25-34		#			#	
35-44		#			#	
45-64	3,494	38.3 <sup>^</sup>	(23.8-55.1)	8,051	42.2 <sup>^</sup>	(32.3-52.7)
65+	1,641	33.0 <sup>^</sup>	(21.1-47.4)	4,228	34.2	(26.0-43.4)
<b>Race</b>						
White, NH	7,288	44.8 <sup>^</sup>	(33.3-56.8)	17,258	44.0	(36.7-51.7)
Black, NH		#			#	
Hispanic		#			#	
Other, NH		#			#	
<b>Sex</b>						
male	4,770	40.0 <sup>^</sup>	(24.6-57.7)	9,396	38.4 <sup>^</sup>	(28.1-49.9)
female	3,993	48.4 <sup>^</sup>	(33.1-64.1)	9,385	47.5	(38.0-57.2)
<b>Age-adjusted<sup>&amp;</sup></b>		43.2 <sup>^</sup>	(32.2-54.9)		39.4	(31.6-47.8)

\* Obesity defined as a Body Mass Index (BMI)  $\geq 30$ . BMI is calculated based on weight and height. Limited activities (physical, mental, or emotional problems); need of special equipment (e.g. cane, wheel chair).

& Percent is age-adjusted to the 2000 United States Population.

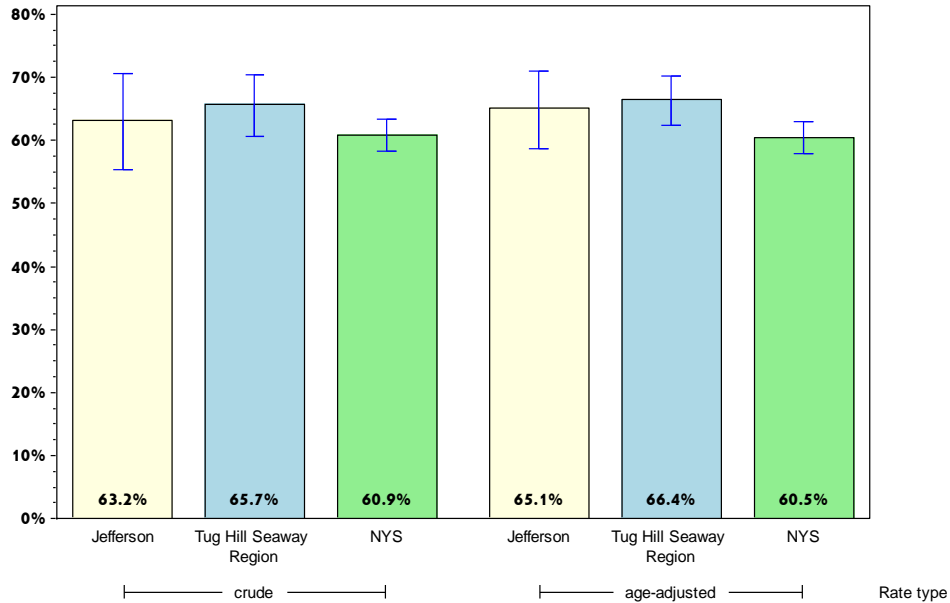
# Rates with  $<10$  in the numerator or  $<50$  in the denominator are suppressed.

<sup>^</sup> Highly variable rate (confidence interval with a half-width greater than 10).

# Jefferson

## Prevent Chronic Diseases

### Percentage of adults overweight or obese\*



#### Jefferson County

#### Tug Hill Seaway

	Est. # of Adults	Percent	95% CI	Est. # of Adults	Percent	95% CI
<b>Total</b>	54,849	63.2	(55.3-70.5)	121,643	65.7	(60.7-70.4)
<b>Age</b>		#				
18-24		#		10,139	33.9 <sup>^</sup>	(20.5-50.5)
25-34	12,434	75.0 <sup>^</sup>	(57.0-87.2)	25,413	76.3 <sup>^</sup>	(65.1-84.8)
35-44	6,962	54.4 <sup>^</sup>	(36.5-71.3)	17,232	63.7 <sup>^</sup>	(52.3-73.7)
45-64	18,873	75.4	(65.9-82.9)	45,015	75.0	(69.3-80.0)
65+	9,476	71.2	(61.7-79.1)	23,112	68.8	(63.0-74.1)
<b>Race</b>						
White, NH	44,207	66.2	(58.9-72.7)	106,346	68.2	(63.9-72.2)
Black, NH		#			#	
Hispanic		#			#	
Other, NH		#			#	
<b>Sex</b>						
male	32,238	68.9 <sup>^</sup>	(58.4-77.8)	71,264	72.8	(66.6-78.2)
female	22,611	56.6 <sup>^</sup>	(44.9-67.6)	50,380	57.7	(50.0-65.1)
<b>Age-adjusted<sup>&amp;</sup></b>		65.1	(58.7-71.0)		66.4	(62.3-70.3)

\* Defined as a Body Mass Index (BMI)  $\geq 25$ . BMI is calculated based on weight and height.

& Percent is age-adjusted to the 2000 United States Population.

# Rates with  $< 10$  in the numerator or  $< 50$  in the denominator are suppressed.

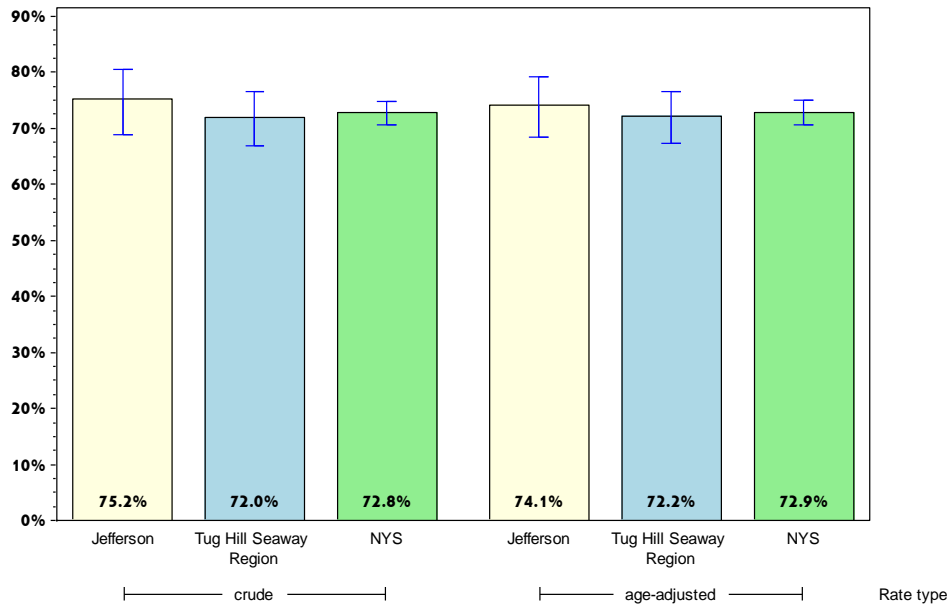
<sup>^</sup> Highly variable rate (confidence interval with a half-width greater than 10).



# Jefferson

## Prevent Chronic Diseases

Percentage of adults who participated in leisure time physical activity in the past 30 days\*



### Jefferson County

### Tug Hill Seaway

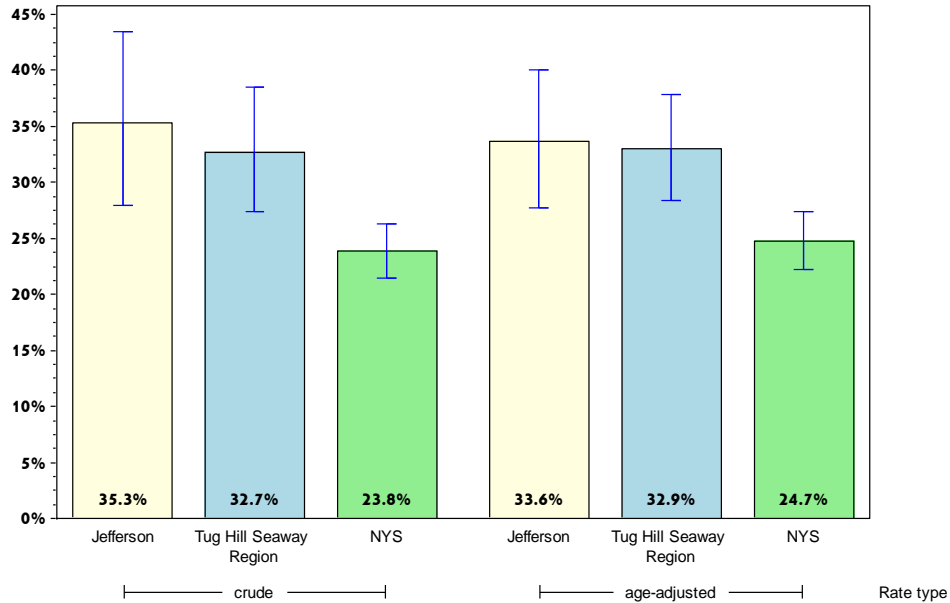
	Est. # of Adults	Percent	95% CI	Est. # of Adults	Percent	95% CI
<b>Total</b>	67,076	75.2	(68.9-80.5)	141,616	72.0	(66.8-76.6)
<b>Age</b>		#				
18-24		#		25,424	81.1 <sup>^</sup>	(64.0-91.2)
25-34	15,003	88.0 <sup>^</sup>	(75.9-94.4)	29,940	74.7 <sup>^</sup>	(53.1-88.5)
35-44	10,524	75.0 <sup>^</sup>	(57.2-87.0)	21,774	75.7 <sup>^</sup>	(65.2-83.7)
45-64	17,822	69.5	(59.6-77.8)	43,457	70.3	(64.5-75.5)
65+	7,702	57.3	(47.6-66.5)	20,676	61.6	(55.6-67.3)
<b>Race</b>						
White, NH	49,768	72.4	(65.8-78.2)	116,008	71.6	(67.6-75.3)
Black, NH		#			#	
Hispanic		#			#	
Other, NH		#			#	
<b>Sex</b>						
male	35,241	75.6	(65.9-83.2)	71,557	70.6	(61.9-78.0)
female	31,835	74.7	(66.5-81.5)	70,059	73.5	(68.0-78.3)
<b>Age-adjusted<sup>&amp;</sup></b>		74.1	(68.4-79.2)		72.2	(67.3-76.6)

\* Any physical activities or exercises such as running or walking  
 & Percent is age-adjusted to the 2000 United States Population.  
 # Rates with <10 in the numerator or <50 in the denominator are suppressed.  
 ^ Highly variable rate (confidence interval with a half-width greater than 10).

# Jefferson

## Prevent Chronic Diseases

### Percentage of adults who consume one or more sugary drinks daily\*



#### Jefferson County

#### Tug Hill Seaway

	Est. # of Adults	Percent	95% CI	Est. # of Adults	Percent	95% CI
<b>Total</b>	30,988	35.3	(27.9-43.4)	63,293	32.7	(27.4-38.5)
<b>Age</b>		#				
18-24		#		14,944	48.5 <sup>^</sup>	(30.9-66.5)
25-34	6,449	37.8 <sup>^</sup>	(23.0-55.4)	19,800	49.6 <sup>^</sup>	(34.7-64.6)
35-44	7,211	52.0 <sup>^</sup>	(35.4-68.1)	12,524	44.3 <sup>^</sup>	(33.7-55.4)
45-64	4,393	17.9	(11.4-27.0)	10,300	17.1	(13.1-21.9)
65+	1,845	13.9	(8.0-23.0)	5,481	16.6	(12.1-22.4)
<b>Race</b>						
White, NH	18,823	28.0	(21.7-35.3)	45,635	28.7	(24.6-33.2)
Black, NH		#			#	
Hispanic		#			#	
Other, NH		#			#	
<b>Sex</b>						
male	18,079	39.4 <sup>^</sup>	(29.7-49.9)	38,945	39.0	(31.2-47.3)
female	12,909	30.8 <sup>^</sup>	(20.1-44.0)	24,348	26.0	(19.7-33.5)
<b>Age-adjusted<sup>&amp;</sup></b>		33.6	(27.7-40.1)		32.9	(28.4-37.8)

\* Sugary drinks include regular soda, and sugar-sweetened drinks.

& Percent is age-adjusted to the 2000 United States Population.

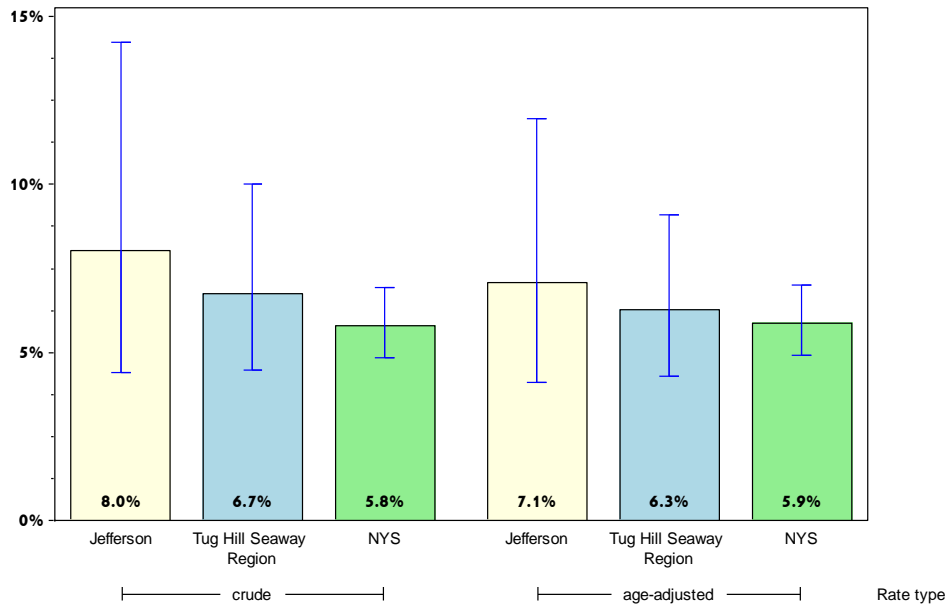
# Rates with <10 in the numerator or <50 in the denominator are suppressed.

<sup>^</sup> Highly variable rate (confidence interval with a half-width greater than 10).

# Jefferson

## Prevent Chronic Diseases

### Percentage of adults who consume fast-food three or more times per week



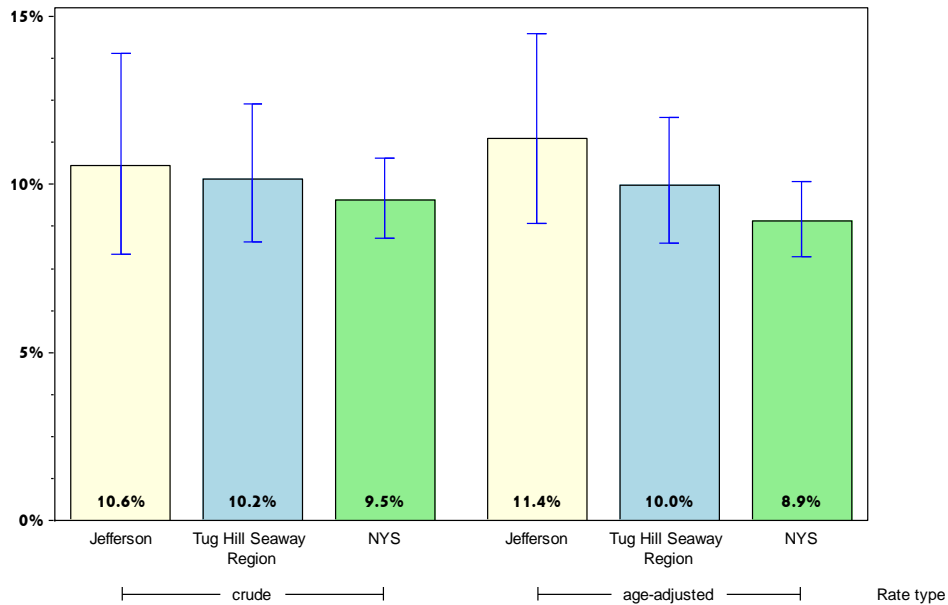
	Jefferson County			Tug Hill Seaway		
	Est. # of Adults	Percent	95% CI	Est. # of Adults	Percent	95% CI
<b>Total</b>	6,946	8.0	(4.4-14.2)	12,921	6.7	(4.5-10.0)
<b>Age</b>		#			#	
18-24		#			#	
25-34		#			#	
35-44		#			#	
45-64	1,901	7.8	(3.3-17.3)	3,521	5.9	(3.4-10.1)
65+		#		1,283	4.0	(2.1-7.3)
<b>Race</b>						
White, NH	6,175	9.3	(5.0-16.7)	11,944	7.6	(5.0-11.3)
Black, NH		#			#	
Hispanic		#			#	
Other, NH		#			#	
<b>Sex</b>						
male	5,226	11.6 <sup>^</sup>	(5.8-22.0)	9,263	9.3	(5.9-14.5)
female		#		3,658	4.0	(1.6-9.2)
<b>Age-adjusted<sup>&amp;</sup></b>		7.1	(4.1-11.9)		6.3	(4.3-9.1)

& Percent is age-adjusted to the 2000 United States Population.  
 # Rates with <10 in the numerator or <50 in the denominator are suppressed.  
 ^ Highly variable rate (confidence interval with a half-width greater than 10).

# Jefferson

## Prevent Chronic Diseases

### Percentage of adults with physician diagnosed diabetes\*



#### Jefferson County

#### Tug Hill Seaway

	Est. # of Adults	Percent	95% CI	Est. # of Adults	Percent	95% CI
<b>Total</b>	9,535	10.6	(7.9-13.9)	20,276	10.2	(8.3-12.4)
<b>Age</b>		#			#	
18-24		#			#	
25-34		#			#	
35-44		#			#	
45-64	4,119	16.0	(10.8-23.2)	8,231	13.1	(10.1-16.8)
65+	4,279	31.0 <sup>^</sup>	(22.1-41.5)	8,650	25.2	(20.2-30.9)
<b>Race</b>						
White, NH	8,548	12.3	(9.3-16.1)	18,618	11.3	(9.3-13.7)
Black, NH		#			#	
Hispanic		#			#	
Other, NH		#			#	
<b>Sex</b>						
male	4,520	9.6	(6.4-14.2)	10,477	10.2	(7.4-13.8)
female	5,015	11.6	(7.8-16.9)	9,799	10.1	(7.8-13.0)
<b>Age-adjusted<sup>&amp;</sup></b>		11.4	(8.8-14.5)		10.0	(8.3-12.0)

\* As diagnosed by a health professional.

& Percent is age-adjusted to the 2000 United States Population.

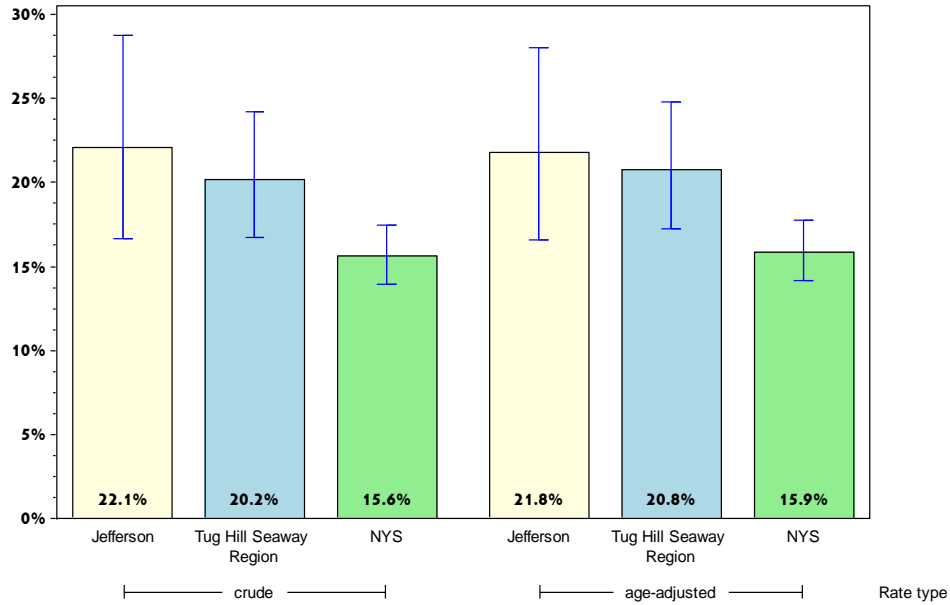
# Rates with <10 in the numerator or <50 in the denominator are suppressed.

<sup>^</sup> Highly variable rate (confidence interval with a half-width greater than 10).

# Jefferson

## Prevent Chronic Diseases

### Percentage of adults who are current smokers



#### Jefferson County

#### Tug Hill Seaway

	Est. # of Adults	Percent	95% CI	Est. # of Adults	Percent	95% CI
<b>Total</b>	19,667	22.1	(16.6-28.7)	39,735	20.2	(16.7-24.2)
<b>Age</b>		#				
18-24		#		8,005	25.7 <sup>^</sup>	(13.9-42.6)
25-34	2,820	16.3 <sup>^</sup>	(8.0-30.4)	8,331	20.7 <sup>^</sup>	(12.7-31.8)
35-44	4,126	29.4 <sup>^</sup>	(15.8-48.1)	8,447	29.5 <sup>^</sup>	(20.4-40.8)
45-64	5,955	23.3 <sup>^</sup>	(15.3-33.9)	11,760	18.9	(14.6-24.2)
65+	1,257	9.6	(5.3-16.7)	3,023	9.0	(6.1-13.1)
<b>Race</b>						
White, NH	15,717	23.0	(17.1-30.2)	34,300	21.2	(17.6-25.3)
Black, NH		#			#	
Hispanic		#			#	
Other, NH		#			#	
<b>Sex</b>						
male	13,704	29.5 <sup>^</sup>	(20.7-40.2)	22,900	22.6	(17.3-29.0)
female	5,963	14.0	(9.3-20.4)	16,835	17.6	(13.6-22.6)
<b>Age-adjusted<sup>&amp;</sup></b>		21.8	(16.6-28.0)		20.8	(17.3-24.8)

& Percent is age-adjusted to the 2000 United States Population.

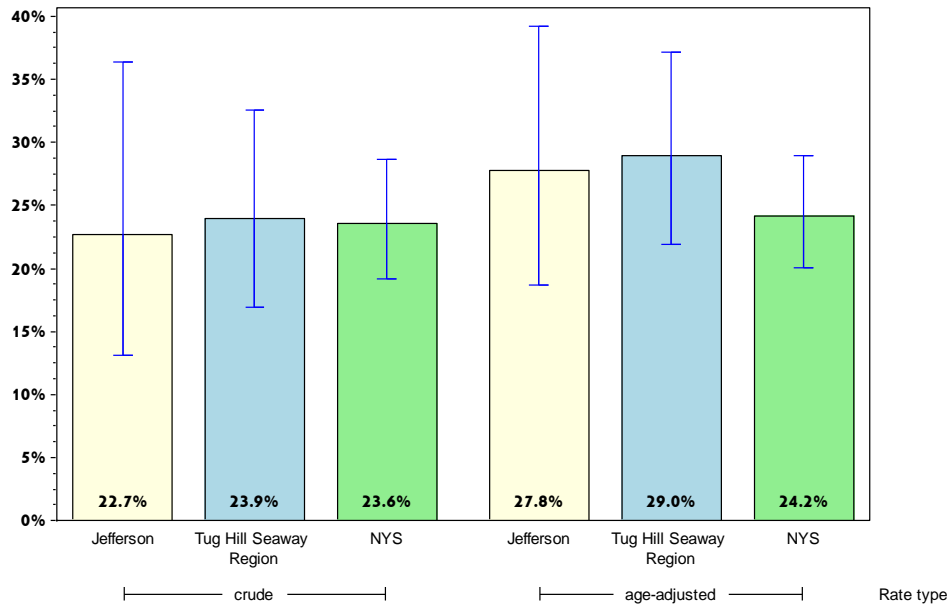
# Rates with <10 in the numerator or <50 in the denominator are suppressed.

<sup>^</sup> Highly variable rate (confidence interval with a half-width greater than 10).

# Jefferson

## Prevent Chronic Diseases

Percentage of adults with annual household income less than \$25,000 who are current smokers



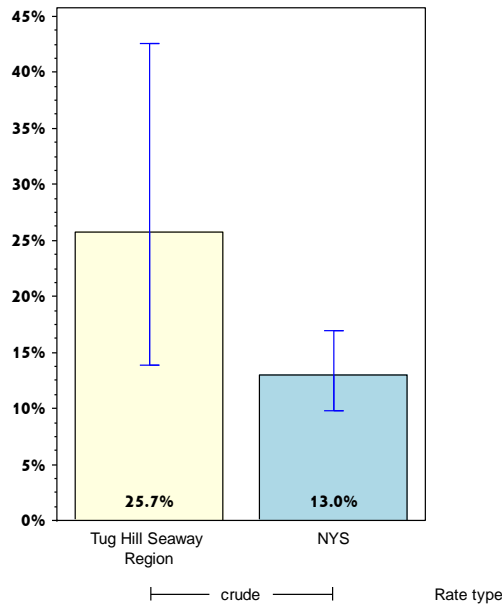
	Jefferson County			Tug Hill Seaway		
	Est. # of Adults	Percent	95% CI	Est. # of Adults	Percent	95% CI
<b>Total</b>	5,550	22.7 <sup>^</sup>	(13.1-36.3)	13,777	23.9	(17.0-32.6)
<b>Age</b>		#			#	
18-24		#			#	
25-34		#			#	
35-44		#			#	
45-64	2,916	40.6 <sup>^</sup>	(21.6-63.0)	4,736	28.0 <sup>^</sup>	(17.0-42.4)
65+		#		1,098	9.0	(4.7-16.4)
<b>Race</b>						
White, NH	2,815	15.8 <sup>^</sup>	(7.9-29.1)	10,304	23.9	(17.2-32.2)
Black, NH		#			#	
Hispanic		#			#	
Other, NH		#			#	
<b>Sex</b>						
male	4,410	34.5 <sup>^</sup>	(18.8-54.6)	9,217	28.9 <sup>^</sup>	(17.7-43.3)
female	1,140	9.8 <sup>^</sup>	(2.9-28.2)	4,560	17.7	(11.0-27.3)
<b>Age-adjusted<sup>&amp;</sup></b>		27.8 <sup>^</sup>	(18.7-39.2)		29.0	(21.9-37.2)

& Percent is age-adjusted to the 2000 United States Population.  
 # Rates with <10 in the numerator or <50 in the denominator are suppressed.  
 ^ Highly variable rate (confidence interval with a half-width greater than 10).

# Jefferson

## Prevent Chronic Diseases

### Percentage of adults aged 18-24 years who are current smokers



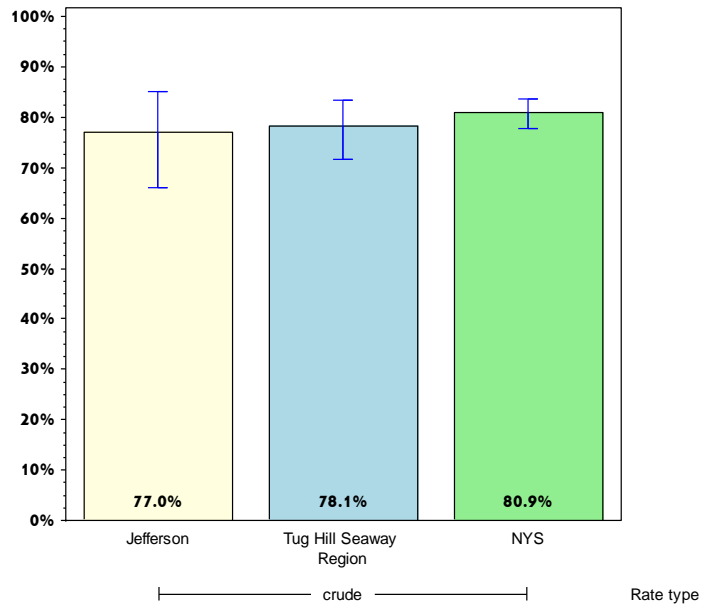
	Jefferson County			Tug Hill Seaway		
	Est. # of Adults	Percent	95% CI	Est. # of Adults	Percent	95% CI
<b>Total</b>		#		8,005	25.7 <sup>^</sup>	(13.9-42.6)
<b>Age<sup>+</sup></b>						
18-24						
25-34						
35-44						
45-64						
65+						
<b>Race</b>						
White, NH		#		7,560	34.9 <sup>^</sup>	(20.1-53.4)
Black, NH		#			#	
Hispanic		#			#	
Other, NH		#			#	
<b>Sex</b>						
male		#			#	
female		#			#	
<b>Age-adjusted<sup>+,&amp;</sup></b>						

& Percent is age-adjusted to the 2000 United States Population.  
 + Age-adjusted and age specific percent not generated for health indicators with age range limits.  
 # Rates with <10 in the numerator or <50 in the denominator are suppressed.  
 ^ Highly variable rate (confidence interval with a half-width greater than 10).

# Jefferson

## Prevent Chronic Diseases

Percentage of women aged 50-74 years receiving breast cancer screening based on recent guidelines\*



### Jefferson County

### Tug Hill Seaway

	Est. # of Adults	Percent	95% CI	Est. # of Adults	Percent	95% CI
<b>Total</b>	8,689	77.0 <sup>^</sup>	(66.0-85.2)	24,874	78.1	(71.7-83.4)
<b>Age<sup>+</sup></b>						
18-24						
25-34						
35-44						
45-64						
65+						
<b>Race</b>						
White, NH	8,112	76.4 <sup>^</sup>	(65.1-84.9)	22,475	77.5	(71.3-82.6)
Black, NH		#			#	
Hispanic		#			#	
Other, NH		#			#	
<b>Sex</b>						
male		#			#	
female	8,689	77.0 <sup>^</sup>	(66.0-85.2)	24,874	78.1	(71.7-83.4)
<b>Age-adjusted<sup>+,&amp;</sup></b>						

\* Mammogram within past 2 years.

& Percent is age-adjusted to the 2000 United States Population.

+ Age-adjusted and age specific percent not generated for health indicators with age range limits.

# Rates with <10 in the numerator or <50 in the denominator are suppressed.

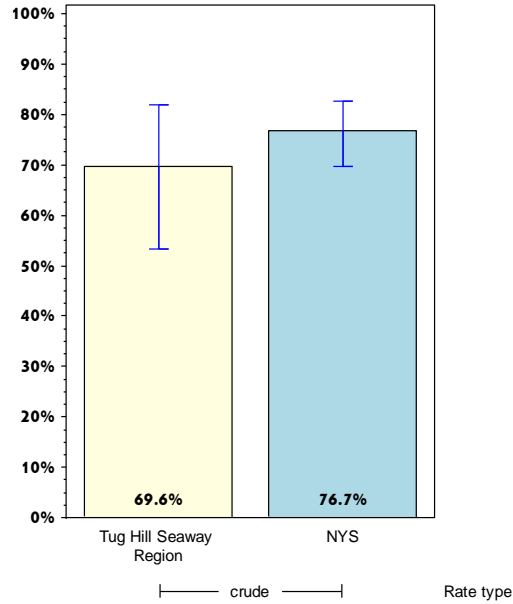
<sup>^</sup> Highly variable rate (confidence interval with a half-width greater than 10).



# Jefferson

## Prevent Chronic Diseases

Percentage of women aged 50-74 years with annual household income of less than \$25,000 receiving breast cancer screening based on recent guidelines\*



	Jefferson County			Tug Hill Seaway		
	Est. # of Adults	Percent	95% CI	Est. # of Adults	Percent	95% CI
<b>Total</b>		#		6,822	69.6 <sup>^</sup>	(53.4-82.0)
<b>Age<sup>+</sup></b>						
18-24						
25-34						
35-44						
45-64						
65+						
<b>Race</b>						
White, NH		#		4,804	63.0 <sup>^</sup>	(49.5-74.7)
Black, NH		#			#	
Hispanic		#			#	
Other, NH		#			#	
<b>Sex</b>						
male		#			#	
female		#		6,822	69.6 <sup>^</sup>	(53.4-82.0)
<b>Age-adjusted<sup>+,&amp;</sup></b>						

\* Mammogram within past 2 years.

& Percent is age-adjusted to the 2000 United States Population.

+ Age-adjusted and age specific percent not generated for health indicators with age range limits.

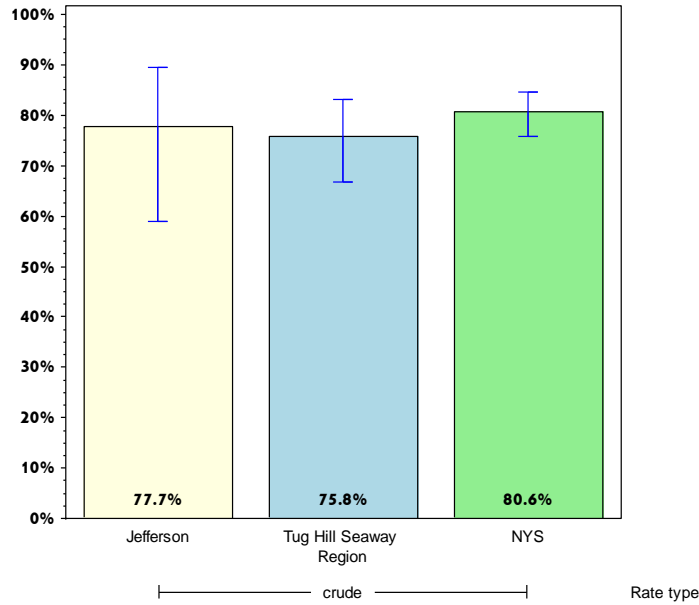
# Rates with <10 in the numerator or <50 in the denominator are suppressed.

<sup>^</sup> Highly variable rate (confidence interval with a half-width greater than 10).

# Jefferson

## Prevent Chronic Diseases

Percentage of women aged 21-65 years receiving cervical cancer screening based on recent guidelines\*



### Jefferson County

### Tug Hill Seaway

	Est. # of Adults	Percent	95% CI	Est. # of Adults	Percent	95% CI
<b>Total</b>	25,165	77.7 <sup>^</sup>	(58.9-89.4)	52,368	75.8	(66.6-83.1)
<b>Age<sup>+</sup></b>						
18-24						
25-34						
35-44						
45-64						
65+						
<b>Race</b>						
White, NH	19,860	83.4	(74.5-89.6)	43,981	77.2	(70.8-82.5)
Black, NH		#			#	
Hispanic		#			#	
Other, NH		#			#	
<b>Sex</b>						
male		#			#	
female	25,165	77.7 <sup>^</sup>	(58.9-89.4)	52,368	75.8	(66.6-83.1)
<b>Age-adjusted<sup>+,&amp;</sup></b>						

\* Pap test within past 3 years.

& Percent is age-adjusted to the 2000 United States Population.

+ Age-adjusted and age specific percent not generated for health indicators with age range limits.

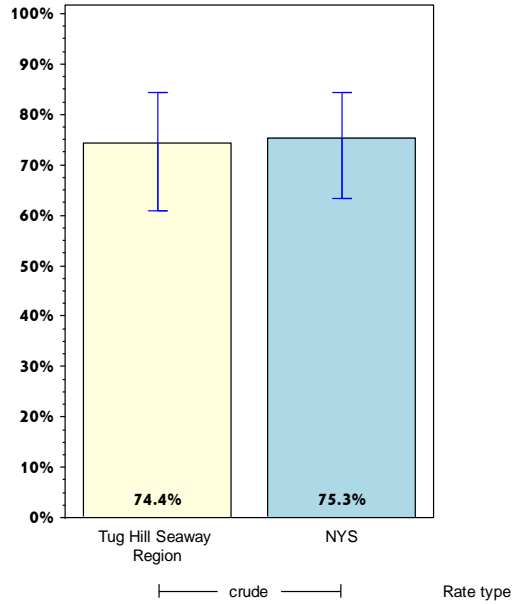
# Rates with <10 in the numerator or <50 in the denominator are suppressed.

<sup>^</sup> Highly variable rate (confidence interval with a half-width greater than 10).

# Jefferson

## Prevent Chronic Diseases

Percentage of women aged 21-65 years with annual household income of less than \$25,000 receiving cervical cancer screening based on recent guidelines\*



	Jefferson County			Tug Hill Seaway		
	Est. # of Adults	Percent	95% CI	Est. # of Adults	Percent	95% CI
<b>Total</b>		#		12,715	74.4 <sup>^</sup>	(60.8-84.4)
<b>Age<sup>+</sup></b>						
18-24						
25-34						
35-44						
45-64						
65+						
<b>Race</b>						
White, NH		#		9,415	70.7 <sup>^</sup>	(56.6-81.7)
Black, NH		#			#	
Hispanic		#			#	
Other, NH		#			#	
<b>Sex</b>						
male		#			#	
female		#		12,715	74.4 <sup>^</sup>	(60.8-84.4)
<b>Age-adjusted<sup>+,&amp;</sup></b>						

\* Pap test within past 3 years.

& Percent is age-adjusted to the 2000 United States Population.

+ Age-adjusted and age specific percent not generated for health indicators with age range limits.

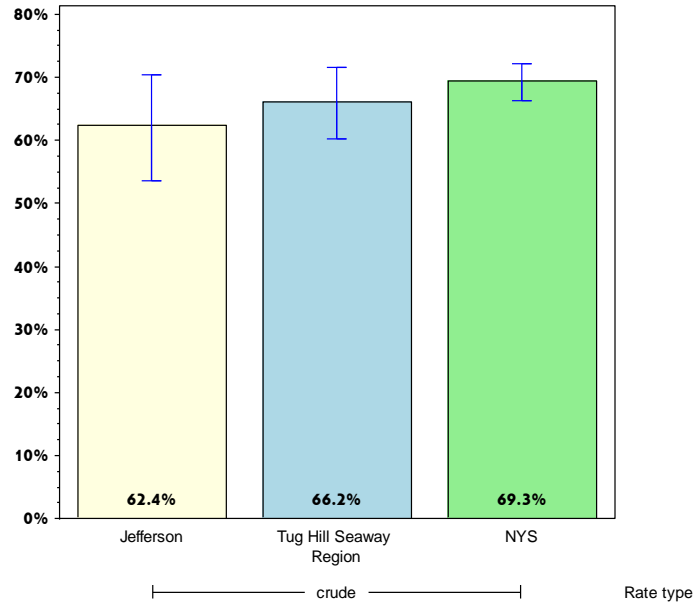
# Rates with <10 in the numerator or <50 in the denominator are suppressed.

<sup>^</sup> Highly variable rate (confidence interval with a half-width greater than 10).

# Jefferson

## Prevent Chronic Diseases

Percentage of adults aged 50-75 years receiving colorectal cancer screening based on recent guidelines\*



### Jefferson County

### Tug Hill Seaway

	Est. # of Adults	Percent	95% CI	Est. # of Adults	Percent	95% CI
<b>Total</b>	17,099	62.4	(53.7-70.3)	44,151	66.2	(60.3-71.6)
<b>Age<sup>+</sup></b>						
18-24						
25-34						
35-44						
45-64						
65+						
<b>Race</b>						
White, NH	14,318	58.7	(50.0-67.0)	40,417	66.5	(61.5-71.2)
Black, NH		#			#	
Hispanic		#			#	
Other, NH		#			#	
<b>Sex</b>						
male	10,574	66.3 <sup>^</sup>	(53.8-76.9)	22,707	66.3	(58.7-73.2)
female	6,524	56.9 <sup>^</sup>	(45.1-67.9)	21,443	66.0	(56.8-74.2)
<b>Age-adjusted<sup>+,&amp;</sup></b>						

\* Blood stool test within 1 year, or sigmoidoscopy within 5 years with blood stool test within 3 years, or colonoscopy within 10 years.

& Percent is age-adjusted to the 2000 United States Population.

+ Age-adjusted and age specific percent not generated for health indicators with age range limits.

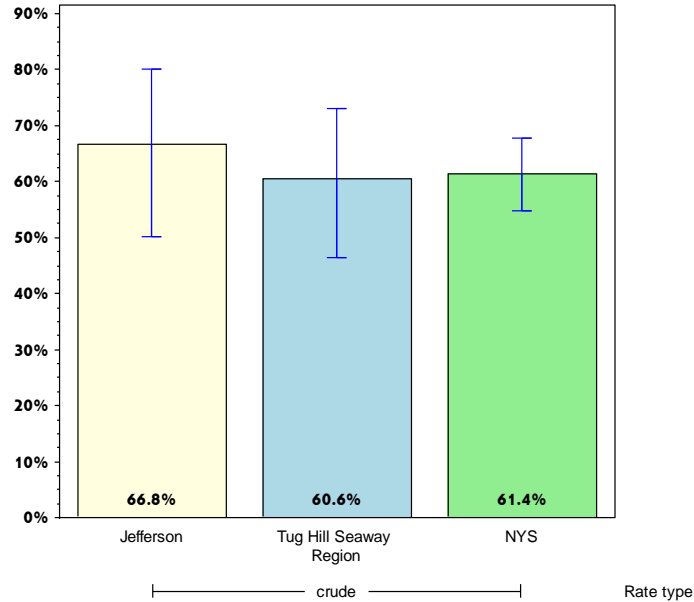
# Rates with <10 in the numerator or <50 in the denominator are suppressed.

<sup>^</sup> Highly variable rate (confidence interval with a half-width greater than 10).

# Jefferson

## Prevent Chronic Diseases

Percentage of adults aged 50-75 years with annual household income less than \$25,000 receiving colorectal cancer screening based on recent guidelines\*



	Jefferson County			Tug Hill Seaway		
	Est. # of Adults	Percent	95% CI	Est. # of Adults	Percent	95% CI
<b>Total Age<sup>+</sup></b>	4,965	66.8 <sup>^</sup>	(50.2-80.0)	10,963	60.6 <sup>^</sup>	(46.4-73.1)
18-24						
25-34						
35-44						
45-64						
65+						
<b>Race</b>						
White, NH	3,263	59.5 <sup>^</sup>	(43.1-74.0)	8,925	63.4	(54.0-71.8)
Black, NH		#			#	
Hispanic		#			#	
Other, NH		#			#	
<b>Sex</b>						
male		#		5,943	75.3 <sup>^</sup>	(62.5-84.8)
female		#		5,020	49.2 <sup>^</sup>	(31.5-67.0)
<b>Age-adjusted<sup>+,&amp;</sup></b>						

\* Blood stool test within 1 year, or sigmoidoscopy within 5 years with blood stool test within 3 years, or colonoscopy within 10 years.

& Percent is age-adjusted to the 2000 United States Population.

+ Age-adjusted and age specific percent not generated for health indicators with age range limits.

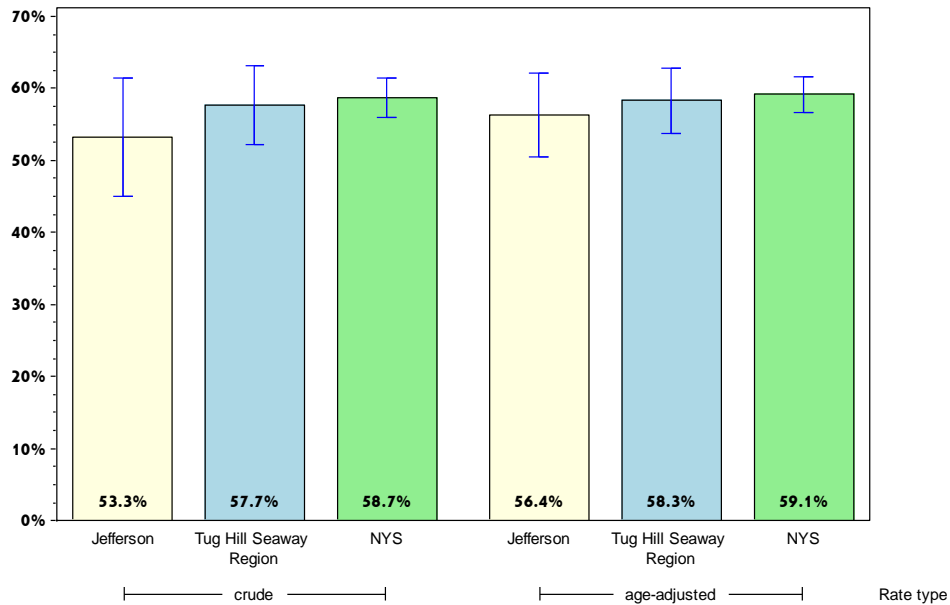
# Rates with <10 in the numerator or <50 in the denominator are suppressed.

<sup>^</sup> Highly variable rate (confidence interval with a half-width greater than 10).

# Jefferson

## Prevent Chronic Diseases

Percentage of adults who had a test for high blood sugar or diabetes within the past three years



### Jefferson County

### Tug Hill Seaway

	Est. # of Adults	Percent	95% CI	Est. # of Adults	Percent	95% CI
<b>Total</b>	41,328	53.3	(45.0-61.4)	100,406	57.7	(52.1-63.1)
<b>Age</b>		#				
18-24		#		9,640	31.2 <sup>^</sup>	(16.4-51.0)
25-34	10,162	62.3 <sup>^</sup>	(44.8-77.0)	24,202	64.3 <sup>^</sup>	(50.4-76.2)
35-44	4,008	31.0 <sup>^</sup>	(18.1-47.8)	11,363	41.8 <sup>^</sup>	(31.7-52.7)
45-64	15,256	73.1	(63.2-81.2)	35,594	67.4	(61.0-73.2)
65+	6,839	76.4	(66.6-84.0)	18,919	77.9	(72.2-82.6)
<b>Race</b>						
White, NH	32,885	56.9	(48.8-64.6)	80,591	57.4	(52.5-62.1)
Black, NH		#			#	
Hispanic		#			#	
Other, NH		#			#	
<b>Sex</b>						
male	21,389	53.1 <sup>^</sup>	(41.9-64.1)	48,443	54.2	(46.2-62.1)
female	19,939	53.4 <sup>^</sup>	(41.2-65.2)	51,962	61.3	(53.5-68.6)
<b>Age-adjusted<sup>&amp;</sup></b>		56.4	(50.4-62.2)		58.3	(53.7-62.9)

& Percent is age-adjusted to the 2000 United States Population.

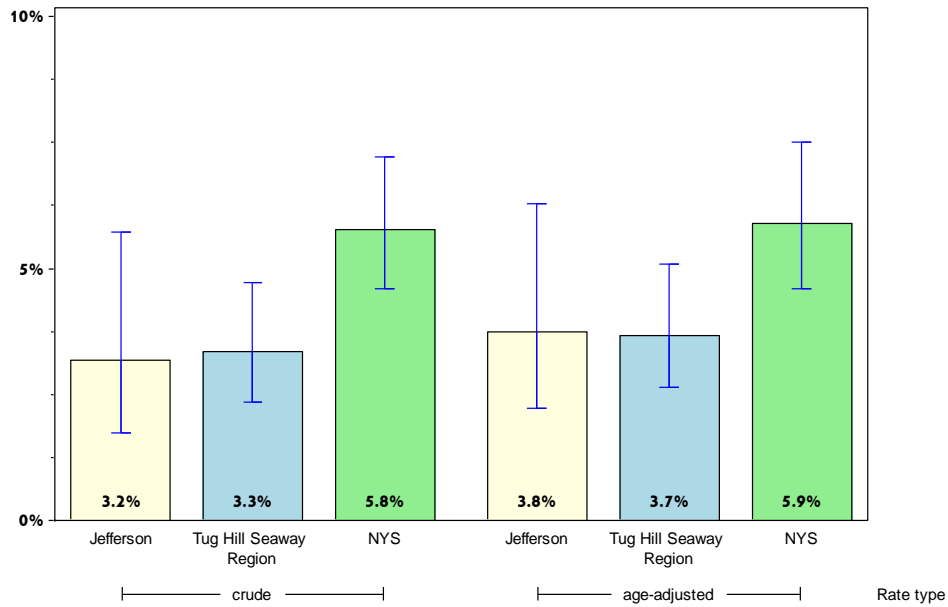
# Rates with <10 in the numerator or <50 in the denominator are suppressed.

<sup>^</sup> Highly variable rate (confidence interval with a half-width greater than 10).

# Jefferson

## Prevent Chronic Diseases

### Percentage of adults with physician-diagnosed prediabetes



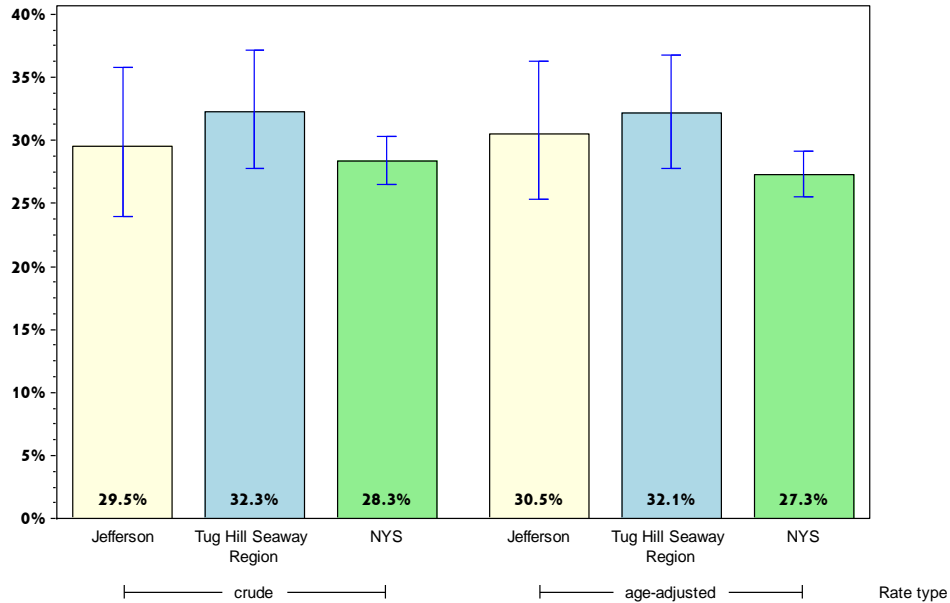
	Jefferson County			Tug Hill Seaway		
	Est. # of Adults	Percent	95% CI	Est. # of Adults	Percent	95% CI
<b>Total</b>	2,550	3.2	(1.7-5.7)	5,948	3.3	(2.3-4.7)
<b>Age</b>		#			#	
18-24		#			#	
25-34		#			#	
35-44		#			#	
45-64	771	3.6	(1.7-7.4)	1,837	3.4	(2.0-5.7)
65+	698	7.6	(4.1-13.9)	2,135	8.5	(5.4-13.1)
<b>Race</b>						
White, NH	1,961	3.2	(1.9-5.4)	5,121	3.5	(2.6-4.9)
Black, NH		#			#	
Hispanic		#			#	
Other, NH		#			#	
<b>Sex</b>						
male		#		1,761	1.9	(1.1-3.4)
female	1,666	4.4	(2.0-9.5)	4,187	4.8	(3.1-7.4)
<b>Age-adjusted<sup>&amp;</sup></b>		3.8	(2.2-6.3)		3.7	(2.6-5.1)

& Percent is age-adjusted to the 2000 United States Population.  
 # Rates with <10 in the numerator or <50 in the denominator are suppressed.

# Jefferson

## Prevent Chronic Diseases

### Percentage of adults with physician-diagnosed high blood pressure



#### Jefferson County

#### Tug Hill Seaway

	Est. # of Adults	Percent	95% CI	Est. # of Adults	Percent	95% CI
<b>Total</b>	26,577	29.5	(24.0-35.7)	64,468	32.3	(27.8-37.2)
<b>Age</b>		#				
18-24		#		4,212	13.4 <sup>^</sup>	(6.4-26.0)
25-34		#		9,689	23.8 <sup>^</sup>	(10.2-46.2)
35-44	2,041	14.8 <sup>^</sup>	(6.0-31.9)	6,274	21.7 <sup>^</sup>	(14.1-31.8)
45-64	9,938	38.8	(29.9-48.5)	22,975	36.5	(31.2-42.3)
65+	8,693	63.0 <sup>^</sup>	(52.8-72.2)	20,853	60.9	(54.8-66.7)
<b>Race</b>						
White, NH	22,707	32.8	(27.2-38.9)	55,282	33.6	(30.1-37.3)
Black, NH		#			#	
Hispanic		#			#	
Other, NH		#			#	
<b>Sex</b>						
male	17,066	36.5	(27.7-46.3)	39,069	38.2	(30.8-46.1)
female	9,511	22.0	(16.6-28.5)	25,399	26.1	(22.0-30.8)
<b>Age-adjusted<sup>&amp;</sup></b>		30.5	(25.3-36.2)		32.1	(27.8-36.8)

& Percent is age-adjusted to the 2000 United States Population.

# Rates with <10 in the numerator or <50 in the denominator are suppressed.

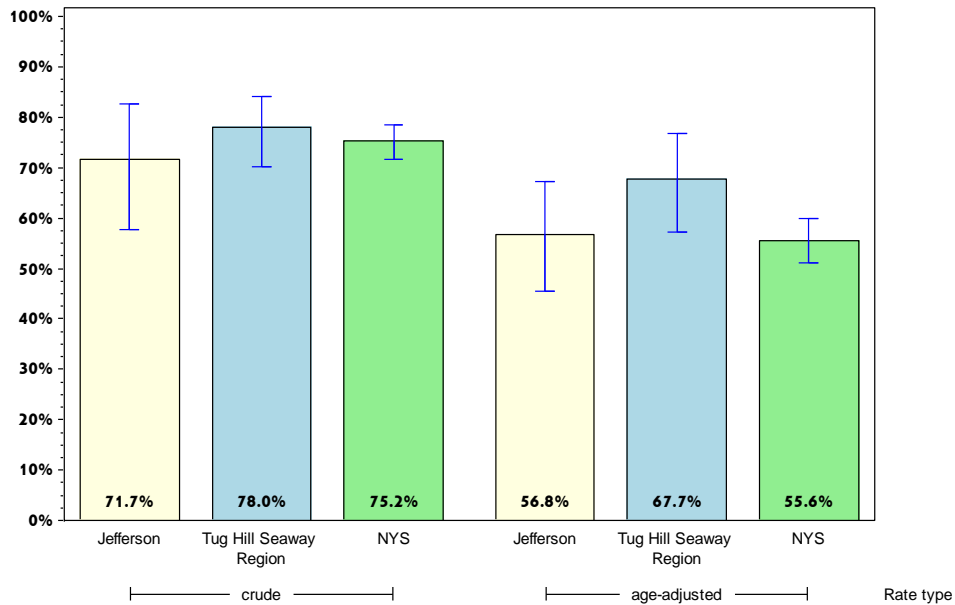
<sup>^</sup> Highly variable rate (confidence interval with a half-width greater than 10).



# Jefferson

## Prevent Chronic Diseases

### Percentage of adults with diagnosed high blood pressure taking high blood pressure medication



#### Jefferson County

#### Tug Hill Seaway

	Est. # of Adults	Percent	95% CI	Est. # of Adults	Percent	95% CI
<b>Total</b>	19,057	71.7 <sup>^</sup>	(57.6-82.5)	50,279	78.0	(70.2-84.2)
<b>Age</b>		#			#	
18-24		#			#	
25-34		#			#	
35-44		#			#	
45-64	8,836	88.9	(79.3-94.4)	20,550	89.4	(84.1-93.1)
65+	8,523	98.0	(95.1-99.2)	19,501	93.5	(88.8-96.3)
<b>Race</b>						
White, NH	18,490	81.4 <sup>^</sup>	(69.7-89.3)	44,412	80.3	(74.4-85.1)
Black, NH		#			#	
Hispanic		#			#	
Other, NH		#			#	
<b>Sex</b>						
male	10,225	59.9 <sup>^</sup>	(42.4-75.2)	27,531	70.5 <sup>^</sup>	(57.9-80.5)
female	8,833	92.9	(85.3-96.7)	22,749	89.6	(84.2-93.2)
<b>Age-adjusted<sup>&amp;</sup></b>		56.8 <sup>^</sup>	(45.6-67.3)		67.7 <sup>^</sup>	(57.3-76.6)

& Percent is age-adjusted to the 2000 United States Population.

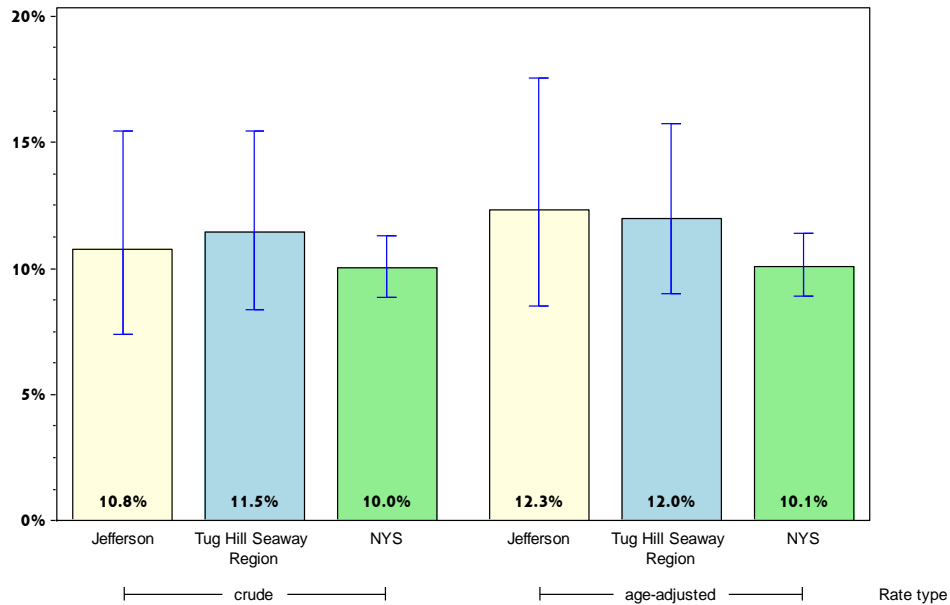
# Rates with <10 in the numerator or <50 in the denominator are suppressed.

<sup>^</sup> Highly variable rate (confidence interval with a half-width greater than 10).

# Jefferson

## Prevent Chronic Diseases

### Percentage of adults with current asthma\*



#### Jefferson County

#### Tug Hill Seaway

	Est. # of Adults	Percent	95% CI	Est. # of Adults	Percent	95% CI
<b>Total</b>	9,637	10.8	(7.4-15.4)	22,749	11.5	(8.4-15.5)
<b>Age</b>		#			#	
18-24		#			#	
25-34		#		3,200	7.9	(4.0-15.0)
35-44		#		4,896	16.9 <sup>^</sup>	(9.7-27.7)
45-64	4,544	17.8	(11.2-27.1)	7,590	12.1	(8.7-16.5)
65+	915	6.8	(3.0-14.5)	3,117	9.2	(6.2-13.4)
<b>Race</b>						
White, NH	6,298	9.1	(6.1-13.5)	16,002	9.8	(7.7-12.3)
Black, NH		#			#	
Hispanic		#			#	
Other, NH		#			#	
<b>Sex</b>						
male	5,286	11.4	(6.7-18.8)	9,164	9.0	(6.2-12.9)
female	4,351	10.1	(6.0-16.6)	13,585	14.0	(8.9-21.4)
<b>Age-adjusted<sup>&amp;</sup></b>		12.3	(8.5-17.6)		12.0	(9.0-15.8)

\* Physician diagnosed asthma.

& Percent is age-adjusted to the 2000 United States Population.

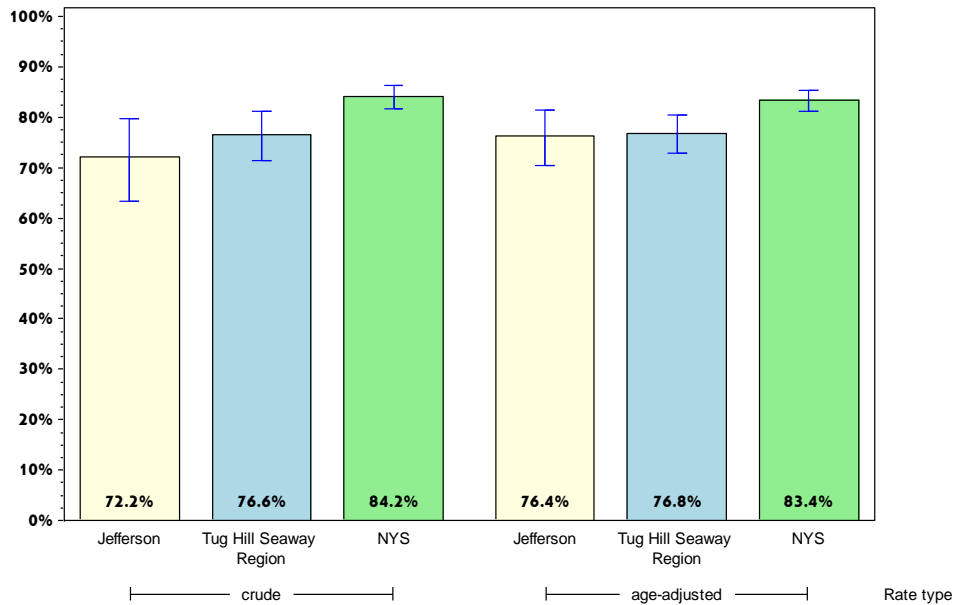
# Rates with <10 in the numerator or <50 in the denominator are suppressed.

<sup>^</sup> Highly variable rate (confidence interval with a half-width greater than 10).

# Jefferson

## Prevent Chronic Diseases

### Percent of adults with cholesterol checked\*



#### Jefferson County

#### Tug Hill Seaway

	Est. # of Adults	Percent	95% CI	Est. # of Adults	Percent	95% CI
<b>Total</b>	63,828	72.2	(63.3-79.6)	147,720	76.6	(71.4-81.1)
<b>Age</b>						
18-24		#		6,753	25.5 <sup>^</sup>	(14.3-41.4)
25-34	10,442	61.8 <sup>^</sup>	(42.7-77.8)	26,580	66.9 <sup>^</sup>	(53.1-78.3)
35-44	11,013	79.0 <sup>^</sup>	(59.9-90.5)	22,882	79.0 <sup>^</sup>	(68.2-86.8)
45-64	24,175	94.1	(88.9-97.0)	57,695	92.3	(88.1-95.1)
65+	13,311	97.1	(91.7-99.0)	32,527	96.2	(92.8-98.1)
<b>Race</b>						
White, NH	53,993	79.8	(72.0-85.8)	127,670	79.5	(74.9-83.5)
Black, NH		#			#	
Hispanic		#			#	
Other, NH		#			#	
<b>Sex</b>						
male	33,043	72.4 <sup>^</sup>	(60.7-81.7)	75,368	75.5	(68.5-81.5)
female	30,785	71.9 <sup>^</sup>	(57.9-82.7)	72,352	77.8	(69.7-84.2)
<b>Age-adjusted<sup>&amp;</sup></b>		76.4	(70.5-81.4)		76.8	(72.8-80.4)

\* As diagnosed by a health professional.

& Percent is age-adjusted to the 2000 United States Population.

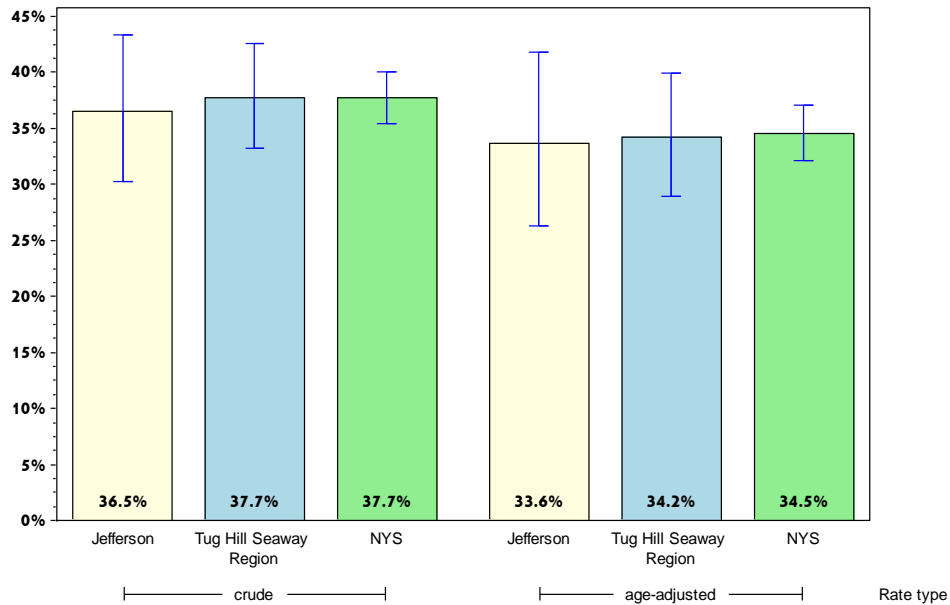
# Rates with <10 in the numerator or <50 in the denominator are suppressed.

<sup>^</sup> Highly variable rate (confidence interval with a half-width greater than 10).

# Jefferson

## Prevent Chronic Diseases

### Percentage of adults 18 years and older with elevated cholesterol\*



#### Jefferson County

#### Tug Hill Seaway

	Est. # of Adults	Percent	95% CI	Est. # of Adults	Percent	95% CI
<b>Total</b>	23,275	36.5	(30.2-43.4)	55,600	37.7	(33.2-42.5)
<b>Age</b>		#			#	
18-24		#			#	
25-34		#		5,091	19.2 <sup>^</sup>	(8.9-36.4)
35-44		#		4,842	21.2 <sup>^</sup>	(13.0-32.5)
45-64	12,042	50.0 <sup>^</sup>	(39.8-60.1)	27,236	47.4	(41.1-53.8)
65+	6,034	45.5	(36.0-55.4)	16,514	51.1	(45.0-57.2)
<b>Race</b>						
White, NH	19,764	36.7	(30.3-43.6)	51,192	40.2	(36.1-44.5)
Black, NH		#			#	
Hispanic		#			#	
Other, NH		#			#	
<b>Sex</b>						
male	13,680	41.5 <sup>^</sup>	(31.7-51.9)	30,281	40.3	(32.8-48.4)
female	9,595	31.2	(24.0-39.5)	25,319	35.1	(30.2-40.2)
<b>Age-adjusted<sup>&amp;</sup></b>		33.6	(26.3-41.8)		34.2	(28.9-40.0)

\* As diagnosed by a health professional.

& Percent is age-adjusted to the 2000 United States Population.

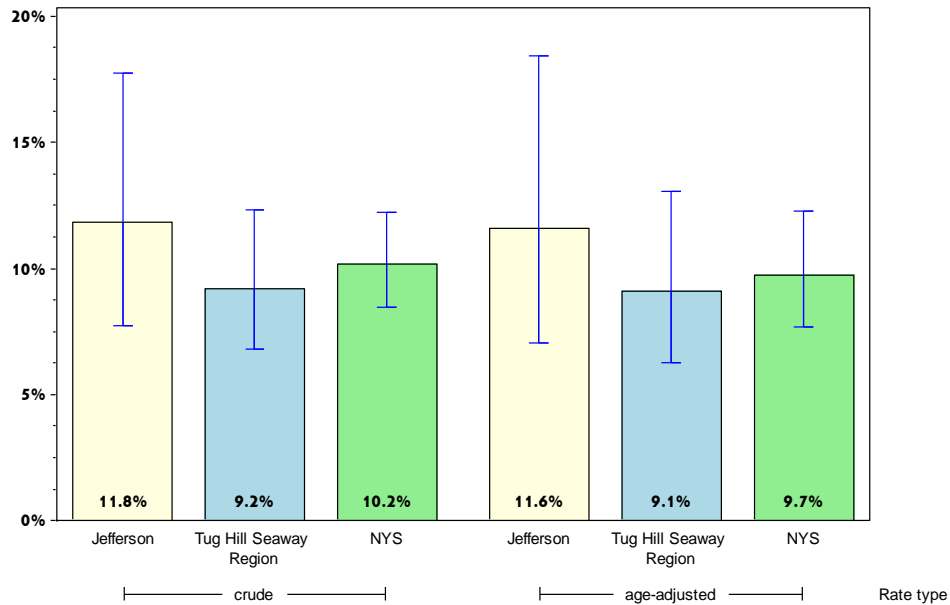
# Rates with <10 in the numerator or <50 in the denominator are suppressed.

<sup>^</sup> Highly variable rate (confidence interval with a half-width greater than 10).

# Jefferson

## Prevent Chronic Diseases

Percentage of adults who have taken a course or class to learn how to manage their chronic disease or condition\*



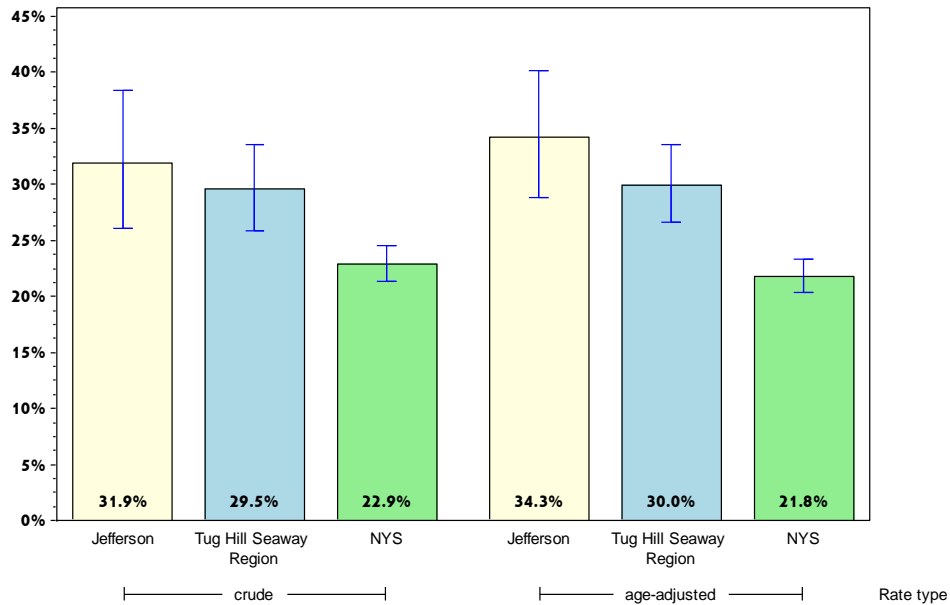
	Jefferson County			Tug Hill Seaway		
	Est. # of Adults	Percent	95% CI	Est. # of Adults	Percent	95% CI
<b>Total</b>	5,625	11.8	(7.7-17.7)	10,075	9.2	(6.8-12.3)
<b>Age</b>		#			#	
18-24		#			#	
25-34		#			#	
35-44		#			#	
45-64	2,097	12.1 <sup>^</sup>	(6.2-22.5)	3,873	9.9	(6.5-14.8)
65+	1,767	14.9	(8.7-24.5)	3,423	12.3	(8.7-17.1)
<b>Race</b>						
White, NH	4,012	10.2	(6.9-14.9)	8,184	8.9	(6.8-11.5)
Black, NH		#			#	
Hispanic		#			#	
Other, NH		#			#	
<b>Sex</b>						
male	3,046	11.1	(6.3-18.9)	4,637	7.8	(5.0-11.8)
female	2,579	12.8 <sup>^</sup>	(6.8-23.0)	5,437	10.9	(7.2-16.1)
<b>Age-adjusted<sup>&amp;</sup></b>		11.6	(7.0-18.4)		9.1	(6.3-13.1)

\* Courses for high blood pressure, arthritis, or diabetes.  
 & Percent is age-adjusted to the 2000 United States Population.  
 # Rates with <10 in the numerator or <50 in the denominator are suppressed.  
 ^ Highly variable rate (confidence interval with a half-width greater than 10).

# Jefferson

## Prevent Chronic Diseases

### Percentage of adults with arthritis\*



#### Jefferson County

#### Tug Hill Seaway

	Est. # of Adults	Percent	95% CI	Est. # of Adults	Percent	95% CI
<b>Total</b>	28,836	31.9	(26.0-38.4)	58,935	29.5	(25.9-33.5)
<b>Age</b>		#			#	
18-24		#			#	
25-34	2,503	14.2 <sup>^</sup>	(6.6-28.0)	4,945	12.2	(6.9-20.7)
35-44	4,363	31.1 <sup>^</sup>	(17.3-49.4)	6,901	23.7 <sup>^</sup>	(15.3-34.6)
45-64	10,600	41.3	(32.1-51.1)	23,290	37.0	(31.5-43.0)
65+	8,578	62.2	(52.3-71.1)	20,670	60.3	(54.3-66.0)
<b>Race</b>						
White, NH	25,500	36.6	(30.3-43.4)	54,762	33.3	(29.7-37.2)
Black, NH		#			#	
Hispanic		#			#	
Other, NH		#			#	
<b>Sex</b>						
male	15,712	33.4	(24.9-43.1)	28,639	27.9	(22.6-33.9)
female	13,124	30.3	(22.9-39.0)	30,296	31.3	(26.3-36.7)
<b>Age-adjusted<sup>&amp;</sup></b>		34.3	(28.8-40.2)		30.0	(26.7-33.5)

\* Includes rheumatoid arthritis, gout, lupus, or fibromyalgia.

& Percent is age-adjusted to the 2000 United States Population.

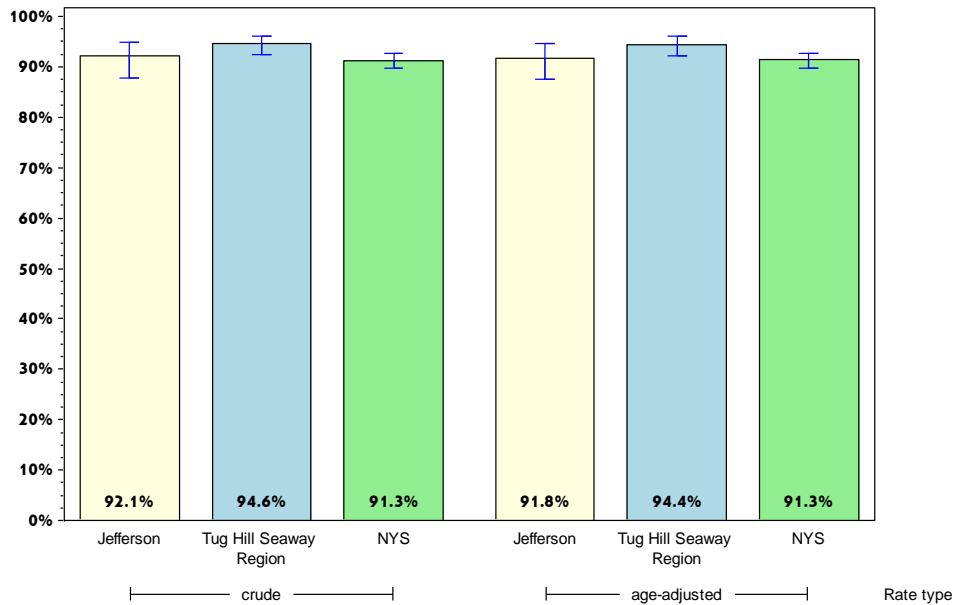
# Rates with <10 in the numerator or <50 in the denominator are suppressed.

<sup>^</sup> Highly variable rate (confidence interval with a half-width greater than 10).

# Jefferson

## Promote a Healthy and Safe Environment

### Percentage of adults who consider their neighborhood suitable for walking and physical activity



#### Jefferson County

#### Tug Hill Seaway

	Est. # of Adults	Percent	95% CI	Est. # of Adults	Percent	95% CI
<b>Total</b>	81,675	92.1	(87.7-95.0)	183,414	94.6	(92.3-96.2)
<b>Age</b>		#				
18-24		#		29,562	96.0	(87.2-98.8)
25-34	15,889	93.2 <sup>^</sup>	(80.0-97.9)	38,726	96.7	(90.8-98.8)
35-44	12,987	93.1 <sup>^</sup>	(81.3-97.7)	26,518	93.6	(85.9-97.2)
45-64	22,405	88.0 <sup>^</sup>	(77.0-94.2)	56,679	92.7	(87.7-95.8)
65+	12,219	92.4	(84.0-96.5)	30,828	94.9	(91.4-97.0)
<b>Race</b>						
White, NH	63,216	92.7	(88.4-95.5)	150,939	94.8	(92.6-96.4)
Black, NH		#			#	
Hispanic		#			#	
Other, NH		#			#	
<b>Sex</b>						
male	42,623	91.4	(84.0-95.6)	95,152	94.7	(91.0-97.0)
female	39,052	92.8	(87.3-96.0)	88,262	94.4	(91.4-96.4)
<b>Age-adjusted<sup>&amp;</sup></b>		91.8	(87.5-94.7)		94.4	(92.2-96.1)

& Percent is age-adjusted to the 2000 United States Population.

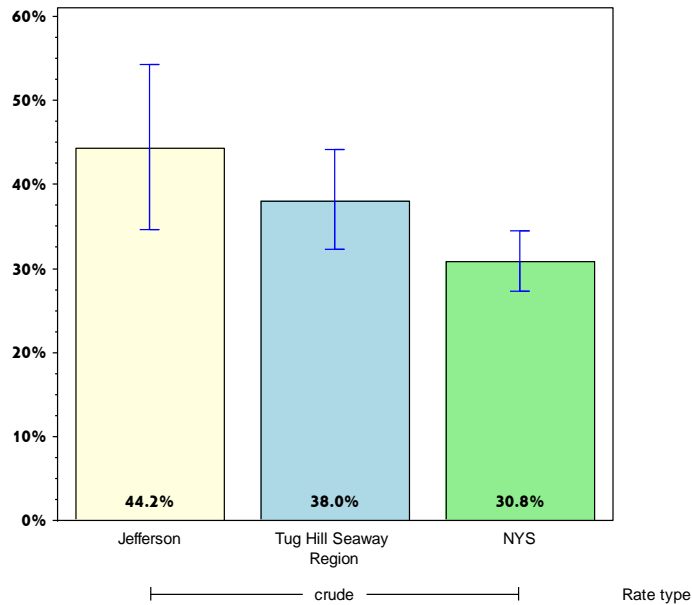
# Rates with <10 in the numerator or <50 in the denominator are suppressed.

<sup>^</sup> Highly variable rate (confidence interval with a half-width greater than 10).

# Jefferson

## Promote a Health and Safe Environment

### Percentage of adults aged 65+ years with at least one fall in the past 12 months



#### Jefferson County

#### Tug Hill Seaway

	Est. # of Adults	Percent	95% CI	Est. # of Adults	Percent	95% CI
<b>Total</b>	5,909	44.2 <sup>^</sup>	(34.6-54.3)	12,620	38.0	(32.3-44.1)
<b>Age<sup>+</sup></b>						
18-24						
25-34						
35-44						
45-64						
65+						
<b>Race</b>						
White, NH	5,395	42.0 <sup>^</sup>	(32.5-52.1)	11,720	37.2	(31.5-43.2)
Black, NH		#			#	
Hispanic		#			#	
Other, NH		#			#	
<b>Sex</b>						
male	2,613	46.5 <sup>^</sup>	(32.0-61.6)	6,220	40.7	(31.9-50.0)
female	3,295	42.6 <sup>^</sup>	(30.1-56.2)	6,400	35.8	(28.4-43.9)
<b>Age-adjusted<sup>+,&amp;</sup></b>						

& Percent is age-adjusted to the 2000 United States Population.

+ Age-adjusted and age specific percent not generated for health indicators with age range limits.

# Rates with <10 in the numerator or <50 in the denominator are suppressed.

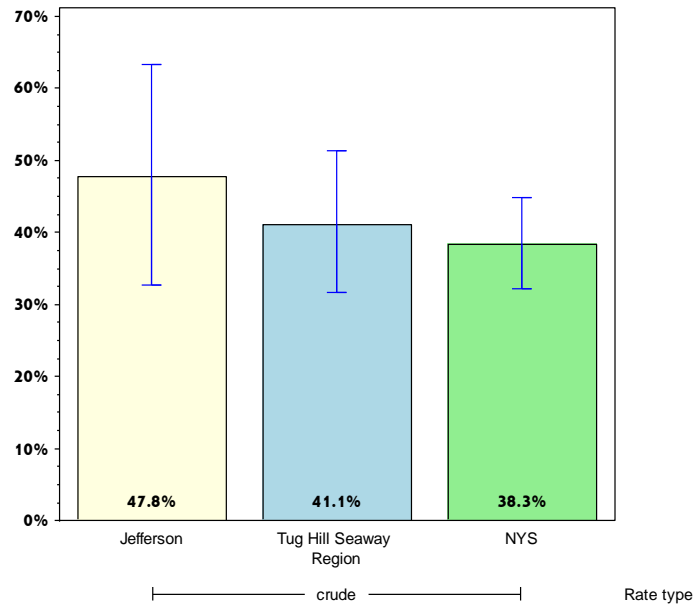
<sup>^</sup> Highly variable rate (confidence interval with a half-width greater than 10).



# Jefferson

## Promote a Health and Safe Environment

Among adults aged 65+ years with at least one fall in the past 12 months, percent that resulted in injury\*



### Jefferson County

### Tug Hill Seaway

	Est. # of Adults	Percent	95% CI	Est. # of Adults	Percent	95% CI
<b>Total</b>	2,826	47.8 <sup>^</sup>	(32.7-63.4)	5,188	41.1 <sup>^</sup>	(31.6-51.3)
<b>Age<sup>+</sup></b>						
18-24						
25-34						
35-44						
45-64						
65+						
<b>Race</b>						
White, NH	2,312	42.9 <sup>^</sup>	(28.2-58.9)	4,494	38.3 <sup>^</sup>	(29.0-48.6)
Black, NH		#			#	
Hispanic		#			#	
Other, NH		#			#	
<b>Sex</b>						
male		#		1,618	26.0 <sup>^</sup>	(15.1-40.9)
female		#		3,570	55.8 <sup>^</sup>	(42.1-68.7)
<b>Age-adjusted<sup>+,&amp;</sup></b>						

\* Falls that limited regular activities or lead to doctor visits.

& Percent is age-adjusted to the 2000 United States Population.

+ Age-adjusted and age specific percent not generated for health indicators with age range limits.

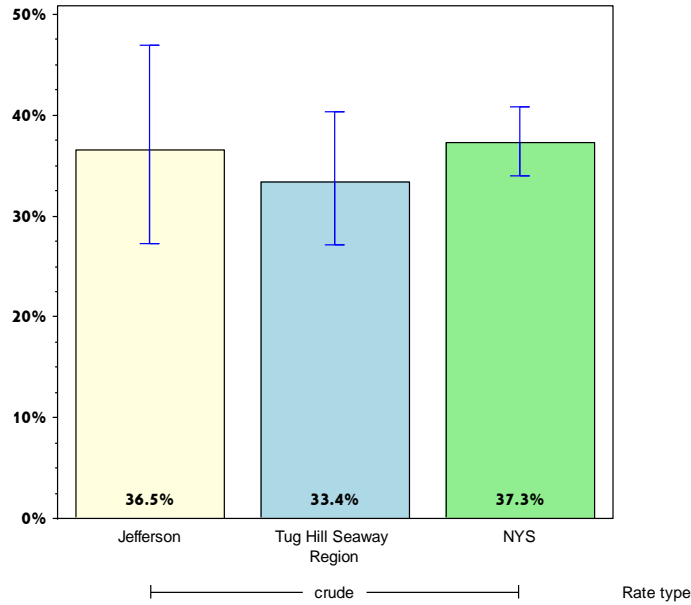
# Rates with <10 in the numerator or <50 in the denominator are suppressed.

<sup>^</sup> Highly variable rate (confidence interval with a half-width greater than 10).

# Jefferson

## Prevent HIV/STDs, Vaccine Preventable Diseases and Healthcare-Associated Infections

### Percentage of adults aged 47-68 years reporting ever tested for Hepatitis C (HCV)



#### Jefferson County

#### Tug Hill Seaway

	Est. # of Adults	Percent	95% CI	Est. # of Adults	Percent	95% CI
<b>Total</b>	8,192	36.5 <sup>^</sup>	(27.2-47.0)	18,590	33.4	(27.1-40.3)
<b>Age<sup>+</sup></b>						
18-24						
25-34						
35-44						
45-64						
65+						
<b>Race</b>						
White, NH	5,795	30.4	(22.4-39.9)	14,189	28.2	(23.4-33.6)
Black, NH		#			#	
Hispanic		#			#	
Other, NH		#			#	
<b>Sex</b>						
male	5,911	45.8 <sup>^</sup>	(31.6-60.6)	10,861	38.1	(29.9-47.2)
female	2,281	24.0 <sup>^</sup>	(15.1-35.9)	7,728	28.4 <sup>^</sup>	(19.2-39.8)
<b>Age-adjusted<sup>+,&amp;</sup></b>						

& Percent is age-adjusted to the 2000 United States Population.

+ Age-adjusted and age specific percent not generated for health indicators with age range limits.

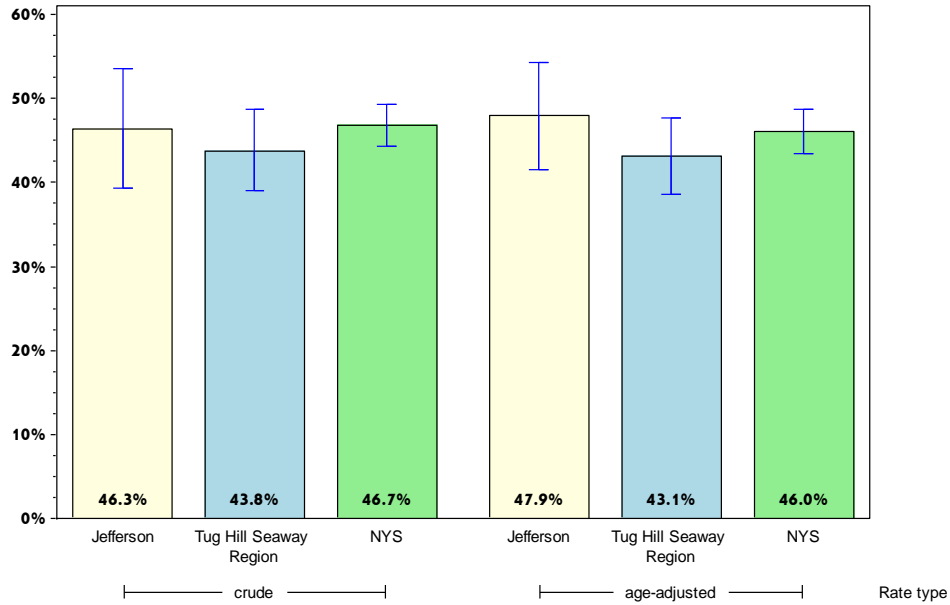
# Rates with <10 in the numerator or <50 in the denominator are suppressed.

<sup>^</sup> Highly variable rate (confidence interval with a half-width greater than 10).

# Jefferson

## Prevent HIV/STDs, Vaccine Preventable Diseases and Healthcare-Associated Infections

### Percentage of adults aged 18+ years with flu immunization in the past year\*



#### Jefferson County

#### Tug Hill Seaway

	Est. # of Adults	Percent	95% CI	Est. # of Adults	Percent	95% CI
<b>Total</b>	41,086	46.3	(39.2-53.5)	85,569	43.8	(38.9-48.7)
<b>Age</b>		#				
18-24		#		10,446	33.3 <sup>^</sup>	(18.3-52.7)
25-34	8,407	49.3 <sup>^</sup>	(32.0-66.8)	15,071	37.6 <sup>^</sup>	(25.1-52.0)
35-44	5,480	39.3 <sup>^</sup>	(24.1-56.8)	8,308	29.3 <sup>^</sup>	(20.3-40.2)
45-64	12,394	49.2	(39.6-58.8)	27,076	44.3	(38.3-50.4)
65+	9,425	69.9	(60.0-78.3)	24,084	71.8	(66.0-77.0)
<b>Race</b>						
White, NH	29,992	44.0	(37.4-50.8)	69,611	43.3	(39.3-47.4)
Black, NH		#			#	
Hispanic		#			#	
Other, NH		#			#	
<b>Sex</b>						
male	23,208	50.1	(40.3-59.9)	44,505	44.1	(37.2-51.2)
female	17,878	42.2 <sup>^</sup>	(32.8-52.3)	41,063	43.4	(36.8-50.2)
<b>Age-adjusted<sup>&amp;</sup></b>		47.9	(41.5-54.3)		43.1	(38.6-47.6)

\* Includes flu shot or flu spray

& Percent is age-adjusted to the 2000 United States Population.

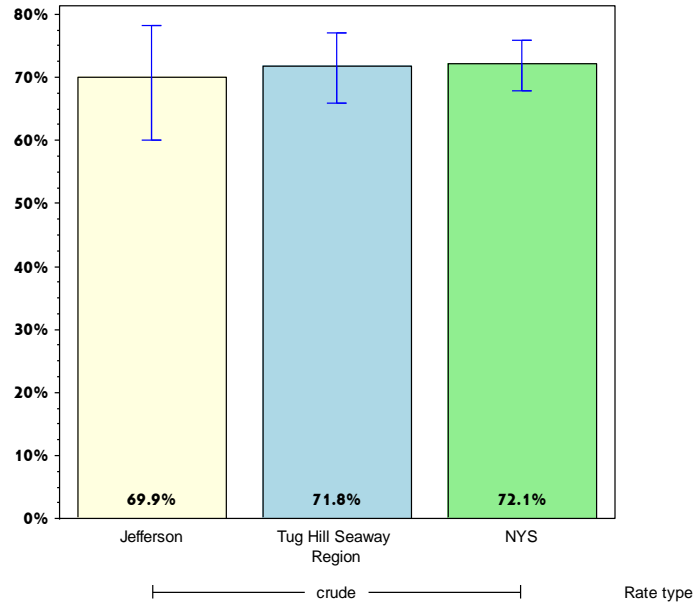
# Rates with <10 in the numerator or <50 in the denominator are suppressed.

<sup>^</sup> Highly variable rate (confidence interval with a half-width greater than 10).

# Jefferson

## Prevent HIV/STDs, Vaccine Preventable Diseases and Healthcare-Associated Infections

Percentage of adults aged 65+ years with flu immunization in the past year\*



### Jefferson County

### Tug Hill Seaway

	Est. # of Adults	Percent	95% CI	Est. # of Adults	Percent	95% CI
<b>Total</b>	9,425	69.9	(60.0-78.3)	24,084	71.8	(66.0-77.0)
<b>Age<sup>+</sup></b>						
18-24						
25-34						
35-44						
45-64						
65+						
<b>Race</b>						
White, NH	8,912	68.7 <sup>^</sup>	(58.7-77.3)	22,895	71.8	(65.9-77.0)
Black, NH		#			#	
Hispanic		#			#	
Other, NH		#			#	
<b>Sex</b>						
male	4,530	79.3 <sup>^</sup>	(66.4-88.1)	12,604	80.6	(72.9-86.6)
female	4,896	63.1 <sup>^</sup>	(49.4-74.9)	11,480	64.1	(55.8-71.6)
<b>Age-adjusted<sup>+,&amp;</sup></b>						

\* Includes flu shot or flu spray

& Percent is age-adjusted to the 2000 United States Population.

+ Age-adjusted and age specific percent not generated for health indicators with age range limits.

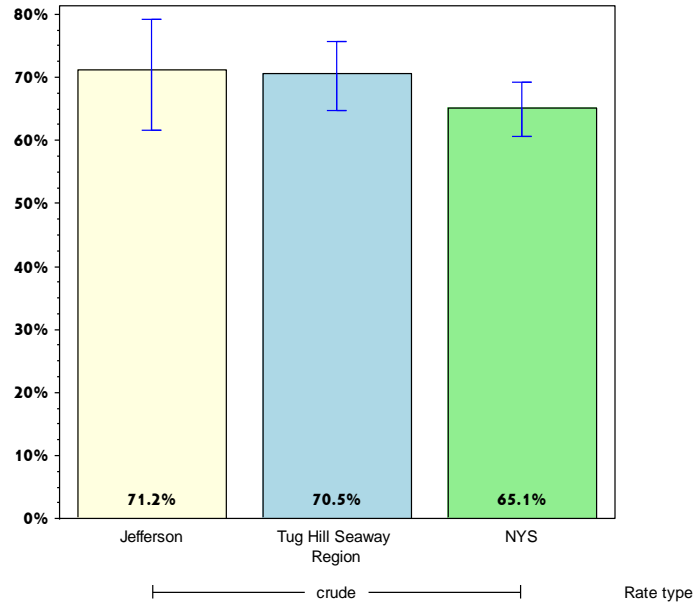
# Rates with <10 in the numerator or <50 in the denominator are suppressed.

<sup>^</sup> Highly variable rate (confidence interval with a half-width greater than 10).

# Jefferson

## Prevent HIV/STDs, Vaccine Preventable Diseases and Healthcare-Associated Infections

### Percentage of adults aged 65+ years with pneumococcal immunization



#### Jefferson County

#### Tug Hill Seaway

	Est. # of Adults	Percent	95% CI	Est. # of Adults	Percent	95% CI
<b>Total</b>	9,330	71.2	(61.5-79.3)	23,094	70.5	(64.7-75.7)
<b>Age<sup>+</sup></b>						
18-24						
25-34						
35-44						
45-64						
65+						
<b>Race</b>						
White, NH	8,816	70.0	(60.2-78.3)	22,136	71.2	(65.5-76.3)
Black, NH		#			#	
Hispanic		#			#	
Other, NH		#			#	
<b>Sex</b>						
male	4,118	75.5 <sup>^</sup>	(61.5-85.6)	10,214	67.9	(58.9-75.8)
female	5,212	68.1 <sup>^</sup>	(54.7-79.1)	12,881	72.7	(65.0-79.3)
<b>Age-adjusted<sup>+,&amp;</sup></b>						

& Percent is age-adjusted to the 2000 United States Population.

+ Age-adjusted and age specific percent not generated for health indicators with age range limits.

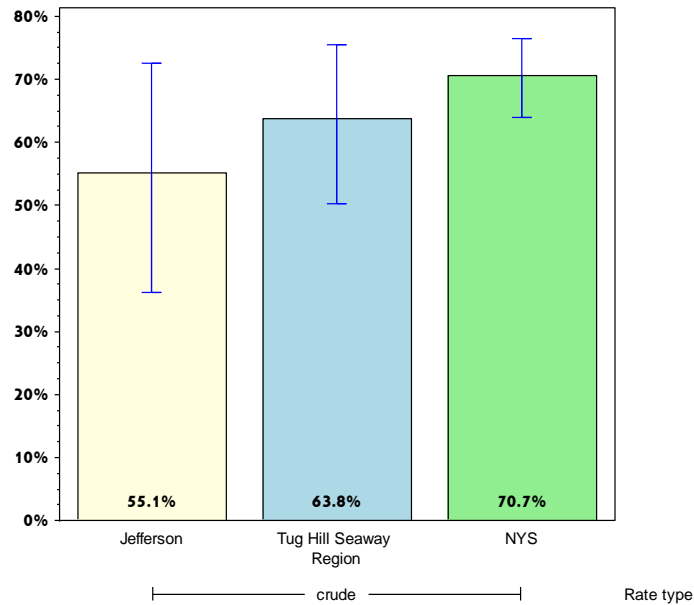
# Rates with <10 in the numerator or <50 in the denominator are suppressed.

<sup>^</sup> Highly variable rate (confidence interval with a half-width greater than 10).

# Jefferson

## Promote Healthy Women, Infants, and Children

Percentage of women aged 18-44 years who had dental visit within the last year



### Jefferson County

### Tug Hill Seaway

	Est. # of Adults	Percent	95% CI	Est. # of Adults	Percent	95% CI
<b>Total</b>	12,713	55.1 <sup>^</sup>	(36.2-72.6)	29,302	63.8 <sup>^</sup>	(50.3-75.5)
<b>Age<sup>+</sup></b>						
18-24						
25-34						
35-44						
45-64						
65+						
<b>Race</b>						
White, NH	8,199	56.0 <sup>^</sup>	(39.1-71.5)	20,566	62.5 <sup>^</sup>	(50.8-72.9)
Black, NH		#			#	
Hispanic		#			#	
Other, NH		#			#	
<b>Sex</b>						
male		#			#	
female	12,713	55.1 <sup>^</sup>	(36.2-72.6)	29,302	63.8 <sup>^</sup>	(50.3-75.5)
<b>Age-adjusted<sup>+,&amp;</sup></b>						

& Percent is age-adjusted to the 2000 United States Population.

+ Age-adjusted and age specific percent not generated for health indicators with age range limits.

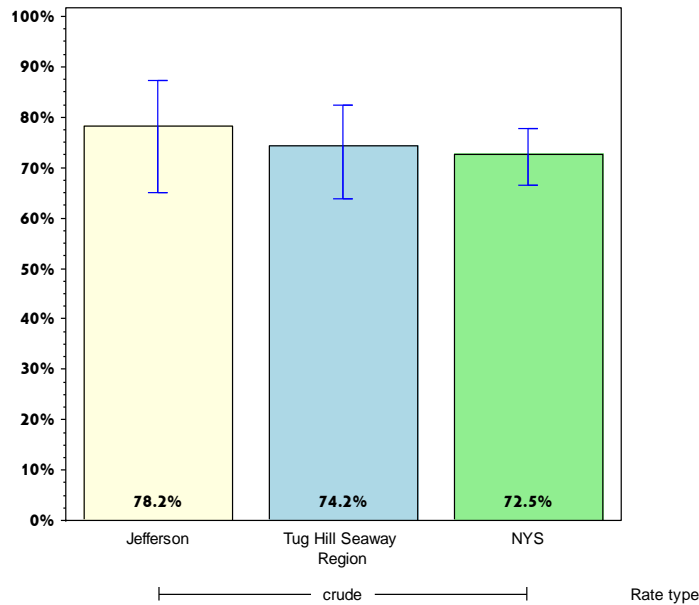
# Rates with <10 in the numerator or <50 in the denominator are suppressed.

<sup>^</sup> Highly variable rate (confidence interval with a half-width greater than 10).

# Jefferson

## Promote Healthy Women, Infants, and Children

Women aged 18-44 years who saw a doctor for a routine checkup within the last year



### Jefferson County

### Tug Hill Seaway

	Est. # of Adults	Percent	95% CI	Est. # of Adults	Percent	95% CI
<b>Total</b>	18,287	78.2 <sup>^</sup>	(65.1-87.3)	34,941	74.2 <sup>^</sup>	(63.8-82.5)
<b>Age<sup>+</sup></b>						
18-24						
25-34						
35-44						
45-64						
65+						
<b>Race</b>						
White, NH	10,662	72.3 <sup>^</sup>	(57.5-83.4)	22,853	67.5 <sup>^</sup>	(56.3-77.0)
Black, NH		#			#	
Hispanic		#			#	
Other, NH		#			#	
<b>Sex</b>						
male		#			#	
female	18,287	78.2 <sup>^</sup>	(65.1-87.3)	34,941	74.2 <sup>^</sup>	(63.8-82.5)
<b>Age-adjusted<sup>+,&amp;</sup></b>						

& Percent is age-adjusted to the 2000 United States Population.

+ Age-adjusted and age specific percent not generated for health indicators with age range limits.

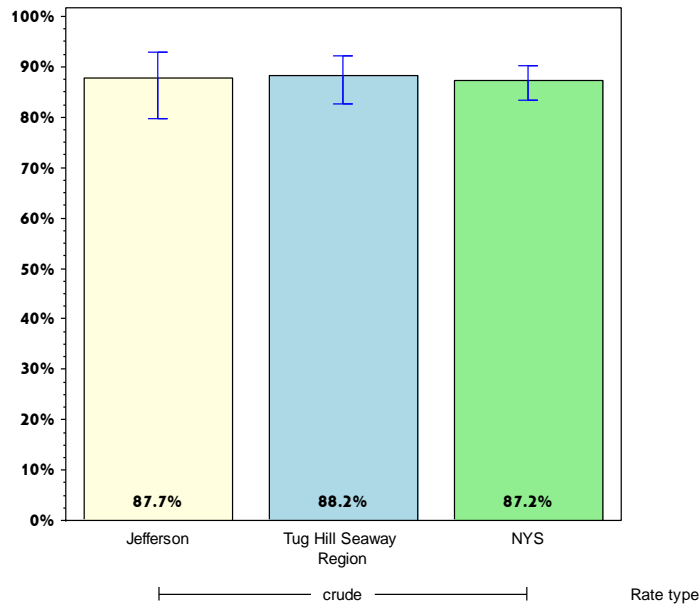
# Rates with <10 in the numerator or <50 in the denominator are suppressed.

<sup>^</sup> Highly variable rate (confidence interval with a half-width greater than 10).

# Jefferson

## Promote Healthy Women, Infants, and Children

### Percentage of women aged 18-64 years with health care coverage



	Jefferson County			Tug Hill Seaway		
	Est. # of Adults	Percent	95% CI	Est. # of Adults	Percent	95% CI
<b>Total</b>	30,137	87.7	(79.7-92.8)	68,414	88.2	(82.6-92.1)
<b>Age<sup>+</sup></b>						
18-24						
25-34						
35-44						
45-64						
65+						
<b>Race</b>						
White, NH	21,552	85.7	(76.1-91.9)	53,239	86.2	(79.7-90.8)
Black, NH		#			#	
Hispanic		#			#	
Other, NH		#			#	
<b>Sex</b>						
male		#			#	
female	30,137	87.7	(79.7-92.8)	68,414	88.2	(82.6-92.1)
<b>Age-adjusted<sup>+,&amp;</sup></b>						

& Percent is age-adjusted to the 2000 United States Population.

+ Age-adjusted and age specific percent not generated for health indicators with age range limits.

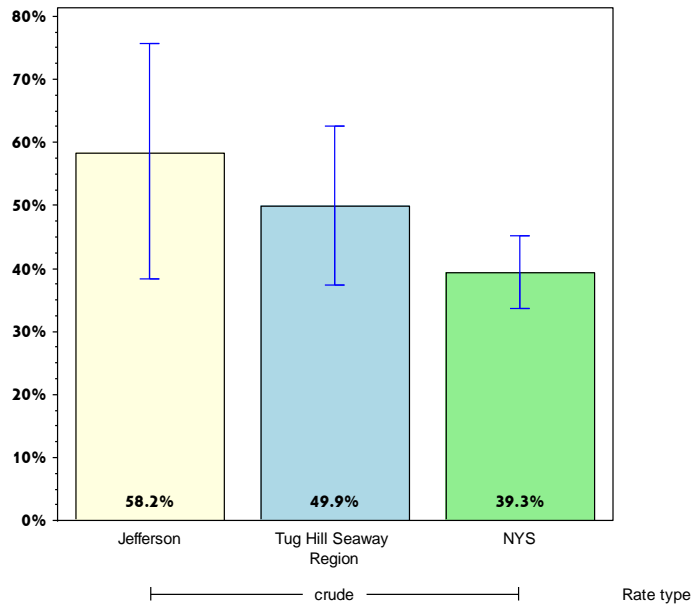
# Rates with <10 in the numerator or <50 in the denominator are suppressed.



# Jefferson

## Promote Healthy Women, Infants, and Children

Percentage of women aged 18-44 years whose health care provider discussed planning a healthy pregnancy



### Jefferson County

### Tug Hill Seaway

	Est. # of Adults	Percent	95% CI	Est. # of Adults	Percent	95% CI
<b>Total</b>	13,353	58.2 <sup>^</sup>	(38.4-75.7)	22,720	49.9 <sup>^</sup>	(37.4-62.5)
<b>Age<sup>+</sup></b>						
18-24						
25-34						
35-44						
45-64						
65+						
<b>Race</b>						
White, NH	9,716	67.0 <sup>^</sup>	(50.0-80.4)	17,601	54.2 <sup>^</sup>	(42.9-65.0)
Black, NH		#			#	
Hispanic		#			#	
Other, NH		#			#	
<b>Sex</b>						
male		#			#	
female	13,353	58.2 <sup>^</sup>	(38.4-75.7)	22,720	49.9 <sup>^</sup>	(37.4-62.5)
<b>Age-adjusted<sup>+,&amp;</sup></b>						

& Percent is age-adjusted to the 2000 United States Population.

+ Age-adjusted and age specific percent not generated for health indicators with age range limits.

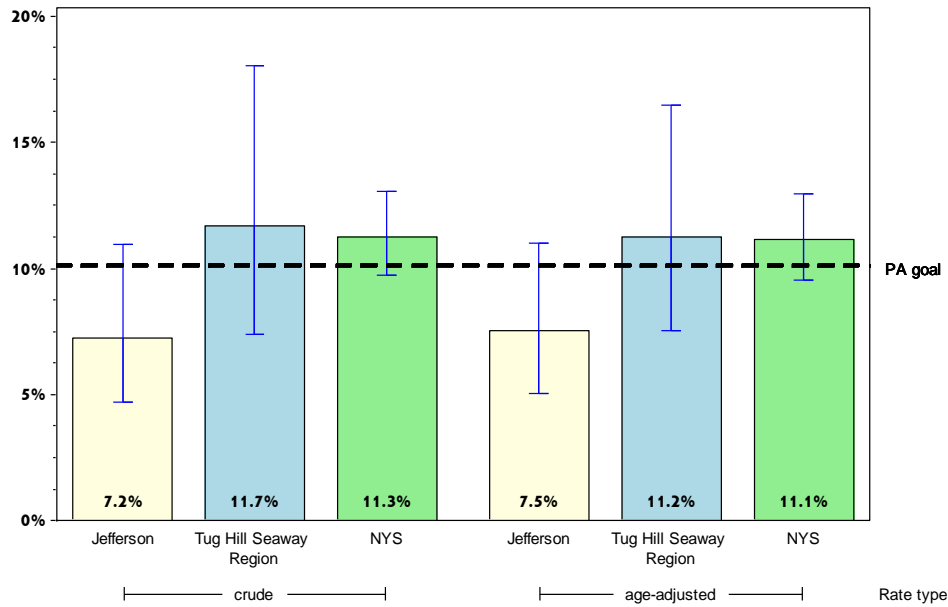
# Rates with <10 in the numerator or <50 in the denominator are suppressed.

<sup>^</sup> Highly variable rate (confidence interval with a half-width greater than 10).

# Jefferson

## Promote Mental Health and Prevention Substance Abuse

Percentage of adults with poor mental health for 14 or more days in the last month



	Jefferson County			Tug Hill Seaway		
	Est. # of Adults	Percent	95% CI	Est. # of Adults	Percent	95% CI
<b>Total</b>	6,433	7.2	(4.7-11.0)	23,080	11.7	(7.4-18.0)
<b>Age</b>		#			#	
18-24		#			#	
25-34		#		7,047	17.3 <sup>^</sup>	(5.3-43.7)
35-44		#		2,371	8.3	(4.3-15.5)
45-64	1,862	7.3	(4.3-12.3)	4,855	7.8	(5.5-11.0)
65+	1,402	10.8 <sup>^</sup>	(5.1-21.6)	2,920	8.8	(5.4-14.0)
<b>Race</b>						
White, NH	5,230	7.7	(4.8-12.1)	13,943	8.6	(6.3-11.5)
Black, NH		#			#	
Hispanic		#			#	
Other, NH		#			#	
<b>Sex</b>						
male	1,707	3.7	(2.1-6.3)	9,832	9.7 <sup>^</sup>	(4.1-21.3)
female	4,725	11.2	(6.5-18.6)	13,248	13.9	(8.5-21.9)
<b>Age-adjusted<sup>&amp;</sup></b>		7.5	(5.1-11.0)		11.2	(7.5-16.5)

& Percent is age-adjusted to the 2000 United States Population.

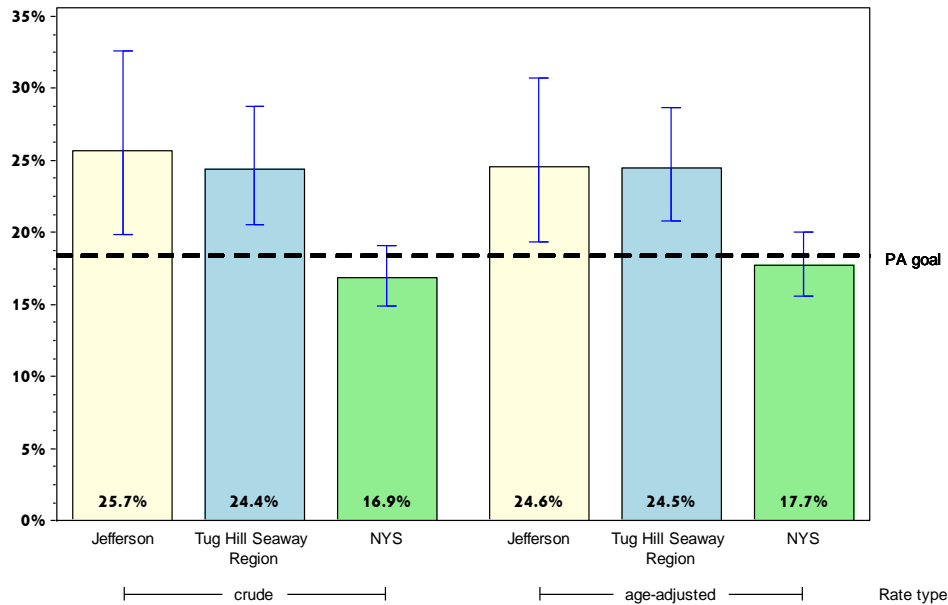
# Rates with <10 in the numerator or <50 in the denominator are suppressed.

<sup>^</sup> Highly variable rate (confidence interval with a half-width greater than 10).

# Jefferson

## Promote Mental Health and Prevention Substance Abuse

### Percentage of adult binge drinking during the past month\*



#### Jefferson County

#### Tug Hill Seaway

	Est. # of Adults	Percent	95% CI	Est. # of Adults	Percent	95% CI
<b>Total</b>	22,716	25.7	(19.8-32.6)	46,288	24.4	(20.5-28.7)
<b>Age</b>						
18-24	#	#	#	8,729	27.8 <sup>^</sup>	(15.8-44.2)
25-34	7,309	43.3 <sup>^</sup>	(26.4-62.0)	15,445	43.6 <sup>^</sup>	(32.1-55.9)
35-44	2,340	17.2 <sup>^</sup>	(7.8-33.8)	6,812	24.4 <sup>^</sup>	(16.2-35.0)
45-64	7,112	27.9	(20.1-37.4)	12,635	20.9	(16.3-26.3)
65+	#	#	#	2,667	8.0	(4.9-12.8)
<b>Race</b>						
White, NH	15,262	22.5	(17.3-28.8)	37,144	23.3	(19.7-27.4)
Black, NH	#	#	#	#	#	#
Hispanic	#	#	#	#	#	#
Other, NH	#	#	#	#	#	#
<b>Sex</b>						
male	15,147	32.5 <sup>^</sup>	(23.7-42.8)	29,829	31.1	(25.3-37.6)
female	7,569	18.1	(11.6-27.1)	16,460	17.5	(13.0-23.2)
<b>Age-adjusted<sup>&amp;</sup></b>		24.6	(19.4-30.7)		24.5	(20.8-28.6)

\* Men who have five or more drinks, women having four or more drinks on one occasion

& Percent is age-adjusted to the 2000 United States Population.

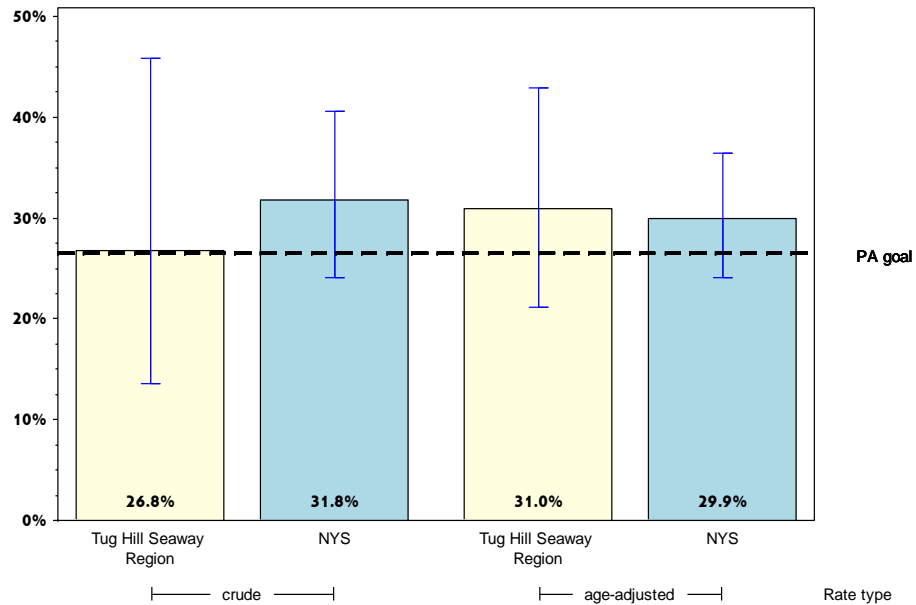
# Rates with <10 in the numerator or <50 in the denominator are suppressed.

<sup>^</sup> Highly variable rate (confidence interval with a half-width greater than 10).

# Jefferson

## Promote Mental Health and Prevention Substance Abuse

### Percentage of cigarette smoking among adults who report poor mental health



#### Jefferson County

#### Tug Hill Seaway

	Est. # of Adults	Percent	95% CI	Est. # of Adults	Percent	95% CI
<b>Total</b>		#		6,154	26.8 <sup>^</sup>	(13.6-45.9)
<b>Age</b>		#			#	
18-24		#			#	
25-34		#			#	
35-44		#			#	
45-64		#		1,605	33.7 <sup>^</sup>	(20.4-50.2)
65+		#			#	
<b>Race</b>		#			#	
White, NH		#		5,143	37.1 <sup>^</sup>	(22.6-54.4)
Black, NH		#			#	
Hispanic		#			#	
Other, NH		#			#	
<b>Sex</b>		#			#	
male		#			#	
female		#		4,386	33.3 <sup>^</sup>	(15.4-57.9)
<b>Age-adjusted<sup>&amp;</sup></b>		#			31.0 <sup>^</sup>	(21.1-42.9)

& Percent is age-adjusted to the 2000 United States Population.

# Rates with <10 in the numerator or <50 in the denominator are suppressed.

<sup>^</sup> Highly variable rate (confidence interval with a half-width greater than 10).