

# eBRFSS 2013-2014 Health Indicators: Chenango

General Description .....	2
Improve Health Status and Reduce Health Disparities .....	3
Percentage of adults who did not receive medical care because of cost .....	3
Percentage of adults who have a regular health care provider .....	4
Percentage of adults who had a dentist visit within the past year .....	5
Percentage of adults living with a disability.....	6
Percentage of adults aged 18-64 years with healthcare coverage .....	7
Percentage of adults aged 18-64 years who saw a doctor for a routine checkup within the last year .....	8
Percentage of adults experiencing housing insecurity in the past 12 months.....	9
Percentage of adults experiencing food insecurity in the past 12 months.....	10
Percentage of adults with poor self-reported health .....	11
Percentage of adults who report 14 or more days of poor physical health.....	12
Prevent Chronic Diseases .....	13
Percentage of adults who are obese .....	13
Percentage of adults with an annual household income less than \$25,000 who are obese .....	14
Percentage of adults living with a disability who are obese .....	15
Percentage of adults overweight or obese .....	16
Percentage of adults who participated in leisure time physical activity in the past 30 days.....	17
Percentage of adults who consume one or more sugary drinks daily .....	18
Percentage of adults who consume fast-food three or more times per week .....	19
Percentage of adults with physician diagnosed diabetes .....	20
Percentage of adults who are current smokers.....	21
Percentage of adults with annual household income less than \$25,000 who are current smokers .....	22
Percentage of adults aged 18-24 years who are current smokers.....	23
Percentage of women aged 50-74 years receiving breast cancer screening based on recent guidelines .....	24
Percentage of women aged 50-74 years with annual household income of less than \$25,000 receiving breast cancer screening based on recent guidelines.....	25
Percentage of women aged 21-65 years receiving cervical cancer screening based on recent guidelines .....	26
Percentage of women aged 21-65 years with annual household income of less than \$25,000 receiving cervical cancer screening based on recent guidelines.....	27
Percentage of adults aged 50-75 years receiving colorectal cancer screening based on recent guidelines.....	28
Percentage of adults aged 50-75 years with annual household income less than \$25,000 receiving colorectal cancer screening based on recent guidelines.....	29
Percentage of adults who had a test for high blood sugar or diabetes within the past three years .....	30
Percentage of adults with physician-diagnosed prediabetes .....	31
Percentage of adults with physician-diagnosed high blood pressure.....	32
Percentage of adults with diagnosed high blood pressure taking high blood pressure medication .....	33
Percentage of adults with current asthma .....	34
Percent of adults with cholesterol checked.....	35
Percentage of adults 18 years and older with elevated cholesterol.....	36
Percentage of adults who have taken a course or class to learn how to manage their chronic disease or condition .....	37
Percentage of adults with arthritis .....	38
Promote a Healthy and Safe Environment .....	39
Percentage of adults who consider their neighborhood suitable for walking and physical activity.....	39
Percentage of adults aged 65+ years with at least one fall in the past 12 months.....	40
Among adults aged 65+ years with at least one fall in the past 12 months, percent that resulted in injury.....	41
Prevent HIV/STDs, Vaccine Preventable Diseases and Healthcare-Associated Infections.....	42
Percentage of adults aged 47-68 years reporting ever tested for Hepatitis C (HCV).....	42
Percentage of adults aged 18+ years with flu immunization in the past year .....	43
Percentage of adults aged 65+ years with flu immunization in the past year .....	44
Percentage of adults aged 65+ years with pneumococcal immunization.....	45
Promote Healthy Women, Infants, and Children .....	46
Percentage of women aged 18-44 years who had dental visit within the last year .....	46
Women aged 18-44 years who saw a doctor for a routine checkup within the last year.....	47
Percentage of women aged 18-64 years with health care coverage .....	48
Percentage of women aged 18-44 years whose health care provider discussed planning a healthy pregnancy .....	49
Promote Mental Health and Prevention Substance Abuse .....	50
Percentage of adults with poor mental health for 14 or more days in the last month .....	50
Percentage of adult binge drinking during the past month.....	51
Percentage of cigarette smoking among adults who report poor mental health.....	52

## General Description

The New York State Expanded Behavioral Risk Factor Surveillance System 2013-2014 (2014 eBRFSS) was design to supplement the Center for Disease Control and Prevention (CDC) Behavioral Risk Factor Surveillance System (BRFSS), which is conducted annually in New York State. The purpose of the 2014 eBRFSS was to produce local information on key public health issues. Data for the project were collected from April 15, 2013 to May 10, 2014. The 2014 eBRFSS reached both households with landline telephones and households which only had cell phones. Like the annual BRFSS, New York State's 2014 eBRFSS was designed to be representative of the non-institutionalized adult household population, aged 18 years and older.

### Reported Health Indicators

There are a total of 50 health indicators included in the report. The health indicators include 10 measures included in the New York State Department of Health's Prevention Agenda, NYS Health Innovation Plan (SHIP), Delivery System Reform Incentive Payment (DSRIP) Program, or the NYS Community Health Indicator Reports (CHIRS). An additional 40 important health indicators are also included. The indicators are organized by the Priority Area of the Prevention Agenda and are reported statewide, by region, and by county.

### Data Collection Methodology, Sampling and Weighting

The data collection methods for the 2014 eBRFSS aligned with the CDC's standard annual BRFSS methods. The 2014 eBRFSS questionnaire used standard questions from the BRFSS. Survey interviews were conducted in both English and Spanish. There were 31,690 completed interviews.

The sampling plan for the eBRFSS was developed to result in valid health indicator estimates for New York City (NYC) and each of the 57 counties outside NYC. The sampling approach stratified landlines by county and implemented a disproportionate stratified sampling design that accounted for both listed-households and unlisted numbers. Cell phone households were accounted for through additional strata that covered contiguous groups of counties.

Data were weighted to represent the population using a methodology known as iterative proportional fitting (raking). Raking adjusted the data so that groups underrepresented in the sample were more accurately represented in the estimated rates. Raking also enabled surveys conducted by cell phone to be included in the weighting and to accurately match sample distributions of specified demographic characteristics of the population. The raking categories included in the eBRFSS were: age, gender, race/ethnicity, education, marital status, owner/renter status, telephone usage (i.e. landline and cell phone combinations), and county of residence.

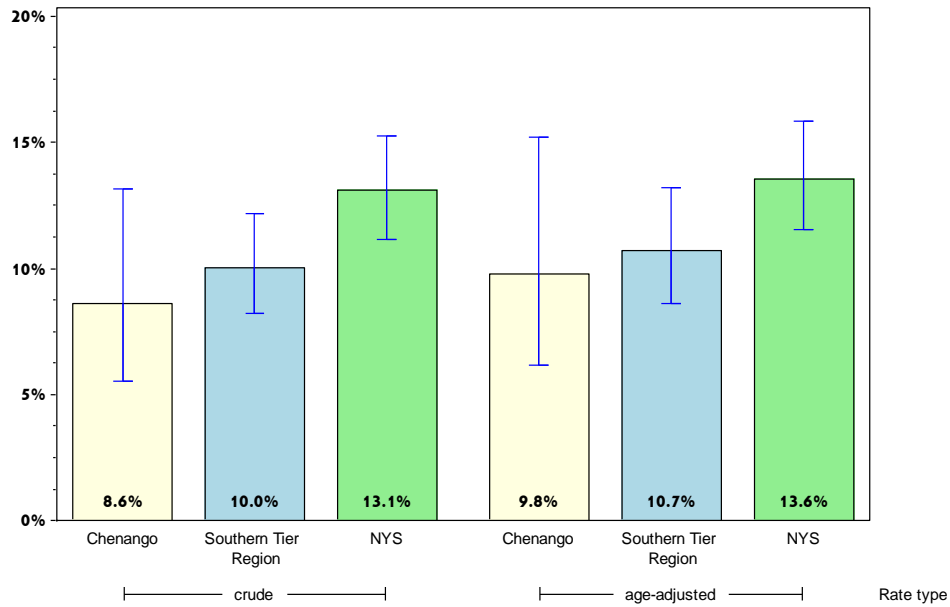
### Limitations of Data Use:

During data analysis, criteria were applied to suppress rates based on too few surveys to be reliable and to identify rates that are highly variable. Rates in which less than 10 respondents were in the numerator or less than 50 respondents were in the denominator were considered unreliable and suppressed from reporting. Rates considered to have high variability due to having confidence limits greater than  $\pm 10\%$  are noted.

# Chenango

## Improve Health Status and Reduce Health Disparities

Percentage of adults who did not receive medical care because of cost\*



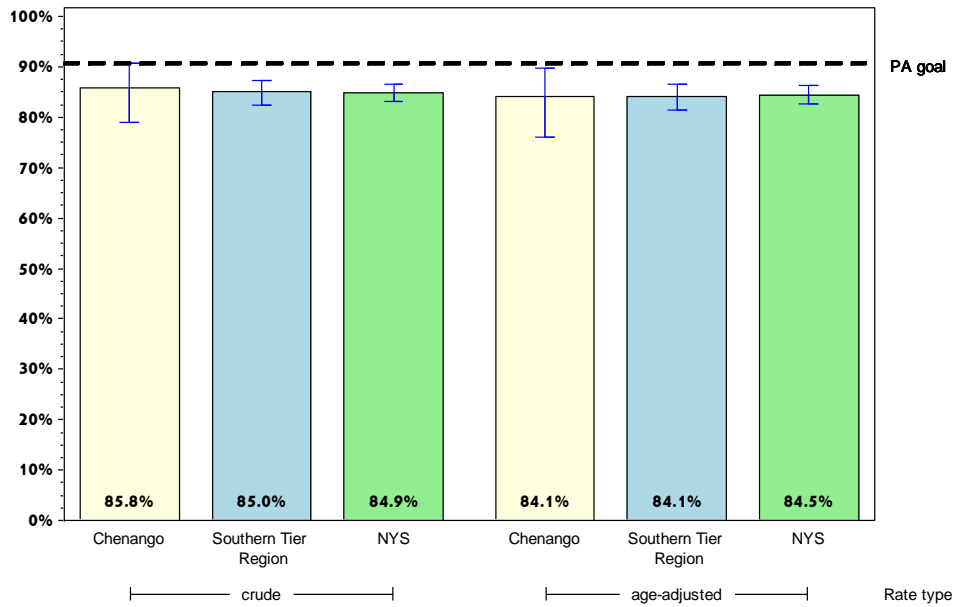
	Chenango County			Southern Tier		
	Est. # of Adults	Percent	95% CI	Est. # of Adults	Percent	95% CI
<b>Total</b>	3,341	8.6	(5.5-13.1)	36,229	10.0	(8.2-12.2)
<b>Age</b>		#				
18-24		#		3,485	6.2	(3.1-11.9)
25-34		#		7,509	12.3	(7.7-19.0)
35-44		#		6,772	14.2	(8.3-23.3)
45-64	905	6.4	(3.0-13.1)	16,052	13.5	(10.3-17.5)
65+		#		2,128	2.9	(1.8-4.6)
<b>Race</b>						
White, NH	2,897	8.3	(5.3-12.9)	28,746	9.5	(7.7-11.8)
Black, NH		#			#	
Hispanic		#			#	
Other, NH		#		1,904	7.0	(3.2-14.7)
<b>Sex</b>						
male	1,122	5.9	(2.5-12.9)	16,682	9.4	(7.2-12.3)
female	2,219	11.3	(6.7-18.3)	19,547	10.6	(7.9-13.9)
<b>Age-adjusted<sup>&amp;</sup></b>		9.8	(6.2-15.2)		10.7	(8.6-13.2)

\* Among people needing to see a doctor in the past 12 months  
 & Percent is age-adjusted to the 2000 United States Population.  
 # Rates with <10 in the numerator or <50 in the denominator are suppressed.

# Chenango

## Improve Health Status and Reduce Health Disparities

### Percentage of adults who have a regular health care provider



#### Chenango County

#### Southern Tier

	Est. # of Adults	Percent	95% CI	Est. # of Adults	Percent	95% CI
<b>Total</b>	33,458	85.8	(79.0-90.6)	305,033	85.0	(82.4-87.2)
<b>Age</b>		#				
18-24		#		42,341	75.8 <sup>^</sup>	(64.6-84.3)
25-34		#		47,402	77.7	(69.2-84.4)
35-44		#		37,697	79.2	(71.3-85.4)
45-64	12,070	85.5 <sup>^</sup>	(74.3-92.3)	105,441	89.5	(86.3-92.0)
65+	8,554	96.7	(90.9-98.8)	67,547	93.9	(90.9-95.9)
<b>Race</b>						
White, NH	29,467	84.1	(76.8-89.5)	253,550	84.9	(82.3-87.2)
Black, NH		#			#	
Hispanic		#			#	
Other, NH		#		22,327	81.9 <sup>^</sup>	(68.4-90.4)
<b>Sex</b>						
male	15,347	79.4 <sup>^</sup>	(68.0-87.5)	136,951	77.5	(73.5-81.1)
female	18,111	92.0	(84.7-95.9)	168,081	92.2	(88.9-94.6)
<b>Age-adjusted<sup>&amp;</sup></b>		84.1	(76.0-89.8)		84.1	(81.3-86.5)

& Percent is age-adjusted to the 2000 United States Population.

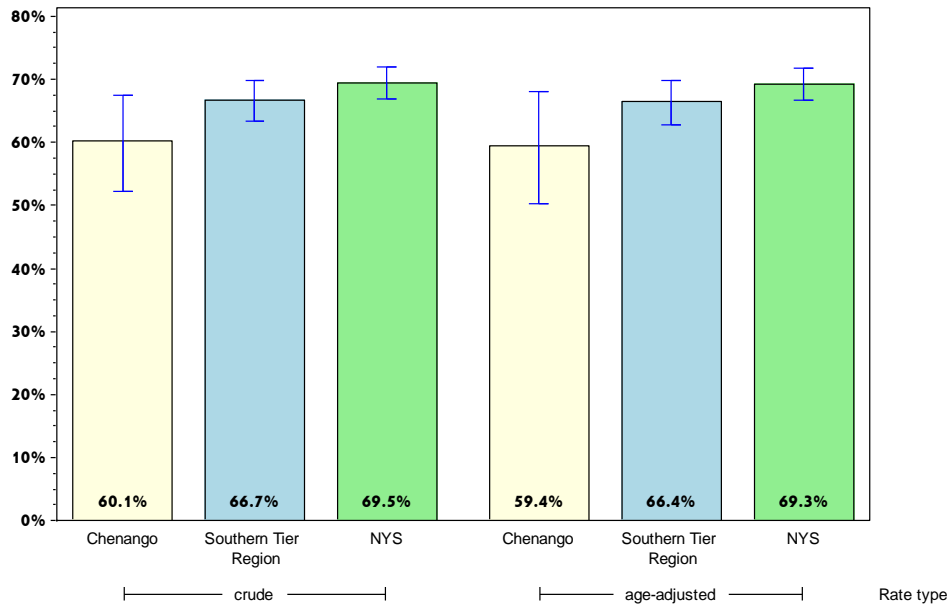
# Rates with <10 in the numerator or <50 in the denominator are suppressed.

<sup>^</sup> Highly variable rate (confidence interval with a half-width greater than 10).

# Chenango

## Improve Health Status and Reduce Health Disparities

### Percentage of adults who had a dentist visit within the past year



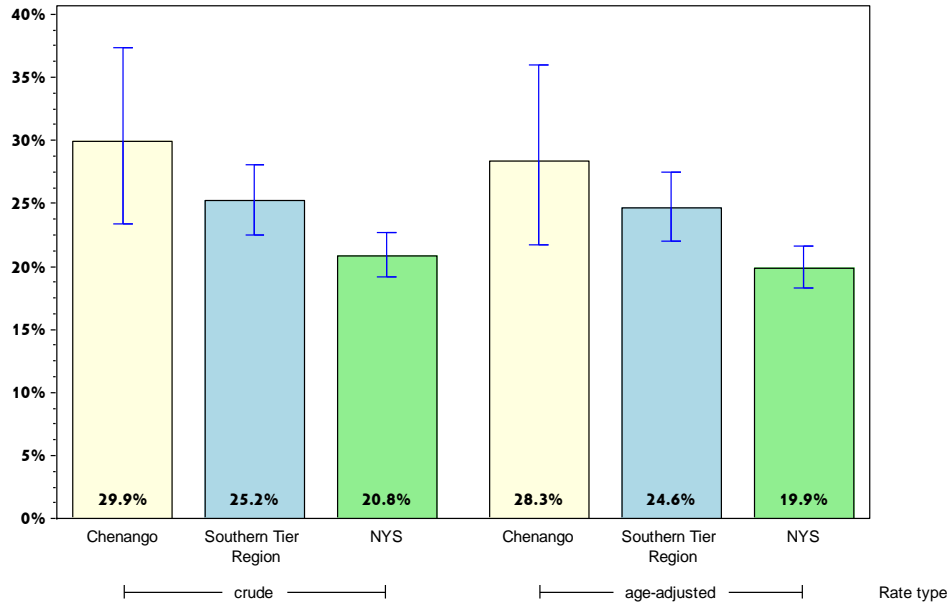
	Chenango County			Southern Tier		
	Est. # of Adults	Percent	95% CI	Est. # of Adults	Percent	95% CI
<b>Total</b>	22,013	60.1	(52.2-67.5)	220,423	66.7	(63.4-69.8)
<b>Age</b>		#				
18-24		#		29,851	66.4 <sup>^</sup>	(54.2-76.8)
25-34		#		36,594	65.9 <sup>^</sup>	(55.2-75.2)
35-44		#		28,479	64.5	(54.6-73.3)
45-64	7,850	59.4 <sup>^</sup>	(48.3-69.6)	77,932	68.5	(63.7-73.0)
65+	4,651	56.9 <sup>^</sup>	(44.8-68.2)	44,963	65.7	(60.9-70.2)
<b>Race</b>						
White, NH	20,410	62.6	(55.0-69.6)	188,016	66.6	(63.2-69.7)
Black, NH		#			#	
Hispanic		#			#	
Other, NH		#		16,234	73.3 <sup>^</sup>	(57.0-85.0)
<b>Sex</b>						
male	10,388	56.8 <sup>^</sup>	(44.8-68.0)	102,550	62.3	(57.5-67.0)
female	11,625	63.5	(53.9-72.1)	117,873	71.0	(66.6-75.0)
<b>Age-adjusted<sup>&amp;</sup></b>		59.4	(50.2-68.0)		66.4	(62.8-69.8)

& Percent is age-adjusted to the 2000 United States Population.  
 # Rates with <10 in the numerator or <50 in the denominator are suppressed.  
 ^ Highly variable rate (confidence interval with a half-width greater than 10).

# Chenango

## Improve Health Status and Reduce Health Disparities

### Percentage of adults living with a disability\*



#### Chenango County

#### Southern Tier

	Est. # of Adults	Percent	95% CI	Est. # of Adults	Percent	95% CI
<b>Total</b>	11,520	29.9	(23.4-37.4)	89,618	25.2	(22.5-28.1)
<b>Age</b>		#				
18-24		#		4,554	8.2	(4.3-15.1)
25-34		#		12,577	21.1 <sup>^</sup>	(13.6-31.4)
35-44		#		8,889	19.4	(13.5-27.2)
45-64	4,057	28.7	(20.9-38.1)	36,485	30.8	(26.7-35.3)
65+	3,218	36.4 <sup>^</sup>	(26.0-48.4)	26,446	36.6	(31.9-41.5)
<b>Race</b>						
White, NH	9,065	26.2	(20.6-32.7)	77,336	26.0	(23.3-28.9)
Black, NH		#			#	
Hispanic		#			#	
Other, NH		#		5,878	23.1 <sup>^</sup>	(12.8-38.2)
<b>Sex</b>						
male	7,554	39.1 <sup>^</sup>	(28.4-50.9)	43,459	24.9	(21.0-29.2)
female	3,966	20.7	(14.8-28.1)	46,159	25.5	(21.9-29.5)
<b>Age-adjusted<sup>&amp;</sup></b>		28.3	(21.7-36.0)		24.6	(22.0-27.5)

\* Limited activities (physical, mental, or emotional problems); need of special equipment (e.g. cane, wheel chair).

& Percent is age-adjusted to the 2000 United States Population.

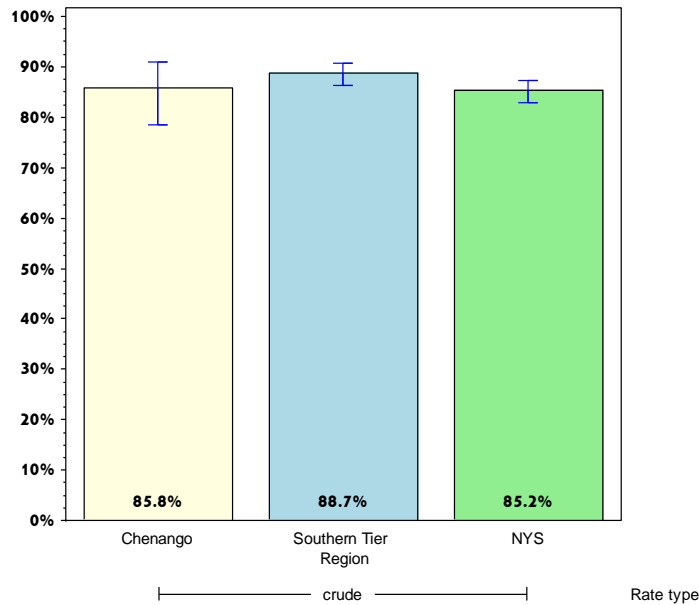
# Rates with <10 in the numerator or <50 in the denominator are suppressed.

<sup>^</sup> Highly variable rate (confidence interval with a half-width greater than 10).

# Chenango

## Improve Health Status and Reduce Health Disparities

### Percentage of adults aged 18-64 years with healthcare coverage



#### Chenango County

#### Southern Tier

	Est. # of Adults	Percent	95% CI	Est. # of Adults	Percent	95% CI
<b>Total</b>	25,012	85.8	(78.5-90.8)	245,502	88.7	(86.2-90.8)
<b>Age<sup>+</sup></b>						
18-24						
25-34						
35-44						
45-64						
65+						
<b>Race</b>						
White, NH	22,220	84.7	(77.0-90.2)	203,392	88.5	(85.9-90.7)
Black, NH		#			#	
Hispanic		#			#	
Other, NH		#		19,259	91.4 <sup>^</sup>	(78.8-96.8)
<b>Sex</b>						
male	11,236	80.4 <sup>^</sup>	(67.2-89.1)	119,966	86.4	(82.8-89.3)
female	13,776	90.7	(84.0-94.8)	125,536	91.0	(87.3-93.7)
<b>Age-adjusted<sup>+,&amp;</sup></b>						

& Percent is age-adjusted to the 2000 United States Population.

+ Age-adjusted and age specific percent not generated for health indicators with age range limits.

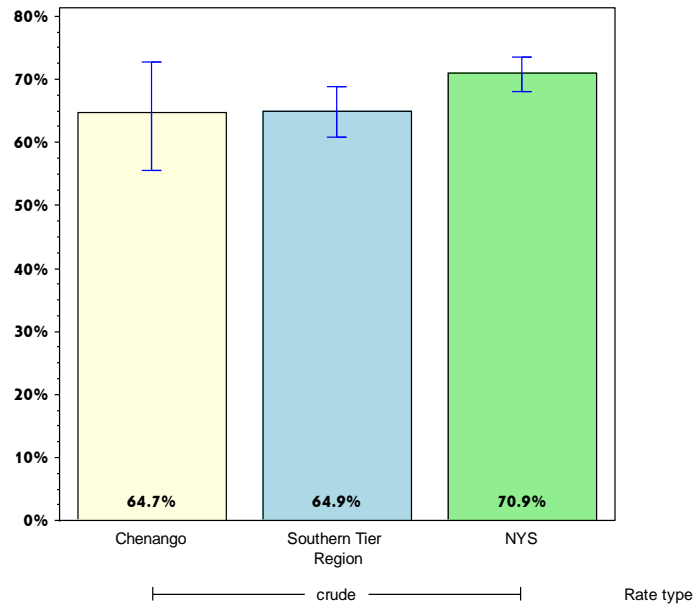
# Rates with <10 in the numerator or <50 in the denominator are suppressed.

<sup>^</sup> Highly variable rate (confidence interval with a half-width greater than 10).

# Chenango

## Improve Health Status and Reduce Health Disparities

Percentage of adults aged 18-64 years who saw a doctor for a routine checkup within the last year



### Chenango County

### Southern Tier

	Est. # of Adults	Percent	95% CI	Est. # of Adults	Percent	95% CI
<b>Total</b>	18,440	64.7	(55.6-72.8)	182,948	64.9	(60.8-68.8)
<b>Age<sup>+</sup></b>						
18-24						
25-34						
35-44						
45-64						
65+						
<b>Race</b>						
White, NH	16,114	63.0	(53.7-71.4)	143,786	62.5	(58.3-66.5)
Black, NH		#			#	
Hispanic		#			#	
Other, NH		#		13,771	65.4 <sup>^</sup>	(47.0-80.2)
<b>Sex</b>						
male	7,585	56.1 <sup>^</sup>	(42.3-69.1)	78,883	56.8	(51.1-62.4)
female	10,855	72.4 <sup>^</sup>	(60.2-82.0)	104,066	72.8	(67.0-77.9)
<b>Age-adjusted<sup>+,&amp;</sup></b>						

& Percent is age-adjusted to the 2000 United States Population.

+ Age-adjusted and age specific percent not generated for health indicators with age range limits.

# Rates with <10 in the numerator or <50 in the denominator are suppressed.

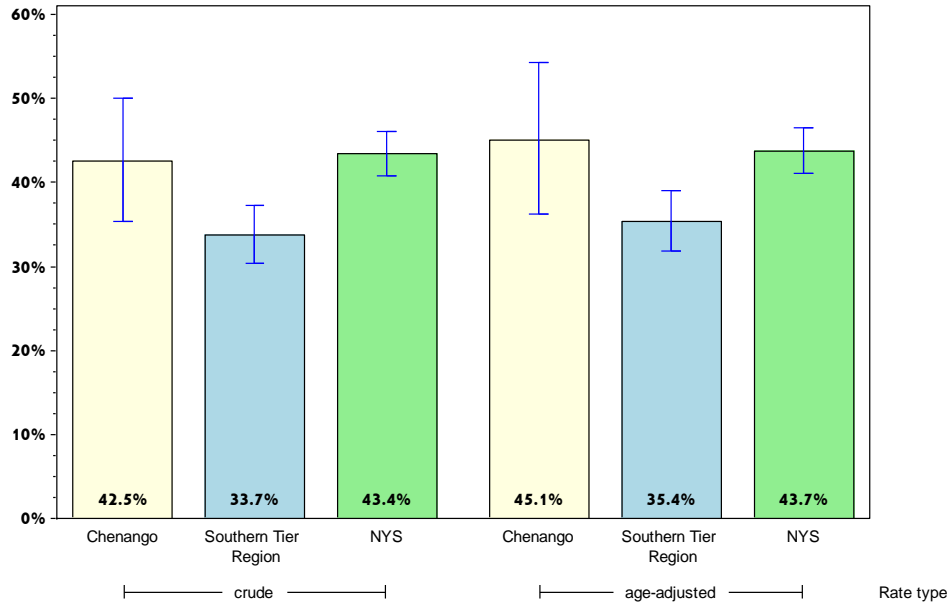
<sup>^</sup> Highly variable rate (confidence interval with a half-width greater than 10).



# Chenango

## Improve Health Status and Reduce Health Disparities

### Percentage of adults experiencing housing insecurity in the past 12 months\*



#### Chenango County

#### Southern Tier

	Est. # of Adults	Percent	95% CI	Est. # of Adults	Percent	95% CI
<b>Total</b>	14,994	42.5	(35.3-50.1)	110,120	33.7	(30.4-37.2)
<b>Age</b>		#				
18-24		#		13,414	30.9 <sup>^</sup>	(19.6-45.0)
25-34		#		20,168	36.6 <sup>^</sup>	(27.2-47.0)
35-44		#		21,029	46.7	(37.1-56.5)
45-64	5,760	43.7 <sup>^</sup>	(33.8-54.2)	42,480	38.1	(33.2-43.2)
65+	1,714	21.7 <sup>^</sup>	(13.8-32.5)	12,309	18.1	(14.2-22.8)
<b>Race</b>						
White, NH	13,814	44.2	(36.9-51.7)	94,835	34.9	(31.5-38.3)
Black, NH		#			#	
Hispanic		#			#	
Other, NH		#		5,731	24.3 <sup>^</sup>	(13.0-40.7)
<b>Sex</b>						
male	7,762	43.3 <sup>^</sup>	(32.2-55.1)	47,371	30.5	(26.3-35.0)
female	7,231	41.7	(33.0-51.0)	62,749	36.6	(31.6-42.0)
<b>Age-adjusted<sup>&amp;</sup></b>		45.1	(36.3-54.2)		35.4	(31.8-39.1)

\* Worried or stressed about having enough money to pay for rent or mortgage.

& Percent is age-adjusted to the 2000 United States Population.

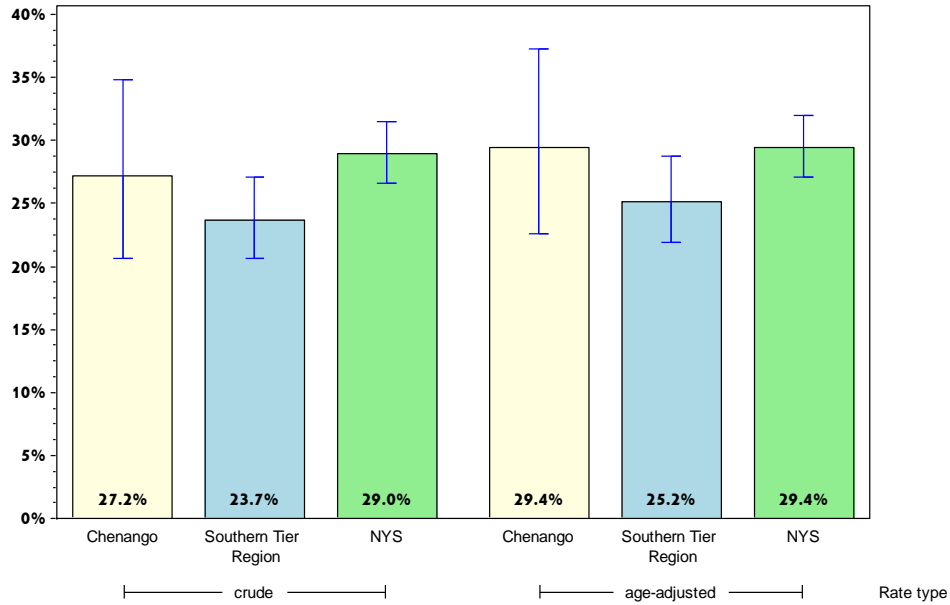
# Rates with <10 in the numerator or <50 in the denominator are suppressed.

<sup>^</sup> Highly variable rate (confidence interval with a half-width greater than 10).

# Chenango

## Improve Health Status and Reduce Health Disparities

### Percentage of adults experiencing food insecurity in the past 12 months\*



#### Chenango County

#### Southern Tier

	Est. # of Adults	Percent	95% CI	Est. # of Adults	Percent	95% CI
<b>Total</b>	10,206	27.2	(20.7-34.9)	82,315	23.7	(20.6-27.1)
<b>Age</b>						
18-24	#	#		12,360	23.2 <sup>^</sup>	(14.6-34.8)
25-34	#	#		13,426	23.0	(16.2-31.4)
35-44	#	#		16,225	35.4 <sup>^</sup>	(26.0-46.1)
45-64	3,190	23.5	(16.2-32.9)	30,573	26.5	(21.5-32.2)
65+	972	11.5	(7.0-18.4)	9,530	13.5	(9.7-18.6)
<b>Race</b>						
White, NH	8,192	24.4	(18.7-31.3)	66,830	23.0	(20.0-26.3)
Black, NH	#	#		#	#	
Hispanic	#	#		#	#	
Other, NH	#	#		7,161	29.6 <sup>^</sup>	(14.1-51.9)
<b>Sex</b>						
male	5,212	28.0 <sup>^</sup>	(17.7-41.2)	34,087	20.1	(16.1-24.9)
female	4,995	26.4	(19.3-34.9)	48,228	27.1	(22.6-32.1)
<b>Age-adjusted<sup>&amp;</sup></b>		29.4	(22.6-37.2)		25.2	(21.9-28.8)

\* Worried or stressed about having enough money to buy nutritious meals.

& Percent is age-adjusted to the 2000 United States Population.

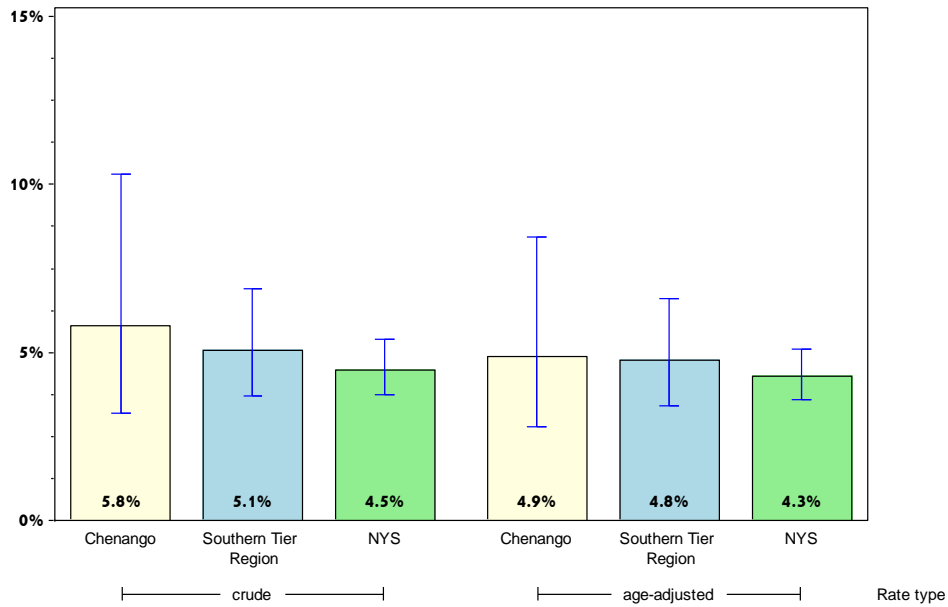
# Rates with <10 in the numerator or <50 in the denominator are suppressed.

<sup>^</sup> Highly variable rate (confidence interval with a half-width greater than 10).

# Chenango

## Improve Health Status and Reduce Health Disparities

### Percentage of adults with poor self-reported health



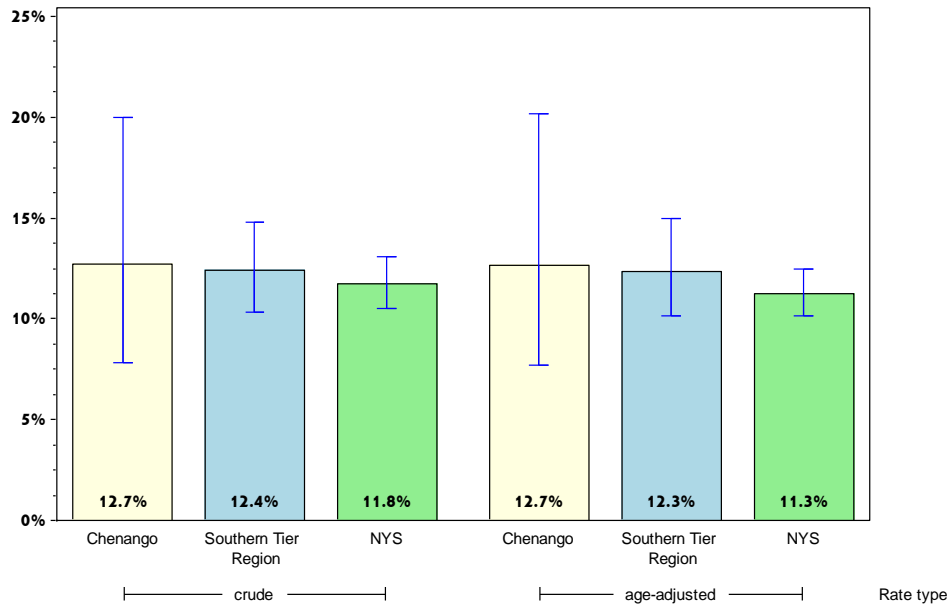
	Chenango County			Southern Tier		
	Est. # of Adults	Percent	95% CI	Est. # of Adults	Percent	95% CI
<b>Total</b>	2,248	5.8	(3.2-10.3)	18,143	5.1	(3.7-6.9)
<b>Age</b>		#			#	
18-24		#			#	
25-34		#			#	
35-44		#			#	
45-64	1,028	7.3	(3.3-15.4)	7,509	6.4	(4.5-9.0)
65+		#		5,843	8.1	(5.8-11.2)
<b>Race</b>						
White, NH	1,309	3.8	(2.1-6.8)	14,079	4.7	(3.2-6.8)
Black, NH		#			#	
Hispanic		#			#	
Other, NH		#		2,274	8.6	(4.0-17.6)
<b>Sex</b>						
male	1,533	8.0	(3.8-15.9)	10,260	5.8	(3.6-9.4)
female		#		7,882	4.3	(3.1-6.1)
<b>Age-adjusted<sup>&amp;</sup></b>		4.9	(2.8-8.4)		4.8	(3.4-6.6)

& Percent is age-adjusted to the 2000 United States Population.  
 # Rates with <10 in the numerator or <50 in the denominator are suppressed.

# Chenango

## Improve Health Status and Reduce Health Disparities

Percentage of adults who report 14 or more days of poor physical health\*



	Chenango County			Southern Tier		
	Est. # of Adults	Percent	95% CI	Est. # of Adults	Percent	95% CI
<b>Total</b>	4,844	12.7	(7.8-20.0)	43,428	12.4	(10.4-14.8)
<b>Age</b>		#			#	
18-24		#			#	
25-34		#		5,741	9.6 <sup>^</sup>	(4.3-20.1)
35-44		#		5,563	12.0	(6.8-20.5)
45-64	1,918	13.9	(8.4-22.1)	17,383	15.3	(12.1-19.0)
65+	1,077	12.3 <sup>^</sup>	(5.2-26.5)	12,114	17.3	(13.5-21.9)
<b>Race</b>						
White, NH	2,986	8.8	(6.0-12.6)	34,674	11.9	(9.9-14.3)
Black, NH		#			#	
Hispanic		#			#	
Other, NH		#		4,940	19.1 <sup>^</sup>	(9.7-34.2)
<b>Sex</b>						
male	3,198	17.2 <sup>^</sup>	(8.8-30.8)	22,786	13.2	(10.1-17.2)
female	1,647	8.4	(4.7-14.8)	20,642	11.6	(9.2-14.5)
<b>Age-adjusted<sup>&amp;</sup></b>		12.7	(7.7-20.2)		12.3	(10.1-14.9)

\* Out of the past 30 days.

& Percent is age-adjusted to the 2000 United States Population.

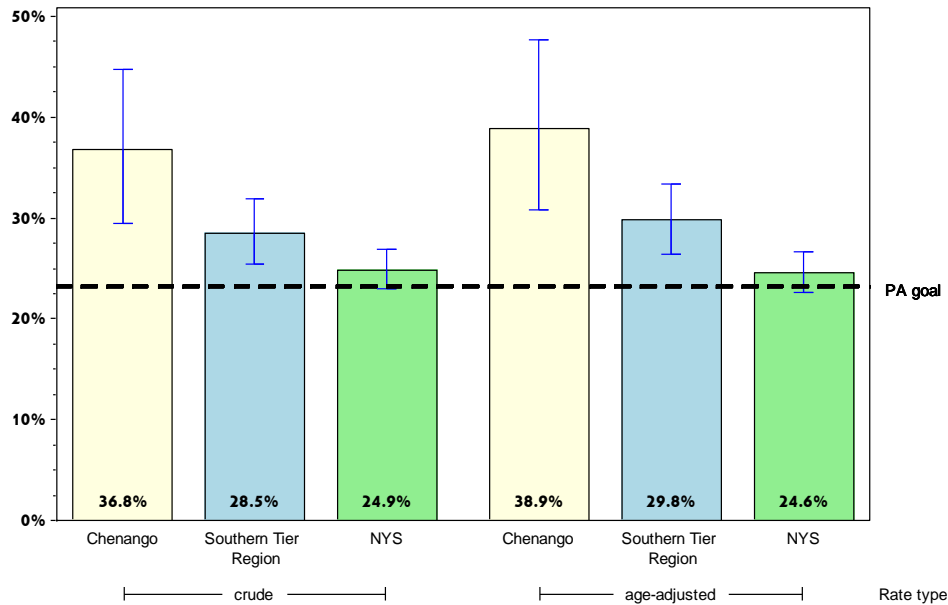
# Rates with <10 in the numerator or <50 in the denominator are suppressed.

<sup>^</sup> Highly variable rate (confidence interval with a half-width greater than 10).

# Chenango

## Prevent Chronic Diseases

### Percentage of adults who are obese\*



#### Chenango County

#### Southern Tier

	Est. # of Adults	Percent	95% CI	Est. # of Adults	Percent	95% CI
<b>Total</b>	13,404	36.8	(29.5-44.8)	95,241	28.5	(25.4-31.9)
<b>Age</b>		#				
18-24		#		7,926	14.8 <sup>^</sup>	(8.1-25.3)
25-34		#		16,121	30.6 <sup>^</sup>	(21.4-41.6)
35-44		#		15,806	36.4 <sup>^</sup>	(27.1-46.9)
45-64	4,270	31.7 <sup>^</sup>	(22.8-42.1)	37,057	32.8	(28.3-37.6)
65+	2,399	28.2 <sup>^</sup>	(18.6-40.4)	18,039	26.4	(21.6-31.9)
<b>Race</b>						
White, NH	11,279	34.4	(27.6-41.9)	82,917	29.7	(26.5-33.1)
Black, NH		#			#	
Hispanic		#			#	
Other, NH		#		4,994	19.2 <sup>^</sup>	(9.3-35.7)
<b>Sex</b>						
male	7,007	36.6 <sup>^</sup>	(26.0-48.6)	49,087	28.2	(23.8-33.0)
female	6,397	37.1 <sup>^</sup>	(27.8-47.4)	46,154	28.9	(24.5-33.7)
<b>Age-adjusted<sup>&amp;</sup></b>		38.9	(30.8-47.6)		29.8	(26.4-33.4)

\* Obesity defined as a Body Mass Index (BMI)  $\geq 30$ . BMI is calculated based on weight and height.

& Percent is age-adjusted to the 2000 United States Population.

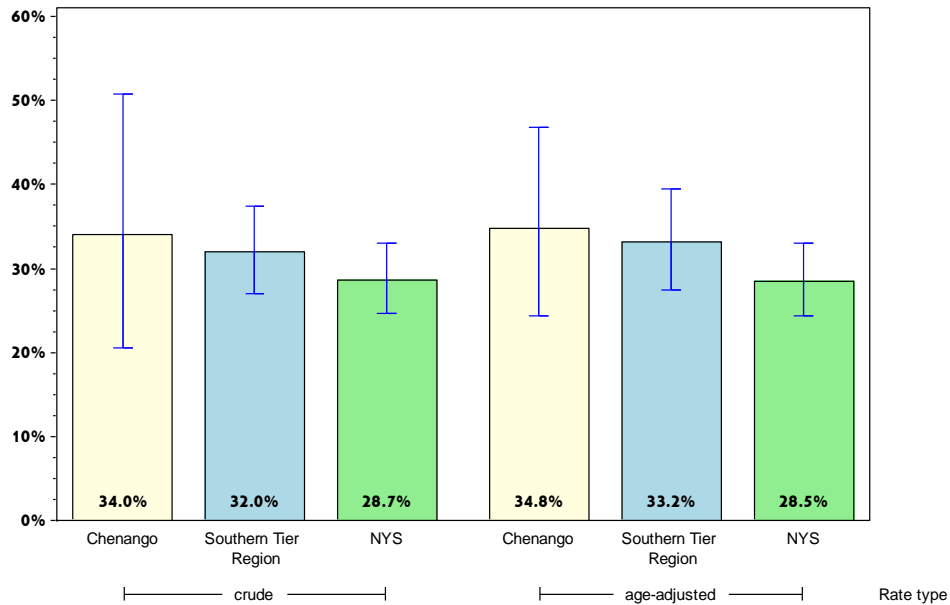
# Rates with  $< 10$  in the numerator or  $< 50$  in the denominator are suppressed.

<sup>^</sup> Highly variable rate (confidence interval with a half-width greater than 10).

# Chenango

## Prevent Chronic Diseases

Percentage of adults with an annual household income less than \$25,000 who are obese\*



### Chenango County

### Southern Tier

	Est. # of Adults	Percent	95% CI	Est. # of Adults	Percent	95% CI
<b>Total</b>	3,762	34.0 <sup>^</sup>	(20.5-50.7)	29,061	32.0	(26.9-37.5)
<b>Age</b>		#			#	
18-24		#			#	
25-34		#		3,472	20.1 <sup>^</sup>	(11.0-33.8)
35-44		#		4,258	44.8 <sup>^</sup>	(26.9-64.2)
45-64		#		12,769	40.5	(31.9-49.7)
65+	768	27.5 <sup>^</sup>	(14.7-45.6)	6,552	28.8	(22.1-36.6)
<b>Race</b>						
White, NH	2,720	28.0 <sup>^</sup>	(18.5-39.9)	24,568	32.3	(27.0-38.0)
Black, NH		#			#	
Hispanic		#			#	
Other, NH		#			#	
<b>Sex</b>						
male	2,244	34.7 <sup>^</sup>	(15.6-60.4)	11,743	25.7	(19.2-33.5)
female	1,518	33.1 <sup>^</sup>	(19.8-49.7)	17,318	38.3	(31.1-46.1)
<b>Age-adjusted<sup>&amp;</sup></b>		34.8 <sup>^</sup>	(24.4-46.8)		33.2	(27.4-39.4)

\* Obesity defined as a Body Mass Index (BMI)  $\geq 30$ . BMI is calculated based on weight and height.

& Percent is age-adjusted to the 2000 United States Population.

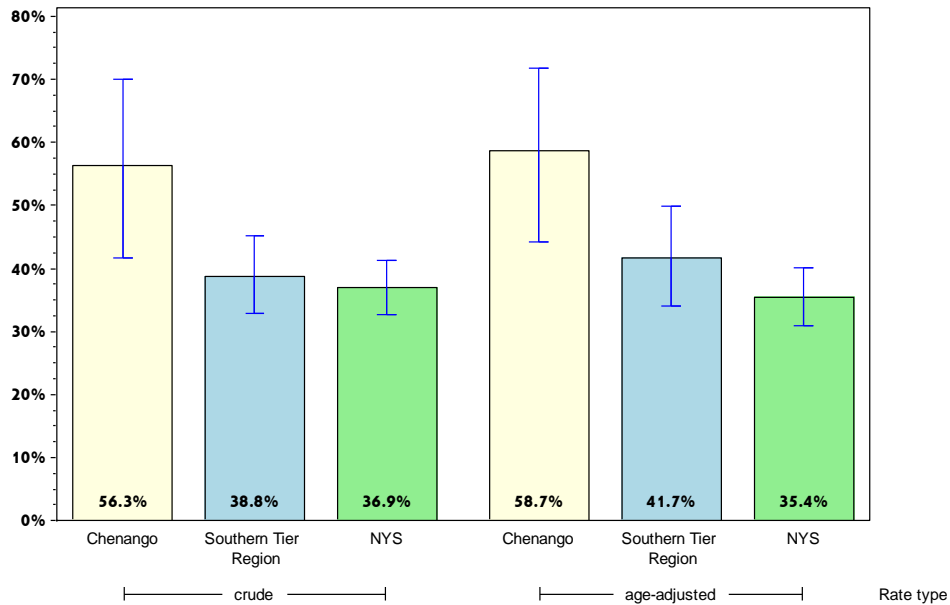
# Rates with  $< 10$  in the numerator or  $< 50$  in the denominator are suppressed.

<sup>^</sup> Highly variable rate (confidence interval with a half-width greater than 10).

# Chenango

## Prevent Chronic Diseases

### Percentage of adults living with a disability who are obese\*



#### Chenango County

#### Southern Tier

	Est. # of Adults	Percent	95% CI	Est. # of Adults	Percent	95% CI
<b>Total</b>	6,299	56.3 <sup>^</sup>	(41.7-70.0)	32,685	38.8	(32.9-45.1)
<b>Age</b>		#			#	
18-24		#			#	
25-34		#			#	
35-44		#			#	
45-64		#		15,081	43.9	(36.0-52.2)
65+	1,087	33.8 <sup>^</sup>	(15.8-58.1)	7,075	27.6	(21.3-35.0)
<b>Race</b>						
White, NH	4,204	48.2 <sup>^</sup>	(34.4-62.2)	26,719	37.0	(30.9-43.7)
Black, NH		#			#	
Hispanic		#			#	
Other, NH		#			#	
<b>Sex</b>						
male	4,027	53.3 <sup>^</sup>	(33.6-72.0)	15,797	36.6 <sup>^</sup>	(27.5-46.8)
female	2,272	62.6 <sup>^</sup>	(45.0-77.4)	16,888	41.2	(34.0-48.7)
<b>Age-adjusted<sup>&amp;</sup></b>		58.7 <sup>^</sup>	(44.3-71.8)		41.7	(34.0-49.9)

\* Obesity defined as a Body Mass Index (BMI)  $\geq 30$ . BMI is calculated based on weight and height. Limited activities (physical, mental, or emotional problems); need of special equipment (e.g. cane, wheel chair).

& Percent is age-adjusted to the 2000 United States Population.

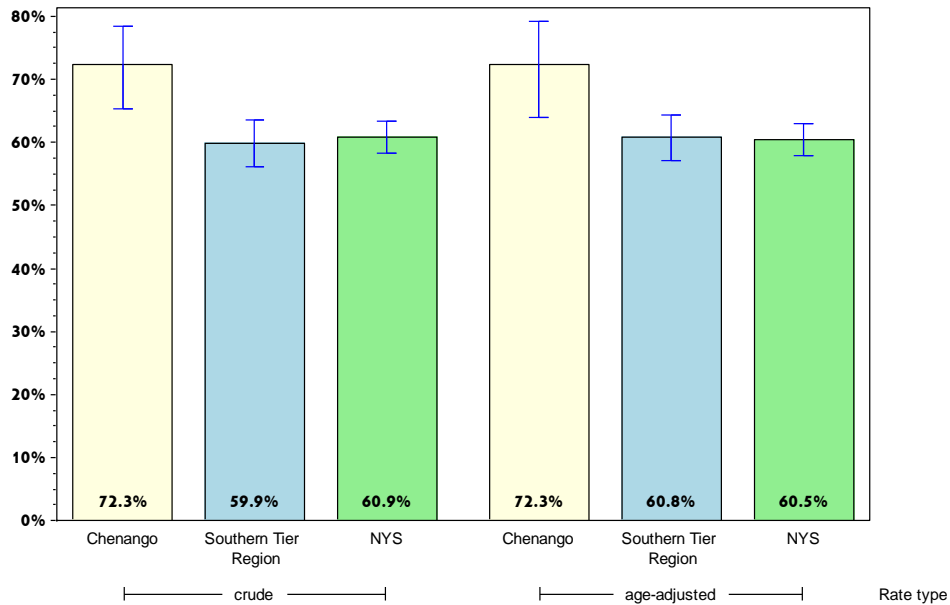
# Rates with  $<10$  in the numerator or  $<50$  in the denominator are suppressed.

<sup>^</sup> Highly variable rate (confidence interval with a half-width greater than 10).

# Chenango

## Prevent Chronic Diseases

### Percentage of adults overweight or obese\*



#### Chenango County

#### Southern Tier

	Est. # of Adults	Percent	95% CI	Est. # of Adults	Percent	95% CI
<b>Total</b>	26,343	72.3	(65.3-78.4)	199,985	59.9	(56.1-63.7)
<b>Age</b>						
18-24	#	#		19,724	36.7 <sup>^</sup>	(25.1-50.2)
25-34	#	#		26,653	50.6 <sup>^</sup>	(40.5-60.7)
35-44	#	#		30,381	70.0	(60.6-78.1)
45-64	10,099	75.0	(65.1-82.8)	76,054	67.3	(62.0-72.3)
65+	5,798	68.2 <sup>^</sup>	(56.7-77.8)	45,261	66.4	(61.6-70.8)
<b>Race</b>						
White, NH	23,207	70.8	(63.6-77.2)	174,723	62.5	(59.1-65.9)
Black, NH	#	#		#	#	
Hispanic	#	#		#	#	
Other, NH	#	#		11,547	44.5 <sup>^</sup>	(28.3-61.9)
<b>Sex</b>						
male	14,613	76.2 <sup>^</sup>	(65.5-84.4)	112,653	64.7	(59.7-69.4)
female	11,730	68.0	(58.4-76.3)	87,331	54.7	(49.0-60.3)
<b>Age-adjusted<sup>&amp;</sup></b>		72.3	(64.0-79.3)		60.8	(57.1-64.3)

\* Defined as a Body Mass Index (BMI)  $\geq 25$ . BMI is calculated based on weight and height.

& Percent is age-adjusted to the 2000 United States Population.

# Rates with  $< 10$  in the numerator or  $< 50$  in the denominator are suppressed.

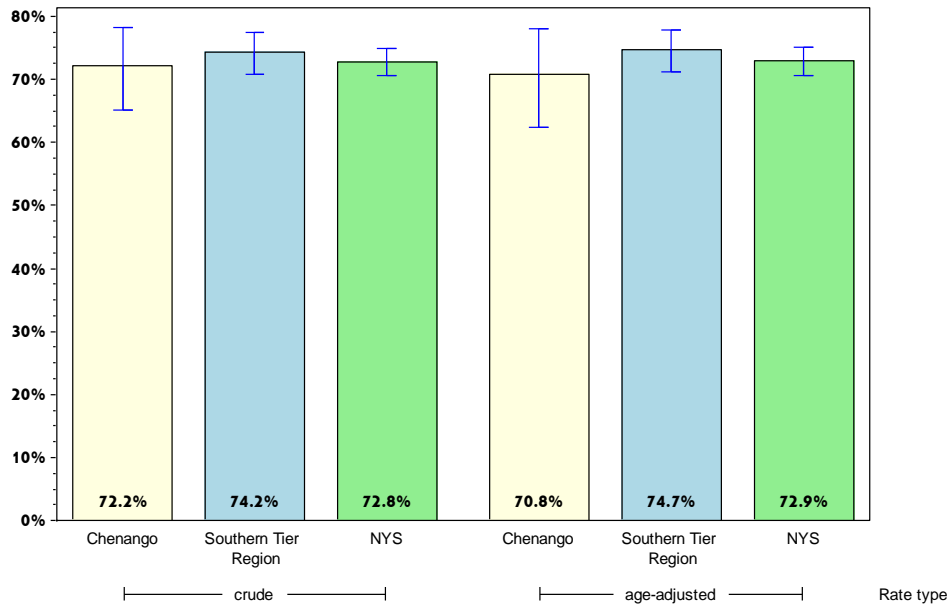
<sup>^</sup> Highly variable rate (confidence interval with a half-width greater than 10).



# Chenango

## Prevent Chronic Diseases

Percentage of adults who participated in leisure time physical activity in the past 30 days\*



### Chenango County

### Southern Tier

	Est. # of Adults	Percent	95% CI	Est. # of Adults	Percent	95% CI
<b>Total</b>	27,336	72.2	(65.1-78.3)	259,735	74.2	(70.9-77.4)
<b>Age</b>		#				
18-24		#		41,971	78.8 <sup>^</sup>	(66.5-87.4)
25-34		#		42,562	71.7 <sup>^</sup>	(58.8-81.7)
35-44		#		36,839	80.3	(72.6-86.3)
45-64	10,115	72.6 <sup>^</sup>	(62.3-80.9)	85,632	73.9	(69.3-78.1)
65+	6,005	71.3 <sup>^</sup>	(60.8-79.9)	48,976	68.8	(64.2-73.1)
<b>Race</b>						
White, NH	24,080	71.1	(63.7-77.4)	213,124	72.9	(69.7-75.9)
Black, NH		#			#	
Hispanic		#			#	
Other, NH		#		22,139	88.7 <sup>^</sup>	(78.0-94.6)
<b>Sex</b>						
male	14,726	77.6	(67.6-85.1)	133,344	78.2	(74.0-81.9)
female	12,609	66.7 <sup>^</sup>	(56.6-75.5)	126,391	70.5	(65.2-75.2)
<b>Age-adjusted<sup>&amp;</sup></b>		70.8	(62.5-78.0)		74.7	(71.2-77.8)

\* Any physical activities or exercises such as running or walking

& Percent is age-adjusted to the 2000 United States Population.

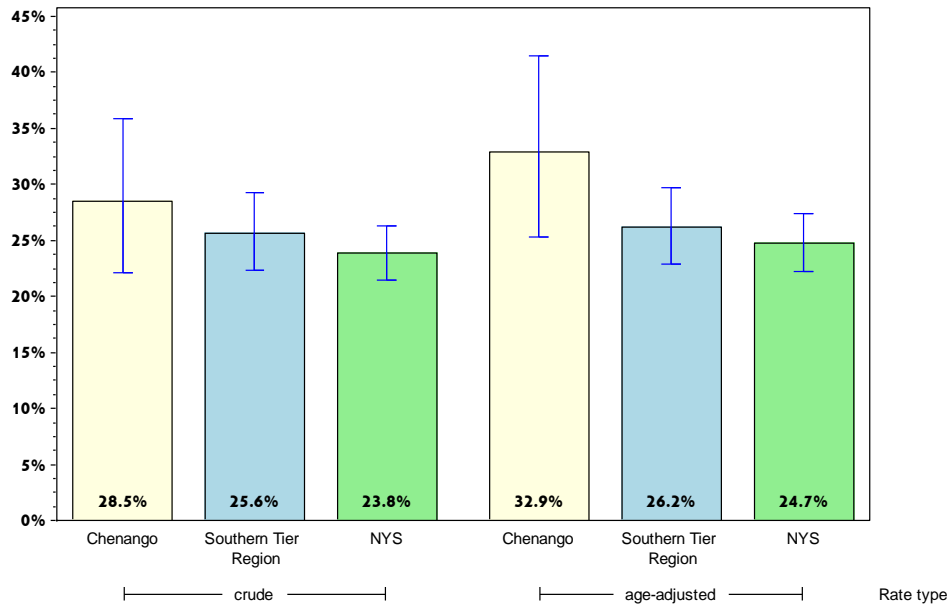
# Rates with <10 in the numerator or <50 in the denominator are suppressed.

<sup>^</sup> Highly variable rate (confidence interval with a half-width greater than 10).

# Chenango

## Prevent Chronic Diseases

### Percentage of adults who consume one or more sugary drinks daily\*



#### Chenango County

#### Southern Tier

	Est. # of Adults	Percent	95% CI	Est. # of Adults	Percent	95% CI
<b>Total</b>	10,604	28.5	(22.1-35.9)	88,098	25.6	(22.3-29.3)
<b>Age</b>		#				
18-24		#		20,979	40.1 <sup>^</sup>	(27.3-54.3)
25-34		#		23,280	40.2 <sup>^</sup>	(29.5-52.0)
35-44		#		11,061	24.2	(18.0-31.8)
45-64	3,355	25.0 <sup>^</sup>	(16.0-36.7)	23,746	20.8	(17.0-25.1)
65+	1,040	12.4	(7.3-20.4)	8,799	12.6	(10.0-15.8)
<b>Race</b>						
White, NH	8,853	26.6	(20.3-34.2)	71,236	24.8	(21.6-28.3)
Black, NH		#			#	
Hispanic		#			#	
Other, NH		#		4,913	20.3 <sup>^</sup>	(11.0-34.3)
<b>Sex</b>						
male	4,527	24.3 <sup>^</sup>	(15.9-35.3)	44,773	26.7	(22.6-31.2)
female	6,077	32.7 <sup>^</sup>	(23.8-43.0)	43,325	24.6	(19.6-30.4)
<b>Age-adjusted<sup>&amp;</sup></b>		32.9	(25.3-41.5)		26.2	(22.9-29.7)

\* Sugary drinks include regular soda, and sugar-sweetened drinks.

& Percent is age-adjusted to the 2000 United States Population.

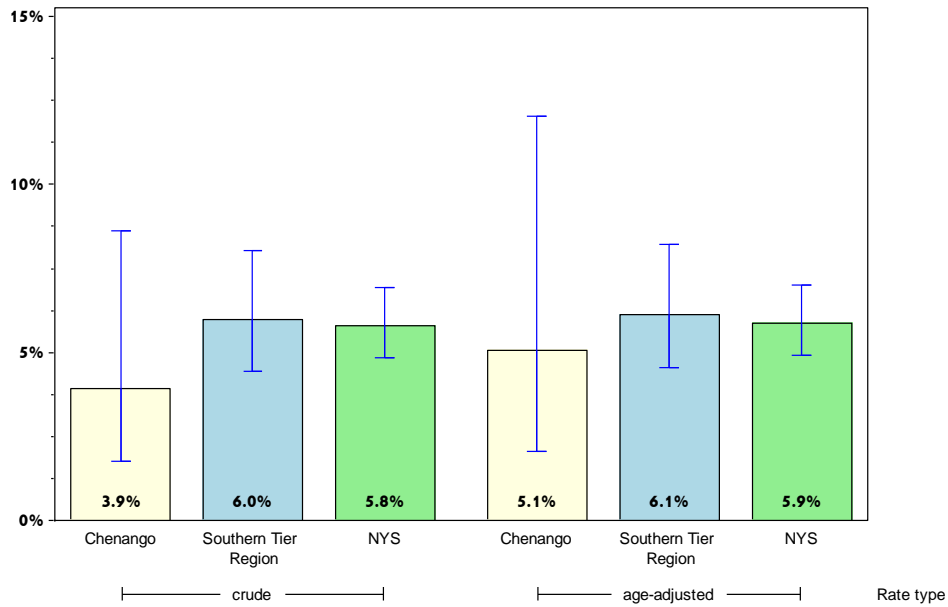
# Rates with <10 in the numerator or <50 in the denominator are suppressed.

<sup>^</sup> Highly variable rate (confidence interval with a half-width greater than 10).

# Chenango

## Prevent Chronic Diseases

### Percentage of adults who consume fast-food three or more times per week



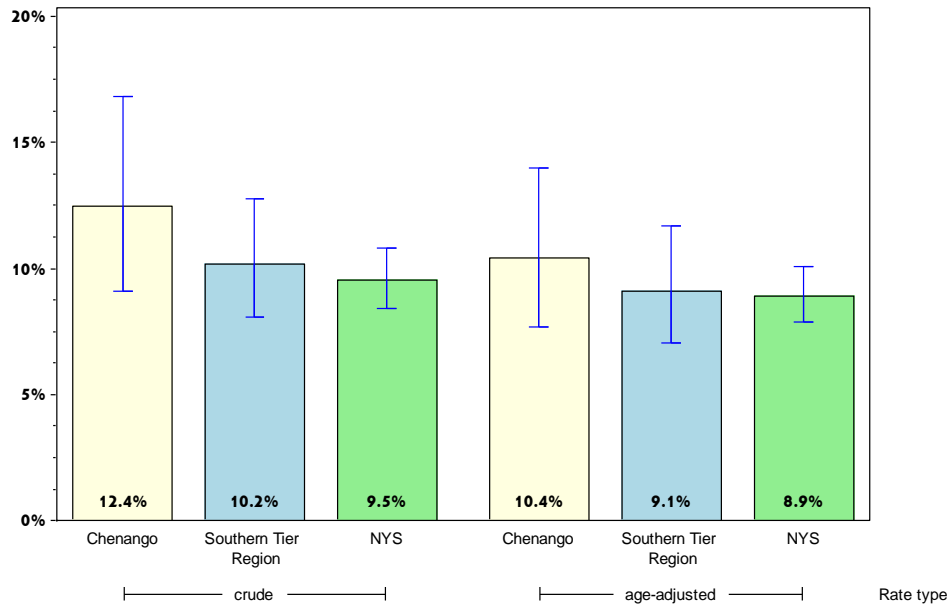
	Chenango County			Southern Tier		
	Est. # of Adults	Percent	95% CI	Est. # of Adults	Percent	95% CI
<b>Total</b>	1,463	3.9	(1.8-8.6)	20,347	6.0	(4.5-8.0)
<b>Age</b>		#			#	
18-24		#			#	
25-34		#		6,344	11.0	(6.3-18.6)
35-44		#		2,414	5.3	(2.5-10.8)
45-64		#		5,371	4.7	(2.9-7.5)
65+		#		1,671	2.4	(1.4-4.1)
<b>Race</b>						
White, NH	1,359	4.1	(1.7-9.4)	15,486	5.4	(3.9-7.5)
Black, NH		#			#	
Hispanic		#			#	
Other, NH		#			#	
<b>Sex</b>						
male		#		12,975	7.9	(5.5-11.2)
female		#		7,372	4.2	(2.6-6.9)
<b>Age-adjusted<sup>&amp;</sup></b>		5.1	(2.0-12.0)		6.1	(4.5-8.2)

& Percent is age-adjusted to the 2000 United States Population.  
 # Rates with <10 in the numerator or <50 in the denominator are suppressed.

# Chenango

## Prevent Chronic Diseases

### Percentage of adults with physician diagnosed diabetes\*



	Chenango County			Southern Tier		
	Est. # of Adults	Percent	95% CI	Est. # of Adults	Percent	95% CI
<b>Total</b>	4,857	12.4	(9.1-16.8)	36,788	10.2	(8.1-12.7)
<b>Age</b>		#			#	
18-24		#			#	
25-34		#			#	
35-44		#			#	
45-64	2,457	17.4	(11.0-26.5)	14,046	11.8	(9.1-15.1)
65+	1,942	21.9	(14.6-31.4)	16,124	22.1	(17.8-27.1)
<b>Race</b>						
White, NH	4,379	12.5	(9.1-16.9)	27,473	9.1	(7.8-10.7)
Black, NH		#			#	
Hispanic		#			#	
Other, NH		#		4,025	14.8 <sup>^</sup>	(6.9-28.9)
<b>Sex</b>						
male	2,454	12.7	(7.9-19.7)	16,397	9.3	(7.2-11.9)
female	2,402	12.2	(7.9-18.4)	20,391	11.1	(7.7-15.6)
<b>Age-adjusted<sup>&amp;</sup></b>		10.4	(7.7-14.0)		9.1	(7.1-11.7)

\* As diagnosed by a health professional.

& Percent is age-adjusted to the 2000 United States Population.

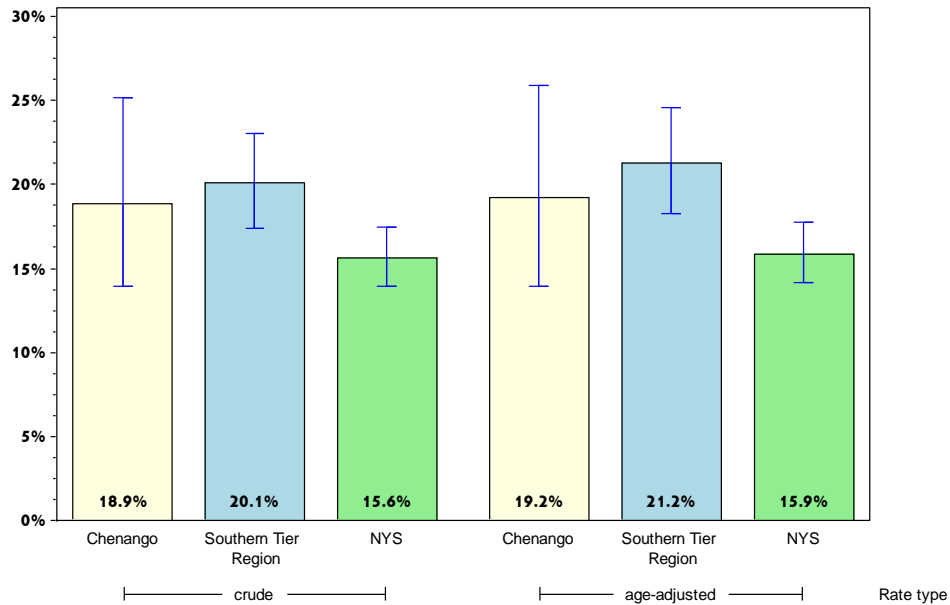
# Rates with <10 in the numerator or <50 in the denominator are suppressed.

<sup>^</sup> Highly variable rate (confidence interval with a half-width greater than 10).

# Chenango

## Prevent Chronic Diseases

### Percentage of adults who are current smokers



#### Chenango County

#### Southern Tier

	Est. # of Adults	Percent	95% CI	Est. # of Adults	Percent	95% CI
<b>Total</b>	7,285	18.9	(13.9-25.1)	71,044	20.1	(17.4-23.0)
<b>Age</b>		#				
18-24		#		9,973	18.3 <sup>^</sup>	(10.8-29.1)
25-34		#		15,353	26.0	(18.4-35.4)
35-44		#		12,078	26.2 <sup>^</sup>	(17.7-36.9)
45-64	3,204	22.7	(15.1-32.6)	28,406	24.0	(20.1-28.4)
65+	692	7.9	(4.0-14.8)	5,115	7.1	(5.2-9.7)
<b>Race</b>						
White, NH	6,649	19.2	(14.0-25.7)	63,096	21.3	(18.5-24.5)
Black, NH		#			#	
Hispanic		#			#	
Other, NH		#		3,338	13.4 <sup>^</sup>	(7.1-23.9)
<b>Sex</b>						
male	3,696	19.2 <sup>^</sup>	(11.9-29.5)	36,695	21.1	(17.4-25.4)
female	3,589	18.6	(12.7-26.4)	34,348	19.1	(15.4-23.3)
<b>Age-adjusted<sup>&amp;</sup></b>		19.2	(14.0-25.9)		21.2	(18.3-24.6)

& Percent is age-adjusted to the 2000 United States Population.

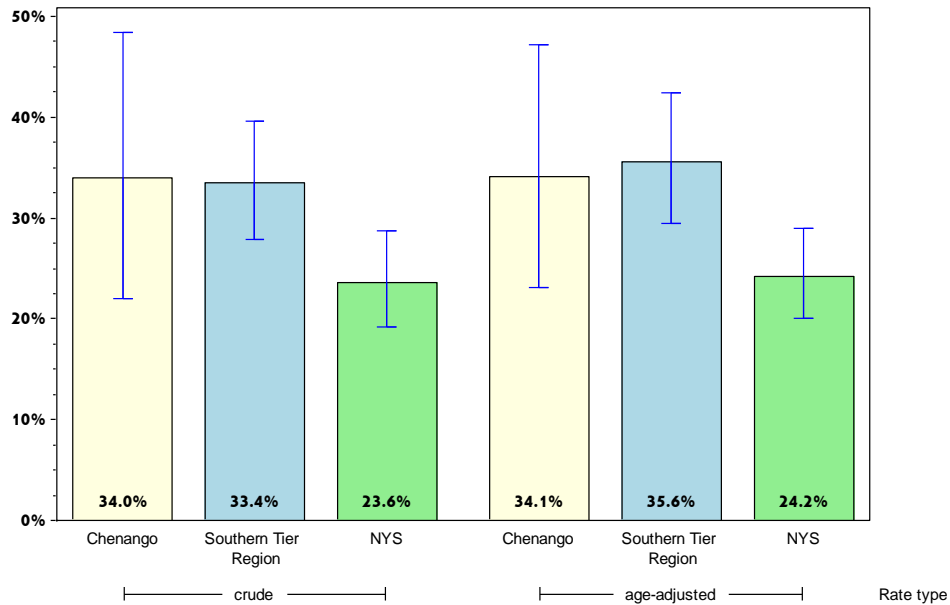
# Rates with <10 in the numerator or <50 in the denominator are suppressed.

<sup>^</sup> Highly variable rate (confidence interval with a half-width greater than 10).

# Chenango

## Prevent Chronic Diseases

Percentage of adults with annual household income less than \$25,000 who are current smokers



	Chenango County			Southern Tier		
	Est. # of Adults	Percent	95% CI	Est. # of Adults	Percent	95% CI
<b>Total</b>	3,970	34.0 <sup>^</sup>	(22.0-48.4)	33,082	33.4	(27.8-39.6)
<b>Age</b>		#			#	
18-24		#			#	
25-34		#		8,325	38.6 <sup>^</sup>	(22.8-57.1)
35-44		#		4,330	37.6 <sup>^</sup>	(21.9-56.6)
45-64		#		14,058	43.6	(35.1-52.4)
65+		#		2,371	9.7	(5.9-15.5)
<b>Race</b>						
White, NH	3,924	38.3 <sup>^</sup>	(25.9-52.4)	28,558	35.6	(29.9-41.7)
Black, NH		#			#	
Hispanic		#			#	
Other, NH		#			#	
<b>Sex</b>						
male	2,227	34.6 <sup>^</sup>	(17.4-57.0)	15,897	35.6	(27.7-44.3)
female	1,743	33.3 <sup>^</sup>	(19.9-50.0)	17,185	31.7	(24.1-40.3)
<b>Age-adjusted<sup>&amp;</sup></b>		34.1 <sup>^</sup>	(23.1-47.2)		35.6	(29.4-42.4)

& Percent is age-adjusted to the 2000 United States Population.

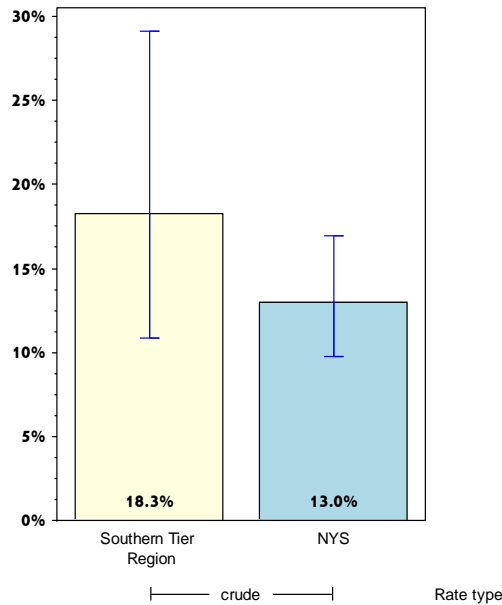
# Rates with <10 in the numerator or <50 in the denominator are suppressed.

<sup>^</sup> Highly variable rate (confidence interval with a half-width greater than 10).

# Chenango

## Prevent Chronic Diseases

### Percentage of adults aged 18-24 years who are current smokers



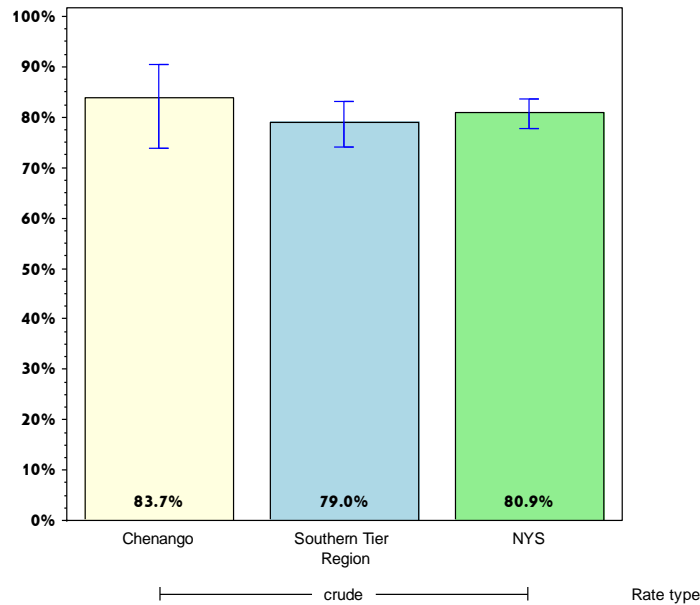
	Chenango County			Southern Tier		
	Est. # of Adults	Percent	95% CI	Est. # of Adults	Percent	95% CI
<b>Total</b>		#		9,973	18.3 <sup>^</sup>	(10.8-29.1)
<b>Age<sup>+</sup></b>						
18-24						
25-34						
35-44						
45-64						
65+						
<b>Race</b>						
White, NH		#		9,651	23.3 <sup>^</sup>	(14.1-36.0)
Black, NH		#			#	
Hispanic		#			#	
Other, NH		#			#	
<b>Sex</b>						
male		#		6,557	23.4 <sup>^</sup>	(12.3-40.0)
female		#			#	
<b>Age-adjusted<sup>+,&amp;</sup></b>						

& Percent is age-adjusted to the 2000 United States Population.  
 + Age-adjusted and age specific percent not generated for health indicators with age range limits.  
 # Rates with <10 in the numerator or <50 in the denominator are suppressed.  
 ^ Highly variable rate (confidence interval with a half-width greater than 10).

# Chenango

## Prevent Chronic Diseases

Percentage of women aged 50-74 years receiving breast cancer screening based on recent guidelines\*



### Chenango County

### Southern Tier

	Est. # of Adults	Percent	95% CI	Est. # of Adults	Percent	95% CI
<b>Total</b>	5,978	83.7	(73.9-90.4)	51,498	79.0	(74.1-83.2)
<b>Age<sup>+</sup></b>						
18-24						
25-34						
35-44						
45-64						
65+						
<b>Race</b>						
White, NH	5,322	82.1 <sup>^</sup>	(71.7-89.2)	45,195	78.4	(73.2-82.8)
Black, NH		#			#	
Hispanic		#			#	
Other, NH		#			#	
<b>Sex</b>						
male		#			#	
female	5,978	83.7	(73.9-90.4)	51,498	79.0	(74.1-83.2)
<b>Age-adjusted<sup>+,&amp;</sup></b>						

\* Mammogram within past 2 years.

& Percent is age-adjusted to the 2000 United States Population.

+ Age-adjusted and age specific percent not generated for health indicators with age range limits.

# Rates with <10 in the numerator or <50 in the denominator are suppressed.

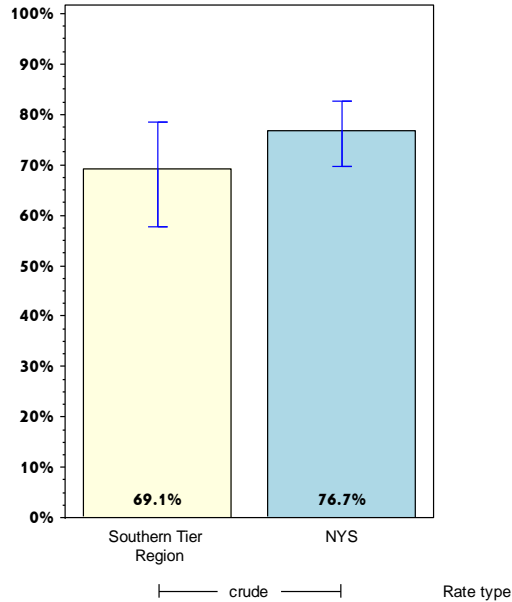
<sup>^</sup> Highly variable rate (confidence interval with a half-width greater than 10).



# Chenango

## Prevent Chronic Diseases

Percentage of women aged 50-74 years with annual household income of less than \$25,000 receiving breast cancer screening based on recent guidelines\*



	Chenango County			Southern Tier		
	Est. # of Adults	Percent	95% CI	Est. # of Adults	Percent	95% CI
<b>Total</b>		#		12,012	69.1 <sup>^</sup>	(57.8-78.5)
<b>Age<sup>+</sup></b>						
18-24						
25-34						
35-44						
45-64						
65+						
<b>Race</b>						
White, NH		#		10,516	68.8 <sup>^</sup>	(56.7-78.7)
Black, NH		#			#	
Hispanic		#			#	
Other, NH		#			#	
<b>Sex</b>						
male		#			#	
female		#		12,012	69.1 <sup>^</sup>	(57.8-78.5)
<b>Age-adjusted<sup>+,&amp;</sup></b>						

\* Mammogram within past 2 years.

& Percent is age-adjusted to the 2000 United States Population.

+ Age-adjusted and age specific percent not generated for health indicators with age range limits.

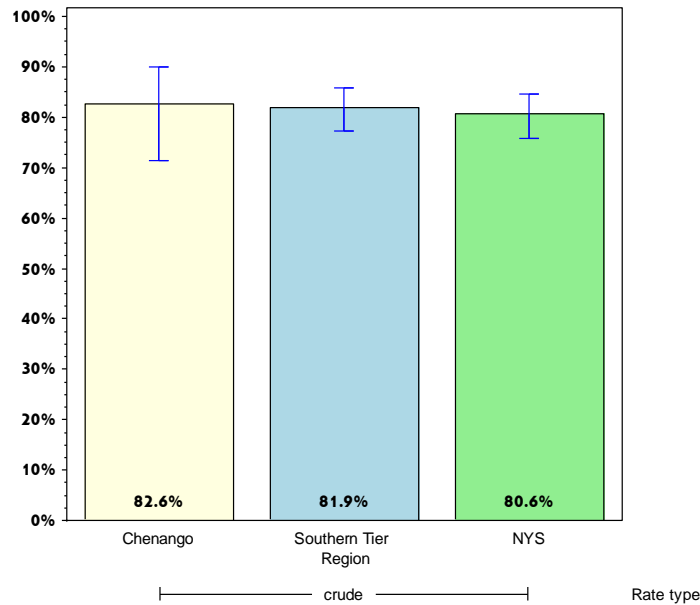
# Rates with <10 in the numerator or <50 in the denominator are suppressed.

<sup>^</sup> Highly variable rate (confidence interval with a half-width greater than 10).

# Chenango

## Prevent Chronic Diseases

Percentage of women aged 21-65 years receiving cervical cancer screening based on recent guidelines\*



### Chenango County

### Southern Tier

	Est. # of Adults	Percent	95% CI	Est. # of Adults	Percent	95% CI
<b>Total</b>	11,867	82.6 <sup>^</sup>	(71.4-90.0)	100,500	81.9	(77.2-85.8)
<b>Age<sup>+</sup></b>						
18-24						
25-34						
35-44						
45-64						
65+						
<b>Race</b>						
White, NH	10,424	80.7 <sup>^</sup>	(68.6-88.8)	84,356	81.9	(77.5-85.6)
Black, NH		#			#	
Hispanic		#			#	
Other, NH		#			#	
<b>Sex</b>						
male		#			#	
female	11,867	82.6 <sup>^</sup>	(71.4-90.0)	100,500	81.9	(77.2-85.8)
<b>Age-adjusted<sup>+,&amp;</sup></b>						

\* Pap test within past 3 years.

& Percent is age-adjusted to the 2000 United States Population.

+ Age-adjusted and age specific percent not generated for health indicators with age range limits.

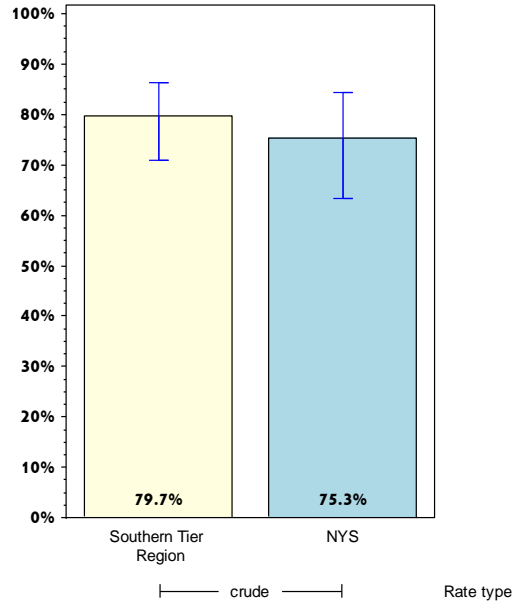
# Rates with <10 in the numerator or <50 in the denominator are suppressed.

<sup>^</sup> Highly variable rate (confidence interval with a half-width greater than 10).

# Chenango

## Prevent Chronic Diseases

Percentage of women aged 21-65 years with annual household income of less than \$25,000 receiving cervical cancer screening based on recent guidelines\*



### Chenango County

### Southern Tier

	Est. # of Adults	Percent	95% CI	Est. # of Adults	Percent	95% CI
<b>Total</b>		#		29,790	79.7	(71.0-86.4)
<b>Age<sup>+</sup></b>						
18-24						
25-34						
35-44						
45-64						
65+						
<b>Race</b>						
White, NH		#		21,880	75.4	(66.0-82.8)
Black, NH		#			#	
Hispanic		#			#	
Other, NH		#			#	
<b>Sex</b>						
male		#			#	
female		#		29,790	79.7	(71.0-86.4)
<b>Age-adjusted<sup>+,&amp;</sup></b>						

\* Pap test within past 3 years.

& Percent is age-adjusted to the 2000 United States Population.

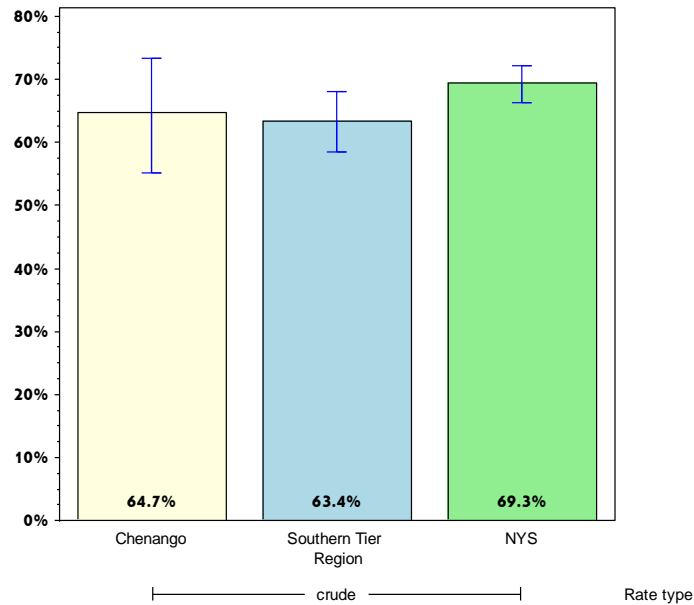
+ Age-adjusted and age specific percent not generated for health indicators with age range limits.

# Rates with <10 in the numerator or <50 in the denominator are suppressed.

# Chenango

## Prevent Chronic Diseases

Percentage of adults aged 50-75 years receiving colorectal cancer screening based on recent guidelines\*



### Chenango County

### Southern Tier

	Est. # of Adults	Percent	95% CI	Est. # of Adults	Percent	95% CI
<b>Total</b>	10,429	64.7	(55.2-73.2)	82,061	63.4	(58.5-68.1)
<b>Age<sup>+</sup></b>						
18-24						
25-34						
35-44						
45-64						
65+						
<b>Race</b>						
White, NH	9,820	66.0	(56.6-74.2)	72,849	65.4	(61.3-69.3)
Black, NH		#			#	
Hispanic		#			#	
Other, NH		#			#	
<b>Sex</b>						
male	5,325	61.1 <sup>^</sup>	(47.3-73.4)	38,092	61.3	(53.2-68.7)
female	5,104	69.0 <sup>^</sup>	(55.6-79.9)	43,969	65.4	(59.3-71.0)
<b>Age-adjusted<sup>+,&amp;</sup></b>						

\* Blood stool test within 1 year, or sigmoidoscopy within 5 years with blood stool test within 3 years, or colonoscopy within 10 years.

& Percent is age-adjusted to the 2000 United States Population.

+ Age-adjusted and age specific percent not generated for health indicators with age range limits.

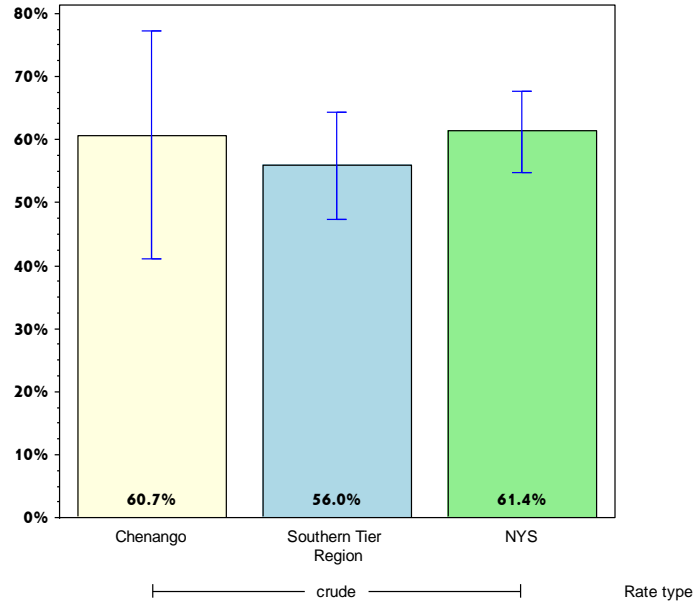
# Rates with <10 in the numerator or <50 in the denominator are suppressed.

<sup>^</sup> Highly variable rate (confidence interval with a half-width greater than 10).

# Chenango

## Prevent Chronic Diseases

Percentage of adults aged 50-75 years with annual household income less than \$25,000 receiving colorectal cancer screening based on recent guidelines\*



	Chenango County			Southern Tier		
	Est. # of Adults	Percent	95% CI	Est. # of Adults	Percent	95% CI
<b>Total Age<sup>+</sup></b>	2,363	60.7 <sup>^</sup>	(41.2-77.3)	19,541	56.0	(47.4-64.3)
18-24						
25-34						
35-44						
45-64						
65+						
<b>Race</b>						
White, NH	2,317	60.2 <sup>^</sup>	(40.6-77.0)	16,747	55.0	(46.2-63.4)
Black, NH		#			#	
Hispanic		#			#	
Other, NH		#			#	
<b>Sex</b>						
male		#		9,923	60.7 <sup>^</sup>	(49.2-71.2)
female		#		9,618	51.9 <sup>^</sup>	(39.9-63.6)
<b>Age-adjusted<sup>+,&amp;</sup></b>						

\* Blood stool test within 1 year, or sigmoidoscopy within 5 years with blood stool test within 3 years, or colonoscopy within 10 years.

& Percent is age-adjusted to the 2000 United States Population.

+ Age-adjusted and age specific percent not generated for health indicators with age range limits.

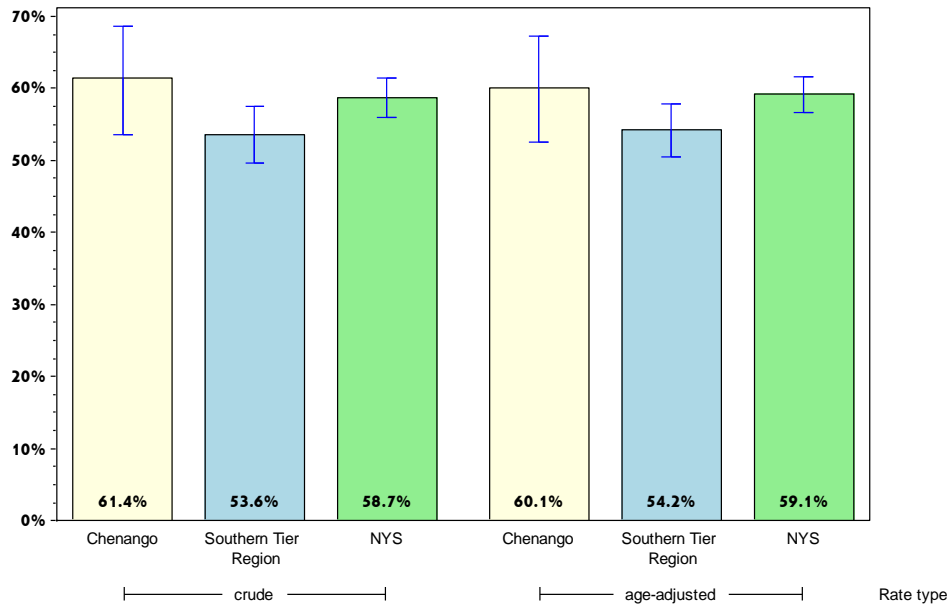
# Rates with <10 in the numerator or <50 in the denominator are suppressed.

<sup>^</sup> Highly variable rate (confidence interval with a half-width greater than 10).

# Chenango

## Prevent Chronic Diseases

Percentage of adults who had a test for high blood sugar or diabetes within the past three years



### Chenango County

### Southern Tier

	Est. # of Adults	Percent	95% CI	Est. # of Adults	Percent	95% CI
<b>Total</b>	19,340	61.4	(53.5-68.7)	164,536	53.6	(49.7-57.5)
<b>Age</b>		#				
18-24		#		13,960	28.0 <sup>^</sup>	(18.0-40.8)
25-34		#		25,224	46.6 <sup>^</sup>	(36.7-56.7)
35-44		#		24,844	54.5	(44.6-64.1)
45-64	6,601	58.3 <sup>^</sup>	(46.4-69.2)	60,606	60.3	(54.6-65.7)
65+	4,266	67.4 <sup>^</sup>	(54.3-78.3)	37,837	71.0	(65.6-75.8)
<b>Race</b>						
White, NH	17,101	60.5	(52.7-67.8)	142,752	55.3	(51.7-59.0)
Black, NH		#			#	
Hispanic		#			#	
Other, NH		#		8,459	39.2 <sup>^</sup>	(23.2-57.8)
<b>Sex</b>						
male	10,258	64.8 <sup>^</sup>	(52.6-75.3)	78,714	51.4	(46.1-56.7)
female	9,082	57.9 <sup>^</sup>	(47.8-67.4)	85,822	55.8	(49.9-61.6)
<b>Age-adjusted<sup>&amp;</sup></b>		60.1	(52.5-67.3)		54.2	(50.4-57.9)

& Percent is age-adjusted to the 2000 United States Population.

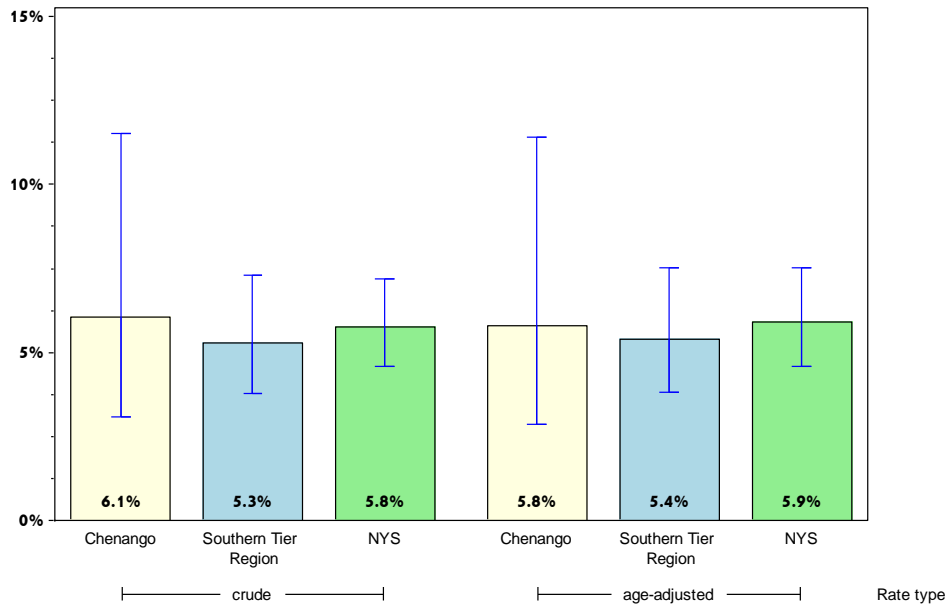
# Rates with <10 in the numerator or <50 in the denominator are suppressed.

<sup>^</sup> Highly variable rate (confidence interval with a half-width greater than 10).

# Chenango

## Prevent Chronic Diseases

### Percentage of adults with physician-diagnosed prediabetes



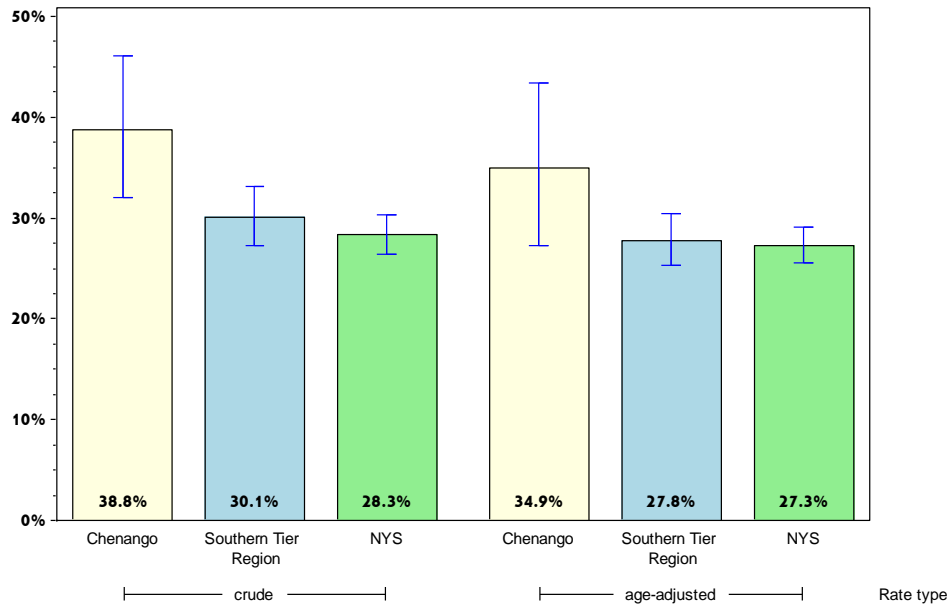
	Chenango County			Southern Tier		
	Est. # of Adults	Percent	95% CI	Est. # of Adults	Percent	95% CI
<b>Total</b>	1,996	6.1	(3.1-11.5)	16,763	5.3	(3.8-7.3)
<b>Age</b>		#			#	
18-24		#			#	
25-34		#			#	
35-44		#			#	
45-64		#		6,771	6.6	(4.8-9.1)
65+	828	12.1 <sup>^</sup>	(4.3-29.6)	3,770	6.8	(4.5-10.1)
<b>Race</b>						
White, NH	1,554	5.2	(2.7-10.0)	15,289	5.7	(4.0-8.0)
Black, NH		#			#	
Hispanic		#			#	
Other, NH		#			#	
<b>Sex</b>						
male	1,355	8.5 <sup>^</sup>	(3.3-20.2)	8,956	5.7	(3.3-9.7)
female	641	3.8	(2.1-6.7)	7,807	4.8	(3.4-6.7)
<b>Age-adjusted<sup>&amp;</sup></b>		5.8	(2.9-11.4)		5.4	(3.8-7.5)

& Percent is age-adjusted to the 2000 United States Population.  
 # Rates with <10 in the numerator or <50 in the denominator are suppressed.  
 ^ Highly variable rate (confidence interval with a half-width greater than 10).

# Chenango

## Prevent Chronic Diseases

### Percentage of adults with physician-diagnosed high blood pressure



	Chenango County			Southern Tier		
	Est. # of Adults	Percent	95% CI	Est. # of Adults	Percent	95% CI
<b>Total</b>	14,939	38.8	(32.0-46.1)	108,205	30.1	(27.2-33.1)
<b>Age</b>		#				
18-24		#		5,198	9.2	(4.7-17.4)
25-34		#		8,421	13.8	(8.3-22.1)
35-44		#		6,819	14.3	(9.4-21.3)
45-64	5,540	39.2	(30.1-49.2)	41,371	35.0	(30.6-39.7)
65+	5,460	63.1 <sup>^</sup>	(52.5-72.5)	44,299	61.4	(56.5-66.1)
<b>Race</b>						
White, NH	12,545	36.1	(29.9-42.8)	93,946	31.4	(28.6-34.3)
Black, NH		#			#	
Hispanic		#			#	
Other, NH		#		7,589	27.8 <sup>^</sup>	(15.4-44.8)
<b>Sex</b>						
male	8,566	45.3 <sup>^</sup>	(34.5-56.7)	57,850	33.0	(28.8-37.5)
female	6,373	32.5	(24.9-41.1)	50,354	27.3	(23.7-31.3)
<b>Age-adjusted<sup>&amp;</sup></b>		34.9	(27.2-43.5)		27.8	(25.3-30.4)

& Percent is age-adjusted to the 2000 United States Population.

# Rates with <10 in the numerator or <50 in the denominator are suppressed.

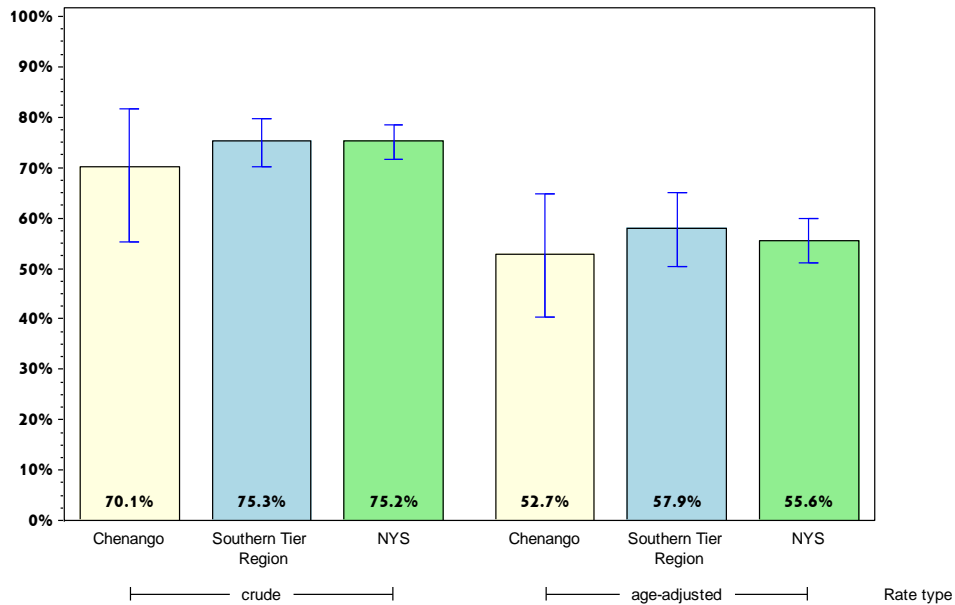
<sup>^</sup> Highly variable rate (confidence interval with a half-width greater than 10).



# Chenango

## Prevent Chronic Diseases

### Percentage of adults with diagnosed high blood pressure taking high blood pressure medication



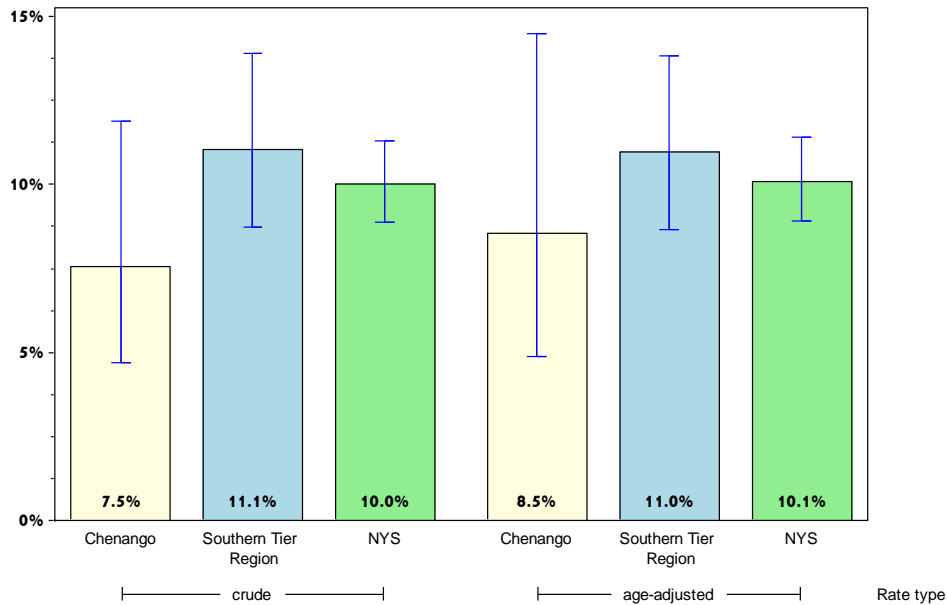
	Chenango County			Southern Tier		
	Est. # of Adults	Percent	95% CI	Est. # of Adults	Percent	95% CI
<b>Total</b>	10,465	70.1 <sup>^</sup>	(55.2-81.6)	81,095	75.3	(70.3-79.7)
<b>Age</b>		#			#	
18-24		#			#	
25-34		#			#	
35-44		#			#	
45-64	4,667	84.2 <sup>^</sup>	(70.9-92.1)	32,070	77.5	(70.3-83.4)
65+	4,756	87.1 <sup>^</sup>	(69.6-95.2)	40,246	91.8	(88.4-94.3)
<b>Race</b>						
White, NH	9,451	75.3 <sup>^</sup>	(62.9-84.6)	69,969	74.9	(69.7-79.4)
Black, NH		#			#	
Hispanic		#			#	
Other, NH		#			#	
<b>Sex</b>						
male	5,561	64.9 <sup>^</sup>	(43.7-81.5)	38,709	67.5	(59.6-74.5)
female	4,904	76.9 <sup>^</sup>	(58.4-88.8)	42,386	84.2	(78.8-88.4)
<b>Age-adjusted<sup>&amp;</sup></b>		52.7 <sup>^</sup>	(40.4-64.7)		57.9	(50.4-65.1)

& Percent is age-adjusted to the 2000 United States Population.  
 # Rates with <10 in the numerator or <50 in the denominator are suppressed.  
 ^ Highly variable rate (confidence interval with a half-width greater than 10).

# Chenango

## Prevent Chronic Diseases

### Percentage of adults with current asthma\*



#### Chenango County

#### Southern Tier

	Est. # of Adults	Percent	95% CI	Est. # of Adults	Percent	95% CI
<b>Total</b>	2,942	7.5	(4.7-11.9)	39,362	11.1	(8.7-13.9)
<b>Age</b>						
18-24	#	#		7,986	15.4	(9.2-24.5)
25-34	#	#		9,891	16.2 <sup>^</sup>	(8.1-29.8)
35-44	#	#		3,554	7.5	(4.4-12.4)
45-64	933	6.6	(3.7-11.5)	11,753	9.9	(7.7-12.8)
65+	#	#		6,076	8.4	(4.9-13.8)
<b>Race</b>						
White, NH	2,663	7.6	(4.6-12.3)	28,448	9.5	(7.8-11.5)
Black, NH	#	#		#	#	
Hispanic	#	#		#	#	
Other, NH	#	#		3,373	12.4 <sup>^</sup>	(4.7-28.7)
<b>Sex</b>						
male	1,128	5.8	(2.4-13.5)	14,033	7.9	(5.9-10.6)
female	1,813	9.2	(5.4-15.3)	25,329	14.1	(10.2-19.1)
<b>Age-adjusted<sup>&amp;</sup></b>		8.5	(4.9-14.5)		11.0	(8.7-13.8)

\* Physician diagnosed asthma.

& Percent is age-adjusted to the 2000 United States Population.

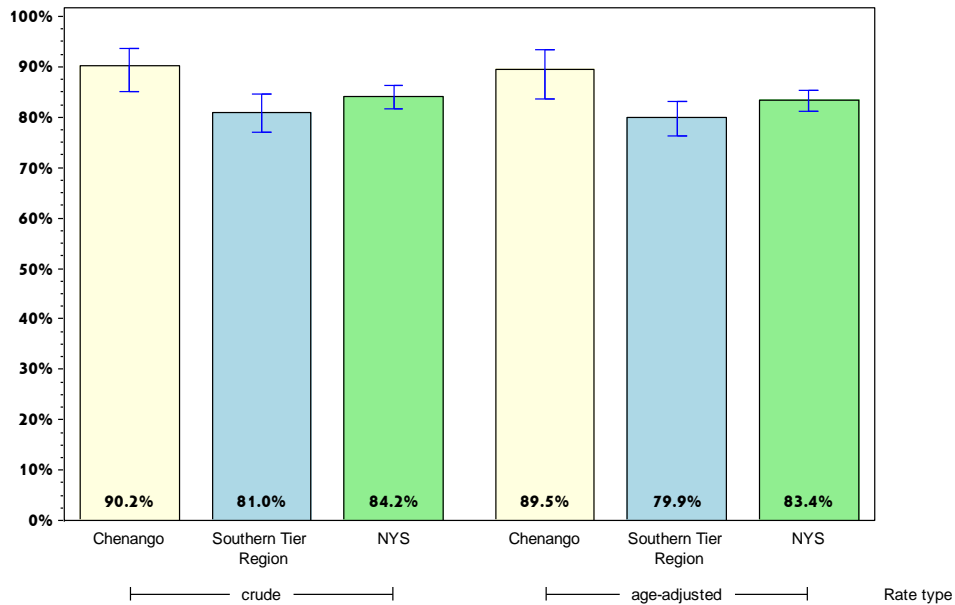
# Rates with <10 in the numerator or <50 in the denominator are suppressed.

<sup>^</sup> Highly variable rate (confidence interval with a half-width greater than 10).

# Chenango

## Prevent Chronic Diseases

### Percent of adults with cholesterol checked\*



#### Chenango County

#### Southern Tier

	Est. # of Adults	Percent	95% CI	Est. # of Adults	Percent	95% CI
<b>Total</b>	34,498	90.2	(85.1-93.6)	280,906	81.0	(76.9-84.5)
<b>Age</b>						
18-24	#	#		25,093	50.3 <sup>^</sup>	(36.0-64.5)
25-34	#	#		37,573	65.7 <sup>^</sup>	(53.6-76.1)
35-44	#	#		36,981	79.8	(70.1-87.0)
45-64	12,843	91.5	(82.8-96.0)	107,406	91.5	(88.6-93.6)
65+	8,516	96.1 <sup>^</sup>	(84.9-99.1)	69,502	97.5	(95.6-98.6)
<b>Race</b>						
White, NH	30,660	89.3	(83.8-93.1)	238,055	82.8	(79.7-85.6)
Black, NH	#	#		#	#	
Hispanic	#	#		#	#	
Other, NH	#	#		21,553	80.6 <sup>^</sup>	(64.6-90.4)
<b>Sex</b>						
male	17,067	88.5	(79.5-93.8)	138,828	81.3	(77.1-84.9)
female	17,431	91.9	(85.8-95.5)	142,078	80.7	(73.5-86.3)
<b>Age-adjusted<sup>&amp;</sup></b>		89.5	(83.7-93.4)		79.9	(76.3-83.2)

\* As diagnosed by a health professional.

& Percent is age-adjusted to the 2000 United States Population.

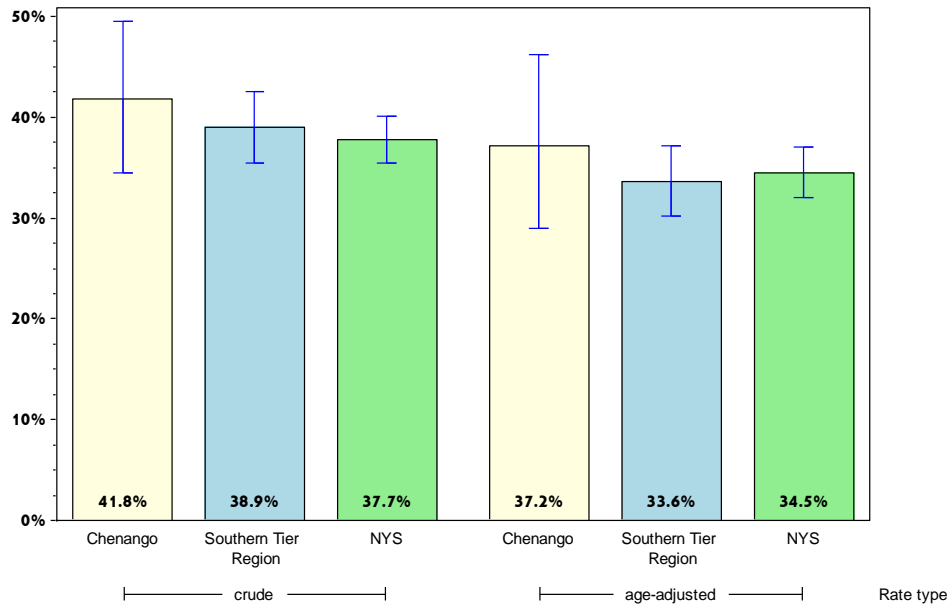
# Rates with <10 in the numerator or <50 in the denominator are suppressed.

<sup>^</sup> Highly variable rate (confidence interval with a half-width greater than 10).

# Chenango

## Prevent Chronic Diseases

### Percentage of adults 18 years and older with elevated cholesterol\*



	Chenango County			Southern Tier		
	Est. # of Adults	Percent	95% CI	Est. # of Adults	Percent	95% CI
<b>Total</b>	14,324	41.8	(34.4-49.6)	107,760	38.9	(35.5-42.5)
<b>Age</b>		#			#	
18-24		#			#	
25-34		#		8,162	21.9 <sup>^</sup>	(11.8-36.9)
35-44		#		9,810	26.7	(18.9-36.3)
45-64	6,455	50.3 <sup>^</sup>	(39.6-60.9)	49,298	46.7	(41.4-52.2)
65+	4,622	54.5 <sup>^</sup>	(43.4-65.2)	37,715	55.7	(50.5-60.7)
<b>Race</b>						
White, NH	11,874	39.0	(32.4-46.0)	89,873	38.3	(35.0-41.7)
Black, NH		#			#	
Hispanic		#			#	
Other, NH		#		11,862	56.1 <sup>^</sup>	(36.5-74.0)
<b>Sex</b>						
male	8,723	51.1 <sup>^</sup>	(39.6-62.5)	56,113	40.9	(35.6-46.5)
female	5,601	32.6	(24.2-42.2)	51,646	37.0	(32.7-41.6)
<b>Age-adjusted<sup>&amp;</sup></b>		37.2	(28.9-46.2)		33.6	(30.1-37.2)

\* As diagnosed by a health professional.

& Percent is age-adjusted to the 2000 United States Population.

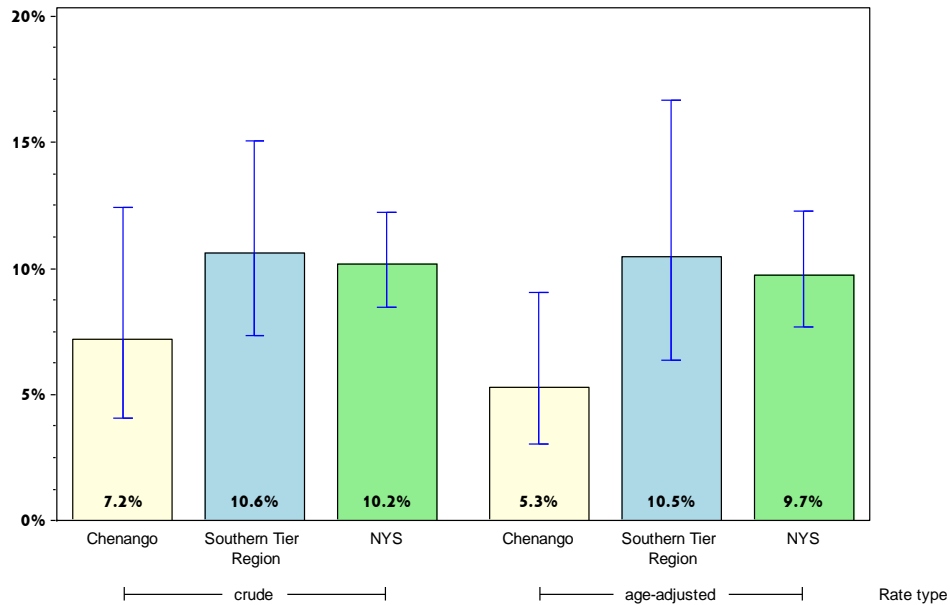
# Rates with <10 in the numerator or <50 in the denominator are suppressed.

<sup>^</sup> Highly variable rate (confidence interval with a half-width greater than 10).

# Chenango

## Prevent Chronic Diseases

Percentage of adults who have taken a course or class to learn how to manage their chronic disease or condition\*



### Chenango County

### Southern Tier

	Est. # of Adults	Percent	95% CI	Est. # of Adults	Percent	95% CI
<b>Total</b>	1,544	7.2	(4.0-12.4)	20,040	10.6	(7.3-15.1)
<b>Age</b>		#			#	
18-24		#			#	
25-34		#			#	
35-44		#			#	
45-64	1,167	14.2 <sup>^</sup>	(7.1-26.4)	6,755	9.8	(7.3-13.0)
65+	377	6.0	(3.0-11.8)	6,303	10.7	(7.6-14.9)
<b>Race</b>						
White, NH	1,095	5.8	(3.3-9.7)	14,247	9.0	(7.2-11.2)
Black, NH		#			#	
Hispanic		#			#	
Other, NH		#			#	
<b>Sex</b>						
male	684	6.0	(2.7-12.9)	6,930	7.9	(5.4-11.5)
female	859	8.5	(3.8-17.9)	13,110	12.9	(7.6-20.9)
<b>Age-adjusted<sup>&amp;</sup></b>		5.3	(3.0-9.1)		10.5	(6.4-16.7)

\* Courses for high blood pressure, arthritis, or diabetes.

& Percent is age-adjusted to the 2000 United States Population.

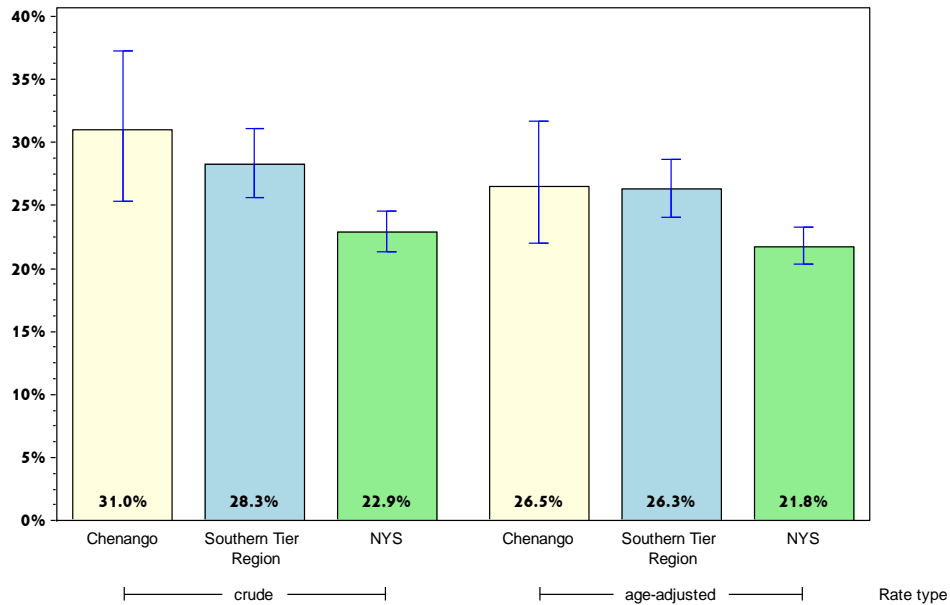
# Rates with <10 in the numerator or <50 in the denominator are suppressed.

<sup>^</sup> Highly variable rate (confidence interval with a half-width greater than 10).

# Chenango

## Prevent Chronic Diseases

### Percentage of adults with arthritis\*



#### Chenango County

#### Southern Tier

	Est. # of Adults	Percent	95% CI	Est. # of Adults	Percent	95% CI
<b>Total</b>	12,105	31.0	(25.4-37.3)	102,167	28.3	(25.6-31.1)
<b>Age</b>		#			#	
18-24		#			#	
25-34		#		5,390	8.9	(5.4-14.2)
35-44		#		7,770	16.4	(11.2-23.3)
45-64	5,294	37.5 <sup>^</sup>	(28.4-47.5)	44,194	37.1	(32.6-41.8)
65+	4,760	53.6 <sup>^</sup>	(42.5-64.4)	40,660	56.0	(50.9-60.9)
<b>Race</b>						
White, NH	11,089	31.6	(26.0-37.9)	91,598	30.4	(27.7-33.3)
Black, NH		#			#	
Hispanic		#			#	
Other, NH		#		5,619	20.6 <sup>^</sup>	(10.7-35.9)
<b>Sex</b>						
male	5,758	29.8	(21.5-39.6)	38,769	21.9	(18.9-25.3)
female	6,348	32.2	(25.0-40.4)	63,397	34.3	(30.0-39.0)
<b>Age-adjusted<sup>&amp;</sup></b>		26.5	(22.0-31.6)		26.3	(24.1-28.6)

\* Includes rheumatoid arthritis, gout, lupus, or fibromyalgia.

& Percent is age-adjusted to the 2000 United States Population.

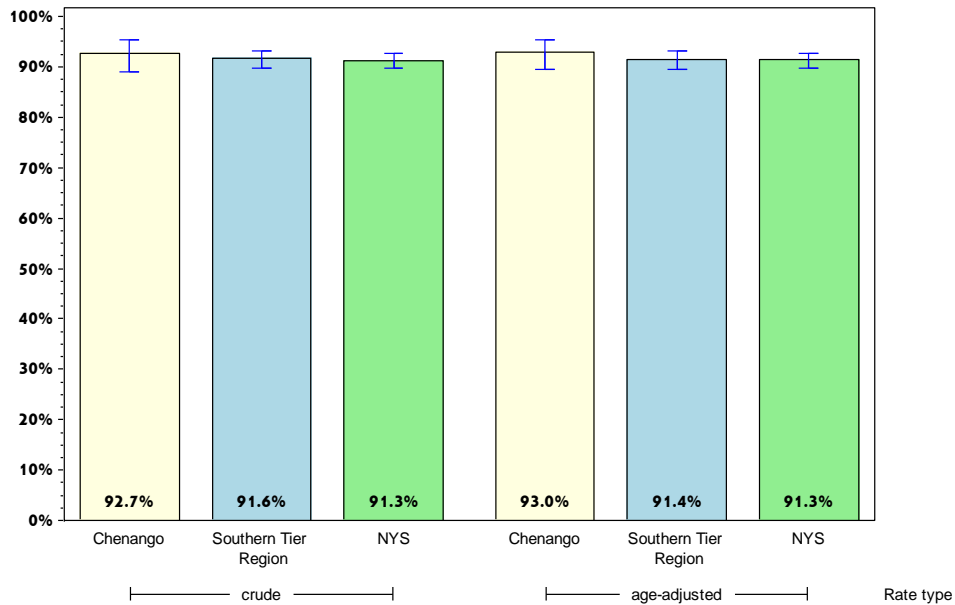
# Rates with <10 in the numerator or <50 in the denominator are suppressed.

<sup>^</sup> Highly variable rate (confidence interval with a half-width greater than 10).

# Chenango

## Promote a Healthy and Safe Environment

### Percentage of adults who consider their neighborhood suitable for walking and physical activity



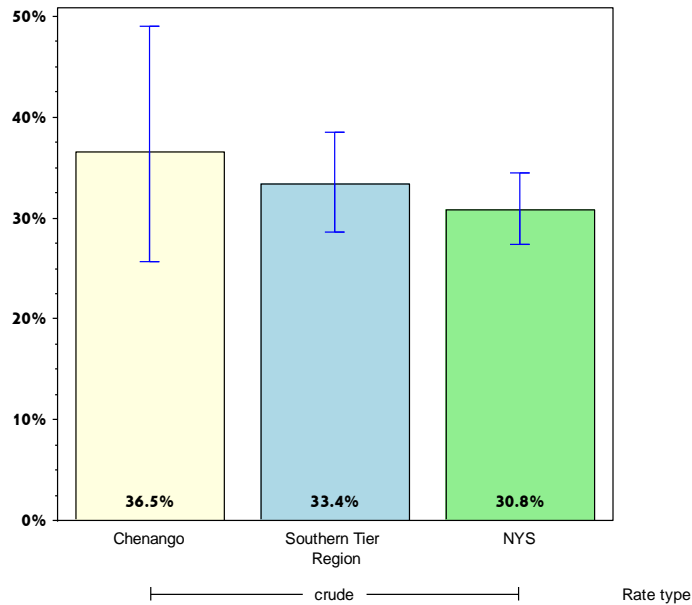
	Chenango County			Southern Tier		
	Est. # of Adults	Percent	95% CI	Est. # of Adults	Percent	95% CI
<b>Total</b>	34,228	92.7	(88.9-95.2)	315,627	91.6	(89.7-93.2)
<b>Age</b>		#				
18-24		#		47,540	89.3	(79.4-94.7)
25-34		#		53,444	91.4	(85.0-95.2)
35-44		#		40,753	90.0	(84.4-93.7)
45-64	12,428	93.6	(85.3-97.4)	106,162	93.3	(90.2-95.4)
65+	7,180	87.8 <sup>^</sup>	(77.5-93.7)	63,978	91.6	(88.9-93.7)
<b>Race</b>						
White, NH	30,745	93.3	(89.8-95.7)	261,499	90.9	(88.7-92.7)
Black, NH		#			#	
Hispanic		#			#	
Other, NH		#		23,022	95.9	(89.7-98.4)
<b>Sex</b>						
male	17,361	94.8	(89.2-97.6)	156,230	92.9	(89.8-95.1)
female	16,867	90.5	(84.7-94.3)	159,397	90.4	(87.5-92.7)
<b>Age-adjusted<sup>&amp;</sup></b>		93.0	(89.4-95.4)		91.4	(89.4-93.1)

& Percent is age-adjusted to the 2000 United States Population.  
 # Rates with <10 in the numerator or <50 in the denominator are suppressed.  
 ^ Highly variable rate (confidence interval with a half-width greater than 10).

# Chenango

## Promote a Health and Safe Environment

### Percentage of adults aged 65+ years with at least one fall in the past 12 months



#### Chenango County

#### Southern Tier

	Est. # of Adults	Percent	95% CI	Est. # of Adults	Percent	95% CI
<b>Total</b>	3,011	36.5 <sup>^</sup>	(25.6-49.0)	23,488	33.4	(28.7-38.5)
<b>Age<sup>+</sup></b>						
18-24						
25-34						
35-44						
45-64						
65+						
<b>Race</b>						
White, NH	2,569	34.7 <sup>^</sup>	(25.2-45.6)	20,224	32.3	(28.2-36.8)
Black, NH		#			#	
Hispanic		#			#	
Other, NH		#			#	
<b>Sex</b>						
male	1,555	36.0 <sup>^</sup>	(19.2-57.1)	10,838	32.5	(25.0-40.9)
female	1,456	37.1 <sup>^</sup>	(25.8-50.1)	12,650	34.2	(28.3-40.6)
<b>Age-adjusted<sup>+,&amp;</sup></b>						

& Percent is age-adjusted to the 2000 United States Population.

+ Age-adjusted and age specific percent not generated for health indicators with age range limits.

# Rates with <10 in the numerator or <50 in the denominator are suppressed.

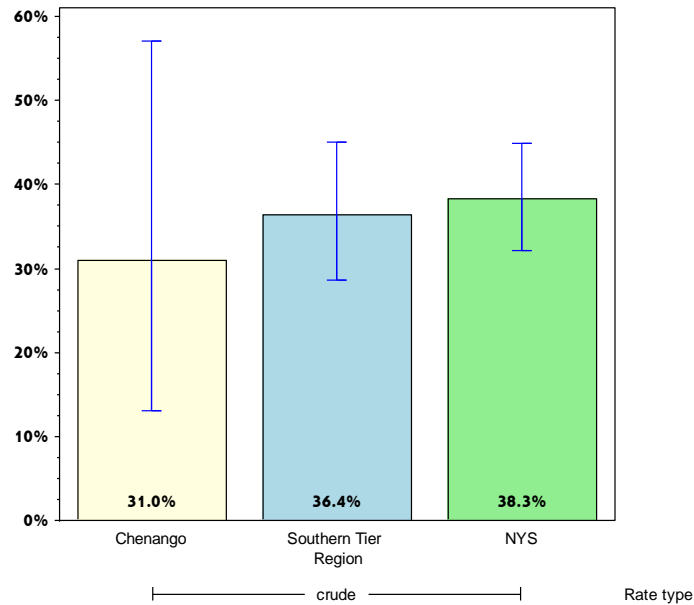
<sup>^</sup> Highly variable rate (confidence interval with a half-width greater than 10).



# Chenango

## Promote a Health and Safe Environment

Among adults aged 65+ years with at least one fall in the past 12 months, percent that resulted in injury\*



### Chenango County

### Southern Tier

	Est. # of Adults	Percent	95% CI	Est. # of Adults	Percent	95% CI
<b>Total</b>	932	31.0 <sup>^</sup>	(13.1-57.1)	8,522	36.4	(28.5-45.0)
<b>Age<sup>+</sup></b>						
18-24						
25-34						
35-44						
45-64						
65+						
<b>Race</b>						
White, NH		#		7,465	37.0	(29.7-45.0)
Black, NH		#			#	
Hispanic		#			#	
Other, NH		#			#	
<b>Sex</b>						
male		#		3,078	28.4 <sup>^</sup>	(17.1-43.3)
female		#		5,444	43.2	(34.0-52.9)
<b>Age-adjusted<sup>+,&amp;</sup></b>						

\* Falls that limited regular activities or lead to doctor visits.

& Percent is age-adjusted to the 2000 United States Population.

+ Age-adjusted and age specific percent not generated for health indicators with age range limits.

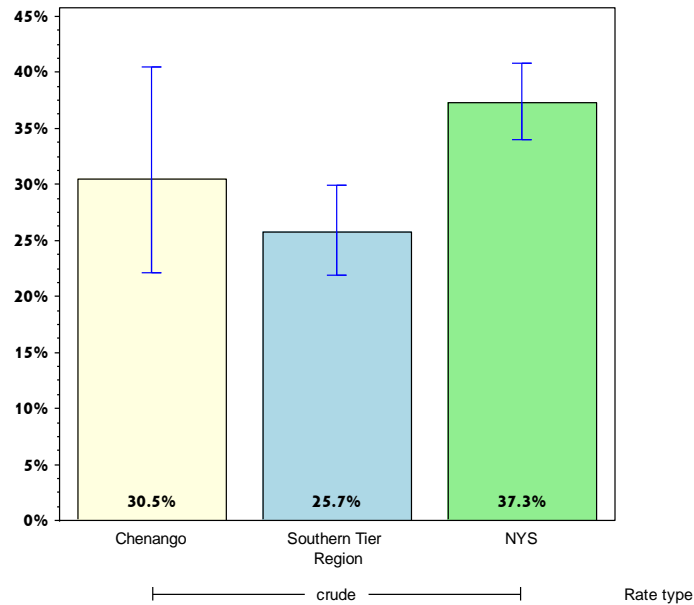
# Rates with <10 in the numerator or <50 in the denominator are suppressed.

<sup>^</sup> Highly variable rate (confidence interval with a half-width greater than 10).

# Chenango

## Prevent HIV/STDs, Vaccine Preventable Diseases and Healthcare-Associated Infections

### Percentage of adults aged 47-68 years reporting ever tested for Hepatitis C (HCV)



#### Chenango County

#### Southern Tier

	Est. # of Adults	Percent	95% CI	Est. # of Adults	Percent	95% CI
<b>Total</b>	3,829	30.5	(22.1-40.4)	28,278	25.7	(21.9-29.9)
<b>Age<sup>+</sup></b>						
18-24						
25-34						
35-44						
45-64						
65+						
<b>Race</b>						
White, NH	3,760	31.8 <sup>^</sup>	(23.1-42.0)	25,192	27.0	(23.1-31.2)
Black, NH		#			#	
Hispanic		#			#	
Other, NH		#			#	
<b>Sex</b>						
male	2,152	30.8 <sup>^</sup>	(19.4-45.2)	14,697	28.1	(22.3-34.8)
female	1,677	30.1 <sup>^</sup>	(18.7-44.6)	13,581	23.5	(18.7-29.0)
<b>Age-adjusted<sup>+,&amp;</sup></b>						

& Percent is age-adjusted to the 2000 United States Population.

+ Age-adjusted and age specific percent not generated for health indicators with age range limits.

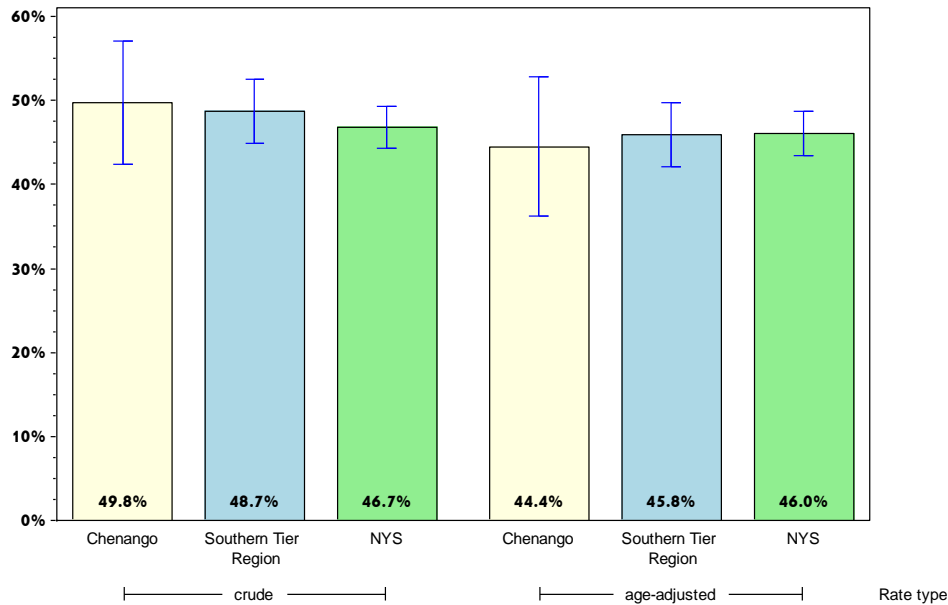
# Rates with <10 in the numerator or <50 in the denominator are suppressed.

<sup>^</sup> Highly variable rate (confidence interval with a half-width greater than 10).

# Chenango

## Prevent HIV/STDs, Vaccine Preventable Diseases and Healthcare-Associated Infections

### Percentage of adults aged 18+ years with flu immunization in the past year\*



#### Chenango County

#### Southern Tier

	Est. # of Adults	Percent	95% CI	Est. # of Adults	Percent	95% CI
<b>Total</b>	18,682	49.8	(42.4-57.1)	169,235	48.7	(44.9-52.4)
<b>Age</b>		#				
18-24		#		22,678	42.8 <sup>^</sup>	(28.8-58.0)
25-34		#		21,280	36.4 <sup>^</sup>	(25.5-48.8)
35-44		#		13,516	29.5	(22.3-37.9)
45-64	7,849	57.6 <sup>^</sup>	(46.9-67.5)	58,844	50.9	(45.9-55.9)
65+	5,989	71.4 <sup>^</sup>	(60.8-80.0)	49,932	70.4	(65.0-75.3)
<b>Race</b>						
White, NH	15,502	46.2	(39.3-53.3)	135,586	46.6	(43.2-50.1)
Black, NH		#			#	
Hispanic		#			#	
Other, NH		#		12,106	50.0 <sup>^</sup>	(32.3-67.7)
<b>Sex</b>						
male	9,074	48.6 <sup>^</sup>	(37.5-59.8)	76,549	45.2	(40.3-50.2)
female	9,608	50.9	(41.4-60.4)	92,686	52.0	(46.5-57.4)
<b>Age-adjusted<sup>&amp;</sup></b>		44.4	(36.3-52.8)		45.8	(42.1-49.7)

\* Includes flu shot or flu spray

& Percent is age-adjusted to the 2000 United States Population.

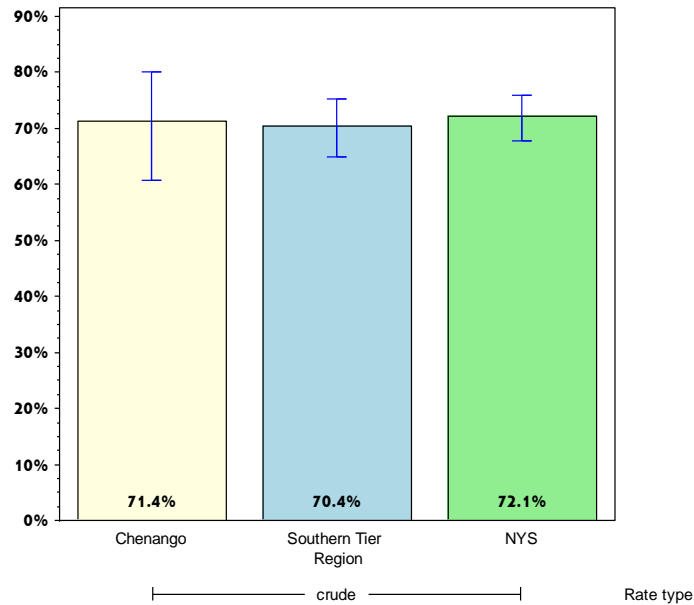
# Rates with <10 in the numerator or <50 in the denominator are suppressed.

<sup>^</sup> Highly variable rate (confidence interval with a half-width greater than 10).

# Chenango

## Prevent HIV/STDs, Vaccine Preventable Diseases and Healthcare-Associated Infections

### Percentage of adults aged 65+ years with flu immunization in the past year\*



#### Chenango County

#### Southern Tier

	Est. # of Adults	Percent	95% CI	Est. # of Adults	Percent	95% CI
<b>Total</b>	5,989	71.4 <sup>^</sup>	(60.8-80.0)	49,932	70.4	(65.0-75.3)
<b>Age<sup>+</sup></b>						
18-24						
25-34						
35-44						
45-64						
65+						
<b>Race</b>						
White, NH	5,153	68.2 <sup>^</sup>	(57.5-77.3)	45,116	71.5	(66.6-75.9)
Black, NH		#			#	
Hispanic		#			#	
Other, NH		#			#	
<b>Sex</b>						
male	3,108	69.5 <sup>^</sup>	(52.9-82.2)	22,538	66.9	(58.4-74.4)
female	2,881	73.5 <sup>^</sup>	(59.9-83.8)	27,394	73.6	(67.0-79.3)
<b>Age-adjusted<sup>+,&amp;</sup></b>						

\* Includes flu shot or flu spray

& Percent is age-adjusted to the 2000 United States Population.

+ Age-adjusted and age specific percent not generated for health indicators with age range limits.

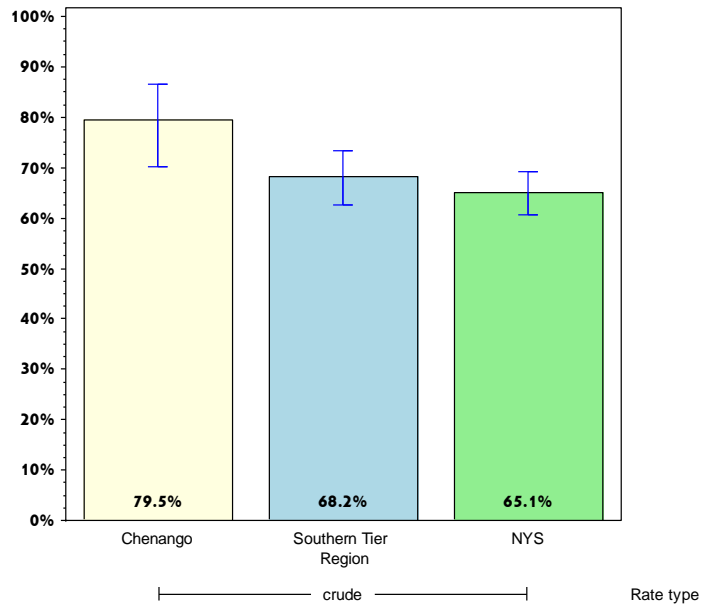
# Rates with <10 in the numerator or <50 in the denominator are suppressed.

<sup>^</sup> Highly variable rate (confidence interval with a half-width greater than 10).

# Chenango

## Prevent HIV/STDs, Vaccine Preventable Diseases and Healthcare-Associated Infections

### Percentage of adults aged 65+ years with pneumococcal immunization



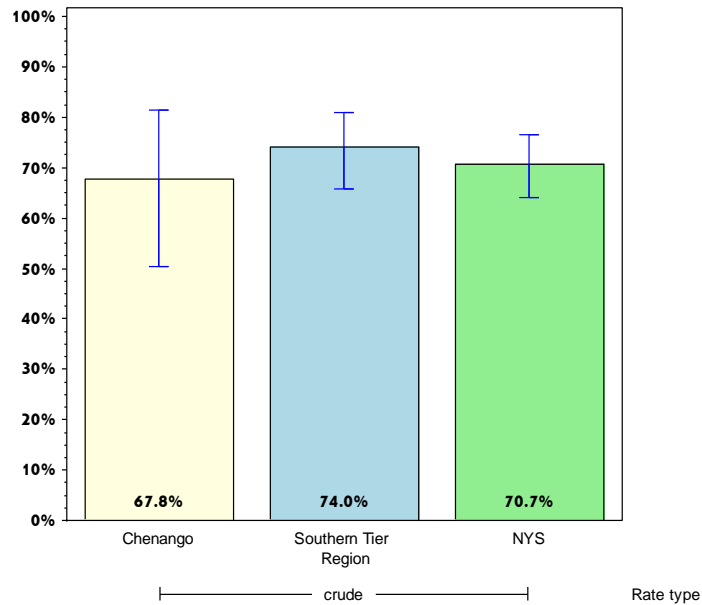
	Chenango County			Southern Tier		
	Est. # of Adults	Percent	95% CI	Est. # of Adults	Percent	95% CI
<b>Total Age<sup>+</sup></b>	6,614	79.5	(70.2-86.4)	46,831	68.2	(62.5-73.3)
18-24						
25-34						
35-44						
45-64						
65+						
<b>Race</b>						
White, NH	5,778	77.2	(67.5-84.6)	42,016	68.9	(63.7-73.6)
Black, NH		#			#	
Hispanic		#			#	
Other, NH		#			#	
<b>Sex</b>						
male	3,591	81.5 <sup>^</sup>	(67.9-90.2)	20,119	62.6	(54.0-70.5)
female	3,023	77.1 <sup>^</sup>	(63.6-86.7)	26,713	73.1	(66.0-79.1)
<b>Age-adjusted<sup>+,&amp;</sup></b>						

& Percent is age-adjusted to the 2000 United States Population.  
 + Age-adjusted and age specific percent not generated for health indicators with age range limits.  
 # Rates with <10 in the numerator or <50 in the denominator are suppressed.  
 ^ Highly variable rate (confidence interval with a half-width greater than 10).

# Chenango

## Promote Healthy Women, Infants, and Children

Percentage of women aged 18-44 years who had dental visit within the last year



### Chenango County

### Southern Tier

	Est. # of Adults	Percent	95% CI	Est. # of Adults	Percent	95% CI
<b>Total</b>	5,688	67.8 <sup>^</sup>	(50.3-81.4)	52,014	74.0	(65.7-80.9)
<b>Age<sup>+</sup></b>						
18-24						
25-34						
35-44						
45-64						
65+						
<b>Race</b>						
White, NH		#		41,836	72.1	(63.2-79.6)
Black, NH		#			#	
Hispanic		#			#	
Other, NH		#			#	
<b>Sex</b>						
male		#			#	
female	5,688	67.8 <sup>^</sup>	(50.3-81.4)	52,014	74.0	(65.7-80.9)
<b>Age-adjusted<sup>+,&amp;</sup></b>						

& Percent is age-adjusted to the 2000 United States Population.

+ Age-adjusted and age specific percent not generated for health indicators with age range limits.

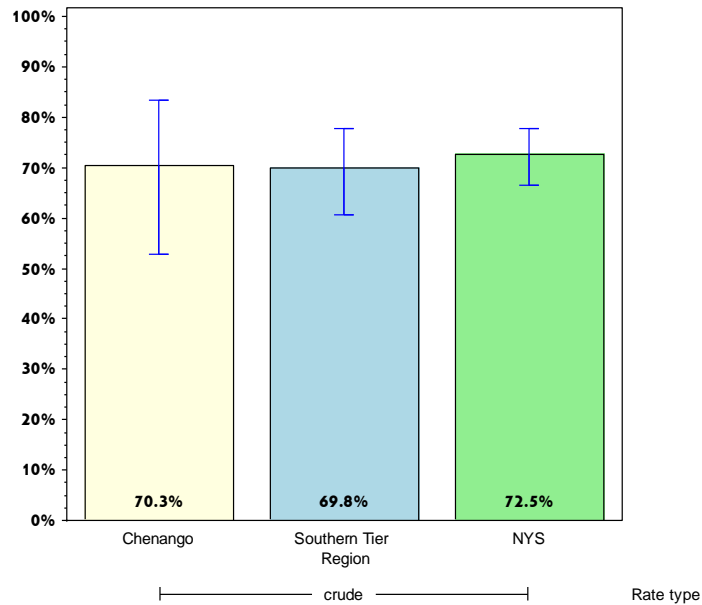
# Rates with <10 in the numerator or <50 in the denominator are suppressed.

<sup>^</sup> Highly variable rate (confidence interval with a half-width greater than 10).

# Chenango

## Promote Healthy Women, Infants, and Children

Women aged 18-44 years who saw a doctor for a routine checkup within the last year



### Chenango County

### Southern Tier

	Est. # of Adults	Percent	95% CI	Est. # of Adults	Percent	95% CI
<b>Total</b>	6,144	70.3 <sup>^</sup>	(52.9-83.4)	57,821	69.8	(60.6-77.7)
<b>Age<sup>+</sup></b>						
18-24						
25-34						
35-44						
45-64						
65+						
<b>Race</b>						
White, NH	5,650	69.7 <sup>^</sup>	(51.3-83.5)	42,375	69.2	(59.7-77.2)
Black, NH		#			#	
Hispanic		#			#	
Other, NH		#			#	
<b>Sex</b>						
male		#			#	
female	6,144	70.3 <sup>^</sup>	(52.9-83.4)	57,821	69.8	(60.6-77.7)
<b>Age-adjusted<sup>+,&amp;</sup></b>						

& Percent is age-adjusted to the 2000 United States Population.

+ Age-adjusted and age specific percent not generated for health indicators with age range limits.

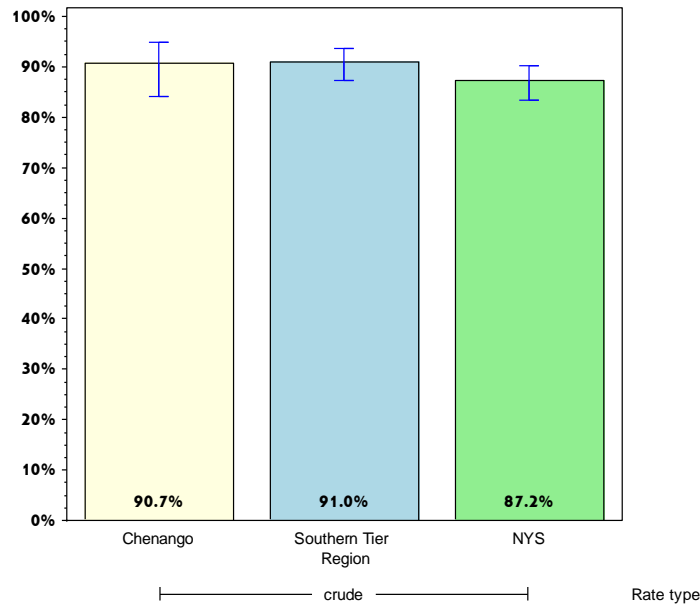
# Rates with <10 in the numerator or <50 in the denominator are suppressed.

<sup>^</sup> Highly variable rate (confidence interval with a half-width greater than 10).

# Chenango

## Promote Healthy Women, Infants, and Children

### Percentage of women aged 18-64 years with health care coverage



#### Chenango County

#### Southern Tier

	Est. # of Adults	Percent	95% CI	Est. # of Adults	Percent	95% CI
<b>Total</b>	13,776	90.7	(84.0-94.8)	125,536	91.0	(87.3-93.7)
<b>Age<sup>+</sup></b>						
18-24						
25-34						
35-44						
45-64						
65+						
<b>Race</b>						
White, NH	12,319	90.6	(83.5-94.9)	103,783	90.9	(87.0-93.7)
Black, NH		#			#	
Hispanic		#			#	
Other, NH		#			#	
<b>Sex</b>						
male		#			#	
female	13,776	90.7	(84.0-94.8)	125,536	91.0	(87.3-93.7)
<b>Age-adjusted<sup>+,&amp;</sup></b>						

& Percent is age-adjusted to the 2000 United States Population.

+ Age-adjusted and age specific percent not generated for health indicators with age range limits.

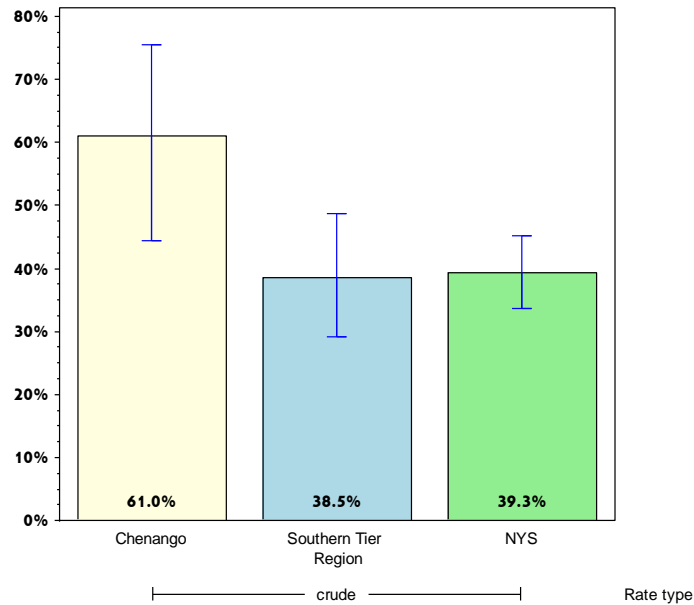
# Rates with <10 in the numerator or <50 in the denominator are suppressed.



# Chenango

## Promote Healthy Women, Infants, and Children

Percentage of women aged 18-44 years whose health care provider discussed planning a healthy pregnancy



### Chenango County

### Southern Tier

	Est. # of Adults	Percent	95% CI	Est. # of Adults	Percent	95% CI
<b>Total</b>	5,111	61.0 <sup>^</sup>	(44.3-75.5)	28,913	38.5 <sup>^</sup>	(29.1-48.7)
<b>Age<sup>+</sup></b>						
18-24						
25-34						
35-44						
45-64						
65+						
<b>Race</b>						
White, NH		#		26,118	45.0	(35.5-55.0)
Black, NH		#			#	
Hispanic		#			#	
Other, NH		#			#	
<b>Sex</b>						
male		#			#	
female	5,111	61.0 <sup>^</sup>	(44.3-75.5)	28,913	38.5 <sup>^</sup>	(29.1-48.7)
<b>Age-adjusted<sup>+,&amp;</sup></b>						

& Percent is age-adjusted to the 2000 United States Population.

+ Age-adjusted and age specific percent not generated for health indicators with age range limits.

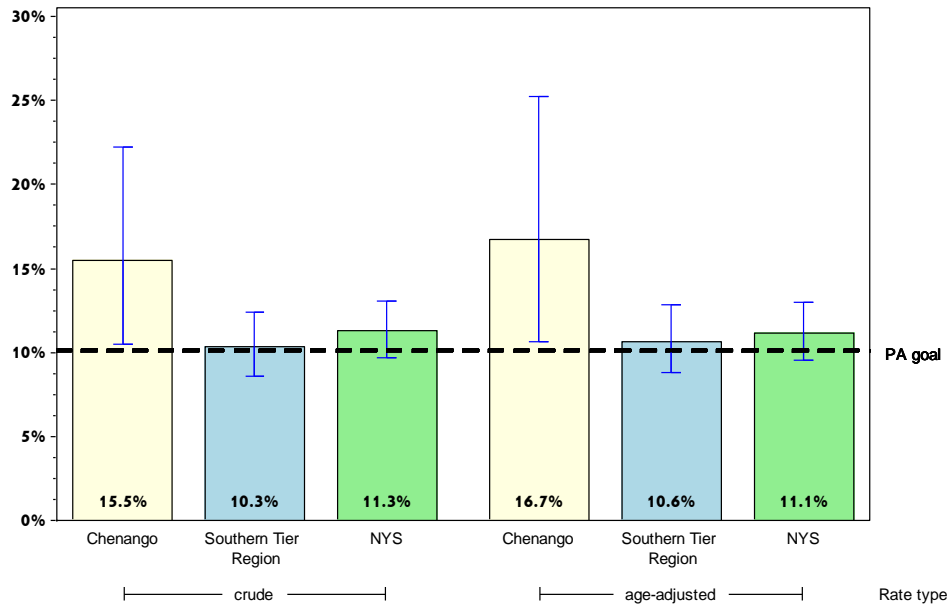
# Rates with <10 in the numerator or <50 in the denominator are suppressed.

<sup>^</sup> Highly variable rate (confidence interval with a half-width greater than 10).

# Chenango

## Promote Mental Health and Prevention Substance Abuse

### Percentage of adults with poor mental health for 14 or more days in the last month



	Chenango County			Southern Tier		
	Est. # of Adults	Percent	95% CI	Est. # of Adults	Percent	95% CI
<b>Total</b>	5,920	15.5	(10.5-22.3)	36,482	10.3	(8.6-12.4)
<b>Age</b>		#				
18-24		#		4,996	8.9	(5.0-15.3)
25-34		#		8,024	13.5	(7.8-22.5)
35-44		#		5,170	11.0	(7.3-16.3)
45-64	2,272	16.2 <sup>^</sup>	(9.4-26.5)	13,514	11.7	(9.1-14.9)
65+	1,045	12.0 <sup>^</sup>	(4.9-26.3)	4,696	6.6	(4.5-9.7)
<b>Race</b>						
White, NH	4,980	14.5	(9.6-21.4)	30,947	10.5	(8.6-12.8)
Black, NH		#			#	
Hispanic		#			#	
Other, NH		#		2,326	8.8 <sup>^</sup>	(3.8-19.1)
<b>Sex</b>						
male	3,335	17.8 <sup>^</sup>	(10.2-29.1)	16,352	9.5	(6.9-12.9)
female	2,585	13.2	(7.8-21.7)	20,130	11.2	(8.9-13.8)
<b>Age-adjusted<sup>&amp;</sup></b>		16.7	(10.7-25.2)		10.6	(8.8-12.8)

& Percent is age-adjusted to the 2000 United States Population.

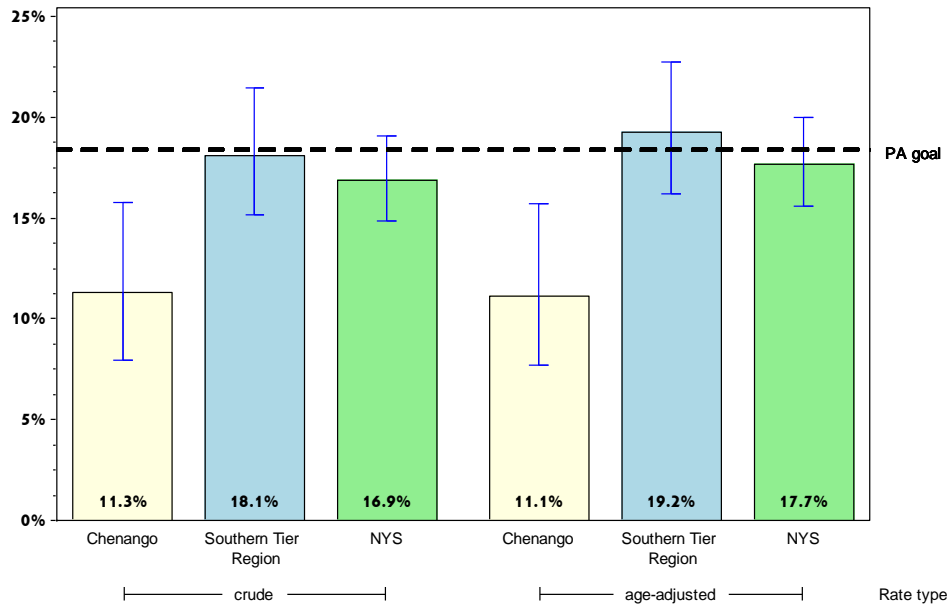
# Rates with <10 in the numerator or <50 in the denominator are suppressed.

<sup>^</sup> Highly variable rate (confidence interval with a half-width greater than 10).

# Chenango

## Promote Mental Health and Prevention Substance Abuse

### Percentage of adult binge drinking during the past month\*



#### Chenango County

#### Southern Tier

	Est. # of Adults	Percent	95% CI	Est. # of Adults	Percent	95% CI
<b>Total</b>	4,203	11.3	(7.9-15.8)	61,605	18.1	(15.2-21.4)
<b>Age</b>						
18-24	#	#		15,284	30.1 <sup>^</sup>	(19.4-43.6)
25-34	#	#		16,238	28.9 <sup>^</sup>	(18.7-41.7)
35-44	#	#		10,075	22.3	(15.8-30.6)
45-64	2,378	17.0	(10.4-26.5)	16,863	14.8	(12.0-18.2)
65+	#	#		3,145	4.5	(3.1-6.4)
<b>Race</b>						
White, NH	4,155	12.5	(8.8-17.4)	52,768	18.2	(15.5-21.3)
Black, NH	#	#		#	#	
Hispanic	#	#		#	#	
Other, NH	#	#		3,495	15.9 <sup>^</sup>	(7.6-30.2)
<b>Sex</b>						
male	2,413	12.9	(7.9-20.3)	37,622	23.0	(19.2-27.4)
female	1,791	9.6	(5.7-15.8)	23,983	13.5	(9.5-19.0)
<b>Age-adjusted<sup>&amp;</sup></b>		11.1	(7.7-15.7)		19.2	(16.2-22.7)

\* Men who have five or more drinks, women having four or more drinks on one occasion

& Percent is age-adjusted to the 2000 United States Population.

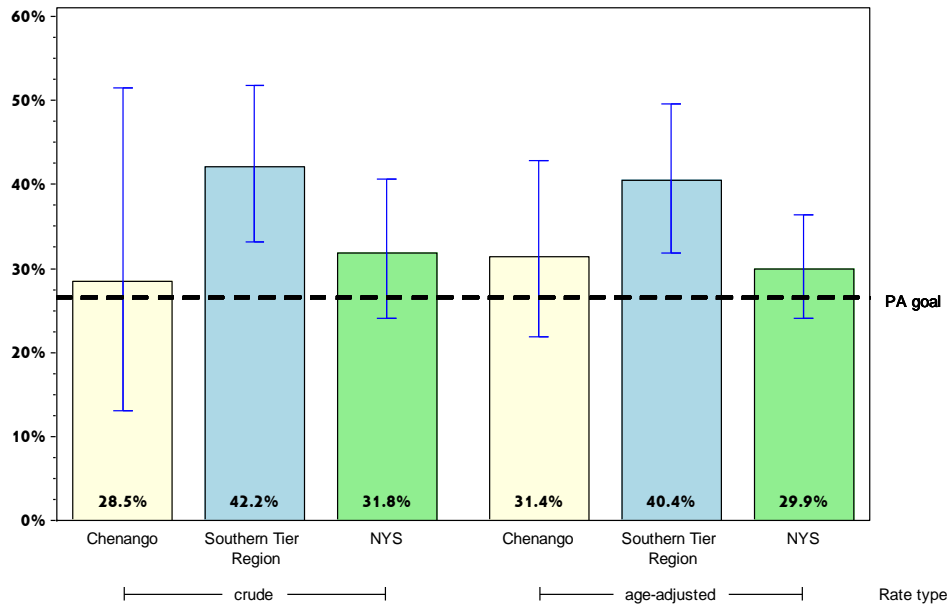
# Rates with <10 in the numerator or <50 in the denominator are suppressed.

<sup>^</sup> Highly variable rate (confidence interval with a half-width greater than 10).

# Chenango

## Promote Mental Health and Prevention Substance Abuse

### Percentage of cigarette smoking among adults who report poor mental health



#### Chenango County

#### Southern Tier

	Est. # of Adults	Percent	95% CI	Est. # of Adults	Percent	95% CI
<b>Total</b>	1,687	28.5 <sup>^</sup>	(13.0-51.5)	14,908	42.2	(33.1-51.8)
<b>Age</b>						
18-24		#			#	
25-34		#			#	
35-44		#			#	
45-64		#		5,646	42.7 <sup>^</sup>	(30.4-55.9)
65+		#		718	15.5 <sup>^</sup>	(7.1-30.8)
<b>Race</b>						
White, NH		#		12,617	42.3 <sup>^</sup>	(32.5-52.7)
Black, NH		#			#	
Hispanic		#			#	
Other, NH		#			#	
<b>Sex</b>						
male		#		5,524	34.7 <sup>^</sup>	(21.2-51.2)
female		#		9,384	48.2 <sup>^</sup>	(37.5-59.2)
<b>Age-adjusted<sup>&amp;</sup></b>		31.4 <sup>^</sup>	(21.8-42.8)		40.4	(31.9-49.6)

& Percent is age-adjusted to the 2000 United States Population.

# Rates with <10 in the numerator or <50 in the denominator are suppressed.

<sup>^</sup> Highly variable rate (confidence interval with a half-width greater than 10).