

# Northern New York

Trauma Registry Regional Progress Report 2010-2013

New York State Department of Health

Office of Primary Care and Health Systems Management

May, 2016

## Table of Contents

### Executive Summary

### Patient Information

- Summary Statistics
- Mechanism of Injury

### Emergency Medical Services

- Response Times
- Transport Times
- Initial Destination

### Referring Hospital Statistics

- Time at Referring Hospital

### Trauma Center Statistics

- Length of Stay
- Complications
- Initial Wait Time
- Discharge Disposition

### Performance Benchmarks

- Risk Ratios
- Risk Adjusted Fatality Rates

### Injury Statistics

- Characteristics of Injury Incidence
- Emergency Department Visits
- Hospitalizations
- Deaths

## Executive Summary

### Introduction

The purpose of this report is to present summary statistics of trauma-related injuries and outcomes of the care provided in each of the eight trauma regions in the State. For the years 2010-2013 there were a total of 40 trauma centers designated in New York State. Trauma clinicians, administrators and policy makers may use this report to identify important areas and issues for enhancing systems development and clinical quality improvement in their regions. The public may use this report to learn more about the trauma system in their region. As trauma centers in New York State transition to the standards of the American College of Surgeons Committee on Trauma, and additional levels of trauma center are added to the State system, this report will serve as a baseline for measuring improvements in outcome and injury prevention in each region.

### Data Sources

The New York State Trauma Registry serves as the data source. Trauma patients identified as residents of the Northern New York Region were included.

### Acknowledgement

The State Health Department would like to thank: the New York Trauma Center program staff and the Bureau of Emergency Medical Services and Trauma Systems program manager of the Office of Primary Care and Health Systems Management who have worked diligently to provide the data utilized in this report, the NYSDOH Bureau of Occupational Health and Injury Prevention for the injury statistics, and the Data Management, Analysis and Research Group who created the trauma registry and performed the statistical analyses to generate the tables and figures presented in this report.

### Data Summary

This report summarizes the trauma cases for residents of the Northern New York Region for the discharge years 2010-2013, who were included in the New York State Trauma Registry. There were a total of 5,499 trauma cases amongst the residents of the Northern New York Region. The key findings include the following:

- ▶ Annually, there were an average of 1,375 trauma incidents with a 6.02% case fatality rate.
- ▶ The median EMS response time was 8 minutes.
- ▶ The median transport time to an appropriate trauma center was 27 minutes, for adults, and 25 minutes, for children under 15 years of age.
- ▶ 40% of pediatric trauma patients were transported to an appropriately designated center.
- ▶ The median time at a referring hospital prior to transport to a trauma center for patients with an injury severity score of  $\geq 25$  was 2.4 hours.
- ▶ The median length of stay for surviving patients with an injury severity score of  $\geq 25$  was 9.7 days.
- ▶ The median time in the emergency department for patients with an injury severity score of  $\geq 25$  was 4.2 hours.
- ▶ The risk ratio,  $\frac{\text{observed fatality rate}}{\text{expected fatality rate}}$ , for all trauma from the Northern New York Region was 0.93. (State average is 1)



## Northern New York (NNY) Incident Summary (with comparison to state)

Categories	Northern New York		Incidence*		Case Fatality Rate**	
	Incidents	Fatalities	NNY	State	NNY	State
<b>Year</b>						
2010	1,357	77	9.01	9.05	5.67	6.39
2011	1,313	80	8.72	8.73	6.09	6.79
2012	1,415	92	9.39	8.59	6.50	6.77
2013	1,414	82	9.38	8.16	5.80	6.58
<b>Age</b>						
0-5	220	8	5.80	5.38	3.64	2.14
6-13	192	4	3.46	3.06	2.08	1.73
14-34	1,444	41	8.72	8.06	2.84	4.96
35-64	1,943	86	7.78	7.17	4.43	5.28
65+	1,700	192	19.42	21.13	11.29	10.63
<b>Sex</b>						
Male	3,596	206	12.03	11.72	5.73	6.80
Female	1,903	125	6.27	5.72	6.57	6.31
<b>ISS</b>						
0-9	1,938	57	3.22	3.07	2.94	1.77
10-15	1,153	22	1.91	1.83	1.91	1.86
16-24	1,568	49	2.60	2.23	3.12	4.44
25-34	657	147	1.09	0.89	22.37	25.31
35-75	173	56	0.29	0.31	32.37	45.37
NA	10	0	0.02	0.29	0.00	6.73
<b>Four Year Total</b>						
All Trauma	5,499	331	9.13	8.63	6.02	6.63

\* Incidents per 10,000 residents

\*\* Case Fatality Rate as a percent



## Northern New York (NNY) Regional Incident Classification (with comparison to state)

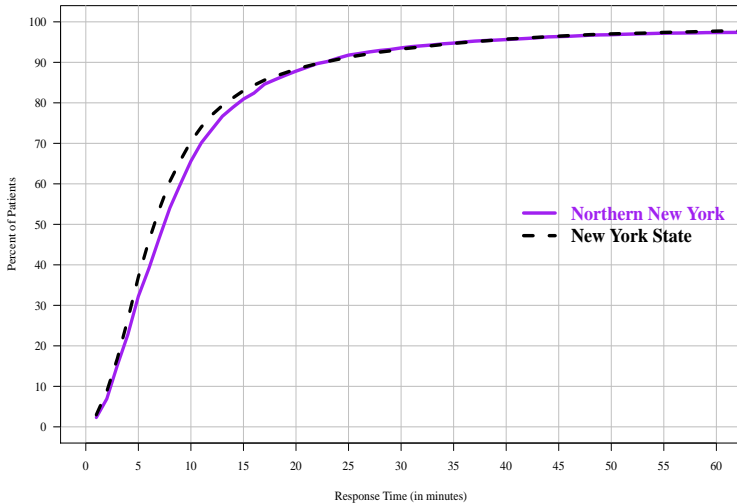
Category	Northern New York		Incidence*		Case Fatality Rate**	
	Incidents	Fatalities	NNY	State	NNY	State
<b>Selected Mechanism of Injury</b>						
Fall	2,346	185	3.89	3.67	7.89	7.33
Motor Vehicle Traffic	1,701	90	2.82	2.47	5.29	6.67
Struck by, against	356	14	0.59	0.55	3.93	2.07
Transport, non traffic	333	7	0.55	0.28	2.10	3.16
Firearm	121	14	0.20	0.38	11.57	14.02
<b>Intention of Injury</b>						
Unintentional	4,923	302	8.17	6.99	6.13	6.60
Assault	423	13	0.70	1.02	3.07	5.87
Undetermined/Other	83	14	0.14	0.54	16.87	6.45
Self-Inflicted	70	13	0.12	0.08	18.57	19.88
<b>Type of Injury</b>						
Blunt	4,913	299	8.15	7.18	6.09	6.41
Penetrating	306	18	0.51	0.63	5.88	9.79
Other	280	14	0.46	0.82	5.00	6.15
<b>Four Year Total</b>						
All Trauma	5,499	331	9.13	8.63	6.02	6.63

\* Incidents per 10,000 residents

\*\* Case Fatality Rate as a percent



## Emergency Medical Service Response Time\*

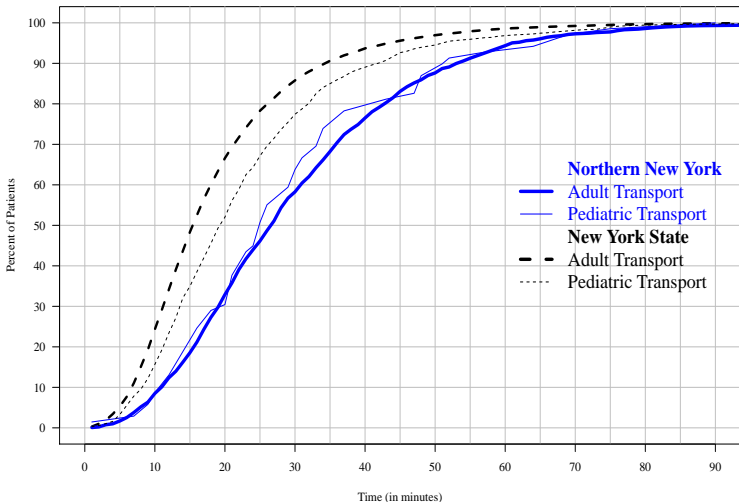


This plot shows the percent of incidents responded to by EMS within a given time period.

\*Response time is calculated as the time from emergency phone call to medical service's arrival at scene.



## Emergency Medical Service Transport Time\* to Patient Appropriate Trauma Center\*\*



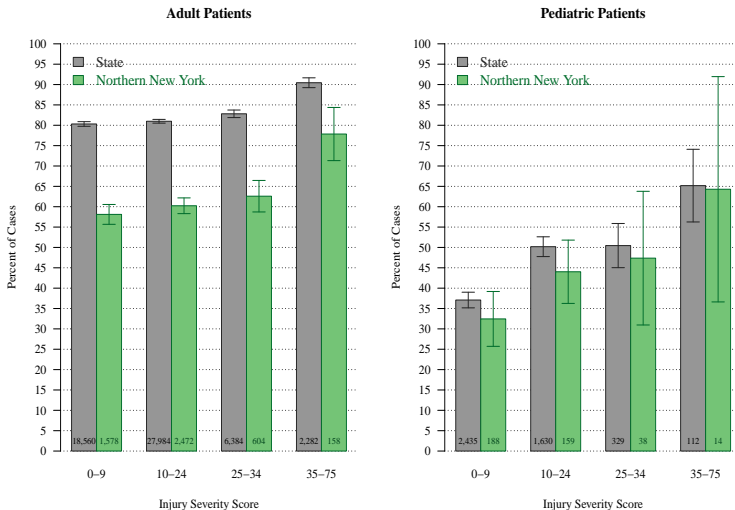
This plot shows the percent of trauma patients transported to an appropriate center within a given time period.

\*Transport time is calculated as time from emergency medical service's departure from the scene of injury to arrival at hospital.

\*\*Patient appropriate trauma center means either pediatric or dual designated for patients under 15 and either adult or dual designation for patients over 15 years of age.



### Patients Transported by EMS to an Appropriate Trauma Center by Designation and Injury Severity Score



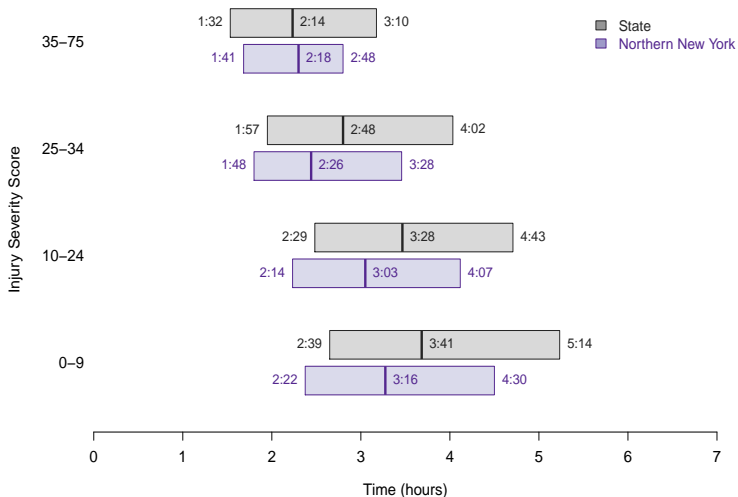
Registry data only includes data from patients that made it to a Trauma Center. Walk-ins excluded. 95% confidence intervals are shown around means.

Appropriate trauma center means either pediatric or dual designated for patients under 15 and either adult or dual designated for patients over 15 years of age.





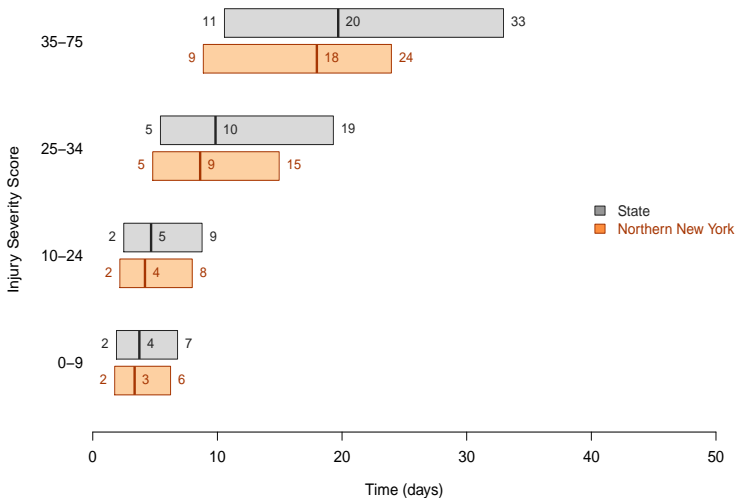
### Quartile Plot of Time at Referring Hospital by Injury Severity Score (for patients who were referred to a trauma center)



The quartile plot highlights the middle 50% of patients with the box. The center line denotes the median (the 50<sup>th</sup> percentile), 25% of patients therefore fall below the range of the box, and 25% fall above the range of the box.



### Quartile Plot of Length of Stay by Injury Severity Score (for patients who lived)



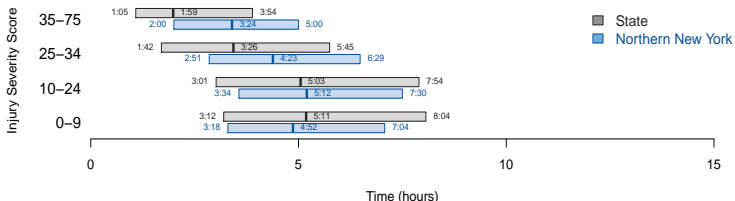
The quartile plot highlights the middle 50% of patients with the box. The center line denotes the median (the 50<sup>th</sup> percentile), 25% of patients therefore fall below the range of the box, and 25% fall above the range of the box.



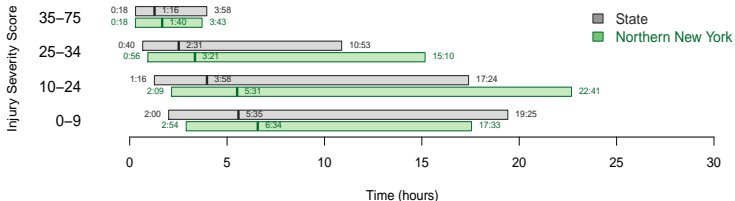
## Northern New York (NNY) Complication Incidence and Mortality

Complications	Northern New York		Frequency (%)		Fatality Rate (%)	
	Incidents	Fatalities	NNY	State	NNY	State
other unspecified	162	14	2.95	4.31	8.6	18.4
acute lung injury	44	7	0.80	2.25	15.9	24.0
new urinary tract infection	36	3	0.65	1.96	8.3	8.2
pneumonia	32	4	0.58	2.71	12.5	16.5
acute kidney injury	22	2	0.40	0.89	9.1	28.1
cardiac arrest in hospital	12	8	0.22	0.88	66.7	82.7
deep vein thrombosis	8	0	0.15	0.83	0.0	9.5
new decubitus ulcer	7	1	0.13	0.69	14.3	13.4
unplanned intubation	7	2	0.13	0.62	28.6	28.9
extremity compartment syndrome	4	0	0.07	0.31	0.0	4.8
severe sepsis	4	0	0.07	0.93	0.0	33.3
superficial surgical site infection	3	0	0.05	0.19	0.0	2.3
unplanned return to ICU	3	1	0.05	0.13	33.3	12.8
pulmonary embolism	2	0	0.04	0.35	0.0	13.5
withdrawal from alcohol or drugs	2	0	0.04	0.94	0.0	2.8
catheter related blood stream infection	1	0	0.02	0.10	0.0	14.3
new myocardial infarction	1	1	0.02	0.24	100.0	33.3
new stroke or cerebral vascular accident	1	1	0.02	0.14	100.0	18.6
deep surgical site infection	0	0	0.00	0.13	0.0	7.8
failure of graft, flap, or prosthesis	0	0	0.00	0.03	0.0	0.0
organ or space surgical site infection	0	0	0.00	0.11	0.0	4.0
new bone infection	0	0	0.00	0.03	0.0	0.0

### Quartile Plot of Time In Emergency Department by Injury Severity Score

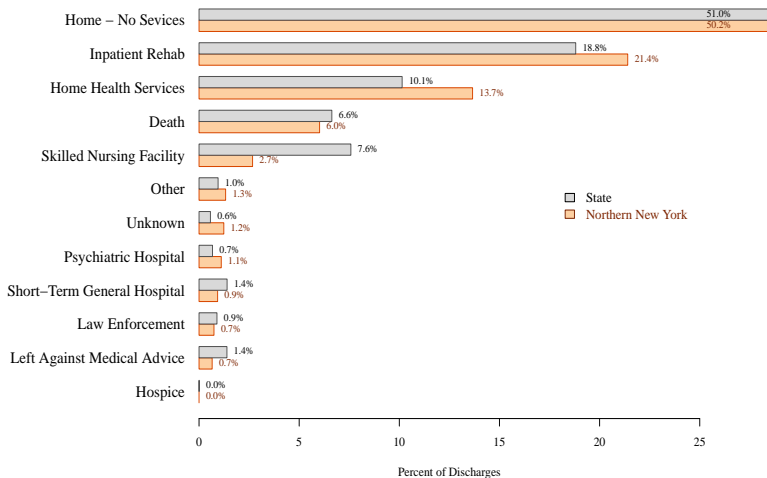


### Quartile Plot of Time Until First Procedure by Injury Severity Score



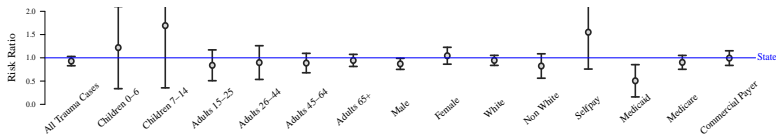
The quartile plot highlights the middle 50% of patients with the box. The center line denotes the median (the 50<sup>th</sup> percentile), 25% of patients therefore fall below the range of the box, and 25% fall above the range of the box.

## Discharge Destination

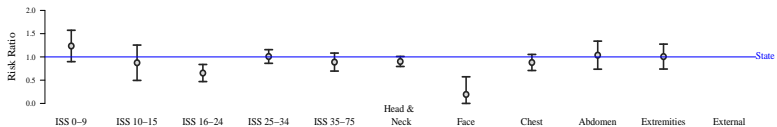


Note that axis margin cuts off full length of discharged to home bar.

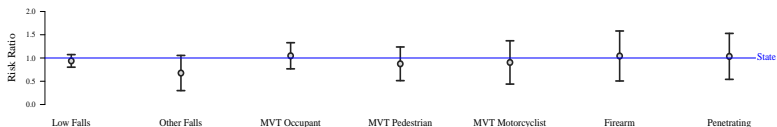
## Risk by Patient Characteristics



## Risk by Severity and Location of Injury



## Risk by Type of Trauma



$$\text{Risk Ratio} = \frac{\text{observed fatality rate}}{\text{expected fatality rate}}$$

Expected rate is estimated using a multivariate logistic regression adjusting for risk factors: age, gender, injury severity, injury body region, injury type, Glasgow coma motor score, systolic blood pressure, mechanism of trauma, prehospital care, and existing comorbidities.

## Northern New York Regional Risk Adjusted Fatality Rates

Categories	Northern New York Region (NNY)			Comparison*		
	N	Observed	Expected	Risk Ratio	State	NNY
<b>Overall</b>						
All Trauma Cases	5,191	6.0%	6.5%	0.9 ±0.1	6.6%	6.1%
<b>Age</b>						
Children 0-6	135	5.2%	4.3%	1.2 ±0.9	2.3%	2.8%
Children 7-14	215	2.8%	1.6%	1.7 ±1.3	2.1%	3.6%
Adults 15-25	881	2.7%	3.2%	0.8 ±0.3	4.7%	3.9%
Adults 26-44	937	2.5%	2.7%	0.9 ±0.4	4.6%	4.2%
Adults 45-64	1,328	5.0%	5.6%	0.9 ±0.2	5.5%	4.9%
Adults 65+	1,566	11.5%	12.2%	0.9 ±0.1	10.6%	10.0%
<b>Gender</b>						
Male	3,404	5.7%	6.5%	0.9 ±0.1	6.8%	5.9%
Female	1,787	6.7%	6.4%	1.0 ±0.2	6.2%	6.4%
<b>Race</b>						
White	4,485	6.2%	6.5%	0.9 ±0.1	6.9%	6.5%
Non White	706	5.1%	6.2%	0.8 ±0.3	5.9%	4.9%
<b>Primary Payor</b>						
Selfpay	266	5.3%	3.4%	1.6 ±0.8	10.0%	15.5%
Medicaid	316	2.5%	5.0%	0.5 ±0.3	4.0%	2.0%
Medicare	1,192	10.6%	11.7%	0.9 ±0.1	9.8%	8.9%
Commercial Payer	2,874	5.1%	5.1%	1.0 ±0.2	5.2%	5.2%

State comparison is risk adjusted. N values reflect data available for accurate risk adjustment (not regional totals). Risk ratio quotes a 95% confidence interval.

## Northern New York Regional Risk Adjusted Fatality Rates

Categories	Northern New York Region (NNY)				Comparison*	
	N	Observed	Expected	Risk Ratio	State	NNY
<b>Injury Severity Score (ISS)</b>						
ISS 0-9	1,764	2.8%	2.3%	1.2 ±0.3	1.8%	2.2%
ISS 10-15	1,113	1.8%	2.1%	0.9 ±0.4	1.8%	1.6%
ISS 16-24	1,515	3.1%	4.7%	0.7 ±0.2	4.3%	2.8%
ISS 25-34	630	22.4%	22.2%	1.0 ±0.1	25.2%	25.4%
ISS 35-75	169	32.5%	36.6%	0.9 ±0.2	44.6%	39.6%
<b>Location of Injury</b>						
Head & Neck	2,368	10.2%	11.3%	0.9 ±0.1	10.5%	9.5%
Face	32	3.1%	16.2%	0.2 ±0.4	15.0%	2.9%
Chest	1,582	5.9%	6.7%	0.9 ±0.2	8.6%	7.6%
Abdomen	544	7.7%	7.4%	1.0 ±0.3	10.5%	10.9%
Extremities	1,202	4.3%	4.3%	1.0 ±0.3	5.7%	5.7%
External	0	NaN%	NaN%	NaN ±NA	33.6%	NaN%
<b>Falls</b>						
Low Falls	1,756	9.5%	10.1%	0.9 ±0.1	8.0%	7.5%
Other Falls	449	2.7%	3.9%	0.7 ±0.4	3.8%	2.6%
<b>Motor Vehical Traffic (MVT)</b>						
MVT Occupant	1,075	4.7%	4.5%	1.0 ±0.3	5.7%	6.0%
MVT Pedestrian	175	11.4%	13.1%	0.9 ±0.4	9.9%	8.7%
MVT Motorcyclist	366	3.8%	4.2%	0.9 ±0.5	5.2%	4.7%
<b>Other</b>						
Firearm	119	10.9%	10.5%	1.0 ±0.5	12.8%	13.4%
Penetrating	299	5.4%	5.2%	1.0 ±0.5	9.1%	9.4%

State comparison is risk adjusted. N values reflect data available for accurate risk adjustment (not regional totals). Risk ratio quotes a 95% confidence interval.





## Characteristics of Injury Incidence Deaths, Hospitalizations, and Emergency Department<sup>†</sup> (ED) Visits Northernmost Region Residents, 2010-2012

	Deaths		Hospitalizations		ED Visits	
	Mean Annual Frequency	Rate per 100,000 Residents	Mean Annual Frequency	Rate per 100,000 Residents	Mean Annual Frequency	Rate per 100,000 Residents
<b>Total</b>	658	44	12,296	822.2	133,395	8,919.8
<b>Age Group</b>						
0-1	3	20.5**	51	346.9	931	6,376.2
1-4	6	9.6**	147	236	7,629	12,220.5
5-9	4	4.5**	102	126.2	6,925	8,569.5
10-14	7	7.6	176	201.2	10,079	11,498
15-19	28	25.8	477	440	13,265	12,245.6
20-24	50	44	548	486	13,446	11,924.9
25-44	151	41.5	1,906	525.3	37,232	10,263.9
45-64	186	42.6	2,806	644.3	27,936	6,414.8
65+	224	97.3	6,084	2,637.5	15,953	6,915.8
<b>Gender</b>						
Male	461	62.1	5,605	760.3	69,645	9,388
Female	197	26.1	6,691	893.4	63,746	8,458.6
Unknown	0	n/a	*	n/a	3	n/a
<b>Percent Traumatic Brain Injury</b>	30%		10%		8%	
<b>Mean Charge per Hospitalization or ED Visit</b>	n/a		\$29,565		\$1,383	
<b>Mean One Year Total Hospitalization or ED Visit Charges</b>	n/a		\$363,536,697		\$184,457,583	
<b>Three Year Total Hospitalization or ED Visit Charges</b>	n/a		\$1,090,610,092		\$553,372,750	
<b>Average Length of Hospital Stay (Days)</b>	n/a		6		n/a	

<sup>†</sup>The incidence of ED visits does not include patients who were subsequently admitted into the hospital  
Rate = Frequency / Population \* 100,000

\*Data based on frequencies less than six not reported

\*\*Caution: Rates calculated using frequencies of less than 20 are unstable

Source: NYSDOH, Bureau of Occupational Health and Injury Prevention  
[www.health.ny.gov/prevention/injury\\_prevention/](http://www.health.ny.gov/prevention/injury_prevention/)

SPARCS December 2013

Vital Statistics Death File February 2014



Emergency Department (ED)† Visits Due to Injury  
 Leading Causes by Age Group  
 Northeastern Trauma Region, New York State Residents, 2010-2012

Rank	Age Group									
	0<1	1-4	5-9	10-14	15-19	20-24	25-44	45-64	65+	Total
1	Fall 442 (47%)	Fall 2,925 (38%)	Fall 2,194 (32%)	Fall 2,574 (26%)	Struck By, Against 2,774 (21%)	Fall 2,187 (16%)	Fall 6,934 (19%)	Fall 8,009 (29%)	Fall 9,067 (57%)	Fall 36,597 (27%)
2	Struck By, Against 109 (12%)	Struck By, Against 1,160 (15%)	Struck By, Against 1,385 (20%)	Struck By, Against 2,435 (24%)	Fall 2,264 (17%)	Struck By, Against 1,697 (13%)	Overexertion 5,461 (15%)	Overexertion 3,141 (11%)	Unspecified 1,279 (8%)	Struck By, Against 17,097 (13%)
3	Natural / Environmental 57 (6%)	Natural / Environmental 787 (10%)	Natural / Environmental 651 (9%)	Overexertion 1,088 (11%)	Overexertion 1,520 (11%)	Overexertion 1,615 (12%)	Struck By, Against 4,138 (11%)	Cut / Pierce 2,766 (10%)	Struck By, Against 886 (6%)	Overexertion 14,101 (11%)
4	Unspecified 53 (6%)	Cut / Pierce 385 (5%)	Cut / Pierce 537 (8%)	Cut / Pierce 652 (6%)	Cut / Pierce 1,004 (8%)	Cut / Pierce 1,384 (10%)	Cut / Pierce 3,740 (10%)	Struck By, Against 2,515 (9%)	Cut / Pierce 859 (5%)	Cut / Pierce 11,353 (9%)
5	Poisoning 33 (4%)	Unspecified 364 (5%)	Unspecified 324 (5%)	Unspecified 562 (6%)	MVT*, Occupant 947 (7%)	Assault 1,139 (8%)	Unspecified 3,516 (9%)	Unspecified 2,484 (9%)	Natural / Environmental 753 (5%)	Unspecified 10,553 (8%)
6	MVT*, Occupant 28 (3%)	Poisoning 280 (4%)	Overexertion 296 (4%)	Environmental 436 (4%)	Unspecified 892 (7%)	MVT*, Occupant 1,112 (8%)	MVT*, Occupant 2,458 (7%)	Environmental 1,728 (6%)	Overexertion 727 (5%)	MVT*, Occupant 7,345 (6%)
7	Hot Object / Scald 27 (3%)	Overexertion 236 (3%)	Pedal Cyclist, Non- Traffic 230 (3%)	Pedal Cyclist, Non- Traffic 389 (4%)	Assault 824 (6%)	Unspecified 1,079 (8%)	Assault 2,163 (6%)	MVT*, Occupant 1,704 (6%)	MVT*, Occupant 618 (4%)	Natural / Environmental 7,222 (5%)
8	Cut / Pierce 26 (3%)	Hot Object / Scald 161 (2%)	MVT*, Occupant 177 (3%)	Assault 262 (3%)	Natural / Environmental 447 (3%)	Natural / Environmental 572 (4%)	Natural / Environmental 1,791 (5%)	Assault 750 (3%)	Poisoning 175 (1%)	Assault 5,301 (4%)
9	Overexertion 16 (2%)	MVT*, Occupant 121 (2%)	Transport, Non- Traffic 71 (1%)	MVT*, Occupant 180 (2%)	Self-inflicted 291 (2%)	Transport, Non- Traffic 211 (2%)	Transport, Non- Traffic 463 (1%)	Poisoning 321 (1%)	Machinery 103 (1%)	Poisoning 1,648 (1%)
10	Suffocation 8 (1%)	Pedal Cyclist, Non- Traffic 51 (1%)	Poisoning 70 (1%)	Transport, Non- Traffic 164 (2%)	Transport, Non- Traffic 255 (2%)	Self-inflicted 205 (2%)	Poisoning 414 (1%)	Machinery 274 (1%)	Transport, Non- Traffic 72 (0%)	Transport, Non- Traffic 1,533 (1%)

Yearly Average (percent of age group)

MVT\* = Motor Vehicle Traffic

\*Data based on three year total frequencies of less than six are not reportable

	Intentional Injury
	Unintentional Injury

Source: NYSDOH, Bureau of Occupational Health and Injury Prevention

[www.health.ny.gov/statistics](http://www.health.ny.gov/statistics)

STATISTICS 2013

NYSDOH

01/14/2013

01/14/2013

01/14/2013

01/14/2013

01/14/2013

01/14/2013

Hospitalizations Due to Injury  
Leading Causes by Age Group  
Northeastern Trauma Region, New York State Residents, 2010-2012

Rank	Age Group									
	0<1	1-4	5-9	10-14	15-19	20-24	25-44	45-64	65+	Total
1	Fall 17 (34%)	Fall 39 (26%)	Fall 38 (37%)	Fall 36 (20%)	Self-inflicted 164 (34%)	Self-inflicted 151 (28%)	Self-inflicted 518 (27%)	Fall 1,127 (40%)	Fall 4,608 (76%)	Fall 6,285 (51%)
2	Assault 8 (15%)	Poisoning 25 (17%)	Natural / Environmental 11 (11%)	Self-inflicted 36 (20%)	Fall 54 (11%)	MVT <sup>a</sup> , Occupant 65 (12%)	Fall 313 (16%)	Self-inflicted 304 (11%)	Unspecified 330 (5%)	Self-inflicted 1,226 (10%)
3	Natural / Environmental 4 (9%)	Natural / Environmental 15 (10%)	Struck By, Against 6 (6%)	Struck By, Against 16 (9%)	MVT <sup>a</sup> , Occupant 54 (11%)	Assault 58 (11%)	Poisoning 151 (8%)	Poisoning 231 (8%)	Poisoning 221 (4%)	Poisoning 697 (6%)
4	Unspecified 4 (8%)	Hot Object / Scald 14 (9%)	Poisoning 6 (6%)	Transport, Non-Traffic 13 (7%)	Assault 41 (9%)	Fall 53 (10%)	MVT <sup>a</sup> , Occupant 130 (7%)	Unspecified 164 (6%)	MVT <sup>a</sup> , Occupant 152 (2%)	Unspecified 621 (5%)
5	Poisoning 4 (7%)	Struck By, Against 8 (5%)	MVT <sup>a</sup> , Occupant 6 (6%)	Pedal Cyclist, Non-Traffic 12 (7%)	Transport, Non-Traffic 27 (6%)	Poisoning 34 (6%)	Assault 127 (7%)	MVT <sup>a</sup> , Occupant 163 (6%)	Natural / Environmental 100 (2%)	MVT <sup>a</sup> , Occupant 579 (5%)
6	Struck By, Against 2 (4%)	Assault 6 (4%)	Cut / Pierce 4 (4%)	Assault 7 (4%)	Struck By, Against 22 (5%)	Transport, Non-Traffic 25 (5%)	Unspecified 85 (4%)	Natural / Environmental 101 (4%)	Struck By, Against 98 (2%)	Assault 324 (3%)
7	Suffocation 2 (4%)	Unspecified 5 (3%)	Pedal Cyclist, Non-Traffic 4 (4%)	MVT <sup>a</sup> , Occupant 6 (4%)	Poisoning 20 (4%)	Struck By, Against 20 (4%)	Transport, Non-Traffic 68 (4%)	MVT <sup>a</sup> , Motorcyclist 74 (3%)	Suffocation 2 (2%)	Struck By, Against 309 (3%)
8	*	MVT <sup>a</sup> , Occupant 3 (2%)	Transport, Non-Traffic 3 (3%)	Natural / Environmental 6 (3%)	Pedal Cyclist, Non-Traffic 9 (2%)	MVT <sup>a</sup> , Motorcyclist 20 (4%)	Struck By, Against 66 (3%)	Struck By, Against 72 (3%)	Overexertion 54 (1%)	Transport, Non-Traffic 228 (2%)
9	*	Cut / Pierce 3 (2%)	MVT <sup>a</sup> , Pedestrian 3 (3%)	Unspecified 5 (3%)	Unspecified 9 (2%)	Unspecified 17 (3%)	Environmental 60 (3%)	Assault 64 (2%)	Self-inflicted 53 (1%)	MVT <sup>a</sup> , Motorcyclist 162 (1%)
10	*	Suffocation 3 (2%)	Fire / Flame 2 (2%)	MVT <sup>a</sup> , Pedestrian 5 (3%)	MVT <sup>a</sup> , Pedestrian 8 (2%)	Environmental 15 (3%)	MVT <sup>a</sup> , Motorcyclist 51 (3%)	Transport, Non-Traffic 58 (2%)	Transport, Non-Traffic 32 (1%)	Cut / Pierce 145 (1%)

Yearly Average (percent of age group)

MVT<sup>a</sup> = Motor Vehicle Traffic

\*Data based on three year total frequencies of less than six are not reportable

	Intentional Injury
	Unintentional Injury

Source: NYSDOH, Bureau of Occupational Health and Injury Prevention

[www.health.ny.gov/statistics](http://www.health.ny.gov/statistics)

STAT 06-13

STATISTICS DEPARTMENT

01/19/2013

01/19/2013

01/19/2013

01/19/2013

01/19/2013

01/19/2013

Injury Related Deaths  
Leading Causes by Age Group  
Northeastern Trauma Region, New York State Residents, 2010-2012

Rank	Age Group									
	0<1	1-4	5-9	10-14	15-19	20-24	25-44	45-64	65+	Total
1	Suffocation 2 (67%)	*	*	*	Suicide 9 (32%)	Suicide 15 (30%)	Suicide 56 (37%)	Suicide 66 (36%)	Fall 70 (31%)	Suicide 177 (27%)
2	*	*	*	*	MVT <sup>a</sup> , Occupant 5 (19%)	MVT <sup>a</sup> , Unspecified 7 (14%)	Poisoning 25 (17%)	Poisoning 27 (15%)	Unspecified 37 (16%)	Fall 87 (13%)
3	*	*	*	*	MVT <sup>a</sup> , Unspecified 5 (19%)	Homicide 6 (13%)	MVT <sup>a</sup> , Unspecified 12 (8%)	Fall 14 (7%)	Suicide 31 (14%)	Poisoning 61 (9%)
4	*	*	*	*	Homicide 3 (10%)	MVT <sup>a</sup> , Occupant 4 (7%)	Homicide 10 (6%)	MVT <sup>a</sup> , Occupant 10 (5%)	Suffocation 22 (10%)	MVT <sup>a</sup> , Unspecified 48 (7%)
5			*	*	*	Poisoning 3 (6%)	MVT <sup>a</sup> , Occupant 8 (6%)	MVT <sup>a</sup> , Unspecified 8 (4%)	MVT <sup>a</sup> , Unspecified 14 (6%)	Unspecified 44 (7%)
6			*	*	*	MVT <sup>a</sup> , Motorcyclist 3 (6%)	MVT <sup>a</sup> , Motorcyclist 6 (4%)	Homicide 7 (4%)	MVT <sup>a</sup> , Occupant 13 (6%)	MVT <sup>a</sup> , Occupant 42 (6%)
7				*	*	MVT <sup>a</sup> , Pedestrian 2 (4%)	Fall 3 (2%)	MVT <sup>a</sup> , Motorcyclist 6 (3%)	MVT <sup>a</sup> , Pedestrian 7 (3%)	Suffocation 32 (5%)
8				*	*	*	Transport, Non-Traffic 3 (2%)	Suffocation 5 (3%)	Poisoning 6 (3%)	Homicide 31 (5%)
9					*	*	Suffocation 2 (2%)	Unspecified 5 (3%)	Fire / Flame 6 (3%)	MVT <sup>a</sup> , Pedestrian 19 (3%)
10					*	*	MVT <sup>a</sup> , Pedestrian 2 (2%)	MVT <sup>a</sup> , Pedestrian 4 (2%)	Natural / Environmental 3 (1%)	MVT <sup>a</sup> , Motorcyclist 17 (3%)
Yearly Average (percent of age group)										

MVT<sup>a</sup> = Motor Vehicle Traffic

\*Data based on three year total frequencies of less than six are not reportable

	Intentional Injury
	Unintentional Injury

Source: NYSDOH, Bureau of Occupational Health and Injury Prevention

[www.health.ny.gov/injury/](http://www.health.ny.gov/injury/)

STATISTICS DEPARTMENT

INJURY PREVENTION

2010-2012

NEW YORK STATE

DEPARTMENT OF HEALTH