

New York City

Trauma Registry Regional Progress Report 2010-2013

New York State Department of Health

Office of Primary Care and Health Systems Management

May, 2016

Table of Contents

Executive Summary

Patient Information

- Summary Statistics
- Mechanism of Injury

Emergency Medical Services

- Response Times
- Transport Times
- Initial Destination

Referring Hospital Statistics

- Time at Referring Hospital

Trauma Center Statistics

- Length of Stay
- Complications
- Initial Wait Time
- Discharge Disposition

Performance Benchmarks

- Risk Ratios
- Risk Adjusted Fatality Rates

Injury Statistics

- Characteristics of Injury Incidence
- Emergency Department Visits
- Hospitalizations
- Deaths

Executive Summary

Introduction

The purpose of this report is to present summary statistics of trauma-related injuries and outcomes of the care provided in each of the eight trauma regions in the State. For the years 2010-2013 there were a total of 40 trauma centers designated in New York State. Trauma clinicians, administrators and policy makers may use this report to identify important areas and issues for enhancing systems development and clinical quality improvement in their regions. The public may use this report to learn more about the trauma system in their region. As trauma centers in New York State transition to the standards of the American College of Surgeons Committee on Trauma, and additional levels of trauma center are added to the State system, this report will serve as a baseline for measuring improvements in outcome and injury prevention in each region.

Data Sources

The New York State Trauma Registry serves as the data source. Trauma patients identified as residents of the New York City Region were included.

Acknowledgement

The State Health Department would like to thank: the New York Trauma Center program staff and the Bureau of Emergency Medical Services and Trauma Systems program manager of the Office of Primary Care and Health Systems Management who have worked diligently to provide the data utilized in this report, the NYSDOH Bureau of Occupational Health and Injury Prevention for the injury statistics, and the Data Management, Analysis and Research Group who created the trauma registry and performed the statistical analyses to generate the tables and figures presented in this report.

Data Summary

This report summarizes the trauma cases for residents of the New York City Region for the discharge years 2010-2013, who were included in the New York State Trauma Registry. There were a total of 23,879 trauma cases amongst the residents of the New York City Region. The key findings include the following:

- ▶ Annually, there were an average of 5,970 trauma incidents with a 6.33% case fatality rate.
- ▶ The median EMS response time was 5 minutes.
- ▶ The median transport time to an appropriate trauma center was 14 minutes, for adults, and 17 minutes, for children under 15 years of age.
- ▶ 50% of pediatric trauma patients were transported to an appropriately designated center.
- ▶ The median time at a referring hospital prior to transport to a trauma center for patients with an injury severity score of ≥ 25 was 3.3 hours.
- ▶ The median length of stay for surviving patients with an injury severity score of ≥ 25 was 11.8 days.
- ▶ The median time in the emergency department for patients with an injury severity score of ≥ 25 was 2.5 hours.
- ▶ The risk ratio, $\frac{\text{observed fatality rate}}{\text{expected fatality rate}}$, for all trauma from the New York City Region was 1.03. (State average is 1)



New York City (NYC) Incident Summary (with comparison to state)

Categories	New York City		Incidence*		Case Fatality Rate**	
	Incidents	Fatalities	NYC	State	NYC	State
Year						
2010	6,684	397	8.16	9.05	5.94	6.39
2011	6,134	400	7.41	8.73	6.52	6.79
2012	5,828	389	6.98	8.59	6.67	6.77
2013	5,233	325	6.23	8.16	6.21	6.58
Age						
0-5	954	15	3.86	5.38	1.57	2.14
6-13	686	7	2.29	3.06	1.02	1.73
14-34	7,231	392	6.67	8.06	5.42	4.96
35-64	7,745	427	6.14	7.17	5.51	5.28
65+	7,252	670	18.90	21.13	9.24	10.63
Sex						
Male	16,401	1029	10.37	11.72	6.27	6.80
Female	7,478	482	4.30	5.72	6.45	6.31
ISS						
0-9	8,651	98	2.60	3.07	1.13	1.77
10-15	5,054	65	1.52	1.83	1.29	1.86
16-24	6,132	251	1.85	2.23	4.09	4.44
25-34	2,126	591	0.64	0.89	27.80	25.31
35-75	705	413	0.21	0.31	58.58	45.37
NA	1,211	93	0.36	0.29	7.68	6.73
Four Year Total						
All Trauma	23,879	1511	7.19	8.63	6.33	6.63

* Incidents per 10,000 residents

** Case Fatality Rate as a percent



New York City (NYC) Regional Incident Classification (with comparison to state)

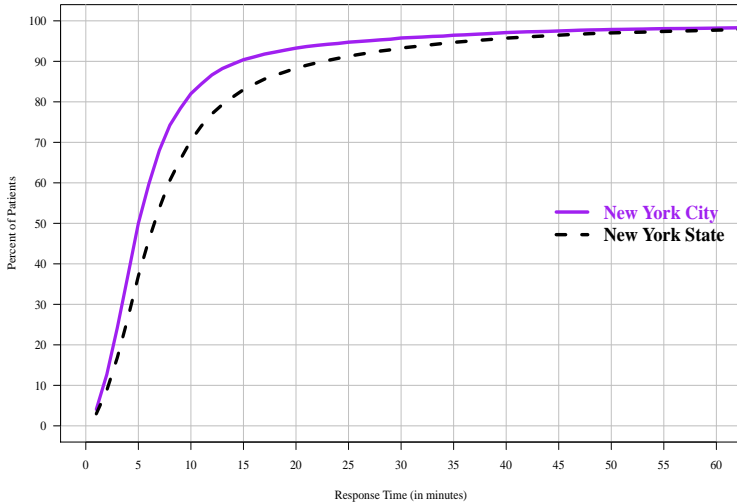
Category	New York City		Incidence*		Case Fatality Rate**		
	Incidents	Fatalities	NYC	State	NYC	State	
Selected Mechanism of Injury							
Fall	9,793	653	2.95	3.67	6.67	7.33	
Motor Vehicle Traffic	5,473	367	1.65	2.47	6.71	6.67	
Struck by, against	1,704	25	0.51	0.55	1.47	2.07	
Firearm	1,642	194	0.49	0.38	11.81	14.02	
Cut / Pierce	952	27	0.29	0.24	2.84	3.19	
Unspecified	496	24	0.15	0.13	4.84	7.05	
Other Specified, NEC	451	9	0.14	0.08	2.00	3.17	
Intention of Injury							
Unintentional	16,629	1055	5.01	6.99	6.34	6.60	
Assault	4,496	249	1.35	1.02	5.54	5.87	
Undetermined/Other	2,527	258	0.76	0.54	10.21	6.45	
Self-Inflicted	227	43	0.07	0.08	18.94	19.88	
Type of Injury							
Blunt	17,724	1077	5.34	7.18	6.08	6.41	
Other	3,561	213	1.07	0.82	5.98	6.15	
Penetrating	2,594	221	0.78	0.63	8.52	9.79	
Four Year Total							
All Trauma	23,879	1511	7.19	8.63	6.33	6.63	

* Incidents per 10,000 residents

** Case Fatality Rate as a percent



Emergency Medical Service Response Time*

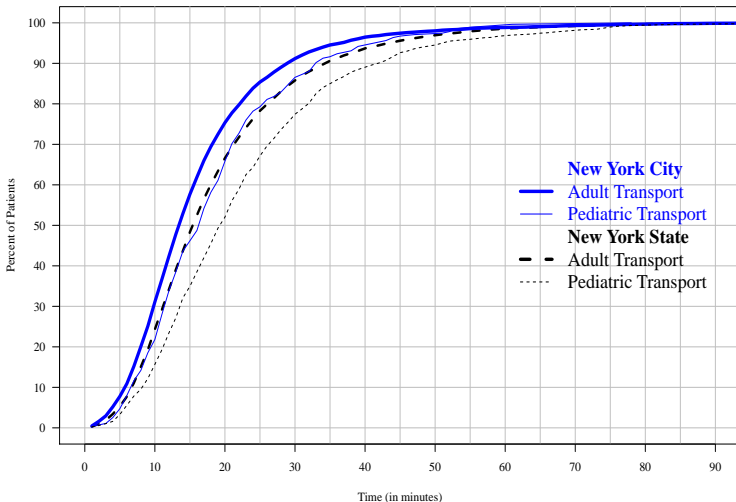


This plot shows the percent of incidents responded to by EMS within a given time period.

*Response time is calculated as the time from emergency phone call to medical service's arrival at scene.



Emergency Medical Service Transport Time* to Patient Appropriate Trauma Center**



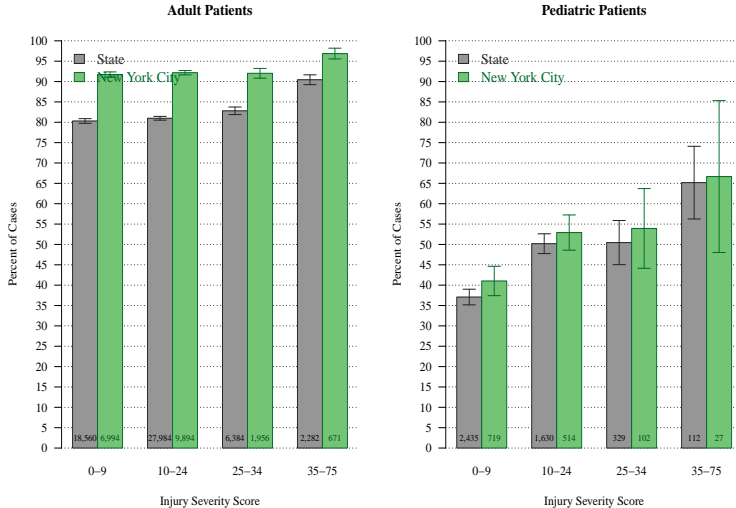
This plot shows the percent of trauma patients transported to an appropriate center within a given time period.

*Transport time is calculated as time from emergency medical service's departure from the scene of injury to arrival at hospital.

**Patient appropriate trauma center means either pediatric or dual designated for patients under 15 and either adult or dual designation for patients over 15 years of age.

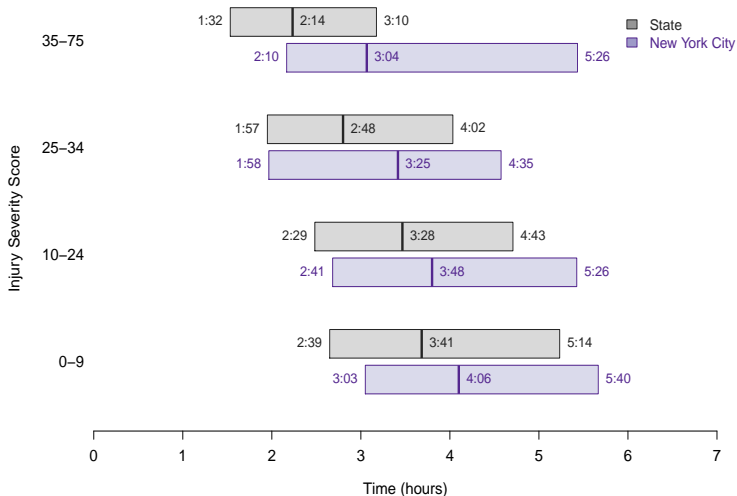


Patients Transported by EMS to an Appropriate Trauma Center by Designation and Injury Severity Score



Registry data only includes data from patients that made it to a Trauma Center. Walk-ins excluded. 95% confidence intervals are shown around means. Appropriate trauma center means either pediatric or dual designated for patients under 15 and either adult or dual designated for patients over 15 years of age.

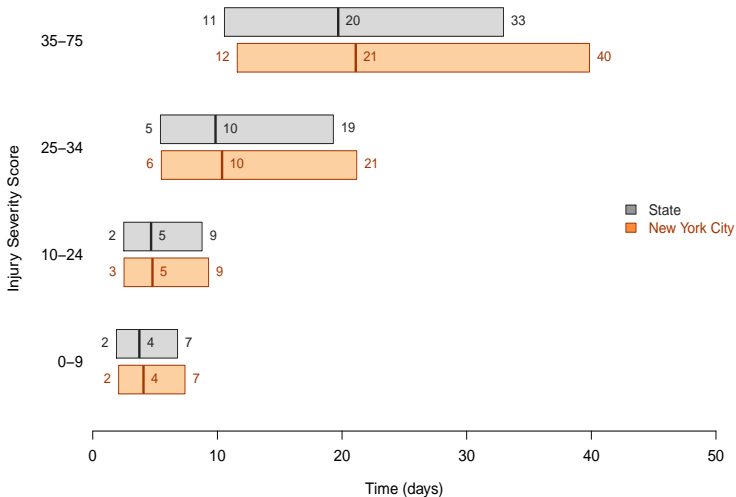
Quartile Plot of Time at Referring Hospital by Injury Severity Score (for patients who were referred to a trauma center)



The quartile plot highlights the middle 50% of patients with the box. The center line denotes the median (the 50th percentile), 25% of patients therefore fall below the range of the box, and 25% fall above the range of the box.



Quartile Plot of Length of Stay by Injury Severity Score (for patients who lived)

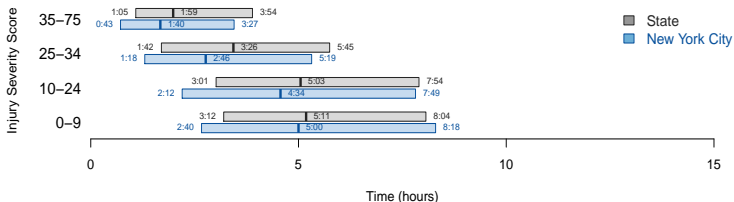


The quartile plot highlights the middle 50% of patients with the box. The center line denotes the median (the 50th percentile), 25% of patients therefore fall below the range of the box, and 25% fall above the range of the box.

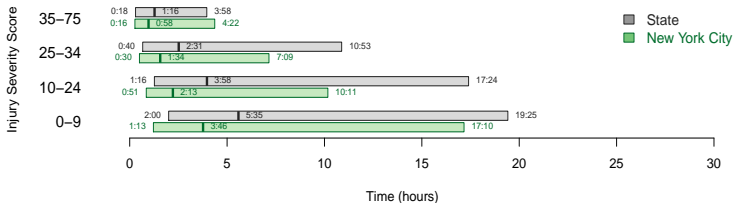
New York City (NYC) Complication Incidence and Mortality

Complications	New York City		Frequency (%)		Fatality Rate (%)	
	Incidents	Fatalities	NYC	State	NYC	State
other unspecified	911	169	3.82	4.31	18.6	18.4
pneumonia	454	76	1.90	2.71	16.7	16.5
acute lung injury	390	101	1.63	2.25	25.9	24.0
new urinary tract infection	355	20	1.49	1.96	5.6	8.2
severe sepsis	206	52	0.86	0.93	25.2	33.3
acute kidney injury	201	51	0.84	0.89	25.4	28.1
withdrawal from alcohol or drugs	175	4	0.73	0.94	2.3	2.8
deep vein thrombosis	130	7	0.54	0.83	5.4	9.5
new decubitus ulcer	103	14	0.43	0.69	13.6	13.4
cardiac arrest in hospital	102	89	0.43	0.88	87.3	82.7
unplanned intubation	81	22	0.34	0.62	27.2	28.9
extremity compartment syndrome	58	3	0.24	0.31	5.2	4.8
pulmonary embolism	48	6	0.20	0.35	12.5	13.5
superficial surgical site infection	48	1	0.20	0.19	2.1	2.3
new myocardial infarction	29	11	0.12	0.24	37.9	33.3
deep surgical site infection	26	4	0.11	0.13	15.4	7.8
new stroke or cerebral vascular accident	24	2	0.10	0.14	8.3	18.6
catheter related blood stream infection	23	4	0.10	0.10	17.4	14.3
unplanned return to ICU	22	3	0.09	0.13	13.6	12.8
organ or space surgical site infection	8	0	0.03	0.11	0.0	4.0
new bone infection	6	0	0.03	0.03	0.0	0.0
failure of graft, flap, or prosthesis	3	0	0.01	0.03	0.0	0.0

Quartile Plot of Time In Emergency Department by Injury Severity Score

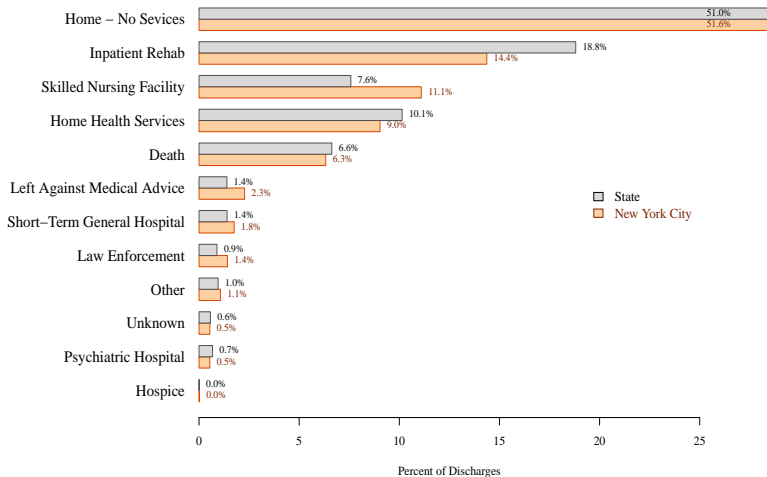


Quartile Plot of Time Until First Procedure by Injury Severity Score



The quartile plot highlights the middle 50% of patients with the box. The center line denotes the median (the 50th percentile), 25% of patients therefore fall below the range of the box, and 25% fall above the range of the box.

Discharge Destination

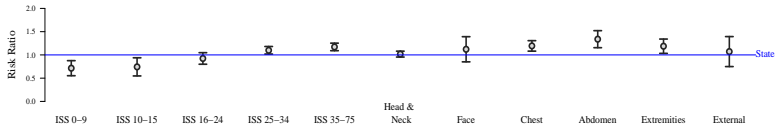


Note that axis margin cuts off full length of discharged to home bar.

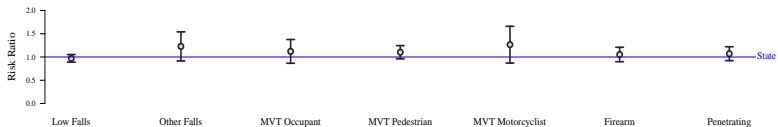
Risk by Patient Characteristics



Risk by Severity and Location of Injury



Risk by Type of Trauma



$$\text{Risk Ratio} = \frac{\text{observed fatality rate}}{\text{expected fatality rate}}$$

Expected rate is estimated using a multivariate logistic regression adjusting for risk factors: age, gender, injury severity, injury body region, injury type, Glasgow coma motor score, systolic blood pressure, mechanism of trauma, prehospital care, and existing comorbidities.

New York City Regional Risk Adjusted Fatality Rates

Categories	New York City Region (NYC)			Comparison*		
	N	Observed	Expected	Risk Ratio	State	NYC
Overall						
All Trauma Cases	19,298	6.1%	6.0%	1.0 ±0.1	6.6%	6.7%
Age						
Children 0-6	593	1.7%	3.2%	0.5 ±0.3	2.3%	1.2%
Children 7-14	589	1.7%	2.4%	0.7 ±0.4	2.1%	1.5%
Adults 15-25	3,251	5.0%	4.3%	1.2 ±0.2	4.7%	5.4%
Adults 26-44	4,343	5.2%	4.4%	1.2 ±0.2	4.6%	5.5%
Adults 45-64	4,237	5.5%	5.2%	1.1 ±0.1	5.5%	5.8%
Adults 65+	5,879	8.9%	9.3%	1.0 ±0.1	10.6%	10.1%
Gender						
Male	13,175	6.2%	6.0%	1.0 ±0.1	6.8%	7.0%
Female	6,123	6.0%	6.0%	1.0 ±0.1	6.2%	6.2%
Race						
White	6,587	7.2%	6.6%	1.1 ±0.1	6.9%	7.4%
Non White	12,711	5.6%	5.6%	1.0 ±0.1	5.9%	5.9%
Primary Payor						
Selfpay	1,754	9.8%	6.1%	1.6 ±0.2	10.0%	16.2%
Medicaid	2,929	4.1%	4.9%	0.8 ±0.1	4.0%	3.4%
Medicare	4,962	8.3%	8.4%	1.0 ±0.1	9.8%	9.7%
Commercial Payer	8,938	5.1%	5.1%	1.0 ±0.1	5.2%	5.2%

State comparison is risk adjusted. N values reflect data available for accurate risk adjustment (not regional totals). Risk ratio quotes a 95% confidence interval.



New York City Regional Risk Adjusted Fatality Rates

Categories	New York City Region (NYC)			Comparison*		
	N	Observed	Expected	Risk Ratio	State	NYC
Injury Severity Score (ISS)						
ISS 0-9	7,218	1.0%	1.4%	0.7 ±0.2	1.8%	1.3%
ISS 10-15	4,368	1.3%	1.7%	0.7 ±0.2	1.8%	1.4%
ISS 16-24	5,313	3.9%	4.2%	0.9 ±0.1	4.3%	4.0%
ISS 25-34	1,819	28.0%	25.4%	1.1 ±0.1	25.2%	27.7%
ISS 35-75	580	58.1%	49.6%	1.2 ±0.1	44.6%	52.3%
Location of Injury						
Head & Neck	9,412	9.5%	9.4%	1.0 ±0.1	10.5%	10.7%
Face	363	15.4%	13.8%	1.1 ±0.3	15.0%	16.8%
Chest	4,001	9.7%	8.2%	1.2 ±0.1	8.6%	10.3%
Abdomen	1,463	12.3%	9.2%	1.3 ±0.2	10.5%	14.1%
Extremities	3,914	5.5%	4.6%	1.2 ±0.2	5.7%	6.7%
External	100	30.0%	28.0%	1.1 ±0.3	33.6%	36.0%
Falls						
Low Falls	7,734	6.6%	6.8%	1.0 ±0.1	8.0%	7.7%
Other Falls	978	5.7%	4.7%	1.2 ±0.3	3.8%	4.7%
Motor Vehical Traffic (MVT)						
MVT Occupant	1,698	4.2%	3.7%	1.1 ±0.3	5.7%	6.4%
MVT Pedestrian	2,329	9.1%	8.3%	1.1 ±0.1	9.9%	10.9%
MVT Motorcyclist	625	5.9%	4.7%	1.3 ±0.4	5.2%	6.6%
Other						
Firearm	1,540	10.3%	9.8%	1.1 ±0.2	12.8%	13.5%
Penetrating	2,386	7.7%	7.2%	1.1 ±0.1	9.1%	9.8%

State comparison is risk adjusted. N values reflect data available for accurate risk adjustment (not regional totals). Risk ratio quotes a 95% confidence interval.



Characteristics of Injury Incidence

Deaths, Hospitalizations, and Emergency Department[†] (ED) Visits NYC Residents, 2010-2012

	Deaths		Hospitalizations		ED Visits	
	Mean Annual Frequency	Rate per 100,000 Residents	Mean Annual Frequency	Rate per 100,000 Residents	Mean Annual Frequency	Rate per 100,000 Residents
Total	2,698	32.4	66,543	798.1	544,207	6,527.1
Age Group						
0<1	57	48.1	542	454.7	6,732	5,644.3
1-4	20	4.5	1,606	367.8	47,857	10,959.7
5-9	9	1.8	1,062	212.3	36,173	7,233.3
10-14	19	4	1,278	271.5	38,373	8,150.3
15-19	111	21.9	2,708	532.3	43,520	8,554.2
20-24	213	34.1	3,559	570.4	51,260	8,215.3
25-44	807	31.2	12,847	497	164,329	6,356.7
45-64	868	42.1	16,794	814.6	108,237	5,250.2
65+	594	57.6	26,146	2,535.1	47,726	4,627.4
Gender						
Male	1,916	48.1	35,488	884.6	291,167	7,307.8
Female	782	18	31,054	712.7	253,031	5,812.3
Unknown	0	n/a	*	n/a	10	n/a
Percent Traumatic Brain Injury	29%		12%		8%	
Mean Charge per Hospitalization or ED Visit	n/a		\$39,299		\$1,514	
Mean One Year Total Hospitalization or ED Visit Charges	n/a		\$2,615,037,540		\$824,029,617	
Three Year Total Hospitalization or ED Visit Charges	n/a		\$7,845,112,620		\$2,472,088,850	
Average Length of Hospital Stay (Days)	n/a		7		n/a	

[†]The incidence of ED visits does not include patients who were subsequently admitted into the hospital
Rate = Frequency / Population * 100,000

*Data based on frequencies less than six not reported

**Caution: Rates calculated using frequencies of less than 20 are unstable

Source: NYSDOH, Bureau of Occupational Health and Injury Prevention
www.health.ny.gov/prevention/injury_prevention/

SPARCS December 2013

Vital Statistics Death File February 2014



Emergency Department (ED)† Visits Due to Injury
 Leading Causes by Age Group
 NYC Trauma Region, New York State Residents, 2010-2012

Rank	Age Group									
	0<1	1-4	5-9	10-14	15-19	20-24	25-44	45-64	65+	Total
1	Fall 3,627 (54%)	Fall 20,413 (43%)	Fall 13,479 (37%)	Fall 10,980 (29%)	Fall 7,526 (17%)	Fall 7,880 (15%)	Fall 30,606 (19%)	Fall 33,150 (31%)	Fall 27,964 (59%)	Fall 155,624 (29%)
2	Struck By, Against 541 (8%)	Struck By, Against 6,584 (14%)	Struck By, Against 6,824 (19%)	Struck By, Against 8,076 (21%)	Struck By, Against 7,238 (17%)	Assault 7,857 (15%)	Assault 18,616 (11%)	Struck By, Against 9,434 (9%)	Unspecified 3,503 (7%)	Struck By, Against 64,241 (12%)
3	Unspecified 420 (6%)	Natural / Environmental 4,472 (9%)	Natural / Environmental 2,756 (8%)	Overexertion 3,280 (9%)	Assault 6,770 (16%)	Struck By, Against 5,750 (11%)	Struck By, Against 17,009 (10%)	Unspecified 9,329 (9%)	Struck By, Against 2,785 (6%)	Assault 45,249 (8%)
4	Natural / Environmental 393 (6%)	Unspecified 2,657 (6%)	Unspecified 1,960 (5%)	Assault 2,835 (7%)	Overexertion 4,348 (10%)	Cut / Pierce 5,033 (10%)	Cut / Pierce 16,495 (10%)	Overexertion 9,043 (8%)	Cut / Pierce 1,959 (4%)	Overexertion 40,749 (7%)
5	Hot Object / Scald 204 (3%)	Cut / Pierce 1,632 (3%)	Cut / Pierce 1,711 (5%)	Unspecified 2,261 (6%)	Cut / Pierce 2,982 (7%)	MVT*, Occupant 4,573 (9%)	Overexertion 15,554 (9%)	Cut / Pierce 8,289 (8%)	MVT*, Occupant 1,876 (4%)	Cut / Pierce 40,110 (7%)
6	MVT*, Occupant 169 (3%)	Overexertion 1,371 (3%)	Overexertion 1,209 (3%)	Cut / Pierce 1,871 (5%)	Unspecified 2,775 (6%)	Overexertion 4,043 (8%)	MVT*, Occupant 14,478 (9%)	MVT*, Occupant 8,140 (8%)	Overexertion 1,791 (4%)	Unspecified 39,731 (7%)
7	Cut / Pierce 138 (2%)	Poisoning 1,231 (3%)	MVT*, Occupant 958 (3%)	Environmental 1,509 (4%)	MVT*, Occupant 2,058 (5%)	Unspecified 3,691 (7%)	Unspecified 13,135 (8%)	Assault 7,327 (7%)	Natural / Environmental 1,152 (2%)	MVT*, Occupant 33,873 (6%)
8	Poisoning 136 (2%)	Hot Object / Scald 942 (2%)	Assault 743 (2%)	MVT*, Occupant 924 (2%)	Natural / Environmental 1,511 (3%)	Natural / Environmental 1,985 (4%)	Natural / Environmental 5,339 (3%)	Natural / Environmental 3,616 (3%)	Assault 748 (2%)	Natural / Environmental 22,733 (4%)
9	Overexertion 109 (2%)	MVT*, Occupant 697 (1%)	Pedal Cyclist, Non-Traffic 582 (2%)	MVT*, Pedestrian 655 (2%)	MVT*, Pedestrian 736 (2%)	MVT*, Pedestrian 857 (2%)	MVT*, Pedestrian 2,445 (1%)	MVT*, Pedestrian 1,900 (2%)	MVT*, Pedestrian 716 (1%)	MVT*, Pedestrian 7,853 (1%)
10	Suffocation 89 (1%)	Suffocation 367 (1%)	Hot Object / Scald 416 (1%)	Pedal Cyclist, Non-Traffic 595 (2%)	Pedal Cyclist, Non-Traffic 510 (1%)	Hot Object / Scald 584 (1%)	Hot Object / Scald 1,770 (1%)	Hot Object / Scald 1,121 (1%)	Poisoning 358 (1%)	Hot Object / Scald 5,903 (1%)

Yearly Average (percent of age group)

MVT* = Motor Vehicle Traffic

*Data based on three year total frequencies of less than six are not reportable

	Intentional Injury
	Unintentional Injury

Source: NYSDOH, Bureau of Occupational Health and Injury Prevention

www.health.ny.gov/injury/

STATISTICAL YEAR 2013

NYSDOH

STATISTICAL YEAR 2013

NYSDOH

STATISTICAL YEAR 2013

NYSDOH

Hospitalizations Due to Injury
Leading Causes by Age Group
NYC Trauma Region, New York State Residents, 2010-2012

Rank	Age Group									
	0<1	1-4	5-9	10-14	15-19	20-24	25-44	45-64	65+	Total
1	Fall 226 (42%)	Fall 491 (31%)	Fall 457 (43%)	Fall 369 (29%)	Assault 830 (31%)	Assault 1,083 (30%)	Fall 2,589 (20%)	Fall 6,052 (36%)	Fall 18,233 (70%)	Fall 29,202 (44%)
2	Hot Object / Scald 83 (15%)	Hot Object / Scald 284 (18%)	MVT ^a , Pedestrian 86 (8%)	MVT ^a , Pedestrian 135 (11%)	Self-inflicted 423 (16%)	Fall 450 (13%)	Assault 2,279 (18%)	Poisoning 2,114 (13%)	Unspecified 1,756 (7%)	Assault 5,027 (8%)
3	Unspecified 40 (7%)	Poisoning 181 (11%)	Natural / Environmental 84 (8%)	Assault 124 (10%)	Fall 335 (12%)	Self-inflicted 444 (12%)	Self-inflicted 1,280 (10%)	Unspecified 1,194 (7%)	Poisoning 832 (3%)	Poisoning 4,760 (7%)
4	Assault 34 (6%)	Natural / Environmental 158 (10%)	Hot Object / Scald 64 (6%)	Self-inflicted 100 (8%)	MVT ^a , Occupant 122 (4%)	MVT ^a , Occupant 243 (7%)	Poisoning 1,243 (10%)	Assault 1,053 (6%)	Natural / Environmental 465 (2%)	Unspecified 3,942 (6%)
5	Poisoning 25 (5%)	Struck By, Against 62 (4%)	Struck By, Against 59 (6%)	Struck By, Against 99 (8%)	Struck By, Against 121 (4%)	Poisoning 181 (5%)	Unspecified 656 (5%)	Self-inflicted 872 (5%)	MVT ^a , Pedestrian 434 (2%)	Self-inflicted 3,351 (5%)
6	Suffocation 21 (4%)	Unspecified 51 (3%)	Poisoning 35 (3%)	Environmental 58 (5%)	MVT ^a , Pedestrian 117 (4%)	MVT ^a , Pedestrian 135 (4%)	MVT ^a , Occupant 597 (5%)	MVT ^a , Pedestrian 589 (4%)	MVT ^a , Occupant 331 (1%)	MVT ^a , Pedestrian 1,978 (3%)
7	Natural / Environmental 19 (4%)	MVT ^a , Pedestrian 34 (2%)	Unspecified 32 (3%)	Poisoning 42 (3%)	Poisoning 108 (4%)	Unspecified 105 (3%)	MVT ^a , Pedestrian 446 (3%)	Environmental 503 (3%)	Struck By, Against 277 (1%)	MVT ^a , Occupant 1,807 (3%)
8	Struck By, Against 13 (2%)	Suffocation 28 (2%)	Cut / Pierce 27 (3%)	Unspecified 41 (3%)	Environmental 74 (3%)	MVT ^a , Motorcyclist 93 (3%)	Environmental 396 (3%)	MVT ^a , Occupant 465 (3%)	Suffocation 243 (1%)	Struck By, Against 1,341 (2%)
9	Fire / Flame 5 (1%)	Assault 23 (1%)	Pedal Cyclist, Non-Traffic 26 (2%)	Pedal Cyclist, Non-Traffic 39 (3%)	Unspecified 67 (2%)	Environmental 88 (2%)	Struck By, Against 315 (2%)	Struck By, Against 309 (2%)	Self-inflicted 223 (1%)	Hot Object / Scald 1,066 (2%)
10	Drowning / Submersion 4 (1%)	Cut / Pierce 23 (1%)	MVT ^a , Occupant 18 (2%)	Cut / Pierce 28 (2%)	Cut / Pierce 62 (2%)	Struck By, Against 87 (2%)	Cut / Pierce 268 (2%)	Cut / Pierce 233 (1%)	Assault 186 (1%)	Cut / Pierce 796 (1%)

Yearly Average (percent of age group)

MVT^a = Motor Vehicle Traffic

^aData based on three year total frequencies of less than six are not reportable

	Intentional Injury
	Unintentional Injury

Source: NYSDOH, Bureau of Occupational Health and Injury Prevention

www.health.ny.gov/publications

STATISTICAL CENTER
NEW YORK CITY

Vital Statistics Deaths 2010-2013

Injury Related Deaths
Leading Causes by Age Group
NYC Trauma Region, New York State Residents, 2010-2012

Rank	Age Group									
	0<1	1-4	5-9	10-14	15-19	20-24	25-44	45-64	65+	Total
1	Suffocation 12 (22%)	Homicide 8 (41%)	Homicide 3 (37%)	Suicide 4 (21%)	Homicide 61 (55%)	Homicide 93 (44%)	Poisoning 238 (30%)	Poisoning 309 (36%)	Fall 279 (47%)	Poisoning 606 (22%)
2	Homicide 10 (17%)	MVT ^a , Pedestrian 3 (14%)	*	Homicide 4 (19%)	Suicide 18 (16%)	Suicide 33 (16%)	Homicide 208 (26%)	Suicide 192 (22%)	Suicide 75 (13%)	Suicide 485 (18%)
3	*	*	*	MVT ^a , Pedestrian 3 (18%)	Poisoning 7 (6%)	Poisoning 28 (13%)	Suicide 162 (20%)	Homicide 74 (9%)	MVT ^a , Pedestrian 54 (9%)	Homicide 481 (18%)
4	*	*	*	*	MVT ^a , Unspecified 5 (4%)	MVT ^a , Unspecified 10 (5%)	MVT ^a , Pedestrian 31 (4%)	Fall 66 (8%)	Fire / Flame 24 (4%)	Fall 380 (14%)
5	*	*	*	*	MVT ^a , Pedestrian 4 (4%)	MVT ^a , Pedestrian 7 (3%)	Fall 26 (3%)	MVT ^a , Pedestrian 43 (5%)	Poisoning 22 (4%)	MVT ^a , Pedestrian 146 (5%)
6	*	*	*	*	MVT ^a , Occupant 3 (3%)	Fall 5 (3%)	MVT ^a , Motorcyclist 22 (3%)	Natural / Environmental 14 (2%)	Homicide 20 (3%)	MVT ^a , Unspecified 55 (2%)
7		*	*	*	MVT ^a , Pedal Cyclist 2 (2%)	MVT ^a , Motorcyclist 4 (2%)	MVT ^a , Unspecified 13 (2%)	Fire / Flame 14 (2%)	Natural / Environmental 14 (2%)	Fire / Flame 48 (2%)
8		*	*	*	*	MVT ^a , Occupant 4 (2%)	MVT ^a , Occupant 9 (1%)	MVT ^a , Unspecified 14 (2%)	Unspecified 14 (2%)	Suffocation 45 (2%)
9				*	*	MVT ^a , Pedal Cyclist 3 (1%)	Fire / Flame 6 (1%)	Suffocation 13 (1%)	Suffocation 11 (2%)	Natural / Environmental 36 (1%)
10				*	*	Pedestrian, Non-Traffic 2 (1%)	Suffocation 5 (1%)	MVT ^a , Occupant 8 (1%)	MVT ^a , Unspecified 11 (2%)	MVT ^a , Occupant 34 (1%)

Yearly Average (percent of age group)

MVT^a = Motor Vehicle Traffic

*Data based on three year total frequencies of less than six are not reportable

Intentional Injury
Unintentional Injury

Source: NYSDOH, Bureau of Occupational Health and Injury Prevention

www.health.ny.gov/injury/NEW YORK STATE
Vital Statistics Deaths 2010-2012