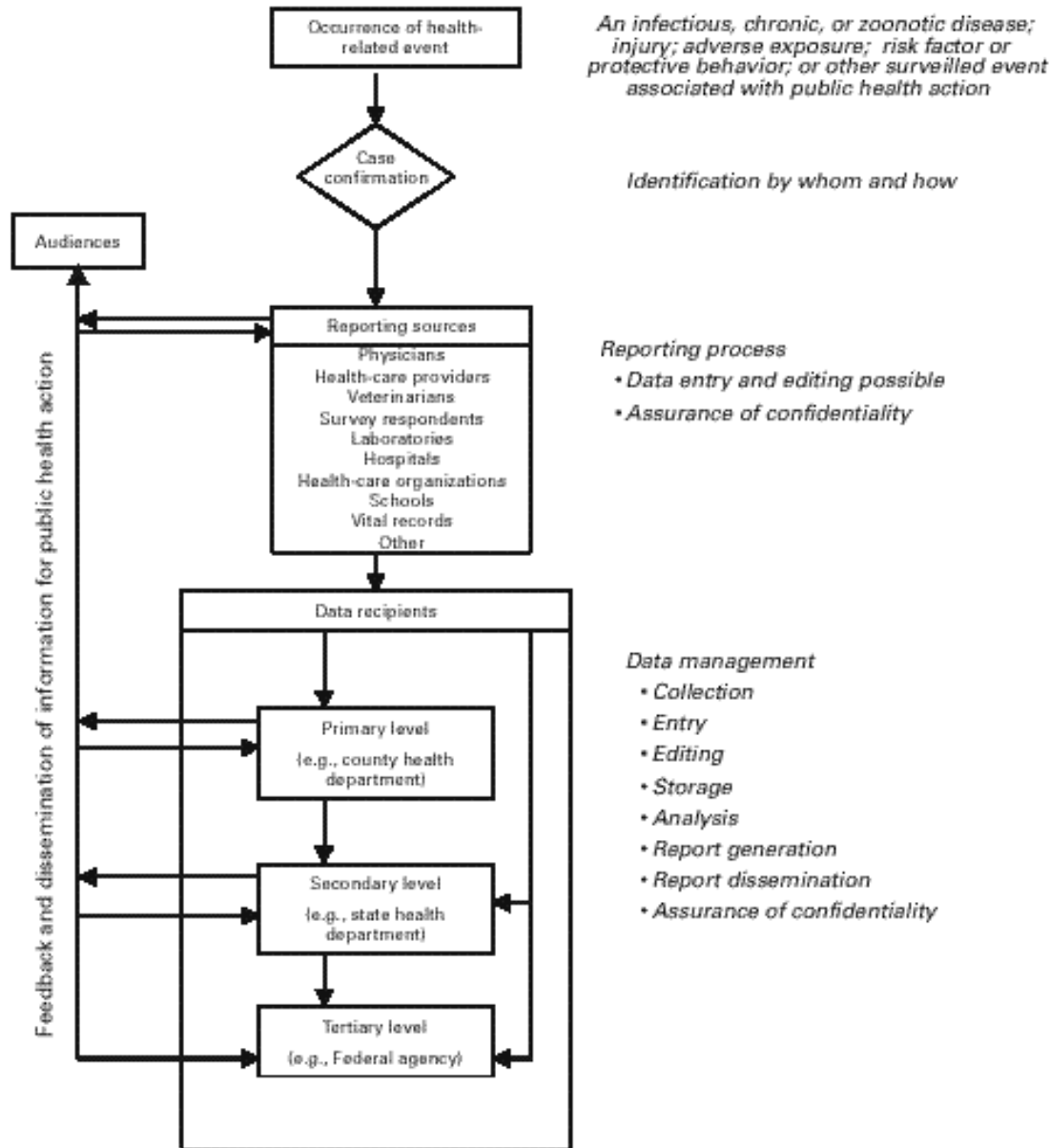
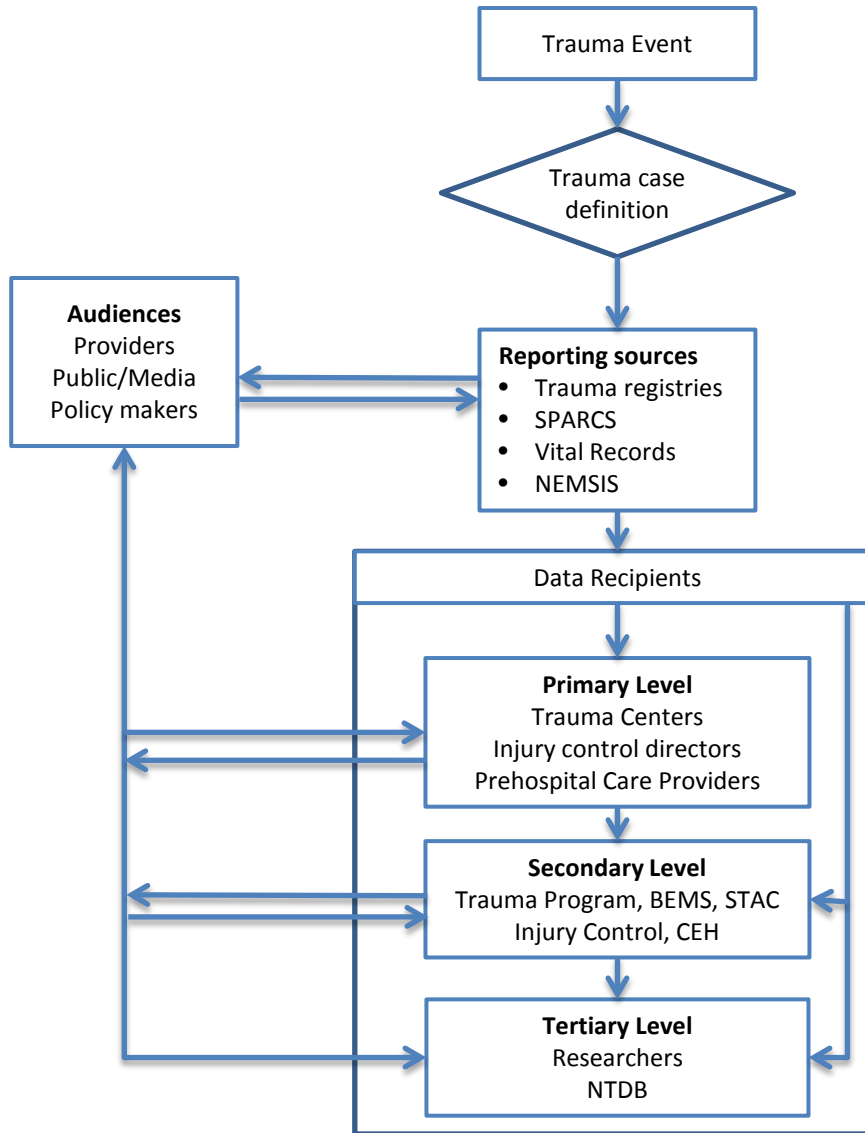


FIGURE 1. Simplified flow chart for a generic surveillance system



Simplified flow chart of Trauma Registry System



Registry Standards

Data

- Completeness
 - Case ascertainment (sensitivity)
 - Unknown or nonspecific data values
- Quality
 - Reliability of data elements
 - Specificity
- Timeliness

Performance

- Simplicity
- Flexibility
- Acceptability
- Representativeness
- Stability

Trauma Registry



Linkage between TR and SPARCS

2010-2012 Analytic Dataset

- Trauma data in NTDB layout
- Injury related inpatient and ED discharges from SPARCS

SPARCS Inpatient

SPARCS ED

- Documentation of analytic dataset
- Release process for research use of data

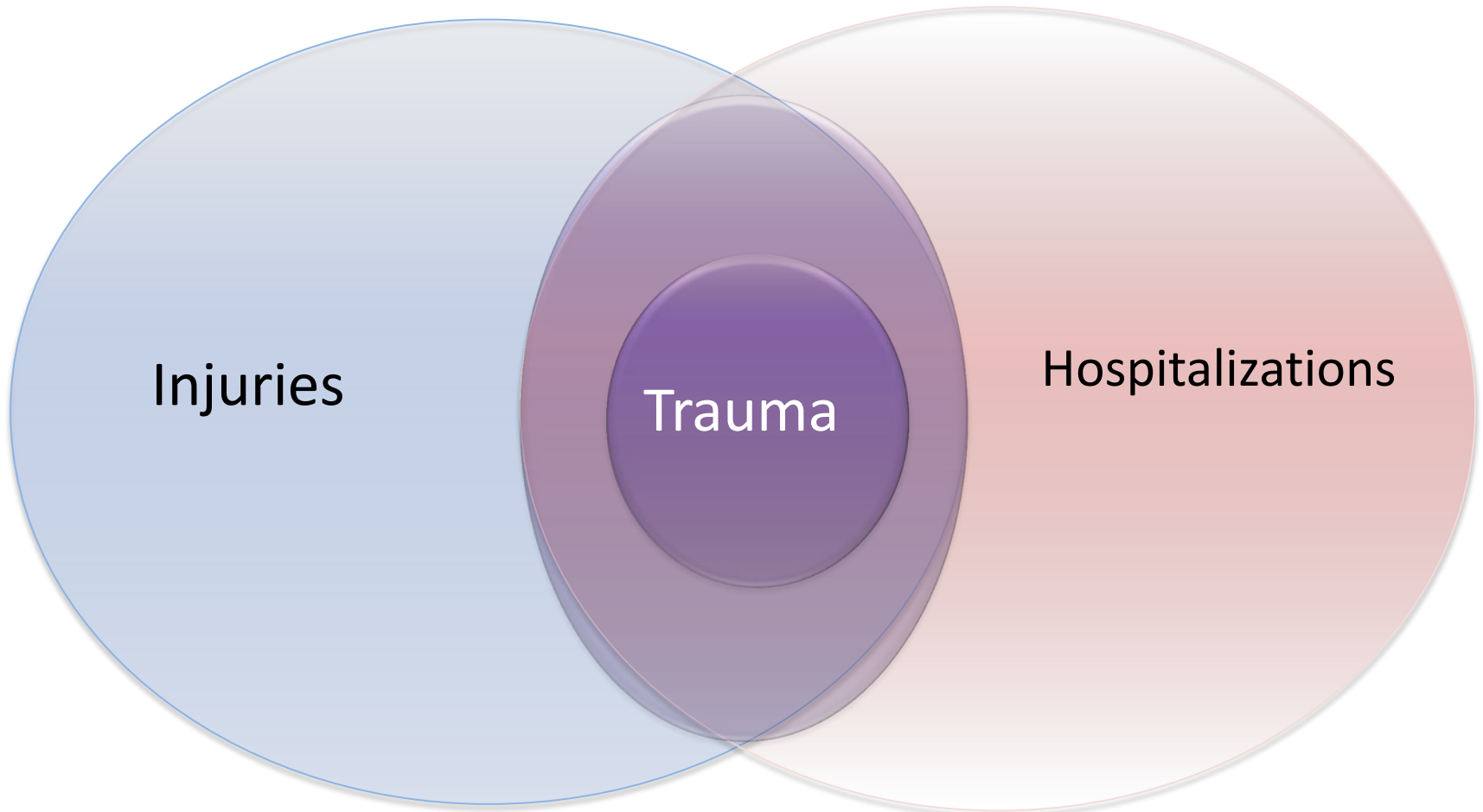
- Annual Report
- Support for quality improvement

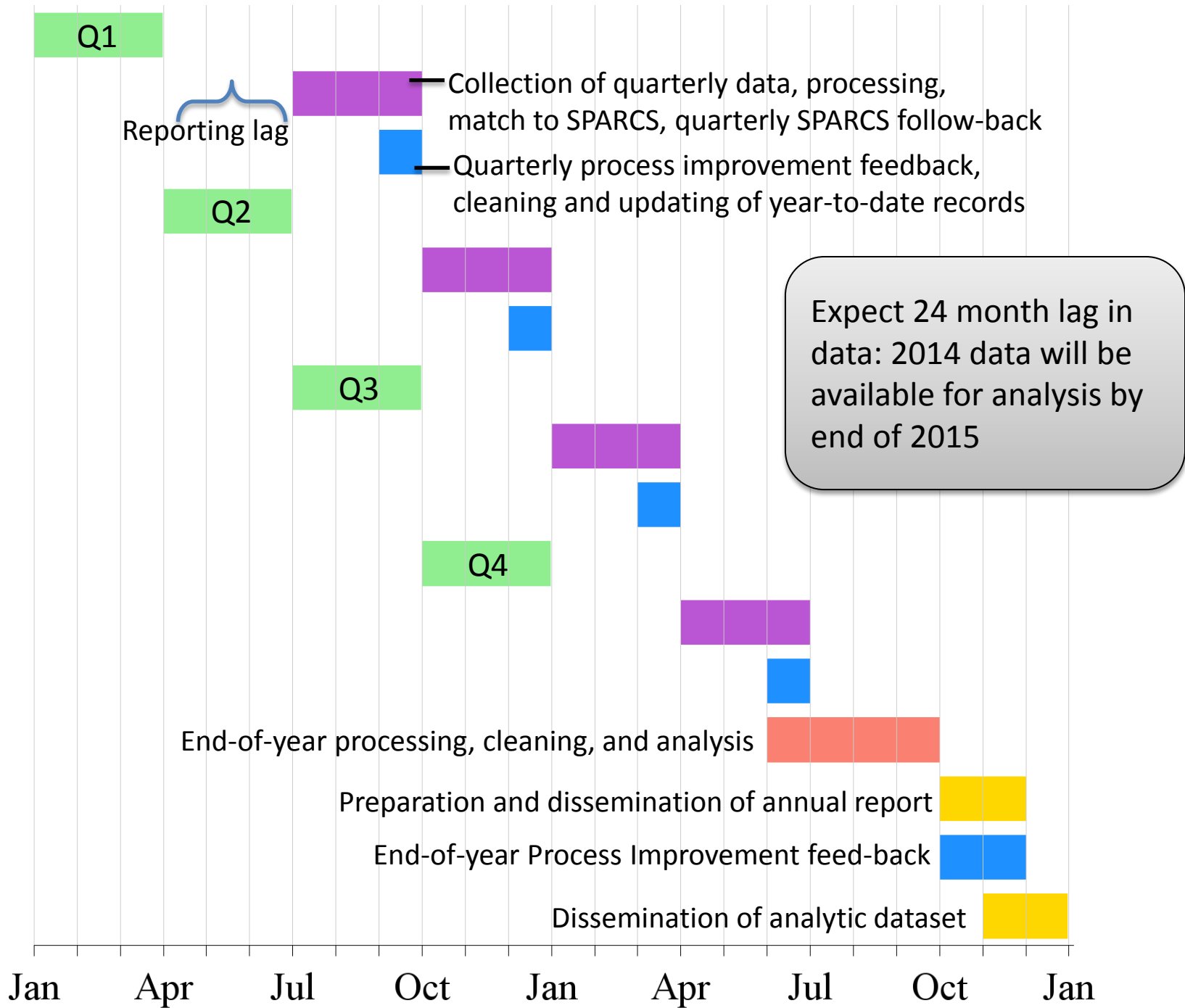
DRAFT

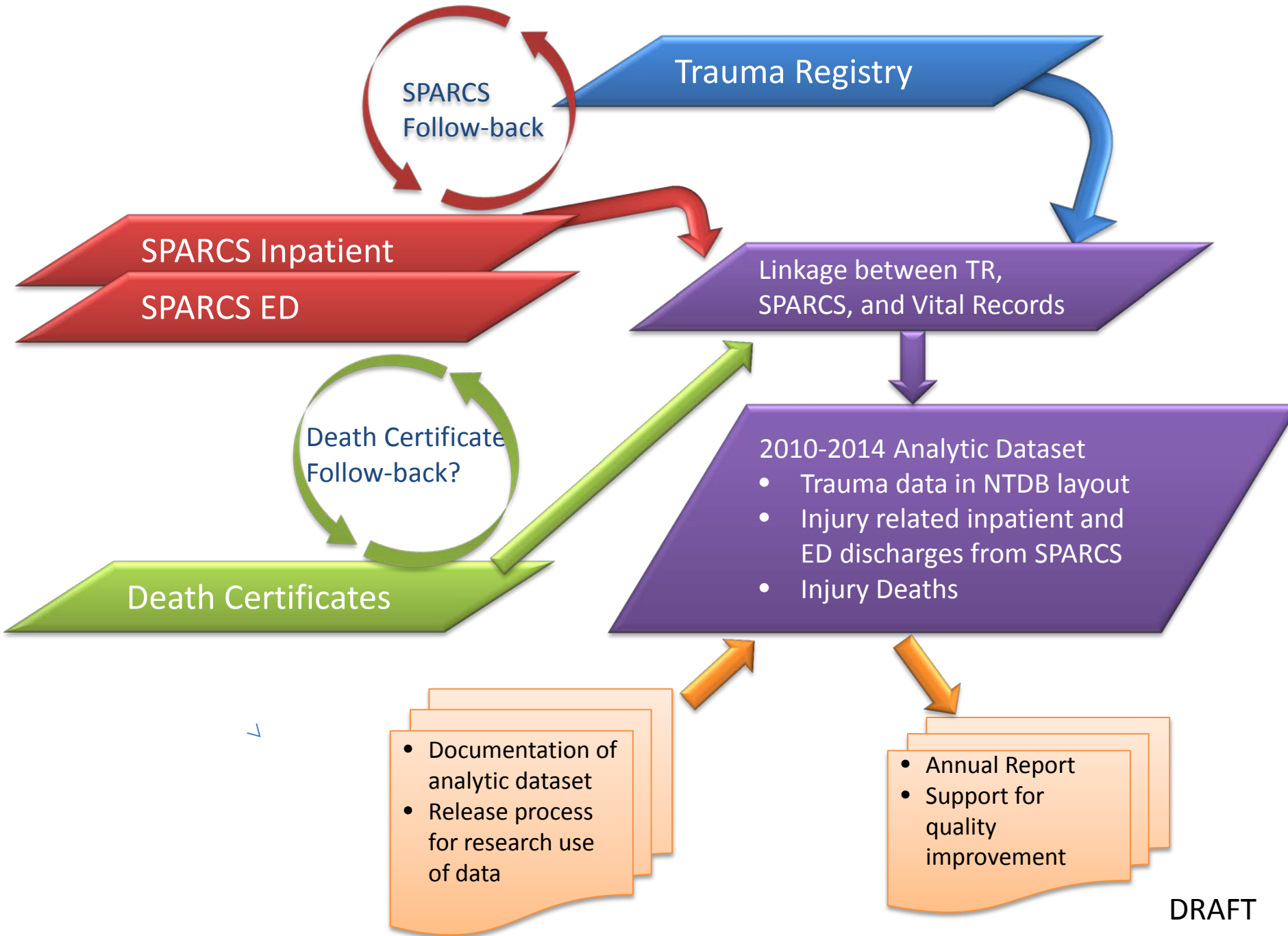
2010-2012 Analytic Dataset

- Trauma data in NTDB layout
- Injury related inpatient and ED discharges from SPARCS

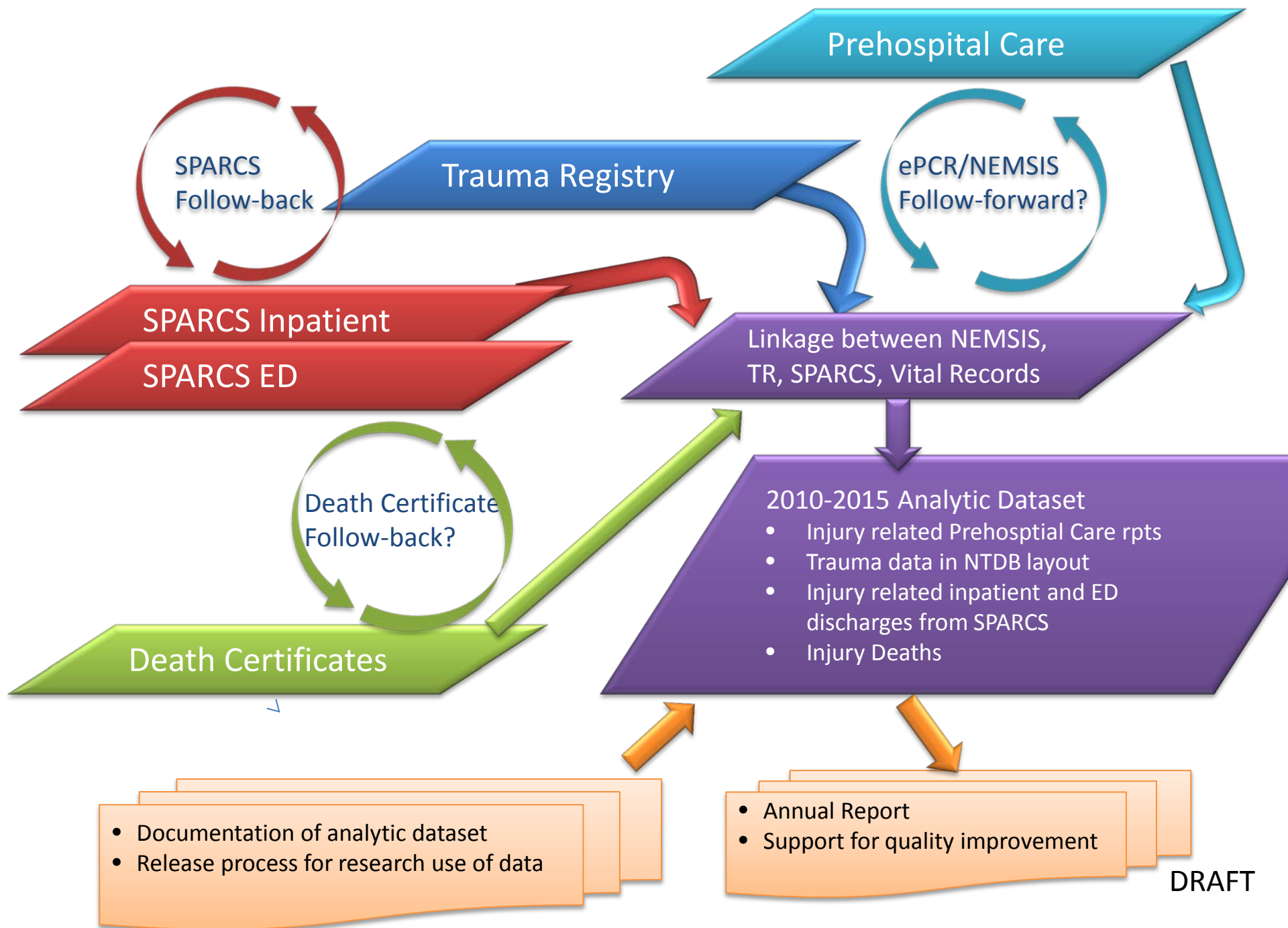
Goal: Compile
Combined Trauma
Registry and SPARCS
Injury dataset

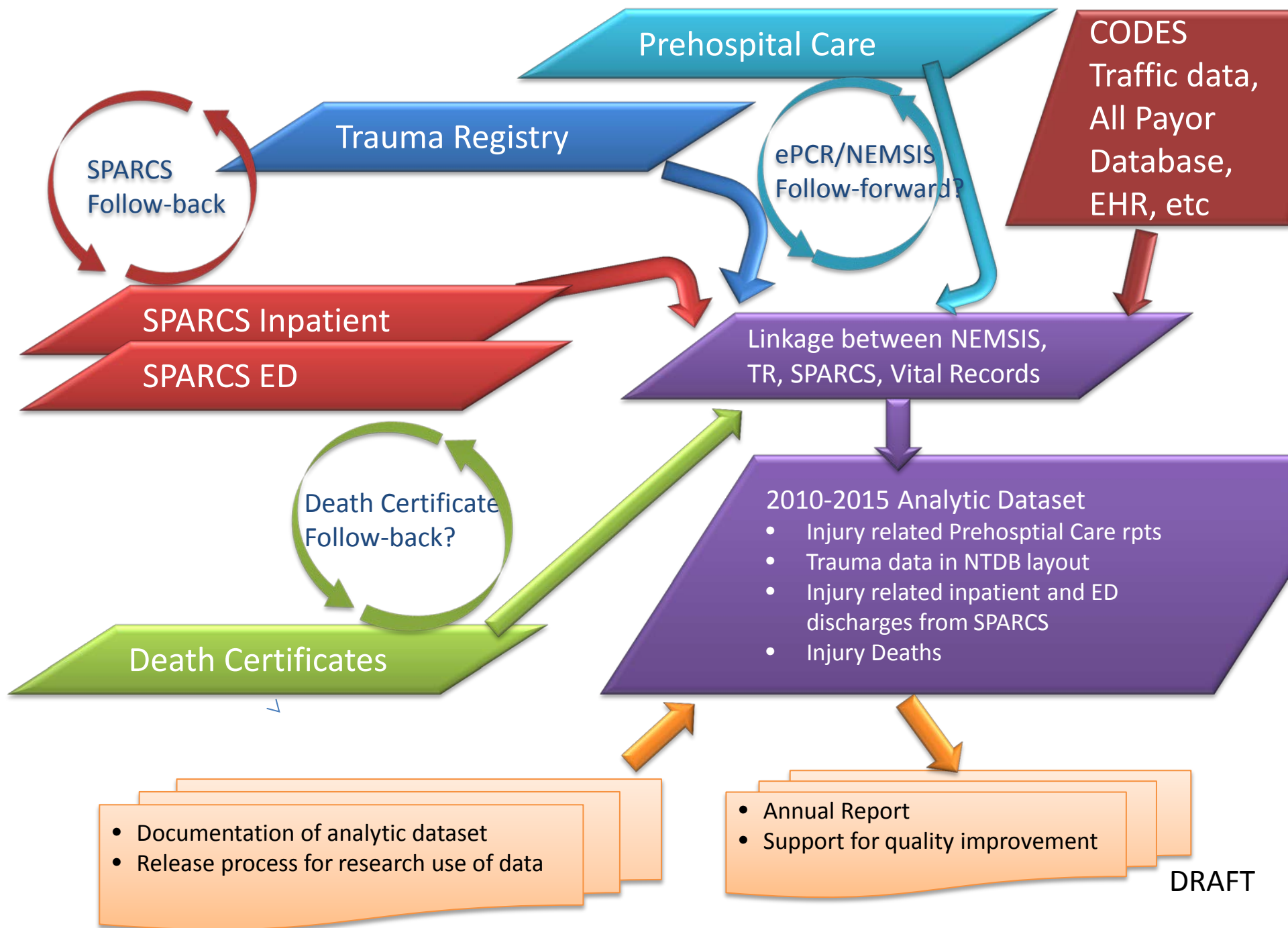




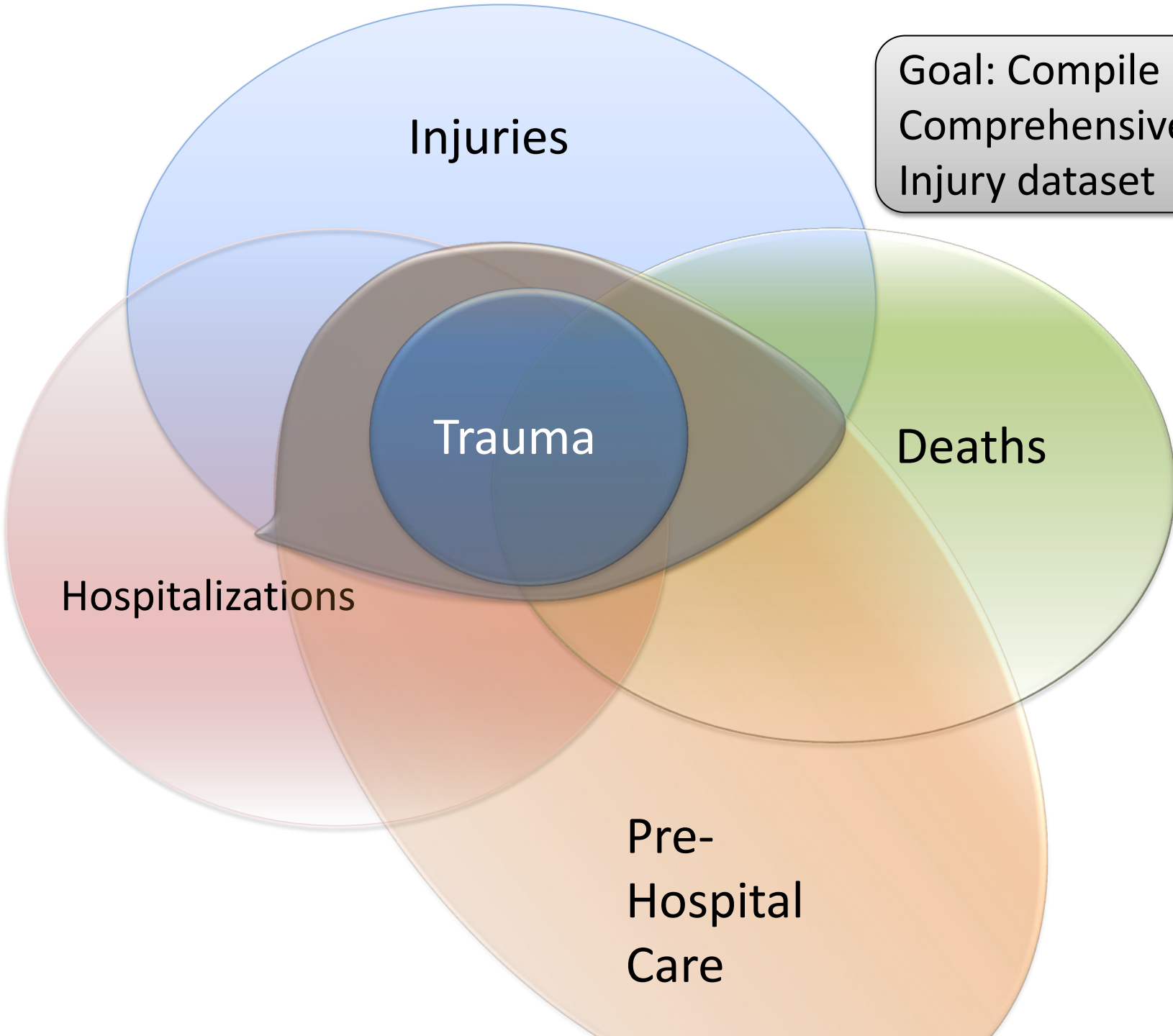


DRAFT





Goal: Compile
Comprehensive
Injury dataset



Injuries

Trauma

Deaths

Hospitalizations

Pre-
Hospital
Care