



Department  
of Health

Medicaid  
Redesign Team

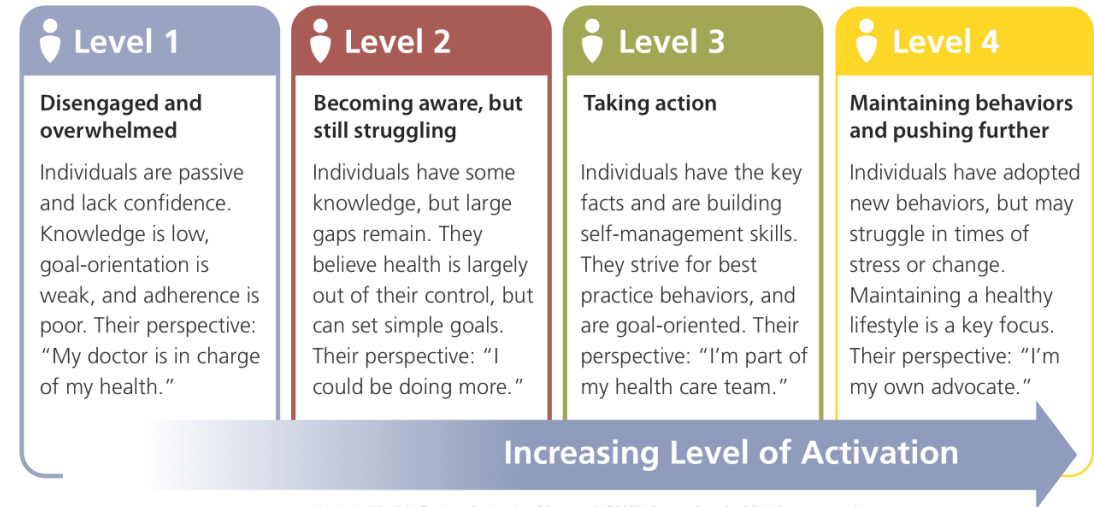
# PAM Program Update: Project 2.d.i

September 11, 2017

# PAM Overview

## Patient Activation Measure (PAM) (NQF 2483) (P4R DY2, P4P DY3-DY5)

- PAM is a 10-question survey that identifies where an individual falls within four different levels of activation.
  - This gives providers and health coaches insight to more effectively support each individual.
- Each point increase in PAM score correlates to a 2% decrease in likelihood of hospitalization, and a 2% increase in likely medication adherence.



©2016 Insignia Health. Patient Activation Measure® (PAM®) Survey Levels. All rights reserved.

### PAM Population:

#### Uninsured

An uninsured individual is not enrolled in Medicaid and does not have commercial insurance or any other comprehensive insurance coverage at the time the PAM survey is administered.

#### Non-Utilizer (NU)

A non-utilizer is a Medicaid member with continuous enrollment for the previous 12 months without a gap in enrollment greater than three months, who has no claims for qualifying services (primary care, specialist care, care received in an emergency department, or an inpatient hospital admission).

#### Low Utilizer (LU)

A low utilizer is an individual enrolled in Medicaid for the previous 12 months with no more than a three-month gap in continuous enrollment and one of the following:

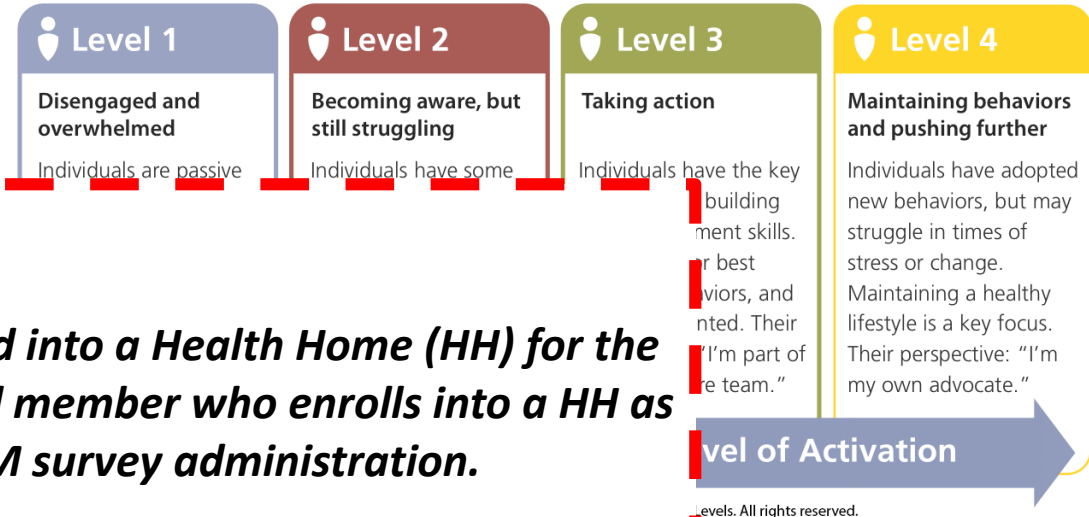
- Has two or more chronic conditions and has received no PCP visits in the previous 24 months;
- Has received services from his/her primary care physician two or fewer times in the previous 12 months;
- Has received three or fewer qualifying medical services in the previous 12 months, including primary care, specialist care, emergency room care or an inpatient hospital admission; or
- Has only received emergency room, inpatient hospital services, eye care, and/or dental services in the previous 12 months.

Individuals cannot be considered low utilizers if either of the two following conditions applies

- The individual has received services for developmental disabilities (i.e. birth defects), nursing home care, or ongoing behavioral health care; or
- The member has consented to and is enrolled in a Health Home.

# PAM Overview

## Patient Activation Measure (PAM) (P4R DY2, P4P DY3-DY5)



- PAM within
- Each likely adhe

***A Low Utilizer, by definition, cannot already be enrolled into a Health Home (HH) for the initial PAM survey administration; however, a Medicaid member who enrolls into a HH as a result of PPS efforts remains eligible for PAM survey administration.***

An uninsured individual is not enrolled in Medicaid and does not have commercial insurance or any other comprehensive insurance coverage at the time the PAM survey is administered.

### Non-Utilizer (NU)

A non-utilizer is a Medicaid member with continuous enrollment for the previous 12 months without a gap in enrollment greater than three months, who has no claims for qualifying services (primary care, specialist care, care received in an emergency department, or an inpatient hospital admission).

A low utilizer is an individual enrolled in Medicaid for the previous 12 months with no more than a three-month gap in continuous enrollment and one of the following:

- Has two or more chronic conditions and has received no PCP visits in the previous 24 months;
- Has received services from his/her primary care physician two or fewer times in the previous 12 months;
- Has received three or fewer qualifying medical services in the previous 12 months, including primary care, specialist care, emergency room care or an inpatient hospital admission; or
- Has only received emergency room, inpatient hospital services, eye care, and/or dental services in the previous 12 months.

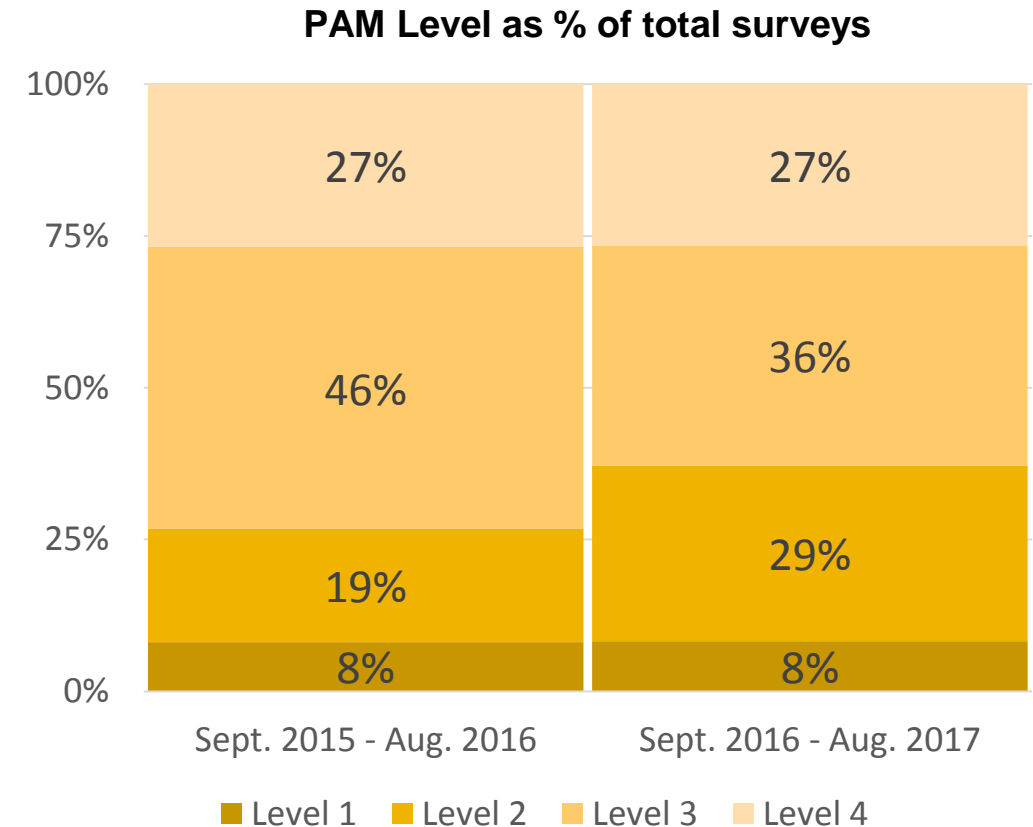
Individuals cannot be considered low utilizers if either of the two following conditions applies

- The individual has received services for developmental disabilities (i.e. birth defects), nursing home care, or ongoing behavioral health care, or
- **The member has consented to and is enrolled in a Health Home.**

# PAM Program Snapshot

Since the inception of DSRIP, Project 2.d.i. PPS have completed 400,000+ PAM surveys. Nearly 235,000 surveys were completed in the past year, or ~20,000 per month.

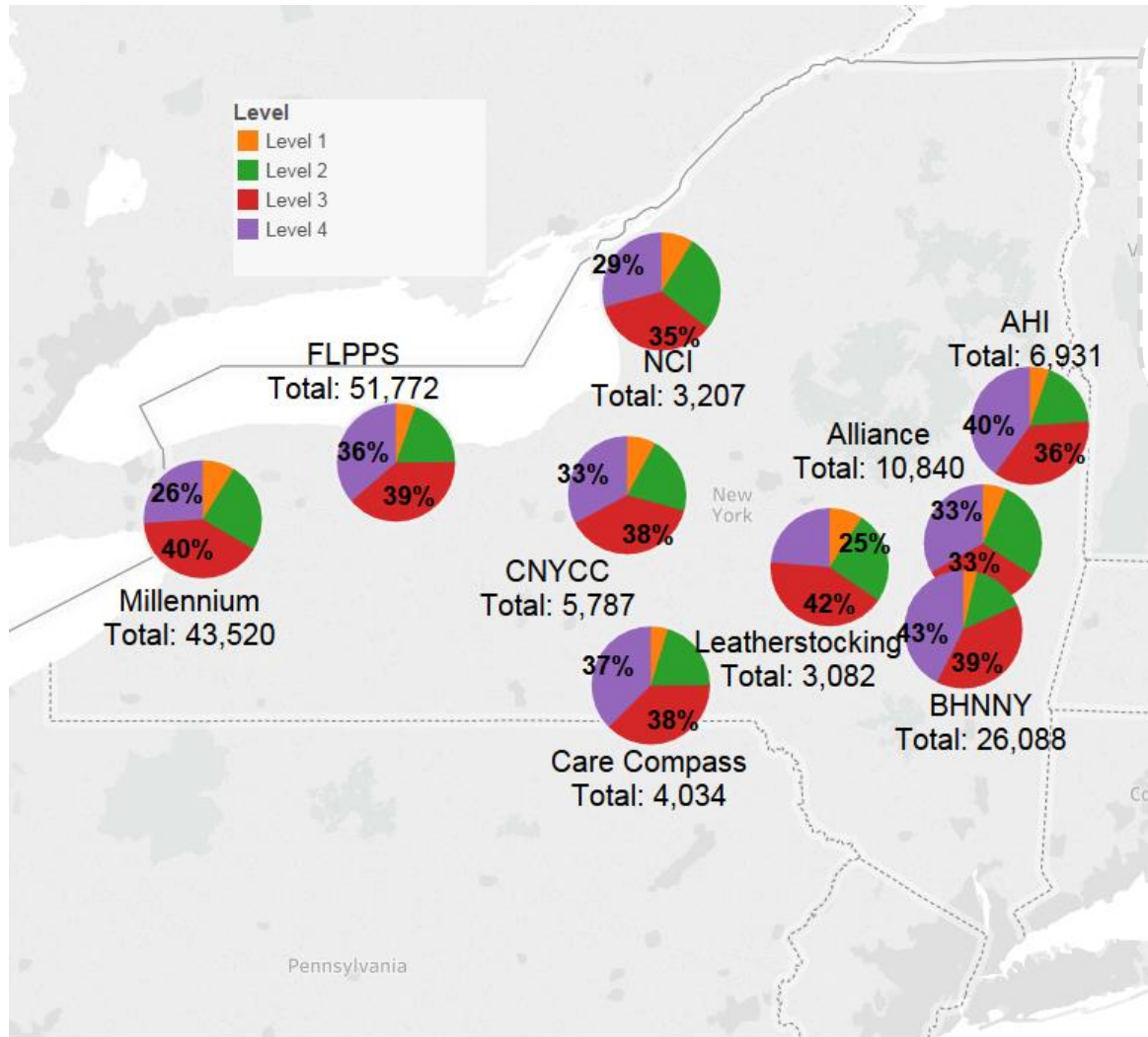
	# of PAMs		% of Total	
	Sept. 2015 - Aug. 2016	Sept. 2016 - Aug. 2017	Sept. 2015 - Aug. 2016	Sept. 2016 - Aug. 2017
<b>Level 1</b>	14,266	19,366	8%	8%
<b>Level 2</b>	33,039	67,814	19%	29%
<b>Level 3</b>	82,062	84,967	46%	36%
<b>Level 4</b>	47,431	62,514	27%	27%
<b>Total</b>	176,798	234,661	100%	100%



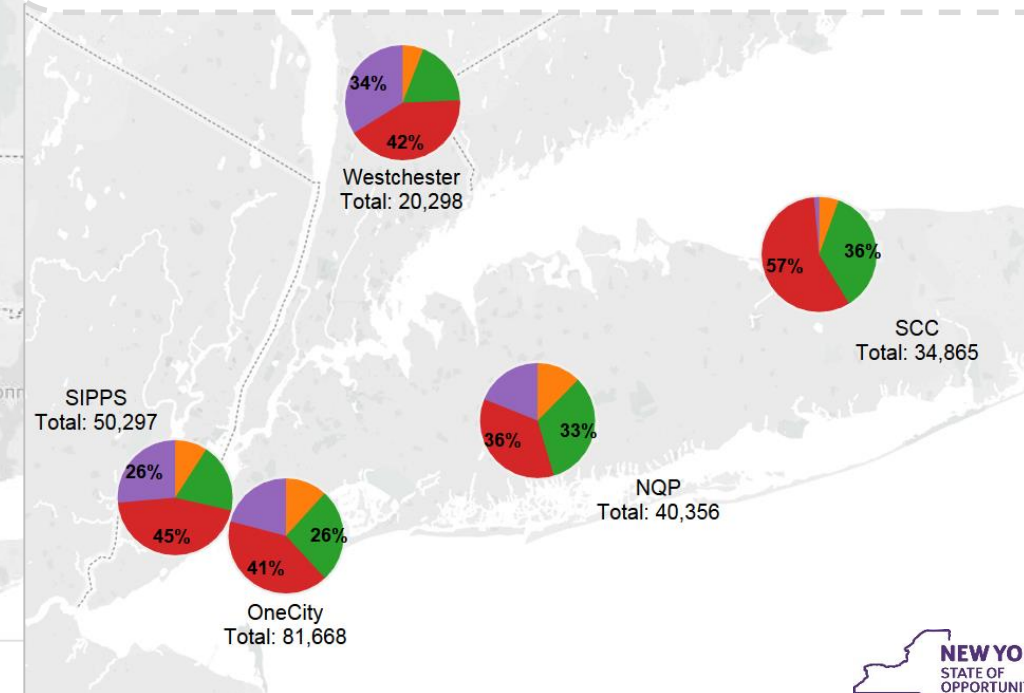
## Key Findings

- The number of level 1 and 4 PAM scores as a percent of the total surveys remained constant over the past year (and grew in absolute terms).
- The percent of level 2 PAM scores decreased by 10% while the percent of level 3 PAM scores increased by 10% in the past year.
- PAM Performance Data will be submitted for the first time with DY3Q2 reports.

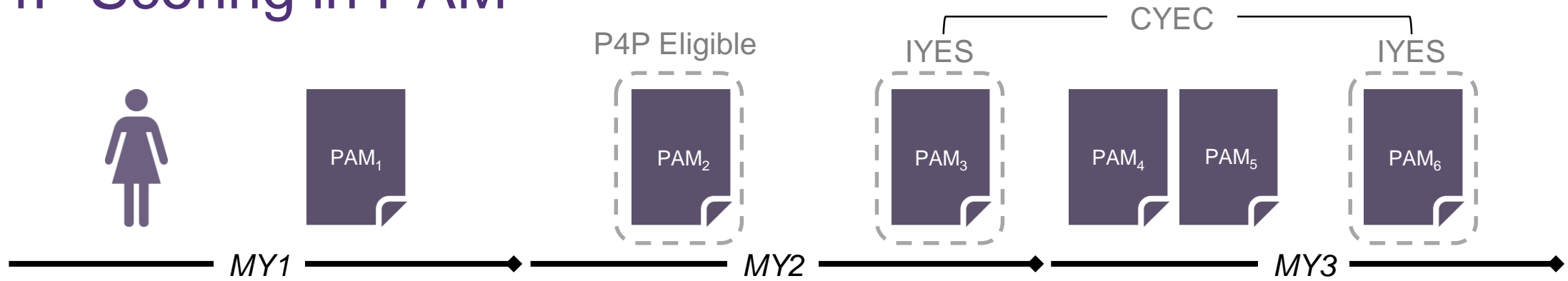
# PAM Level Trends by Region



- SCC has the smallest percentage of level 4 PAM surveys, at 0.01% of total
- OneCity and NQP have the greatest percentage of level 1 PAM surveys, at 12% of the total
- SCC had the greatest increase in administered PAM surveys since 2016 (~370% increase)
- 11 of 14 PPS have a plurality of surveys at level 3, and 3 of 14 have a plurality of surveys at level 4



# P4P Scoring in PAM



Term	Definition (P4R Years)	Definition (P4P Years)
<b>Eligible</b>	Individuals who have received <b>at least one</b> PAM and <b>were not at level 4</b> on their first assessment	Individuals who have received <b>at least two</b> PAMs and <b>were not at level 4</b> on their first assessment
<b>Individual Year End Score (IYES)</b>	For eligible individuals, the PAM score from the most recently administered survey within the measurement year (MY)	
<b>Cohorts A-E Assignment</b>	Cohort A = individuals who receive first PAM assessment during MY1 Cohort B = individuals who receive first PAM assessment during MY2 Cohort C = individuals who receive first PAM assessment during MY3 Cohort D = individuals who receive first PAM assessment during MY4 Cohort E = individuals who receive first PAM assessment during MY5	
<b>Cohort Year End Score (CYES)</b>	Mean of all eligible IYES within the cohort	
<b>Cohort Year End Change (CYEC)</b>	N/A	$CYES_{(current\ MY)} - CYES_{(previous\ MY)}$

# P4P Eligible PAM Data by PPS

	MY2				MY3				MY4				Total # of PAM Surveyed Individuals
	1st PAM		2nd PAM		1st PAM		2nd PAM		1st PAM		2nd PAM		
	# of Individuals	Average PAM Score	# of Individuals	Average PAM Score	# of Individuals	Average PAM Score	# of Individuals	Average PAM Score	# of Individuals	Average PAM Score	# of Individuals	Average PAM Score	
<b>PPS:</b>													
<b>One City</b>	34,938	61.8	361	62.3	43,535	61.1	2,419	59.8	2,902	64.7	105	62.8	81,375
<b>FLPPS</b>	13,853	68.2	314	64.2	34,344	69.5	1,717	66.4	5,743	69.8	382	64.9	53,940
<b>SIPPS</b>	18,994	63.1	530	66.4	22,287	65.0	7,550	64.2	3,723	64.4	1,385	65.0	45,004
<b>Nassau Queens</b>	10,120	60.6	98	65.5	27,113	60.2	3,145	58.3	2,910	60.2	603	63.7	40,143
<b>Millennium</b>	20,060	64.8	1,518	58.0	16,501	64.8	3,685	60.9	1,691	65.9	735	61.0	38,252
<b>Suffolk Care Collaborative</b>	15,827	60.9	681	68.7	13,877	58.6	7,616	62.5	3,330	58.9	644	64.7	33,034
<b>BHNNY</b>	10,271	71.8	110	77.6	13,113	71.4	2,038	71.8	685	71.2	208	75.0	24,069
<b>Westchester</b>	9,904	69.2	55	74.7	8,758	67.8	330	67.6	889	70.0	84	73.3	19,551
<b>Alliance</b>	5,222	71.9	33	80.6	4,737	62.5	413	61.4	1,586	60.1	156	55.2	11,545
<b>Adirondack Health Institute</b>	1,819	70.1	55	72.5	4,594	70.3	227	73.0	928	70.8	34	67.9	7,341
<b>CNYCC</b>	851	67.5	10	68.4	4,577	66.6	218	67.5	499	68.3	26	74.6	5,927
<b>Care Compass Network</b>	93	61.1	1	52.9	4,077	69.0	93	74.5	748	71.8	9	63.9	4,918
<b>North Country Initiative</b>	355	66.5	1	0.0	2,508	65.6	194	61.9	246	66.0	38	63.3	3,109
<b>Leatherstocking</b>	339	60.5	20	74.2	2,316	64.3	322	61.5	216	66.2	53	61.9	2,871
<b>Total:</b>	<b>142,646</b>	<b>64.6</b>	<b>3,787</b>	<b>63.5</b>	<b>202,337</b>	<b>64.5</b>	<b>29,967</b>	<b>63.1</b>	<b>26,096</b>	<b>65.2</b>	<b>4,462</b>	<b>64.4</b>	<b>371,079</b>

## Key Findings

- Across MY 2-4, average aggregate PAM scores decreased by ~1 point between the 1<sup>st</sup> and 2<sup>nd</sup> PAM administered.
- In MY1, approximately 3% of PAM-surveyed individuals became P4P eligible, whereas in MY4, approximately 17% of PAM-surveyed individuals became P4P eligible.
- Between MY2 and MY3, the number of P4P eligible individuals increased by an estimated 791%.

# PAM Data by Cohort

Number of PAM Surveys Administered by MY<sup>1</sup>

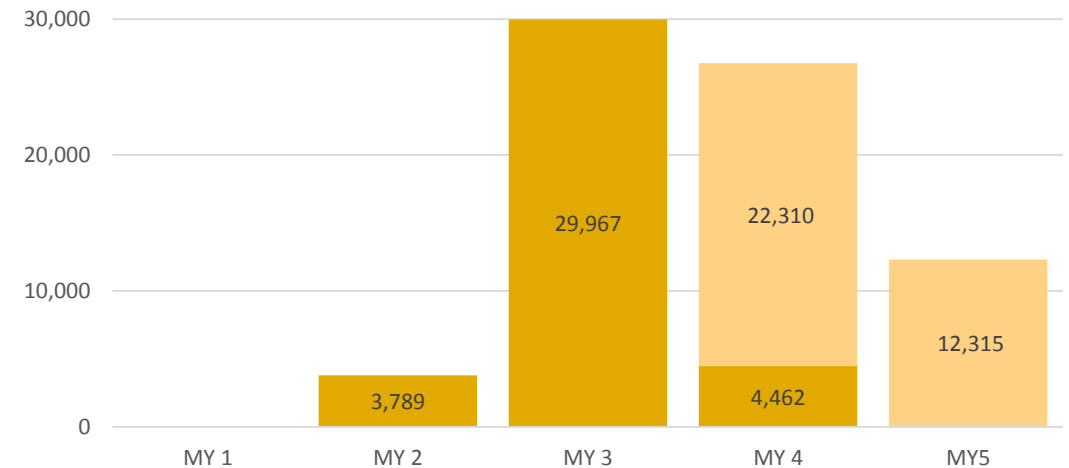
	MY1	MY2	MY3	MY4 <sup>3</sup>	Total
<b>Cohort A</b>	6	0	0	0	6
<b>Cohort B</b>	0	146,817	24,895	2,337	174,049
<b>Cohort C</b>	0	0	212,895	3,674	216,569
<b>Cohort D</b>	0	0	0	26,296	26,296
<b>Total</b>	6	146,817	237,790	32,307	416,920

Number of Newly P4P Eligible Individuals by MY

	MY 1	MY 2	MY 3	MY 4 <sup>2</sup>	MY 5 <sup>2</sup>	Total
<b>Cohort A</b>	0	0	0	0	0	0
<b>Cohort B</b>	0	3,789	21,050	6,672	2,115	33,626
<b>Cohort C</b>	0	0	8,917	19,050	6,038	34,005
<b>Cohort D</b>	0	0	0	1,050	4,038	5,088
<b>Cohort E</b>	0	0	0	0	124	124
<b>Total</b>	0	3,789	29,967	26,772	12,315	72,843

## Summary

- ~70,000 individuals estimated P4P eligible after MY5 given current trends
- Given current trends, the number of newly P4P-eligible individuals peaked in MY3
- Reminder: P4P data submission due with DY3Q2 reports



Notes:

1. Represents estimated total PAM surveys. Data source is a direct Flourish download and is not PPS reported or audited
2. MY4 and MY5 data values are predicted based on current trends.
3. Data represents three months of observation.

■ Actual ■ Predicted



# Questions?