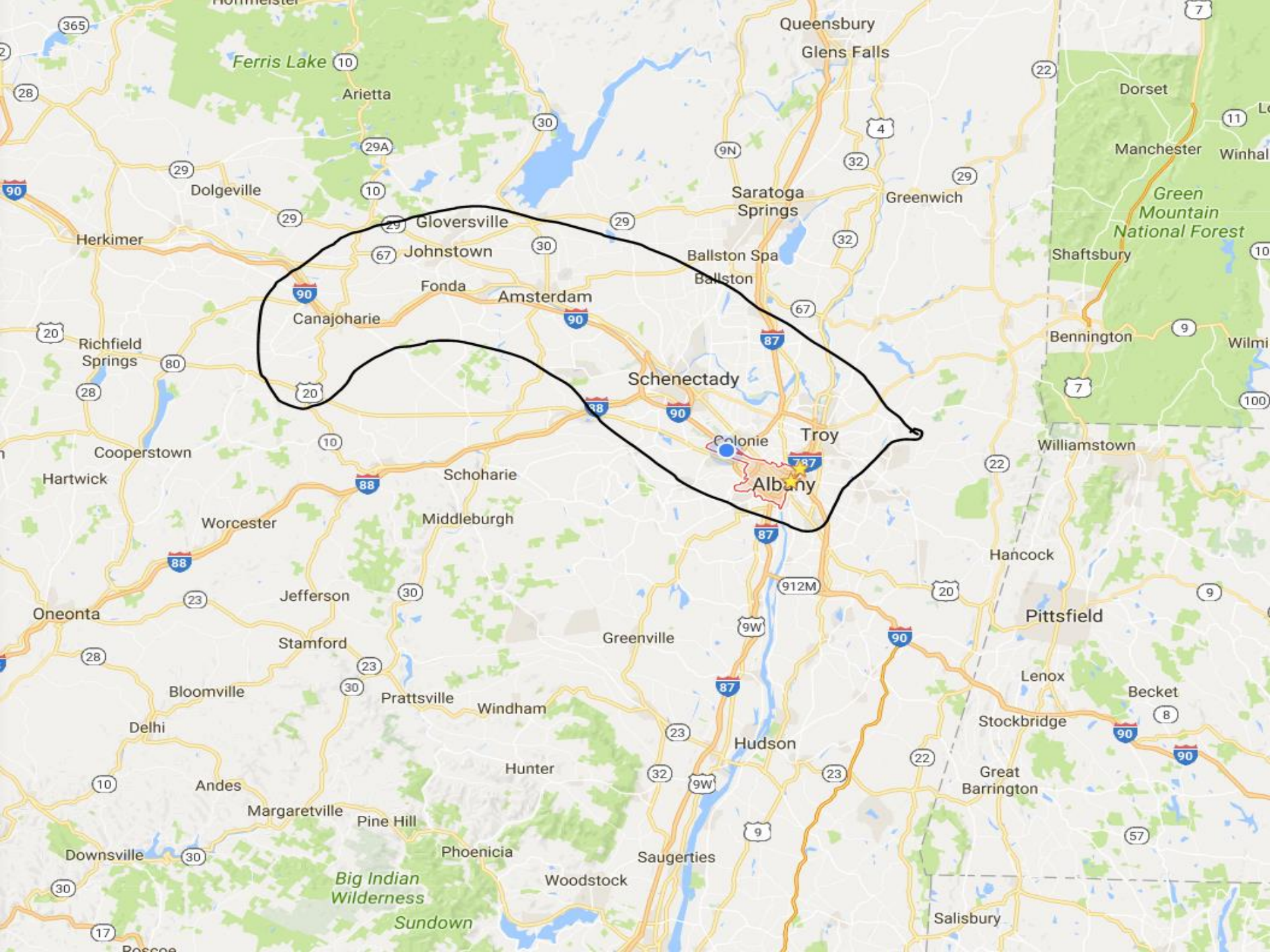




Jacob Reider MD
CEO

@jacobr



 St. Peter's Hospital

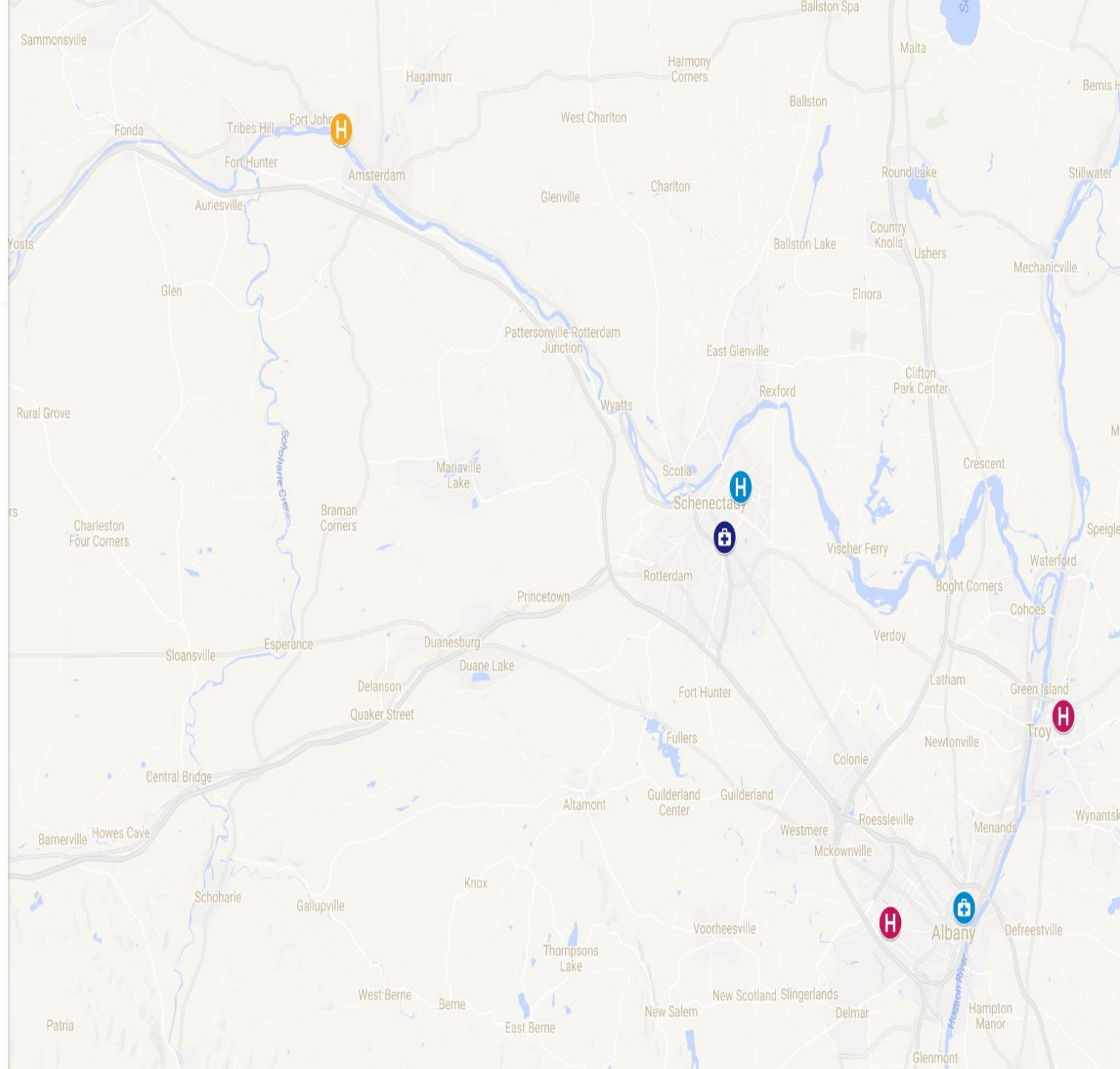
 Samaritan Hospital

 Ellis Hospital

 St Mary's Hospital-Amsterdam:

 Whitney M. Young Jr, Health Center

 Hometown Health Centers





Flowers
1-800-333-3333

PAI'S
KOREAN BBQ

THE FINEST FISH MARKET

SANDWICHES
HOT WINGS

McDonald's
HAPPINESS IS ALWAYS SERVED

DRIVE THRU

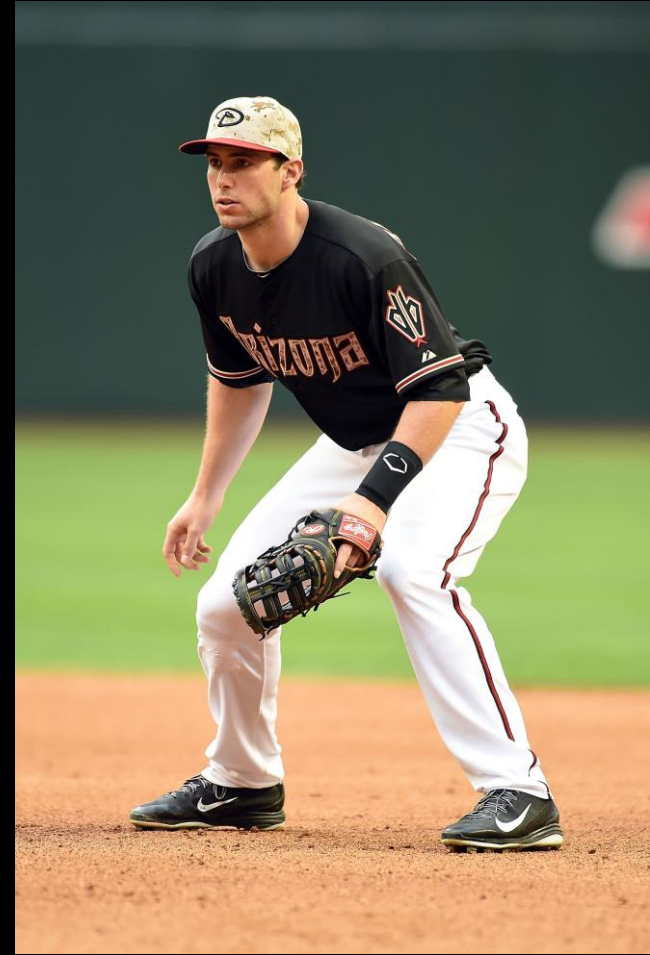
PIZZA





St. Peter's Health Partners
St. Mary's Hospital
Ellis Hospital

Whitney M Young Health Center
Hometown Health Centers





St. Peter's Health Partners
St. Mary's Hospital
Ellis Hospital

Whitney M Young Health Center
Hometown Health Centers

Preventing (or stopping) The Medical Cascade

(More) HEALTH

(Less) CARE

Empowering Community Based Organizations

A man with short hair and a goatee, wearing a dark blue hoodie, is smiling and looking down at a large, black and grey backpack he is holding. He is standing in a room with metal bunk beds in the background. The room appears to be a temporary housing facility. The backpack has multiple compartments and zippers. The man is also wearing a ring on his finger. The overall atmosphere is one of care and support.

Interfaith Health Partnership

12 short term respite beds for 144 homeless men and women.



Bethesda House

Transportation and community care management for 360 men, women and families.



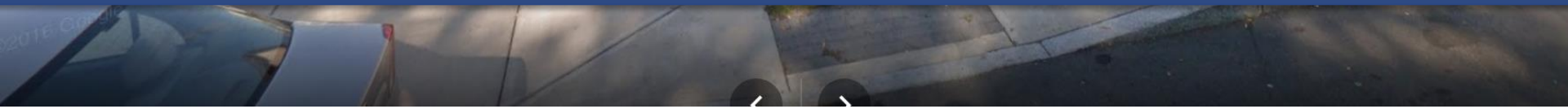
Here's Cookin' At You

Nutritious food delivered post-discharge to
1,000 men, women and families.

City Mission of Schenectady

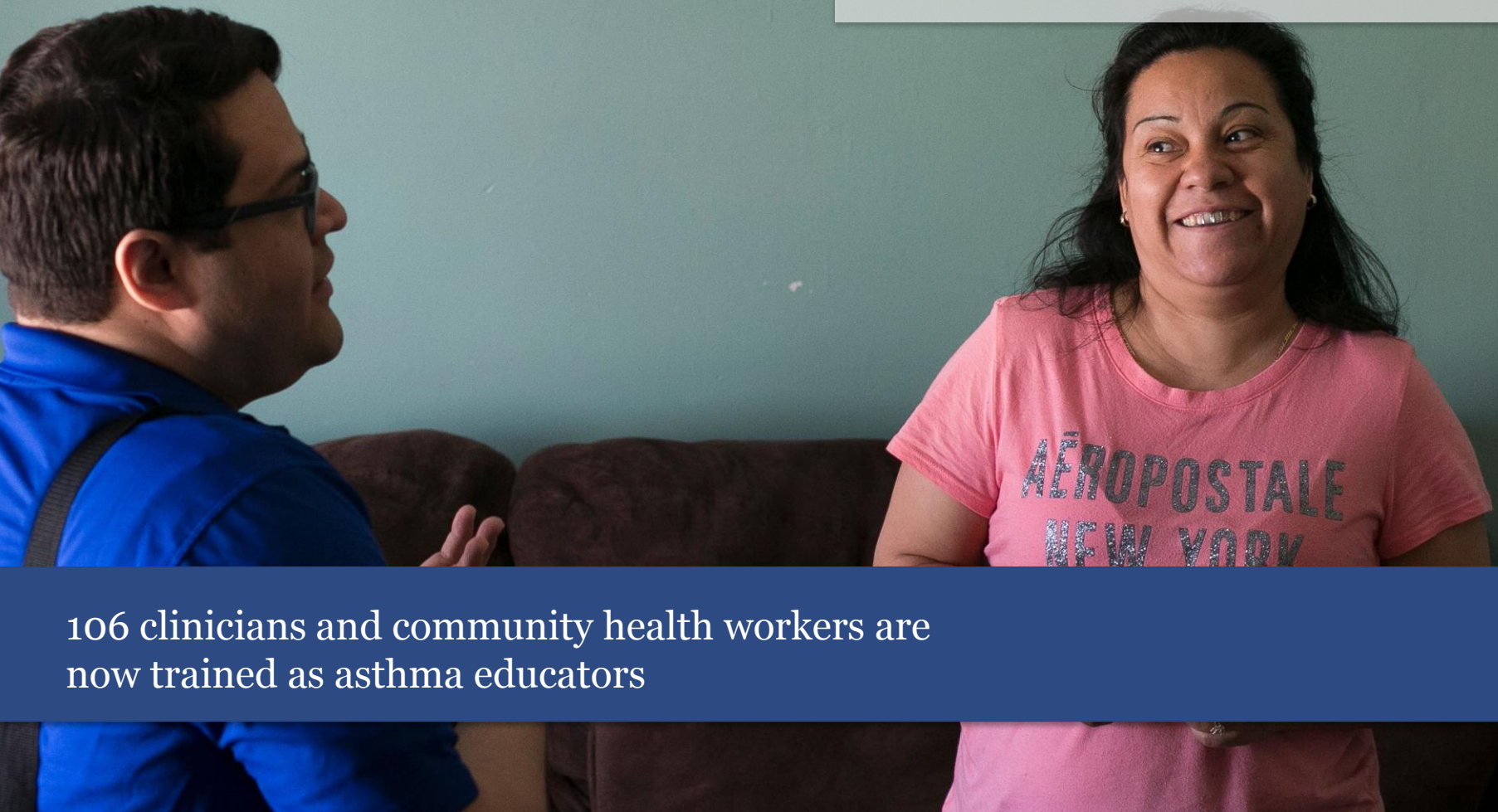


Bridges Out of Poverty Cultural Competency training



Workforce

Certified Asthma Educators and Community Health Workers



106 clinicians and community health workers are now trained as asthma educators

WORKFORCE CURRICULUM: HIGHLIGHTS



DSRIP 101

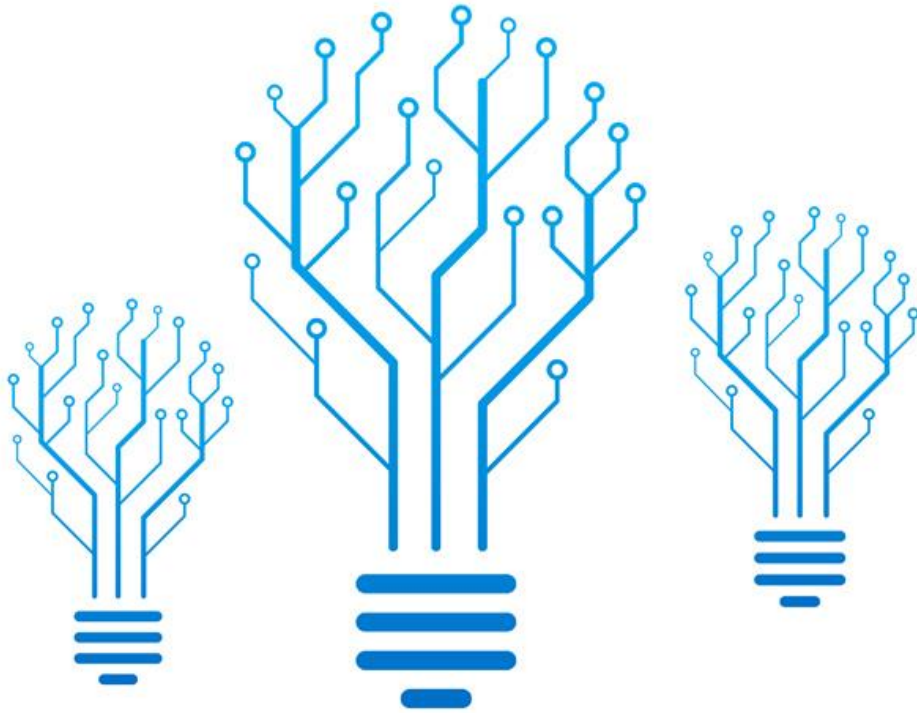
MOTIVATIONAL INTERVIEWING

DEPRESSION SCREENING

PPS Collaboration



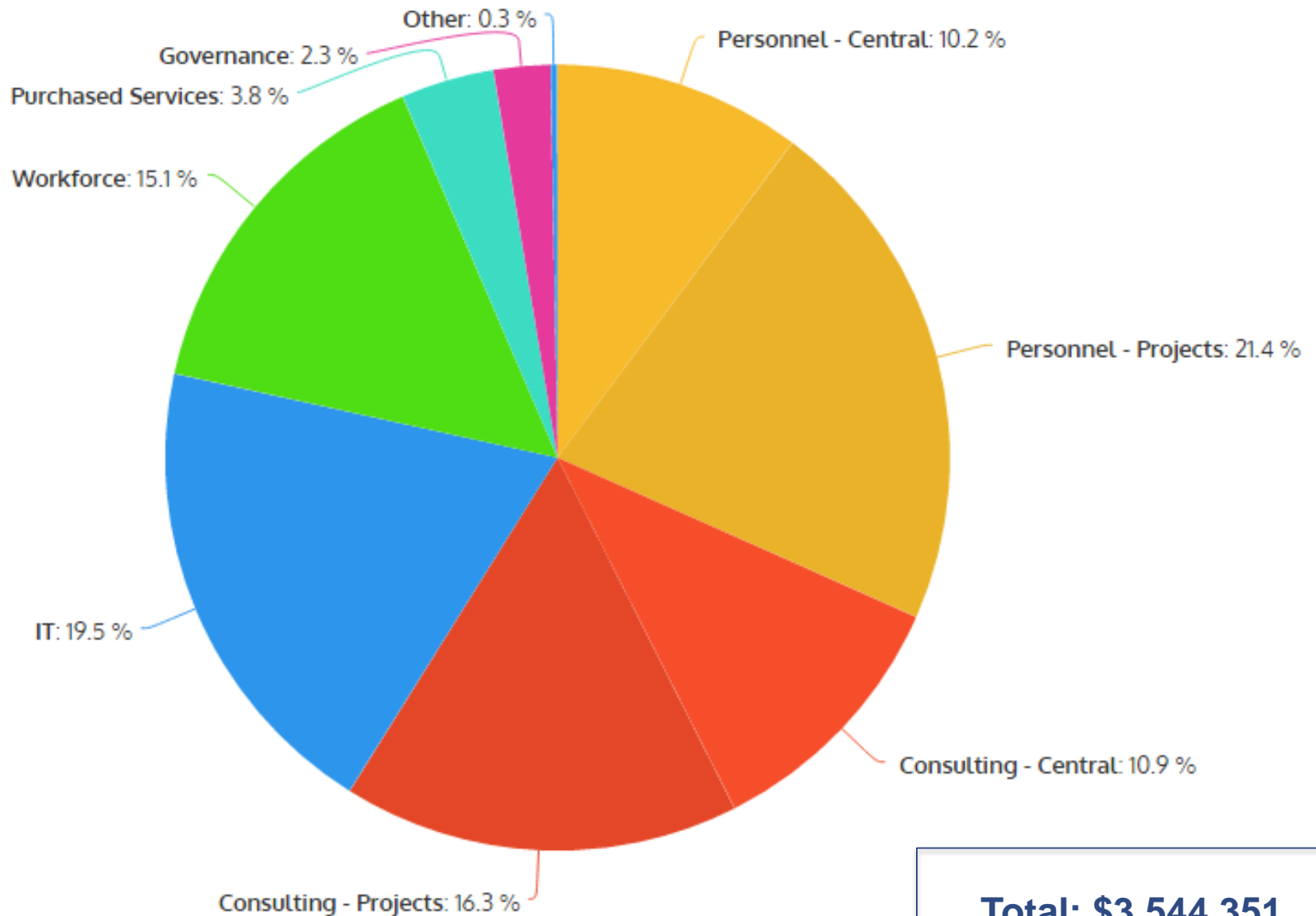
Capital Region Health Innovation Summit



Saratoga Springs, New York
Spring, 2017

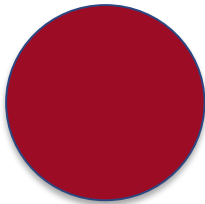
Where is our money going?

PMO Allocation of Funds through DSRIP Year 2, Quarter 2 (September 2016)



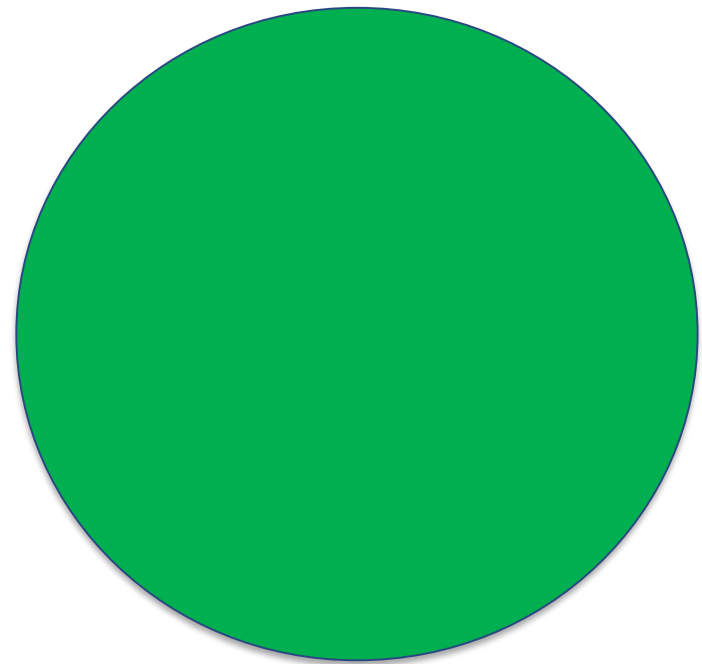
Funds Distributed to Community Based Organizations

(in Mid-Point Assessment)



Through September 2016

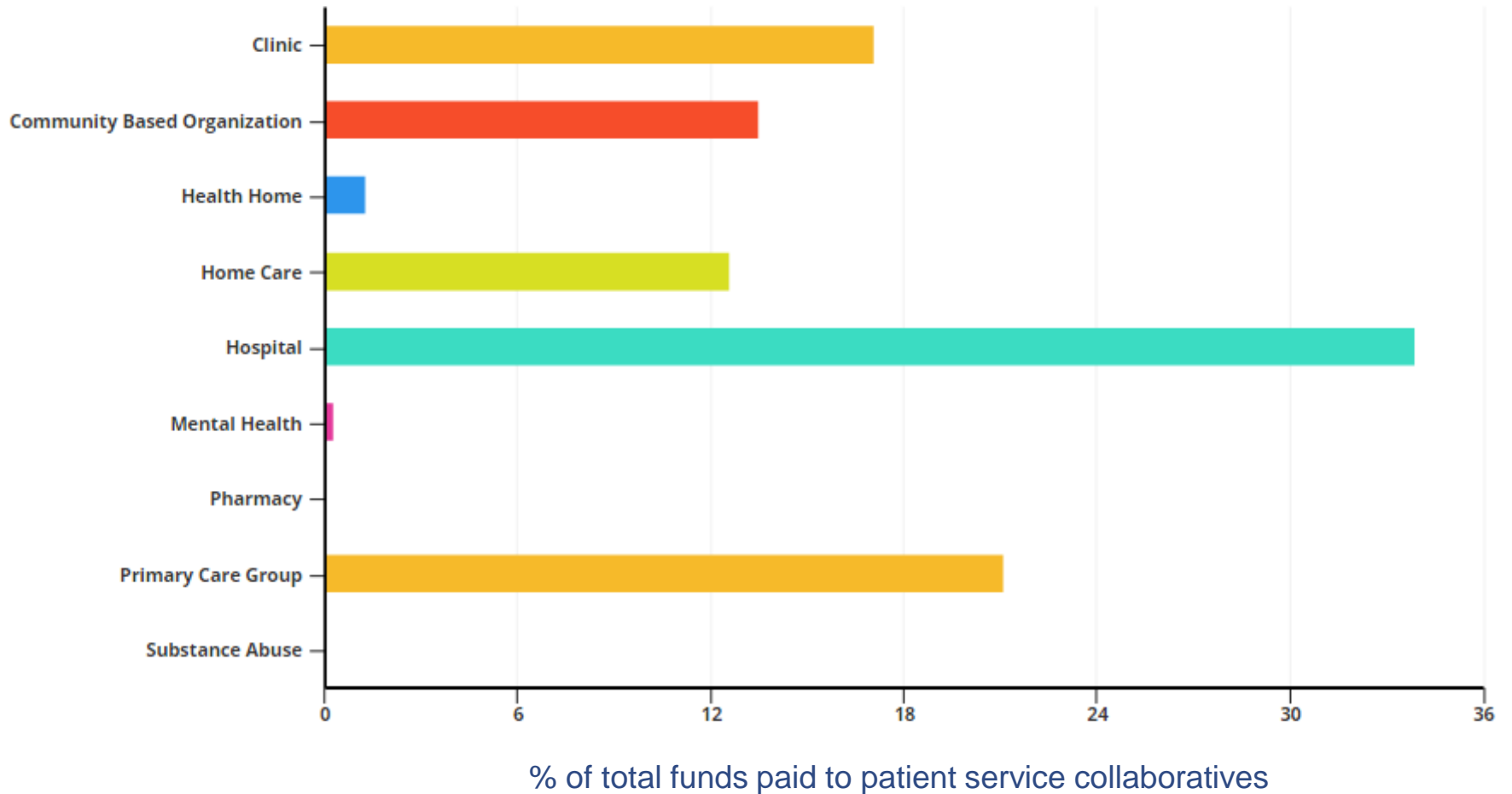
\$837,125



Through December 2016

\$4,683,174

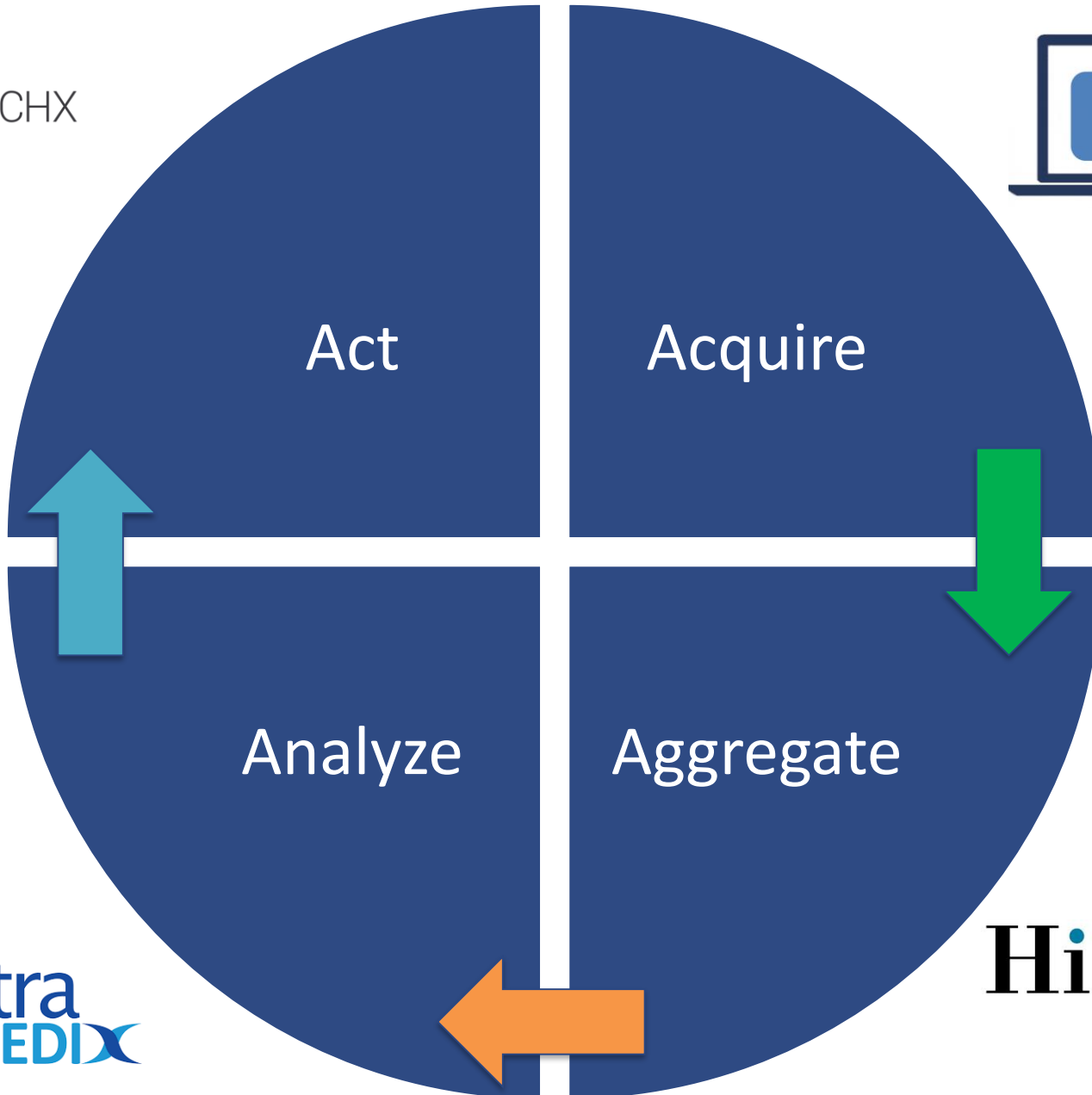
Funds Allocation Through December 2016



Total: \$34,699,408

Infrastructure?

 CROSSCHX



Spectra
MEDIX

Hixny®

Sustainability?

A young green plant with two leaves is growing in a white pot. The plant is being watered by a showerhead, with water spraying down on it. The background is blurred, showing other pots and the showerhead's structure.

Value Based Care

- PEOPLE

- Cultural Changes (Health/Care)
- Collaboratives: Performance
- MAX Series

- PRODUCT

- IHANY (IPA, ACO)
- IT: A-A-A-A
- Care Coordination

- PROCESS

- New Habits

Questions?

Appendix

A woman with long brown hair, wearing a blue short-sleeved shirt, is seated and gesturing with her hands as if in conversation. In the foreground, the back of a person wearing a black hoodie is visible, slightly out of focus. The background is a plain, light-colored wall.

Upper Hudson Planned Parenthood

2,723 new behavioral health sessions
created in the primary care setting.