

Sexual Health Review

Spring 2021

Office of Sexual Health and Epidemiology

OSHE

Volume 1, Issue 1



welcome

OSHE is proud to present our first Sexual Health Review quarterly newsletter. The intention of the newsletter is to communicate with Local Health Departments (LHDs) and highlight sexual health-related projects happening around the state; answer common questions; share important policy updates, emerging issues, recommended treatment changes, biomedical advances, and reporting requirements; disseminate, interpret, and discuss STI-related data; and communicate other STI awareness information. We hope you enjoy this first issue!

Dr. Rachel Malloy

Table of Contents:

COVID-19 & Sexual Health	2
Sexual Health Quiz	3
Spotlight on LHDs: Expedited Partner Therapy (EPT)	3
Meet OSHE Team	4

NYSDOH AIDS Institute Office of Sexual Health & Epidemiology

ESP Corning Tower, Rooms 536 and 542, Albany, NY 12237-0670

Phone: (518) 474-1387

Fax: (518) 486-5927

Email: stdc@health.ny.gov

Online: <https://www.health.ny.gov/diseases/communicable/std/>



COVID-19 and Sexual Health

The COVID-19 pandemic is causing people to make significant changes in their day-to-day routines. During this challenging time it is necessary to provide new and updated sexual health guidance that addresses keeping safe while still enjoying sex.

This infographic was created by the “End HIV” program in Oregon, utilizing messaging created by the New York City Department of Health.

EndHIVOregon.org

NYC Health Department Sex and COVID-19 Fact Sheet - NYC.gov

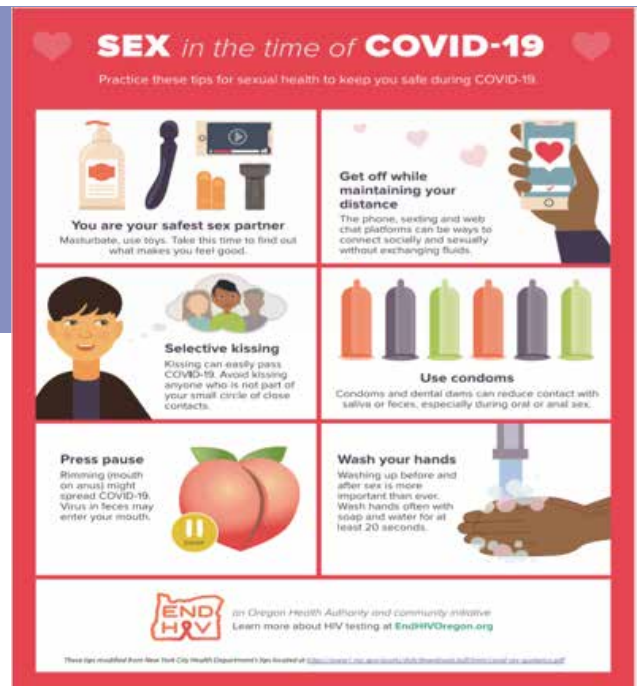
If you are experiencing shortages of cefixime, azithromycin, and/or gentamicin, please email stdc@health.ny.gov with the subject line: **STI drug treatment shortage**. While we have not heard of any shortages in New York State, the Centers for Disease Control and Prevention has reported hearing of local shortages.

The National Coalition of STD Directors includes resources for STI programs related to COVID-19:

<https://www.ncsddc.org/covid-command-center-std-program-resources/>.

The Centers for Disease Control and Prevention issued a letter in April of 2020, offering guidance to STI prevention programs, including STI clinics, on providing effective STI care and prevention when facility-based services and in-person patient-clinician contact is limited:

<https://www.ncsddc.org/wp-content/uploads/2020/04/STD-Treatment-Options-04062020.pdf>.





NCSH Launches Sexual Health Quiz

The National Coalition for Sexual Health (NCSH) has launched an engaging, informative quiz: “*How’s Your Sexual Health?*” to help the public assess their sexual health, provide brief tips, and direct them to practical NCSH resources.

This holistic quiz tackles key barriers to good sexual health, including building positive relationships, talking openly with partners, advocating for oneself, and setting digital boundaries. The quiz also features questions on STI screening and treatment, medications for HIV prevention, and safer sex. The quiz does not score or judge respondents. Instead, it includes agree/disagree statements, and provides answers with practical tips, facts, and links to resources, such as the www.fiveactionsteps.org.

The quiz was developed by NCSH’s Communications Action Group, is mobile-friendly, and has a permanent home on the NCSH website.



Spotlight on LHDs: EPT Article 6 Project

In collaboration with the Office of Public Health Practice, one of our efforts toward **reducing rates of STI re-infection** is through promoting and incentivizing the practice of **Expedited Partner Therapy (EPT)**. In 2019, we launched a million-dollar performance incentive project for all 57 local health departments outside of New York City to promote EPT education, EPT data completion on case reports, and the provision of EPT to eligible partners.

The goals of the performance incentive are to increase the provision of EPT and highlight barriers that local health departments are facing when prescribing EPT and dispensing medication-in-hand. Many county stakeholders have changed or are in the process of changing internal policies to start providing EPT. Additionally, county stakeholders are utilizing the educational and promotional materials created by the EPT subcommittee to educate providers, pharmacists, and local community members to get “**Every Partner Treated**” for chlamydia, gonorrhea, and trichomoniasis!

Due to LHD time, effort, and resources shifting to the needed response to COVID-19, this project has been extended into 2021. **For more information about EPT see the newly issued EPT Interim Guidance. If you have questions or wish to join the EPT subcommittee, please contact us at: ept@health.ny.gov**

OSHE's Mission

The Office of Sexual Health and Epidemiology (OSHE) is dedicated to serving as a leader in sexual health through innovative public health practice and ethical use of data to promote sexual positivity and provide resources that directly and indirectly influence everyone to live a sexually healthy life.

OSHE's Vision

To individualize and normalize sexual health; ensure the prevention, treatment, and elimination of sexually transmitted infections; and implement holistic community impact.

OSHE defines sexual health as, “the ability to embrace and enjoy our sexuality throughout our lives.”

There are six concepts of sexual health:

- Understanding that sexuality is a **natural part of life** and involves more than sexual behavior
- Being able to experience sexual pleasure, satisfaction, and intimacy **when desired**
- Being able to communicate about sexual health with others including sexual partners and health care providers
- Recognizing and respecting the sexual rights we all share
- Having access to sexual health information, education and care
- Making an effort to **prevent** unintended pregnancies and STIs and seek care and treatment when needed



OSHE Team, February 2020

Meet the OSHE Team

The Office of Sexual Health and Epidemiology (OSHE) is dedicated to promoting sexual health among all New Yorkers. Our team is ready to provide local health departments with the tools that they need to serve their communities. OSHE is comprised of the following units: Surveillance and Special Projects Unit (SSPU), Sexual Health Education, Research, Policy and Programming (SHERPP), the Prevention Training Center (PTC), and Administration (Admin).

SSPU: Local County Health Departments in New York State excluding New York City. SSPU develops meaningful and relatable material for public use in understanding the STI profile of New York State.

SHERPP: SHERPP utilizes surveillance and epidemiological data to influence the sexual health education, research, policy, and programming initiatives within this unit. SHERPP provides sexual health capacity and support to internal affiliates and external stakeholders.

PTC: The NYS PTC is a member of the national Disease Intervention Training Center (DITC), an organization dedicated to providing standardized national training and decision-making tools to disease intervention specialists (DIS) providing partner services in health departments and other related settings across the country.

ADMIN The Administrative unit is responsible for the overall operational and administrative management for OSHE within the AIDS Institute. The Administrative unit ensures OSHE runs efficiently and maintains effective communication internally and externally with key stakeholders.



Department
of Health