

**Changes in the Age
Composition of the Population
Living with HIV/AIDS in
New York State, 2002-2007**

Persons Living with HIV/AIDS
(PLWHA)

Background

- With effective ARV treatment available, HIV is now a treatable disease
- No cure. A chronic disease
- Dramatic increases in survival with HIV
 - Life expectancy 30-35 years, if diagnosed early, 25 yrs of age, properly treated
- High likelihood that a PLWHA may die of other causes

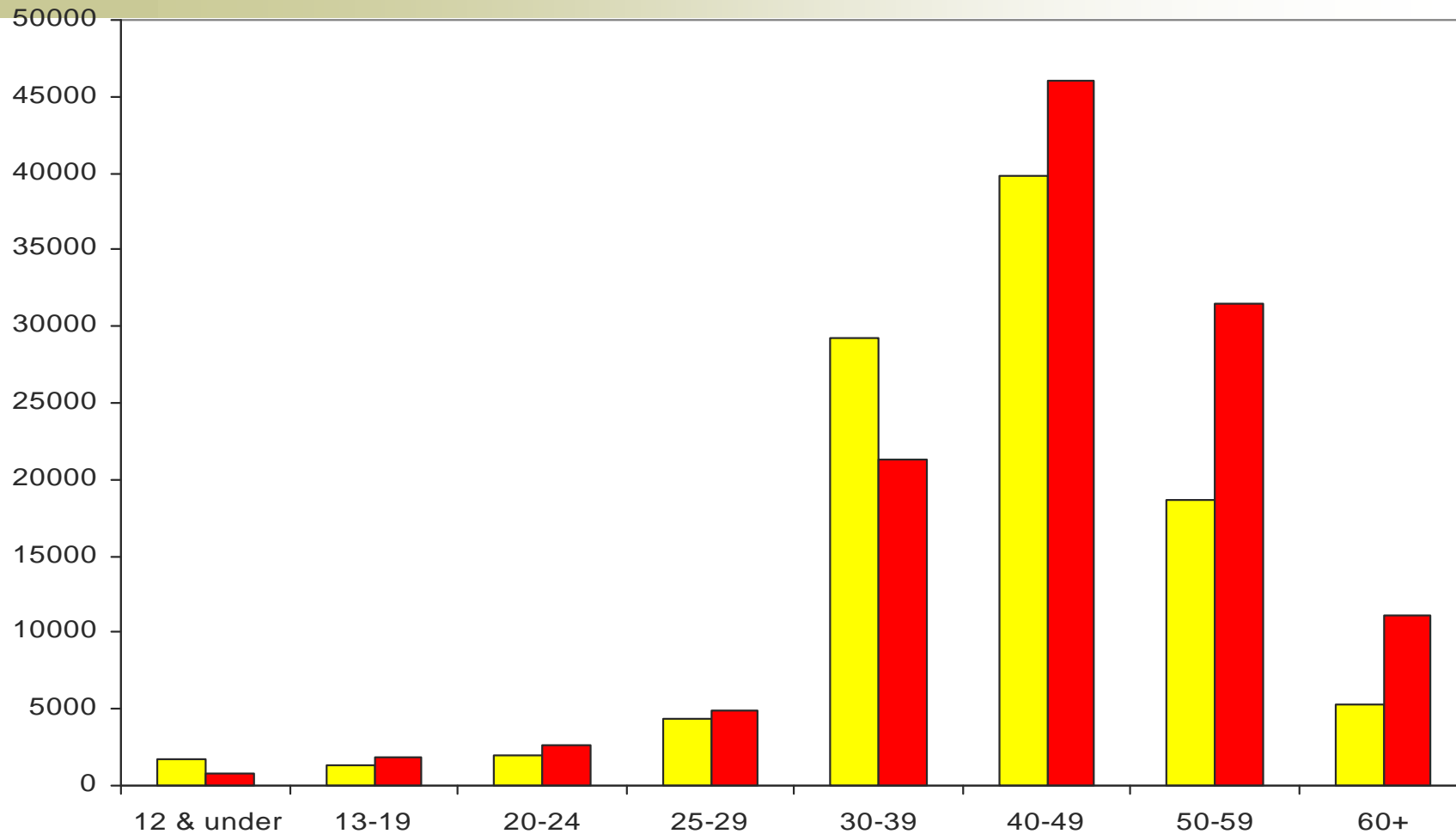


Persons Living with HIV/AIDS

- HIV/AIDS Registry
- Matching
 - NYS Death Registry
 - National Death Registry

Persons Living with HIV/AIDS

By Age, New York State, end of year, 2002 and 2007*



* 2007 data are provisional

(2002 N=102,464)

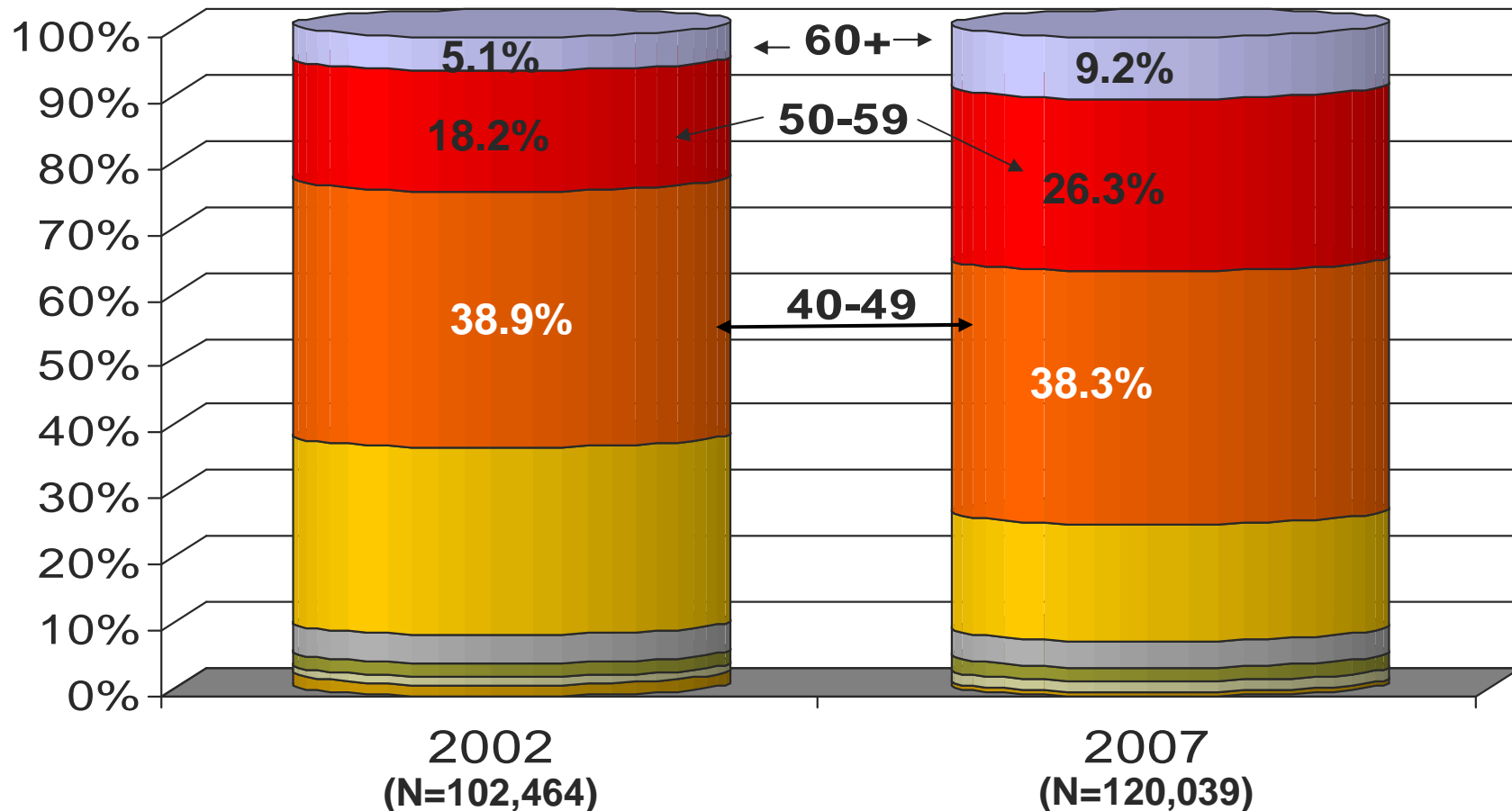
2002 2007

(2007 N=120,039)

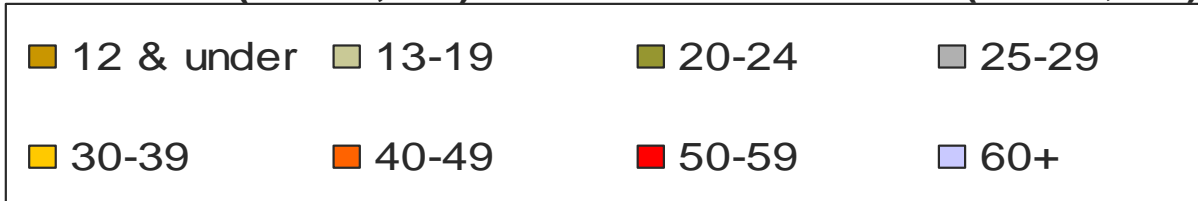
Source: NYSDOH BHA

Persons Living with HIV/AIDS

By Age, New York State, end of year, 2002 and 2007*



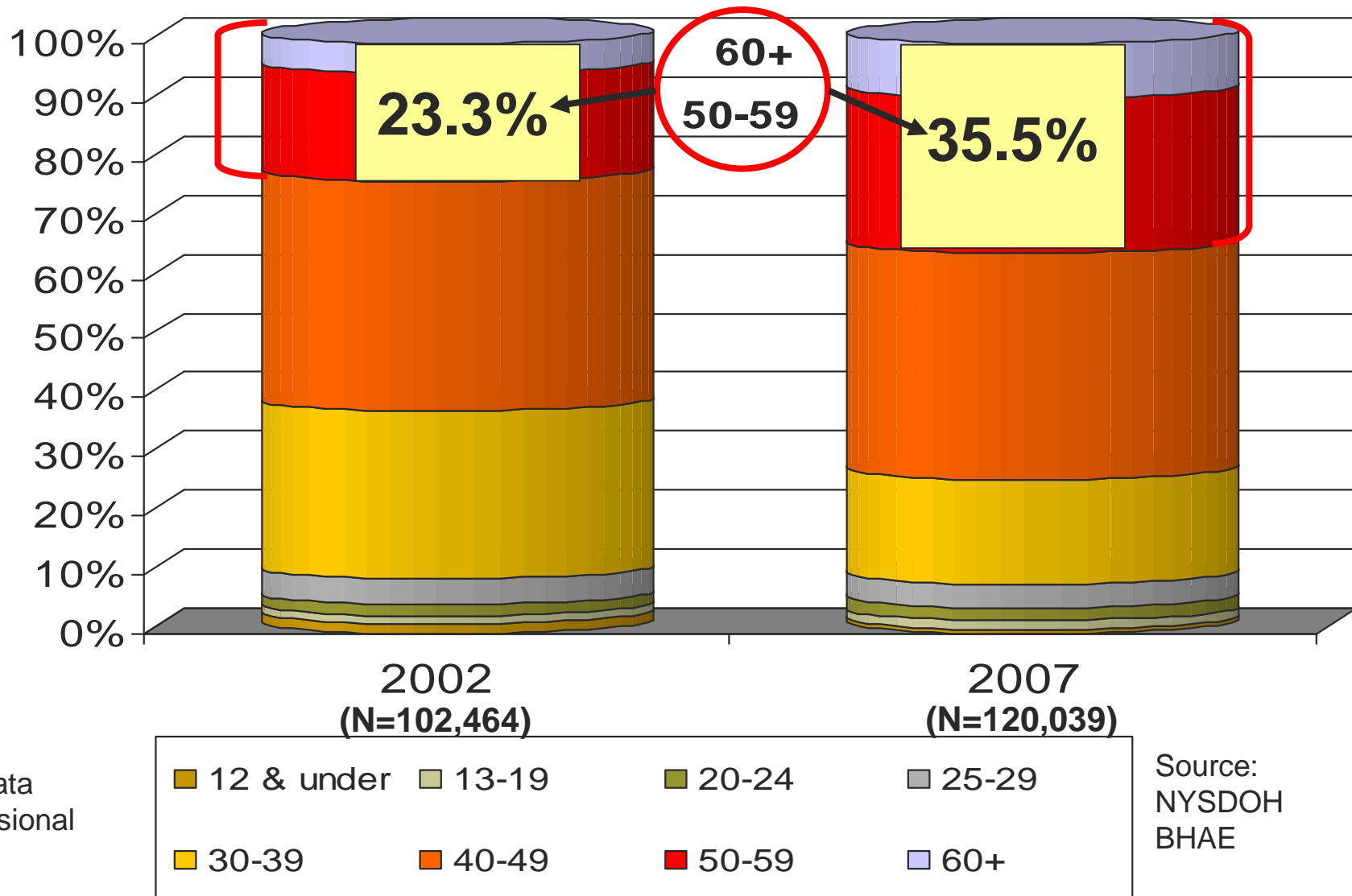
* 2007 data are provisional



Source:
NYSDOH
BHAЕ

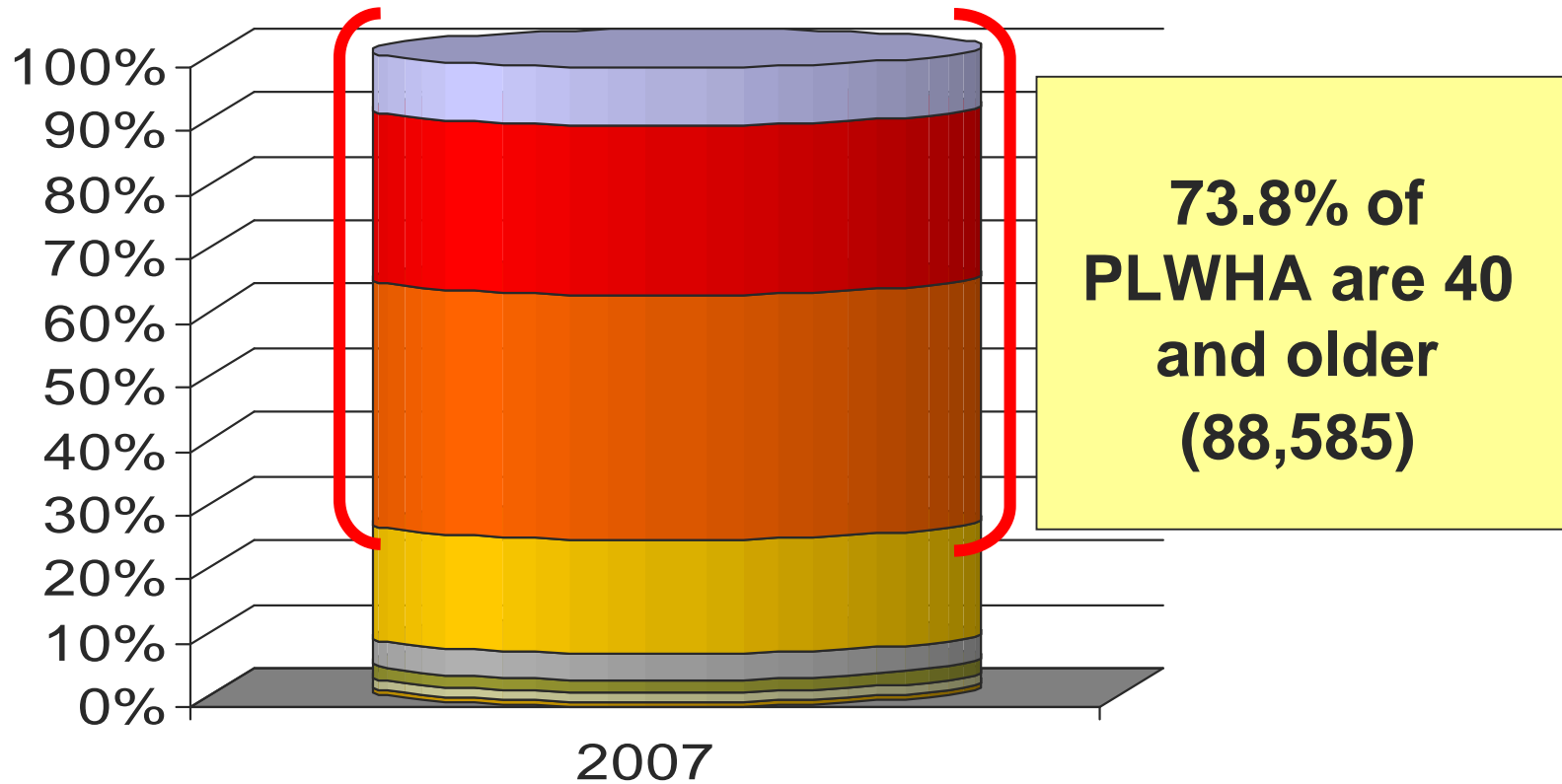
Persons Living with HIV/AIDS

By Age, New York State, end of year, 2002 and 2007*

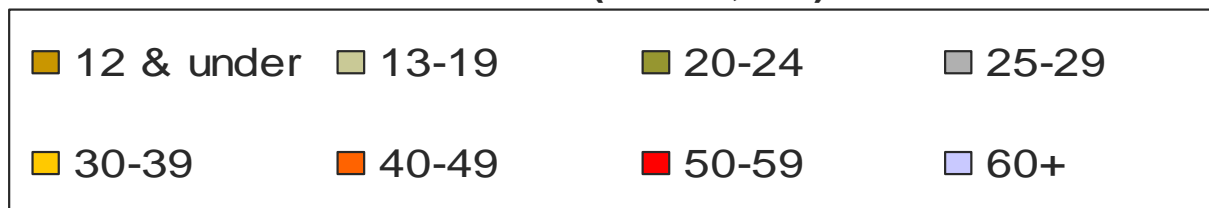


Persons Living with HIV/AIDS

By Age, New York State, end of 2007*



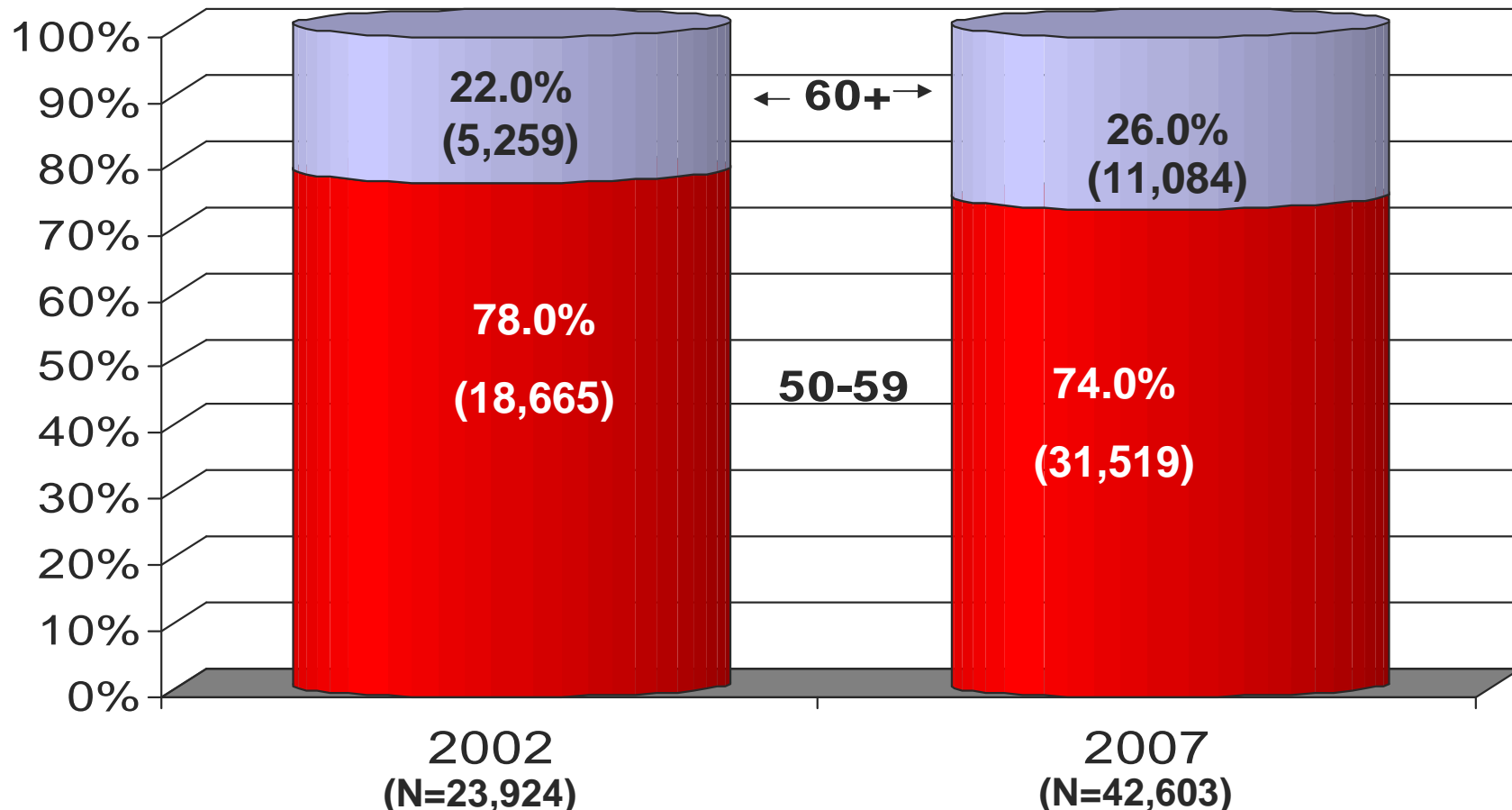
* 2007 data are provisional



Source:
NYSDOH
BHA

Persons Living with HIV/AIDS Age ≥50

New York State, end of year, 2002 and 2007*



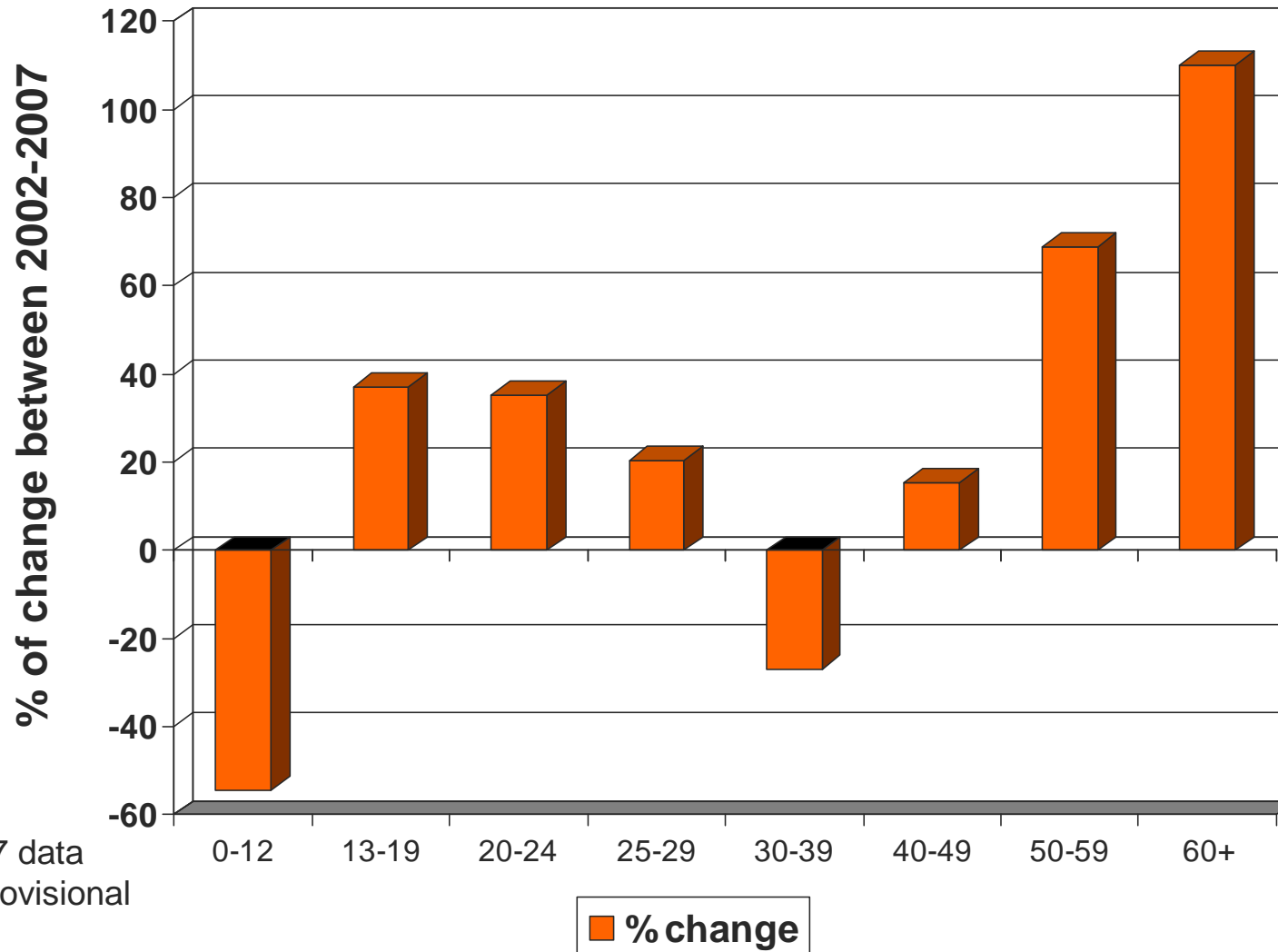
* 2007 data are provisional



Source:
NYSDOH
BHAЕ

Percent Change by Age Group

PLWHA New York State, end of year, 2002 and 2007*



* 2007 data are provisional

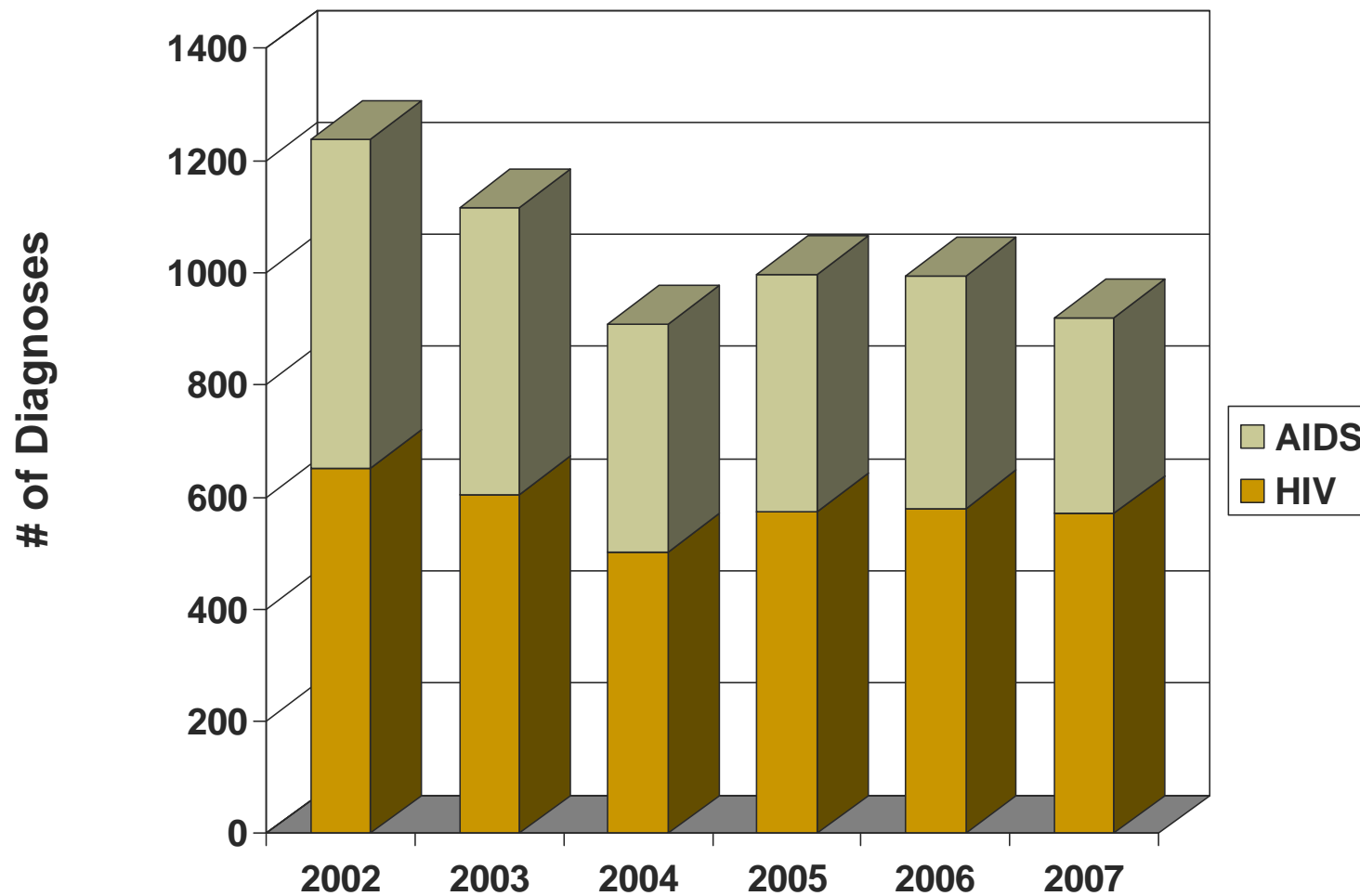
Source:
NYSDOH
BHAЕ



**New Diagnoses among 50
and Older, NYS, 2002-2007**

New HIV and AIDS Diagnoses Among Men 50Yrs. of Age and Older

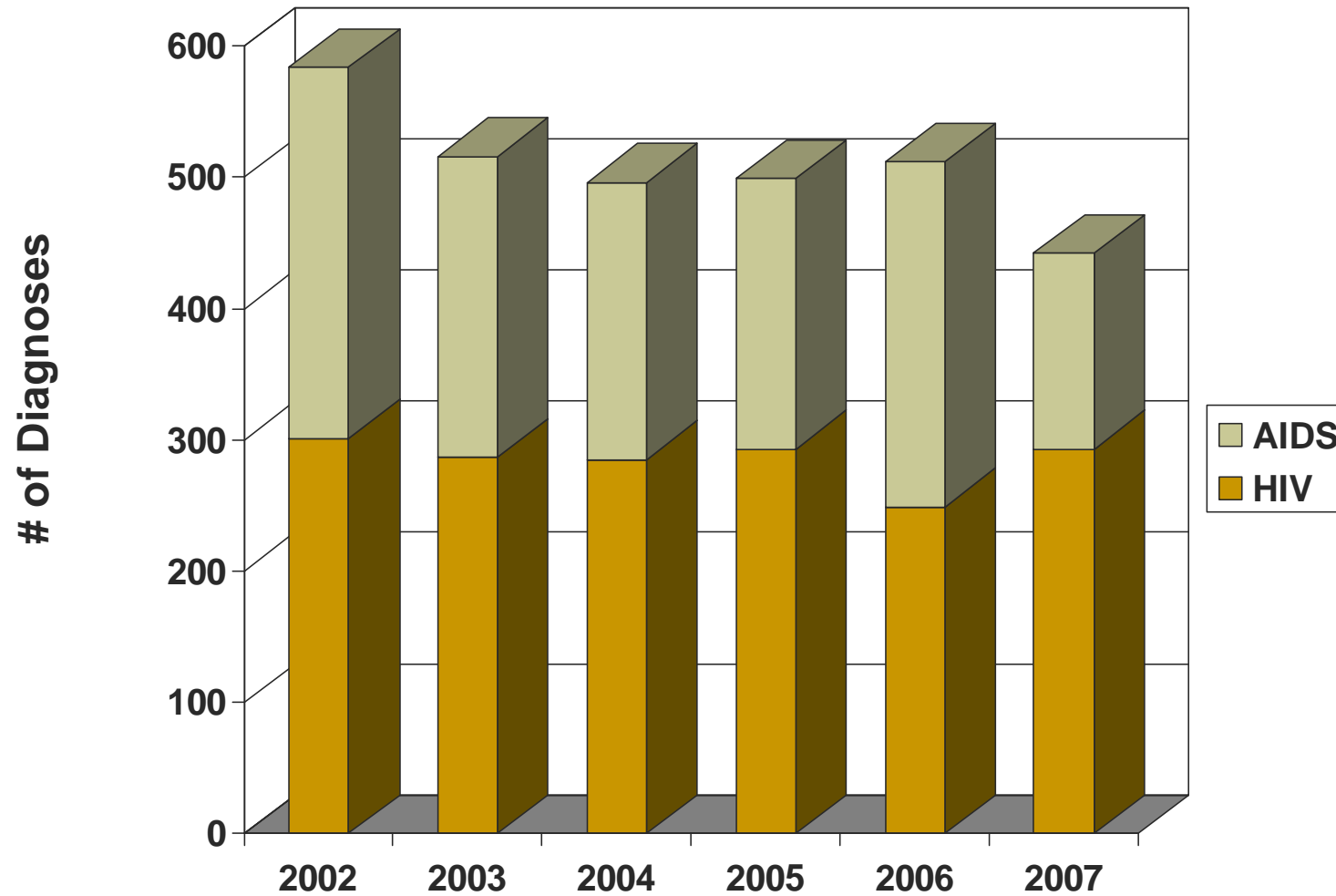
New York State, 2002-2007*



Source:
NYSDOH
BHAЕ

New HIV and AIDS Diagnoses Among Women 50Yrs. of Age and Older

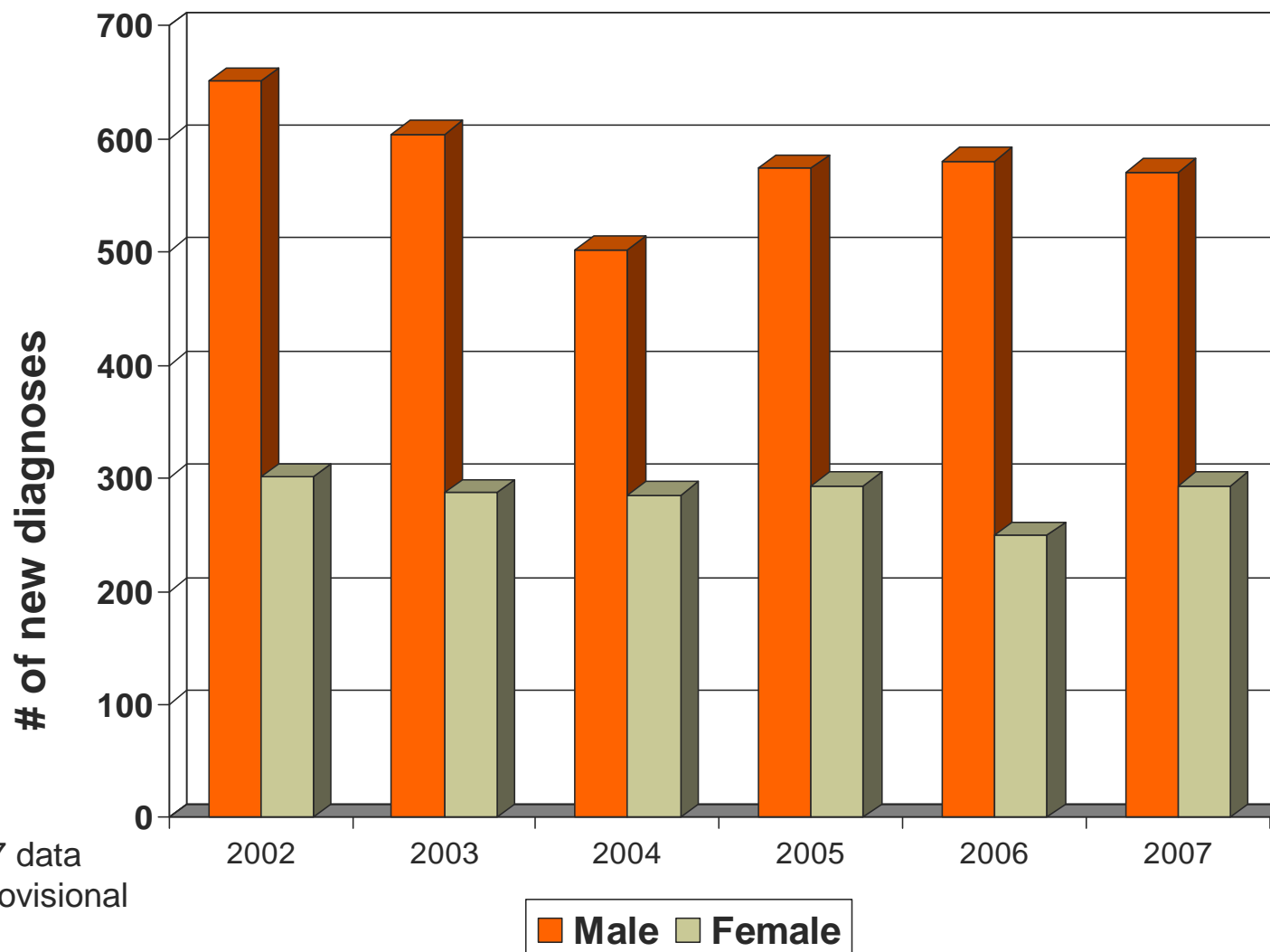
New York State, 2002-2007*



Source:
NYSDOH
BHA E

New HIV Diagnoses Among 50 Yrs. of Age and Older, by Gender

New York State, 2002-2007*

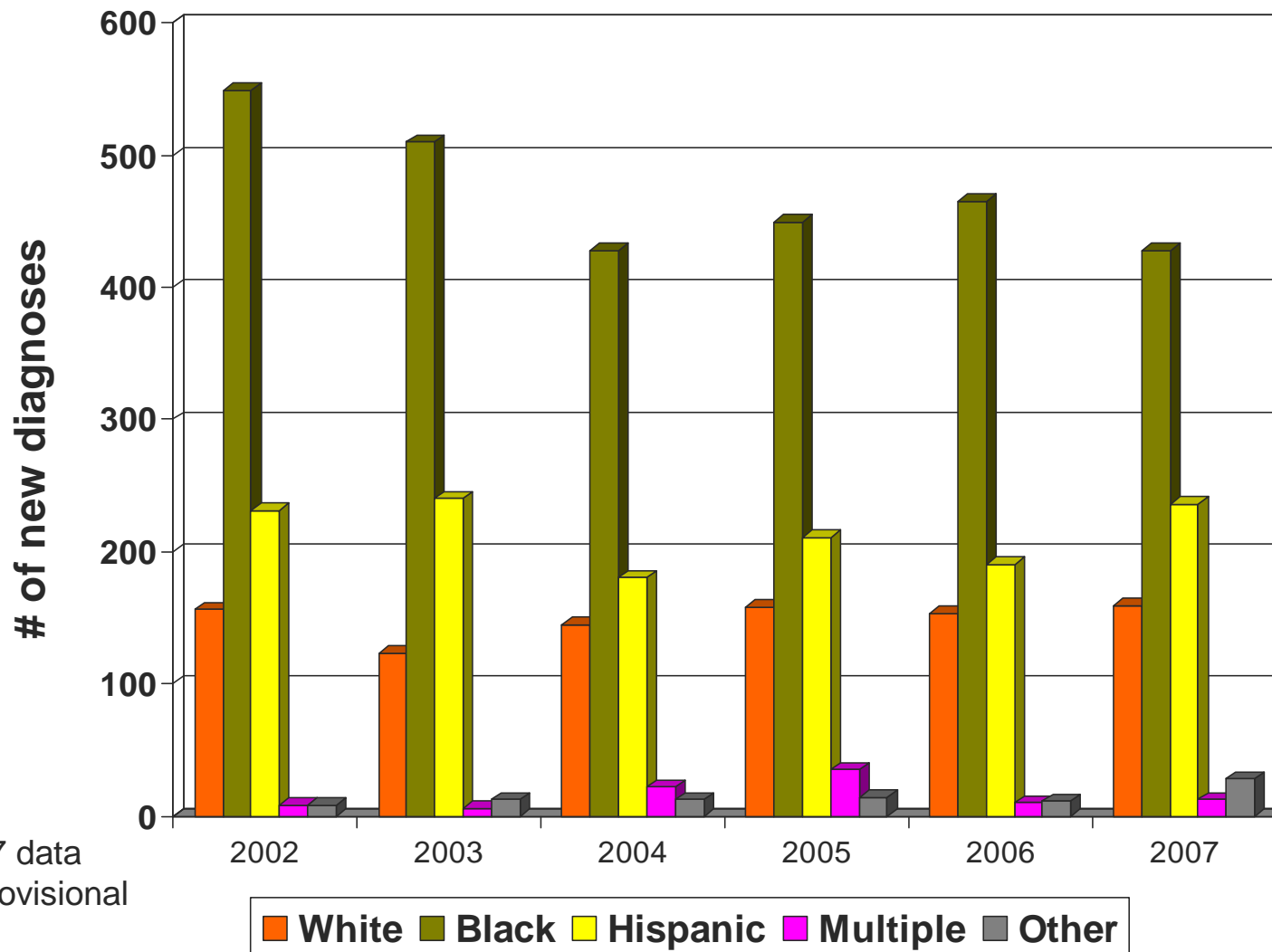


* 2007 data are provisional

Source:
NYSDOH
BHA E

New HIV Diagnoses Among 50 Yrs. of Age and Older, by Race/Ethnicity

New York State, 2002-2007*



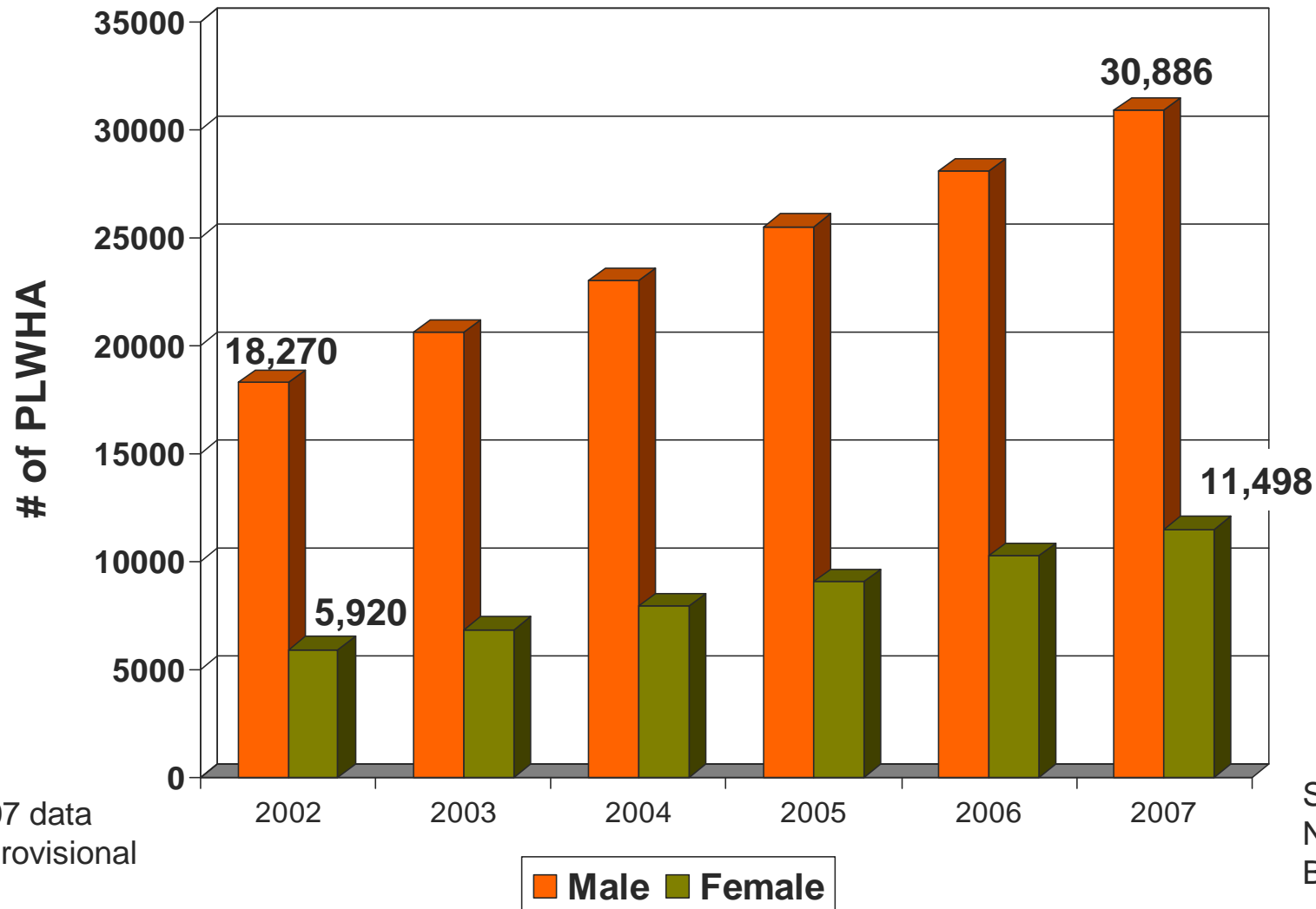
* 2007 data are provisional

Source: NYSDOH BHA



PLWHA 50 and Older, NYS, 2002-2007

PLWHA 50 Years of Age and Older, by Gender New York State, 2002-2007*

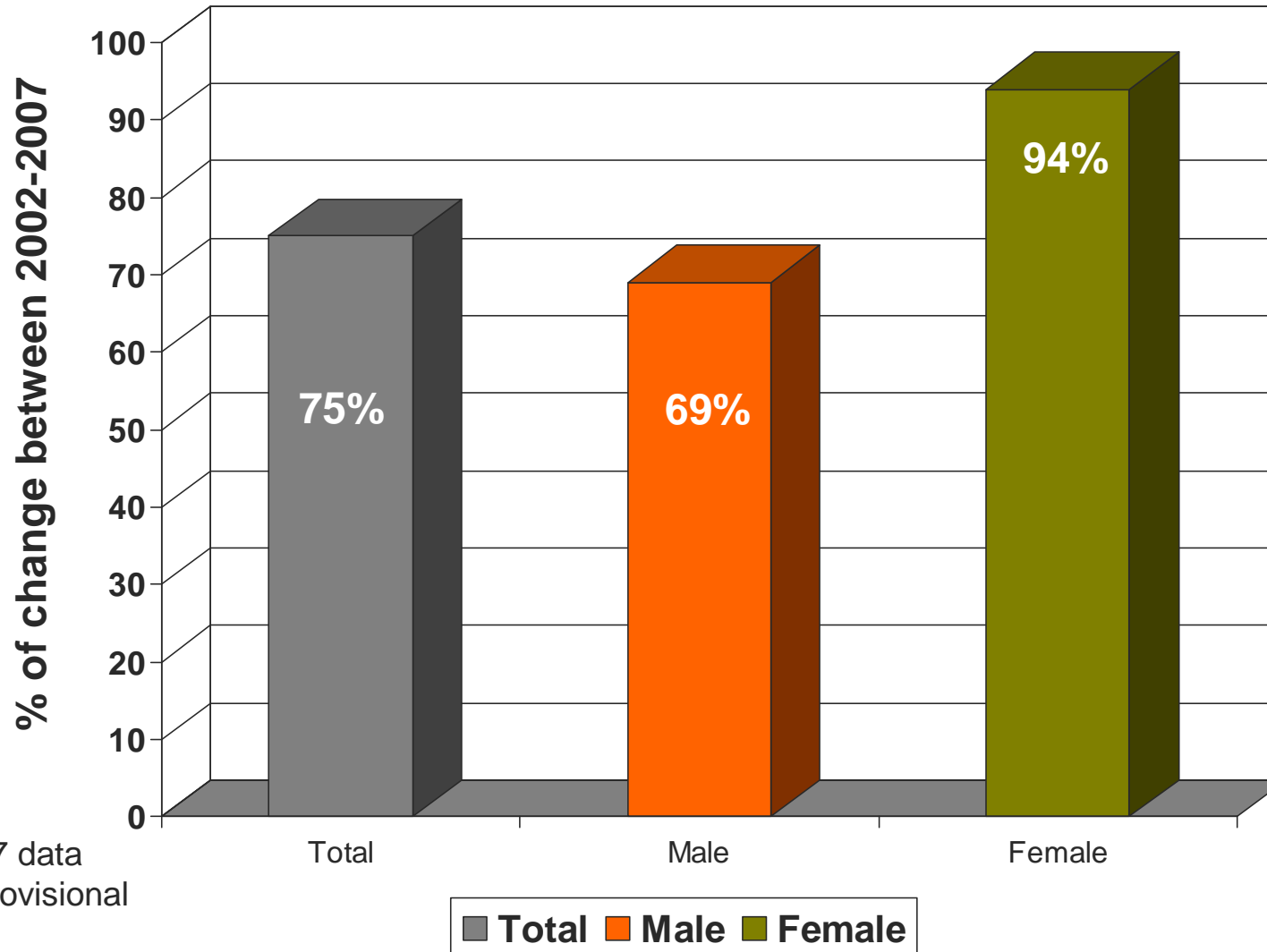


* 2007 data are provisional

Source:
NYSDOH
BHAЕ

Percent Change Among 50 and Older by Gender

PLWHA New York State, end of year, 2002 and 2007*



* 2007 data are provisional

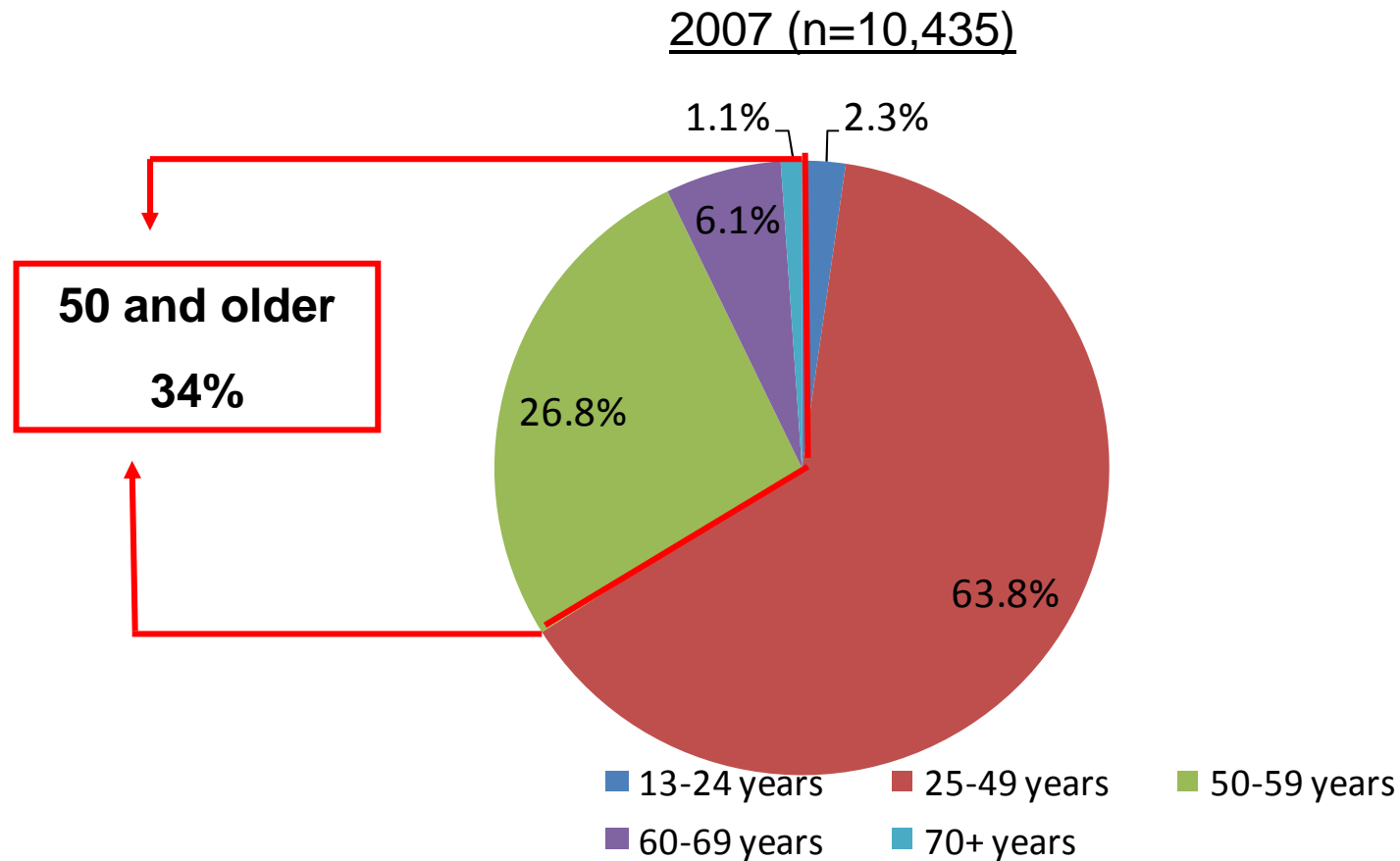
Source:
NYSDOH
BHA E

Service Delivery Data

- Quality of Care
- Medicaid
- AIDS Reporting System (AIRS)

NYS Quality of Care Program

Analytic Sample Demographics: Age



Source: NYS HIV QOC Program



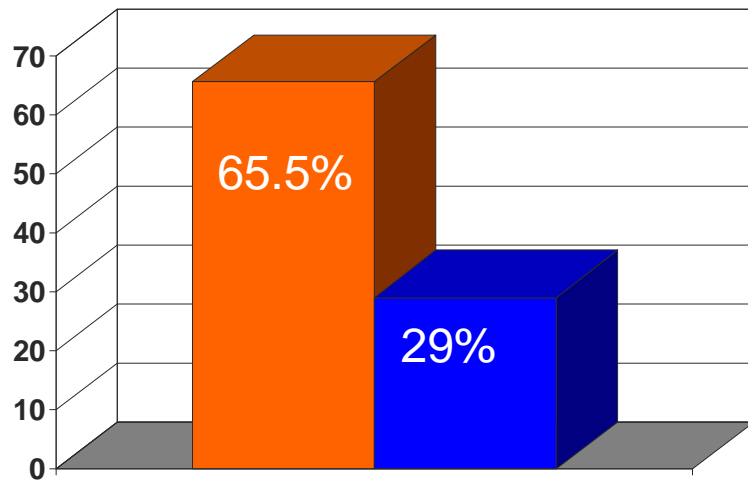
Medicaid, 2007



Older/Mature Patients

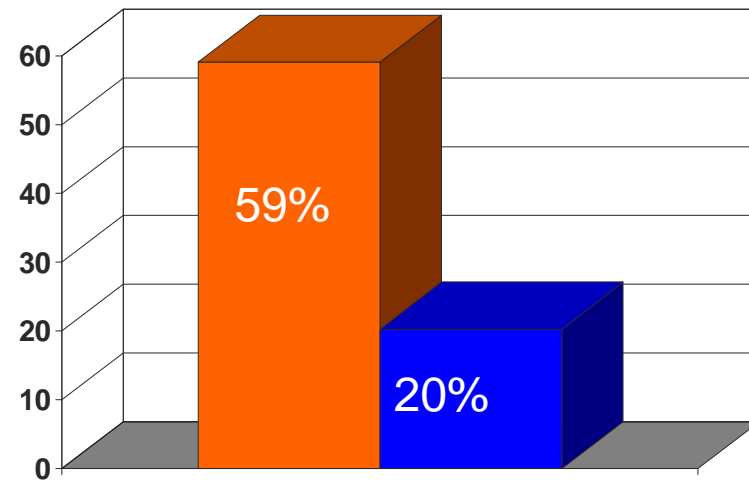
40 yrs. and older

50 yrs. and older



N=64,652

Medical Care*



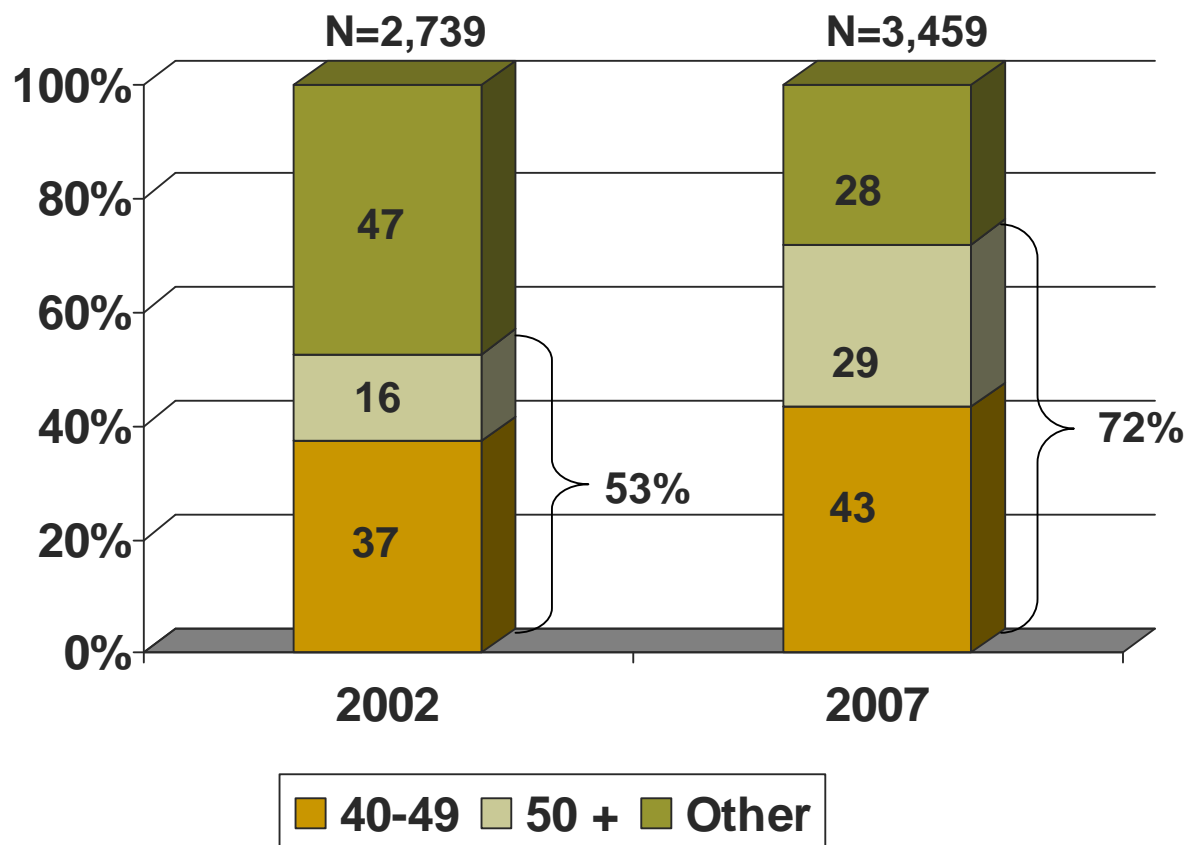
N=12,488**

COBRA (Case Management)

* Fee-for-service only. Excludes Medicaid Managed Care

** Excludes 1,377 with unknown age

Patients Receiving Services at St. Vincent's Hospital, 2002-2007



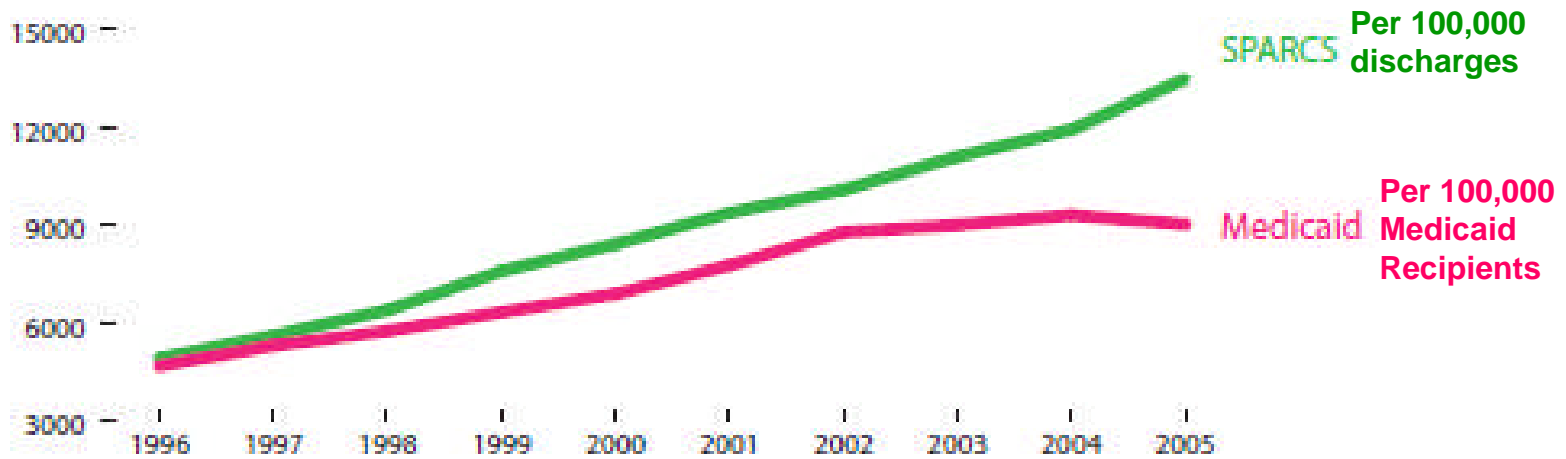
Source: AIRS (AIDS Reporting System)

HIV and Other Chronic Diseases



- Diabetes
- Metabolic diseases (other than diabetes)
- Cardiovascular diseases (CVD)
- Selected cancers
- Risk factors

Diabetes Among PLWHA, NYS, 1996-2005



Metabolic Diseases Among PLWHA, NYS, 1996-2005



Diagnoses of Metabolic Diseases among PLWHA in NYS, 1996-2005

Per 100,000 HIV/AIDS SPARCS Discharges



Metabolic Diseases

(other than Diabetes)

Diagnoses of Metabolic Diseases among PLWHA in NYS, 1996-2005

Per 100,000 HIV/AIDS Medicaid Recipients

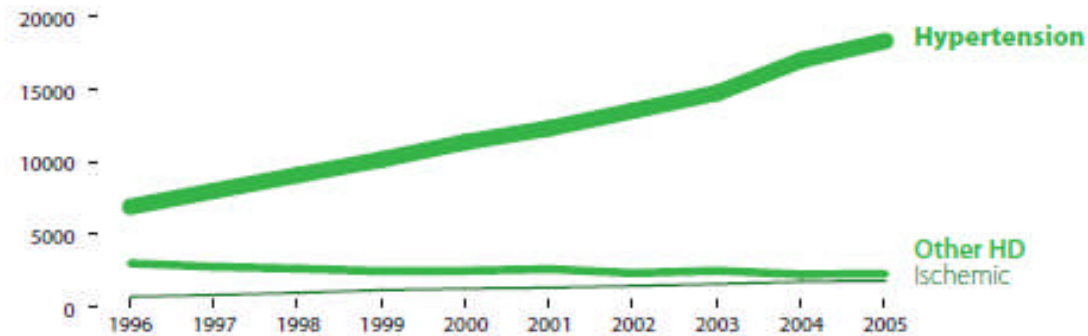


CVD Among PLWHA, NYS, 1996-2005



Diagnoses of Cardiovascular Diseases among PLWHA in NYS, 1996-2005

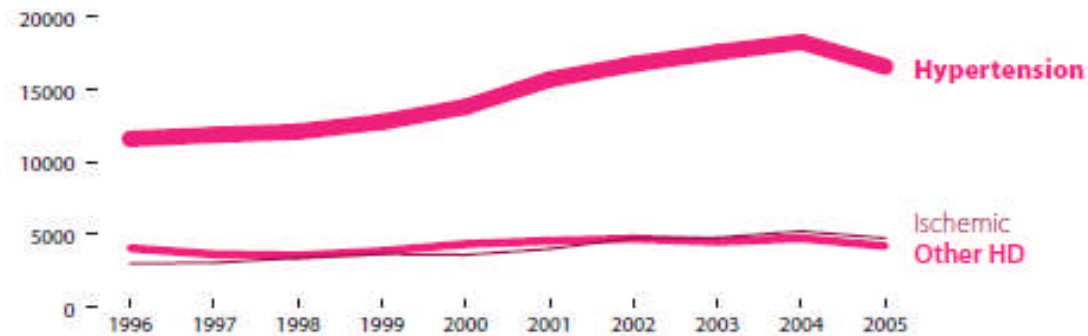
Per 100,000 HIV/AIDS SPARCS Discharges



Source: SPARCS

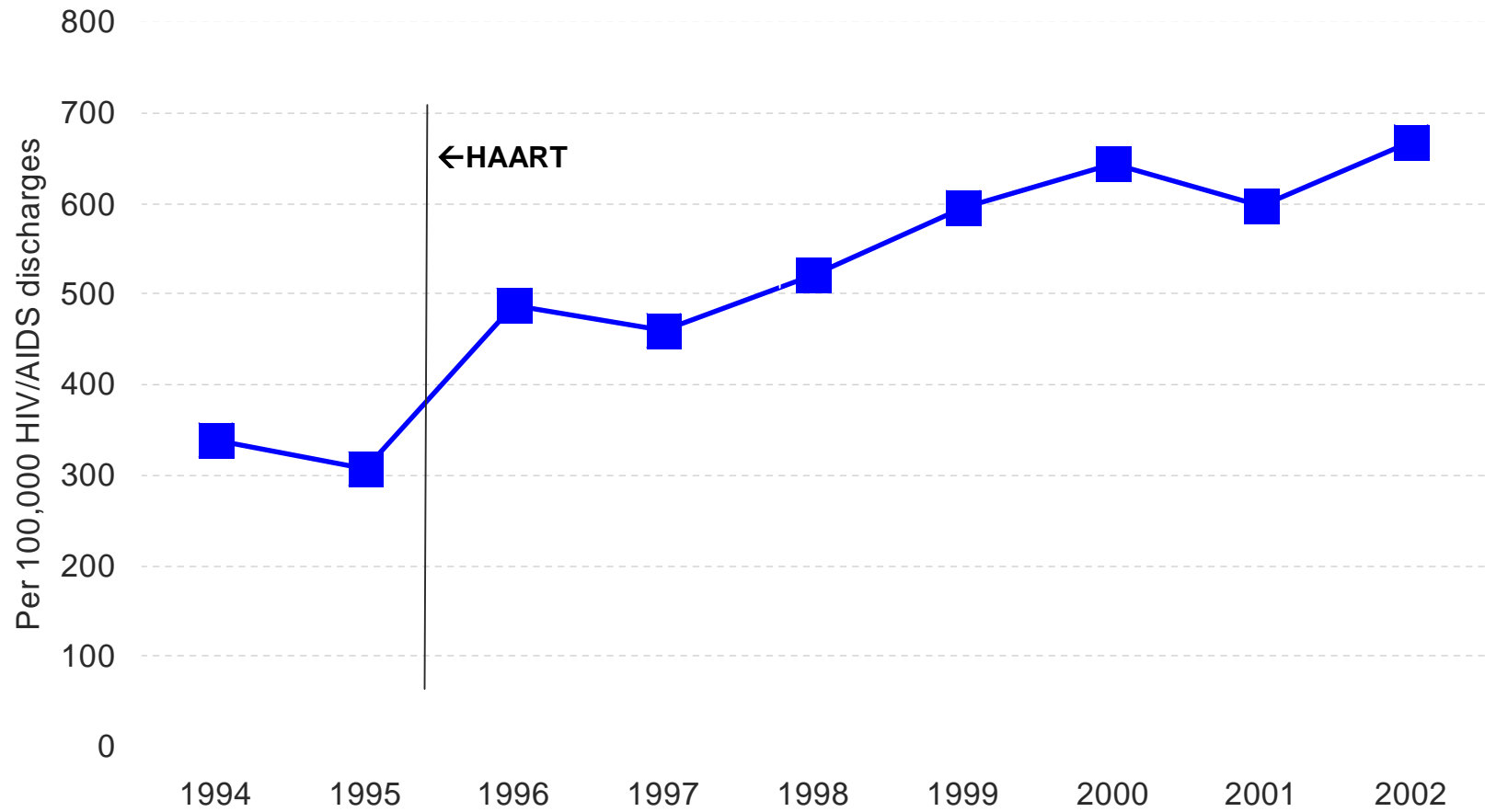
Diagnoses of Cardiovascular Diseases among PLWHA in NYS, 1996-2005

Per 100,000 HIV/AIDS Medicaid recipients



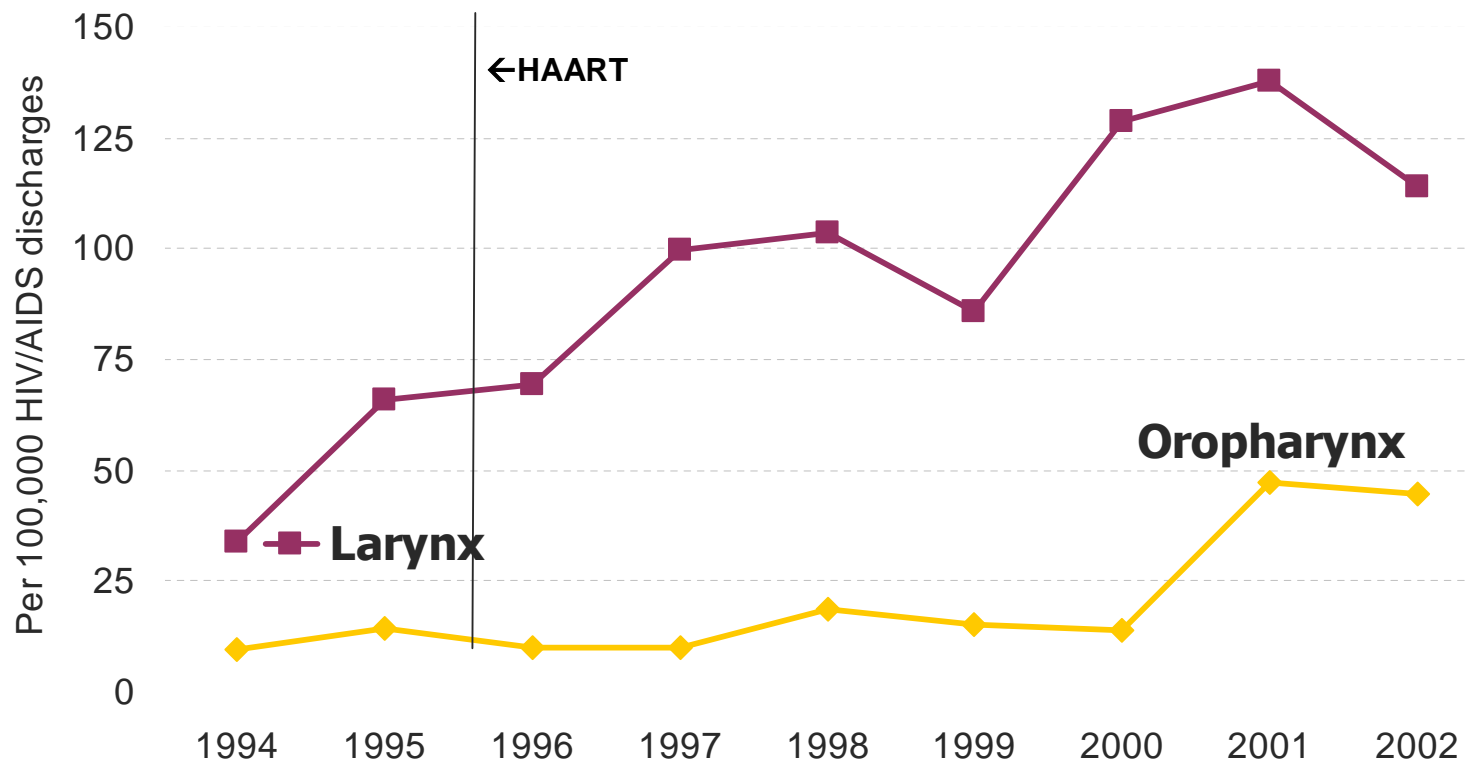
Source: Medicaid

Lung Cancer Among PLWHA, NYS, 1994-2002



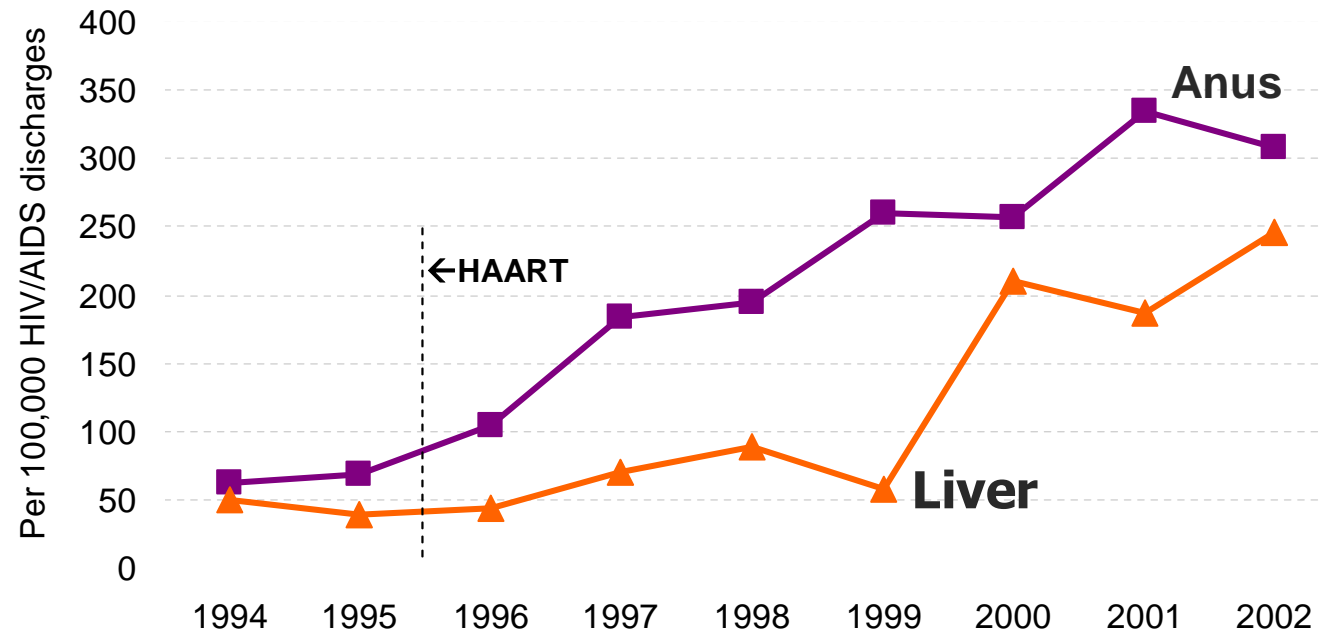
**Source:
SPARCS**

Cancers of the Larynx and Oropharynx Among PLWHA, NYS, 1994-2002



Source: SPARCS

Cancers of the Anus & Liver Among PLWHA, NYS 1994-2002



Source: SPARCS

Modifiable Risk Factors for Chronic Diseases

- Smoking
- Physical activity
- Diet

And among PLWHA..

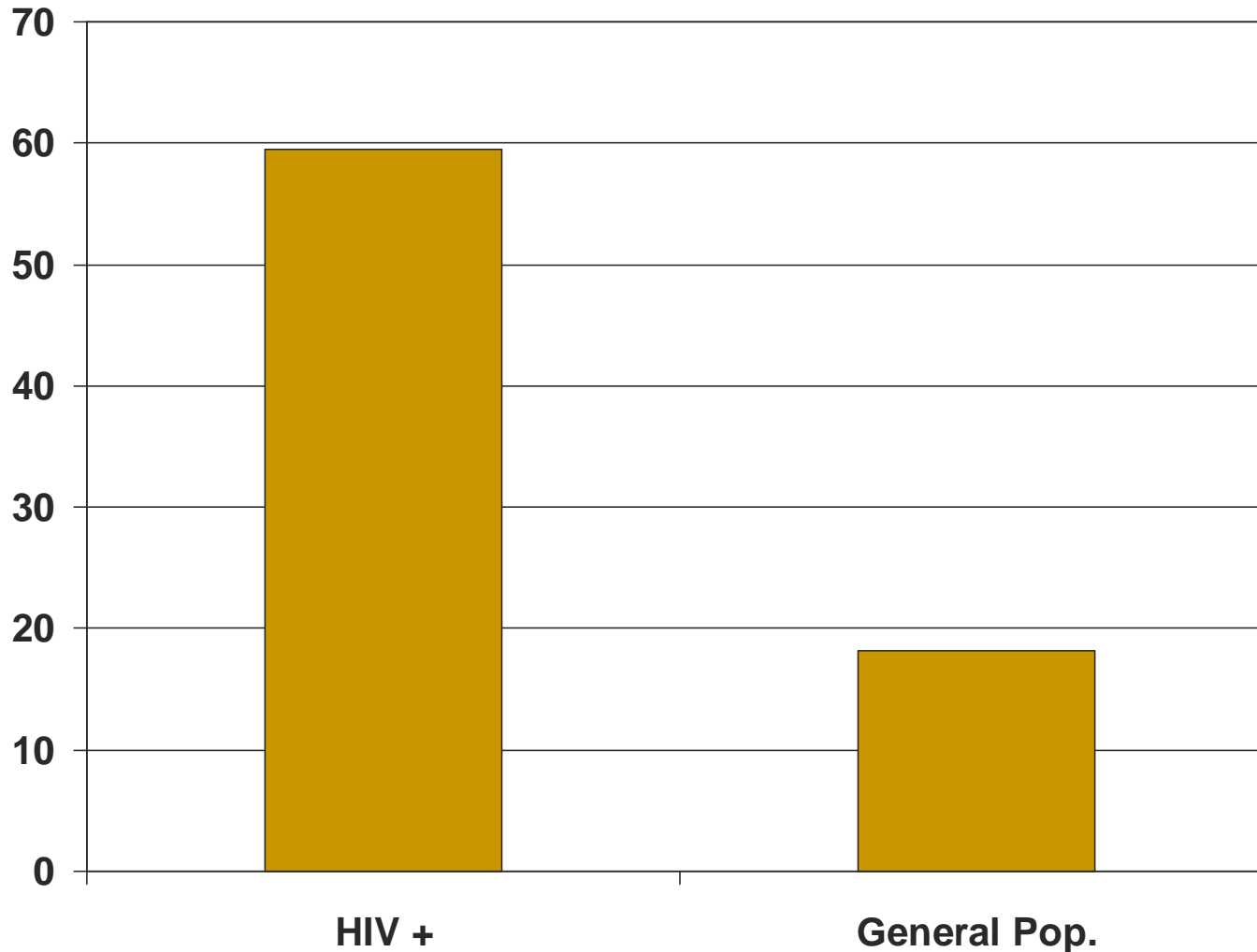
high prevalence of HPV, HCV, HBV...

Smoking Prevalence among PLWHA Receiving Care in NYS 2005

Use Status	N	%
Currently Use	638	59.2
Used in the Past	264	24.5
Never Used	175	16.3
Total	1077	100

Tesoriero, J et al. Smoking Among HIV Positive New Yorkers: Prevalence, Frequency, and Opportunities for Cessation. AIDS Behav 2008; Sep. 7

Smoking Among PLWHA vs General Population in NYS



Sources: Tesoriero, J et al. and BRFSS, 2006



HIV and Smoking

It's time to live

People with HIV or AIDS are living longer, healthier lives. But, a lot of people with HIV or AIDS, between 60% and 70%, still smoke cigarettes. If you have HIV or AIDS and you smoke, you put a lot of extra stress on your body. Smoking can lead to many serious health problems — like lung cancer, stroke, and heart disease. Quitting is one of the biggest steps you can take to stay healthy.

This brochure shows how HIV and smoking work together to harm your body. It explains how your health gets better as soon as you quit smoking and gives you advice on how to quit.



and every part of your body.

HIV-positive smokers get more infections and have more serious health problems.

If you want to quit, we offer free help.

Call the New York State Smokers' Quitline at 1-866-NY-QUITS (1-866-697-8487).

Action Steps

- HIV and Aging Forum, 12/7/09
 - To elicit community-wide input into changes in policies/programs
- Retooling health care and prevention programs
- Survey of modifiable risk factors for chronic diseases among PLWHA in care
 - Physical activity
 - Diet
 - Smoking



Action Steps

- Partnerships with relevant non-HIV agencies and initiatives
 - NYS Office for the Aging
 - ACRIA trainings to HIV providers and senior citizens centers across NY
 - NYC Office of the Aging
 - AARP
- Other...