



Department
of Health

Annual Performance Report State Systemic Improvement Plan Data and Target Setting Review December EICC Meeting

December 14, 2021

1

December 14, 2021

2

State Performance
Plan/Annual
Performance Report
(SPP/APR)



2

December 14, 2021

3

Brief Overview of SPP/APR

- Required by the Individuals with Disabilities Act (IDEA), the U.S. Department of Education's Office of Special Education Programs (OSEP) has directed all states to have a State Performance Plan/Annual Performance Report (SPP/APR).
- The intent of the SPP/APR is to function as both a progress report for OSEP and a report for the state's stakeholders.
- APR evaluates the state's efforts to implement the requirements and purposes of the Part C Early Intervention Program (EIP) of IDEA.
- APR is submitted annually to OSEP by February 1st on state performance on federally established compliance and performance indicators.
- States must report on progress in meeting OSEP's target of 100% for compliance indicators (Indicators 1, 7, and 8) and measurable and rigorous targets set by the state for performance indicators (Indicators 2, 3, 4, 5, 6, 9, 10, and 11).
- The IDEA further requires OSEP to review states' SPP/APRs each year and determine if the state: "Meets requirements" of the IDEA, or "Needs Assistance," "Needs Intervention," or "Needs Substantial Intervention" in implementing the requirements of the IDEA.
- All NYS EIP SPP/APRs are posted at https://www.health.ny.gov/statistics/community/infants_children/early_intervention/.



3

December 14, 2021

4

APR Compliance Indicators Targets 100%

Indicator 1. Timely service provision

Children with service initiated within 30 days after the family provides written consent for the services in the Individualized Family Service Plan (IFSP).

Indicator 7. Timely IFSP

Children with IFSPs initiated within 45 days after referral to the EIP.

Indicator 8. Timely transition steps and services

8A. IFSP with transition steps and services discussed with family at least 90 days prior to toddler's third birthday

8B. Notified the State and Local Education Agency at least 90 days prior to toddler's third birthday

8C. Transition conference conducted at least 90 days prior to the toddler's third birthday



4

December 14, 2021

5

APR Performance Indicators Targets set by states

- Indicator 2. Receive early intervention services in home or community-based setting
- Indicator 3. Child outcomes
 - 3A. Positive social emotional skills
 - 3B. Acquisition and use of knowledge and skills (including early language/communication)
 - 3C. Use of appropriate behaviors to meet their needs
- Indicator 4. Family outcomes
 - 4A. Know their rights
 - 4B. Effectively communicate their children's needs
 - 4C. Help their children develop and learn
- Indicator 5. Infants less than 1 with an Individualized Family Service Plan (IFSP)
- Indicator 6. Infants and toddlers less than 3 with an IFSP
- Indicator 9. Hearing requests that went to resolution sessions (not applicable for NY Part C)
- Indicator 10. Mediations held that resulted in mediation agreements
- Indicator 11. State Systemic Improvement Plan (SSIP) – positive family outcomes



5

December 14, 2021

6

Target Setting

- Target setting is the process states use, with broad stakeholder input, to determine measurable and rigorous benchmarks for results-based indicators.
- Establish expectations for performance throughout the state.
- Assist in assessing where the state's performance is strong, where performance is an issue, and where to focus improvement.
- Provide motivation for improving performance and celebrating success.
- Serve as guides for monitoring progress and determining if progress is on schedule and sustained over time.

https://dasycenter.org/wp-content/uploads/2021/09/DaSyECTA_TargetSettingGuide_Acc.pdf



6

December 14, 2021

7

2019-2020 APR
Submitted February 1, 2021



7

December 14, 2021

8

8

Part C Results-Driven Accountability Determinations

| OSEP Determination* | Issued in 2014 (PY 2012-13) | Issued in 2015 (PY 2013-14) | Issued in 2016 (PY 2014-15) | Issued in 2017 (PY 2015-16) | Issued in 2018 (PY 2016-17) | Issued in 2019 (PY 2017-18) | Issued in 2020 (PY 2018-19) | Issued in 2021 (PY 2019-20) |
|--|--------------------------------|--------------------------------|--------------------------------|--------------------------------|--------------------------------|--------------------------------|--------------------------------|--------------------------------|
| Meets Requirements | 36 States | 22 States | 30 States | 30 States NY: 84.38% | 31 States | 28 States NY: 90.97% | 27 States | 29 States |
| Needs Assistance (one year) | 16 States NY: 70.00% | 21 States | 3 States | 7 States | 8 States NY: 78.13% | 12 States | 8 States NY: 78.47% | 8 States |
| Needs Assistance (two or more consecutive years) | Category Not Available | 12 States NY: 71.88% | 22 States NY: 78.47% | 18 States | 17 States | 17 States | 19 States | 19 States NY: 78.47% |
| Needs Intervention (one year) | 4 States | 0 | 0 | 1 State | 0 | 0 | 2 States | 0 |
| Needs Substantial Intervention | Category Not Available | 1 State | 1 State | 0 | 0 | 0 | 0 | 0 |

*Meets Requirements = 80% and above
Needs Assistance = 60% to 80%
States and Territories

<https://sites.ed.gov/idea/>
<https://sites.ed.gov/idea/files/ideafactsheet-determinations-2021.pdf>



8

New York 2021 Part C Results-Driven Accountability Matrix

Results-Driven Accountability Percentage and Determination¹

| Percentage (%) | Determination |
|----------------|------------------|
| 78.47 | Needs Assistance |

2020 Determination: 78.47

Needs Assistance

Results and Compliance Overall Scoring

| | Total Points Available | Points Earned | Score (%) |
|-------------------|------------------------|---------------|-----------|
| Results | 8 | 5 | 62.5 |
| Compliance | 18 | 17 | 94.44 |

Meets Requirements = 80% and above

Needs Assistance = 60% to 80%



2021 Part C Compliance Matrix

| Part C Compliance Indicator ¹ | Performance (%) | Full Correction of Findings of Noncompliance Identified in FFY 2018 | Score |
|--|-----------------|---|-------|
| Indicator 1: Timely service provision | 83.1 | Yes | 1 |
| Indicator 7: 45-day timeline | 95.25 | Yes | 2 |
| Indicator 8A: Timely transition plan | 99.9 | Yes | 2 |
| Indicator 8B: Transition notification | 98.37 | Yes | 2 |
| Indicator 8C: Timely transition conference | 97.45 | Yes | 2 |
| Timely and Accurate State-Reported Data | 100 | | 2 |
| Timely State Complaint Decisions | 100 | | 2 |
| Timely Due Process Hearing Decisions | 100 | | 2 |
| Longstanding Noncompliance | | | 2 |
| Specific Conditions | None | | |
| Uncorrected identified noncompliance | None | | |



December 14, 2021

11

I. Results Component — Data Quality

| | |
|--|----------|
| Data Quality Total Score (completeness + anomalies) | 3 |
|--|----------|

(a) Data Completeness: The percent of children included in your State's 2018 Outcomes Data (Indicator C3)

| | |
|---|--------------|
| Number of Children Reported in Indicator C3 (i.e. outcome data) | 6652 |
| Number of Children Reported Exiting in 618 Data (i.e. 618 exiting data) | 30150 |
| Percentage of Children Exiting who are Included in Outcome Data (%) | N/A |
| Data Completeness Score² | 2 |

(b) Data Anomalies: Anomalies in your State's FFY 2019 Outcomes Data

| | |
|---|----------|
| Data Anomalies Score³ | 1 |
|---|----------|

II. Results Component — Child Performance

| | |
|---|----------|
| Child Performance Total Score (state comparison + year to year comparison) | 2 |
|---|----------|

(a) Comparing your State's 2019 Outcomes Data to other State's 2019 Outcomes Data

| | |
|--|----------|
| Data Comparison Score⁴ | 1 |
|--|----------|

(b) Comparing your State's FFY 2019 data to your State's FFY 2018 data

| | |
|---|----------|
| Performance Change Score⁵ | 1 |
|---|----------|



11

December 14, 2021

12

Anomalies in Child Outcome Data (Background)

- Child outcome A
Positive social emotional skills
- Child outcome B
Acquisition and use of knowledge and skills
- Child outcome C
Use of appropriate behaviors to meet their needs

Entry rating on Child Outcome A

To what extent does this child show **POSITIVE SOCIAL EMOTIONAL SKILLS (INCLUDING RELATIONSHIPS)** APPROPRIATE FOR HIS OR HER AGE and ACROSS A VARIETY OF SETTINGS AND SITUATIONS?

| | | | | | | | |
|------------|---|----------|---|----------|---|---------|---|
| Completely | 6 | Somewhat | 4 | Emerging | 2 | Not Yet | 1 |
| 7 | | 5 | | 3 | | | |

Exit rating on Child Outcome A

(1) To what extent does this child show **POSITIVE SOCIAL EMOTIONAL SKILLS (INCLUDING RELATIONSHIPS)** APPROPRIATE FOR HIS OR HER AGE and ACROSS A VARIETY OF SETTINGS AND SITUATIONS?

| | | | | | | | |
|------------|---|----------|---|----------|---|---------|---|
| Completely | 6 | Somewhat | 4 | Emerging | 2 | Not Yet | 1 |
| 7 | | 5 | | 3 | | | |

(2) Has the child shown ANY new skills or behaviors related to **POSITIVE SOCIAL EMOTIONAL SKILLS (INCLUDING RELATIONSHIPS)** since the ENTRY outcomes form was completed? Please choose Yes or No below.

YES NO

If Yes, briefly describe progress made, including new skills, behaviors, and/or functional abilities.

Summary Statement 1 (SS1) = 100% * (c + d)/(a + b + c + d)
 Summary Statement 2 (SS2) = 100% * (d + e)/(a + b + c + d + e)

| Entry Rate | Exit Rate | New Skills? | OSEP Category |
|------------|-----------------------|-------------|--|
| 1 | 1 | NO | a: Children who did not improve functioning |
| 1 | 1 | YES | b: Children who improved functioning but not sufficient to move nearer to functioning comparable to same age peers |
| 2 | 1 or 2 | NO | a: Children who did not improve functioning |
| 2 | 1 or 2 | YES | b: Children who improved functioning but not sufficient to move nearer to functioning comparable to same age peers |
| 3 | 1 or 2 or 3 | NO | a: Children who did not improve functioning |
| 3 | 1 or 2 or 3 | YES | b: Children who improved functioning but not sufficient to move nearer to functioning comparable to same age peers |
| 4 | 1 or 2 or 3 or 4 | NO | a: Children who did not improve functioning |
| 4 | 1 or 2 or 3 or 4 | YES | b: Children who improved functioning but not sufficient to move nearer to functioning comparable to same age peers |
| 5 | 1 or 2 or 3 or 4 or 5 | NO | a: Children who did not improve functioning |
| 5 | 1 or 2 or 3 or 4 or 5 | YES | b: Children who improved functioning but not sufficient to move nearer to functioning comparable to same age peers |
| 6 | 1 or 2 or 3 or 4 or 5 | NO | a: Children who did not improve functioning |
| 6 | 1 or 2 or 3 or 4 or 5 | YES | b: Children who improved functioning but not sufficient to move nearer to functioning comparable to same age peers |
| 7 | 1 or 2 or 3 or 4 or 5 | NO | a: Children who did not improve functioning |
| 7 | 1 or 2 or 3 or 4 or 5 | YES | b: Children who improved functioning but not sufficient to move nearer to functioning comparable to same age peers |
| 1 | 2 or 3 or 4 or 5 | NA | c: Children who improved functioning to a level nearer to same-aged peers but did not reach it |
| 2 | 3 or 4 or 5 | NA | c: Children who improved functioning to a level nearer to same-aged peers but did not reach it |
| 3 | 4 or 5 | NA | c: Children who improved functioning to a level nearer to same-aged peers but did not reach it |
| 4 | 5 | NA | c: Children who improved functioning to a level nearer to same-aged peers but did not reach it |
| 1 | 6 or 7 | NA | d: Children who improved functioning to reach a level comparable to same-aged peers |
| 2 | 6 or 7 | NA | d: Children who improved functioning to reach a level comparable to same-aged peers |
| 3 | 6 or 7 | NA | d: Children who improved functioning to reach a level comparable to same-aged peers |
| 4 | 6 or 7 | NA | d: Children who improved functioning to reach a level comparable to same-aged peers |
| 5 | 6 or 7 | NA | d: Children who improved functioning to reach a level comparable to same-aged peers |
| 6 | 6 or 7 | NA | e: Children who maintained functioning at a level comparable to same-aged peers |
| 7 | 6 or 7 | NA | e: Children who maintained functioning at a level comparable to same-aged peers |

https://www.health.ny.gov/community/infants_children/early_intervention/outcomes_survey/child/docs/cosf_exit_help.pdf



12

| Outcome\Category | | Mean | StDev | -1SD | +1SD | |
|------------------|------------|------|-------|------|-------|-----------|
| Outcome A\ | Category a | 2.24 | 1.92 | 3.89 | -1.97 | 7.13 5.81 |
| Outcome B\ | Category a | 1.85 | 1.57 | 3.8 | -2.23 | 6.58 5.37 |
| Outcome C\ | Category a | 1.91 | 1.59 | 4.08 | -2.5 | 7.11 5.67 |

| Outcome A — Positive Social Relationships | Category a | Outcome B — Knowledge and Skills | Category a | Outcome C — Actions to Meet Needs | Category a |
|---|------------|----------------------------------|------------|-----------------------------------|------------|
| State Performance | 487 | State Performance | 388 | State Performance | 432 |
| Performance (%) | 8.27 7.32 | Performance (%) | 6.88 5.83 | Performance (%) | 8.4 6.49 |
| Scores | 0 | Scores | 0 | Scores | 0 |

| | Total Score | Data Anomalies Score | Total Points Received in All Progress Areas |
|--------------|-------------|----------------------|---|
| Outcome A | 4 4 | 0 | 0 through 9 points |
| Outcome B | 4 4 | 1 | 10 through 12 points |
| Outcome C | 4 4 | 2 | 13 through 15 points |
| Outcomes A-C | 12 12 | 1 1 | |

13

| Child Outcome A - Positive Social Emotional (PY2019-2020) | | | | | | | | | | | | |
|---|------------|--------|---|-------|---|-------|---|-------|---|-------|------------------------------|-------|
| Total | category a | | 2 at entry; 2 at exit; No to new skills | | 3 at entry; 3 at exit; No to new skills | | 4 at entry; 4 at exit; No to new skills | | 5 at entry; 5 at exit; No to new skills | | Total that Remained the Same | |
| | # | % | # | % | # | % | # | % | # | % | # | % |
| 6,652 | 487 | 7.32 % | 40 | 8.2% | 106 | 21.8% | 37 | 7.6% | 86 | 17.7% | 269 | 55.2% |
| 5.81 (OSEP Mean + 386 % 1SD) 101 | | | | | | | | | | | | |
| Child Outcome B - Acquire and Use Knowledge and Skills (PY2019-2020) | | | | | | | | | | | | |
| Total | category a | | 2 at entry; 2 at exit; No to new skills | | 3 at entry; 3 at exit; No to new skills | | 4 at entry; 4 at exit; No to new skills | | 5 at entry; 5 at exit; No to new skills | | Total that Remained the Same | |
| | # | % | # | % | # | % | # | % | # | % | # | % |
| 6,652 | 388 | 5.83 % | 55 | 14.2% | 87 | 22.4% | 36 | 9.3% | 58 | 14.9% | 236 | 60.8% |
| 5.37 (OSEP Mean + 357 % 1SD) 31 | | | | | | | | | | | | |
| Child Outcome C - Take Appropriate Action to Meet Needs (PY2019-2020) | | | | | | | | | | | | |
| Total | category a | | 2 at entry; 2 at exit; No to new skills | | 3 at entry; 3 at exit; No to new skills | | 4 at entry; 4 at exit; No to new skills | | 5 at entry; 5 at exit; No to new skills | | Total that Remained the Same | |
| | # | % | # | % | # | % | # | % | # | % | # | % |
| 6,652 | 432 | 6.49 % | 57 | 13.2% | 103 | 23.8% | 48 | 11.1% | 51 | 11.8% | 259 | 60.0% |
| 5.67 (OSEP Mean + 377 % 1SD) 55 | | | | | | | | | | | | |

14

December 14, 2021 **15**

Scoring Percentages for the 10th and 90th Percentile for Each Outcome and Summary Statement, FFY 2019

| Percentiles | Outcome A SS1 | Outcome A SS2 | Outcome B SS1 | Outcome B SS2 | Outcome C SS1 | Outcome C SS2 |
|-------------|---------------|---------------|---------------|---------------|---------------|---------------|
| 10 | 45.87% | 37.59% | 54.17% | 29.32% | 55.83% | 37.57% |
| 90 | 83.39% | 69.62% | 81.86% | 55.63% | 86.62% | 76.68% |

Child outcome A
Positive social emotional skills

| Data Comparison Score | Total Points Received Across SS1 and SS2 |
|-----------------------|--|
| 0 | 0 through 4 points |
| 1 | 5 through 8 points |
| 2 | 9 through 12 points |

Child outcome B
Acquisition and use of knowledge and skills

Your State's Summary Statement Performance FFY 2019

| Summary Statement (SS) | Outcome A: Positive Social Relationships SS1 | Outcome A: Positive Social Relationships SS2 | Outcome B: Knowledge and Skills SS1 | Outcome B: Knowledge and Skills SS2 | Outcome C: Actions to meet needs SS1 | Outcome C: Actions to meet needs SS2 |
|------------------------|--|--|-------------------------------------|-------------------------------------|--------------------------------------|--------------------------------------|
| Performance (%) | 71.44 | 39.33 | 78.1 | 38.08 | 77.15 | 36.61 |
| Points | 1 | 1 | 1 | 1 | 1 | 0 |

Child outcome C
Use of appropriate behaviors to meet their needs

| | |
|---|----------|
| Total Points Across SS1 and SS2(*) | 5 |
| Your State's Data Comparison Score | 1 |

15

December 14, 2021 **16**

Comparing This Year's Data to Last Year's

| Summary Statement/Child Outcome | FFY 2018 N | FFY 2018 Summary Statement (%) | FFY 2019 N | FFY 2019 Summary Statement (%) | Difference between Percentages (%) | Std Error | z value | p-value | p<=.05 | Score: 0 = significant decrease 1 = no significant change 2 = significant increase |
|--|------------|--------------------------------|------------|--------------------------------|------------------------------------|-----------|---------|---------|--------|---|
| SS1/Outcome A: Positive Social Relationships | 2464 | 67.61 | 5791 | 71.44 | 3.82 | 0.0111 | 3.4333 | 0.0006 | Yes | 2 |
| SS1/Outcome B: Knowledge and Skills | 2682 | 74.65 | 6186 | 78.1 | 3.45 | 0.0099 | 3.481 | 0.0005 | Yes | 2 |
| SS1/Outcome C: Actions to meet needs | 2767 | 74.92 | 6292 | 77.15 | 2.23 | 0.0098 | 2.2736 | 0.023 | Yes | 2 |
| SS2/Outcome A: Positive Social Relationships | 2951 | 43.68 | 6652 | 39.33 | -4.35 | 0.0109 | -3.987 | 0.0001 | Yes | 0 |
| SS2/Outcome B: Knowledge and Skills | 2951 | 40.29 | 6652 | 38.08 | -2.21 | 0.0108 | -2.0459 | 0.0408 | Yes | 0 |
| SS2/Outcome C: Actions to meet needs | 2951 | 38.29 | 6652 | 36.61 | -1.69 | 0.0107 | -1.573 | 0.1157 | No | 1 |

| Performance Change Score | Cut Points for Change Over Time in Summary Statements Total Score |
|--------------------------|---|
| 0 | Lowest score through 3 |
| 1 | 4 through 7 |
| 2 | 8 through highest |

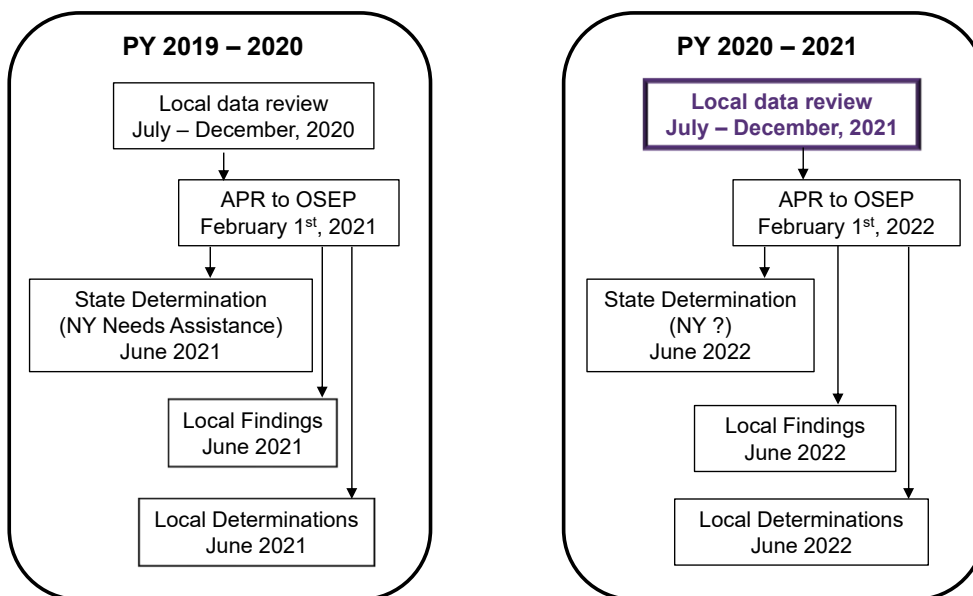
| | | |
|--|----------|---|
| Total Points Across SS1 and SS2 | 6 | 7 |
| Your State's Performance Change Score | 1 | 1 |

16

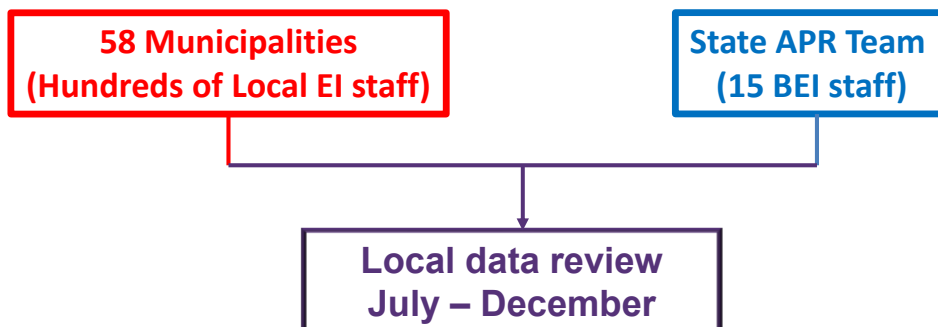
**PY 2020-2021 APR
Due February 1, 2022**



A full APR cycle



APR Local Data Review Effort for Complete and Accurate Reporting



APR Indicators

1. Timely services
2. Receive early intervention services in home or community-based setting
3. Child outcomes
4. Family outcomes
5. Infants less than 1 with an Individualized Family Service Plan (IFSP)
6. Infants and toddlers less than 3 with an IFSP
7. Timely IFSP
8. Timely transition steps and services
9. Hearing requests that went to resolution sessions (not applicable for NY)
10. Mediations held that resulted in mediation agreements
11. State Systemic Improvement Plan (SSIP) – positive family outcomes

December 14, 2021

21

Updated Delay Reasons for Compliance Indicators

Indicator 1 – Timely Service Initiation

Non-discountable delay reasons:

- Provider capacity issue
- Provider scheduling problem/wait list
- Other

Discountable delay reasons:

- Family – problem scheduling appointment
- Family – missed/canceled appointment
- Family – delayed response/consent for appointment
- Weather/other emergency declared
- **COVID-19 (effective as of 1/1/2020)**
- Intermittent service and/or frequency per IFSP team decision
- Natural disaster

Indicator 8 – Timely Transition Steps

Family Delayed or Weather/Emergency (YES or NO)

- YES
- NO
- **COVID-19 (effective as of 1/1/2020)**

Indicator 7 – Timely initial IFSP meeting

Non-discountable delay reasons:

- Evaluator sent report late
- Evaluator conducted late evaluation
- EIO/D referred child late to ISC
- EIO/D scheduling problem
- ISC high caseload
- Translation difficulty
- Child eligible through mediation/impartial hearing
- Due process
- ISC unable to facilitate transportation to eval and/or IFSP for family

Discountable delay reasons:

- Family - problem scheduling evaluation
- Family - missed/canceled evaluation or IFSP mtg
- Family - unresponsive/moved
- Weather/emergency declared
- **COVID-19 (effective as of 1/1/2020)**
- EIO/D encountered foster care system problem
- Natural Disaster



21

December 14, 2021

22

Indicator 1: Timely Service Initiation


- OSEP Definition: Percent of infants and toddlers with IFSPs who receive the early intervention services on their IFSPs in a timely manner
- NYS has set the benchmark for timely services = 30 days
- Data are from NYEIS
- Supplemented by delay reasons provided by the municipalities for services that did not occur within 30 days from the IFSP meeting date or the service authorization amendment start date



22

| December 14, 2021 | | | | | | | 23 |
|--|--------------------------------|-------------------------------|-------------------------------------|--|---------|--------|------------------|
| Indicator 1: Timely Service Initiation | | | | | | | |
| Program Year | Sampled Children (Denominator) | Children with Timely Services | Children with Discountable Delays** | Children with Timely and Discountable Delayed Services (Numerator) | Percent | Target | National Mean*** |
| 2013-2014 | 10,700 | 8,345 | 1,158 | 9,503 | 88.8% | 100% | 96% |
| 2014-2015 | 11,165 | 8,739 | 1,250 | 9,989 | 89.5% | 100% | 95% |
| 2015-2016 | 12,027 | 9,004 | 1,419 | 10,423 | 86.7% | 100% | 94% |
| 2016-2017 | 11,617 | 8,509 | 1,452 | 9,961 | 85.7% | 100% | 95% |
| 2017-2018 | 11,141 | 8,130 | 1,476 | 9,606 | 86.2% | 100% | 95% |
| 2018-2019 | 11,603 | 8,033 | 1,562 | 9,595 | 82.7% | 100% | 95% |
| 2019-2020 | 8,578 | 4,805 | 2,323 | 7,128 | 83.1% | 100% | N/A |
| 2020-2021* | 10,613 | 7,032 | 2,537 | 9,569 | 90.2% | 100% | N/A |


*Preliminary
 **In PY2020-2021, there were 811 children with their service initiation delayed by COVID-19.
 N/A – Not Available
 ***<https://sites.ed.gov/idea/files/PartC-IndicatorAnalysis-FFY2018.pdf>



23

| December 14, 2021 | | | | | | | 24 | | |
|---|--------------|-------------|---------------|-------------|--|--------------|-------|---------------|-------|
| APR Indicator 1: Delayed Service Initiation | | | | | | | | | |
| Service Initiation | PY 2019-2020 | | PY 2020-2021* | | Service Type | PY 2019-2020 | | PY 2020-2021* | |
| | # | % | # | % | | # | % | # | % |
| Timely ≤ 30 days | 17,131 | 76.0% | 19,516 | 80.0% | Speech Language | 611 | 39.8% | 385 | 37.5% |
| Discountable delay** | 3,529 | 15.7% | 3,590 | 14.7% | OT | 308 | 20.1% | 197 | 19.2% |
| Non-discountable delay | 1,869 | 8.3% | 1,281 | 5.3% | PT | 242 | 15.8% | 82 | 8.0% |
| Total new services | 22,529 | 100% | 24,387 | 100% | Special Instruction | 262 | 17.1% | 229 | 22.3% |
| | | | | | Family Training | 16 | 1.0% | 24 | 2.3% |
| | | | | | Group | 21 | 1.4% | 7 | 0.7% |
| | | | | | Social Work | 24 | 1.6% | 6 | 0.6% |
| | | | | | Service Coordination | 41 | 2.7% | 88 | 8.6% |
| | | | | | Assistive Technology | 0 | 0.0% | 1 | 0.1% |
| | | | | | Nutrition | 4 | 0.3% | 2 | 0.2% |
| | | | | | Family Counseling | 0 | 0.0% | 0 | 0.0% |
| | | | | | Vision | 7 | 0.5% | 4 | 0.4% |
| | | | | | Audiology | 0 | 0.0% | 3 | 0.3% |
| | | | | | Total services delayed by capacity issue | 1,536 | 100% | 1,028 | 100% |

*Preliminary
 **In PY2020-2021, there were 1,074 services delayed by COVID-19.



24

Indicator 2: Natural Environment

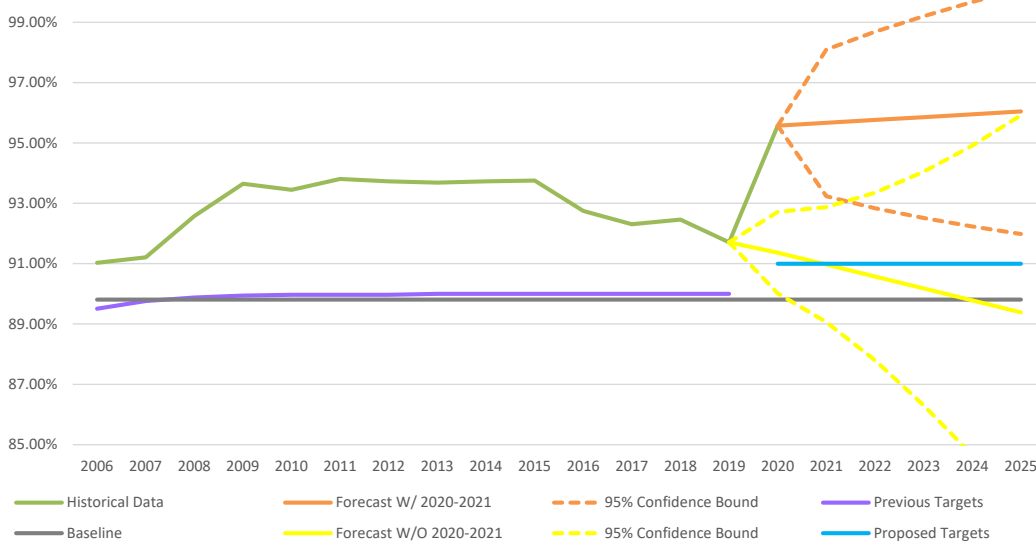
| Program Year | Total Children Enrolled on (Oct. 1 st) | Children Served in Home or Community | Percent | Target | National Mean** |
|--------------|--|--------------------------------------|---------|--------|-----------------|
| 2013-2014 | 28,325 | 26,537 | 93.7% | 90.0% | 97% |
| 2014-2015 | 28,852 | 27,043 | 93.7% | 90.0% | 97% |
| 2015-2016 | 30,025 | 28,150 | 93.8% | 90.0% | 97% |
| 2016-2017 | 30,317 | 28,119 | 92.7% | 90.0% | 98% |
| 2017-2018 | 31,097 | 28,704 | 92.3% | 90.0% | 98% |
| 2018-2019 | 31,202 | 28,849 | 92.5% | 90.0% | 98% |
| 2019-2020 | 31,152 | 28,569 | 91.7% | 90.0% | N/A |
| 2020-2021 | 24,988 | 23,882 | 95.6% | TBD | N/A |

N/A – Not Available. TBD – To Be Determined.

**<https://sites.ed.gov/idea/files/PartC-IndicatorAnalysis-FFY2018.pdf>



Proposed APR Indicator 2 Baseline and Targets (PY2020-2025)



December 14, 2021

27

Proposed targets for Indicator 2

| Program Year | Historical Data | Forecast W/ 2020-2021 | Forecast W/O 2020- 2021 | Baseline | Previous Target | Proposed Targets |
|--------------|-----------------|--------------------------|----------------------------|----------|--------------------|---------------------|
| 2006-2007 | 91.03% | | | 89.81% | 89.51% | |
| 2007-2008 | 91.21% | | | 89.81% | 89.76% | |
| 2008-2009 | 92.58% | | | 89.81% | 89.88% | |
| 2009-2010 | 93.65% | | | 89.81% | 89.94% | |
| 2010-2011 | 93.45% | | | 89.81% | 89.97% | |
| 2011-2012 | 93.81% | | | 89.81% | 89.97% | |
| 2012-2013 | 93.73% | | | 89.81% | 89.97% | |
| 2013-2014 | 93.69% | | | 89.81% | 90.00% | |
| 2014-2015 | 93.73% | | | 89.81% | 90.00% | |
| 2015-2016 | 93.76% | | | 89.81% | 90.00% | |
| 2016-2017 | 92.75% | | | 89.81% | 90.00% | |
| 2017-2018 | 92.30% | | | 89.81% | 90.00% | |
| 2018-2019 | 92.46% | | | 89.81% | 90.00% | |
| 2019-2020 | 91.71% | | | 89.81% | 90.00% | |
| 2020-2021 | 95.57% | | 91.36% | 89.81% | | 91.00% |
| 2021-2022 | | 95.67% | 90.97% | 89.81% | | 91.00% |
| 2022-2023 | | 95.76% | 90.57% | 89.81% | | 91.00% |
| 2023-2024 | | 95.86% | 90.18% | 89.81% | | 91.00% |
| 2024-2025 | | 95.95% | 89.78% | 89.81% | | 91.00% |
| 2025-2026 | | 96.05% | 89.39% | 89.81% | | 91.00% |

Children
served in
home or
community



27

December 14, 2021

28

OSEP Definitions for Indicator 3 Child Outcomes

- 3A: Percent of infants and toddlers with IFSPs who demonstrate improved positive social-emotional skills (including social relationships)
- 3B: Percent of infants and toddlers with IFSPs who demonstrate improved acquisition and use of knowledge and skills (including early language/communication)
- 3C: Percent of infants and toddlers with IFSPs who demonstrate improved use of appropriate behaviors to meet their needs



28

December 14, 2021

29

Indicator 3: Child Outcomes

- Based on a sample of infants and toddlers each year
- Infants and toddlers must receive at least 6 months of EI services
- Child Outcome Summary (COS) form completed at initial IFSP for entry COS form and close to transition for exit COS form
 - Scores from 1 to 7 for each of the three outcome areas

| Completely | | Somewhat | | Emerging | | Not Yet |
|------------|---|----------|---|----------|---|---------|
| 7 | 6 | 5 | 4 | 3 | 2 | 1 |

- Summarize the entry and exit scores into OSEP progress categories

- | |
|---|
| a. Infants and toddlers who did not improve functioning |
| b. Infants and toddlers who improved functioning but not sufficient to move nearer to functioning comparable to same-aged peers |
| c. Infants and toddlers who improved functioning to a level nearer to same-aged peers but did not reach it |
| d. Infants and toddlers who improved functioning to reach a level comparable to same-aged peers |
| e. Infants and toddlers who maintained functioning at a level comparable to same-aged peers |



29

December 14, 2021

30

Summary Statements

- Summary Statement 1: the percent of children who made improvements in the area, among children who **entered** the early intervention program **below** age expectation level (excludes children who entered at age expectation in that area)

$$\frac{c + d}{a + b + c + d}$$

- Summary Statement 2: the percent of children who **exited** the early intervention program **at** age expectation among all children in the sample

$$\frac{d + e}{a + b + c + d + e}$$



30

December 14, 2021

31

Indicator 3A: Social Emotional

| Program Year | Total Children Surveyed | % OSEP Category a | % OSEP Category b | % OSEP Category c | % OSEP Category d | % OSEP Category e |
|--------------|-------------------------|-------------------|-------------------|-------------------|-------------------|-------------------|
| 2013-2014 | 452 | 4.6% | 28.1% | 27.0% | 18.6% | 21.7% |
| 2014-2015 | 1,096 | 3.9% | 22.4% | 28.8% | 25.4% | 19.4% |
| 2015-2016 | 1,472 | 6.9% | 22.6% | 25.5% | 26.1% | 19.0% |
| 2016-2017 | 1,315 | 8.3% | 25.9% | 24.9% | 24.0% | 17.0% |
| 2017-2018 | 1,357 | 6.9% | 22.3% | 26.1% | 26.5% | 18.3% |
| 2018-2019 | 2,951 | 8.3% | 18.8% | 29.3% | 27.2% | 16.5% |
| 2019-2020 | 6,652 | 7.3% | 17.5% | 35.8% | 26.4% | 12.9% |
| 2020-2021* | 6,252 | 7.6% | 19.0% | 34.4% | 26.6% | 12.3% |

a. Infants and toddlers who did not improve functioning

b. Infants and toddlers who improved functioning but not sufficient to move nearer to functioning comparable to same-aged peers

c. Infants and toddlers who improved functioning to a level nearer to same-aged peers but did not reach it

d. Infants and toddlers who improved functioning to reach a level comparable to same-aged peers

e. Infants and toddlers who maintained functioning at a level comparable to same-aged peers

*Preliminary data.



31

December 14, 2021

32

Indicator 3A1: Social Emotional

Summary Statement 1

| Program Year | Total Children Below Age Expectation | Children with Improved Social Emotional Skills | Percent | Target | National Mean** | Child outcome A: Positive social emotional skills |
|--------------|--------------------------------------|--|---------|--------|-----------------|---|
| 2013-2014 | 354 | 206 | 58.2% | 58.2% | 65% | |
| 2014-2015 | 883 | 594 | 67.3% | 59.0% | 66% | |
| 2015-2016 | 1,193 | 759 | 63.6% | 60.0% | 65% | SS1: the percent of children who made improvements $\frac{c + d}{a + b + c + d}$ |
| 2016-2017 | 1,092 | 643 | 58.9% | 61.0% | 66% | |
| 2017-2018 | 1,109 | 713 | 64.3% | 62.0% | 66% | |
| 2018-2019 | 2,464 | 1,666 | 67.6% | 63.0% | 66% | |
| 2019-2020 | 5,791 | 4,137 | 71.4% | 64.0% | N/A | |
| 2020-2021* | 5,538 | 3,855 | 69.6% | TBD | N/A | |

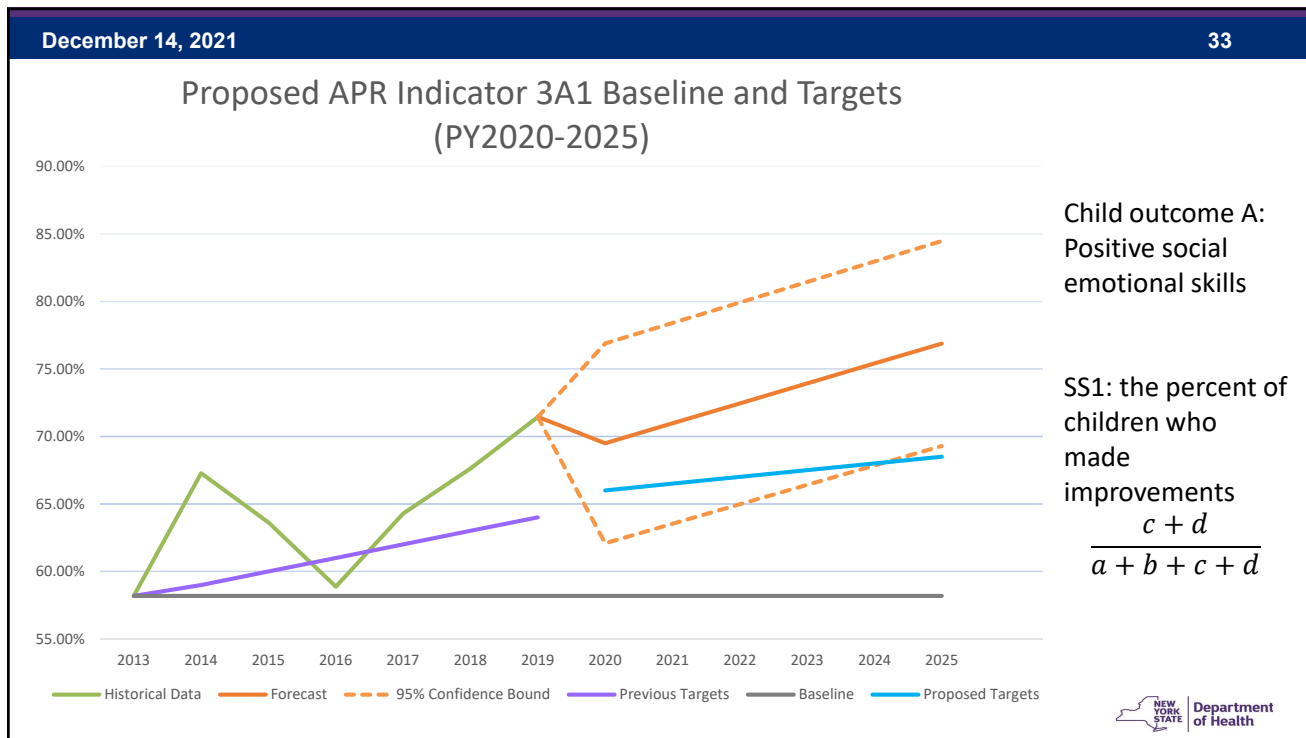
*Preliminary data.

N/A – Not Available. TBD – To Be Determined.

**<https://sites.ed.gov/idea/files/PartC-IndicatorAnalysis-FFY2018.pdf>



32



33

December 14, 2021 34

Proposed targets for Indicator 3A1

| Program Year | Historical Data | Forecast | Baseline | Previous Target | Proposed Targets |
|--------------|-----------------|----------|----------|-----------------|------------------|
| 2013-2014 | 58.19% | | 58.19% | 58.19% | |
| 2014-2015 | 67.27% | | 58.19% | 59.00% | |
| 2015-2016 | 63.62% | | 58.19% | 60.00% | |
| 2016-2017 | 58.88% | | 58.19% | 61.00% | |
| 2017-2018 | 64.29% | | 58.19% | 62.00% | |
| 2018-2019 | 67.61% | | 58.19% | 63.00% | |
| 2019-2020 | 71.44% | | 58.19% | 64.00% | |
| 2020-2021 | | 69.49% | 58.19% | | 66.00% |
| 2021-2022 | | 70.97% | 58.19% | | 66.50% |
| 2022-2023 | | 72.45% | 58.19% | | 67.00% |
| 2023-2024 | | 73.92% | 58.19% | | 67.50% |
| 2024-2025 | | 75.40% | 58.19% | | 68.00% |
| 2025-2026 | | 76.88% | 58.19% | | 68.50% |

Child outcome A:
Positive social emotional skills

SS1: the percent of children who made improvements

$$\frac{c + d}{a + b + c + d}$$

NEW YORK STATE Department of Health

34

Indicator 3A2: Social Emotional

Summary Statement 2

| Program Year | Total Children Surveyed | Children with Social Emotional Skills at age expectation | Percent | Target | National Mean** |
|--------------|-------------------------|--|---------|--------|-----------------|
| 2013-2014 | 452 | 182 | 40.3% | 40.3% | 59% |
| 2014-2015 | 1,096 | 491 | 44.8% | 41.0% | 59% |
| 2015-2016 | 1,472 | 663 | 45.0% | 42.0% | 59% |
| 2016-2017 | 1,315 | 538 | 40.9% | 43.0% | 58% |
| 2017-2018 | 1,357 | 607 | 44.7% | 44.0% | 57% |
| 2018-2019 | 2,951 | 1,289 | 43.7% | 45.0% | 56% |
| 2019-2020 | 6,652 | 2,616 | 39.3% | 45.0% | N/A |
| 2020-2021* | 6,313 | 2,458 | 38.9% | TBD | N/A |

Child outcome A:
Positive social emotional skills

SS2: the percent of children exited at age expectation among all children in the sample

$$\frac{d + e}{a + b + c + d + e}$$

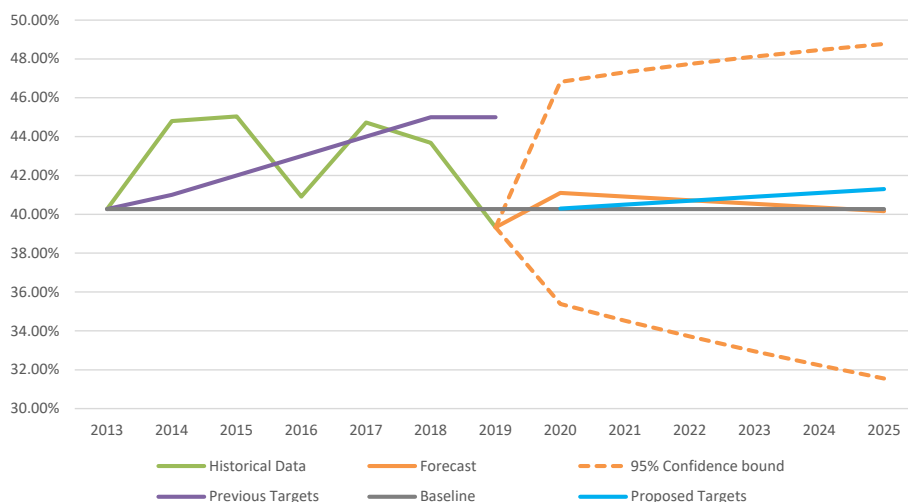
*Preliminary data.

N/A – Not Available. TBD – To Be Determined.

**<https://sites.ed.gov/idea/files/PartC-IndicatorAnalysis-FFY2018.pdf>



Proposed APR Indicator 3A2 Baseline and Targets (PY2020-2025)



Child outcomes A:
Positive social emotional skills

SS2: the percent of children exited at age expectation among all children in the sample

$$\frac{d + e}{a + b + c + d + e}$$



December 14, 2021

37

Proposed targets for Indicator 3A2

| Program Year | Historical Data | Forecast | Baseline | Previous Target | Proposed Targets |
|--------------|-----------------|----------|----------|-----------------|------------------|
| 2013-2014 | 40.27% | | 40.27% | 40.27% | |
| 2014-2015 | 44.80% | | 40.27% | 41.00% | |
| 2015-2016 | 45.04% | | 40.27% | 42.00% | |
| 2016-2017 | 40.91% | | 40.27% | 43.00% | |
| 2017-2018 | 44.73% | | 40.27% | 44.00% | |
| 2018-2019 | 43.68% | | 40.27% | 45.00% | |
| 2019-2020 | 39.33% | | 40.27% | 45.00% | |
| 2020-2021 | | 41.10% | 40.27% | | 40.30% |
| 2021-2022 | | 40.91% | 40.27% | | 40.50% |
| 2022-2023 | | 40.73% | 40.27% | | 40.70% |
| 2023-2024 | | 40.54% | 40.27% | | 40.90% |
| 2024-2025 | | 40.35% | 40.27% | | 41.10% |
| 2025-2026 | | 40.16% | 40.27% | | 41.30% |

Child outcomes A:
Positive social
emotional skills

SS2: the percent of
children exited at
age expectation
among all children
in the sample

$$\frac{d + e}{a + b + c + d + e}$$



37

December 14, 2021

38

Indicator 3B: Knowledge and Skills

| Program Year | Total Children Surveyed | % OSEP Category a | % OSEP Category b | % OSEP Category c | % OSEP Category d | % OSEP Category e |
|--------------|-------------------------|-------------------|-------------------|-------------------|-------------------|-------------------|
| 2013-2014 | 452 | 4.2% | 22.3% | 34.7% | 31.0% | 7.7% |
| 2014-2015 | 1,096 | 3.3% | 19.3% | 37.2% | 28.9% | 11.2% |
| 2015-2016 | 1,470 | 5.7% | 16.5% | 36.0% | 29.8% | 12.0% |
| 2016-2017 | 1,315 | 5.8% | 19.2% | 33.2% | 30.3% | 11.6% |
| 2017-2018 | 1,355 | 6.6% | 16.5% | 37.6% | 29.1% | 10.3% |
| 2018-2019 | 2,951 | 6.9% | 16.2% | 36.7% | 31.2% | 9.1% |
| 2019-2020 | 6,652 | 5.8% | 14.5% | 41.6% | 31.1% | 7.0% |
| 2020-2021* | 6,252 | 6.9% | 14.5% | 41.8% | 29.5% | 7.3% |

a. Infants and toddlers who did not improve functioning

b. Infants and toddlers who improved functioning but not sufficient to move nearer to functioning comparable to same-aged peers

c. Infants and toddlers who improved functioning to a level nearer to same-aged peers but did not reach it

d. Infants and toddlers who improved functioning to reach a level comparable to same-aged peers

e. Infants and toddlers who maintained functioning at a level comparable to same-aged peers

*Preliminary data.



38

Indicator 3B1: Knowledge and Skills

Summary Statement 1

| Program Year | Total Children Below Age Expectation | Children with Improved Knowledge | Percent | Target | National Mean** |
|--------------|--------------------------------------|----------------------------------|---------|--------|-----------------|
| 2013-2014 | 417 | 297 | 71.2% | 71.2% | 71% |
| 2014-2015 | 973 | 725 | 74.5% | 71.5% | 71% |
| 2015-2016 | 1,294 | 967 | 74.7% | 72.0% | 71% |
| 2016-2017 | 1,163 | 835 | 71.8% | 72.5% | 72% |
| 2017-2018 | 1,216 | 903 | 74.3% | 73.0% | 71% |
| 2018-2019 | 2,682 | 2,002 | 74.7% | 73.5% | 72% |
| 2019-2020 | 6,186 | 4,831 | 78.1% | 74.0% | N/A |
| 2020-2021* | 5,854 | 4,501 | 76.9% | TBD | N/A |

Child outcome B: Acquisition and use of knowledge and skills (including early language/communication)

SS1: the percent of children who made improvements

$$\frac{c + d}{a + b + c + d}$$

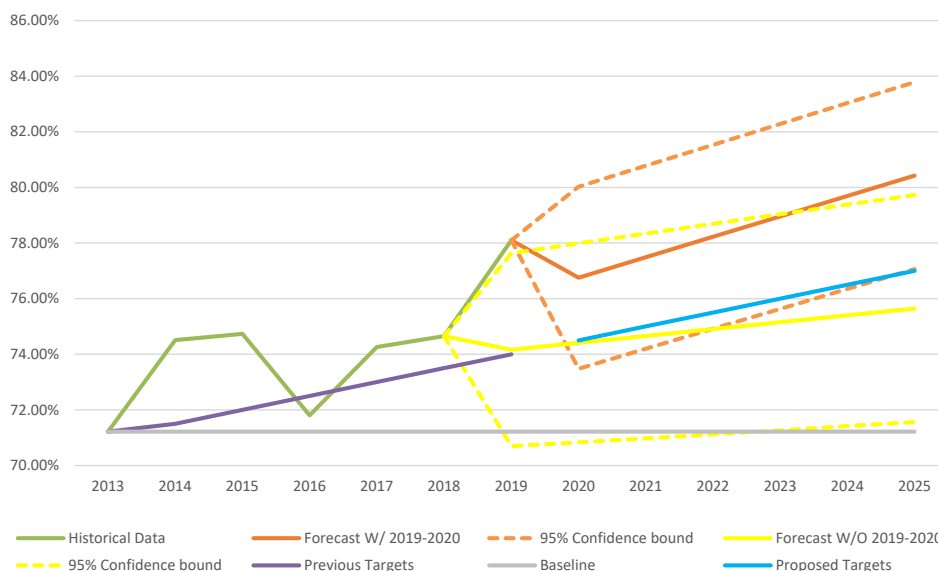
*Preliminary data.

N/A – Not Available. TBD – To Be Determined.

**<https://sites.ed.gov/idea/files/PartC-IndicatorAnalysis-FFY2018.pdf>



Proposed APR Indicator 3B1 Baseline and Targets (PY2020-2025)



Child outcome B: Acquisition and use of knowledge and skills (including early language/communication)

SS1: the percent of children who made improvements

$$\frac{c + d}{a + b + c + d}$$

Legend: Historical Data (green), Forecast W/ 2019-2020 (orange), 95% Confidence bound (dashed orange), Forecast W/O 2019-2020 (yellow), 95% Confidence bound (dashed yellow), Previous Targets (purple), Baseline (grey), Proposed Targets (blue)



December 14, 2021

41

Proposed targets for Indicator 3B1

| Program Year | Historical Data | Forecast W/ 2019-2020 | Forecast W/O 2019-2020 | Baseline | Previous Target | Proposed Targets |
|--------------|-----------------|-----------------------|------------------------|----------|-----------------|------------------|
| 2013-2014 | 71.22% | | | 71.22% | 71.22% | |
| 2014-2015 | 74.51% | | | 71.22% | 71.50% | |
| 2015-2016 | 74.73% | | | 71.22% | 72.00% | |
| 2016-2017 | 71.80% | | | 71.22% | 72.50% | |
| 2017-2018 | 74.26% | | | 71.22% | 73.00% | |
| 2018-2019 | 74.65% | | | 71.22% | 73.50% | |
| 2019-2020 | 78.10% | | 74.17% | 71.22% | 74.00% | |
| 2020-2021 | | 76.75% | 74.41% | 71.22% | | 74.50% |
| 2021-2022 | | 77.49% | 74.66% | 71.22% | | 75.00% |
| 2022-2023 | | 78.22% | 74.91% | 71.22% | | 75.50% |
| 2023-2024 | | 78.96% | 75.15% | 71.22% | | 76.00% |
| 2024-2025 | | 79.69% | 75.40% | 71.22% | | 76.50% |
| 2025-2026 | | 80.43% | 75.64% | 71.22% | | 77.00% |

Child outcome B:
Acquisition and use
of knowledge and
skills
(including early
language/
communication)

SS1: the percent of
children who made
improvements

$$\frac{c + d}{a + b + c + d}$$



41

December 14, 2021

42

Indicator 3B2: Knowledge and Skills

Summary Statement 2

| Program Year | Total Children Surveyed | Children with Knowledge at age expectation | Percent | Target | National Mean** |
|--------------|-------------------------|--|---------|--------|-----------------|
| 2013-2014 | 452 | 175 | 38.7% | 38.7% | 51% |
| 2014-2015 | 1,096 | 440 | 40.1% | 39.0% | 50% |
| 2015-2016 | 1,470 | 614 | 41.8% | 40.0% | 50% |
| 2016-2017 | 1,315 | 550 | 41.8% | 41.0% | 48% |
| 2017-2018 | 1,355 | 533 | 39.3% | 42.0% | 48% |
| 2018-2019 | 2,951 | 1,189 | 40.3% | 43.0% | 47% |
| 2019-2020 | 6,652 | 2,533 | 38.1% | 43.0% | N/A |
| 2020-2021* | 6,313 | 2,323 | 36.8% | TBD | N/A |

Child outcome B:
Acquisition and use
of knowledge and
skills
(including early
language/
communication)

SS2: the percent of
children exited at age
expectation among
all children in the
sample

$$\frac{d + e}{a + b + c + d + e}$$

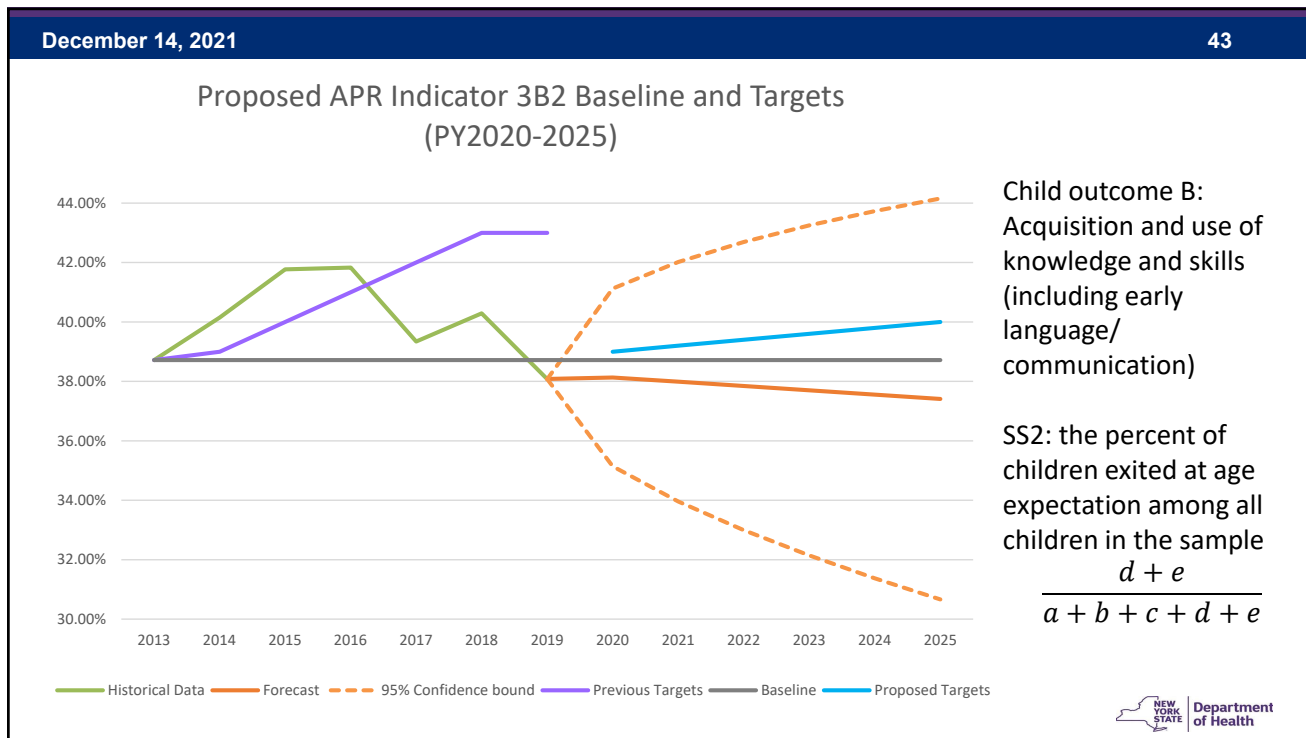
*Preliminary data.

N/A – Not Available. TBD – To Be Determined.

**<https://sites.ed.gov/idea/files/PartC-IndicatorAnalysis-FFY2018.pdf>



42



43

December 14, 2021 44

Proposed targets for Indicator 3B2

| Program Year | Historical Data | Forecast W/ 2019-2020 | Baseline | Previous Target | Proposed Targets |
|--------------|-----------------|-----------------------|----------|-----------------|------------------|
| 2013-2014 | 38.72% | | 38.72% | 38.72% | |
| 2014-2015 | 40.15% | | 38.72% | 39.00% | |
| 2015-2016 | 41.77% | | 38.72% | 40.00% | |
| 2016-2017 | 41.83% | | 38.72% | 41.00% | |
| 2017-2018 | 39.34% | | 38.72% | 42.00% | |
| 2018-2019 | 40.29% | | 38.72% | 43.00% | |
| 2019-2020 | 38.08% | | 38.72% | 43.00% | |
| 2020-2021 | | 38.13% | 38.72% | | 39.00% |
| 2021-2022 | | 37.99% | 38.72% | | 39.20% |
| 2022-2023 | | 37.84% | 38.72% | | 39.40% |
| 2023-2024 | | 37.70% | 38.72% | | 39.60% |
| 2024-2025 | | 37.55% | 38.72% | | 39.80% |
| 2025-2026 | | 37.41% | 38.72% | | 40.00% |

Child outcome B:
Acquisition and use of knowledge and skills (including early language/communication)

SS2: the percent of children exited at age expectation among all children in the sample

$$\frac{d + e}{a + b + c + d + e}$$


NEW YORK STATE Department of Health

44

| December 14, 2021 | | | | | | | 45 |
|-------------------------------------|-------------------------|-------------------|-------------------|-------------------|-------------------|-------------------|----|
| Indicator 3C: Appropriate Behaviors | | | | | | | |
| Program Year | Total Children Surveyed | % OSEP Category a | % OSEP Category b | % OSEP Category c | % OSEP Category d | % OSEP Category e | |
| 2013-2014 | 452 | 4.9% | 22.8% | 34.7% | 29.9% | 7.7% | |
| 2014-2015 | 1,096 | 3.4% | 22.1% | 33.9% | 30.0% | 10.6% | |
| 2015-2016 | 1,459 | 7.0% | 17.5% | 36.3% | 31.9% | 7.3% | |
| 2016-2017 | 1,317 | 7.7% | 17.1% | 39.0% | 30.9% | 5.3% | |
| 2017-2018 | 1,356 | 6.9% | 18.1% | 38.0% | 31.7% | 5.2% | |
| 2018-2019 | 2,951 | 8.4% | 15.1% | 38.2% | 32.1% | 6.2% | |
| 2019-2020 | 6,652 | 6.5% | 15.1% | 41.8% | 31.2% | 5.4% | |
| 2020-2021* | 6,252 | 7.4% | 15.1% | 42.9% | 29.8% | 4.7% | |

a. Infants and toddlers who did not improve functioning
 b. Infants and toddlers who improved functioning but not sufficient to move nearer to functioning comparable to same-aged peers
 c. Infants and toddlers who improved functioning to a level nearer to same-aged peers but did not reach it
 d. Infants and toddlers who improved functioning to reach a level comparable to same-aged peers
 e. Infants and toddlers who maintained functioning at a level comparable to same-aged peers


*Preliminary data.



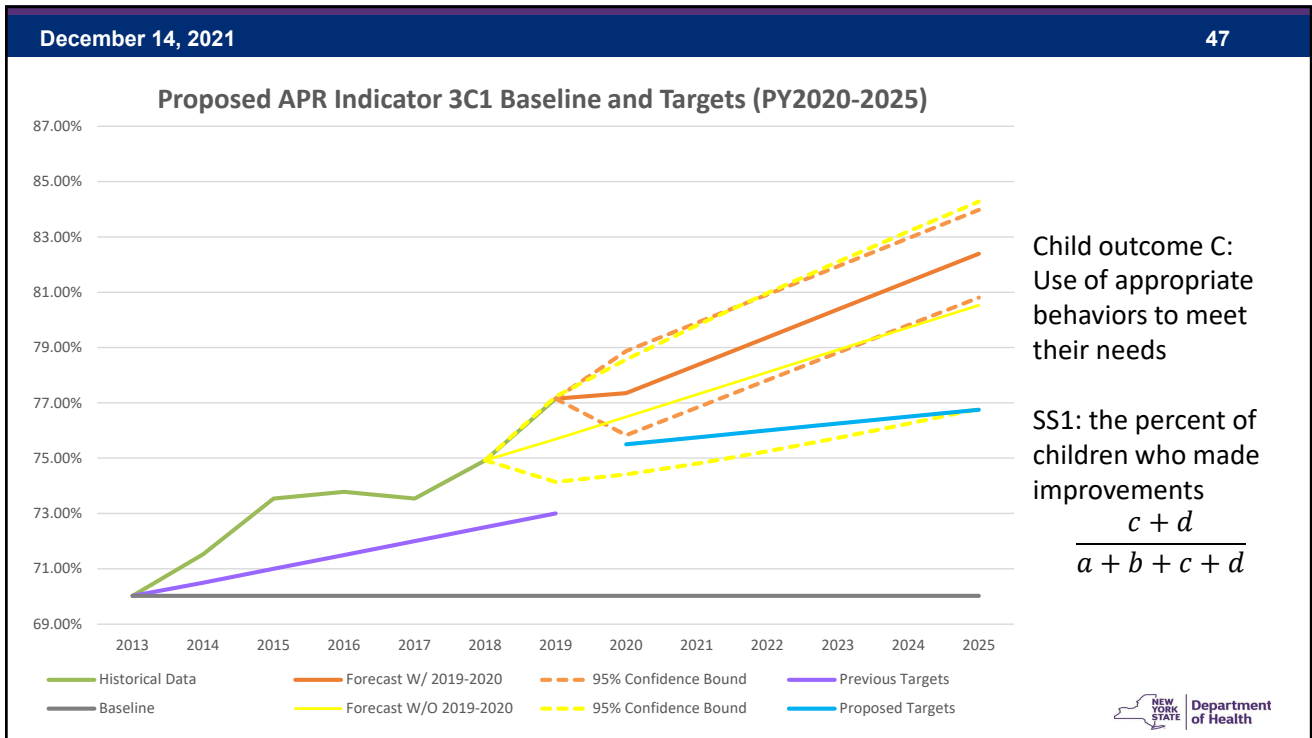
45

| December 14, 2021 | | | | | | 46 |
|--------------------------------------|--------------------------------------|---------------------------------|---------|--------|-----------------|---|
| Indicator 3C1: Appropriate Behaviors | | | | | | |
| Summary Statement 1 | | | | | | |
| Program Year | Total Children Below Age Expectation | Children with Improved Behavior | Percent | Target | National Mean** | |
| 2013-2014 | 417 | 292 | 70.0% | 70.0% | 72% | Child outcome C: Use of appropriate behaviors to meet their needs |
| 2014-2015 | 980 | 701 | 71.5% | 70.5% | 73% | |
| 2015-2016 | 1,353 | 995 | 73.5% | 71.0% | 72% | SS1: the percent of children who made improvements $\frac{c + d}{a + b + c + d}$ |
| 2016-2017 | 1,247 | 920 | 73.8% | 71.5% | 74% | |
| 2017-2018 | 1,285 | 945 | 73.5% | 72.0% | 74% | |
| 2018-2019 | 2,767 | 2,073 | 74.9% | 72.5% | 74% | |
| 2019-2020 | 6,292 | 4,854 | 77.1% | 73.0% | N/A | |
| 2020-2021* | 6,014 | 4,595 | 76.4% | TBD | N/A | |

*Preliminary data.
 N/A – Not Available. TBD – To Be Determined.
 **<https://sites.ed.gov/idea/files/PartC-IndicatorAnalysis-FFY2018.pdf>



46



47

December 14, 2021 48

Proposed targets for Indicator 3C1

| Program Year | Historical Data | Forecast W/ 2019-2020 | Forecast W/O 2019-2020 | Baseline | Previous Target | Proposed Targets |
|--------------|-----------------|-----------------------|------------------------|----------|-----------------|------------------|
| 2013-2014 | 70.02% | | | 70.02% | 70.02% | |
| 2014-2015 | 71.53% | | | 70.02% | 70.50% | |
| 2015-2016 | 73.54% | | | 70.02% | 71.00% | |
| 2016-2017 | 73.78% | | | 70.02% | 71.50% | |
| 2017-2018 | 73.54% | | | 70.02% | 72.00% | |
| 2018-2019 | 74.92% | | | 70.02% | 72.50% | |
| 2019-2020 | 77.15% | | 75.68% | 70.02% | 73.00% | |
| 2020-2021 | | 77.35% | 76.49% | 70.02% | | 75.50% |
| 2021-2022 | | 78.36% | 77.30% | 70.02% | | 75.75% |
| 2022-2023 | | 79.37% | 78.11% | 70.02% | | 76.00% |
| 2023-2024 | | 80.38% | 78.91% | 70.02% | | 76.25% |
| 2024-2025 | | 81.38% | 79.72% | 70.02% | | 76.50% |
| 2025-2026 | | 82.39% | 80.53% | 70.02% | | 76.75% |

Child outcome C:
Use of appropriate behaviors to meet their needs

SS1: the percent of children who made improvements

$$\frac{c + d}{a + b + c + d}$$

NEW YORK STATE Department of Health

48

Indicator 3C2: Appropriate Behaviors

Summary Statement 2

| Program Year | Total Children Surveyed | Children with Behavior at age expectation | Percent | Target | National Mean** |
|--------------|-------------------------|---|---------|--------|-----------------|
| 2013-2014 | 452 | 170 | 37.6% | 37.6% | 58% |
| 2014-2015 | 1,096 | 445 | 40.6% | 38.0% | 59% |
| 2015-2016 | 1,459 | 572 | 39.2% | 39.0% | 59% |
| 2016-2017 | 1,317 | 477 | 36.2% | 40.0% | 58% |
| 2017-2018 | 1,356 | 501 | 36.9% | 41.0% | 58% |
| 2018-2019 | 2,951 | 1,130 | 38.3% | 42.0% | 58% |
| 2019-2020 | 6,652 | 2,435 | 36.6% | 42.0% | N/A |
| 2020-2021* | 6,313 | 2,184 | 34.6% | TBD | N/A |

Child outcome C:
Use of appropriate behaviors to meet their needs

SS2: the percent of children exited at age expectation among all children in the sample

$$\frac{d + e}{a + b + c + d + e}$$

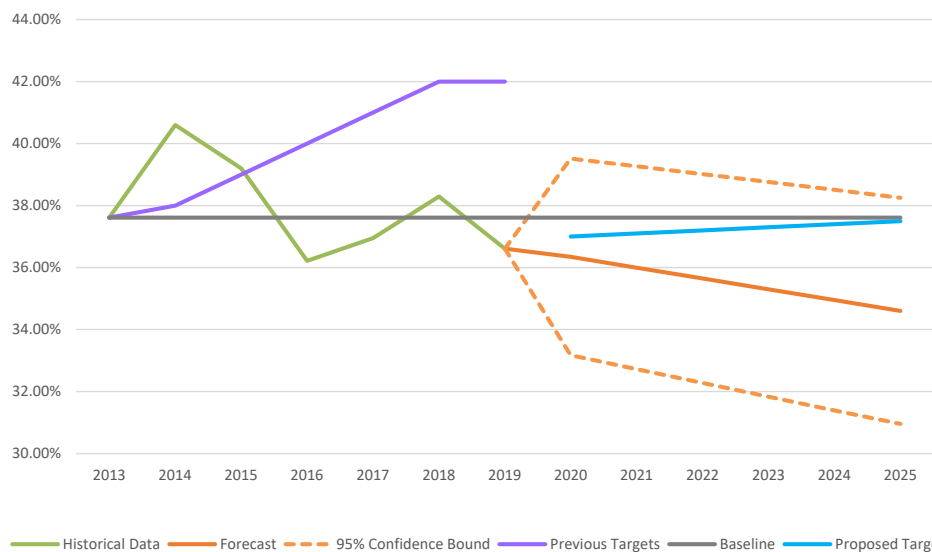
*Preliminary data.

N/A – Not Available. TBD – To Be Determined.

**<https://sites.ed.gov/idea/files/PartC-IndicatorAnalysis-FFY2018.pdf>



Proposed APR Indicator 3C2 Baseline and Targets (PY2020-2025)



Child outcome C:
Use of appropriate behaviors to meet their needs

SS2: the percent of children exited at age expectation among all children in the sample

$$\frac{d + e}{a + b + c + d + e}$$

Historical Data Forecast 95% Confidence Bound Previous Targets Baseline Proposed Targets



Proposed targets for Indicator 3C2

| Program Year | Historical Data | Forecast W/ 2019-2020 | Baseline | Previous Target | Proposed Targets |
|--------------|-----------------|-----------------------|----------|-----------------|------------------|
| 2013-2014 | 37.61% | | 37.61% | 37.61% | |
| 2014-2015 | 40.60% | | 37.61% | 38.00% | |
| 2015-2016 | 39.20% | | 37.61% | 39.00% | |
| 2016-2017 | 36.22% | | 37.61% | 40.00% | |
| 2017-2018 | 36.95% | | 37.61% | 41.00% | |
| 2018-2019 | 38.29% | | 37.61% | 42.00% | |
| 2019-2020 | 36.61% | 36.61% | 37.61% | 42.00% | |
| 2020-2021 | | 36.34% | 37.61% | | 37.00% |
| 2021-2022 | | 36.00% | 37.61% | | 37.15% |
| 2022-2023 | | 35.65% | 37.61% | | 37.30% |
| 2023-2024 | | 35.30% | 37.61% | | 37.45% |
| 2024-2025 | | 34.95% | 37.61% | | 37.60% |
| 2025-2026 | | 34.60% | 37.61% | | 37.75% |

Child outcome C:
Use of appropriate behaviors to meet their needs

SS2: the percent of children exited at age expectation among all children in the sample

$$\frac{d + e}{a + b + c + d + e}$$



Family Outcomes



Indicator 4: Family Outcomes OSEP Definitions

- 4A: Percent of families participating in Part C who report that early intervention services have helped the family know their rights
- 4B: Percent of families participating in Part C who report that early intervention services have helped the family effectively communicate their children's needs
- 4C: Percent of families participating in Part C who report that early intervention services have helped the family help their children develop and learn



Family Outcomes Survey

- Family outcomes are collected using a survey sent to families as they are exiting the Early Intervention Program (EIP)
- A National TA Center* developed the survey – adapted by NYS
- NYS has collected family outcomes since 2008
- Children received at least six months of services
- Reporting period: July 1, 2020 – June 30, 2021

*National Center for Special Education Accountability and Monitoring (NCSEAM)

https://www.health.ny.gov/community/infants_children/early_intervention/outcomes_survey/family/docs/survey.pdf



Changes in PY 2019-2020 and PY 2020-2021 to Improve Number of Returned Family Outcome Surveys

1. 36 survey items => 24 survey items
2. 11th grade reading level => 8th grade reading level
3. Paper survey upon request in addition to online => paper survey with returning postage readily available in addition to online
4. Four batches of surveys sent upon families exiting the EIP

| Program Year | # Surveys Sent | # Surveys Delivered | # Surveys Returned | | | % Return Rate |
|--------------|----------------|---------------------|--------------------|-------|----------------|---------------|
| | | | Online | Paper | Total Returned | |
| PY2018-2019 | 19,215 | 17,689 | 1,579 | 45 | 1,624 | 9.2% |
| PY2019-2020 | 20,771 | 19,173 | 1,305 | 1,725 | 3,030 | 15.8% |
| PY2020-2021* | 17,700 | 17,006 | 844 | 935 | 1,779 | 10.5% |

*Preliminary data.

https://www.health.ny.gov/community/infants_children/early_intervention/outcomes_survey/family/docs/survey.pdf
https://www.health.ny.gov/community/infants_children/early_intervention/outcomes_survey/family/



New York State Early Intervention Family Outcome Survey 22 IFS Items from NCSEAM + 2 Telehealth Survey Items

| Early Intervention services helped me and/or my family: | Positive %* |
|--|-------------|
| 1. Understand how the Early Intervention system works. | 98% |
| 2. Understand the roles of the people who work with my child and family. | 98% |
| 15. Do things with and for my child that are good for my child's development. | 97% |
| 4. Be able to evaluate how much progress my child is making. | 96% |
| 12. Feel that my efforts are helping my child. | 96% |
| 3. Communicate more effectively with the people who work with my child and family. | 95% |
| 6. Get the services that my child and family need. | 95% |
| 10. Understand my child's special needs. | 95% |
| 5. Know about my child's and family's rights concerning Early Intervention services. | 95% |
| 7. Feel that I can get the services and supports that my child and family need. | 94% |
| 17. Improve my family's quality of life. | 94% |
| 14. Make changes in family routines that will benefit my child with special needs. | 94% |
| 16. Do activities that are good for my child even in times of stress. | 93% |
| 19. Feel that my child will be accepted and welcomed in the community. | 93% |
| 11. Feel more confident in my skills as a parent. | 93% |
| 20. Feel that my family will be accepted and welcomed in the community. | 92% |
| 13. Be more effective in managing my child's behavior. | 92% |
| 8. Know where to go for support to meet my child's needs. | 92% |
| 9. Know where to go for support to meet my family's needs. | 91% |
| 18. Keep up friendships for my child and family. | 88% |
| 21. Know about services in the community. | 85% |
| 22. Participate in typical activities for children and families in my community. | 83% |

Telehealth survey items:

23. Think back on your child and family's time in the Early Intervention Program. If your child received Telehealth services, they worked well. Telehealth services mean your child received services through a computer, tablet, or smartphone.

Positive %* = 69%

24. Think back on your child and family's time in the Early Intervention Program. Telehealth services may not have been available to your child and family. If they were available, would you have used them? Telehealth services mean your child received services through a computer, tablet, or smartphone.

Yes %* = 61%

No %* = 26%

Maybe %* = 13%

IFS – Impact of Early Intervention Services on Your Family Scale
 NCSEAM – National Center for Special Education Accountability Monitoring
 Positive % = Very Strongly Agree % + Strongly Agree % + Agree %
 *Preliminary data.



Equity in Family Outcomes

Strategies to Improve Representativeness

- Identifying additional survey methodology changes to support increasing survey return response rates and representativeness of family outcomes data
- Identifying and strengthening relationships with community partners and targeted community groups, to enhance family engagement from all families
- Developing outreach materials that promote family engagement and feedback



December 14, 2021

59

Equity of Family Outcomes

Reported Representativeness in APR:

- Race
- Ethnicity
- Age at referral
- Sex

Proposed to be added to APR:

- Region
- Language



59

December 14, 2021

60

Equity of Family Outcomes Reported Representativeness in APR – Race

| Family Outcome Survey by Race | | PY2019-2020 | | | | PY2020-2021* | | | |
|---|---------------------|-------------|-------|-------|--------|--------------|-------|-------|--------|
| | | White | Black | Other | Total | White | Black | Other | Total |
| All families (population) vs. families returned survey (returned) | Population | 10,574 | 1,996 | 8,201 | 20,771 | 9,454 | 1,774 | 6,472 | 17,700 |
| | Expected to return | 1,543 | 291 | 1,196 | 3,030 | 950 | 178 | 651 | 1,779 |
| | Returned | 1,753 | 208 | 1,069 | 3,030 | 1,082 | 119 | 578 | 1,779 |
| | Returned %** | 17% | 10% | 13% | 15% | 11% | 7% | 9% | 10% |
| 4A Know Their Rights | Positive response % | 95% | 94% | 95% | 95% | 94% | 93% | 95% | 95% |
| 4B Effective Communication | Positive response % | 96% | 95% | 96% | 96% | 95% | 93% | 96% | 95% |
| 4C Help Develop and Learn | Positive response % | 95% | 97% | 95% | 95% | 94% | 92% | 94% | 94% |

*Preliminary data.

**The highlighted difference was statistically significant with $p < .05$.



60

December 14, 2021

61

Equity of Family Outcomes Reported Representativeness in APR – Ethnicity

| Family Outcome Survey by Ethnicity | | PY2019-2020 | | | PY2020-2021* | | |
|---|---------------------|-------------|--------------|--------|--------------|--------------|--------|
| | | Hispanic | Non-Hispanic | Total | Hispanic | Non-Hispanic | Total |
| All families (population) vs. families returned survey (returned) | Population | 5,836 | 14,935 | 20,771 | 4,593 | 13,107 | 17,700 |
| | Expected to return | 851 | 2,179 | 3,030 | 462 | 1,317 | 1,779 |
| | Returned | 699 | 2,331 | 3,030 | 378 | 1,401 | 1,779 |
| | Returned %** | 12% | 16% | 15% | 8.23% | 10.69% | 10.05% |
| 4A Know Their Rights | Positive response % | 94% | 95% | 95% | 94% | 95% | 95% |
| 4B Effective Communication | Positive response % | 96% | 96% | 96% | 96% | 95% | 95% |
| 4C Help Develop and Learn | Positive response % | 96% | 95% | 95% | 94% | 94% | 94% |

*Preliminary data.

**The highlighted difference was statistically significant with $p < .05$.



61

December 14, 2021

62

Equity of Family Outcomes Reported Representativeness in APR – Sex

| Family Outcome Survey by Sex | | PY2019-2020 | | | PY2020-2021* | | |
|---|---------------------|-------------|--------|-------|--------------|--------|-------|
| | | Male | Female | Total | Male | Female | Total |
| All families (population) vs. families returned survey (returned) | Population | 14119 | 6652 | 20771 | 11834 | 5866 | 17700 |
| | Expected to return | 2060 | 970 | 3030 | 1189 | 590 | 1779 |
| | Returned | 2092 | 938 | 3030 | 1234 | 545 | 1779 |
| | Returned %** | 15% | 14% | 15% | 10% | 9% | 10% |
| 4A Know Their Rights | Positive response % | 95% | 95% | 95% | 95% | 94% | 95% |
| 4B Effective Communication | Positive response % | 96% | 97% | 96% | 95% | 96% | 95% |
| 4C Help Develop and Learn | Positive response % | 95% | 95% | 95% | 94% | 94% | 94% |

*Preliminary data.

**The highlighted difference was statistically significant with $p < .05$.



62

December 14, 2021

63

Equity of Family Outcomes Reported Representativeness in APR – Age at Referral

| Age at referral in months | PY2019-2020 | | PY2020-2021* | |
|-------------------------------------|-------------|---------|--------------|---------|
| | N | Mean | N | Mean |
| Families not returned survey | 17741 | 19.305 | 15,921 | 18.1226 |
| Families returned survey | 3030 | 19.2483 | 1,779 | 18.3569 |
| 4A - Know Their Rights | | | | |
| Families with positive response | 2837 | 19.3223 | 1,657 | 18.3927 |
| Families with negative response | 155 | 18.7327 | 96 | 17.4885 |
| 4B - Effective Communication | | | | |
| Families with positive response | 2851 | 19.2709 | 1,659 | 18.3645 |
| Families with negative response | 118 | 19.4966 | 80 | 17.9129 |
| 4C - Help Develop and Learn | | | | |
| Families with positive response | 2790 | 19.285 | 1,610 | 18.3359 |
| Families with negative response | 147 | 19.7612 | 102 | 18.8193 |

*Preliminary data.



63

December 14, 2021

64

Equity of Family Outcomes Proposed to Be Added in APR – Region

| Family Outcome Survey by Region | | PY2019-2020 | | | PY2020-2021* | | |
|---|-----------------------|-------------|-------|-------|--------------|------|-------|
| | | NYC | ROS | Total | NYC | ROS | Total |
| All families (population) vs. families returned survey (returned) | Population | 9607 | 11164 | 20771 | 8383 | 9317 | 17700 |
| | Expected to return | 1401 | 1629 | 3030 | 843 | 936 | 1779 |
| | Returned | 1146 | 1884 | 3030 | 601 | 1178 | 1779 |
| | Returned %** | 12% | 17% | 15% | 7% | 13% | 10% |
| 4A Know Their Rights | Positive response % | 94% | 95% | 95% | 94% | 95% | 95% |
| 4B Effective Communication | Positive response %** | 95% | 97% | 96% | 94% | 96% | 95% |
| 4C Help Develop and Learn | Positive response % | 94% | 96% | 95% | 93% | 95% | 94% |

*Preliminary data.

**The highlighted difference was statistically significant with $p < .05$.

NYC – New York City. ROS – Rest Of State.



64

December 14, 2021

65

Equity of Family Outcomes Proposed to Be Added in APR – Language

| Family Outcome Survey by Language*** | | PY2019-2020 | | | | PY2020-2021* | | | |
|---|-----------------------|-------------|---------|-------|-------|--------------|---------|-------|-------|
| | | English | Spanish | Other | Total | English | Spanish | Other | Total |
| All families (population) vs. families returned survey (returned) | Population | 15707 | 2691 | 2373 | 20771 | 13622 | 2024 | 2054 | 17700 |
| | Expected to return | 2291 | 393 | 346 | 3030 | 1369 | 203 | 207 | 1779 |
| | Returned | 2419 | 325 | 286 | 3030 | 1487 | 152 | 140 | 1779 |
| | Returned %** | 15% | 12% | 12% | 15% | 11% | 8% | 7% | 10% |
| 4A Know Their Rights | Positive response %** | 95% | 93% | 98% | 95% | 94% | 93% | 97% | 95% |
| 4B Effective Communication | Positive response % | 96% | 99% | 96% | 96% | 95% | 95% | 98% | 95% |
| 4C Help Develop and Learn | Positive response % | 95% | 96% | 96% | 95% | 94% | 93% | 96% | 94% |

*Preliminary data.

**The highlighted difference was statistically significant with $p < .05$.

***The language is based on the child's record in New York Early Intervention System (NYEIS), not the language of the survey returned.



65

December 14, 2021

66

Indicator 4A: Know Their Rights

| Program Year | Denominator | Numerator | Percent | Target | National Mean*** | OSEP Family Outcome 4A: Percent of families participating in Part C who report that early intervention services have helped the family know their rights |
|--------------|-------------|-----------|---------|--------|------------------|--|
| 2013-2014 | 1,345 | 1,022 | 75.99% | 75.0% | 88% | |
| 2014-2015 | 405 | 281 | 69.38% | 76.0% | 90% | |
| 2015-2016 | 1,091 | 799 | 73.24% | 77.0% | 89% | |
| 2016-2017 | 1,456 | 1,142 | 78.43% | 78.0% | 90% | |
| 2017-2018 | 1,848 | 1,400 | 75.80% | 79.0% | 90% | |
| 2018-2019* | 1,584 | 1,462 | 92.30% | 93.0% | 91% | |
| 2019-2020 | 2,992 | 2,837 | 94.82% | 93.0% | N/A | |
| 2020-2021** | 1,753 | 1,657 | 94.52% | TBD | N/A | |

*Starting PY2018-2019, reporting methodology changed from Rasch model to the positive response from families.

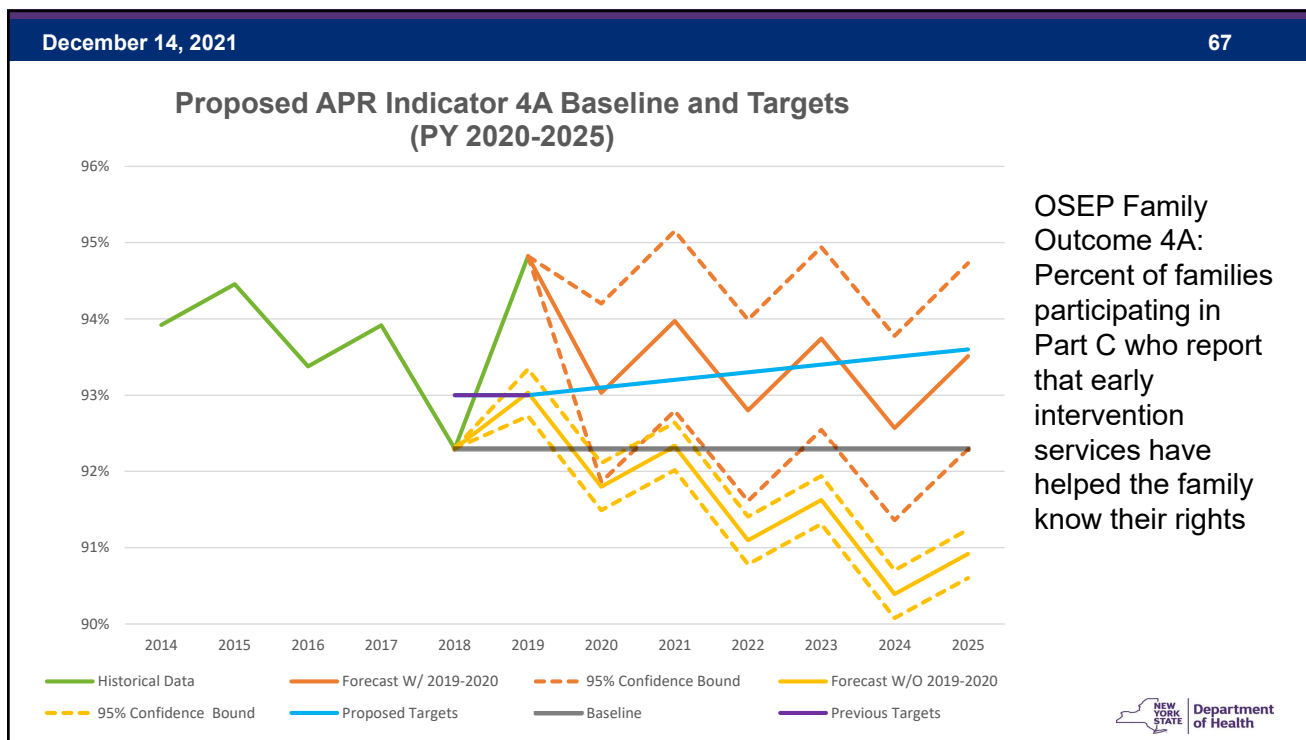
**Preliminary data.

N/A – Not Available. TBD – To Be Determined.

***<https://sites.ed.gov/idea/files/PartC-IndicatorAnalysis-FFY2018.pdf>



66



67

December 14, 2021 68

Proposed targets for Indicator 4A

| Program Year | Historical Data | Forecast W/ 2019-2020 | Forecast W/O 2019-2020 | Baseline | Previous Targets | Proposed Targets |
|--------------|-----------------|-----------------------|------------------------|----------|------------------|------------------|
| 2014-2015 | 93.92% | | | | | |
| 2015-2016 | 94.46% | | | | | |
| 2016-2017 | 93.38% | | | | | |
| 2017-2018 | 93.92% | | | | | |
| 2018-2019 | 92.30% | | | 92.30% | 93.00% | |
| 2019-2020 | 94.82% | | 93.03% | 92.30% | 93.00% | |
| 2020-2021 | | 93.03% | 91.80% | 92.30% | | 93.10% |
| 2021-2022 | | 93.97% | 92.33% | 92.30% | | 93.20% |
| 2022-2023 | | 92.80% | 91.10% | 92.30% | | 93.30% |
| 2023-2024 | | 93.74% | 91.63% | 92.30% | | 93.40% |
| 2024-2025 | | 92.57% | 90.39% | 92.30% | | 93.50% |
| 2025-2026 | | 93.51% | 90.92% | 92.30% | | 93.60% |

OSEP Family Outcome 4A: Percent of families participating in Part C who report that early intervention services have helped the family know their rights

Department of Health

68

Indicator 4B: Effective Communication

| Program Year | Denominator | Numerator | Percent | Target | National Mean*** |
|--------------|-------------|-----------|---------|--------|------------------|
| 2013-2014 | 1,345 | 968 | 71.97% | 71.0% | 89% |
| 2014-2015 | 405 | 273 | 67.41% | 72.0% | 90% |
| 2015-2016 | 1,091 | 742 | 68.01% | 73.0% | 90% |
| 2016-2017 | 1,456 | 1,080 | 74.18% | 74.0% | 91% |
| 2017-2018 | 1,848 | 1,323 | 71.59% | 75.0% | 91% |
| 2018-2019* | 1,559 | 1,414 | 90.70% | 91.0% | 91% |
| 2019-2020 | 2,969 | 2,851 | 96.03% | 91.0% | N/A |
| 2020-2021** | 1,739 | 1,659 | 95.39% | TBD | N/A |

OSEP Family Outcome 4B: Percent of families participating in Part C who report that early intervention services have helped the family effectively communicate their children's needs

*Starting PY2018-2019, reporting methodology changed from Rasch model to the positive response from families.

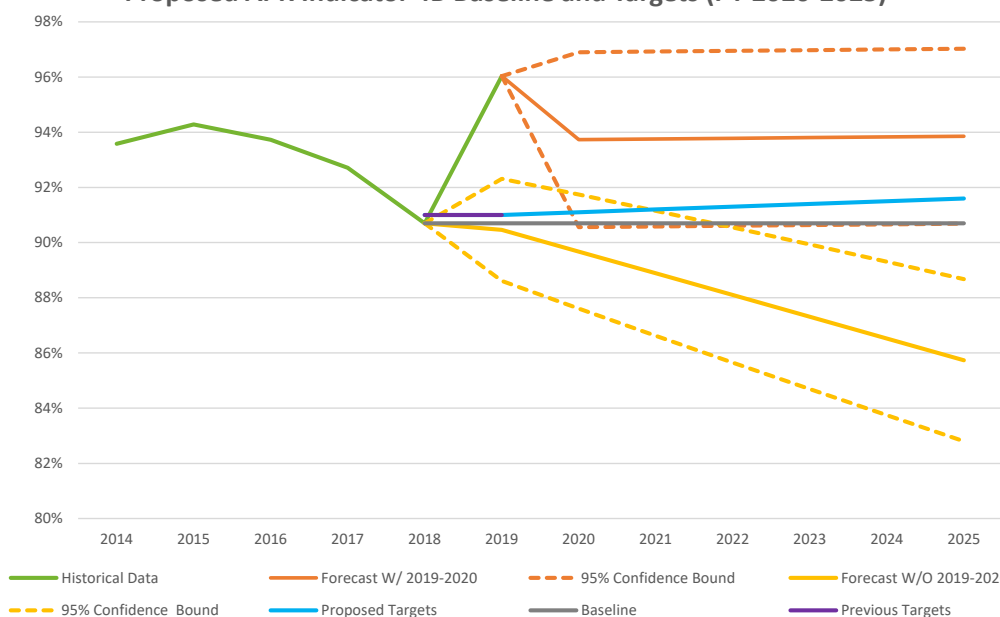
**Preliminary data.

N/A – Not Available. TBD – To Be Determined.

***<https://sites.ed.gov/idea/files/PartC-IndicatorAnalysis-FFY2018.pdf>



Proposed APR Indicator 4B Baseline and Targets (PY 2020-2025)



OSEP Family Outcome 4B: Percent of families participating in Part C who report that early intervention services have helped the family effectively communicate their children's needs



December 14, 2021

71

Proposed targets for Indicator 4B

| Program Year | Historical Data | Forecast W/ 2019-2020 | Forecast W/O 2019-2020 | Baseline | Previous Targets | Proposed Targets |
|--------------|-----------------|--------------------------|---------------------------|----------|---------------------|---------------------|
| 2014-2015 | 93.58% | | | | | |
| 2015-2016 | 94.28% | | | | | |
| 2016-2017 | 93.73% | | | | | |
| 2017-2018 | 92.71% | | | | | |
| 2018-2019 | 90.70% | | | 90.70% | 91.00% | |
| 2019-2020 | 96.03% | | 90.46% | 90.70% | 91.00% | |
| 2020-2021 | | 93.73% | 89.67% | 90.70% | | 91.10% |
| 2021-2022 | | 93.75% | 88.89% | 90.70% | | 91.20% |
| 2022-2023 | | 93.78% | 88.10% | 90.70% | | 91.30% |
| 2023-2024 | | 93.80% | 87.31% | 90.70% | | 91.40% |
| 2024-2025 | | 93.83% | 86.53% | 90.70% | | 91.50% |
| 2025-2026 | | 93.85% | 85.74% | 90.70% | | 91.60% |

4B: Percent of families participating in Part C who report that early intervention services have helped the family effectively communicate their children's needs



71

December 14, 2021

72

Indicator 4C: Help Develop and Learn

| Program Year | Denominator | Numerator | Percent | Target | National Mean*** |
|--------------|-------------|-----------|---------|--------|---------------------|
| 2013-2014 | 1,345 | 1,132 | 84.16% | 83.0% | 91% |
| 2014-2015 | 405 | 324 | 80.00% | 84.5% | 92% |
| 2015-2016 | 1,091 | 888 | 81.39% | 85.0% | 92% |
| 2016-2017 | 1,456 | 1,256 | 86.26% | 86.0% | 92% |
| 2017-2018 | 1,848 | 1,568 | 84.85% | 87.0% | 92% |
| 2018-2019* | 1,604 | 1,486 | 92.60% | 93.0% | 93% |
| 2019-2020 | 2,937 | 2,790 | 94.99% | 93.0% | N/A |
| 2020-2021** | 1,712 | 1,610 | 94.04% | TBD | N/A |

OSEP Family Outcome 4C: Percent of families participating in Part C who report that early intervention services have helped the family help their children develop and learn

*Starting PY2018-2019, reporting methodology changed from Rasch model to the positive response from families.

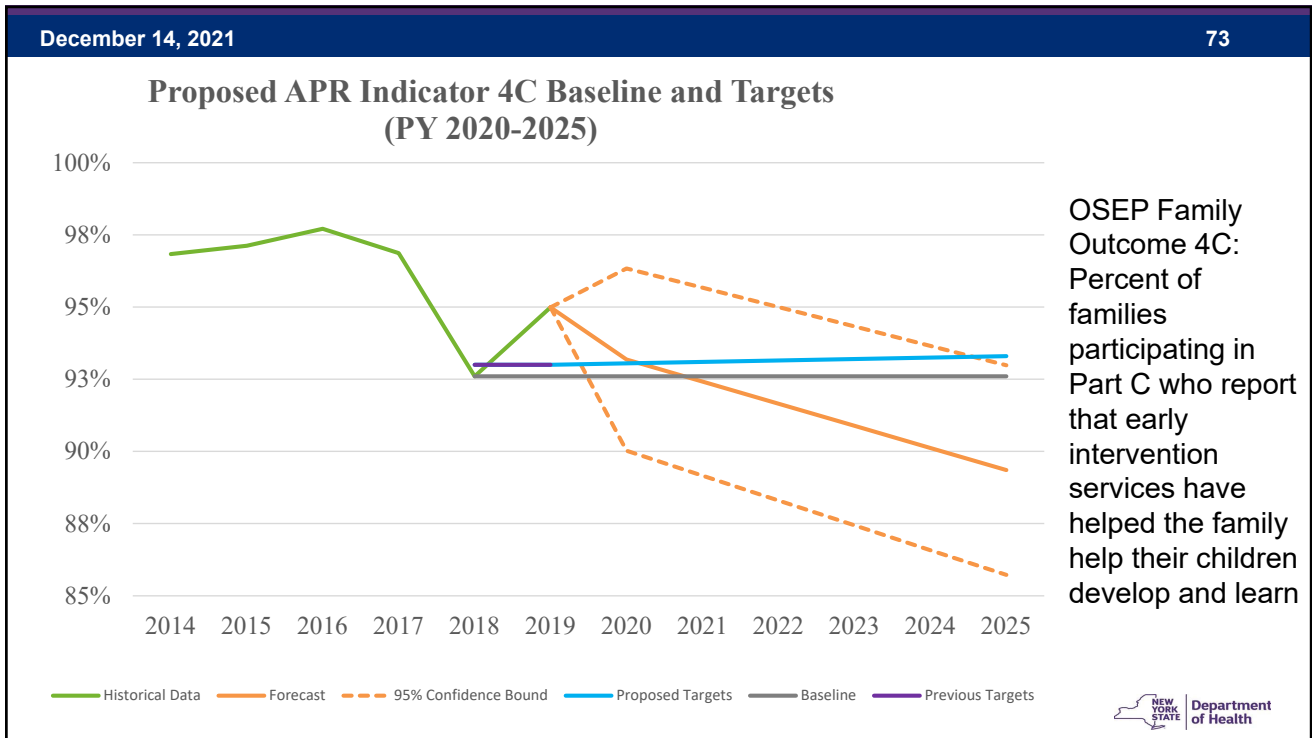
**Preliminary data.

N/A – Not Available. TBD – To Be Determined.

***<https://sites.ed.gov/idea/files/PartC-IndicatorAnalysis-FFY2018.pdf>



72



73

December 14, 2021 74

Proposed targets for Indicator 4C

| Program Year | Historical Data | Forecast | Baseline | Previous Targets | Proposed Targets |
|--------------|-----------------|----------|----------|------------------|------------------|
| 2014-2015 | 96.83% | | | | |
| 2015-2016 | 97.13% | | | | |
| 2016-2017 | 97.71% | | | | |
| 2017-2018 | 96.87% | | | | |
| 2018-2019 | 92.60% | | 92.60% | 93% | |
| 2019-2020 | 94.99% | | 92.60% | 93% | |
| 2020-2021 | | 93.18% | 92.60% | | 93.05% |
| 2021-2022 | | 92.41% | 92.60% | | 93.10% |
| 2022-2023 | | 91.65% | 92.60% | | 93.15% |
| 2023-2024 | | 90.88% | 92.60% | | 93.20% |
| 2024-2025 | | 90.12% | 92.60% | | 93.25% |
| 2025-2026 | | 89.35% | 92.60% | | 93.30% |

OSEP Family Outcome 4C: Percent of families participating in Part C who report that early intervention services have helped the family help their children develop and learn

Department of Health

74

December 14, 2021 75

Indicator 5: Infants less than 1

OSEP Definition:
Percent of infants and toddlers birth to 1 with IFSPs compared to Census data provided by OSEP

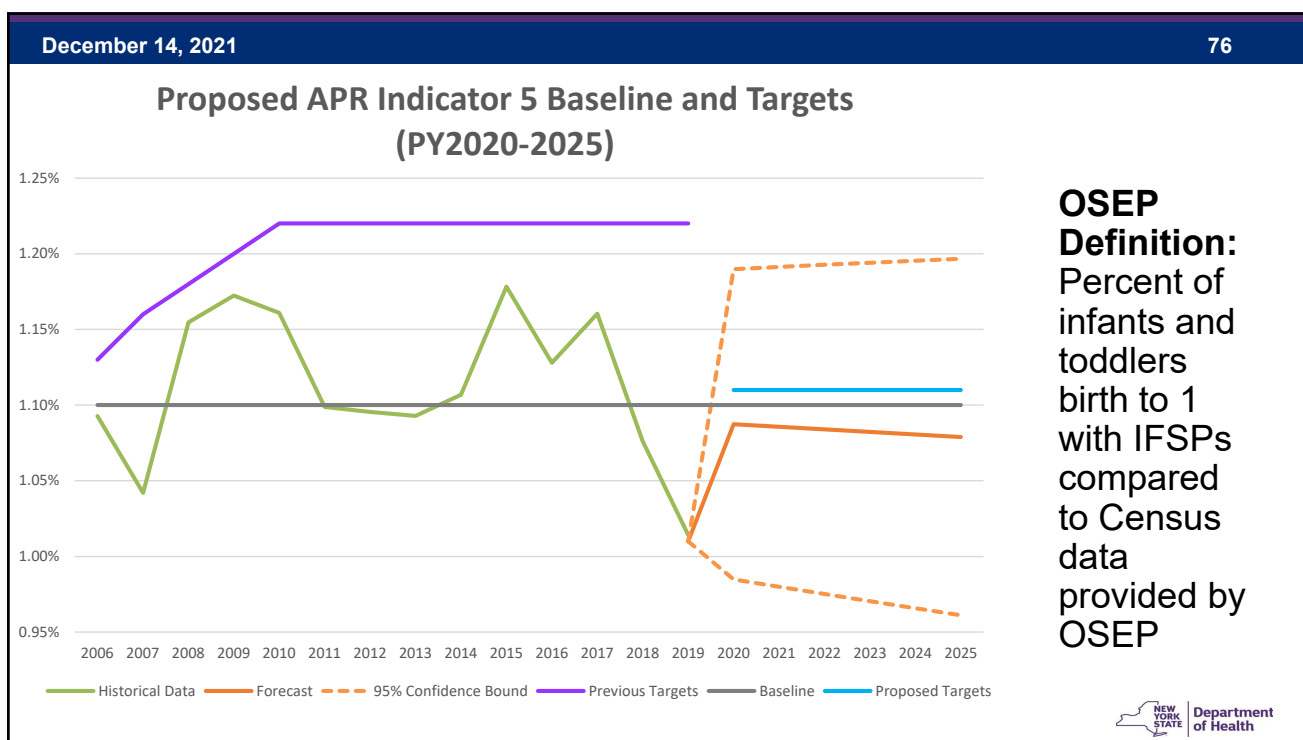
| Program Year | Total Infants (Census from OSEP) | Total Infants with IFSP (NY snapshot on Oct. 1 st) | Percent | Target | National Mean* |
|--------------|----------------------------------|--|---------|--------|----------------|
| 2013-2014 | 239,298 | 2,615 | 1.09% | 1.22% | 1.3% |
| 2014-2015 | 239,804 | 2,654 | 1.11% | 1.22% | 1.3% |
| 2015-2016 | 238,315 | 2,808 | 1.18% | 1.22% | 1.4% |
| 2016-2017 | 233,692 | 2,636 | 1.13% | 1.22% | 1.4% |
| 2017-2018 | 234,658 | 2,723 | 1.16% | 1.22% | 1.4% |
| 2018-2019 | 227,883 | 2,452 | 1.08% | 1.22% | 1.4% |
| 2019-2020 | 223,930 | 2,271 | 1.01% | 1.22% | N/A |
| 2020-2021 | 220,972 | 1,494 | 0.68% | TBD | N/A |

N/A – Not Available. TBD – To Be Determined.

*<https://sites.ed.gov/idea/files/PartC-IndicatorAnalysis-FFY2018.pdf>



75



76

December 14, 2021

77

Proposed targets for Indicator 5

| Program Year | Historical Data | Forecast | Baseline | Previous Targets | Proposed Targets |
|--------------|-----------------|----------|----------|------------------|------------------|
| 2006-2007 | 1.09% | | 1.10% | 1.13% | |
| 2007-2008 | 1.04% | | 1.10% | 1.16% | |
| 2008-2009 | 1.15% | | 1.10% | 1.18% | |
| 2009-2010 | 1.17% | | 1.10% | 1.20% | |
| 2010-2011 | 1.16% | | 1.10% | 1.22% | |
| 2011-2012 | 1.10% | | 1.10% | 1.22% | |
| 2012-2013 | 1.10% | | 1.10% | 1.22% | |
| 2013-2014 | 1.09% | | 1.10% | 1.22% | |
| 2014-2015 | 1.11% | | 1.10% | 1.22% | |
| 2015-2016 | 1.18% | | 1.10% | 1.22% | |
| 2016-2017 | 1.13% | | 1.10% | 1.22% | |
| 2017-2018 | 1.16% | | 1.10% | 1.22% | |
| 2018-2019 | 1.08% | | 1.10% | 1.22% | |
| 2019-2020 | 1.01% | 1.01% | 1.10% | 1.22% | |
| 2020-2021 | | 1.09% | 1.10% | | 1.11% |
| 2021-2022 | | 1.09% | 1.10% | | 1.11% |
| 2022-2023 | | 1.08% | 1.10% | | 1.11% |
| 2023-2024 | | 1.08% | 1.10% | | 1.11% |
| 2024-2025 | | 1.08% | 1.10% | | 1.11% |
| 2025-2026 | | 1.08% | 1.10% | | 1.11% |

OSEP Definition:
Percent of infants and toddlers birth to 1 with IFSPs compared to Census data provided by OSEP



77

December 14, 2021

78

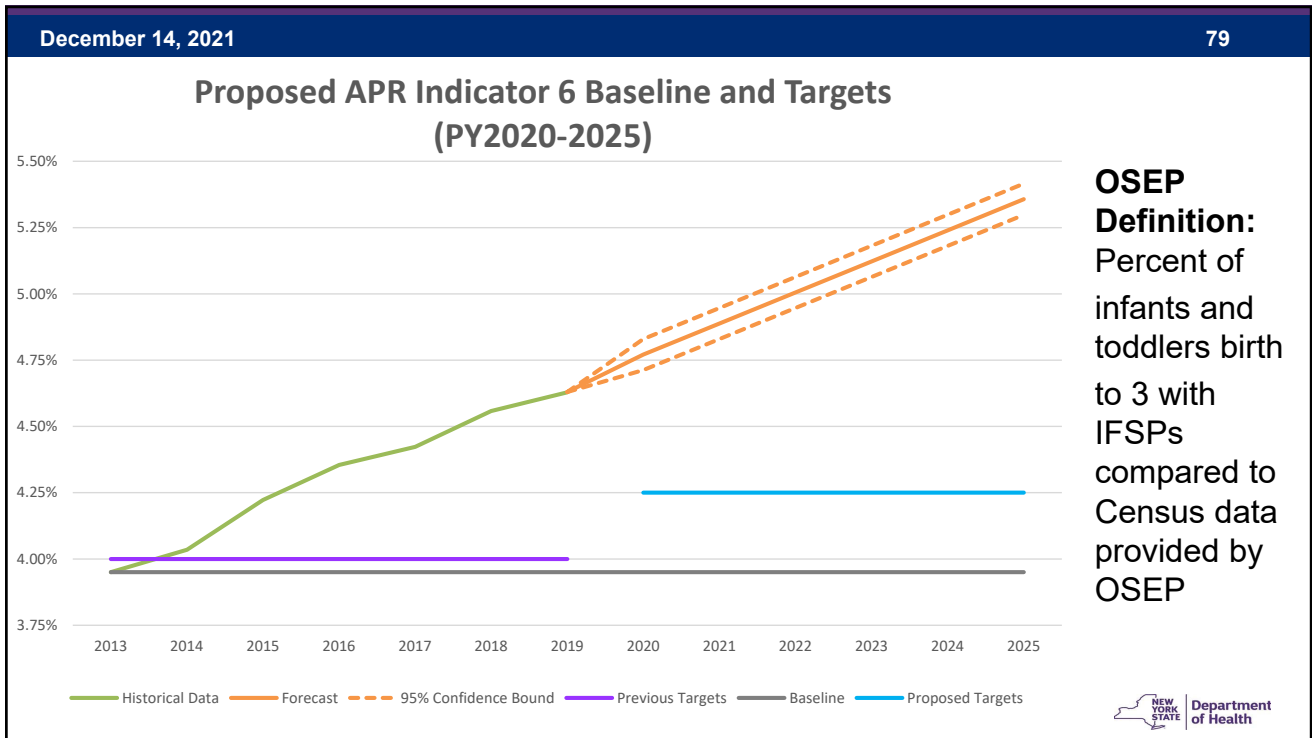
Indicator 6: Infants/Toddlers less than 3

| OSEP Definition: Percent of infants and toddlers birth to 3 with IFSPs compared to Census data provided by OSEP | Program Year | Total Infants (Census from OSEP) | Total Infants with IFSP (NY snapshot on Oct. 1 st) | Percent | Target | National Mean* |
|---|--------------|----------------------------------|--|---------|--------|----------------|
| | 2013-2014 | 716,997 | 28,325 | 3.95% | 3.95% | 3.0% |
| | 2014-2015 | 715,058 | 28,852 | 4.03% | 4.00% | 3.1% |
| | 2015-2016 | 711,133 | 30,025 | 4.22% | 4.00% | 3.1% |
| | 2016-2017 | 696,276 | 30,317 | 4.35% | 4.00% | 3.2% |
| | 2017-2018 | 703,115 | 31,097 | 4.42% | 4.00% | 3.3% |
| | 2018-2019 | 684,604 | 31,202 | 4.56% | 4.00% | 3.6% |
| | 2019-2020 | 673,026 | 31,152 | 4.63% | 4.00% | N/A |
| 2020-2021 | 663,334 | 24,988 | 3.77% | TBD | N/A | |

N/A – Not Available. TBD – To Be Determined.

*<https://sites.ed.gov/idea/files/PartC-IndicatorAnalysis-FFY2018.pdf>

78



79

December 14, 2021 80

Proposed targets for Indicator 6

| Program Year | Historical Data | Forecast | Baseline | Previous Targets | Proposed Targets |
|--------------|-----------------|----------|----------|------------------|------------------|
| 2013-2014 | 3.95% | | 3.95% | 4.00% | |
| 2014-2015 | 4.03% | | 3.95% | 4.00% | |
| 2015-2016 | 4.22% | | 3.95% | 4.00% | |
| 2016-2017 | 4.35% | | 3.95% | 4.00% | |
| 2017-2018 | 4.42% | | 3.95% | 4.00% | |
| 2018-2019 | 4.56% | | 3.95% | 4.00% | |
| 2019-2020 | 4.63% | | 3.95% | 4.00% | |
| 2020-2021 | | 4.77% | 3.95% | | 4.25% |
| 2021-2022 | | 4.89% | 3.95% | | 4.25% |
| 2022-2023 | | 5.01% | 3.95% | | 4.25% |
| 2023-2024 | | 5.12% | 3.95% | | 4.25% |
| 2024-2025 | | 5.24% | 3.95% | | 4.25% |
| 2025-2026 | | 5.36% | 3.95% | | 4.25% |

OSEP Definition:
Percent of infants and toddlers birth to 3 with IFSPs compared to Census data provided by OSEP

Department of Health

80

December 14, 2021

81

Indicator 7: Timely Initial IFSP

OSEP definition:
Percent of eligible infants and toddlers with IFSPs for whom an initial evaluation and initial assessment and an initial IFSP meeting were conducted within Part C's 45-day timeline

| Program Year | Eligible Children Sampled (Denominator) | Children with Timely IFSP | Children with Discountable Delayed IFSP** | Children with Timely and Discountable Delayed IFSP (Numerator) | Percent | Target | National Mean*** |
|--------------|---|---------------------------|---|--|---------|--------|------------------|
| 2013-2014 | 6,916 | 4,254 | 2,149 | 6,403 | 92.6% | 100% | 97% |
| 2014-2015 | 7,272 | 4,263 | 2,577 | 6,840 | 94.1% | 100% | 96% |
| 2015-2016 | 7,784 | 4,958 | 2,521 | 7,479 | 96.1% | 100% | 96% |
| 2016-2017 | 7,693 | 4,566 | 2,799 | 7,365 | 95.7% | 100% | 97% |
| 2017-2018 | 7,490 | 4,606 | 2,614 | 7,220 | 96.4% | 100% | 96% |
| 2018-2019 | 7,643 | 4,752 | 2,594 | 7,346 | 96.1% | 100% | 96% |
| 2019-2020 | 6,336 | 3,664 | 2,371 | 6,035 | 95.2% | 100% | N/A |
| 2020-2021* | 7,380 | 3,860 | 3,272 | 7,132 | 96.6% | 100% | N/A |

*Preliminary

**In PY2020-2021, there were 1,336 children with their initial IFSP delayed by COVID-19.

N/A – Not Available

***<https://sites.ed.gov/idea/files/PartC-IndicatorAnalysis-FFY2018.pdf>



81

December 14, 2021

82

Indicator 8: Timely Transition Steps & Services

- Children turned three years old between 7/1/2020 and 6/30/2021
- Randomly sample 6% for ROS counties and 3.5% for NYC boroughs, with minimum 25 or the whole county if the county size is less than 25.
- Before 90 days prior to the toddler's third birthday at the discretion of all parties:
 - 8A. Transition steps and services are documented in the IFSP
 - 8B. Notification of local school district
 - 8C. Transition conference



82

December 14, 2021

83

Indicator 8A: Transition Steps in IFSP

| Program Year | Total Children Sampled (Denominator) | Children with Timely Transition Discussion | Children with Discountable Delayed Discussion** | Children with Timely and Discountable Delayed Discussion (Numerator) | Percent | Target | National Mean*** | OSEP Definition: The percentage of toddlers with disabilities exiting Part C with timely transition planning for whom the Lead Agency has developed an IFSP with transition steps and services at least 90 days, and at the discretion of all parties, not more than nine months, prior to the toddler's third birthday |
|--------------|--------------------------------------|--|---|--|---------|--------|------------------|---|
| 2013-2014 | 1,194 | 1,172 | 12 | 1,184 | 99.2% | 100% | 96% | |
| 2014-2015 | 1,192 | 1,170 | 18 | 1,188 | 99.7% | 100% | 97% | |
| 2015-2016 | 1,203 | 1,196 | 4 | 1,200 | 99.8% | 100% | 97% | |
| 2016-2017 | 1,211 | 1,198 | 6 | 1,204 | 99.4% | 100% | 97% | |
| 2017-2018 | 1,625 | 1,612 | 9 | 1,621 | 99.8% | 100% | 97% | |
| 2018-2019 | 2,000 | 1,985 | 14 | 1,999 | 100% | 100% | 97% | |
| 2019-2020 | 2,017 | 1,993 | 22 | 2,015 | 99.9% | 100% | N/A | |
| 2020-2021* | 1,866 | 1,838 | 23 | 1,861 | 99.7% | 100% | N/A | |

*Preliminary

**In PY2020-2021, there were 4 children with their transition discussion delayed by COVID-19.

N/A – Not Available

***<https://sites.ed.gov/idea/files/PartC-IndicatorAnalysis-FFY2018.pdf>

83

December 14, 2021

84

Indicator 8B: Notify Local Education Agency

| Program Year | Sampled Children Potentially Eligible for Part B | Children Opted Out Notification | Children Needed Notification (Denominator) | Children with Timely Notification (Numerator) | Percent | Target | National Mean** | OSEP Definition: The percentage of toddlers with disabilities exiting Part C with timely transition planning for whom the Lead Agency has notified (consistent with any opt-out policy adopted by the State) the LEA where the toddler resides at least 90 days prior to the toddler's third birthday for toddlers potentially eligible for Part B preschool services |
|--------------|--|---------------------------------|--|---|---------|--------|-----------------|---|
| 2013-2014 | 1,194 | 188 | 1,006 | 972 | 96.6% | 100% | 95% | |
| 2014-2015 | 996 | 149 | 847 | 839 | 99.1% | 100% | 94% | |
| 2015-2016 | 1,037 | 159 | 878 | 873 | 99.4% | 100% | 97% | |
| 2016-2017 | 1,045 | 134 | 911 | 904 | 99.2% | 100% | 97% | |
| 2017-2018 | 1,432 | 280 | 1,152 | 1,141 | 99.1% | 100% | 98% | |
| 2018-2019 | 1,761 | 329 | 1,432 | 1,426 | 99.6% | 100% | 98% | |
| 2019-2020 | 1,816 | 342 | 1,474 | 1,450 | 98.4% | 100% | N/A | |
| 2020-2021* | 1,628 | 314 | 1,315 | 1,266 | 96.3% | 100% | N/A | |

*Preliminary

N/A – Not Available

**<https://sites.ed.gov/idea/files/PartC-IndicatorAnalysis-FFY2018.pdf>

84

December 14, 2021

85

Indicator 8C: Transition Conference

| Program Year | Sampled Children Potentially Part B Eligible | Children with Conference Declined by Parents | Children Who Needed Transition Conference (Denominator) | Children with Timely Conference | Children with Discountable Delayed Conference** | Children with Timely and Discountable Delayed Conference (Numerator) | Percent | Target | National Mean*** |
|--------------|--|--|---|---------------------------------|---|--|---------|--------|------------------|
| 2013-2014 | 1,006 | 666 | 340 | 267 | 34 | 301 | 88.5% | 100% | 95% |
| 2014-2015 | 996 | 685 | 311 | 280 | 20 | 300 | 96.5% | 100% | 96% |
| 2015-2016 | 1,037 | 719 | 318 | 270 | 41 | 311 | 97.8% | 100% | 95% |
| 2016-2017 | 1,045 | 732 | 313 | 276 | 27 | 303 | 96.8% | 100% | 96% |
| 2017-2018 | 1,432 | 1,064 | 368 | 310 | 44 | 354 | 96.2% | 100% | 96% |
| 2018-2019 | 1,761 | 1,349 | 412 | 344 | 60 | 404 | 98.1% | 100% | 96% |
| 2019-2020 | 1,816 | 1,385 | 431 | 372 | 48 | 420 | 97.4% | 100% | N/A |
| 2020-2021* | 1,628 | 1,201 | 427 | 310 | 108 | 418 | 97.9% | 100% | N/A |

OSEP Definition: The percentage of toddlers with disabilities exiting Part C with timely transition planning for whom the Lead Agency has conducted the transition conference held with the approval of the family at least 90 days, and at the discretion of all parties, not more than nine months, prior to the toddler's third birthday for toddlers potentially eligible for Part B preschool services.

*Preliminary. N/A – Not Available.

**In PY2020-2021, there were 58 children with the transition conference delayed by COVID-19.

***<https://sites.ed.gov/idea/files/PartC-IndicatorAnalysis-FFY2018.pdf>



85

December 14, 2021

86

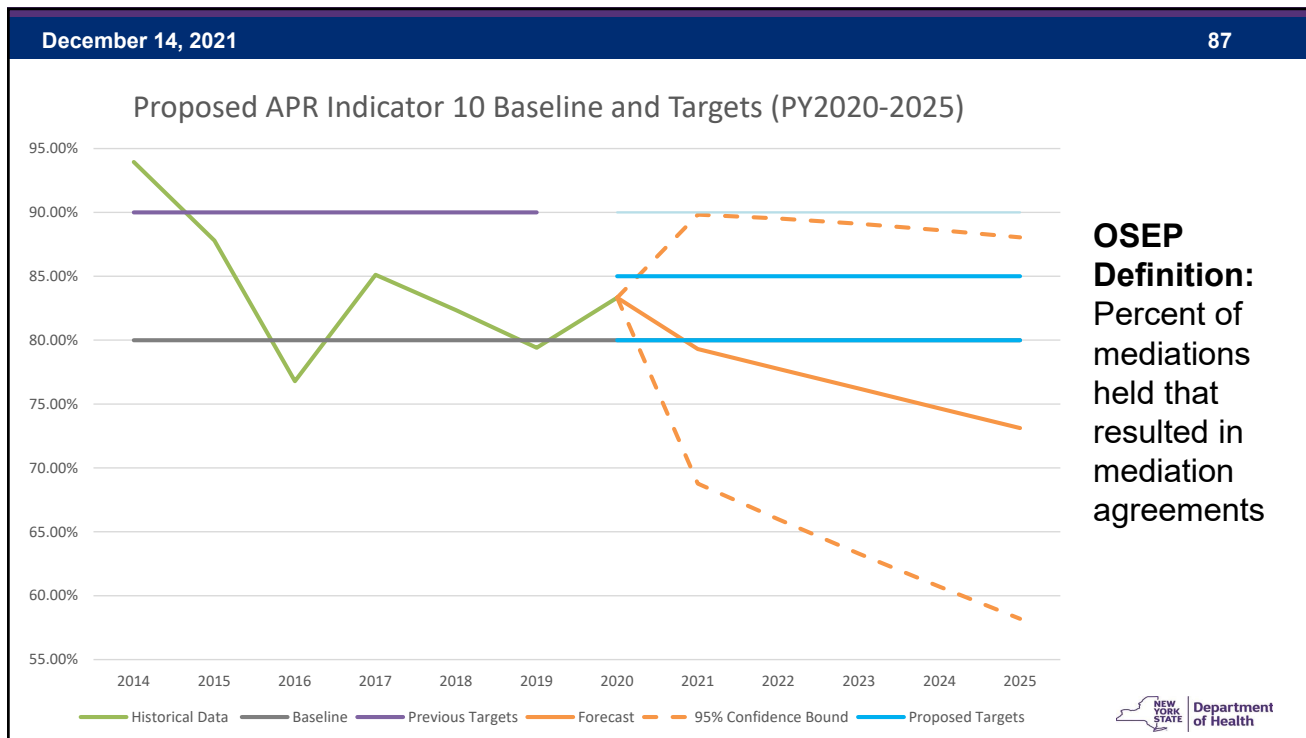
Indicator 10: Mediations

- **OSEP Definition:** Percent of mediations held that resulted in mediation agreements
- Data from Provider Approval and Due Process unit
- Mediations held between July 1, 2020 and June 30, 2021

| Program Year | Mediations Held | Mediation Agreements | Percent | Target |
|--------------|-----------------|----------------------|---------|--------|
| 2013-2014 | 68 | 65 | 95.6% | 90% |
| 2014-2015 | 66 | 62 | 93.9% | 90% |
| 2015-2016 | 41 | 36 | 87.8% | 90% |
| 2016-2017 | 56 | 43 | 76.8% | 90% |
| 2017-2018 | 47 | 40 | 85.1% | 90% |
| 2018-2019 | 51 | 42 | 82.4% | 90% |
| 2019-2020 | 34 | 27 | 79.4% | 90% |
| 2020-2021 | 36 | 30 | 83.3% | TBD |



86



87

December 14, 2021 88

Proposed targets for Indicator 10

| Program Year | Historical Data | Forecast | Baseline | Previous Targets | Proposed Targets |
|--------------|-----------------|----------|----------|------------------|------------------|
| 2014-2015 | 93.94% | | 80.00% | 90.00% | |
| 2015-2016 | 87.80% | | 80.00% | 90.00% | |
| 2016-2017 | 76.79% | | 80.00% | 90.00% | |
| 2017-2018 | 85.11% | | 80.00% | 90.00% | |
| 2018-2019 | 82.35% | | 80.00% | 90.00% | |
| 2019-2020 | 79.41% | | 80.00% | 90.00% | |
| 2020-2021 | 83.33% | | 80.00% | | 80.00-85.00% |
| 2021-2022 | | 79.30% | 80.00% | | 80.00-85.00% |
| 2022-2023 | | 77.75% | 80.00% | | 80.00-85.00% |
| 2023-2024 | | 76.21% | 80.00% | | 80.00-85.00% |
| 2024-2025 | | 74.66% | 80.00% | | 80.00-85.00% |
| 2025-2026 | | 73.12% | 80.00% | | 80.00-85.00% |

OSEP Definition:
Percent of mediations held that resulted in mediation agreements

Department of Health

88

Indicator 11 – State Systemic Improvement Plan (SSIP)



Indicator 11 – State Systemic Improvement Plan (SSIP)

- Improving family outcomes by ensuring the Program is family-centered
- Three phases: 2014 to 2020
- Continuation of Phase Three: 2020 – 2025
- SiMR – to increase the percentage of positive responses from families on the Impact of Early Intervention Services on Your Family Scale (IFS)



Indicator 11: State Systemic Improvement Plan (SSIP) Reported Data and Targets

| | 2015-2016 | 2016-2017 | 2017-2018 | 2018-2019 | 2019-2020* | 2020-2021** |
|-----------------------------------|------------|-------------|-------------|-------------|---------------|---------------|
| | 61.63% | 70.12% | 66.99% | 63.67% | 93.91%* | 93.22%* |
| Numerator/ Denominator | (673/1092) | (1021/1456) | (1238/1848) | (1034/1624) | (59596/63460) | (34567/37080) |
| Target | 65.09% | 65.09% | 65.50% | 66.50% | 87% | TBD |

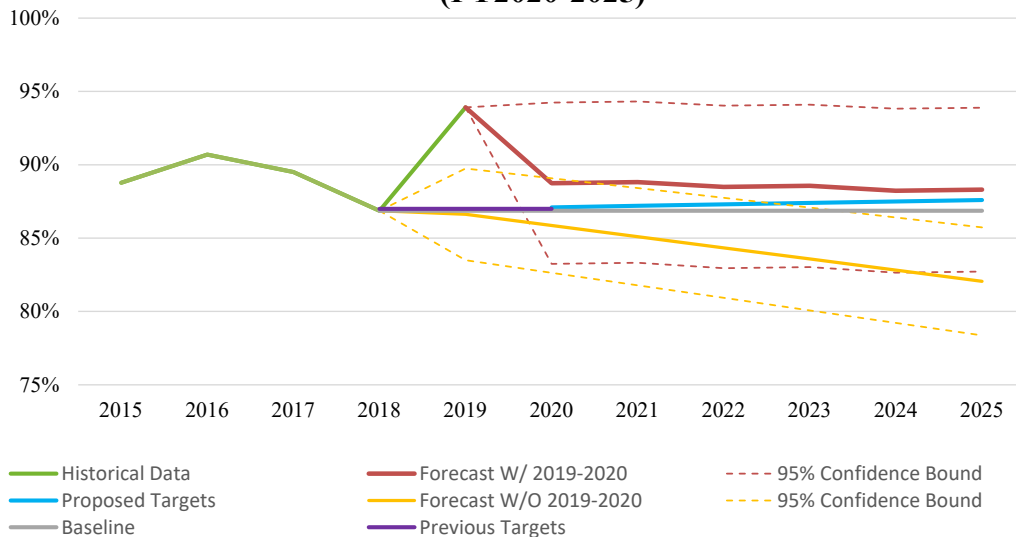
*Starting PY2019-2020, reporting methodology changed from Rasch model to the positive response from families.

**Preliminary data.

TBD – To Be Determined.



Proposed APR Indicator 11 (SSIP) Baseline and Targets (PY2020-2025)



Proposed targets for Indicator 11

| Program Year | Historical Data | Forecast W/ 2019-2020 | Forecast W/O 2019-2020 | Baseline | Previous Targets | Proposed Targets |
|--------------|-----------------|-----------------------|------------------------|----------|------------------|------------------|
| 2015-2016 | 88.77% | | | | | |
| 2016-2017 | 90.69% | | | | | |
| 2017-2018 | 89.50% | | | | | |
| 2018-2019 | 86.87% | | | 86.87% | 87.00% | |
| 2019-2020 | 93.91% | | 86.62% | 86.87% | 87.00% | |
| 2020-2021 | | 88.74% | 85.86% | 86.87% | | 87.10% |
| 2021-2022 | | 88.82% | 85.10% | 86.87% | | 87.20% |
| 2022-2023 | | 88.49% | 84.34% | 86.87% | | 87.30% |
| 2023-2024 | | 88.56% | 83.58% | 86.87% | | 87.40% |
| 2024-2025 | | 88.23% | 82.82% | 86.87% | | 87.50% |
| 2025-2026 | | 88.31% | 82.06% | 86.87% | | 87.60% |



Family Engagement



Family Engagement

- Provide family perspective & voice for parents
- Help make positive changes
- Improve services for children and their families



Questions?

