



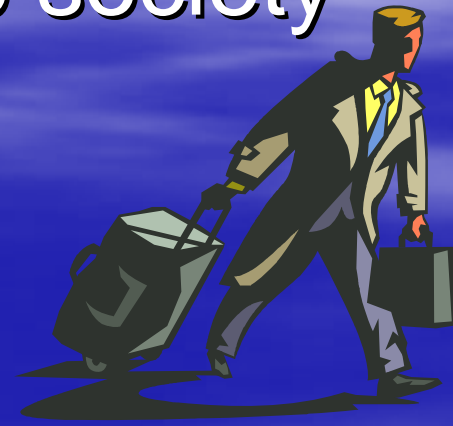
NYS DIVISION OF PAROLE

REENTRY SERVICES

REENTRY DEFINED



- Reentry is the process by which incarcerated persons return to the community with all necessary resources enabling them to reintegrate into society as law abiding citizens.





THE VISION

- A SMOOTH TRANSITION FROM PRISON TO COMMUNITY
- INTEGRATED AND COORDINATED POLICIES, AND MUTUAL OWNERSHIP OF AN IMPROVED TRANSITION PROCESS FOR CORRECTION, LAW ENFORCEMENT, AND HUMAN SERVICE AGENCIES
- PAROLEES WHO REMAIN ARREST-FREE OVER THE LONG HAUL AND BECOME COMPETENT AND SELF-SUFFICIENT MEMBERS OF THEIR COMMUNITIES

TRANSITION FROM PRISON TO COMMUNITY INITIATIVE (TPCI)

- THE TRANSITION PROCESS INCLUDES:
 - How convicted offenders spend their time during confinement
 - How they are released from prison
 - How they are supervised during their adjustment to life in the community
- THE TRANSITION PROCESS IS DESIGNED TO:
 - Improve offender transition practices
 - Increase public safety
 - Reduce recidivism and new victimization
 - Make better use of scarce state and local resources

WHERE DOES REENTRY BEGIN?

- AT THE CORRECTIONAL FACILITY
 - DOCUMENTATION
 - FACILITY PROGRAMMING
 - PAROLE BOARD
 - FACILITY PAROLE STAFF



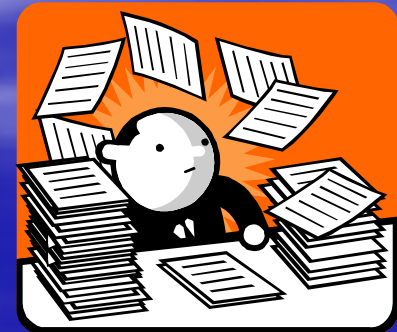
DOCUMENTATION

- DOCS INITIATED
 - BIRTH CERTIFICATES
 - SOCIAL SECURITY CARDS
 - PICTURE IDENTIFICATION—30 DAYS



DISCHARGE PLANNING DOCUMENTATION

- SSI APPLICATIONS
 - INITIATED BY EITHER OMH OR DOP
- MEDICAL REPORTS
 - INITIATED BY DOCS AFTER REQUEST FROM DOP FACILITY STAFF
- MENTAL STATUS EVALUATIONS
 - INITIATED BY OMH AFTER REQUEST FROM DOP FACILITY STAFF



DISCHARGE PLANNING DOCUMENTATION (CONT.)

- IMMIGRATION STATUS
- VETERAN'S STATUS
– DD214
- RELEASE OF INFORMATION FORMS
- INITIATED BY DOP STAFF AT ULSTER CF AFTER REQUEST BY DOP FACILITY STAFF
- INITIATED BY FACILITY PAROLE STAFF OR DOCS BY REQUEST TO THE VETERAN'S ADMINISTRATION
- INITIATED BY DOP FACILITY STAFF AFTER REQUEST FROM REENTRY / FIELD STAFF ONCE PROVIDERS ARE IDENTIFIED

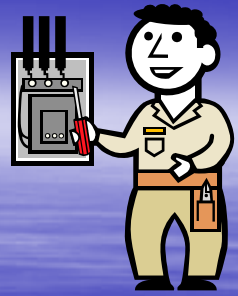


FACILITY PROGRAMMING EDUCATION PROGRAMS

- ACADEMIC OUTREACH (CELL STUDY)
- ADULT BASIC EDUCATION (ABE)
- BILINGUAL
- CERTIFICATE in MINISTRY and HUMAN SERVICES
- COLLEGE PROGRAMS
- GENERAL EDUCATION PROGRAMS (GED)
- MASTERS IN PROFESSIONAL STUDIES
- SPECIAL EDUCATION PROGRAM



FACILITY PROGRAMMING VOCATIONAL PROGRAMS



- Air Conditioning & Refrigeration
- Appliance Repair
- Auto Mechanics
- Barbering
- Braille Transcription
- Cabinetmaking
- Carpentry
- Closed Circuit Television Production
- Commercial Arts
- Computer Operator, Programmer, Repair
- Cosmetology
- Custodial Maintenance
- Drafting



- Electrical Trades
- Floor Covering
- Food Service
- General Business
- Horse Handling
- Horticulture
- Introduction to Technology
- Machine Shop
- Masonry
- Painting
- Radio & Television Repair
- Small Engine Repair
- Upholstery
- Welding



FACILITY PROGRAMMING TREATMENT PROGRAMS

- ADDICTION
 - Alcohol and Substance Abuse; Gambling; Money
- PERSONAL
 - Stress Reduction; Assertive Training; Behavior/Attitude Change; Death and Dying
- SEX OFFENDER
 - Sex Offender; Sex Abuse Victim
- RELATIONSHIP
 - Family; Parenting; Interpersonal Communication; Love; Peers
- AGGRESSION REPLACEMENT
 - Anger; Domestic Violence; Conflict Resolution
- Mental Health
- Medical

FACILITY PROGRAMMING TRANSITIONAL SERVICES PROGRAM

- AGGRESSION REPLACEMENT TRAINING
- COMMUNITY LIFESTYLES
- INMATE PROGRAM ASSOCIATE PROGRAM
- JOB DEVELOPMENT
- NETWORK PROGRAM

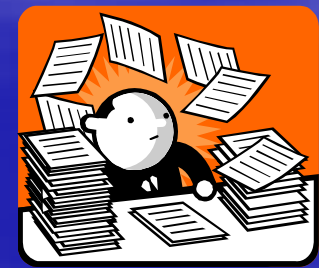
PAROLE BOARD

- DETERMINES READINESS FOR RELEASE FOR INDETERMINATE SENTENCED INDIVIDUALS
- MANDATES SPECIAL CONDITIONS SPECIFIC TO CASE NEEDS FOR BOTH DETERMINATE AND INDETERMINATE SENTENCED INDIVIDUALS



FACILITY PAROLE STAFF

- IDENTIFIES CASE SPECIFIC NEEDS
- RECOMMENDS SPECIAL CONDITIONS TO PAROLE BOARD
- FACILITATES RECEIPT OF NECESSARY DOCUMENTATION
- PREPARES RELEASE PROGRAM INVESTIGATION REQUEST TO FIELD PAROLE
- WORKS WITH FIELD STAFF TO DEVELOP A NEEDS BASED DISCHARGE PLAN



REENTRY / FIELD PAROLE STAFF

- REVIEWS CASE NEEDS
- ESTABLISHES VIABLE PAROLE PROGRAM
 - HOUSING
 - EMPLOYMENT
 - TREATMENT



“PUTTING IT ALL TOGETHER”

- CHECK FOR IDENTITY DOCUMENTATION
 - BIRTH CERTIFICATE
 - SOCIAL SECURITY CARD
- DETERMINE NEEDS
- CHECK FOR APPROPRIATE DOCUMENTATION ASSOCIATED WITH EACH NEED
 - DISABILITY SSI Letter of Eligibility Determination
 - MEDICAL Comprehensive Medical Summary
 - Patient Review Instrument (PRI) AND SCREEN
 - Medication Grant Program Card
 - ADAP Card
 - MENTAL HEALTH Mental Status Evaluation
 - VETERAN’S STATUS DD214
- REQUEST ABSENT DOCUMENTS FROM FACILITY STAFF

“PUTTING IT ALL TOGETHER”

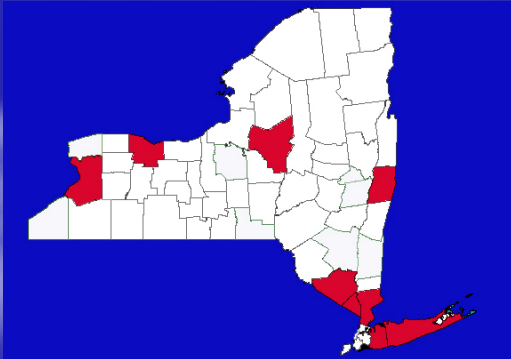
- DETERMINE WHICH RESOURCES ARE NECESSARY TO ESTABLISH PROGRAM
 - CONTACT FACILITY FOR PROGRAM SPECIFIC RELEASE OF INFORMATION FORMS
 - CONTACT REENTRY SERVICES TO IDENTIFY AN APPROPRIATE RESOURCE
- CONTACT APPROPRIATE AGENCIES FOR POSSIBLE PLACEMENT
- ALERT FACILITY STAFF RE PLACEMENTS
 - REQUEST ADDITIONAL INFORMATION AS NEEDED
 - DISCUSS TRANSPORTATION ARRANGEMENTS IF NECESSARY
- IF SPECIAL NEEDS EXIST FOR HARD TO PLACE
 - HARD TO PLACE DEFINED--PHYSICAL OR MENTAL DISABILITIES THAT REQUIRE ASSISTANCE WITH NEGOTIATING COMPLEX SERVICE DELIVERY SYSTEMS
 - DISCUSS CASE WITH REENTRY STAFF

IF SPECIAL NEEDS EXIST.....

- REFER CASE TO REENTRY SERVICES
- REENTRY SERVICES WILL REFER APPROPRIATE CASES TO REENTRY TASK FORCES THROUGH FIELD STAFF ASSIGNED TO THE REENTRY PROJECT
- REENTRY SERVICES WILL CONTINUE TO PROVIDE TECHNICAL ASSISTANCE IN COLLABORATION WITH THE PAROLE OFFICER IF CASE IS REJECTED BY THE REENTRY TASK FORCE OR IF NO REENTRY TASK FORCE EXISTS IN THE RECEIVING COUNTY

REENTRY TASK FORCE COUNTIES

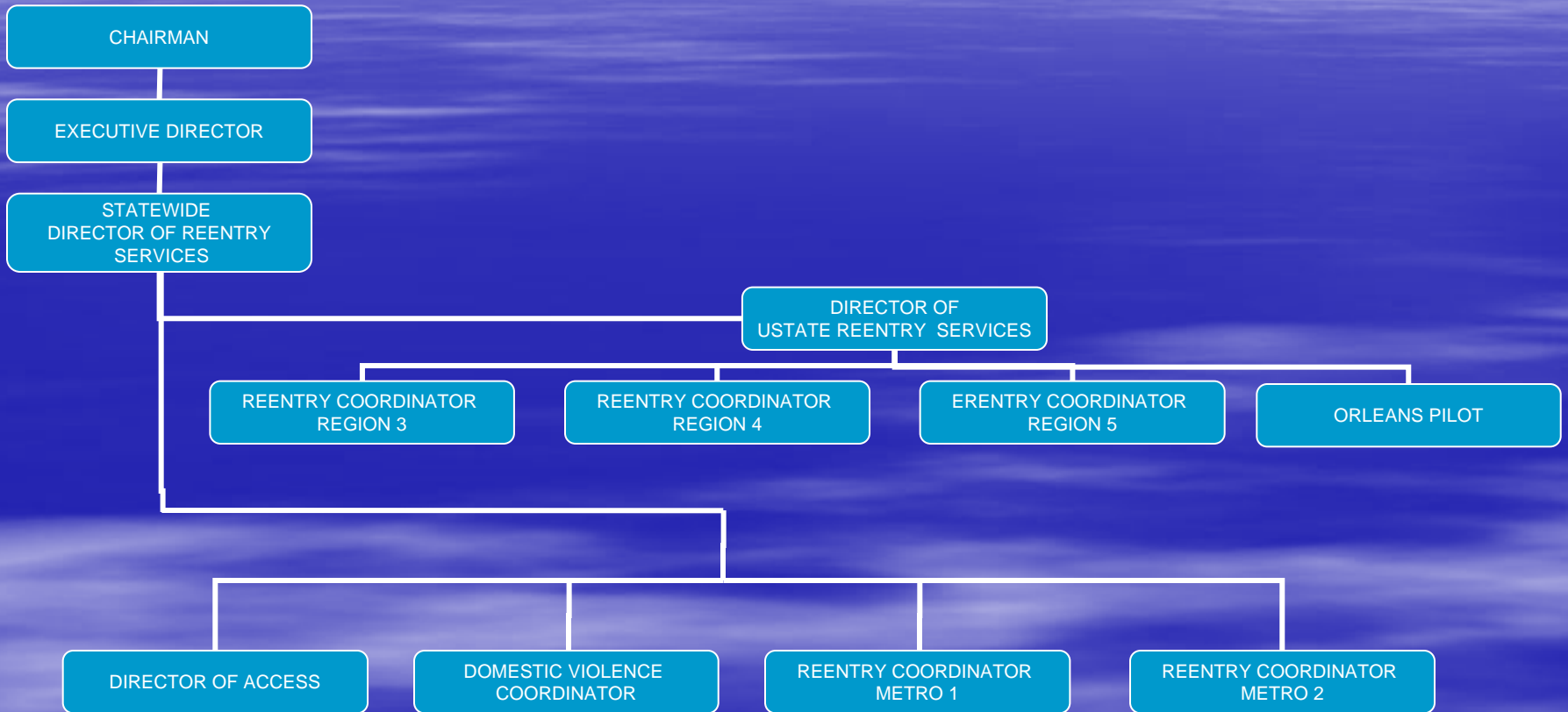
- SUFFOLK
- NASSAU
- WESTCHESTER
- ROCKLAND
- ORANGE
- ONEIDA
- MONROE
- ERIE
- RENSSELAER
- NIAGARA
- DUTCHESS
- ONONDAGA



REENTRY TASK FORCE

- MULTI-DISCIPLINARY, COUNTY BASED, CRIMINAL JUSTICE TASK FORCE ESTABLISHED TO ASSIST IN THE REENTRY PROCESS
- INITIATED AND FUNDED THROUGH THE DEPARTMENT OF CRIMINAL JUSTICE SERVICES (DCJS)
- FEDERAL TPCI GRANT MONIES AWARDED TO SPECIFIC COUNTIES
- COLLABORATIVE EFFORT WITH THE DIVISION OF PAROLE (DOP) AND THE DEPARTMENT OF CORRECTIONAL SERVICES (DOCS) AS WELL AS TARGETED COUNTY AGENCIES
- ASSESSES COUNTY RESOURCES TO IDENTIFY GAPS
- ACCEPTS HIGH RISK CASES WITH SPECIAL NEEDS TO ASSIST IN APPROPRIATE PLACEMENT BY ACCESSING COUNTY RESOURCES

REENTRY SERVICES ORGANIZATIONAL CHART



OFFICE OF REENTRY SERVICES

- TECHNICAL ASSISTANCE
- COMMUNITY LIAISON SERVICES
- REQUEST FOR PROPOSAL DEVELOPMENT
- CONTRACT MANAGEMENT
- INTERAGENCY INITIATIVES

TECHNICAL ASSISTANCE

- DIRECT REFERRAL OF HARD TO PLACE CASES

- CASES WITH SPECIAL NEEDS MAY BE REFERRED

- MENTAL HEALTH TREATMENT
- MEDICAL TREATMENT
- SUBSTANCE ABUSE TREATMENT
- SEX OFFENDER TREATMENT
- HEARING IMPAIRED
- INTERPRETER SERVICES
- HOUSING
- OMRDD SERVICES
- EMPLOYMENT
- SERVICES FOR THE BLIND
- DV OFFENDER PROGRAMMING

TECHNICAL ASSISTANCE (CONT.)

- ACCESS TO EMERGENCY HOUSING FUNDING
 - LIMITED FUNDING IS AVAILABLE TO TEMPORARILY HOUSE PAROLEES WHO CANNOT BE HOUSED IN EXISTING PROGRAMS OR WITH FAMILY AND FRIENDS
 - USUALLY PLACED IN LOCAL HOTELS
 - HOTELS MUST UTILIZE STATE VOUCHER SYSTEM FOR PAYMENT
- ACCESS TO LIMITED FUNDING FOR OTHER SERVICES
 - SEX OFFENDER TREATMENT
 - INTERPRETER SERVICES
 - EMERGENCY TRANSPORTATION SERVICES

TECHNICAL ASSISTANCE (CONT.)

- PROGRAM RESOURCE MANUAL MAINTENANCE
 - LOCATED IN EACH AREA OFFICE
 - PROVIDES INFORMATION ON PROGRAMS WITHIN THE REGION
- PROVIDER PRESENTATIONS ARRANGED
 - USUALLY AT BUREAU MEETINGS
 - BOTH CONTRACT AND NON CONTRACT PROGRAMS PROVIDE AN OVERVIEW OF THEIR SERVICES

TECHNICAL ASSISTANCE (CONT.)

- DEVELOPMENT OF NECESSARY SERVICES
 - IDENTIFYING NEEDED PROGRAMMING NOT CURRENTLY AVAILABLE
 - ADVOCATING FOR NEW SERVICES WITH BOTH COUNTY AGENCIES AND PROGRAM PROVIDERS, eg.
 - JOB FAIRS FOR EMPLOYMENT
 - NEW ANGER MANAGEMENT PROGRAMS
 - SEEKING ADDITIONAL FUNDING SOURCES TO SUPPORT NEW PROGRAMMING

COMMUNITY LIAISON ACTIVITIES

- REENTRY TASK FORCES
- SEX OFFENDER MANAGEMENT TASK FORCES
- ROAD TO RECOVERY / DTAP TASK FORCES
- HOUSING CONSORTIUMS AND WORKGROUPS
- CRIMINAL JUSTICE ADVISORY BOARDS
- COUNTY AGENCY COMMITTEES
- MENTAL HEALTH WORKGROUPS
- DOMESTIC VIOLENCE TASK FORCES, ROUNDTABLES, AND COMMITTEES
- BATTERERS PROGRAM STUDY GROUPS
- CHILD SUPPORT ENFORCEMENT COMMITTEE
- NATIONAL INSTITUTE OF JUSTICE AND CENTER FOR COURT INNOVATION PROJECT
- DHS INITIATIVES
- EMPLOYMENT / CAREER WORKGROUPS

RELAPSE PREVENTION ACCESS SERVICES

- PHILOSOPHY
- ACCESS COUNSELORS
- DEDICATED TREATMENT SLOTS

RELAPSE PREVENTION PHILOSOPHY

- PAROLEES WITH A HISTORY OF SUBSTANCE ABUSE ARE ALWAYS AT RISK OF RELAPSE
- EDUCATION AND TREATMENT WORK
- SIGNS AND SYMPTOMS OF RELAPSE
- REFER TO OASAS TREATMENT PROVIDERS

INTERAGENCY COLLABORATIONS

- DEPARTMENT OF LABOR MOU
- VETERANS ADMINISTRATION
- VESID
- MENTAL HEALTH
- AIDS COUNCIL
- SEX OFFENDER MANAGEMENT
- REENTRY
- DEPARTMENT OF CORRECTIONAL SERVICES

Lynn Goodman - Director of Re-Entry Services

(212) 239-5760 –NYC

(518) 473-7455 -Albany

Metro 1

(314 W. 40th St.-Manhattan Office)

(212) 239-5738

**Robert Mitchell
Detrel Howell
Robert Baultwright**

**Regional Re-Entry Coordinator
Assistant Regional Re-Entry Coordinator
Re-Entry Parole Officer**

Metro 2

(92-36 Merrick Blvd. – Queens Office)

(718) 558-5150

**Daniel Faison
Karyl Hawes-Jones
Sharon Sealey
Audrey Thompson**

**Regional Re-Entry Coordinator
Assistant Regional Re-Entry Coordinator
Re-Entry Parole Officer
Re-Entry Parole Officer**

***Patricia Fitzmaurice – Director of Upstate Re-Entry Services
(518) 473-7455***

Region 3

*(3 Cottage Place – New Rochelle Office)
(914) 654-8709*

**Ana Enright
Grant Valentine**

**Regional Re-Entry Coordinator
Senior Parole Officer**

Deborah Code

(82 Executive Blvd. – Central Long Island Office)

Re-Entry Parole Officer

Region 4

*(10 Russell Road – Albany Office)
(518) 459-7479*

**Ed Fraley
Janet Reeves
Lynn Hamilton**

**Regional Re-Entry Coordinator
Assistant Regional Re-Entry Coordinator
Re-Entry Parole Officer**

Region 5

*(350 South Ave. – Rochester Office)
(585) 232-6927*

Michael Iacucci

Re-Entry Parole Officer

*(460 Main Street – Buffalo Office)
(716) 847-3481*

**Elizabeth Wilk
Pedro Hernandez**

**Assistant Regional Re-Entry Coordinator
Re-Entry Parole Officer**