

“Moving the Dial” to better community health in Buffalo, New York

Presenter

Rita Hubbard-Robinson, JD

Director, Community Health Education & Outreach
Erie County Medical Center

Social Determinants of Health

- Education
- Employment
- Income
- Family & Social Support

Social & Economic Factors 40%

Health Behaviors 30%

- Tobacco Use
- Diet & Exercise
- Alcohol Use
- Unsafe Sex

Clinical Care 10%

- Access to Care
- Quality of Care

Physical Environment 20%

- Environmental Quality
- Built Environment

Erie County Medical Center Health Equity Focus

- Health Behaviors 30%
- Social/Economic Factors 40%
- Physical Environment 20%

Farmers' Market at Grider



A Movement for Health

This is not just a market;
it's a movement,
a meeting place,
a healthy lifestyle learning place,
a place to learn about fitness,
and to convene for neighborhood
walks
and healthy living talks

Plant Day at the Market



Market Fitness and Fun

- Gospel-robics
- Tai-Chi
- Hula Hoop
- Line Dancing
- Plant Day
- Apple Days
- Harvest Day



Kids Work Out Challenge



Food Demonstrations



Cooking Healthy for the Holidays



Cooking Healthy for the Holidays With Kelly and Kelly



Recipe Book

Kale and Black Eyed Pea Holiday Soup
Winter Salad
Okra and Tomatoes
Twice-baked Sweet Potatoes with Chipotle



Saturday, November 26th, 2011
11 AM – 1 PM
Mount Olive Baptist Church



Sponsored by
Erie County Medical Center
Community Health Workers of Buffalo
Food For All

Pathways to Healthcare



ECMC Healthcare Professions Conference: *Just for 7th Graders*



ECMC Summer Youth Program

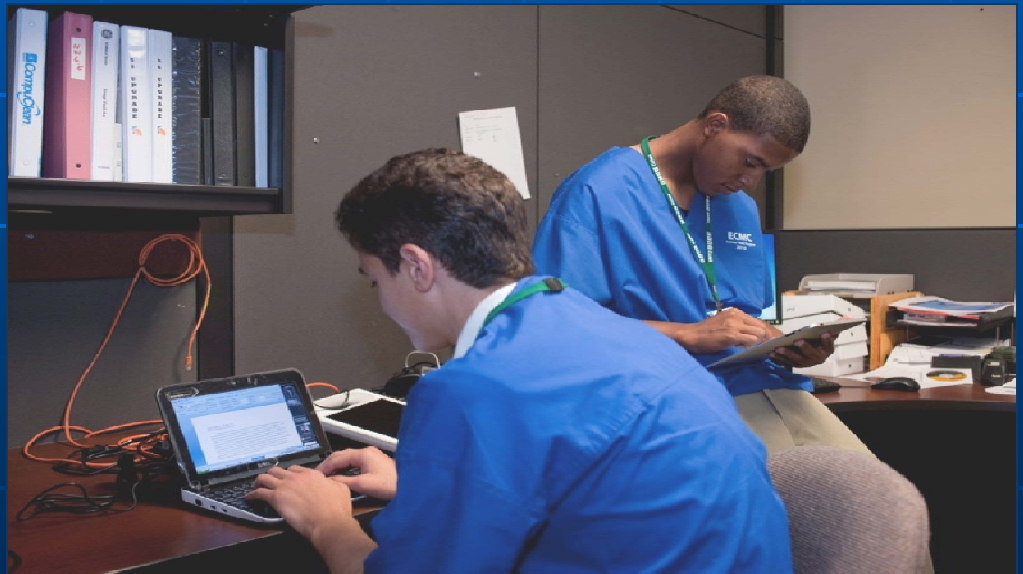


Creating the Experiential Base



“I’m taking many experiences with me from this, for example, how to conduct myself in a hospital and I’m taking the things I learned that I can use in the world.”

- 9th Grade Intern



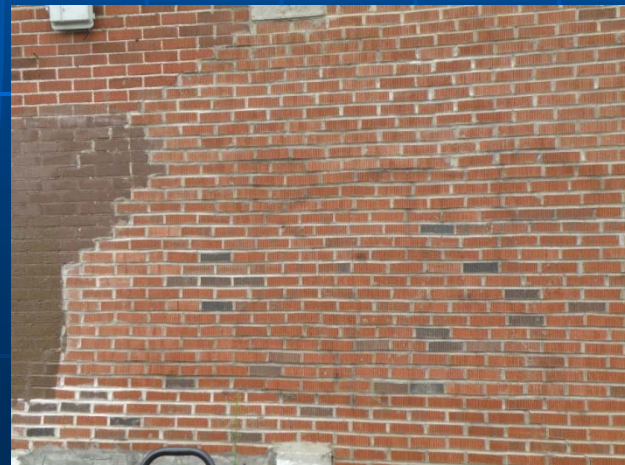
Erie County Medical Center



ECMC Community Development

- 2007 Demolition of vacant dilapidated housing (on-going)
- 2008 New Paved Road and Sidewalks (City of Buffalo)
- 2008 Farmers' Market at Grider Street (landscaped market space)
- 2011 Community Clean Up Day
- 2011 City of Buffalo - Clean Sweep
- 2012 Delavan Grider Collaboration: Proposal for Street Pole Banners and Garbage Cans

Clean Sweep 2011 – Partnership with City of Buffalo





Community Partnerships



Radio Show on Health



UB School of Public Health Survey

■ Quotes

- "They teach you how to use the things you can buy there. They give you the recipe and every week [my neighbor and I] go together. If she can't, I will go"
- "[I go] because I like fresh fruits and vegetables."
- "It would be better for me and my family"
- "There is no other supermarket"



“Let’s Get Moving” Community Health Symposium and Fair



Churches and Community, Working Together to Improve Health

- Faith Community
- ECMC
- Grupo Ministerial
- Healthcare Education Project
- Hispanics United of Buffalo
- Masten Block Club Coalition
- AFL-CIO - BWNY LCLAA & CBTU
- Public Policy and Education Fund
- Upstate New York Transplantation Services

Western New York Health Equity Coalition

coordinated by the P² collaborative
of wny, inc.

Partnership with the P² Collaborative of WNY

- Chairperson of the Western New York Health Equity Coalition for the P² Collaborative of WNY.
- The WNY Health Equity Coalition is an inclusive group of leaders that champions equal access to quality health and wellness for everyone in Western New York.

Building a Health Equity Center

An evaluation team visited 3 types of health equity centers to inform the design of a Western New York health equity center.

A hospital based approach

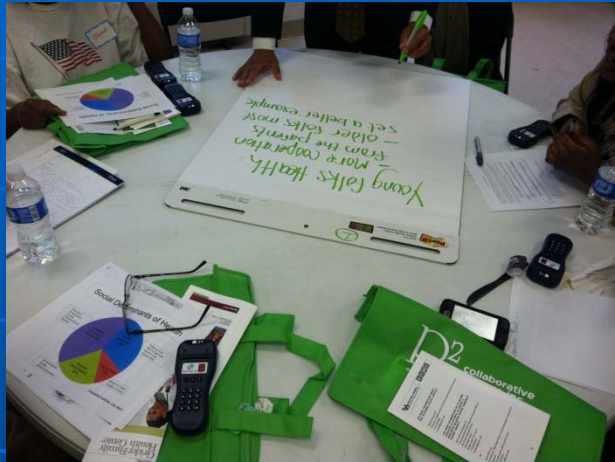
A research driven institution

A government based model

WNY HEC – 2012 Goals

- Utilize the Louisville model to convene community meetings in the Spring.
- Begin to develop a framework for the WNY Health Equity Center.
- Host a representative from Louisville with members of the WNYHEC and the WNY community.

Community Conversations



- Communities met to determine Social Determinant of Health Priorities in their communities. After reconvening and splitting up in work groups, resources will be identified to bolster the goals and plans for each community.

Going Upstream



Rita Hubbard-Robinson, JD

Director, Community Health Education & Outreach

Erie County Medical Center

rhrobins@ecmc.edu

716-898-3509